



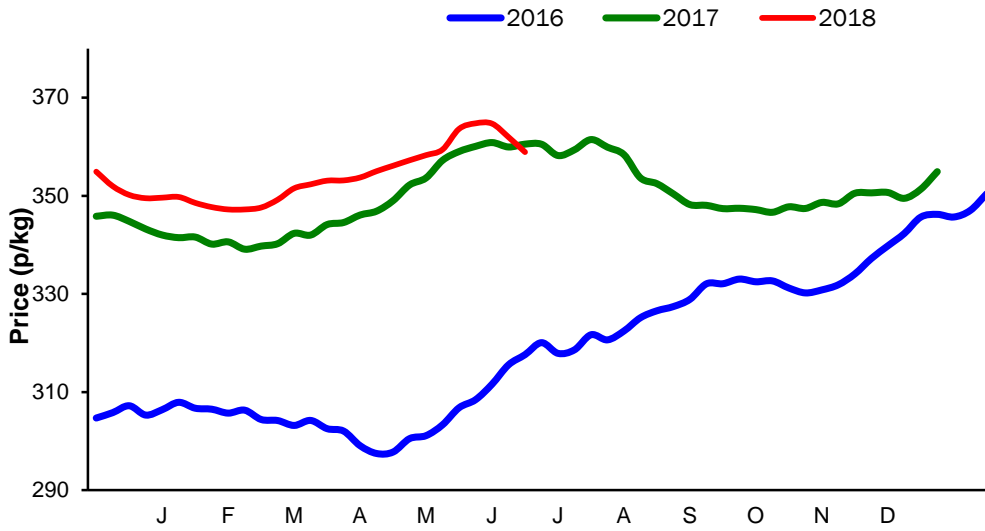
**Monthly Economic Review
June 2018**

Contents

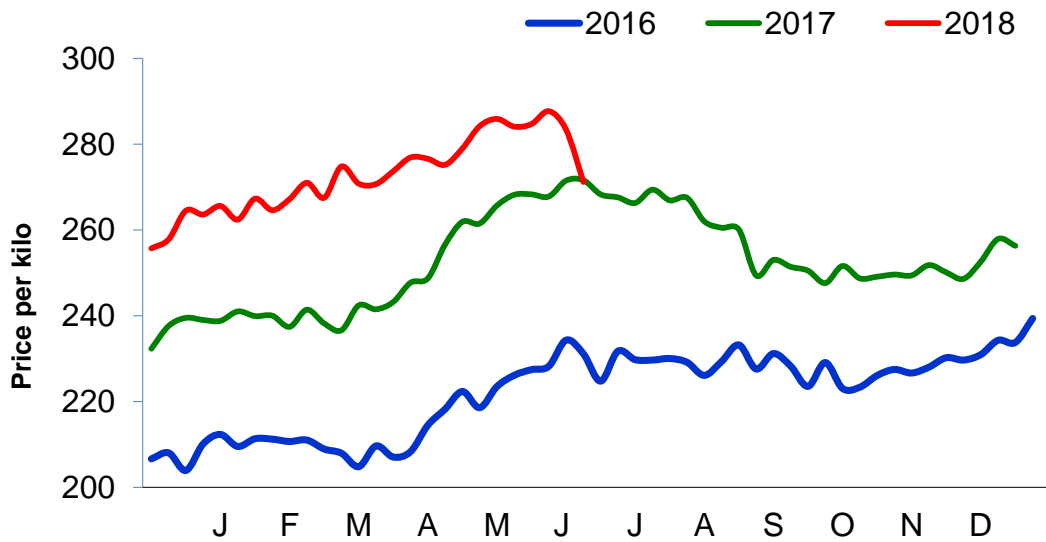
Contents.....	2
Cattle Prices	3
Average NI Clean Cattle Price	3
Average NI Cow Price.....	3
Cattle Slaughtering.....	4
NI Clean Cattle Slaughtering – Cumulative	4
NI Weekly Clean Cattle Slaughtering.....	4
NI Weekly Cow Slaughtering	5
Sheep Prices.....	6
Average NI Lamb / Hogget Price	6
Sheep Slaughtering.....	7
Cumulative Lamb & Hogget Slaughtering	7
Total Weekly Lamb & Hogget Slaughtering	7
Total Weekly Ewe and Ram Slaughtering.....	7
Total Carcase Weight Produced for the Food Chain.....	8
Change in Throughput / Production	9
Supply and Price.....	10
NI Lamb/Hogget Kill vs. Average Lamb / Hogget Price	10
NI Clean Cattle Kill vs. Average Clean Cattle Price.....	10
British Isles Price Comparisons	11
UK Average Cow Prices	11
Weekly UK Cow Prices	11
British Isles R3 Steer Price	12
British Isles R4 Steer Price	12
British Isles Average R3 and R4 Steer price	13
British Isles R3 Heifer Price	14
British Isles R4 Heifer Price	14
British Isles Average R3 and R4 Heifer price.....	15
Exchange Rate £ / Euro	16
Imports.....	17
Monthly Live Imports of Cattle into NI for Direct Slaughter	17
Monthly Live Imports of Sheep into NI for Direct Slaughter	17
Exports	18
Monthly Live Exports of Cattle from NI into RoI and GB.....	18
Monthly live Exports of Sheep from NI into RoI and GB	18

Cattle Prices

Average NI Clean Cattle Price

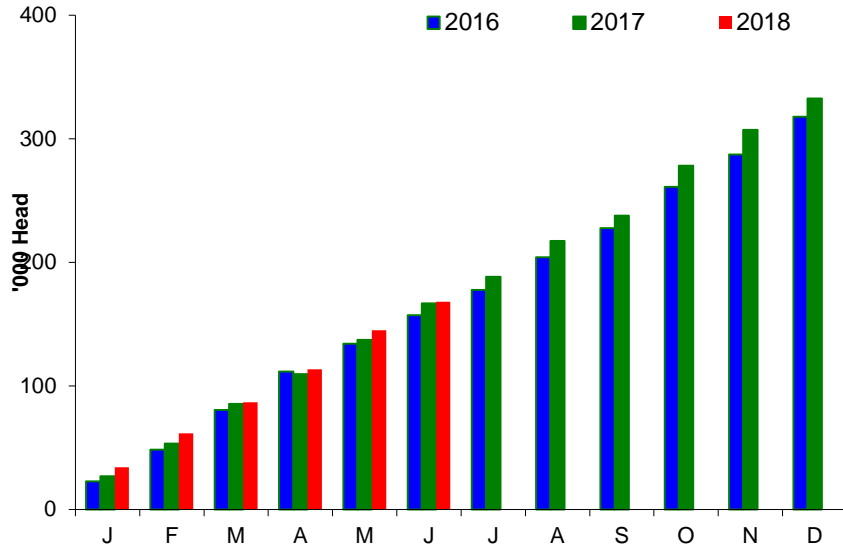


Average NI Cow Price

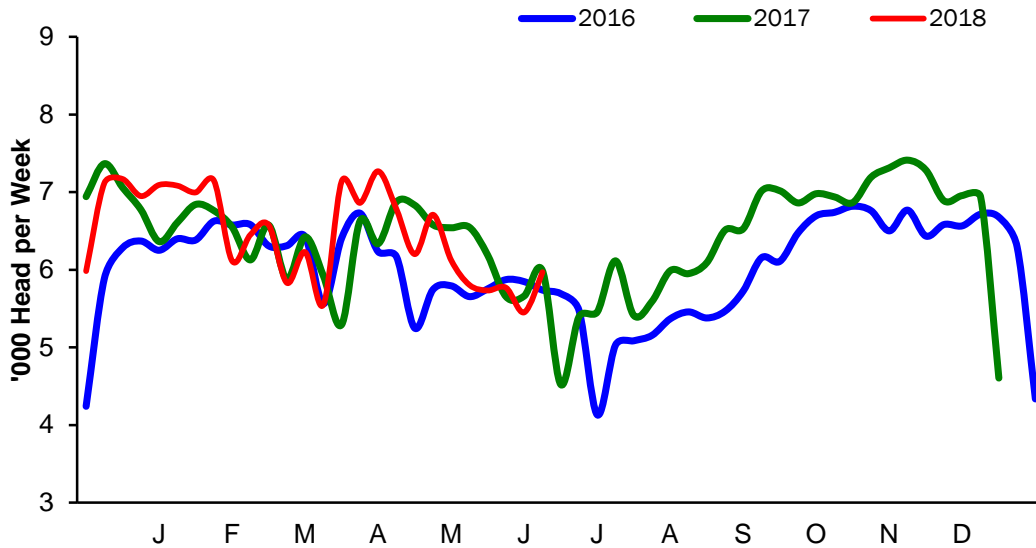


Cattle Slaughtering

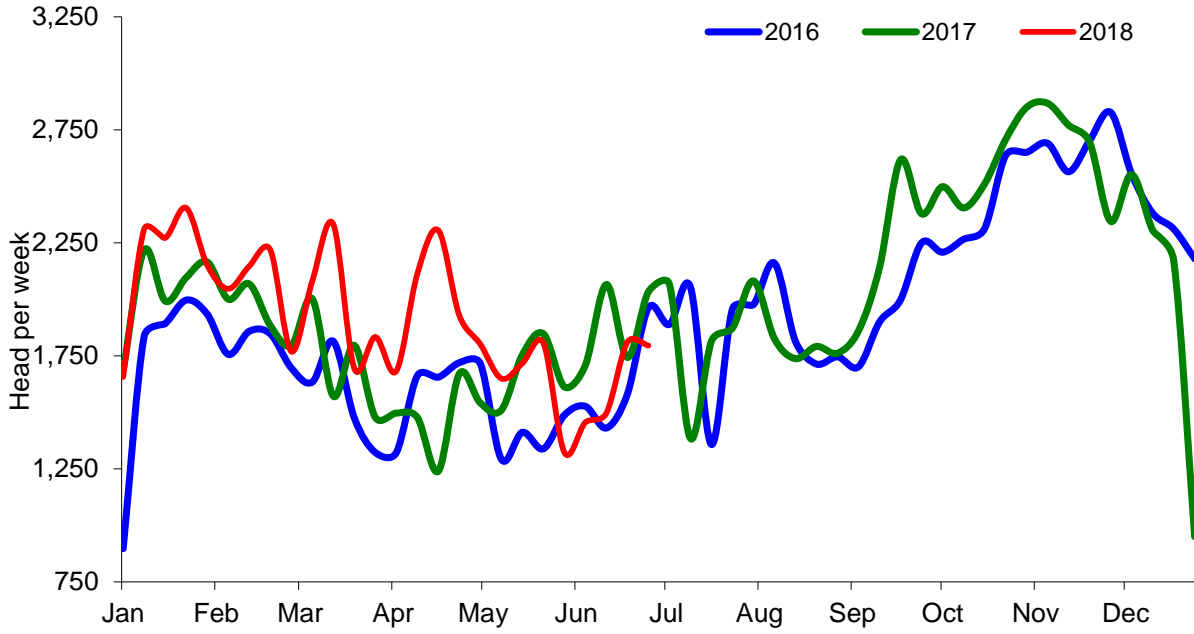
NI Clean Cattle Slaughtering – Cumulative



NI Weekly Clean Cattle Slaughtering

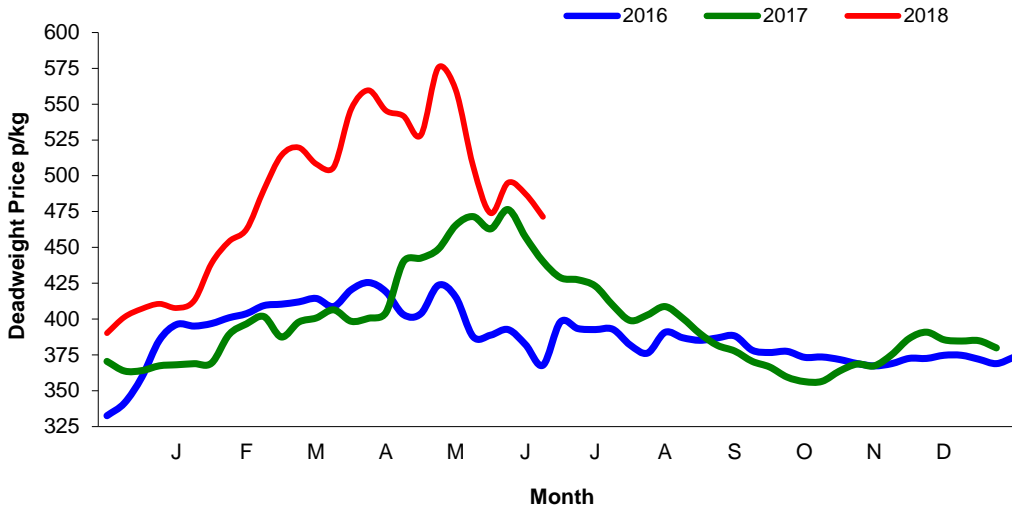


NI Weekly Cow Slaughtering



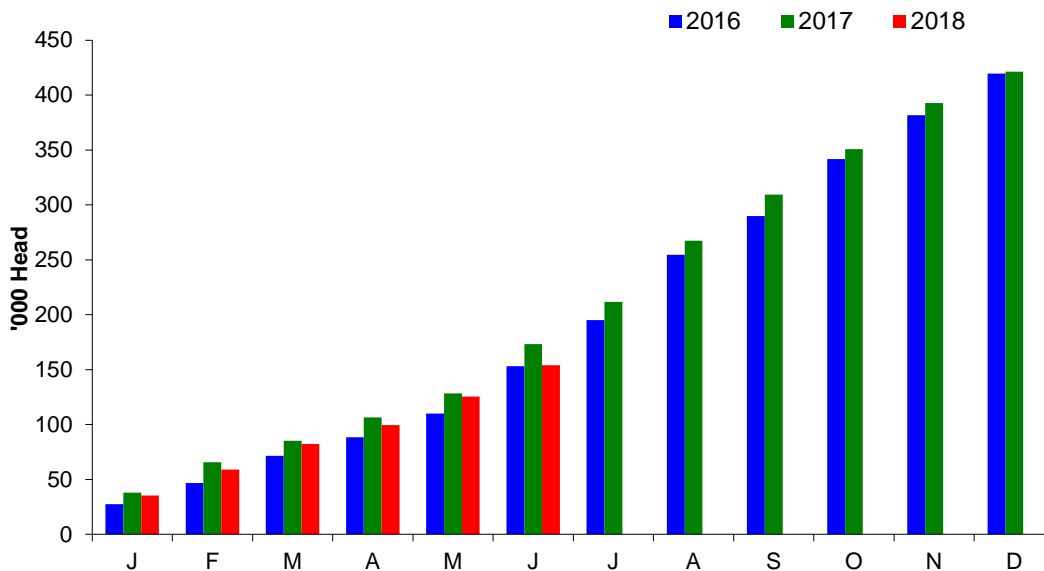
Sheep Prices

Average Deadweight NI Hogget / Lamb Price

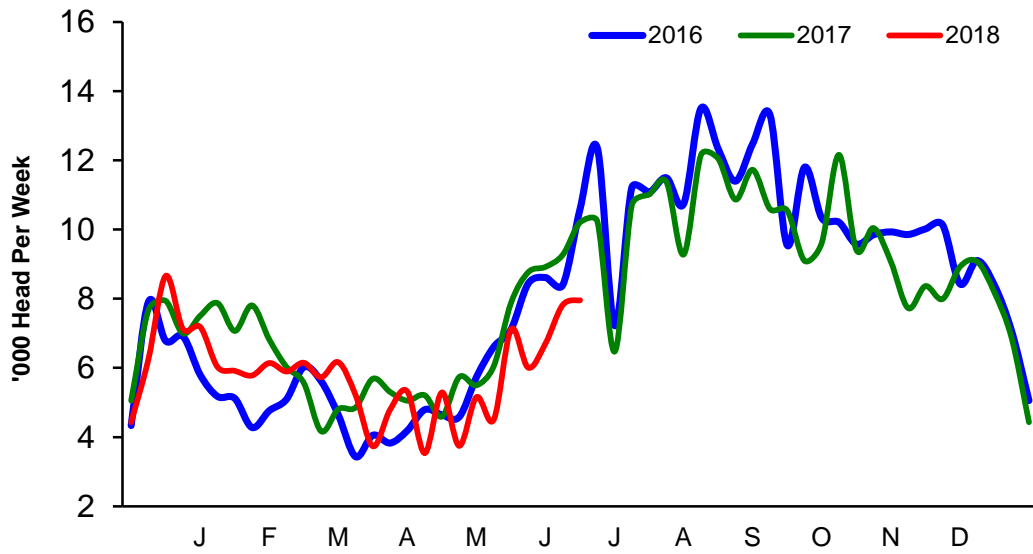


Sheep Slaughterings

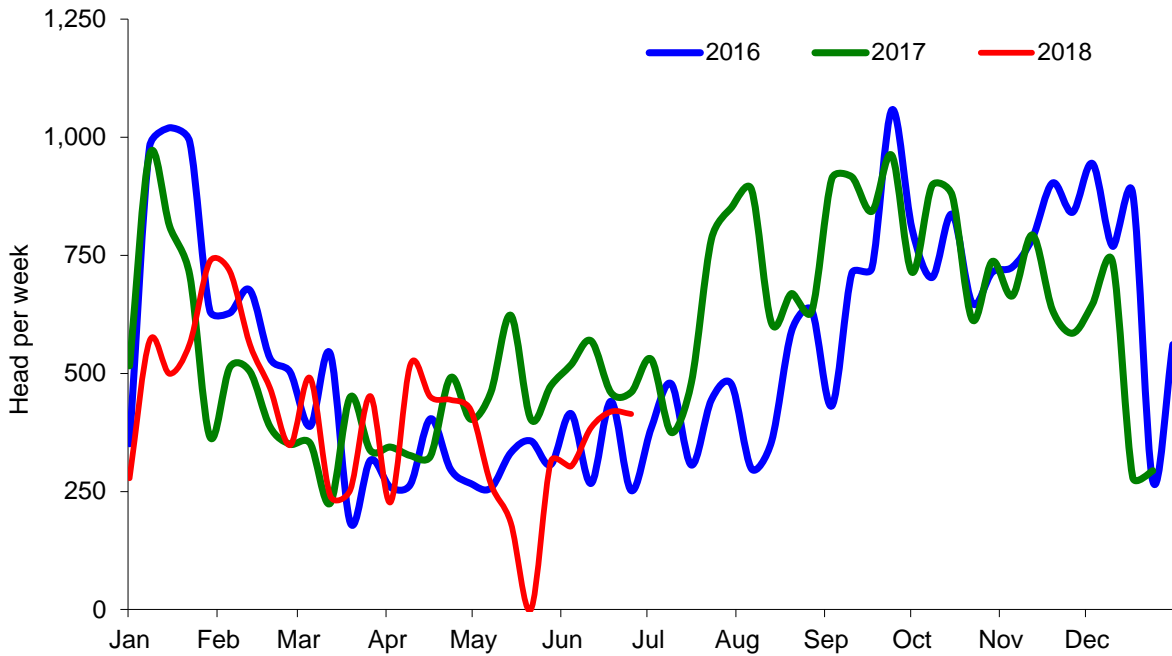
Cumulative Lamb & Hogget Slaughterings



Total Weekly Lamb & Hogget Slaughtering



Total Weekly Ewe and Ram Slaughtering



Market Information June 2018

Page 8

NI CATTLE AND SHEEP SLAUGHTERINGS FOR THE FOODCHAIN						
	June			Year to Date		
	(4 weeks ended 30/06/18)			(26 weeks ended 30/06/18)		
	Jun-17	Jun-18	% Change	2017	2018	Change
CATTLE						
Steers	11,213	9,857	-12%	83,404	79,438	-5%
Heifers	8,679	8,606	-1%	65,008	67,698	+4%
Young Bulls / Calves	4,158	4,459	+7%	18,492	20,961	+13%
Total Prime Cattle	24,050	22,922	-5%	166,904	168,097	+1%
Calves	412	441	+7%	3,034	3,022	-0%
Cows	7,552	6,560	-13%	46,466	49,814	+7%
Mature Bulls	295	292	-1%	1,709	1,828	+7%
Total Cattle	32,309	30,215	-6%	218,113	222,761	+2%
SHEEP						
Lambs & Hoggets	37,166	28,492	-23%	173,272	153,905	-11%
Ewes & Rams	2,006	1,521	-24%	12,336	10,525	-15%
Total Sheep	39,172	30,013	-23%	185,608	164,430	-11%
The above figures are provisional; any amendments will be incorporated in the cumulative data (source DAERA).						

NI BEEF AND SHEEPMEAT PRODUCTION - FOODCHAIN						
	June			Year to Date		
	(4 weeks ended 30/06/18)			(26 weeks ended 30/06/18)		
	Jun-17	Jun-18	% Change	2017	2018	Change
BEEF						
Steers	3,916	3,462	-12%	29,079	27,925	-4%
Heifers	2,722	2,715	-0%	20,398	21,390	+5%
Young Bulls	1,389	1,517	+9%	6,016	6,970	+16%
Total Prime Beef	8,027	7,694	-4%	55,494	56,285	+1%
Calves	85	82	-3%	579	575	-1%
Cows	2,292	2,045	-11%	13,957	15,003	+7%
Mature Bulls	132	129	-2%	791	797	+1%
Total Beef	10,536	9,951	-6%	70,821	72,660	+3%
SHEEPMEAT						
Lambs & Hoggets	776	595	-23%	3,817	3,298	-14%
Ewes & Rams	60	43	-29%	356	290	-18%
Total Sheepmeat	836	638	-24%	4,173	3,588	-14%
The above figures are provisional; any amendments will be incorporated in the cumulative data (source DAERA).						

Market Information June 2018
Page 9

Total Carcase Weight Produced for the Food Chain
Year-to-Date (tonnes – t.)

Month	Prime Cattle		Cows & Bulls		Lambs/Hoggets		Ewes & Rams	
	2017	2018	2017	2018	2017	2018	2017	2018
January	11,268	11,543	3,207	2,560	852	764	92	73
February	8,821	9,194	2,465	2,484	623	515	50	53
March	8,345	8,351	2,131	2,473	449	510	39	40
April	8,019	8,922	1,850	2,510	475	374	45	47
May	11,014	10,581	2,670	2,665	642	540	70	35
June	8,027	7,694	2,424	2,174	776	595	60	43
July								
August								
September								
October								
November								
December								
Total	55,494	56,286	14,747	14,866	3,817	3,298	355	290
Change (t.)	792		119		-519		-65	
% Change	1.43%		0.81%		-13.60%		-18.29%	

**excludes calves*

Change in Throughput / Production

Last 4 weeks 2017/2018

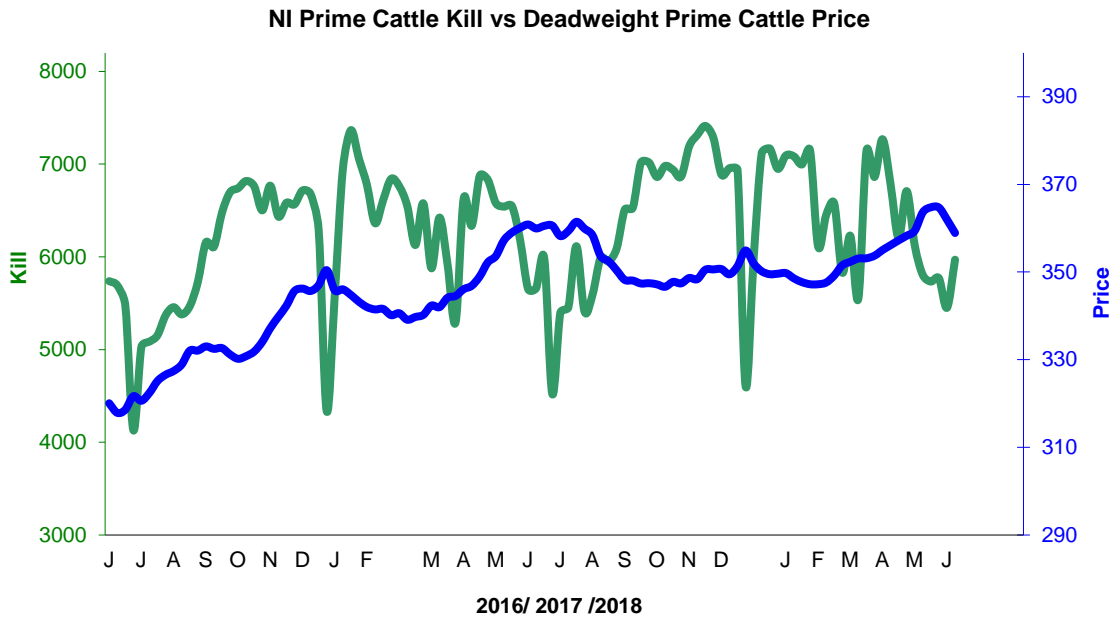
Change in Throughput / Production 2017/2018

June

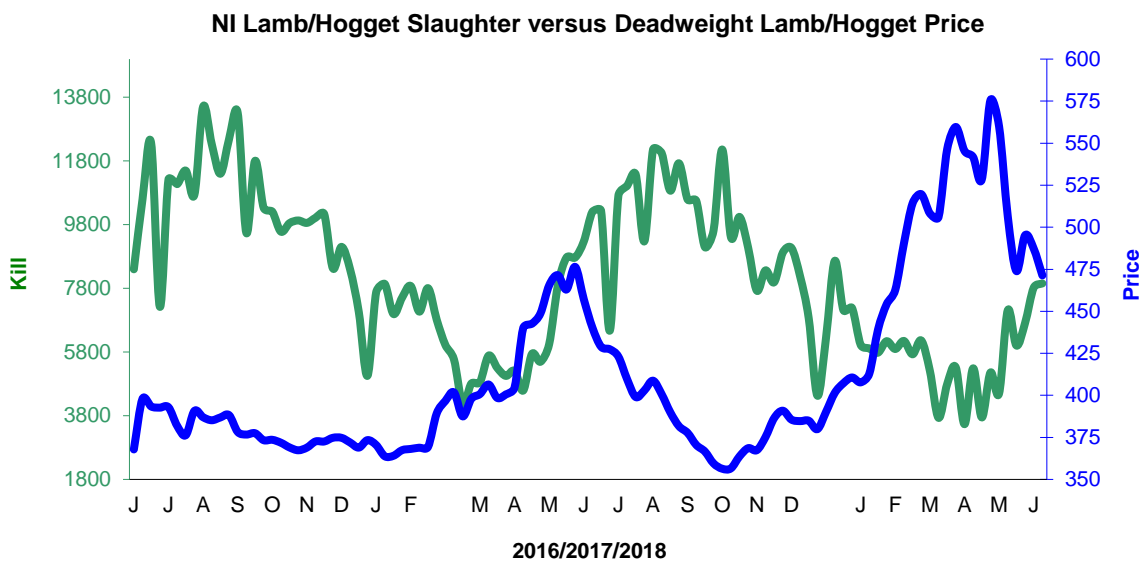
2017/2018	Number	Tonnage	ACW Kg
Prime	-4.7%	-4.1%	1.69
Cows	-13.1%	-10.8%	7.43
Total	-6.5%	-5.5%	3.19
Lamb	-23.3%	-23.3%	0.00
Ewes and Rams	-24.2%	-29.2%	-2.08
Total Sheep	-23.4%	-23.8%	-0.12

Supply and Price

NI Clean Cattle Kill vs. Average Clean Cattle Price



NI Lamb/Hogget Kill vs. Average Lamb / Hogget Price

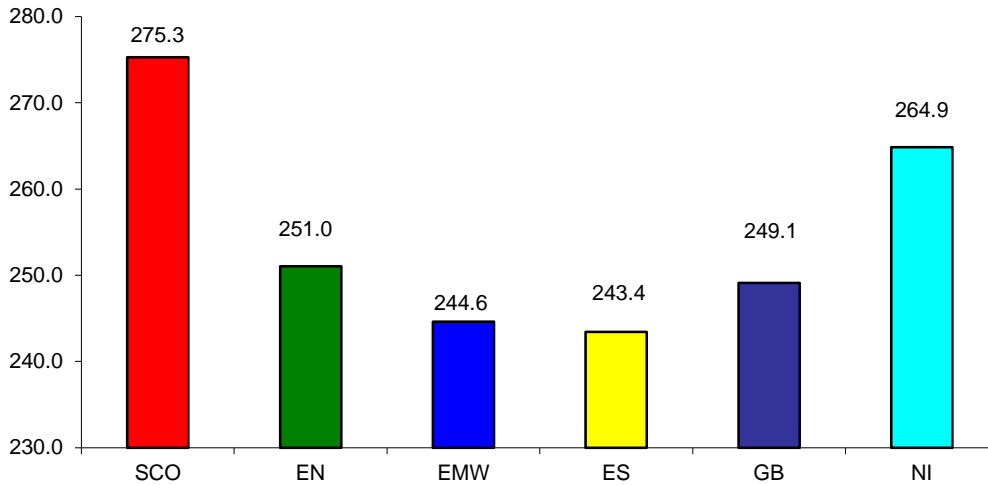


Green	Supply (Kill)
Blue	Price

BRITISH ISLES COMPARISONS

UK Average Cow Prices

52 Weeks to 30 June 2018

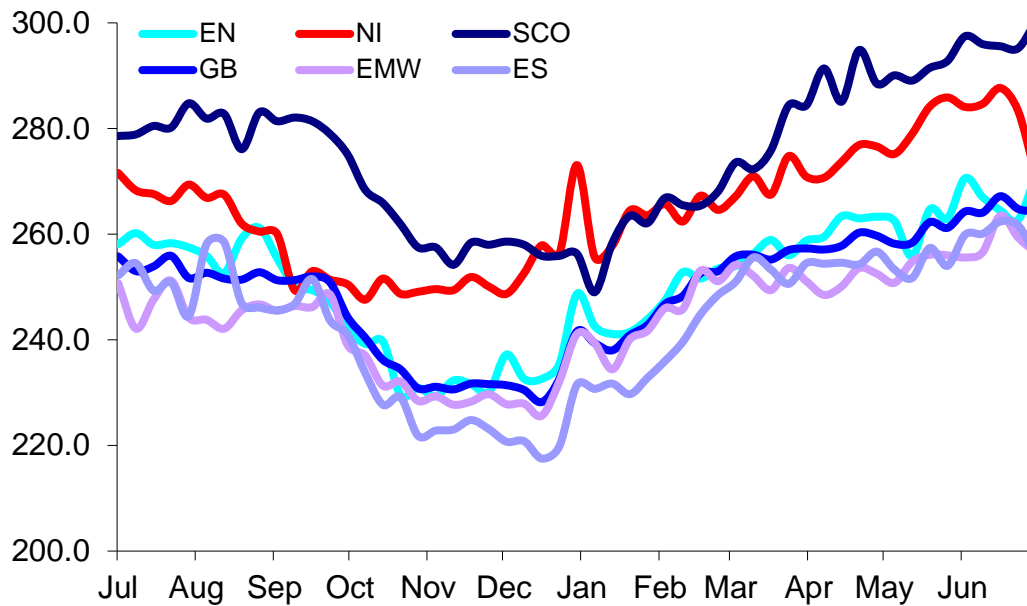


SCO	Scotland
EN	England North
EMW	England Midlands and Wales
ES	England South
NI	Northern Ireland
GB	Great Britain

Prices relate to UK Dressing Specification

Weekly UK Cow Prices

52 Weeks to 30 June 2018



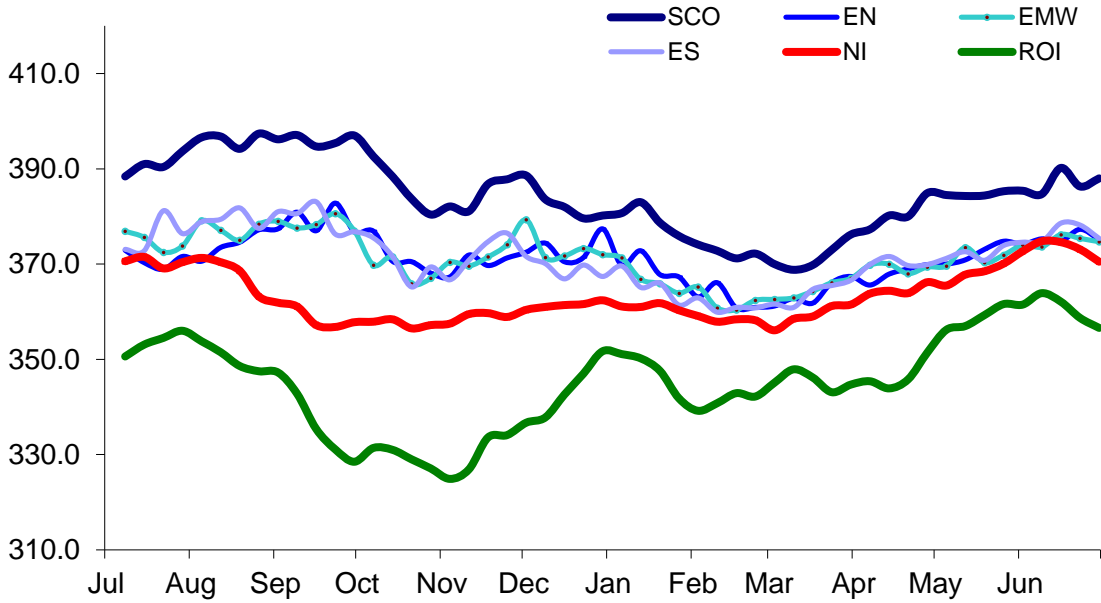
Market Information June 2018

Page 12

Prices relate to UK Dressing Specification

British Isles R3 Steer Price

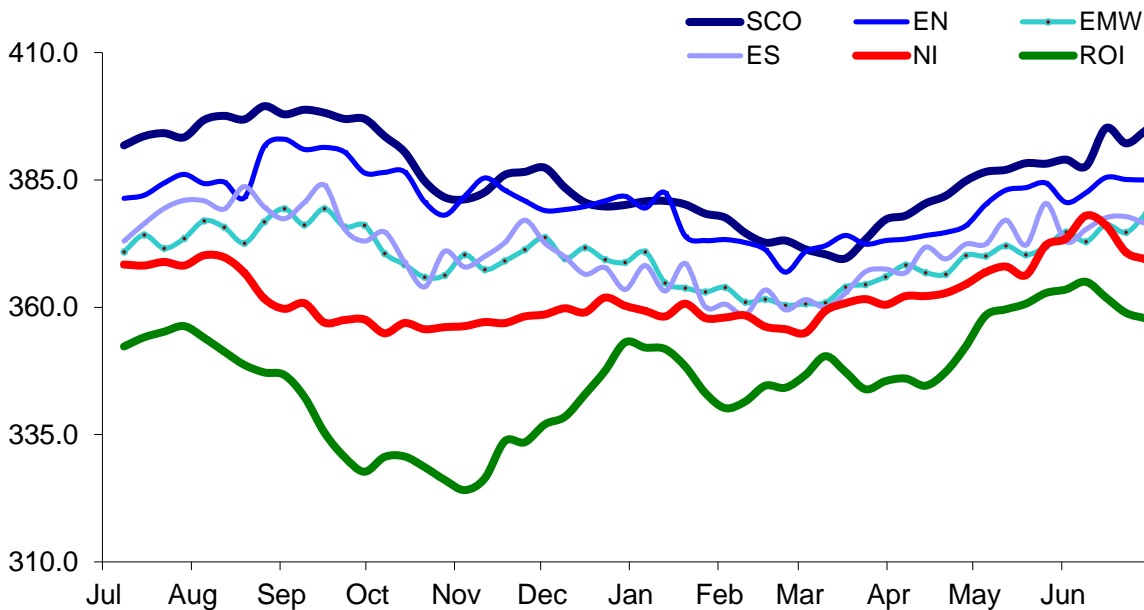
52 Weeks to 30 June 2018



Prices relate to UK Dressing Specification

British Isles R4 Steer Price

52 Weeks to 30 June 2018

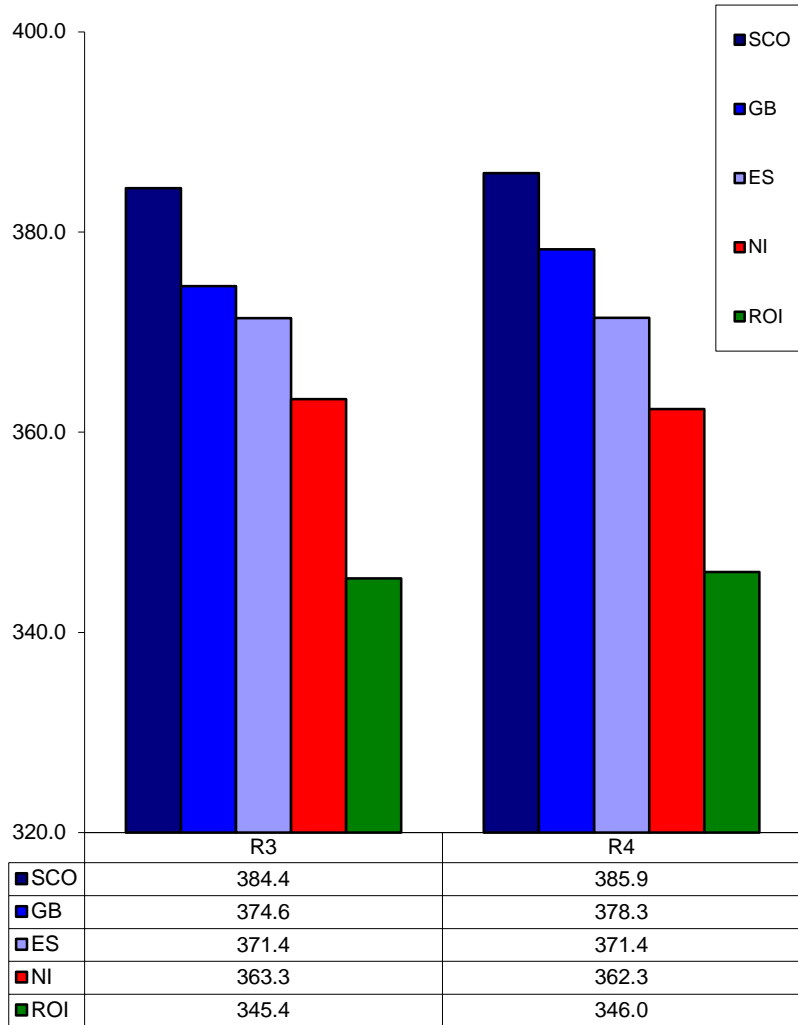


Prices relate to UK Dressing Specification

Market Information June 2018
Page 13

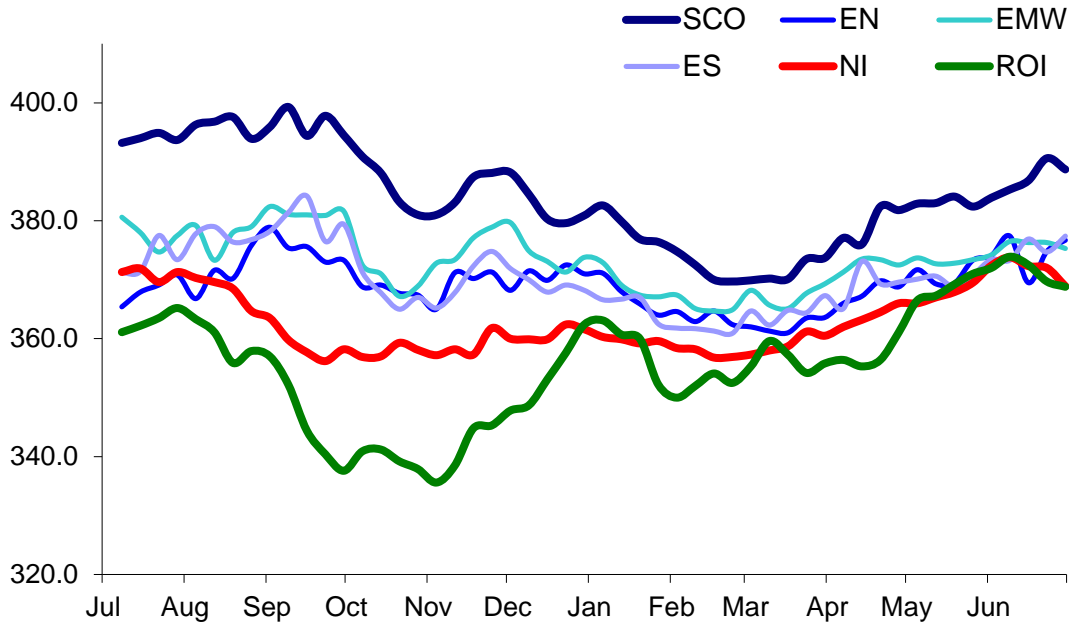
British Isles Average R3 and R4 Steer price

52 Weeks to 30 June 2018



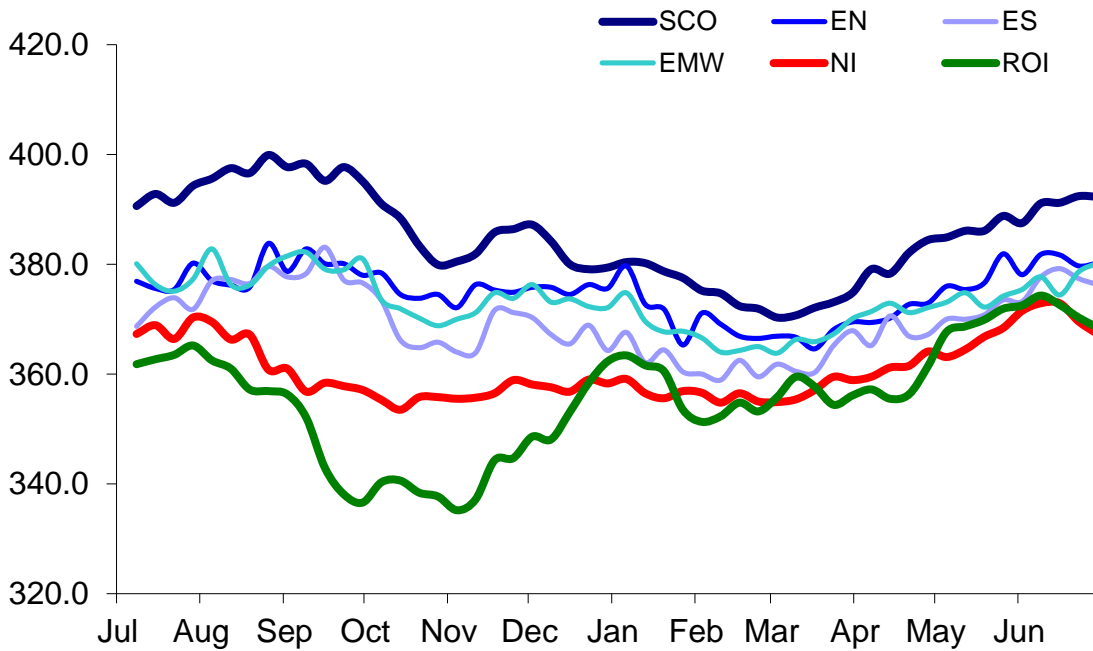
Prices relate to UK Dressing Specification

British Isles R3 Heifer Price
52 Weeks to 30 June 2018



Prices relate to UK Dressing Specification

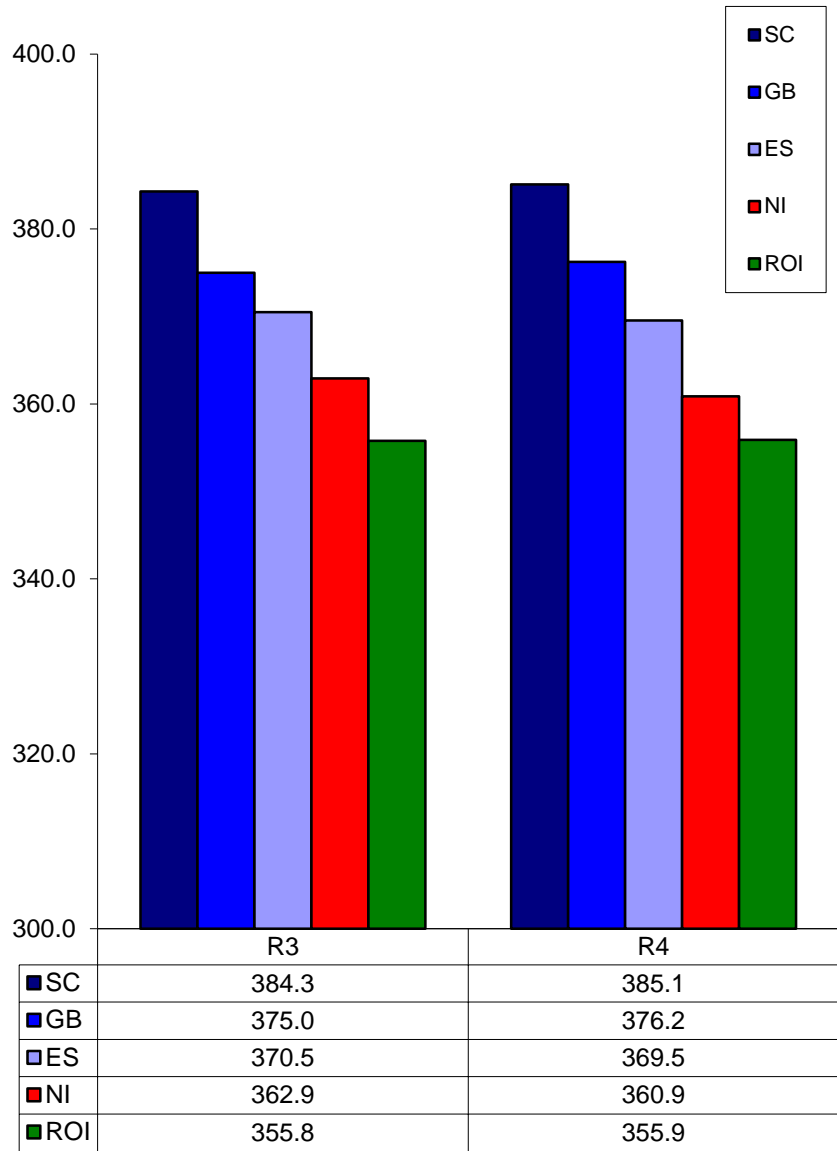
British Isles R4 Heifer Price
52 Weeks to 30 June 2018



Prices relate to UK Dressing Specification

British Isles Average R3 and R4 Heifer price

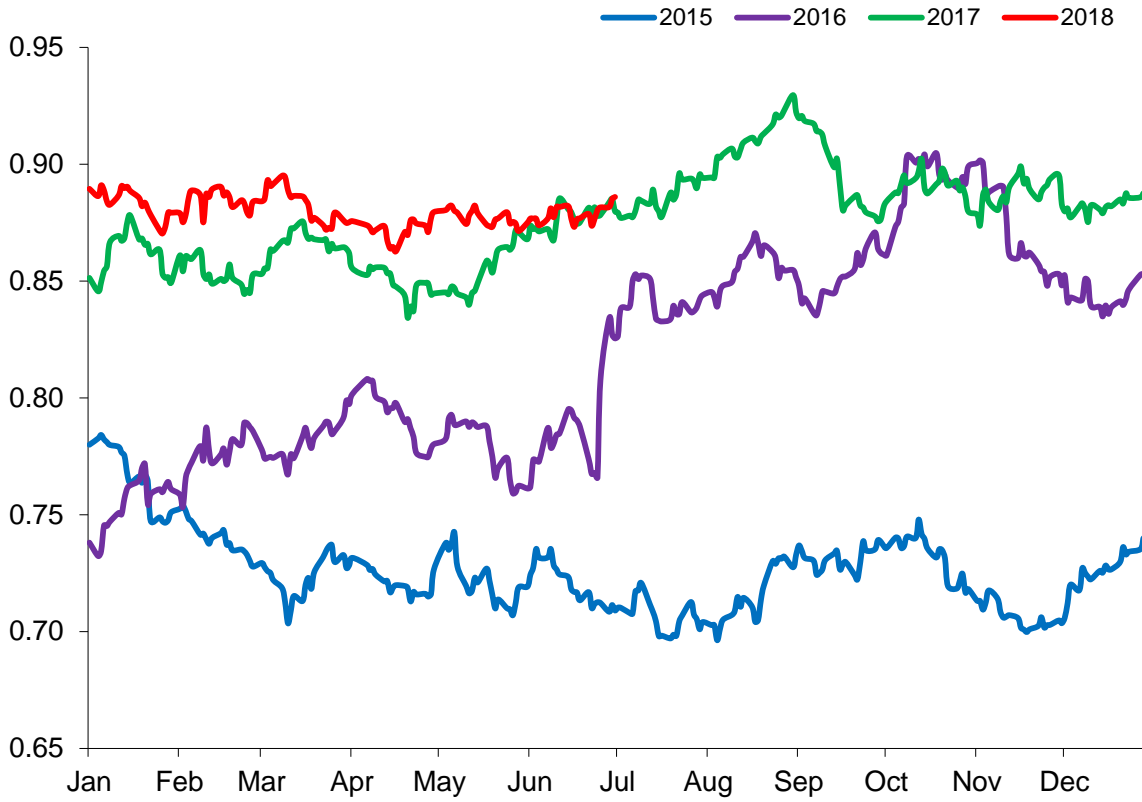
52 Weeks to 30 June 2018



Prices relate to UK Dressing Specification

Exchange Rate £ / Euro

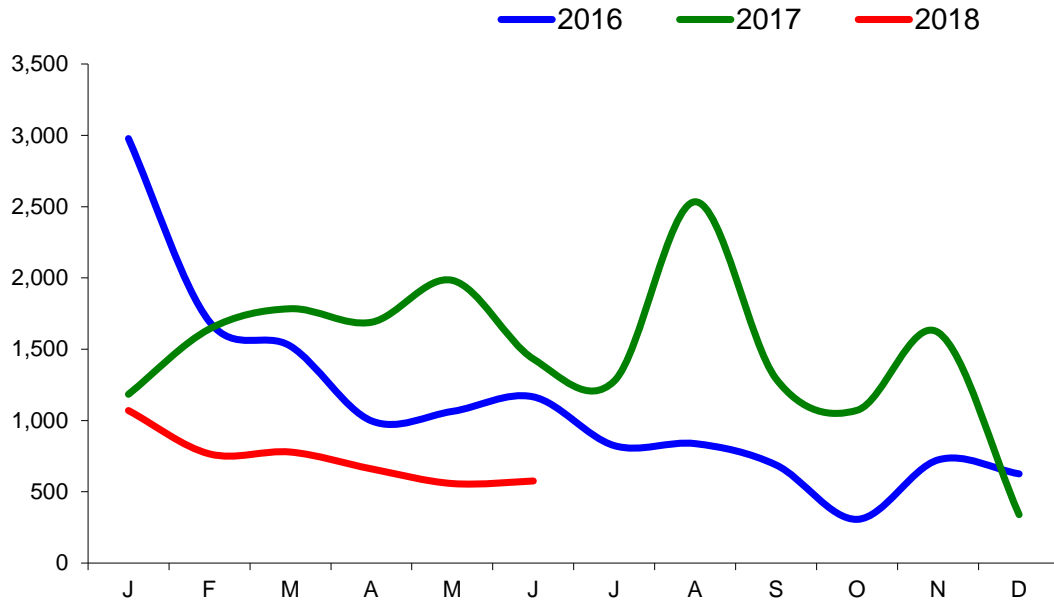
01 January 2015 –30 June 2018



Imports

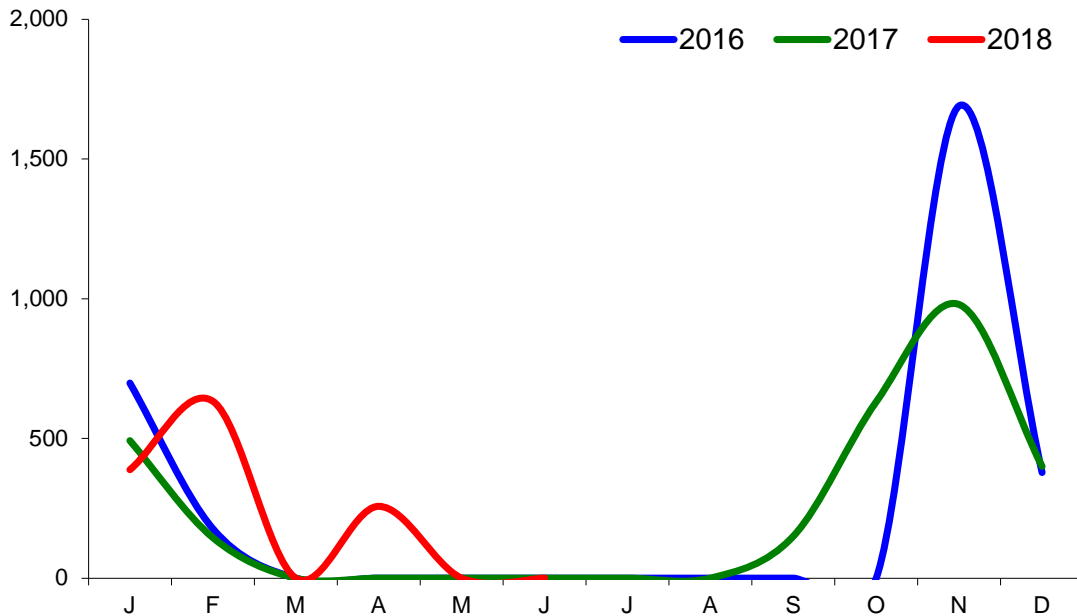
Monthly Live Imports of Cattle into NI for Direct Slaughter

From ROI and GB Combined



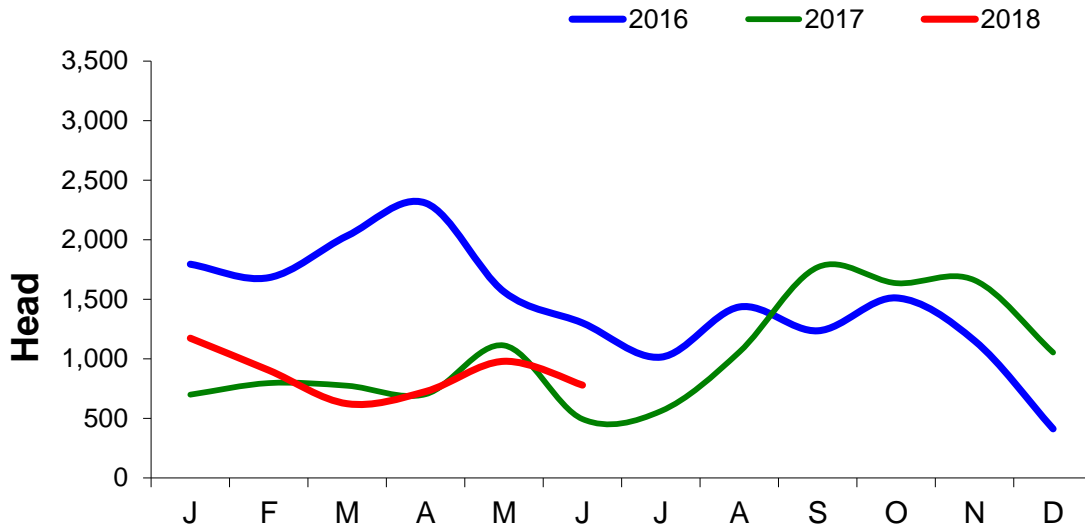
Monthly Live Imports of Sheep into NI for Direct Slaughter

From ROI and GB Combined



Exports

Monthly Live Exports of Cattle from NI into ROI and GB



Monthly Live Exports of Sheep from NI into ROI and GB

