



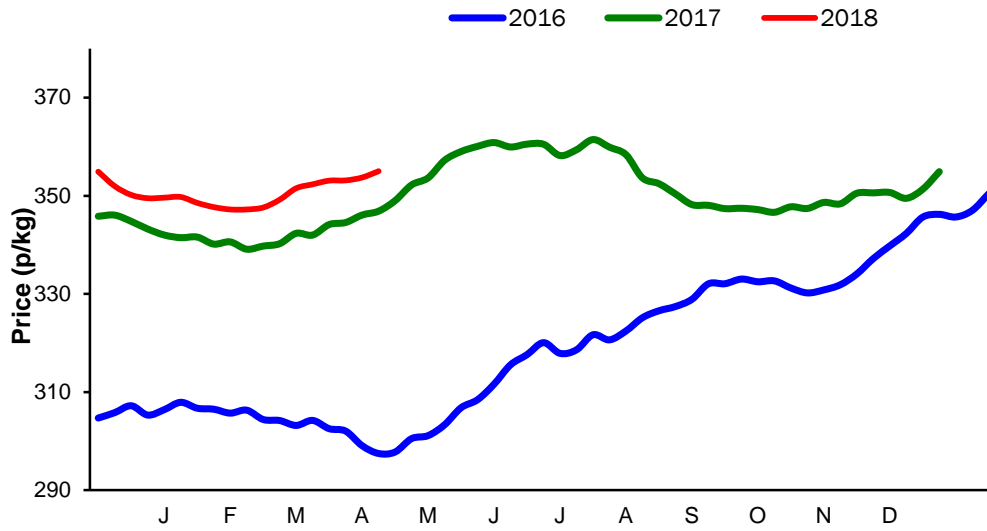
Monthly Economic Review
April 2018

Contents

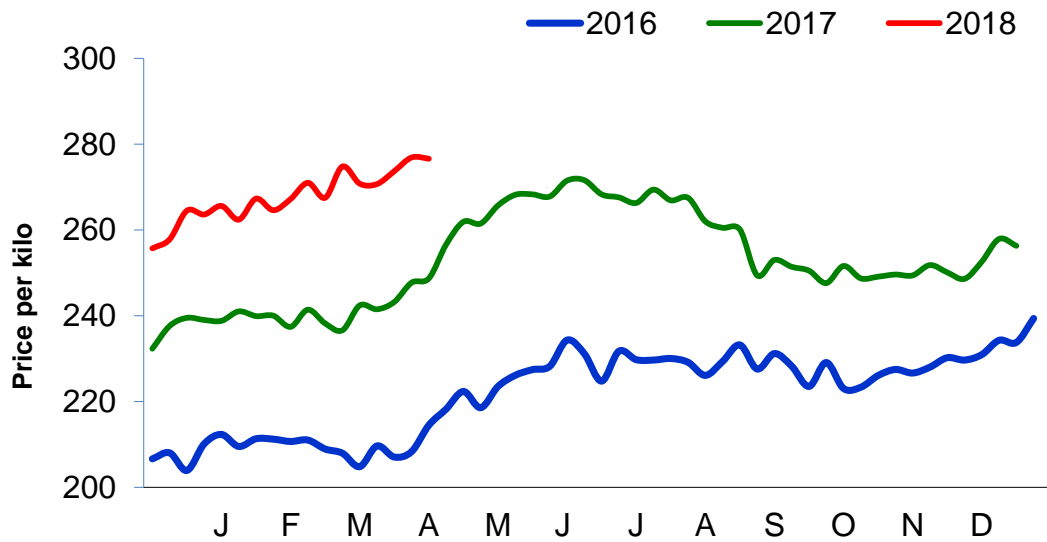
Contents.....	2
Cattle Prices	3
Average NI Clean Cattle Price	3
Average NI Cow Price.....	3
Cattle Slaughtering.....	4
NI Clean Cattle Slaughtering – Cumulative	4
NI Weekly Clean Cattle Slaughtering.....	4
NI Weekly Cow Slaughtering	5
Sheep Prices.....	6
Average NI Lamb / Hogget Price	6
Sheep Slaughtering.....	7
Cumulative Lamb & Hogget Slaughtering	7
Total Weekly Lamb & Hogget Slaughtering	7
Total Weekly Ewe and Ram Slaughtering.....	7
Total Carcase Weight Produced for the Food Chain.....	8
Change in Throughput / Production	9
Supply and Price.....	10
NI Lamb/Hogget Kill vs. Average Lamb / Hogget Price	10
NI Clean Cattle Kill vs. Average Clean Cattle Price.....	10
British Isles Price Comparisons	11
UK Average Cow Prices	11
Weekly UK Cow Prices	11
British Isles R3 Steer Price	12
British Isles R4 Steer Price	12
British Isles Average R3 and R4 Steer price	13
British Isles R3 Heifer Price	14
British Isles R4 Heifer Price	14
British Isles Average R3 and R4 Heifer price.....	15
Exchange Rate £ / Euro	16
Imports.....	17
Monthly Live Imports of Cattle into NI for Direct Slaughter	17
Monthly Live Imports of Sheep into NI for Direct Slaughter	17
Exports	18
Monthly Live Exports of Cattle from NI into RoI and GB.....	18
Monthly live Exports of Sheep from NI into RoI and GB	18

Cattle Prices

Average NI Clean Cattle Price

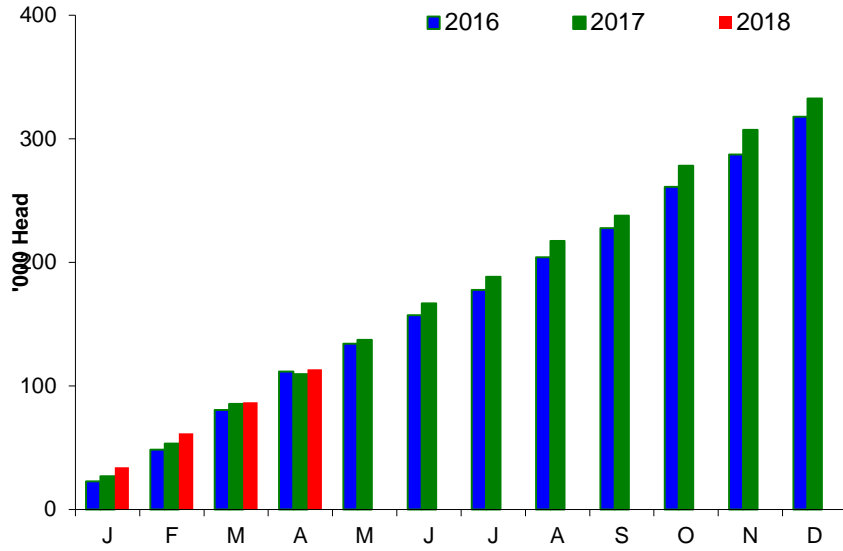


Average NI Cow Price

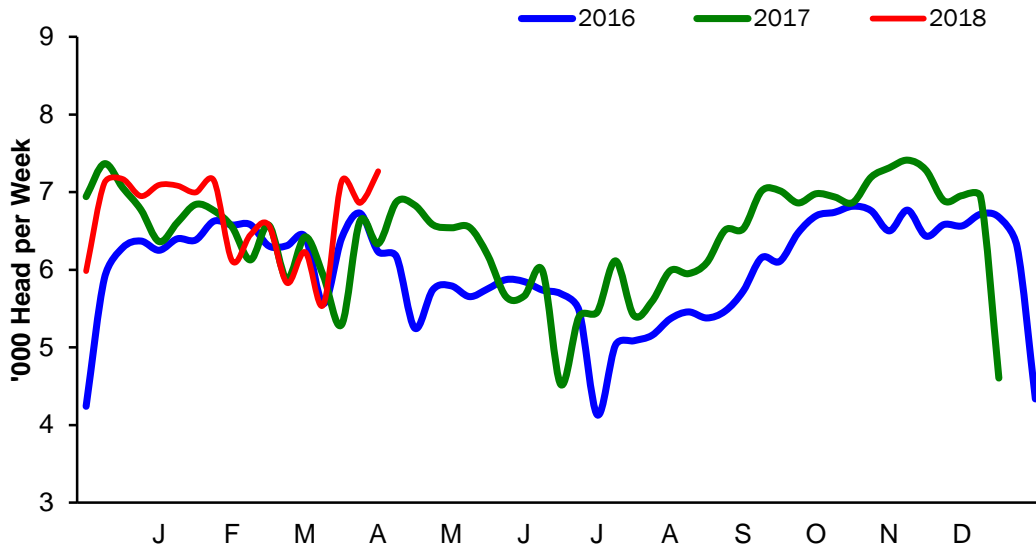


Cattle Slaughtering

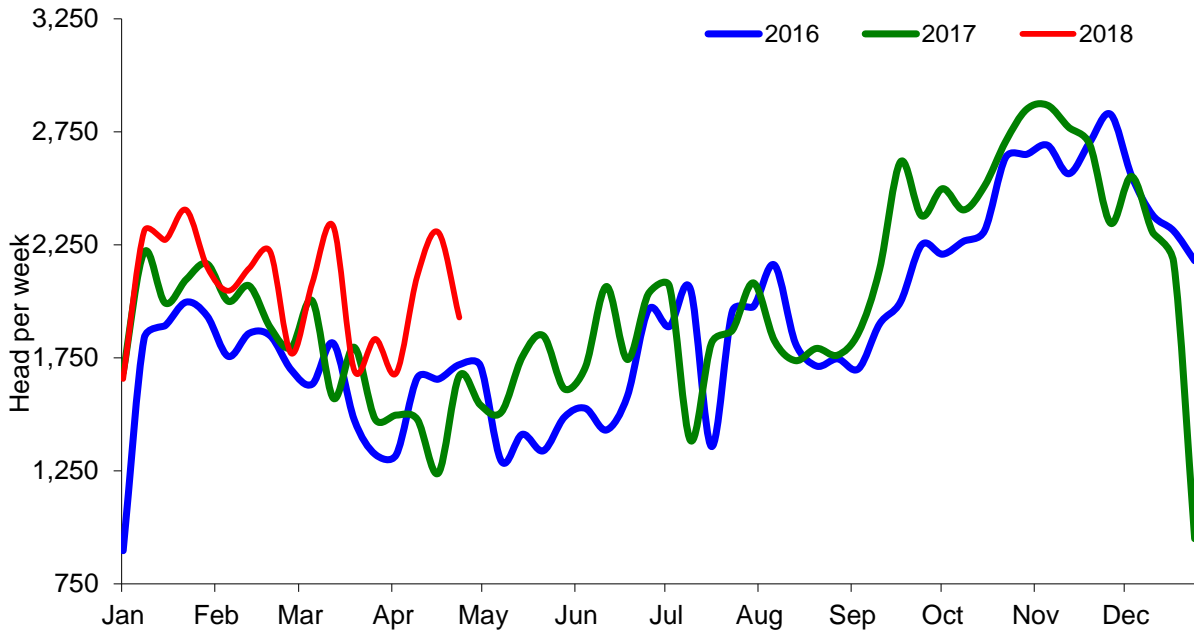
NI Clean Cattle Slaughtering – Cumulative



NI Weekly Clean Cattle Slaughtering

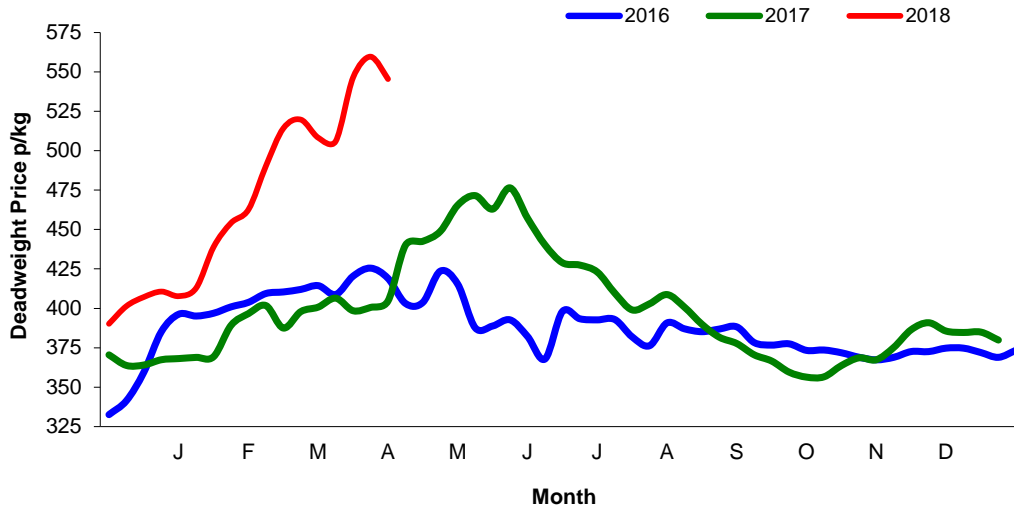


NI Weekly Cow Slaughtering



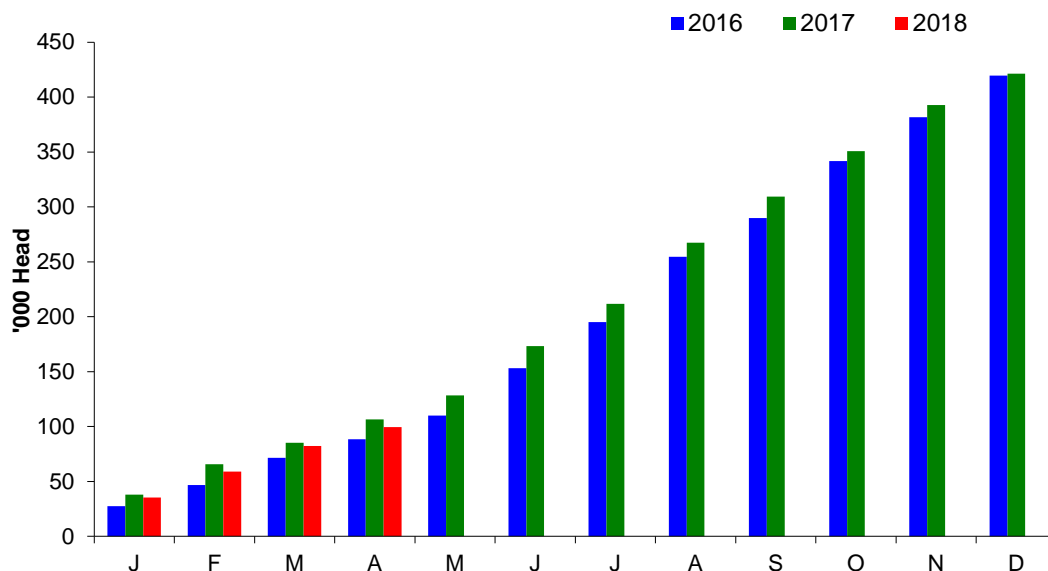
Sheep Prices

Average Deadweight NI Hogget / Lamb Price

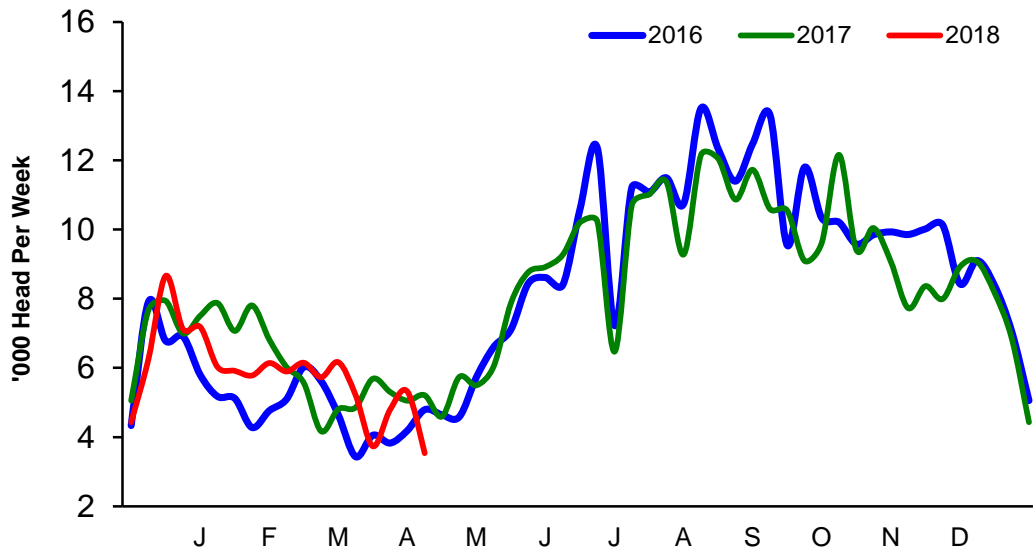


Sheep Slaughterings

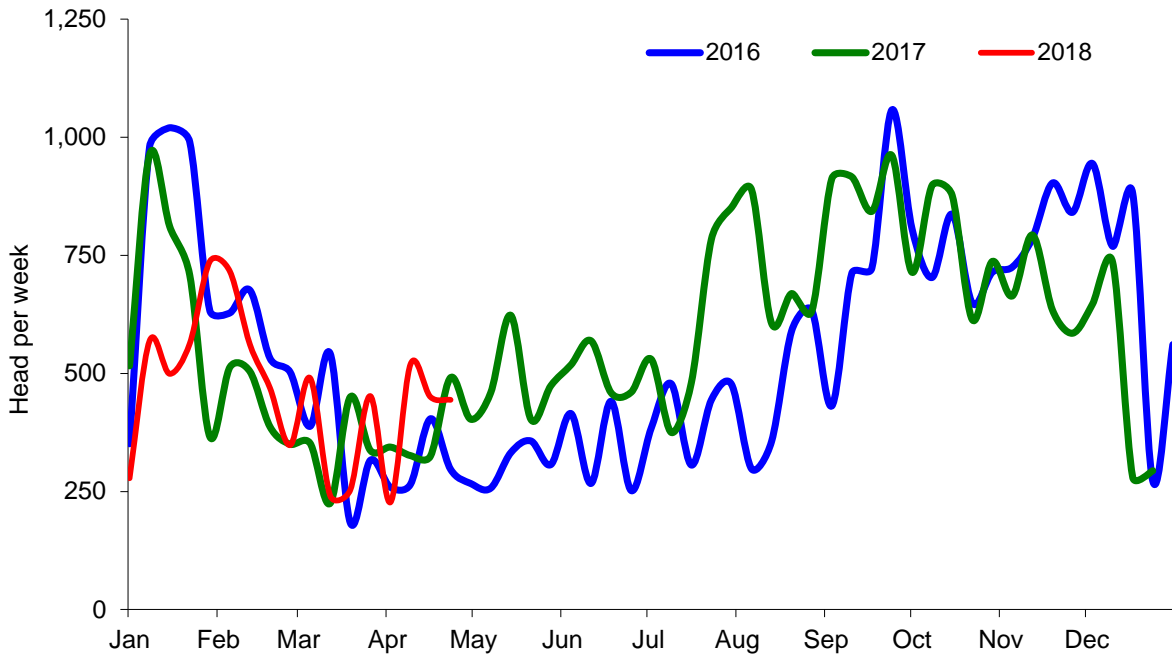
Cumulative Lamb & Hogget Slaughterings



Total Weekly Lamb & Hogget Slaughtering



Total Weekly Ewe and Ram Slaughtering



Market Information April 2018
Page 8

NI CATTLE AND SHEEP SLAUGHTERINGS FOR THE FOODCHAIN						
	April			Year to Date		
	(4 weeks ended 28/04/18)			(17 weeks ended 28/04/18)		
	Apr-17	Apr-18	% Change	2017	2018	Change
CATTLE						
Steers	12,192	12,454	+2%	55,923	54,804	-2%
Heifers	9,576	11,196	+17%	43,517	46,805	+8%
Young Bulls / Calves	2,496	3,171	+27%	10,254	11,950	+17%
Total Prime Cattle	24,264	26,821	+11%	109,694	113,559	+4%
Calves	441	463	+5%	2,168	2,033	-6%
Cows	5,886	8,031	+36%	30,646	34,955	+14%
Mature Bulls	254	309	+22%	1,089	1,184	+9%
Total Cattle	30,845	35,624	+15%	143,597	151,731	+6%
SHEEP						
Lambs & Hoggets	21,251	17,378	-18%	106,354	99,609	-6%
Ewes & Rams	1,486	1,640	+10%	7,968	7,816	-2%
Total Sheep	22,737	19,018	-16%	114,322	107,425	-6%

The above figures are provisional; any amendments will be incorporated in the cumulative data (source DAERA).

NI BEEF AND SHEEPMEAT PRODUCTION - FOODCHAIN						
	April			Year to Date		
	(4 weeks ended 28/04/18)			(17 weeks ended 28/04/18)		
	Apr-17	Apr-18	% Change	2017	2018	Change
BEEF						
Steers	4,232	4,358	+3%	19,512	19,286	-1%
Heifers	2,984	3,514	+18%	13,655	14,804	+8%
Young Bulls	803	1,051	+31%	3,286	3,920	+19%
Total Prime Beef	8,019	8,922	+11%	36,453	38,011	+4%
Calves	76	87	+14%	416	388	-7%
Cows	1,734	2,375	+37%	9,146	10,447	+14%
Mature Bulls	116	135	+16%	507	512	+1%
Total Beef	9,946	11,519	+16%	46,523	49,358	+6%
SHEEPMEAT						
Lambs & Hoggets	475	374	-21%	2,399	2,163	-10%
Ewes & Rams	45	47	+5%	225	212	-6%
Total Sheepmeat	520	421	-19%	2,624	2,375	-9%

The above figures are provisional; any amendments will be incorporated in the cumulative data (source DAERA).

Market Information April 2018
Page 9

Total Carcase Weight Produced for the Food Chain
Year-to-Date (tonnes – t.)

Month	Prime Cattle		Cows & Bulls		Lambs/Hoggets		Ewes & Rams	
	2017	2018	2017	2018	2017	2018	2017	2018
January	11,268	11,543	3,050	3,250	852	764	92	73
February	8,821	9,194	2,337	2,448	623	515	50	53
March	8,345	8,351	2,025	2,374	449	510	39	40
April	8,019	8,922	1,734	2,375	475	374	45	47
May								
June								
July								
August								
September								
October								
November								
December								
Total	36,453	38,011	9,146	10,447	2,399	2,163	225	212
Change (t.)	1,558		1,301		-236		-13	
% Change	4.27%		14.22%		-9.85%		-5.76%	

**excludes calves*

Change in Throughput / Production

Last 4 weeks 2017/2018

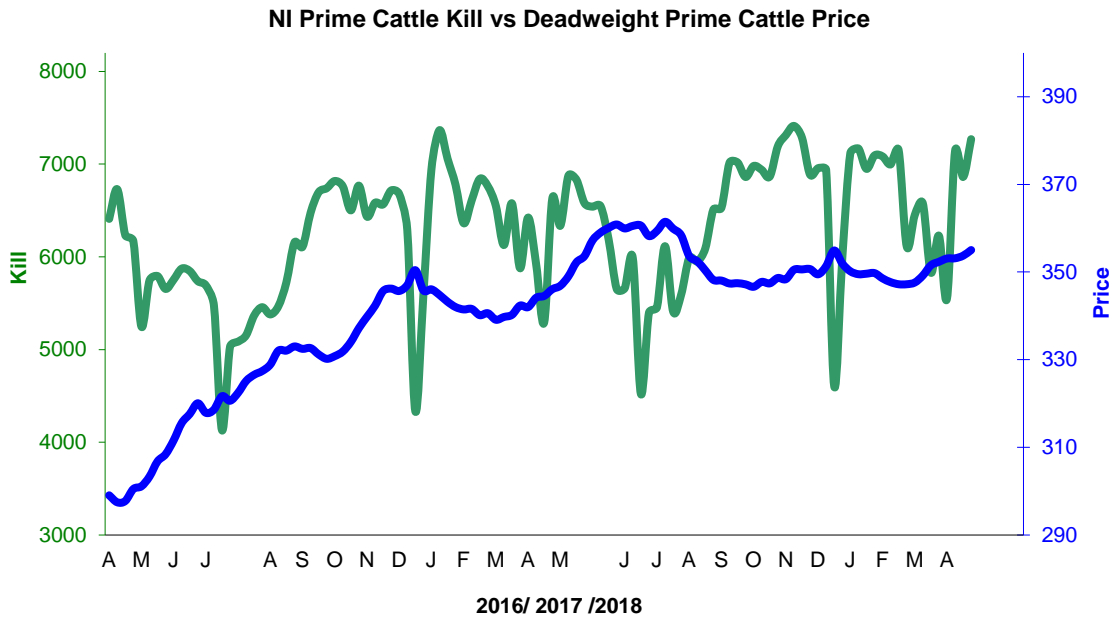
Change in Throughput / Production 2017/2018

April

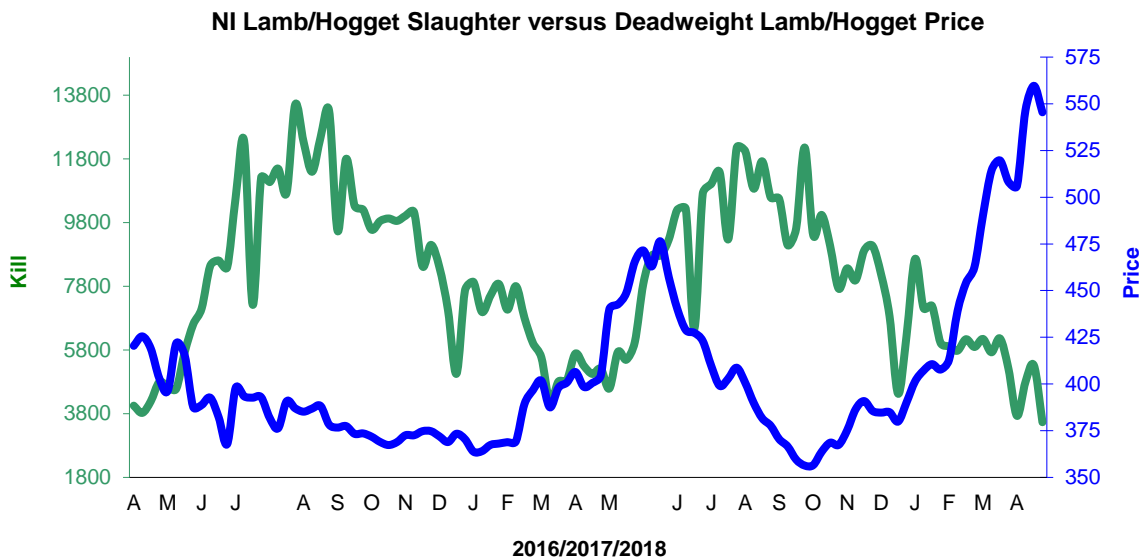
2017/2018	Number	Tonnage	ACW Kg
Prime	10.5%	11.3%	2.05
Cows	36.4%	37.0%	0.49
Total	15.5%	15.8%	0.69
Lamb	-18.2%	-21.3%	-0.86
Ewes and Rams	10.4%	5.2%	-1.60
Total Sheep	-16.4%	-19.1%	-0.75

Supply and Price

NI Clean Cattle Kill vs. Average Clean Cattle Price



NI Lamb/Hogget Kill vs. Average Lamb / Hogget Price

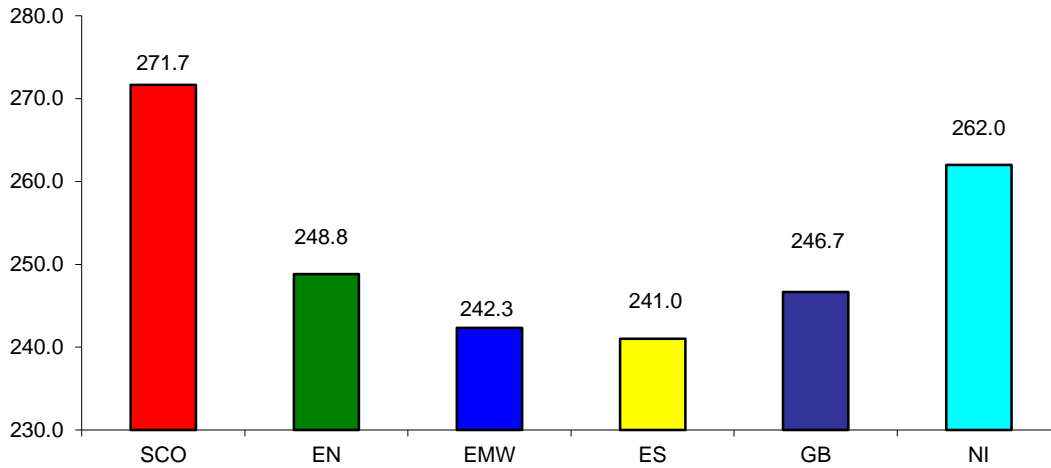


Green	Supply (Kill)
Blue	Price

BRITISH ISLES COMPARISONS

UK Average Cow Prices

52 Weeks to 28 April 2018

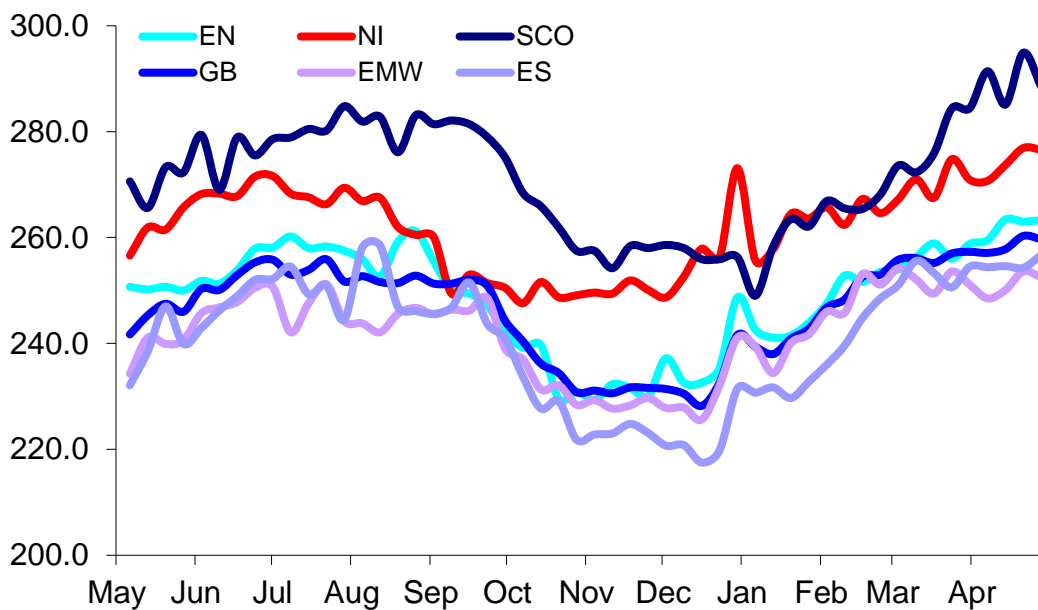


SCO	Scotland
EN	England North
EMW	England Midlands and Wales
ES	England South
NI	Northern Ireland
GB	Great Britain

Prices relate to UK Dressing Specification

Weekly UK Cow Prices

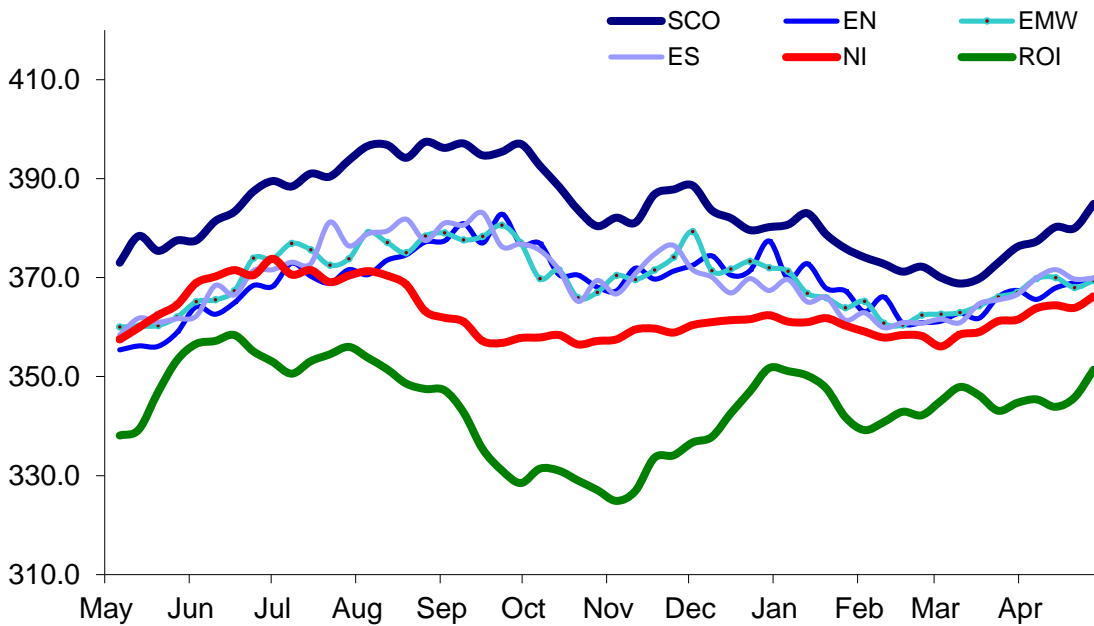
52 Weeks to 28 April 2018



Prices relate to UK Dressing Specification

British Isles R3 Steer Price

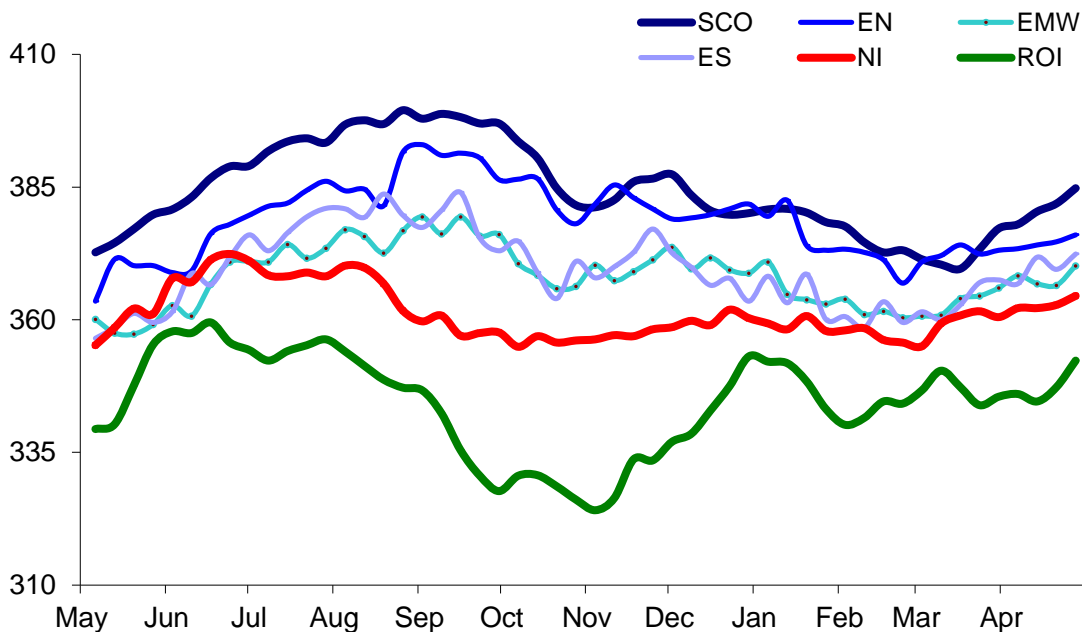
52 Weeks to 28 April 2018



Prices relate to UK Dressing Specification

British Isles R4 Steer Price

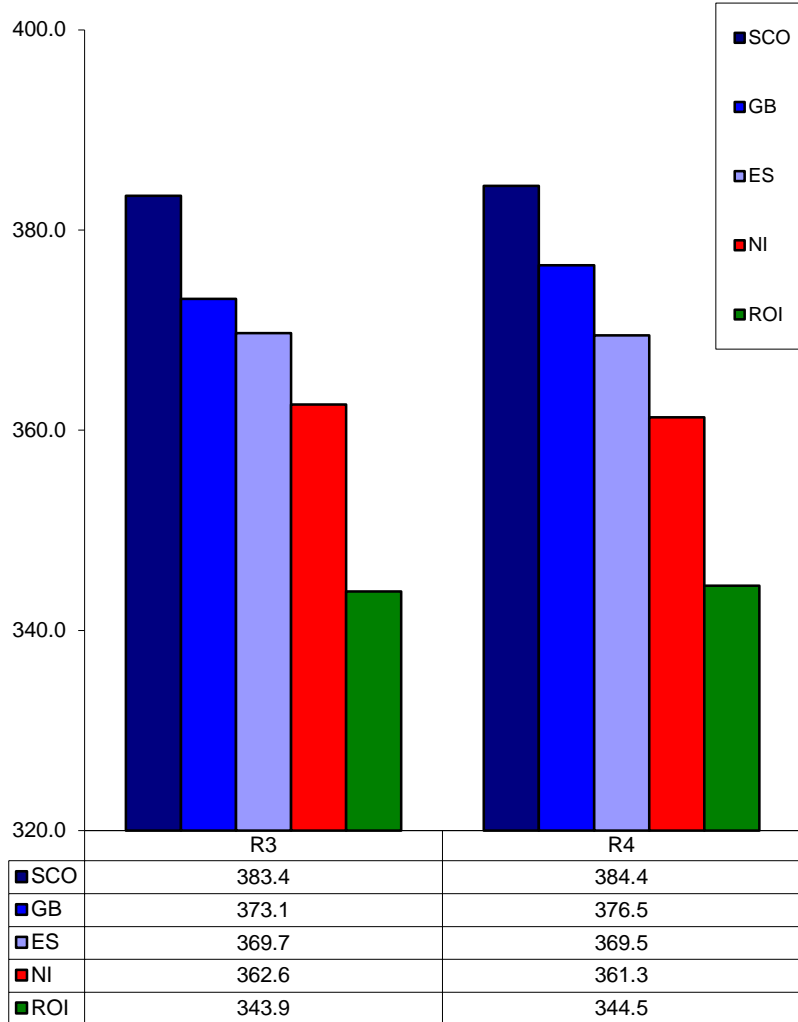
52 Weeks to 28 April 2018



Prices relate to UK Dressing Specification

British Isles Average R3 and R4 Steer price

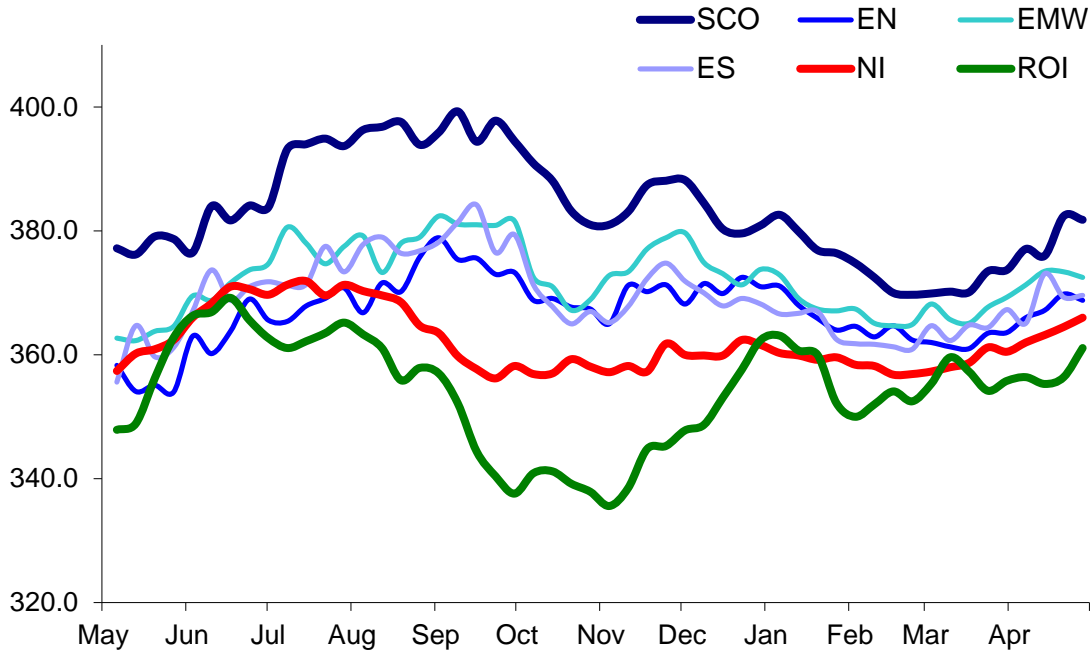
52 Weeks to 28 April 2018



Prices relate to UK Dressing Specification

British Isles R3 Heifer Price

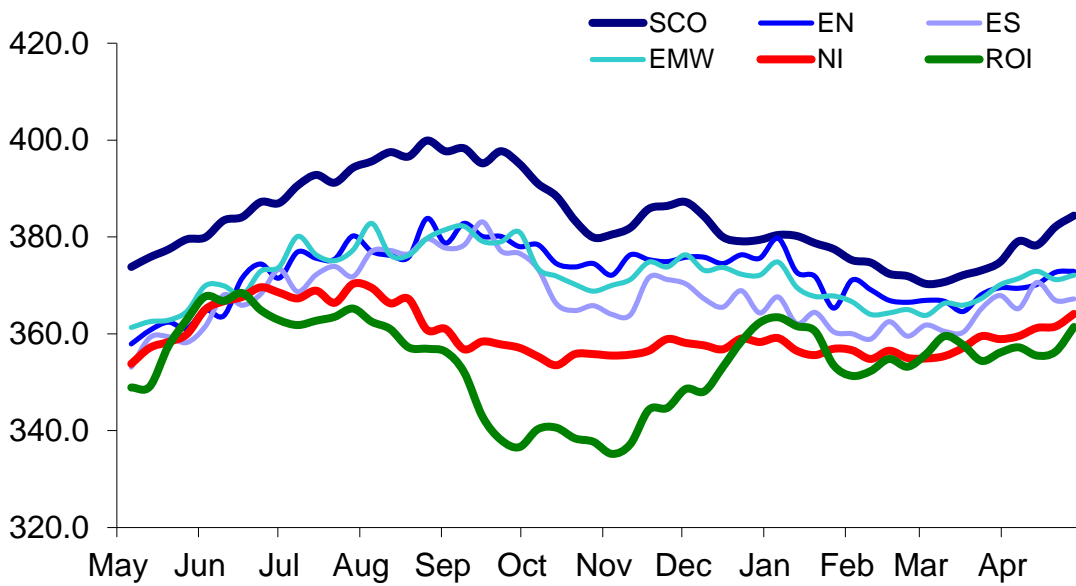
52 Weeks to 28 April 2018



Prices relate to UK Dressing Specification

British Isles R4 Heifer Price

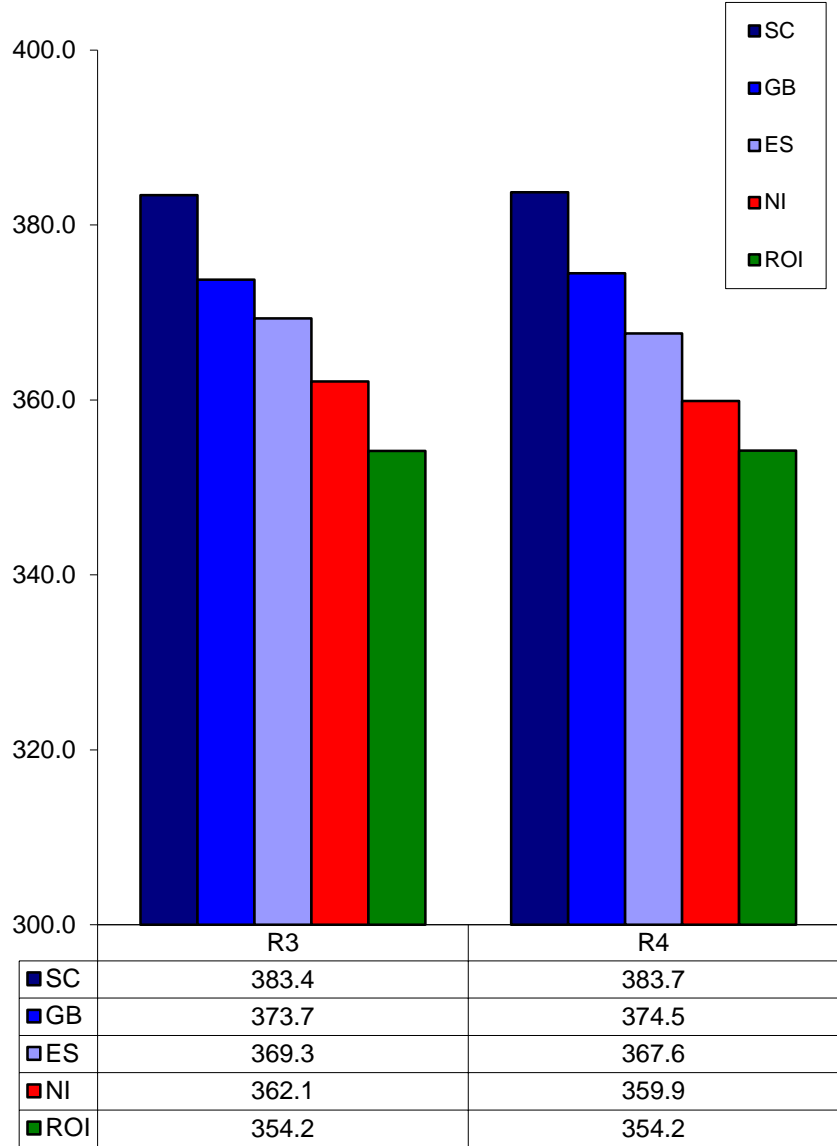
52 Weeks to 28 April 2018



Prices relate to UK Dressing Specification

British Isles Average R3 and R4 Heifer price

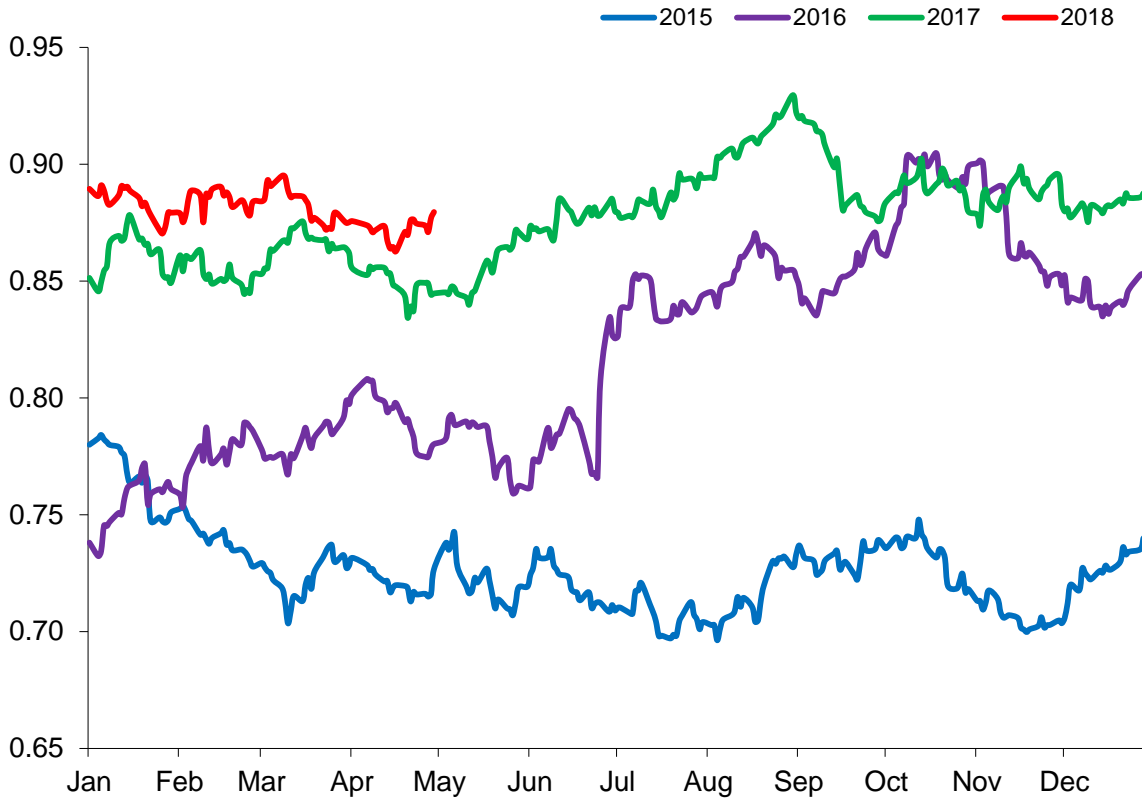
52 Weeks to 28 April 2018



Prices relate to UK Dressing Specification

Exchange Rate £ / Euro

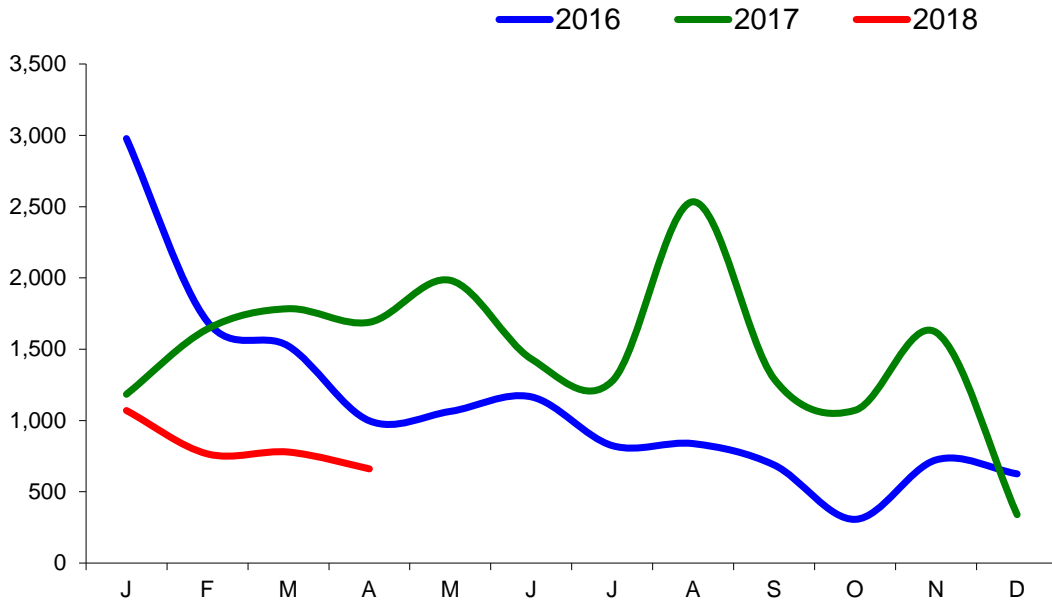
01 January 2015 –30 April 2018



Imports

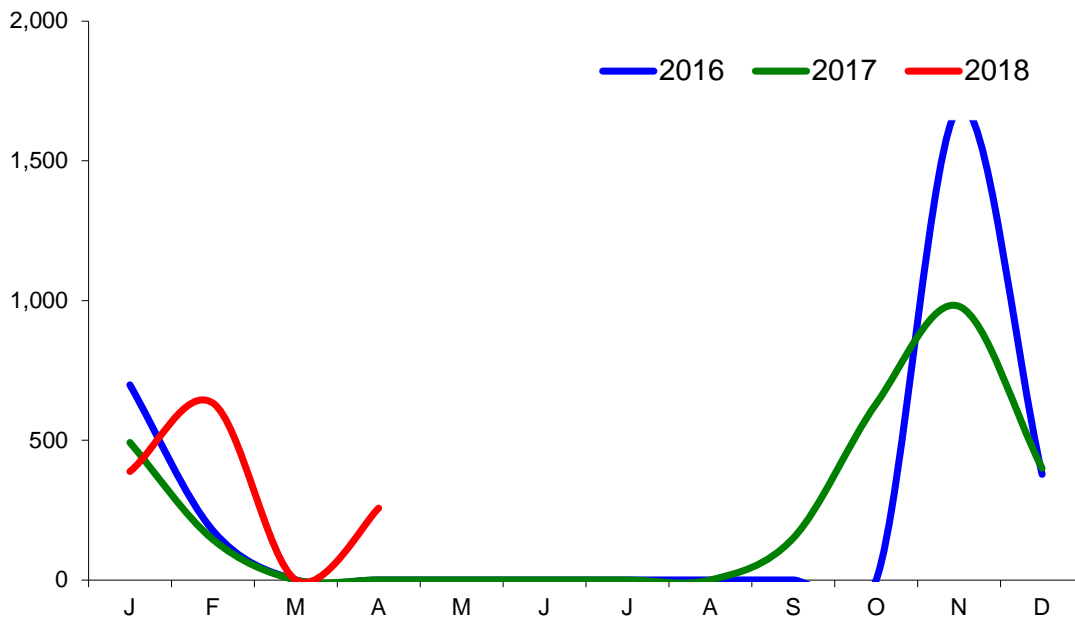
Monthly Live Imports of Cattle into NI for Direct Slaughter

From ROI and GB Combined



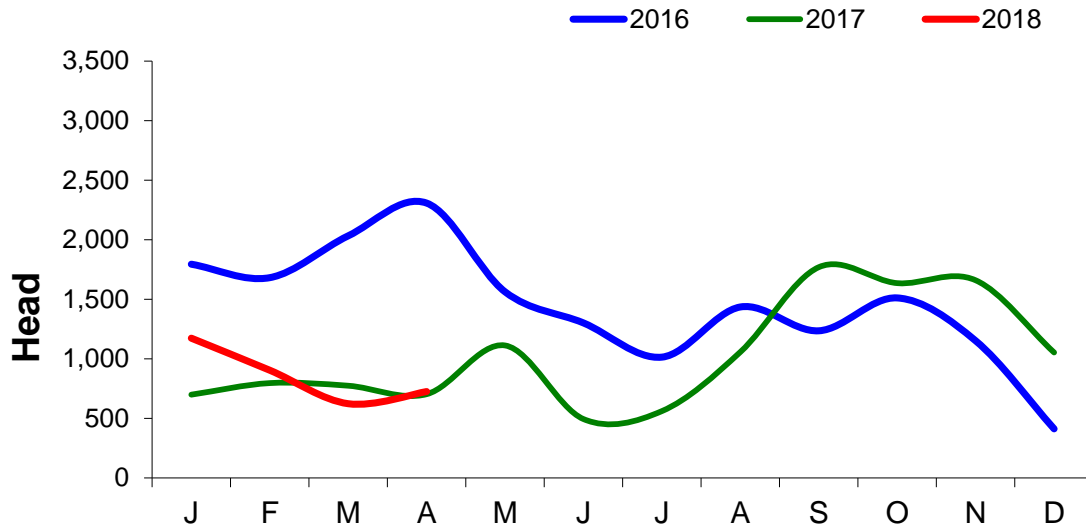
Monthly Live Imports of Sheep into NI for Direct Slaughter

From ROI and GB Combined



Exports

Monthly Live Exports of Cattle from NI into ROI and GB



Monthly Live Exports of Sheep from NI into ROI and GB

