



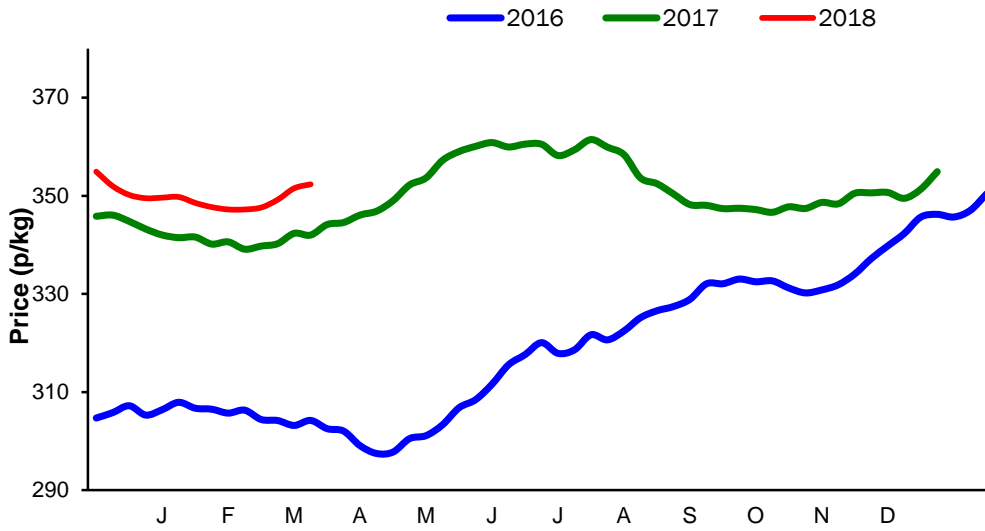
Monthly Economic Review
March 2018

Contents

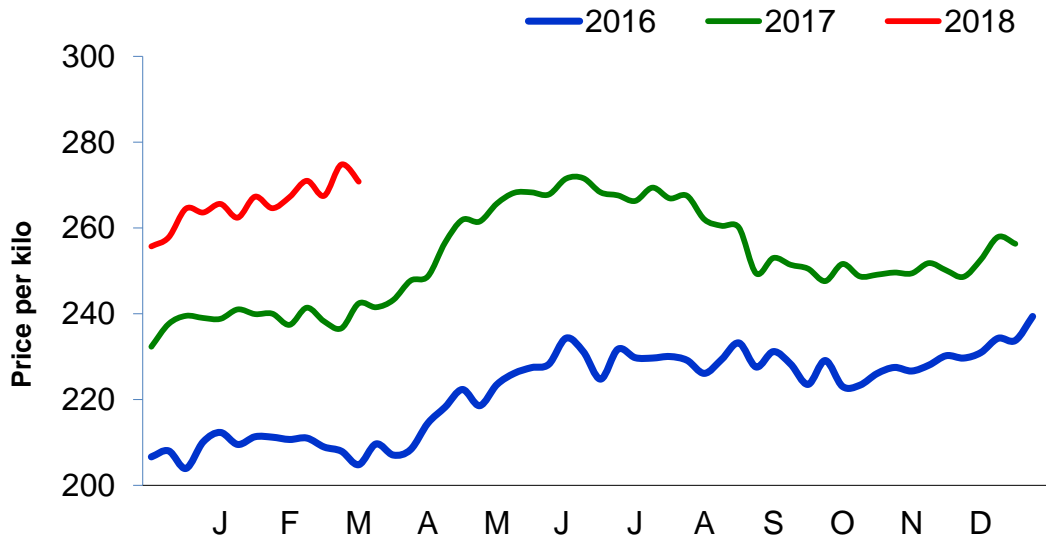
Contents.....	2
Cattle Prices	3
Average NI Clean Cattle Price	3
Average NI Cow Price.....	3
Cattle Slaughtering.....	4
NI Clean Cattle Slaughtering – Cumulative	4
NI Weekly Clean Cattle Slaughtering.....	4
NI Weekly Cow Slaughtering	5
Sheep Prices.....	6
Average NI Lamb / Hogget Price	6
Sheep Slaughtering.....	7
Cumulative Lamb & Hogget Slaughtering	7
Total Weekly Lamb & Hogget Slaughtering	7
Total Weekly Ewe and Ram Slaughtering.....	7
Total Carcase Weight Produced for the Food Chain.....	8
Change in Throughput / Production	9
Supply and Price.....	10
NI Lamb/Hogget Kill vs. Average Lamb / Hogget Price	10
NI Clean Cattle Kill vs. Average Clean Cattle Price.....	10
British Isles Price Comparisons	11
UK Average Cow Prices	11
Weekly UK Cow Prices	11
British Isles R3 Steer Price	12
British Isles R4 Steer Price	12
British Isles Average R3 and R4 Steer price	13
British Isles R3 Heifer Price	14
British Isles R4 Heifer Price	14
British Isles Average R3 and R4 Heifer price.....	15
Exchange Rate £ / Euro	16
Imports.....	17
Monthly Live Imports of Cattle into NI for Direct Slaughter	17
Monthly Live Imports of Sheep into NI for Direct Slaughter	17
Exports	18
Monthly Live Exports of Cattle from NI into RoI and GB.....	18
Monthly live Exports of Sheep from NI into RoI and GB	18

Cattle Prices

Average NI Clean Cattle Price

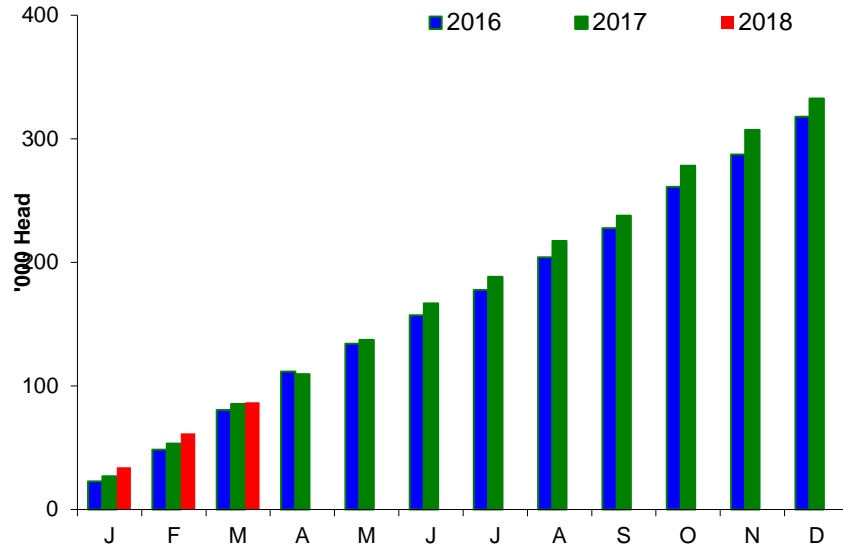


Average NI Cow Price

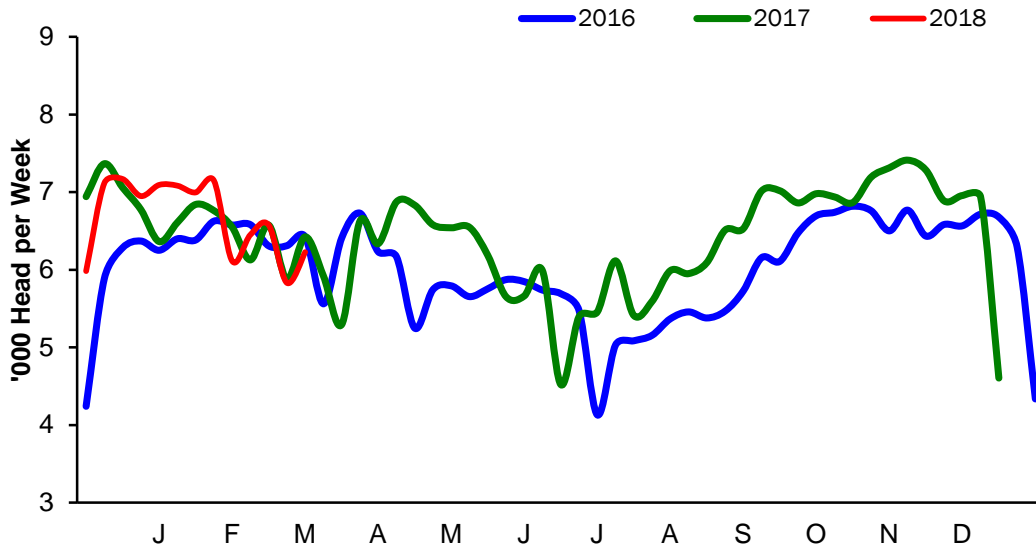


Cattle Slaughtering

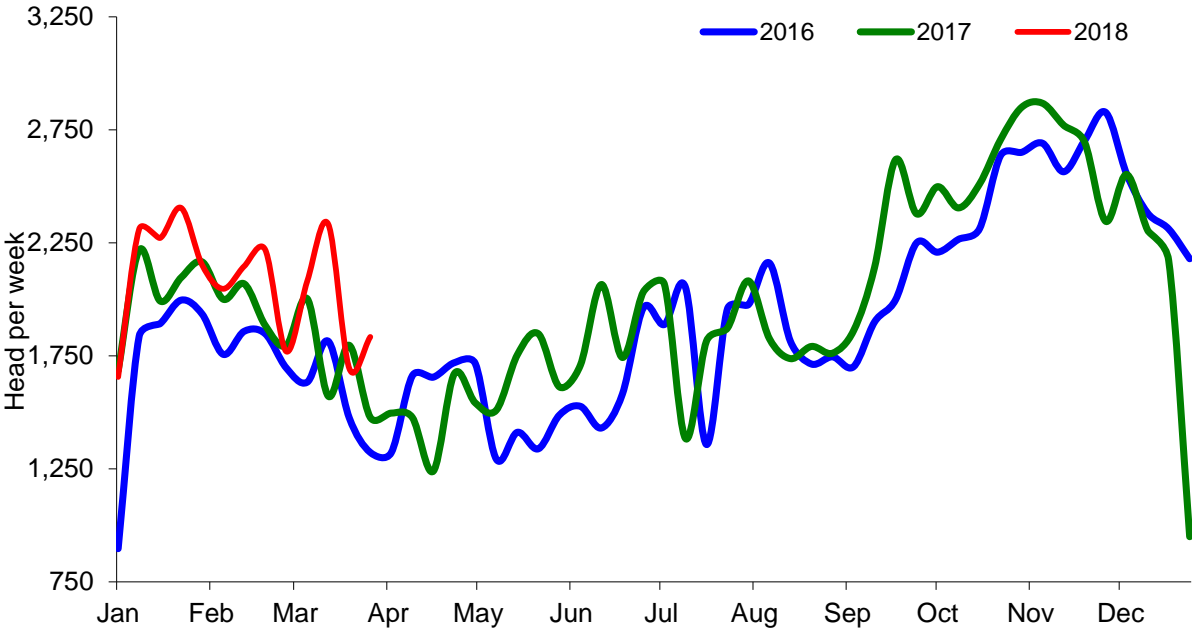
NI Clean Cattle Slaughtering – Cumulative



NI Weekly Clean Cattle Slaughtering

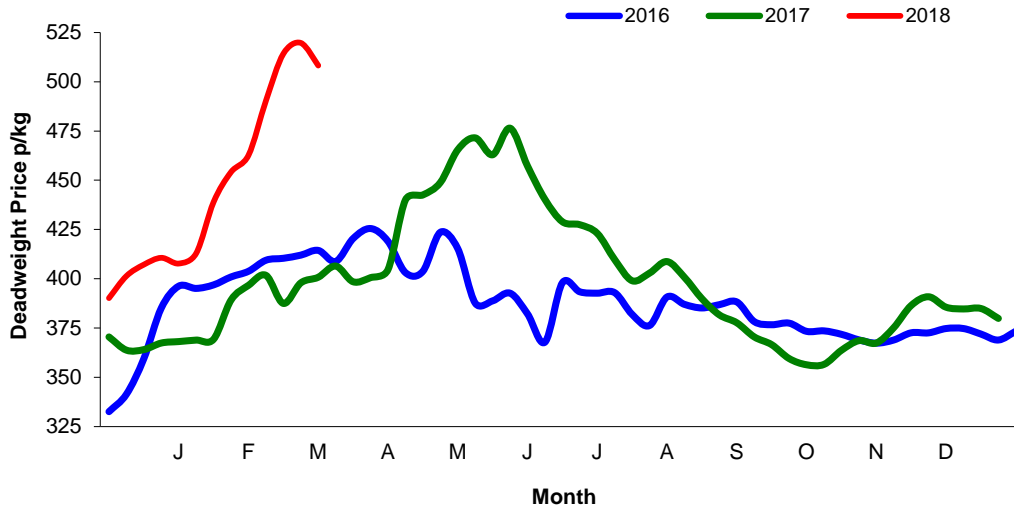


NI Weekly Cow Slaughtering



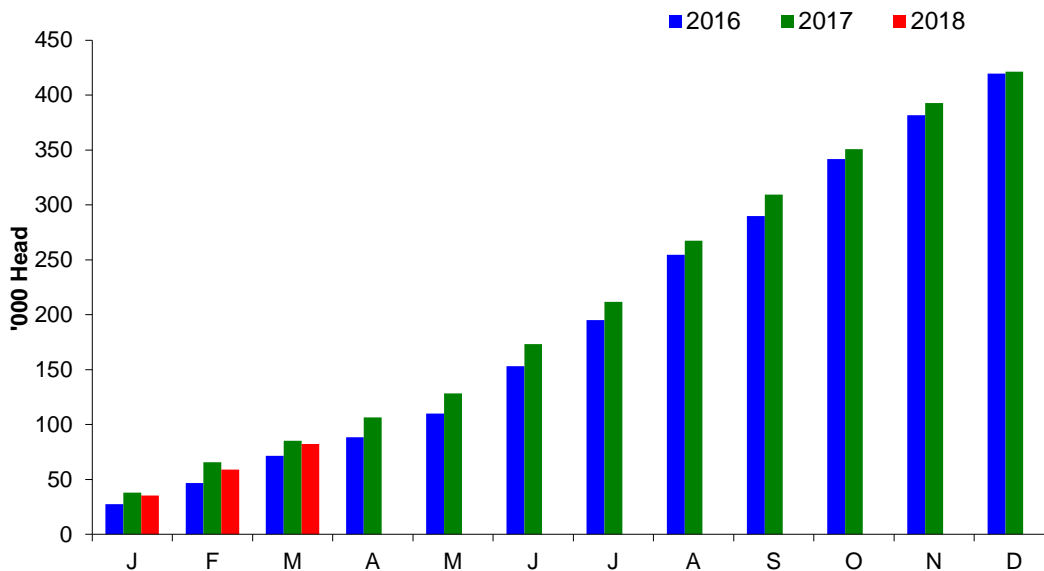
Sheep Prices

Average Deadweight NI Hogget / Lamb Price

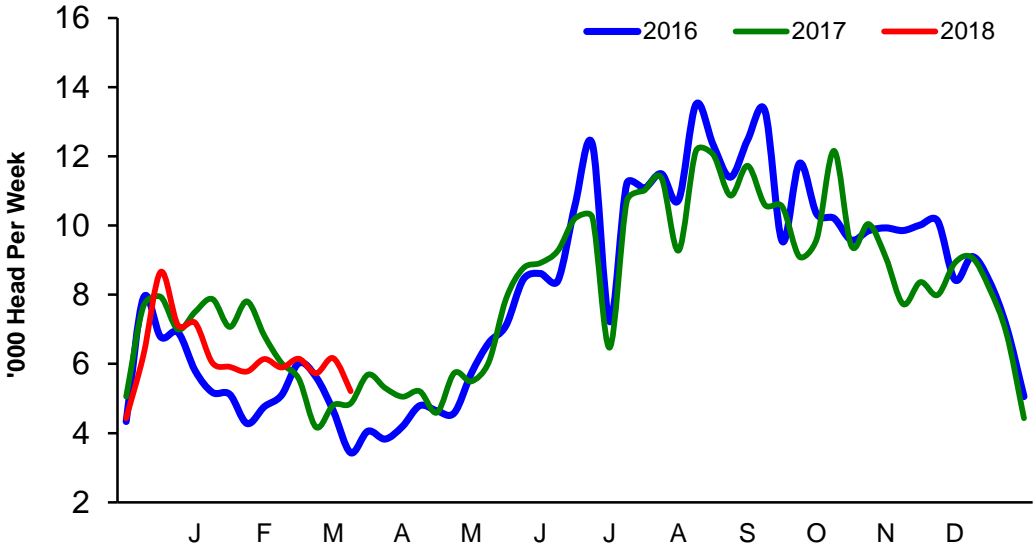


Sheep Slaughterings

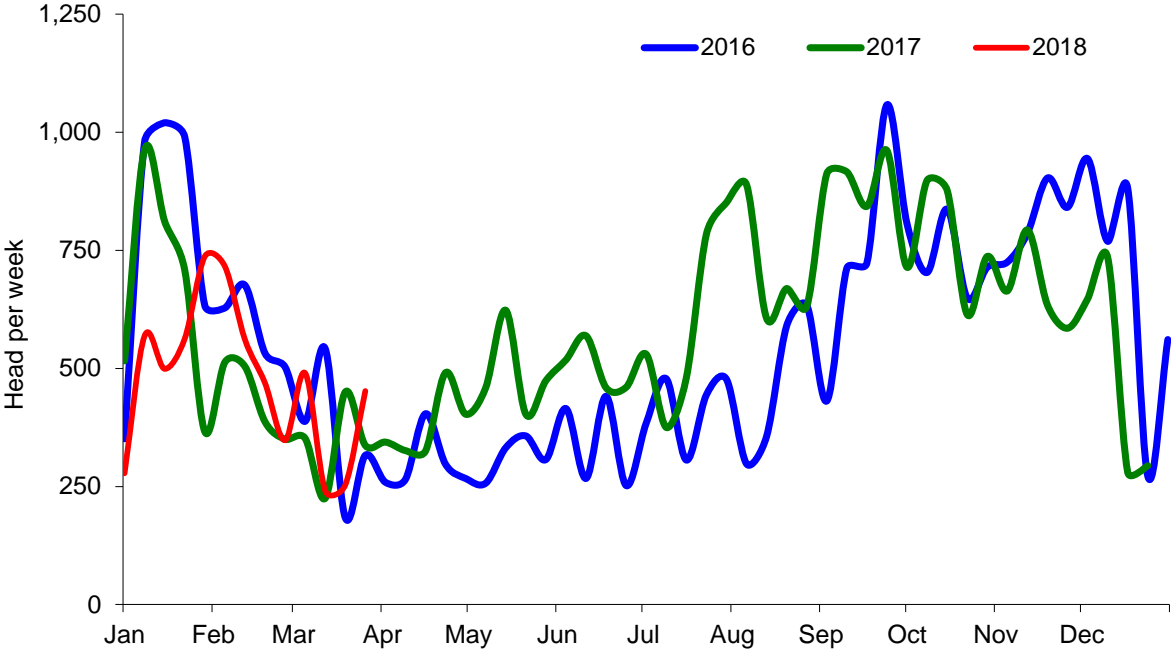
Cumulative Lamb & Hogget Slaughterings



Total Weekly Lamb & Hogget Slaughtering



Total Weekly Ewe and Ram Slaughtering



Market Information March 2018
Page 8

NI CATTLE AND SHEEP SLAUGHTERINGS FOR THE FOODCHAIN						
	March			Year to Date		
	(4 weeks ended 31/03/18)			(13 weeks ended 31/03/18)		
	Mar-17	Mar-18	% Change	2017	2018	Change
CATTLE						
Steers	13,172	12,033	-9%	43,731	42,350	-3%
Heifers	9,790	10,196	+4%	33,941	35,609	+5%
Young Bulls / Calves	2,167	2,857	+32%	7,758	8,779	+13%
Total Prime Cattle	25,129	25,086	-0%	85,430	86,738	+2%
Calves	425	449	+6%	1,727	1,570	-9%
Cows	6,850	7,943	+16%	24,760	26,924	+9%
Mature Bulls	219	259	+18%	835	875	+5%
Total Cattle	32,623	33,737	+3%	112,752	116,107	+3%
SHEEP						
Lambs & Hoggets	19,399	23,253	+20%	85,103	82,231	-3%
Ewes & Rams	1,364	1,436	+5%	6,482	6,176	-5%
Total Sheep	20,763	24,689	+19%	91,585	88,407	-3%

The above figures are provisional; any amendments will be incorporated in the cumulative data (source DAERA).

NI BEEF AND SHEEPMEAT PRODUCTION - FOODCHAIN						
	March			Year to Date		
	(4 weeks ended 31/03/18)			(13 weeks ended 31/03/18)		
	Mar-17	Mar-18	% Change	2017	2018	Change
BEEF						
Steers	4,582	4,212	-8%	15,280	14,929	-2%
Heifers	3,059	3,205	+5%	10,671	11,290	+6%
Young Bulls	705	934	+33%	2,483	2,869	+16%
Total Prime Beef	8,345	8,351	+0%	28,434	29,088	+2%
Calves	83	90	+8%	340	301	-11%
Cows	2,025	2,374	+17%	7,412	8,072	+9%
Mature Bulls	106	109	+3%	391	378	-3%
Total Beef	10,559	10,924	+3%	36,577	37,839	+3%
SHEEPMEAT						
Lambs & Hoggets	449	510	+14%	1,924	1,789	-7%
Ewes & Rams	39	40	+3%	181	165	-8%
Total Sheepmeat	488	550	+13%	2,104	1,954	-7%

The above figures are provisional; any amendments will be incorporated in the cumulative data (source DAERA).

Market Information March 2018
Page 9

Total Carcase Weight Produced for the Food Chain
Year-to-Date (tonnes – t.)

Month	Prime Cattle		Cows & Bulls		Lambs/Hoggets		Ewes & Rams	
	2017	2018	2017	2018	2017	2018	2017	2018
January	11,268	11,543	3,050	3,250	852	764	92	73
February	8,821	9,194	2,337	2,448	623	515	50	53
March	8,345	8,351	2,025	2,374	449	510	39	40
April								
May								
June								
July								
August								
September								
October								
November								
December								
Total	28,434	29,088	7,412	8,072	1,924	1,789	181	165
Change (t.)	655		660		-135		-15	
% Change	2.30%		8.90%		-7.00%		-8.46%	

**excludes calves*

Change in Throughput / Production

Last 4 weeks 2017/2018

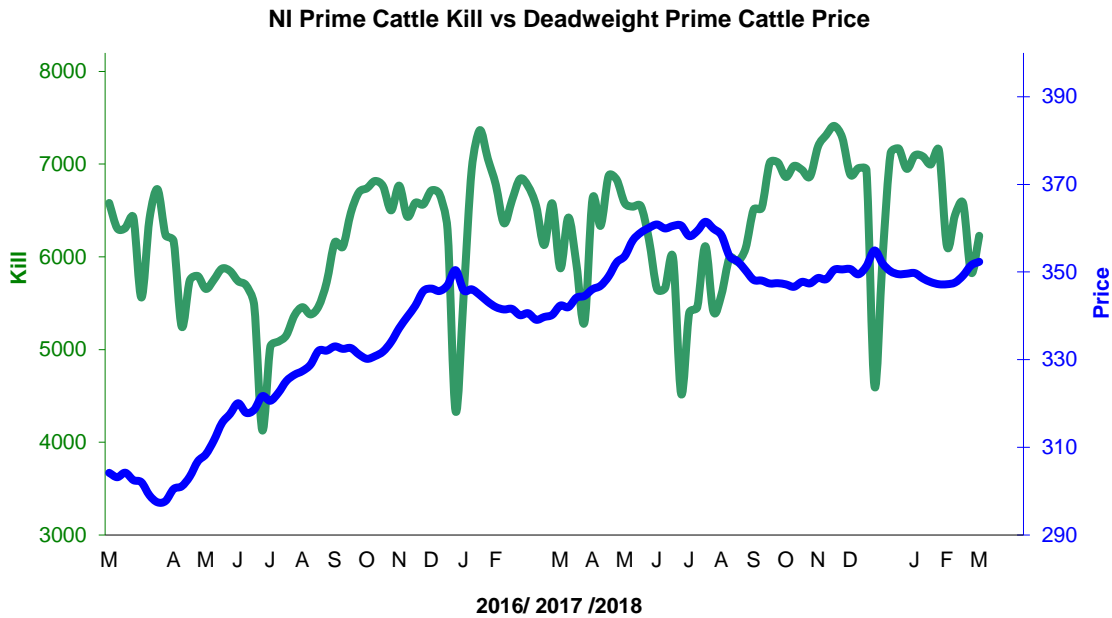
Change in Throughput / Production 2017/2018

March

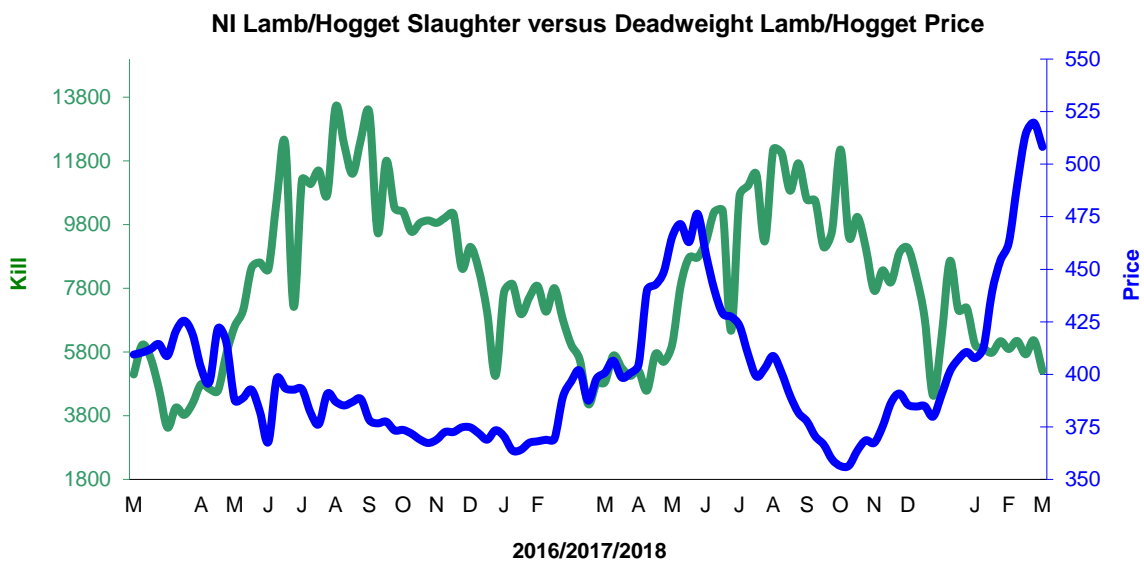
2017/2018	Number	Tonnage	ACW Kg
Prime	-0.2%	0.1%	0.60
Cows	16.0%	17.3%	3.27
Total	3.4%	3.5%	0.14
Lamb	19.9%	13.7%	-1.19
Ewes and Rams	5.3%	3.3%	-0.33
Total Sheep	18.9%	12.9%	-1.18

Supply and Price

NI Clean Cattle Kill vs. Average Clean Cattle Price



NI Lamb/Hogget Kill vs. Average Lamb / Hogget Price

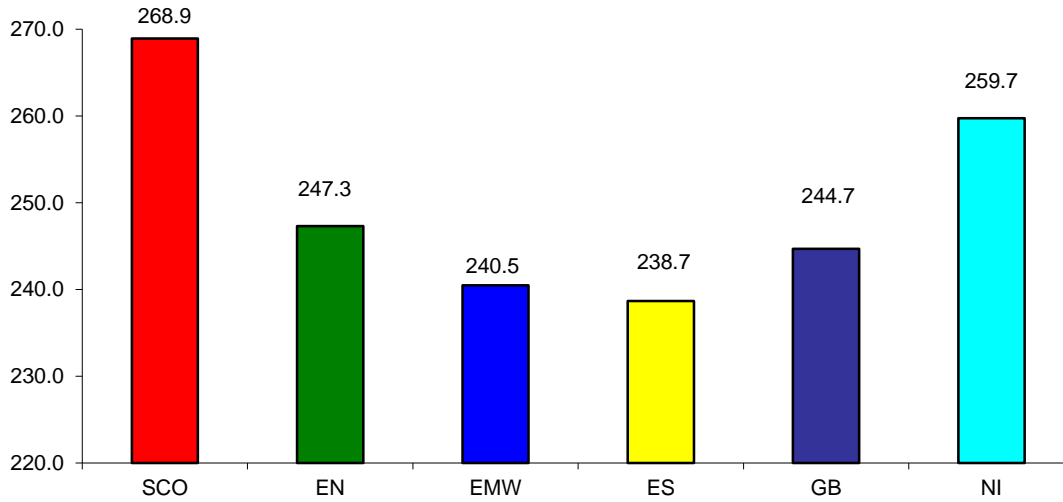


Green	Supply (Kill)
Blue	Price

BRITISH ISLES COMPARISONS

UK Average Cow Prices

52 Weeks to 30 March 2018

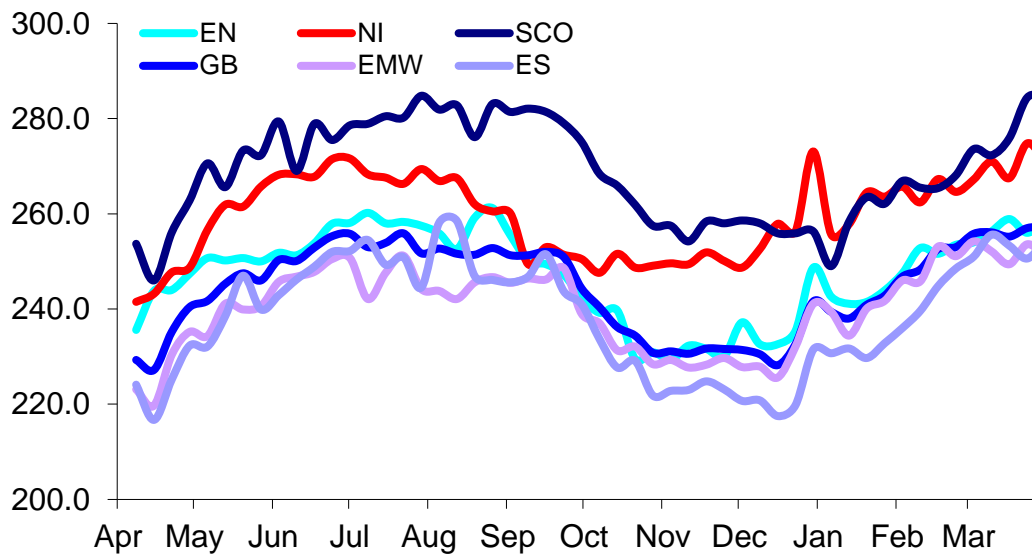


SCO	Scotland
EN	England North
EMW	England Midlands and Wales
ES	England South
NI	Northern Ireland
GB	Great Britain

Prices relate to UK Dressing Specification

Weekly UK Cow Prices

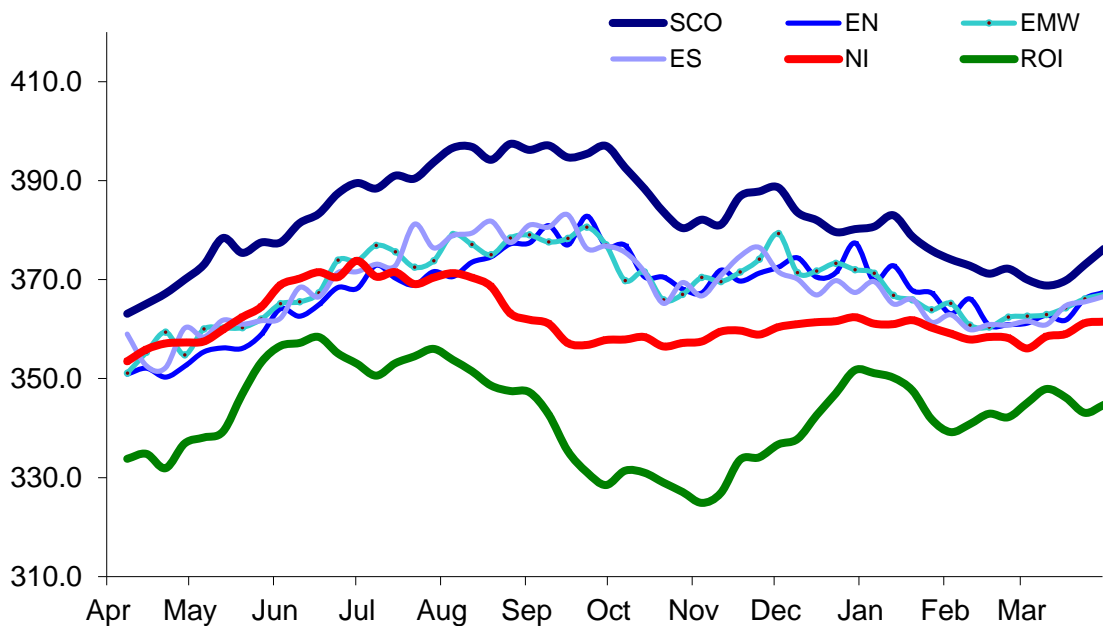
52 Weeks to 30 March 2018



Prices relate to UK Dressing Specification

British Isles R3 Steer Price

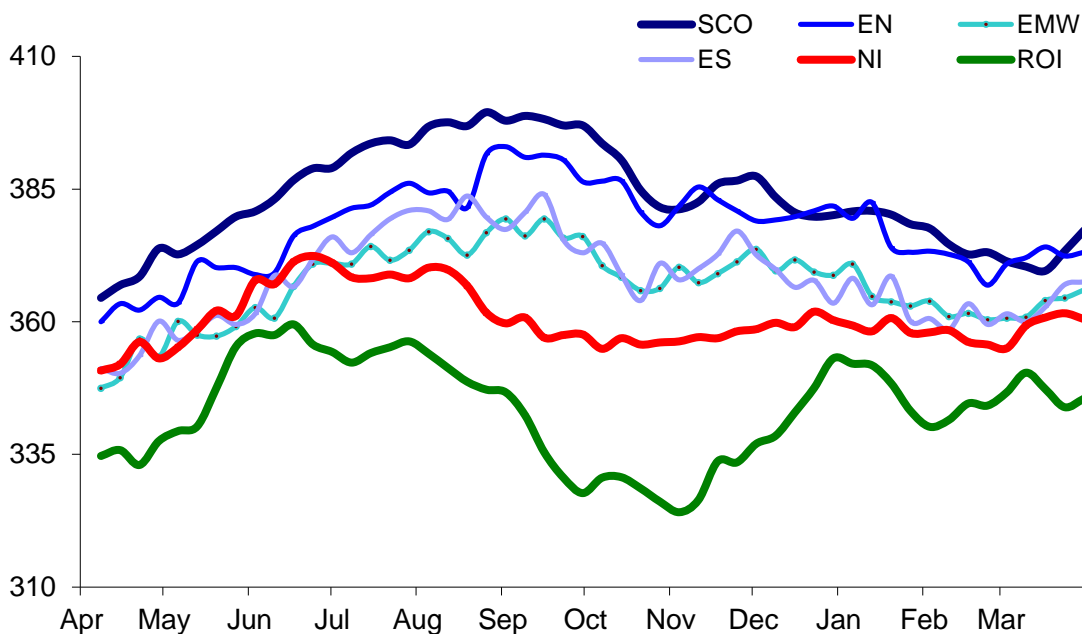
52 Weeks to 30 March 2018



Prices relate to UK Dressing Specification

British Isles R4 Steer Price

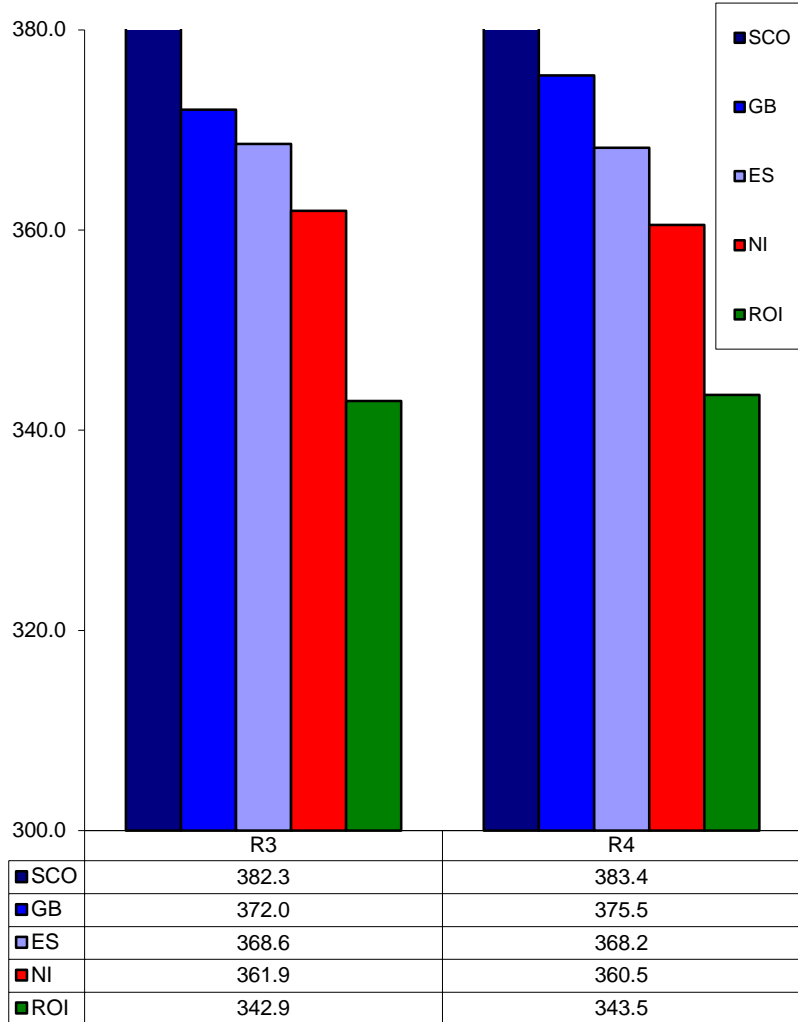
52 Weeks to 30 March 2018



Prices relate to UK Dressing Specification

British Isles Average R3 and R4 Steer price

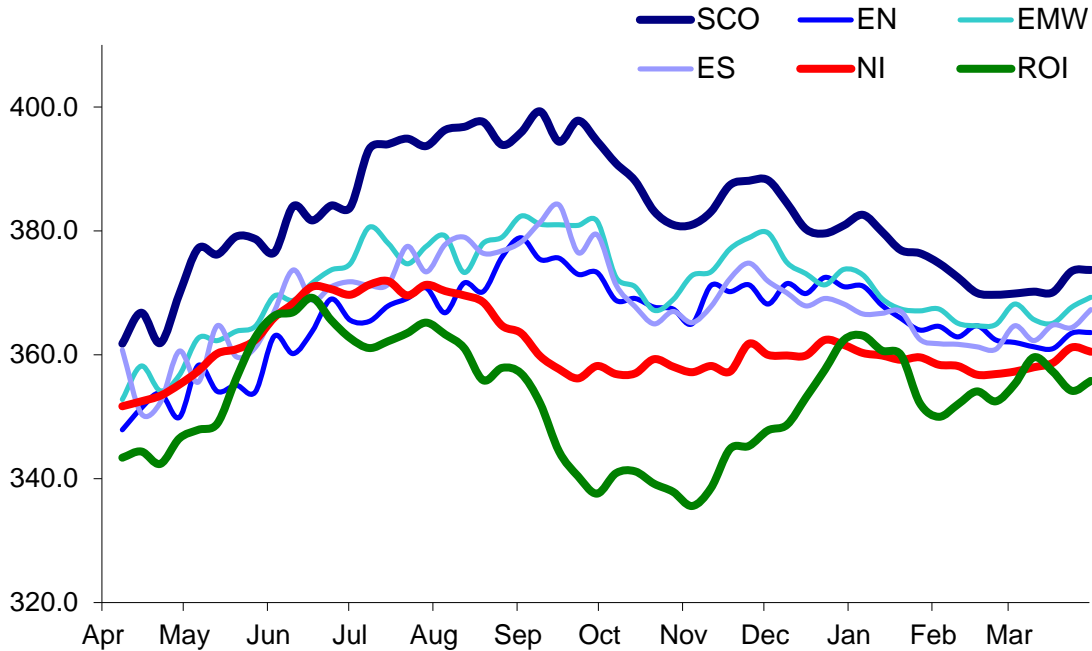
52 Weeks to 30 March 2018



Prices relate to UK Dressing Specification

British Isles R3 Heifer Price

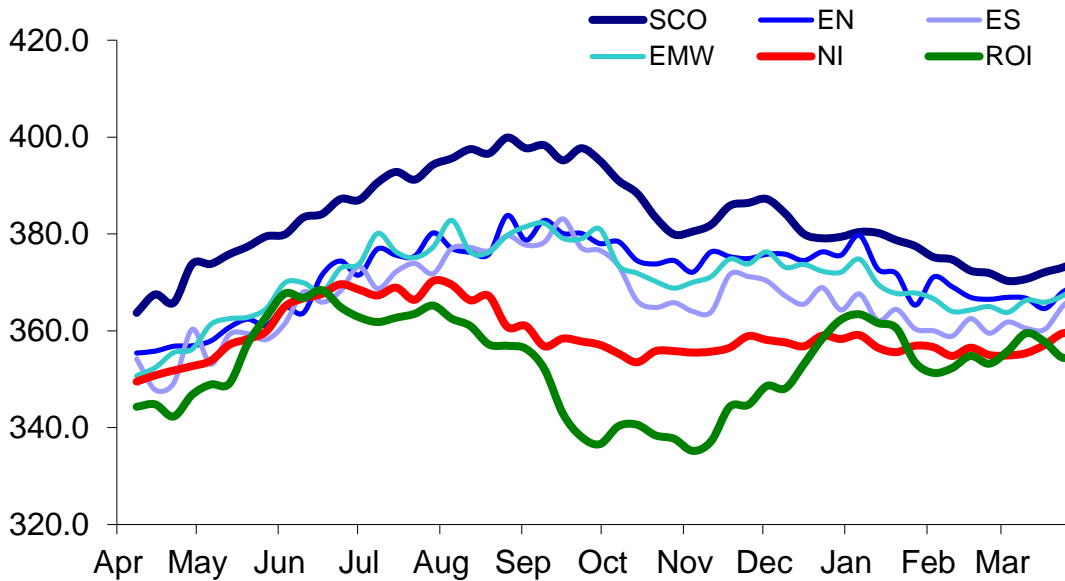
52 Weeks to 30 March 2018



Prices relate to UK Dressing Specification

British Isles R4 Heifer Price

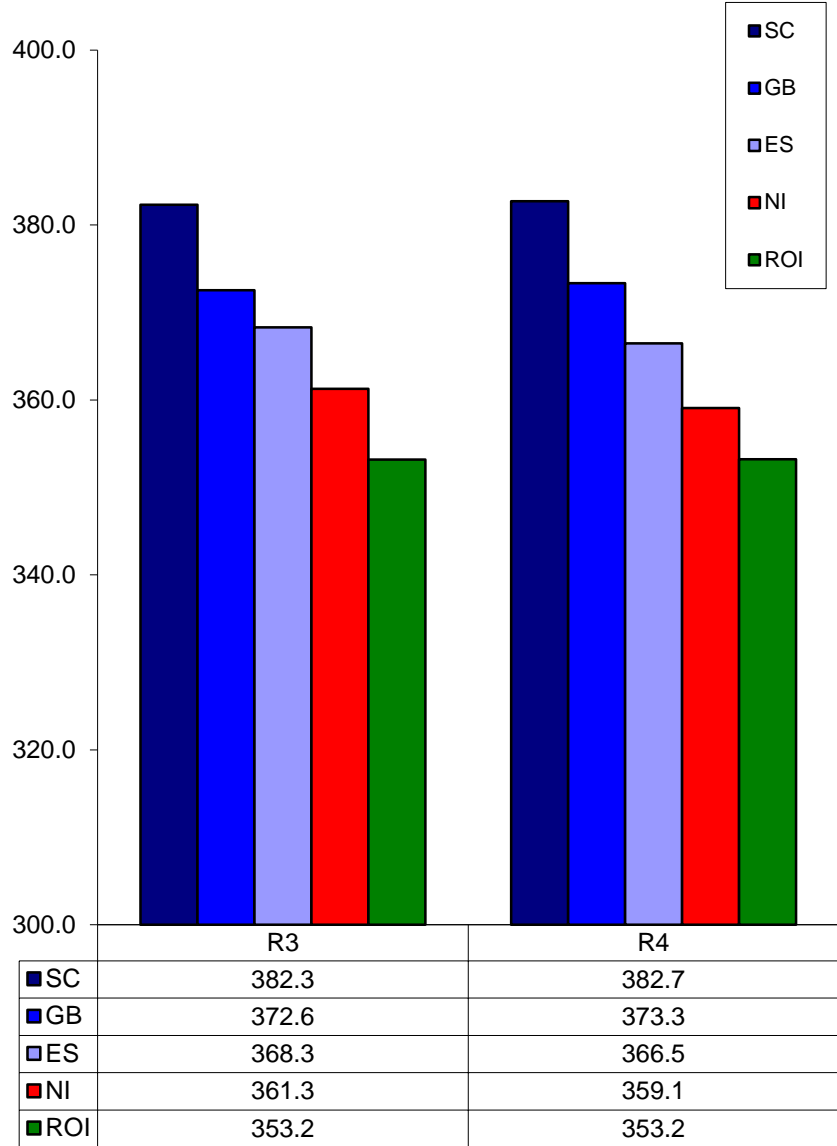
52 Weeks to 30 March 2018



Prices relate to UK Dressing Specification

British Isles Average R3 and R4 Heifer price

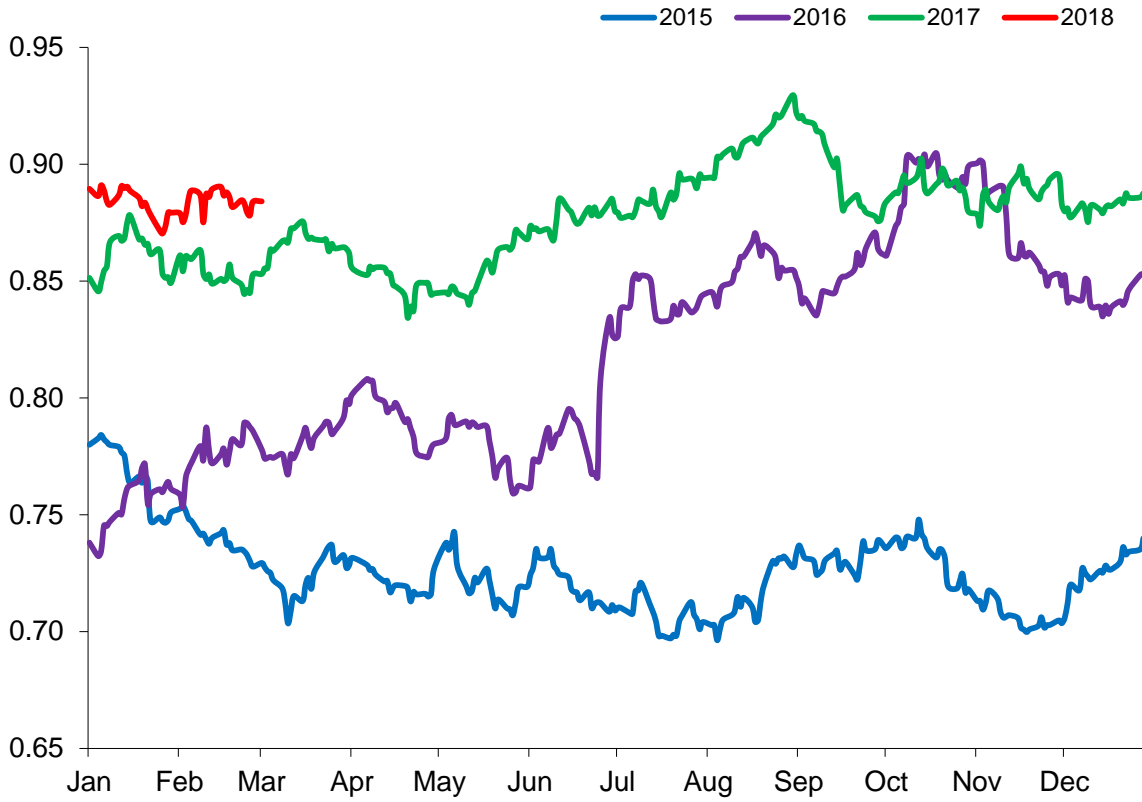
52 Weeks to 30 March 2018



Prices relate to UK Dressing Specification

Exchange Rate £ / Euro

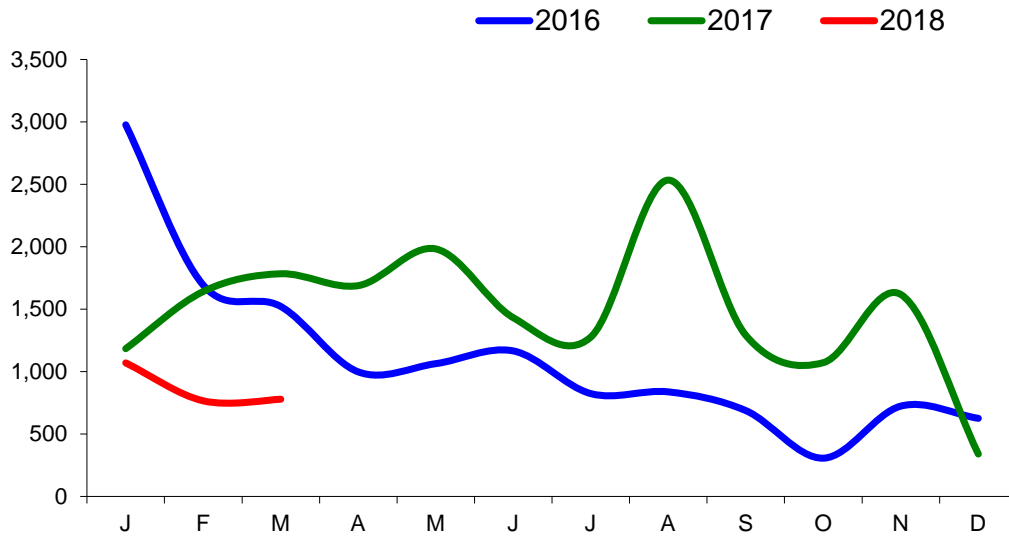
01 January 2015 –31 March 2018



Imports

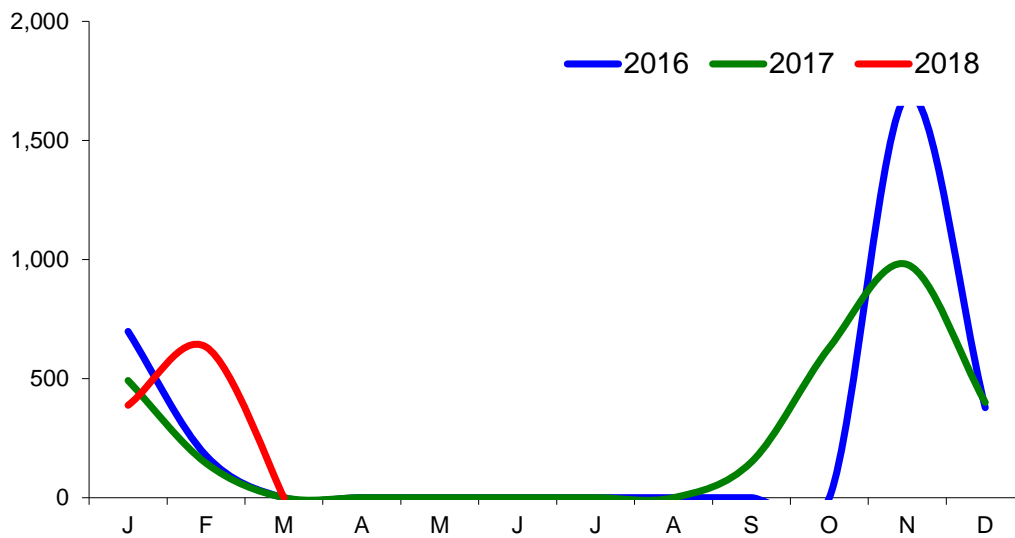
Monthly Live Imports of Cattle into NI for Direct Slaughter

From ROI and GB Combined



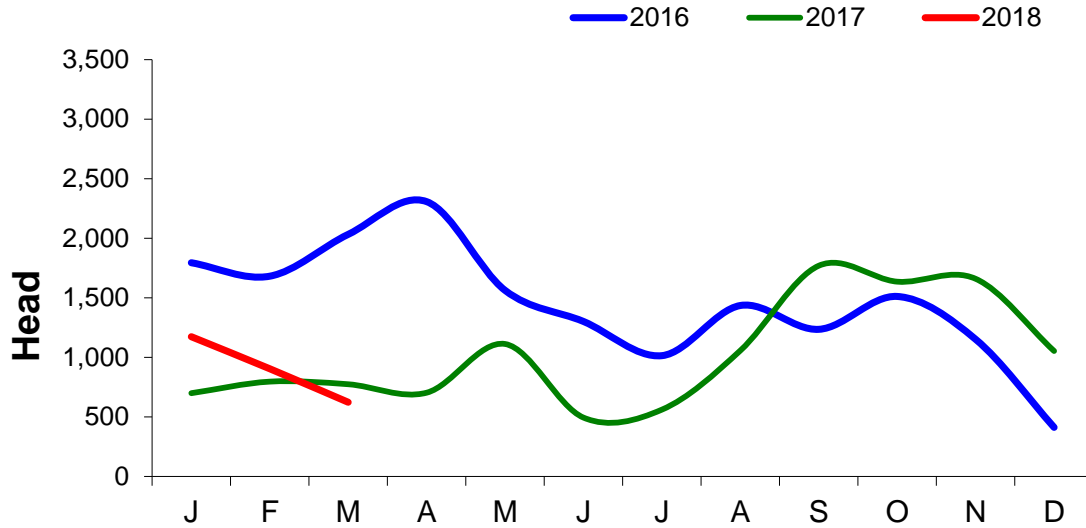
Monthly Live Imports of Sheep into NI for Direct Slaughter

From ROI and GB Combined



Exports

Monthly Live Exports of Cattle from NI into ROI and GB



Monthly Live Exports of Sheep from NI into ROI and GB

