



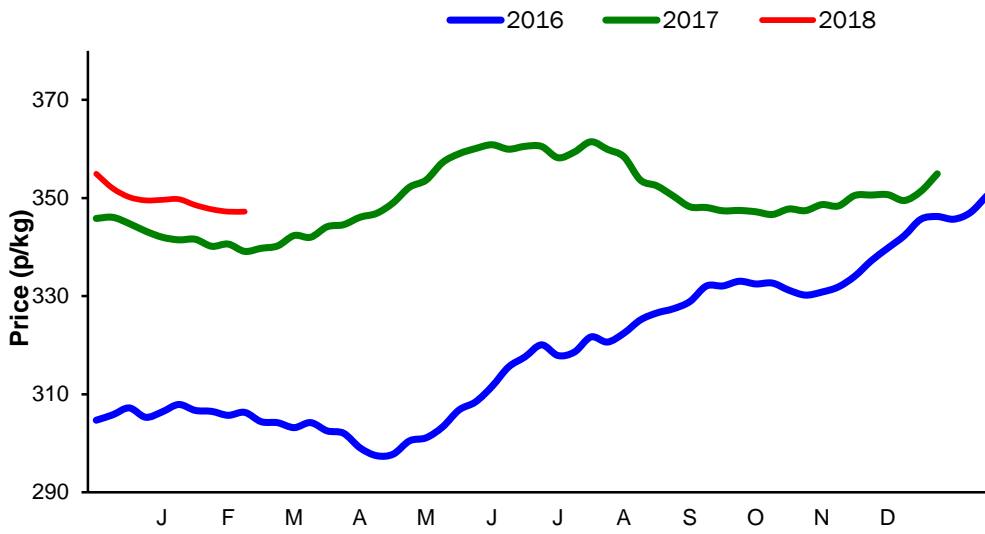
**Monthly Economic Review
February 2018**

Contents

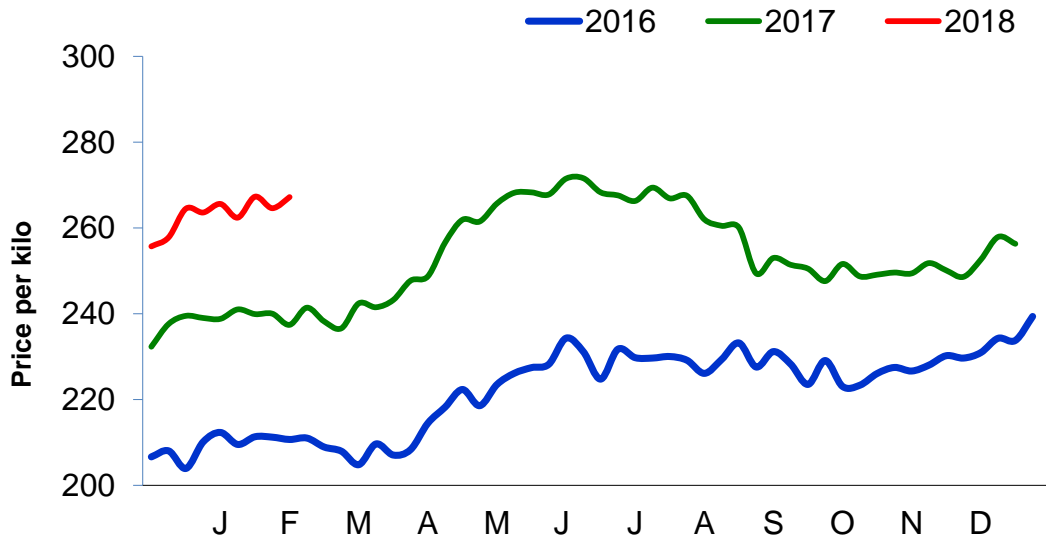
Contents.....	2
Cattle Prices	3
Average NI Clean Cattle Price	3
Average NI Cow Price.....	3
Cattle Slaughtering.....	4
NI Clean Cattle Slaughtering – Cumulative	4
NI Weekly Clean Cattle Slaughtering.....	4
NI Weekly Cow Slaughtering	5
Sheep Prices.....	6
Average NI Lamb / Hogget Price	6
Sheep Slaughtering.....	7
Cumulative Lamb & Hogget Slaughtering	7
Total Weekly Lamb & Hogget Slaughtering	7
Total Weekly Ewe and Ram Slaughtering.....	7
Total Carcase Weight Produced for the Food Chain.....	8
Change in Throughput / Production	9
Supply and Price.....	10
NI Lamb/Hogget Kill vs. Average Lamb / Hogget Price	10
NI Clean Cattle Kill vs. Average Clean Cattle Price.....	10
British Isles Price Comparisons	11
UK Average Cow Prices	11
Weekly UK Cow Prices	11
British Isles R3 Steer Price	12
British Isles R4 Steer Price	12
British Isles Average R3 and R4 Steer price	13
British Isles R3 Heifer Price	14
British Isles R4 Heifer Price	14
British Isles Average R3 and R4 Heifer price.....	15
Exchange Rate £ / Euro	16
Imports.....	17
Monthly Live Imports of Cattle into NI for Direct Slaughter	17
Monthly Live Imports of Sheep into NI for Direct Slaughter	17
Exports	18
Monthly Live Exports of Cattle from NI into RoI and GB.....	18
Monthly live Exports of Sheep from NI into RoI and GB	18

Cattle Prices

Average NI Clean Cattle Price

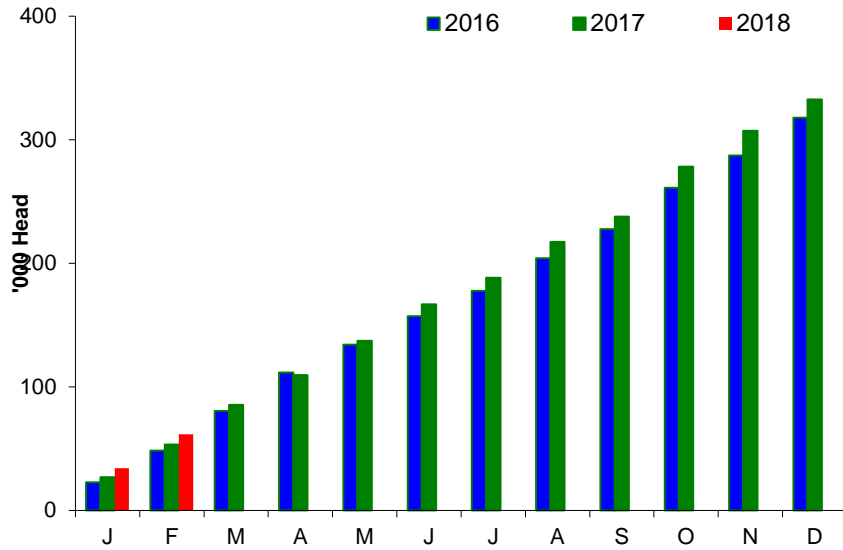


Average NI Cow Price

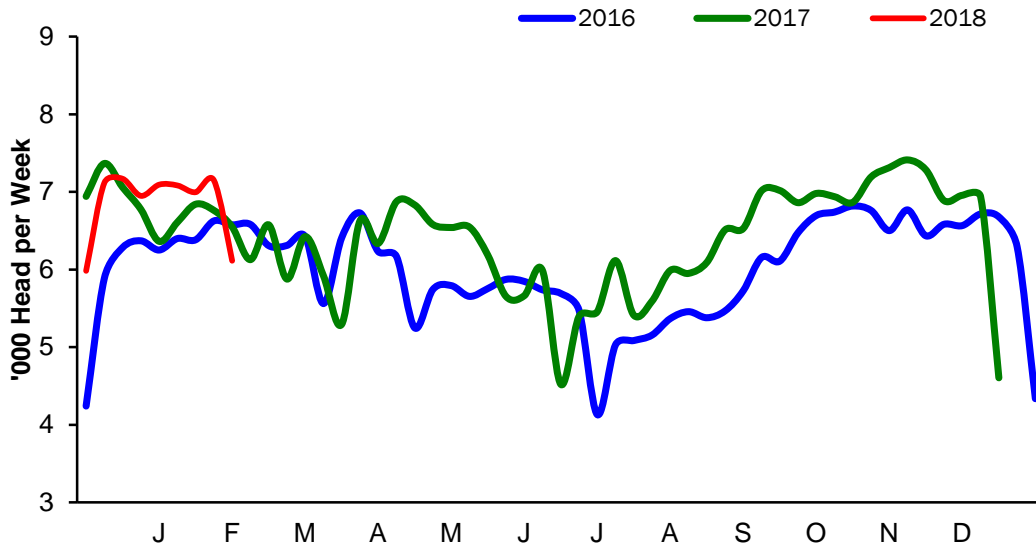


Cattle Slaughtering

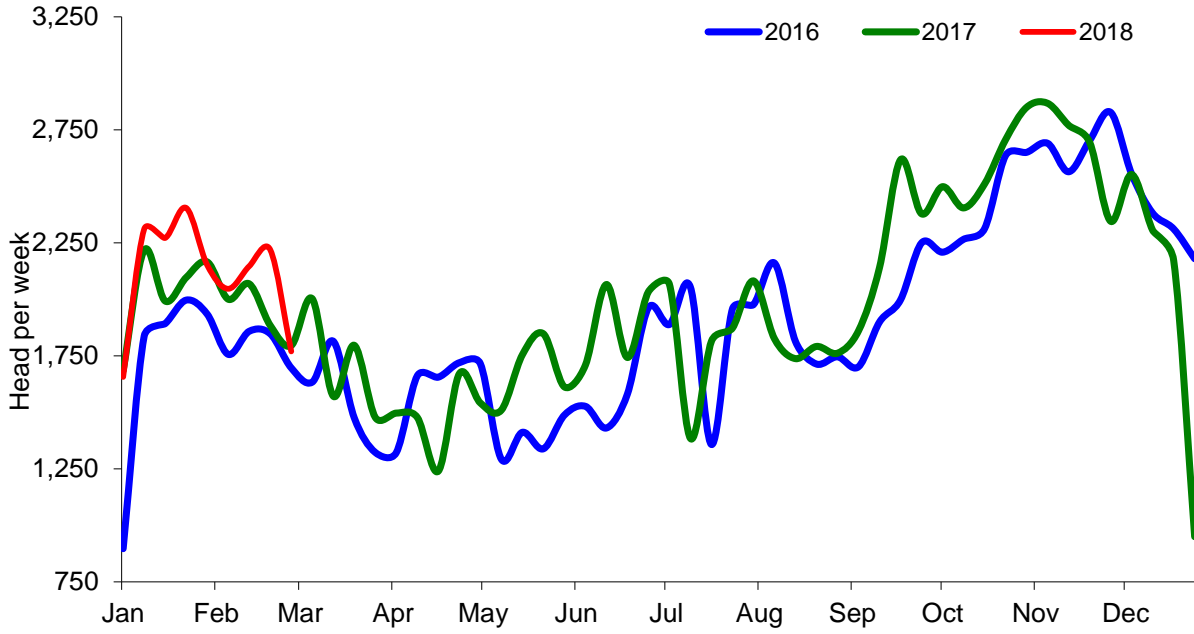
NI Clean Cattle Slaughtering – Cumulative



NI Weekly Clean Cattle Slaughtering

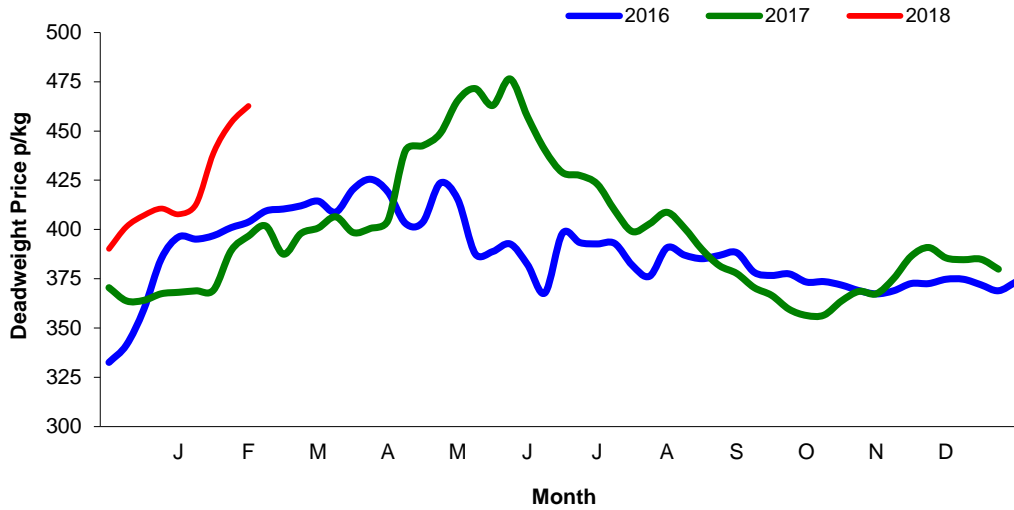


NI Weekly Cow Slaughtering



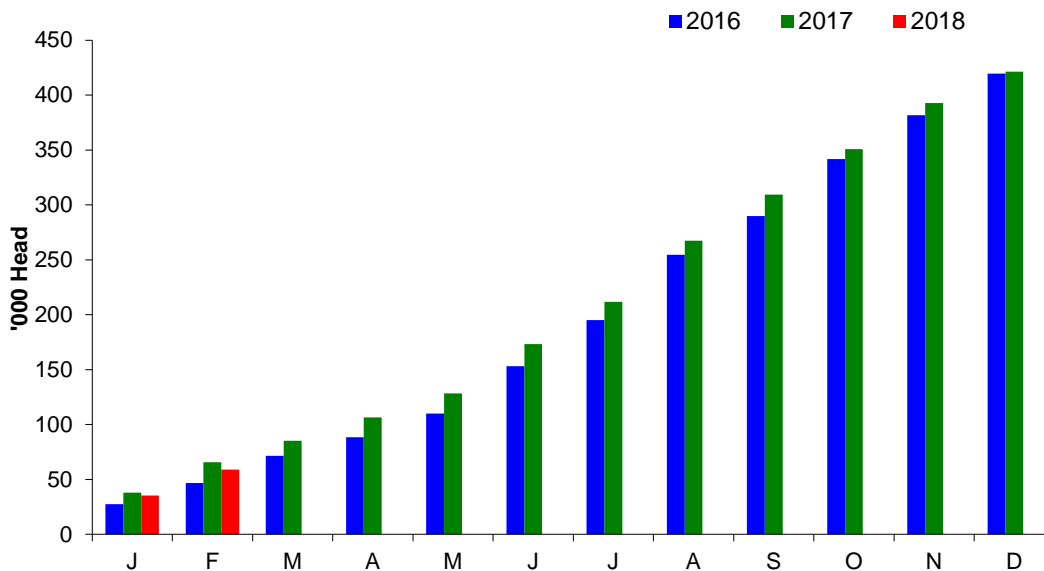
Sheep Prices

Average Deadweight NI Hogget / Lamb Price

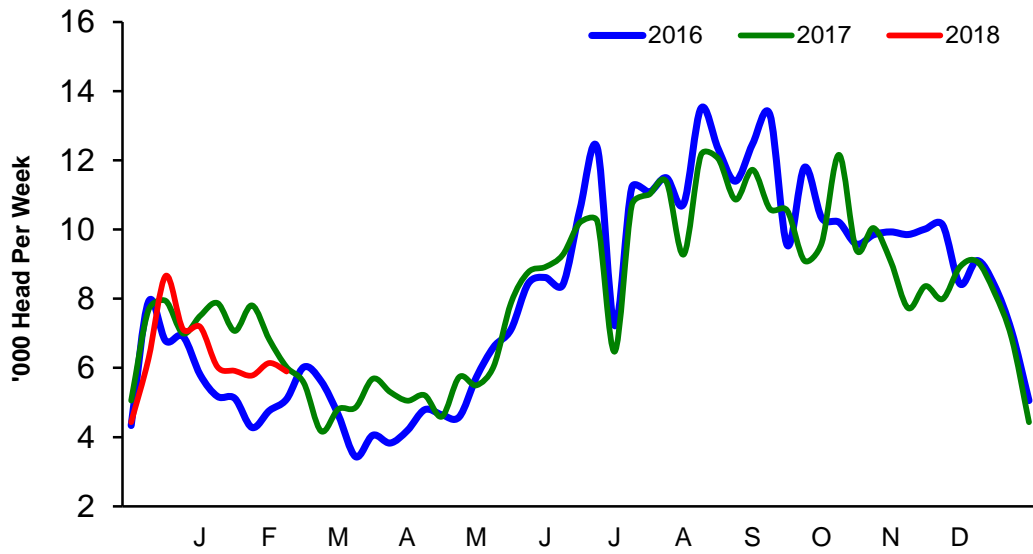


Sheep Slaughterings

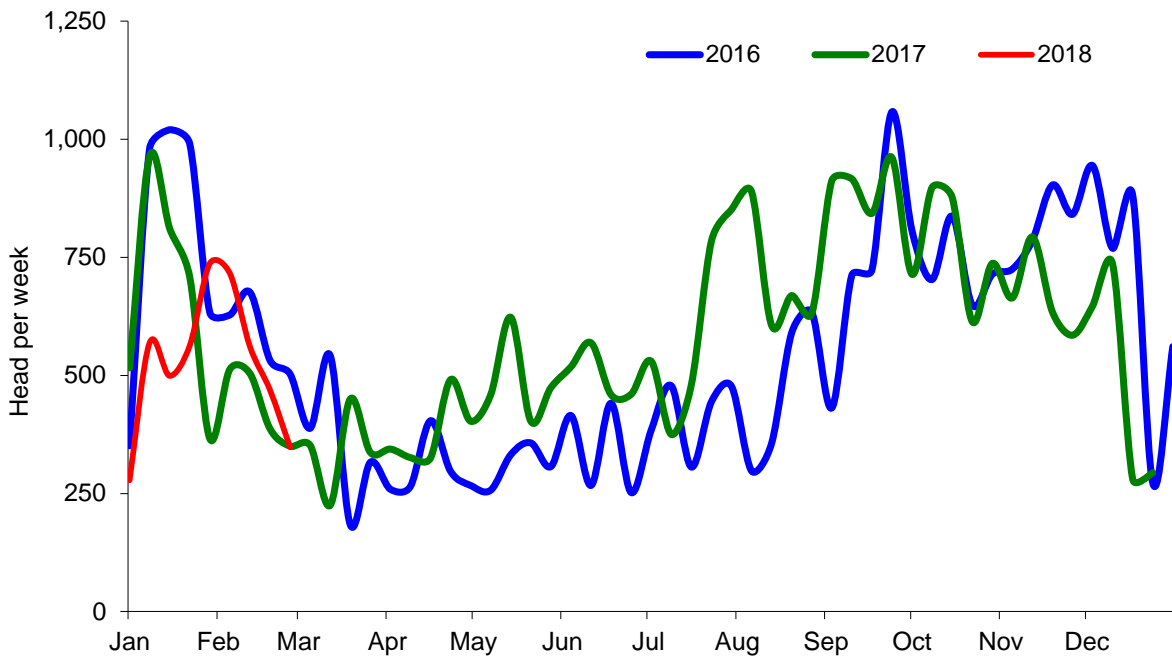
Cumulative Lamb & Hogget Slaughterings



Total Weekly Lamb & Hogget Slaughtering



Total Weekly Ewe and Ram Slaughtering



Market Information February 2018
Page 8

NI CATTLE AND SHEEP SLAUGHTERINGS FOR THE FOODCHAIN						
	February			Year to Date		
	(4 weeks ended 03/03/18)			(9 weeks ended 03/03/18)		
	Feb-17	Feb-18	% Change	2016	2017	Change
CATTLE						
Steers	13,647	13,443	-1%	30,559	30,317	-1%
Heifers	10,497	11,134	+6%	24,151	25,413	+5%
Young Bulls / Calves	2,431	2,764	+14%	5,591	5,922	+6%
Total Prime Cattle	26,575	27,341	+3%	60,301	61,652	+2%
Calves	531	559	+5%	1,302	1,121	-14%
Cows	7,751	8,184	+6%	17,910	18,981	+6%
Mature Bulls	270	267	-1%	616	616	+0%
Total Cattle	35,127	36,351	+3%	80,129	82,370	+3%
SHEEP						
Lambs & Hoggets	27,717	23,732	-14%	65,704	58,978	-10%
Ewes & Rams	1,754	2,094	+19%	5,118	4,740	-7%
Total Sheep	29,471	25,826	-12%	70,822	63,718	-10%
The above figures are provisional; any amendments will be incorporated in the cumulative data (source DAERA).						

NI BEEF AND SHEEPMEAT PRODUCTION - FOODCHAIN						
	February			Year to Date		
	(4 weeks ended 03/03/18)			(9 weeks ended 03/03/18)		
	Feb-17	Feb-18	% Change	2016	2017	Change
BEEF						
Steers	4,765	4,740	-1%	10,699	10,716	+0%
Heifers	3,285	3,548	+8%	7,612	8,086	+6%
Young Bulls	771	906	+18%	1,778	1,936	+9%
Total Prime Beef	8,821	9,194	+4%	20,089	20,737	+3%
Calves	100	108	+8%	256	211	-18%
Cows	2,337	2,448	+5%	5,387	5,698	+6%
Mature Bulls	128	112	-12%	285	268	-6%
Total Beef	11,386	11,862	+4%	26,017	26,914	+3%
SHEEPMEAT						
Lambs & Hoggets	623	515	-17%	1,475	1,279	-13%
Ewes & Rams	50	53	+6%	142	125	-12%
Total Sheepmeat	673	567	-16%	1,617	1,404	-13%
The above figures are provisional; any amendments will be incorporated in the cumulative data (source DAERA).						

Market Information February 2018
Page 9

Total Carcase Weight Produced for the Food Chain
Year-to-Date (tonnes – t.)

Month	Prime Cattle		Cows & Bulls		Lambs/Hoggets		Ewes & Rams	
	2017	2018	2017	2018	2017	2018	2017	2018
January	11,268	11,543	3,050	3,250	852	764	92	73
February	8,821	9,194	2,337	2,448	623	515	50	53
March								
April								
May								
June								
July								
August								
September								
October								
November								
December								
Total	20,089	20,737	5,387	5,698	1,475	1,279	142	125
Change (t.)	649		311		-196		-17	
% Change	3.23%		5.76%		-13.30%		-11.69%	

**excludes calves*

Change in Throughput / Production

Last 4 weeks 2017/2018

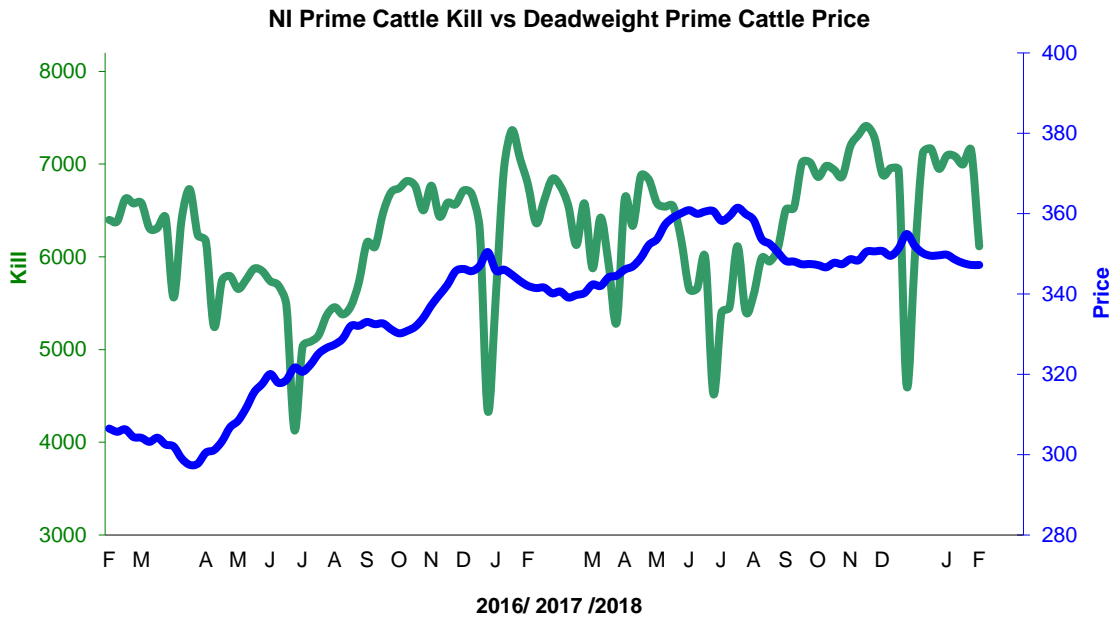
Change in Throughput / Production 2017/2018

February

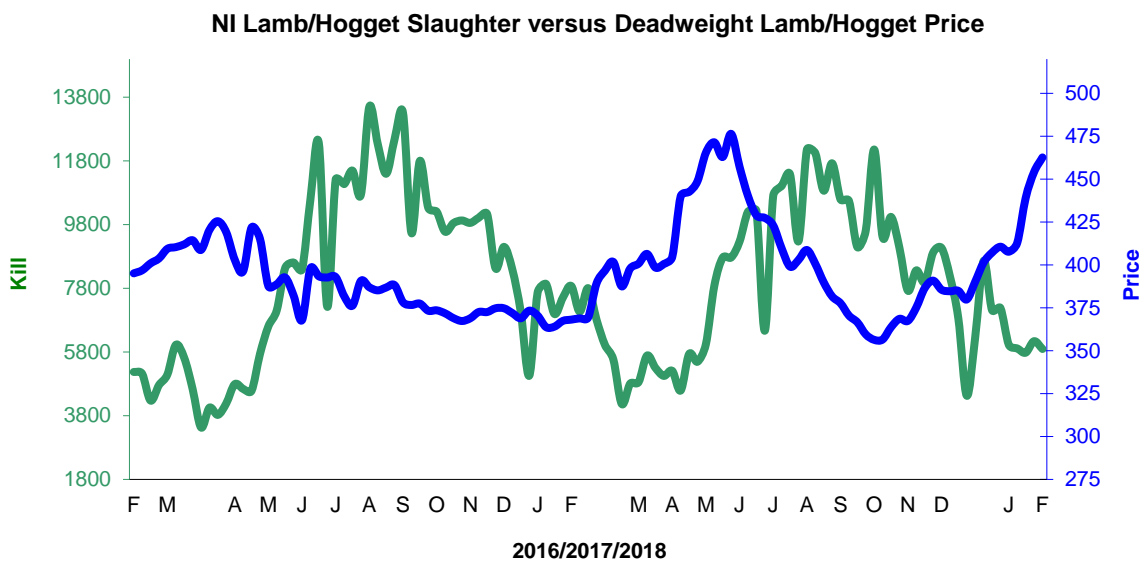
2017/2018	Number	Tonnage	ACW Kg
Prime	2.9%	4.2%	4.10
Cows	5.6%	4.8%	-2.35
Total	3.5%	4.2%	2.31
Lamb	-14.4%	-17.4%	-0.78
Ewes and Rams	19.4%	5.9%	-3.09
Total Sheep	-12.4%	-15.7%	-0.85

Supply and Price

NI Clean Cattle Kill vs. Average Clean Cattle Price



NI Lamb/Hogget Kill vs. Average Lamb / Hogget Price

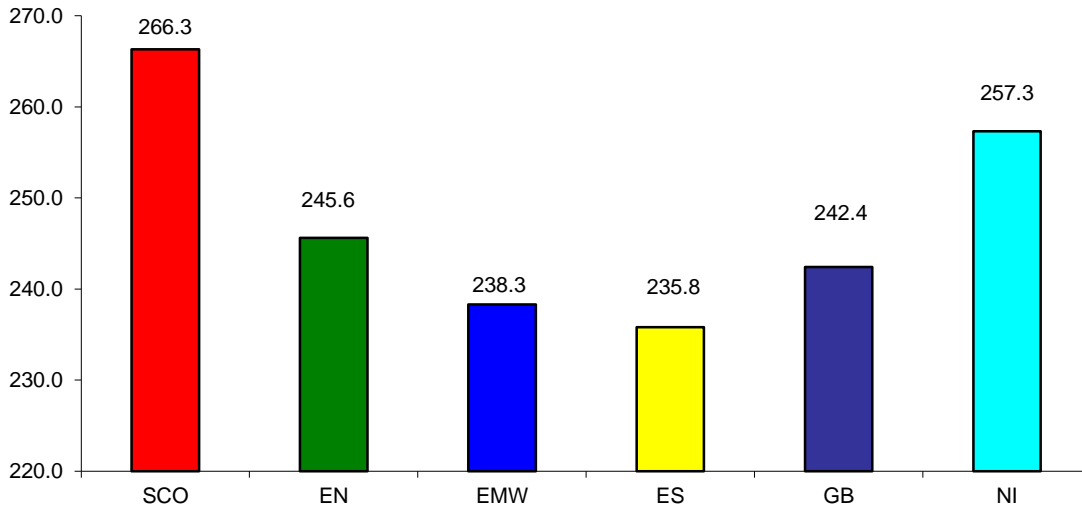


Green	Supply (Kill)
Blue	Price

BRITISH ISLES COMPARISONS

UK Average Cow Prices

52 Weeks to 03 March 2018

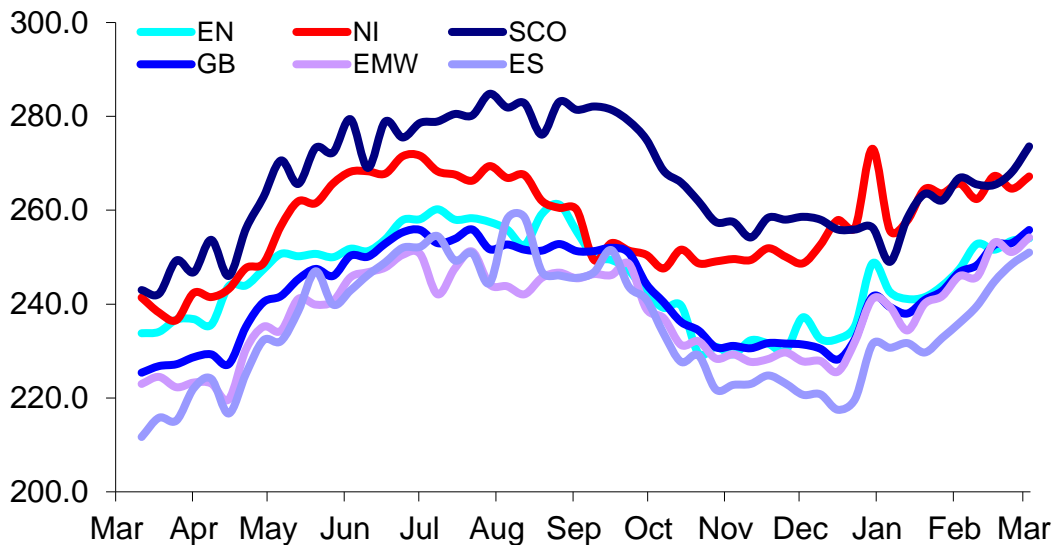


SCO	Scotland
EN	England North
EMW	England Midlands and Wales
ES	England South
NI	Northern Ireland
GB	Great Britain

Prices relate to UK Dressing Specification

Weekly UK Cow Prices

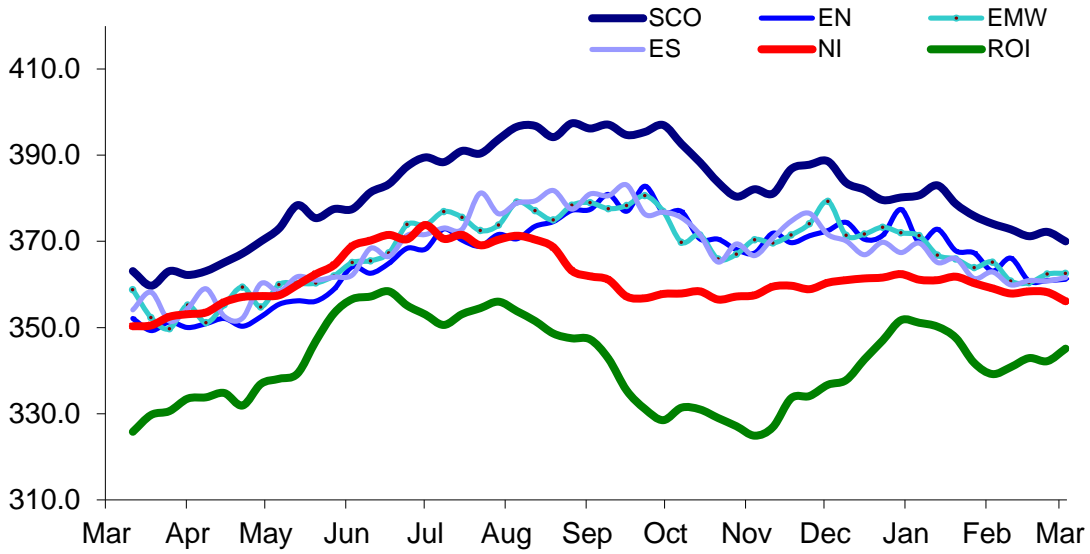
52 Weeks to 03 March 2018



Prices relate to UK Dressing Specification

British Isles R3 Steer Price

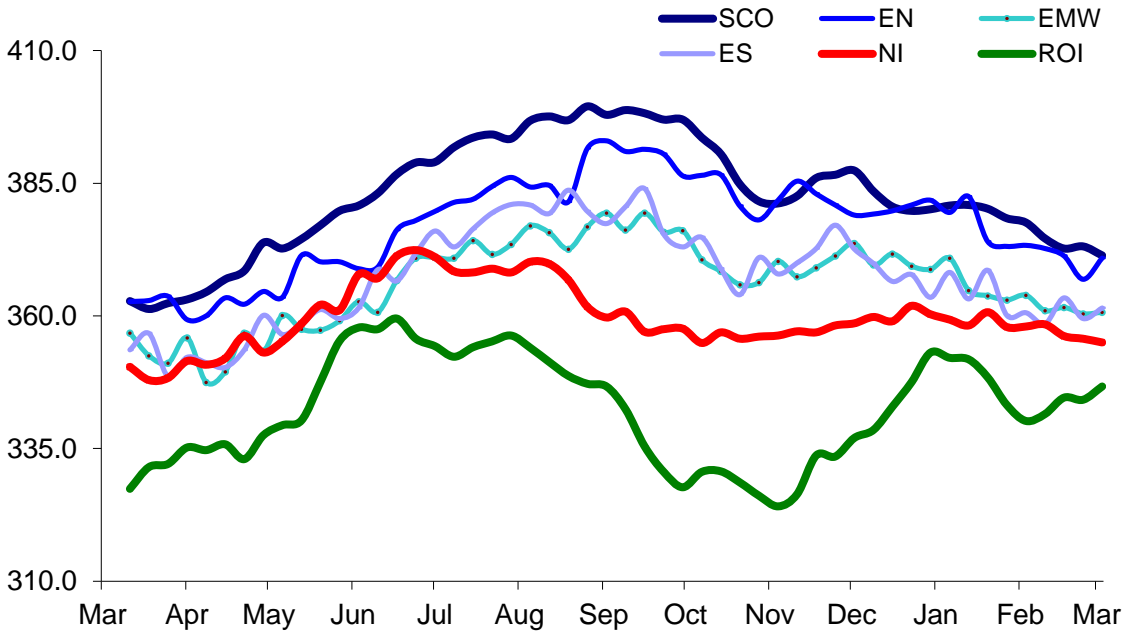
52 Weeks to 03 March 2018



Prices relate to UK Dressing Specification

British Isles R4 Steer Price

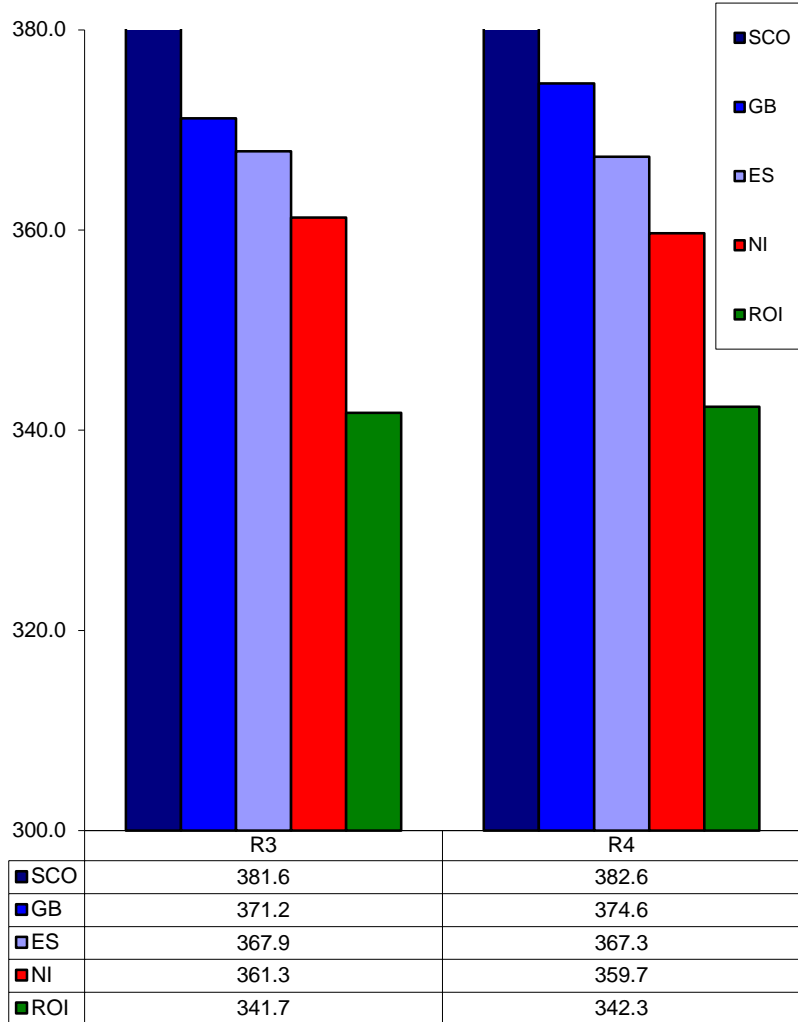
52 Weeks to 03 March 2018



Prices relate to UK Dressing Specification

British Isles Average R3 and R4 Steer price

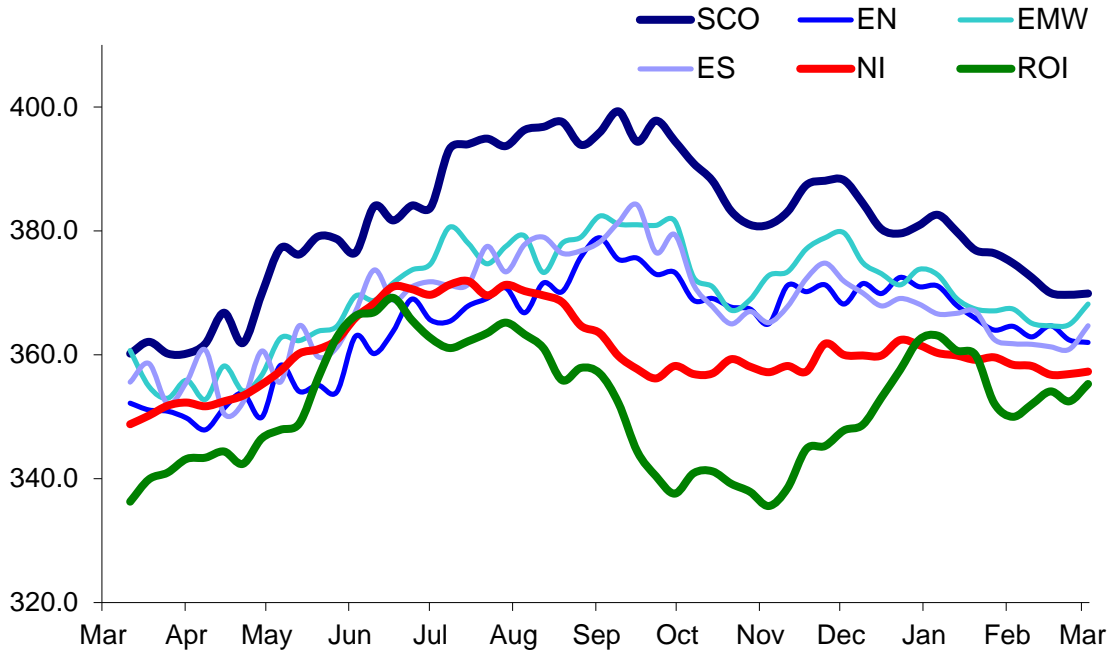
52 Weeks to 03 March 2018



Prices relate to UK Dressing Specification

British Isles R3 Heifer Price

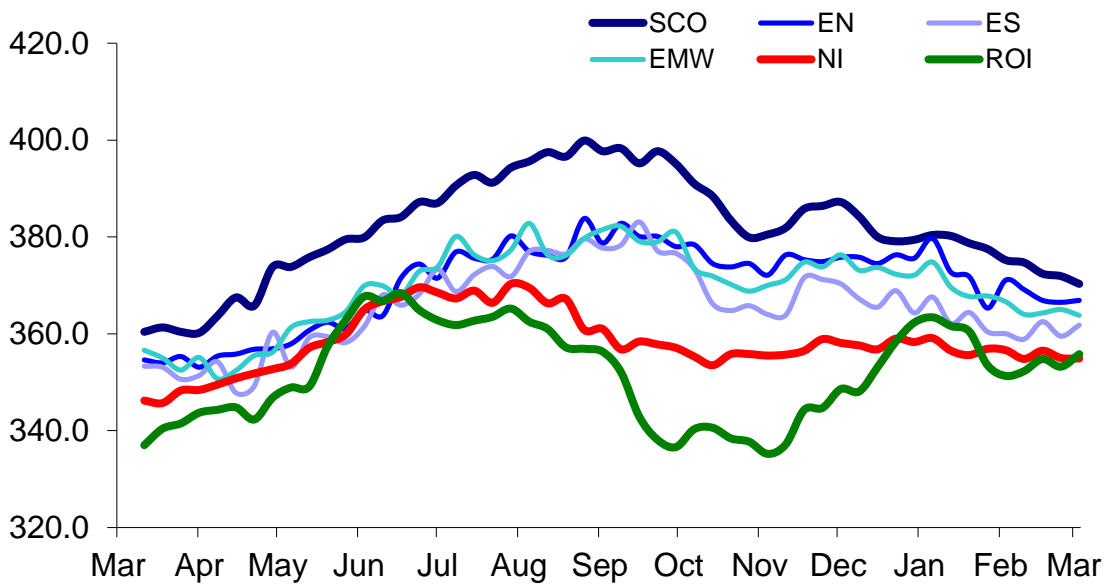
52 Weeks to 03 March 2018



Prices relate to UK Dressing Specification

British Isles R4 Heifer Price

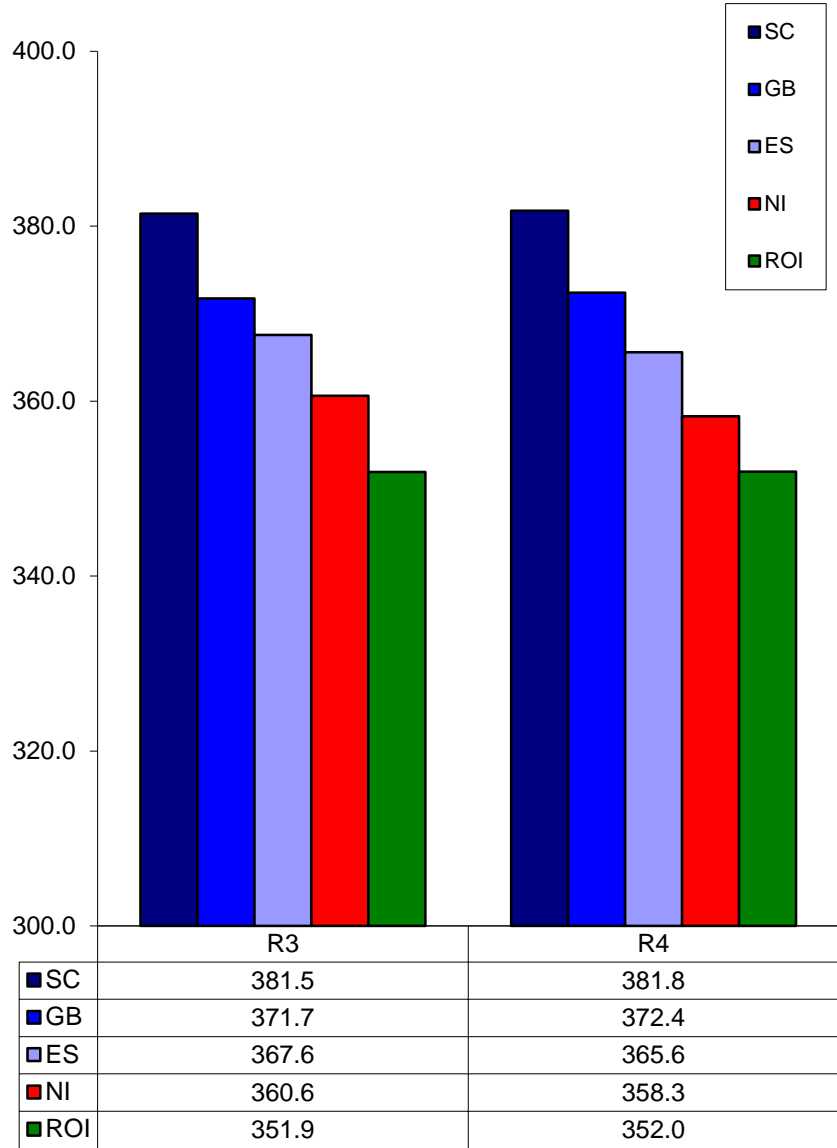
52 Weeks to 03 March 2018



Prices relate to UK Dressing Specification

British Isles Average R3 and R4 Heifer price

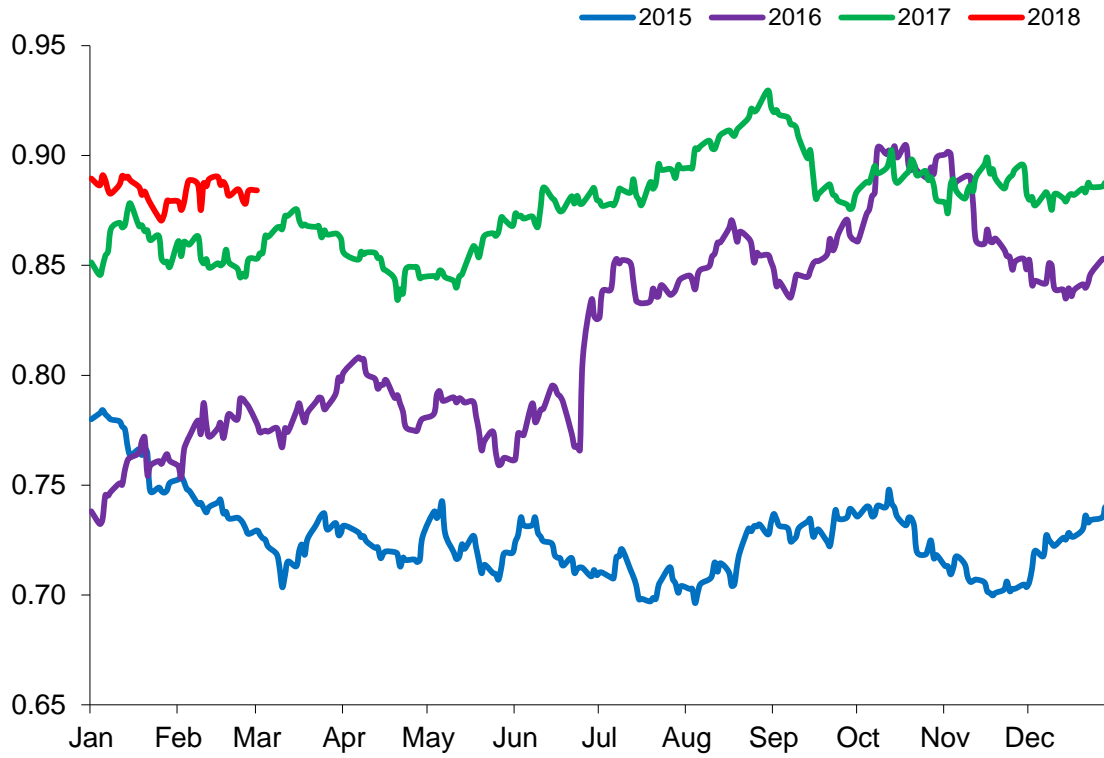
52 Weeks to 03 March 2018



Prices relate to UK Dressing Specification

Exchange Rate £ / Euro

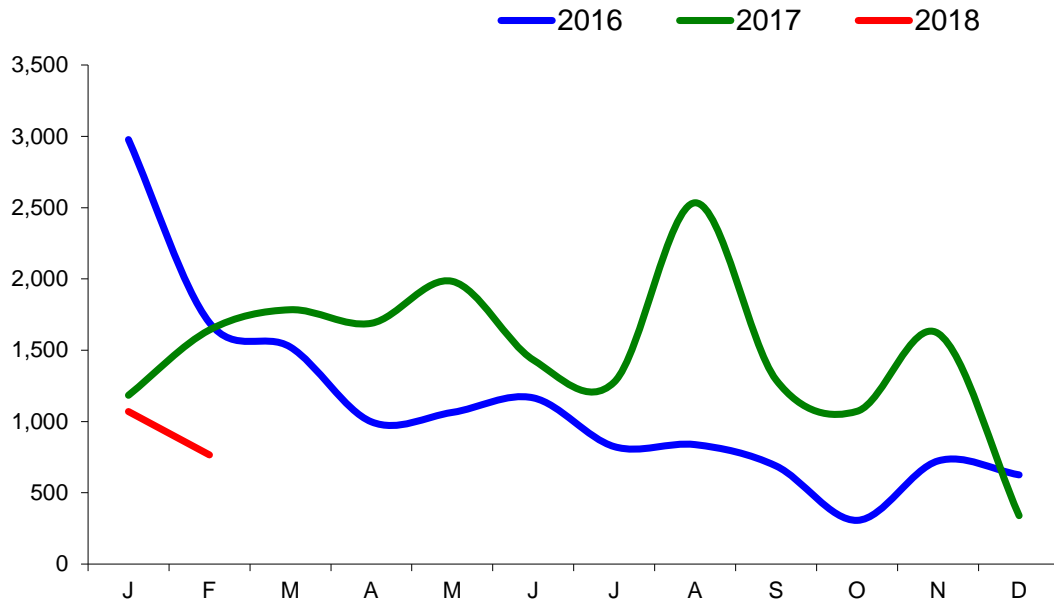
01 January 2015 –28 February 2018



Imports

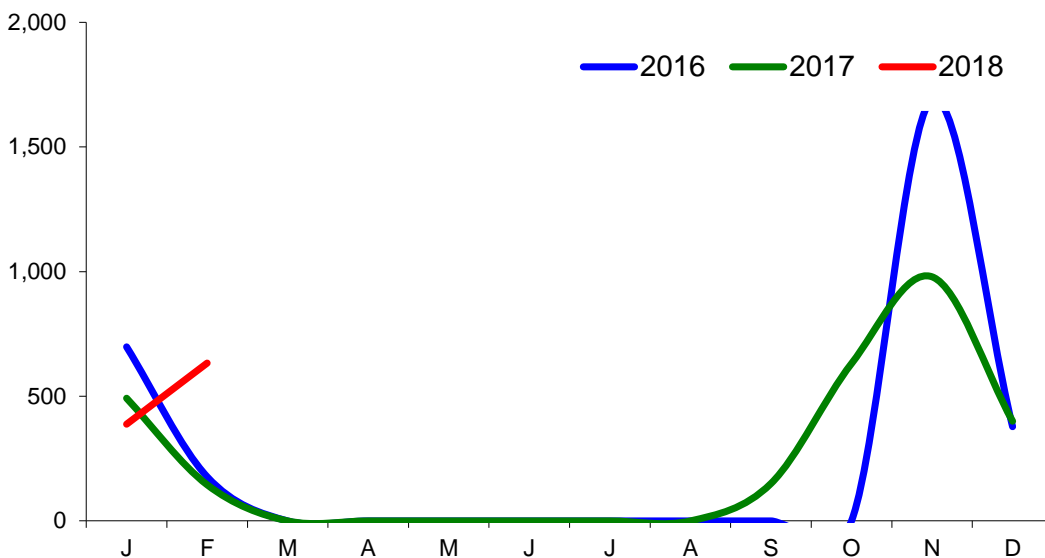
Monthly Live Imports of Cattle into NI for Direct Slaughter

From ROI and GB Combined



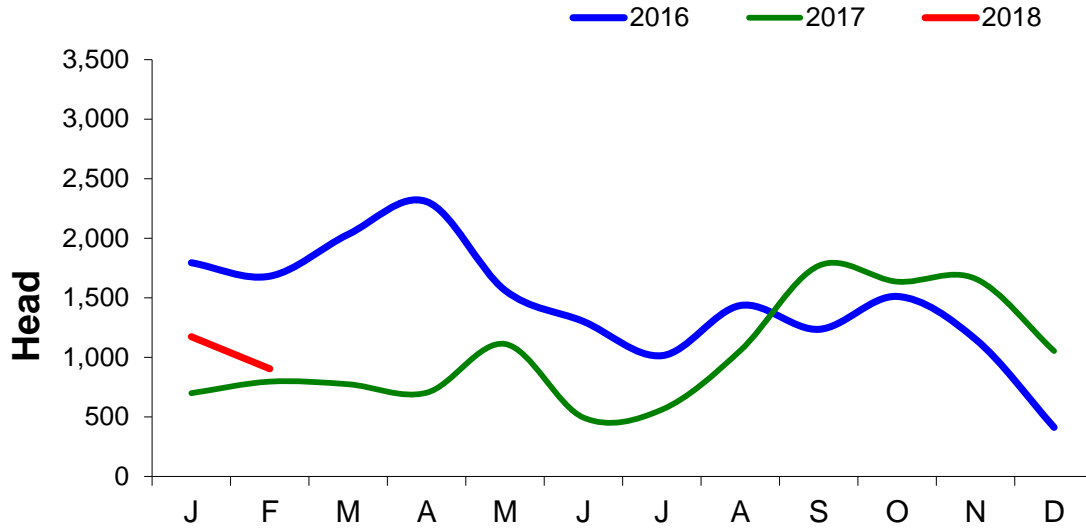
Monthly Live Imports of Sheep into NI for Direct Slaughter

From ROI and GB Combined



Exports

Monthly Live Exports of Cattle from NI into ROI and GB



Monthly Live Exports of Sheep from NI into ROI and GB

