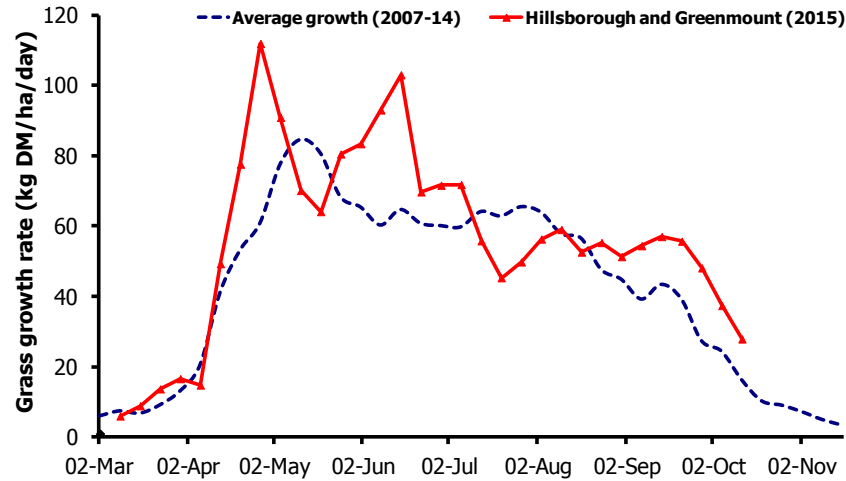


GrassCheck

Week beginning 12 Oct 2015

Grass Growth and Quality

Grazing Management Focus

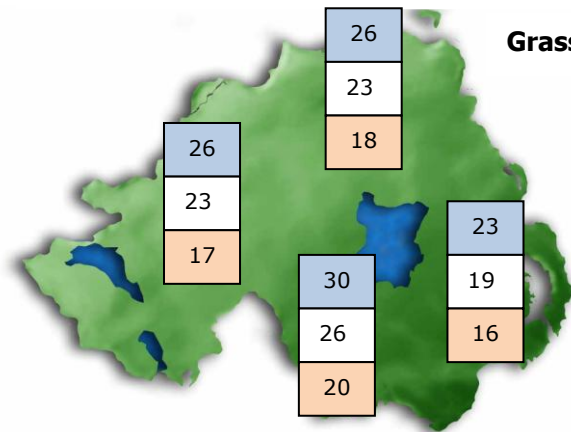


3-week Grass Growth (kg DM/ha/day)*	
Greenmount	26
Hillsborough	30
Downpatrick	22

*270 kg N/ha/year applied

Grass Quality	
Dry matter (%)	13.3
ME (MJ/kg DM)	11.8
Crude protein (%)	23.2
Sugars (% DM)	11.4

Grass growth predictions represent the average daily growth over a 21 day period



Grass Growth Predictions (kg DM/ha/day)

Current
1 week ahead
2 weeks ahead

General comment: Grass growth remains well above the seasonal average, with the settled weather providing an excellent opportunity to graze swards out cleanly and set the grazing platform up for spring 2016. This is the last bulletin for 2015.

Seamus Lappin manages a herd of 60 Holstein cows at Middletown Co Armagh. Rolling herd performance is 9,394 l/cow from 3.1 t of concentrate with milk from forage at 2,309 l/cow. 25 cows and heifers have calved since the start of August and a further 30 will calve by the end of December. The herd is currently grazed by day and housed at night.



Grass supply

Average farm cover	2,300 kg DM/ha
Pre-grazing cover	2,540 kg DM/ha
Current grass growth	12 kg DM/ha/day
Herd grass demand	25 kg DM/ha/day

Grass wedge

Stocking rate	4.5 cows/ha
Rotation length	30 days
Estimated grass intake	6.7 kg DM/cow/day
Post-grazing target	1,800 kg DM/ha

Cow performance

Milk yield and quality	27.1 litres/cow/day, 3.88% BF, 3.37% PR
Concentrate feed level	9.1 kg/cow/day
Milk from forage	6.8 litres/cow/day

Management issues

Cows are currently completing the final rotation and are grazing across eight fields close to the farmyard between morning and evening milkings. Swards are being grazed out cleanly by a group of in-calf heifers. Cows average 149 days in milk with a yield range of 15 - 50 kg of milk per cow per day. At night cows are offered a TMR of up to 30 kg 2nd cut silage and 2 kg of an 18% concentrate blend. Feed that is not eaten is removed the following morning. Cows are topped up in the parlour. Cows calved since August are being offered concentrates on a 'lead feed' basis at 10 kg for cows and 8 kg for heifers. Stale cows are fed to yield with Seamus estimating that his current feeding supplies M+8 kg of milk before parlour feeding so even the lowest yielding cows are currently being fed in the parlour.

