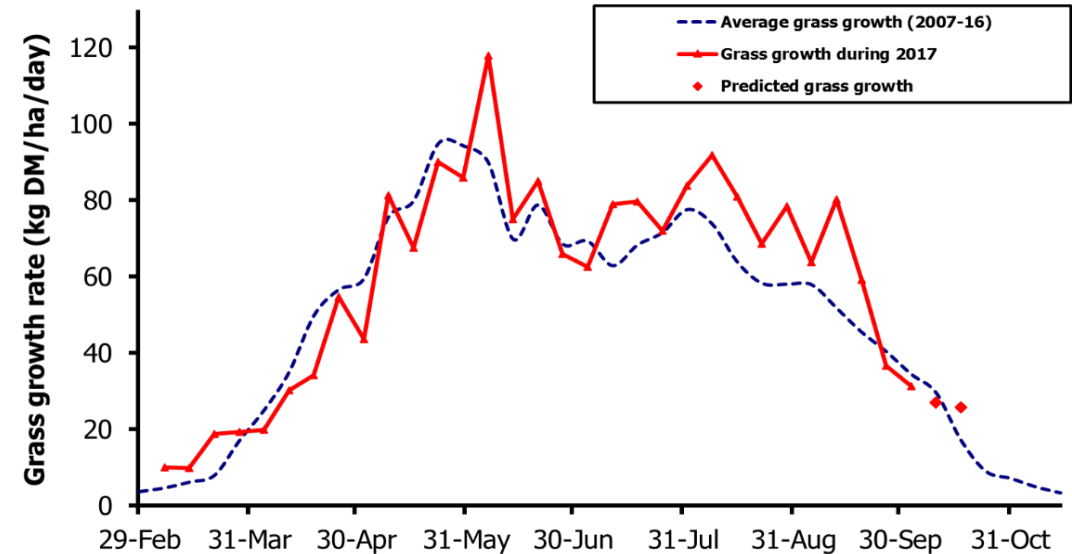
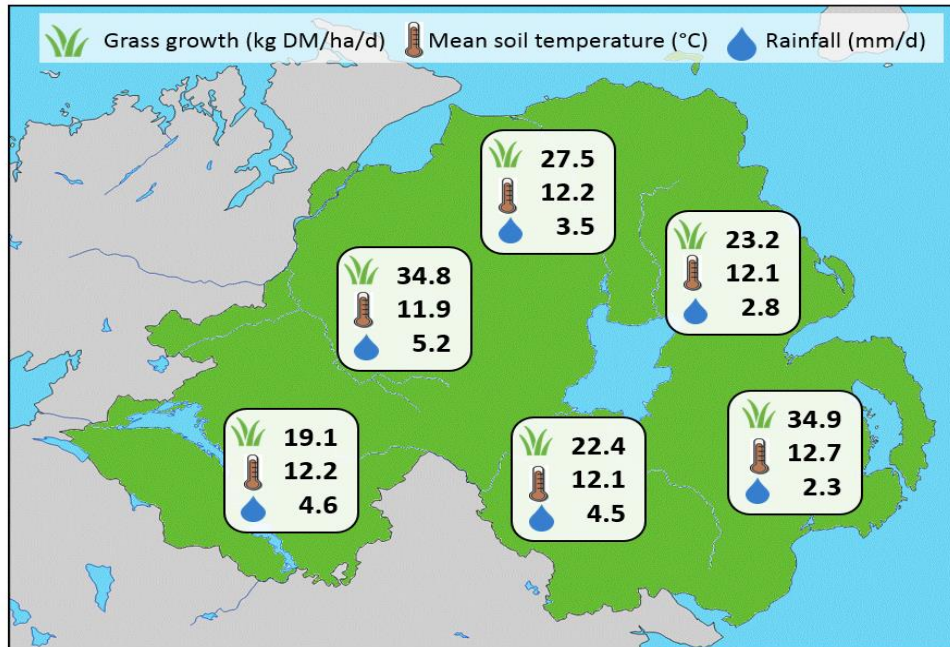


## Week Beginning 2 October 2017



### MANAGEMENT NOTES:

- September summary:
  - Good grass growth was evident in September with 1.34 t DM/ha produced across the GrassCheck beef and dairy farms during the month.
  - Grass quality remained high, averaging 14.2% DM, 19.7% CP and 11.1 ME.
  - Although sunshine hours and temperatures remained at average levels for the month, 145mm of rainfall was recorded (45% above the long term average). This created difficult grazing conditions and very high average farm covers have been evident on many farms in the last few weeks.
- Challenging conditions remain into October with 30mm of rain recorded in the past week, although grass quality remains good. Where grazing possible, on-off grazing strategies will help reduce surplus grass and ensure better spring growth.

Grass Growth (kg DM/ha/day)		Grass Quality	
		GrassCheck plots	On-farm
Dairy farm 7d average*	31.1	DM (%)	14.0
Beef farm 7d average*	36.8	ME (MJ/kg DM)	11.3
<b>GrassCheck plots#</b>		CP (% DM)	21.6
Previous 3 weeks	31.3	WSC (% DM)	9.0
Forecast 7 days	27.0		
Forecast 14 days	25.7		

\*On-farm grass growth data supplied by AgriNet

# GrassCheck plots receive 270 kgN/ha/year

