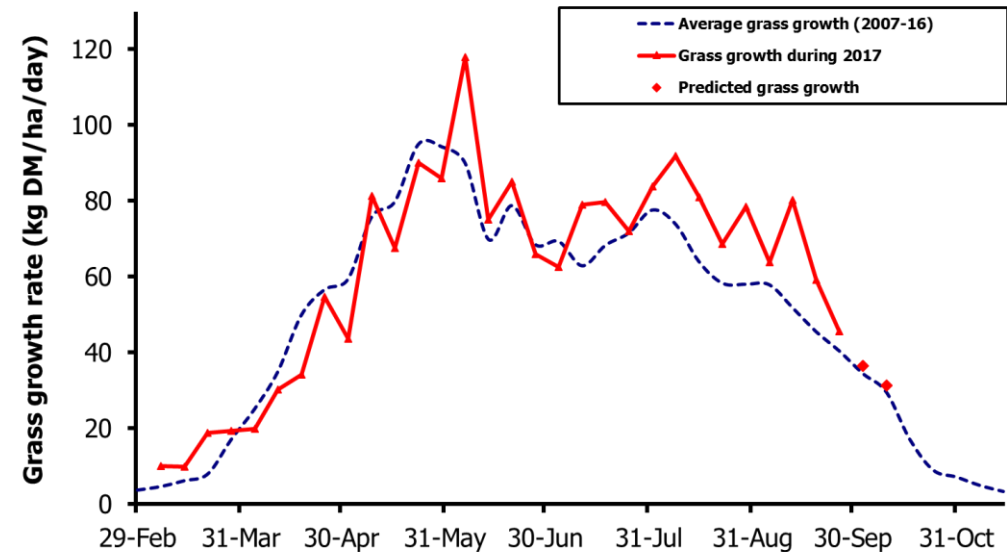
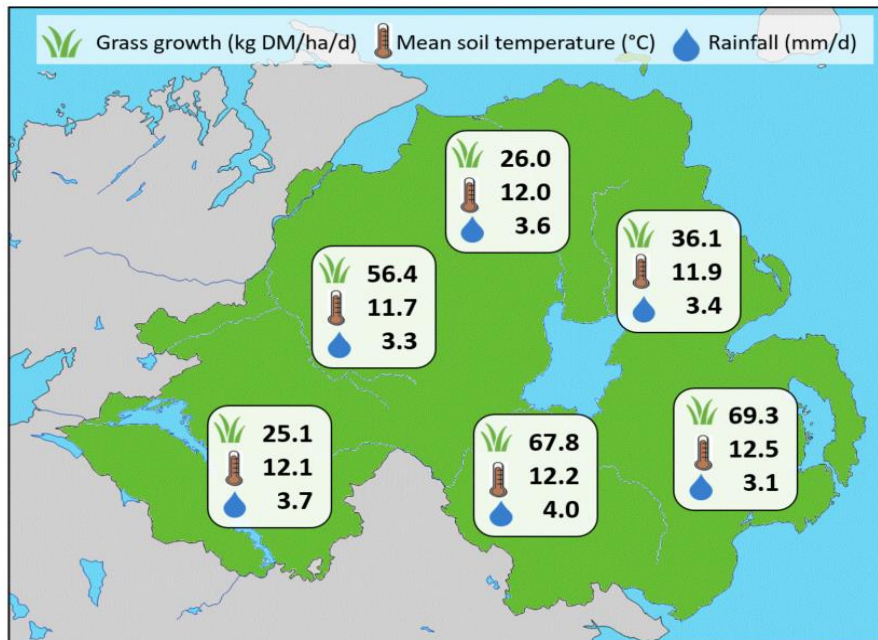


## Week Beginning 25 September 2017



### MANAGEMENT NOTES:

- Growth has declined significantly this week on most farms with saturated farms seeing the biggest decline. However, drier farms are still growing at around 70kgDM/ha/day, well over twice the growth of the wettest farms.
- Because of the recent good growth there are many high covers that require skill to graze out in wet conditions:
  - Graze animals for 2-4 hour periods, removing animals when grass has been eaten
  - Graze in square blocks rather than narrow strips
  - Graze from the back of the paddock, so animals never walk on grazed ground
  - Use multiple entrances to a paddock to minimise poaching

Grass Growth (kg DM/ha/day)		Grass Quality	
		GrassCheck plots	On-farm
Dairy farm 7d average*	55.1		
Beef farm 7d average*	53.8		
<b>GrassCheck plots#</b>			
Previous 3 weeks	45.6		
Forecast 7 days	40.4		
14 days	31.3		
		<b>DM (%)</b>	13.9
		<b>ME (MJ/kg DM)</b>	11.0
		<b>CP (% DM)</b>	18.4
		<b>WSC (% DM)</b>	12.2
			10.3

\*On-farm grass growth data supplied by AgriNet

# GrassCheck plots receive 270 kgN/ha/year

