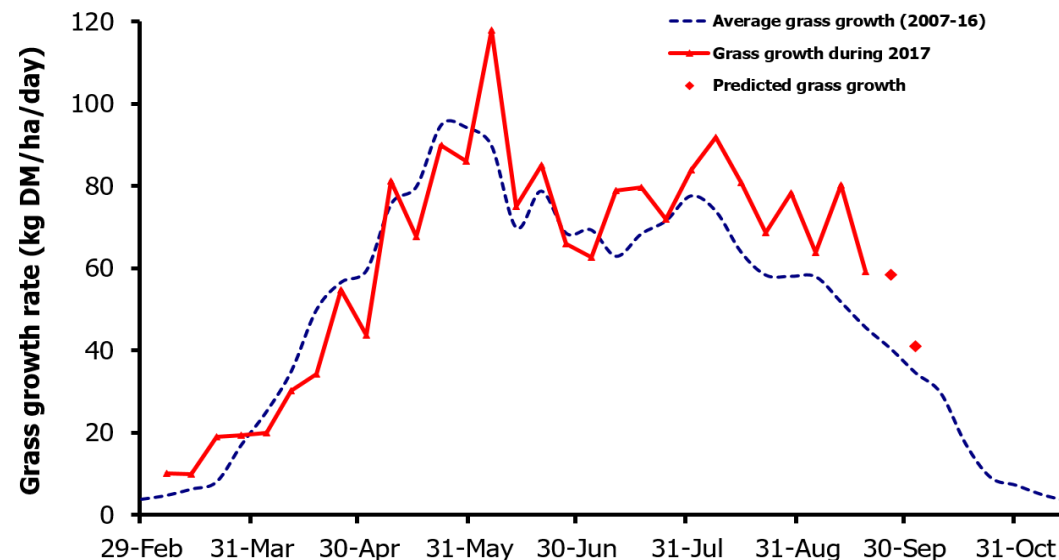
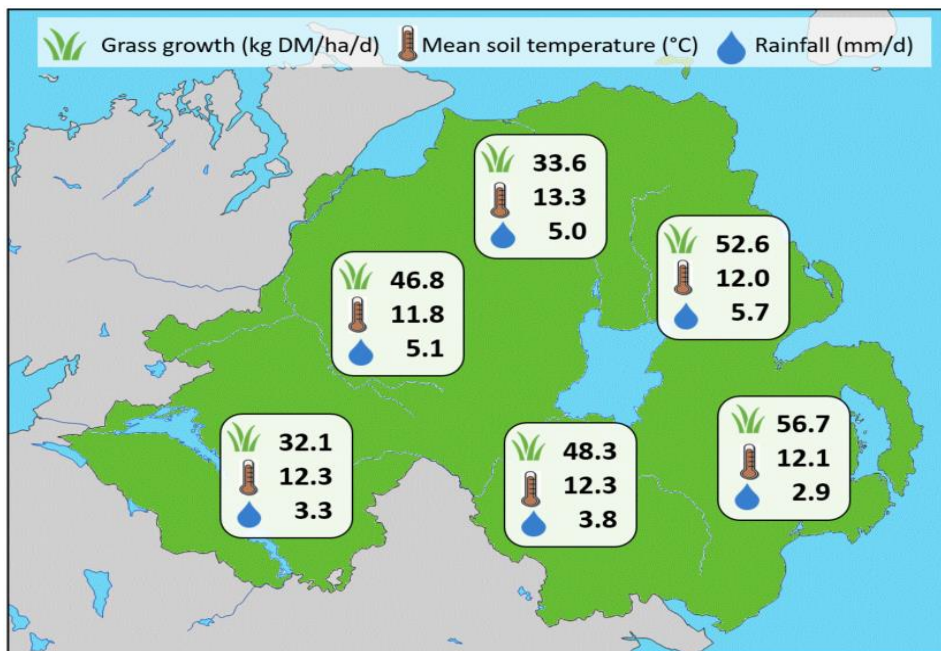


Week Beginning 18 September 2017



MANAGEMENT NOTES:

- Growth remains above average for the time of year, despite the seasonal decline. However, there is a considerable variation across farms.
- With the improved weather grass growth is set to remain above the seasonal average for the coming week.
- Grazing paddocks out cleanly in the autumn is important to ensure a high-quality supply grass next spring:
 - Where ground conditions allow, graze out the paddocks cleanly.
 - Where ground conditions are marginal consider back fencing or using lighter stock.
 - For those that are housed look for opportunities to get stock out again

Grass Growth (kg DM/ha/day)		Grass Quality	
		GrassCheck plots	On-farm
Dairy farm 7d average*	51.3		
Beef farm 7d average*	35.1		
GrassCheck plots#			
Previous 3 weeks	59.1		
Forecast 7 days	58.5		
14 days	41.1		
		DM (%)	12.8
		ME (MJ/kg DM)	11.0
		CP (% DM)	19.1
		WSC (% DM)	9.0
			13.7
			11.1
			19.0
			10.2

*On-farm grass growth data supplied by AgriNet

GrassCheck plots receive 270 kgN/ha/year

