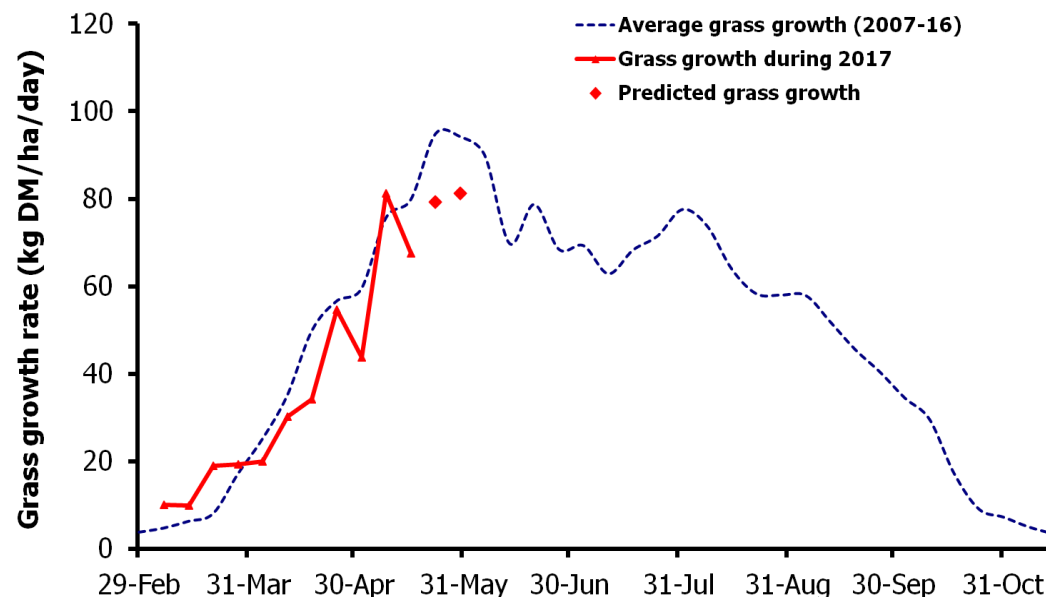
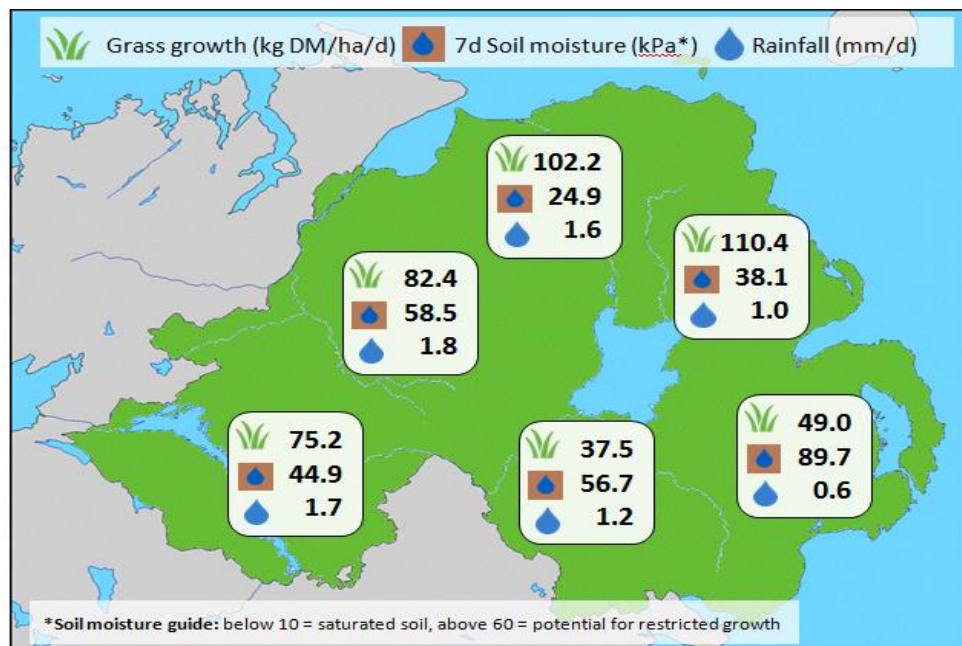


Week Beginning 15 May 2017



MANAGEMENT NOTES:

- Dry conditions restricted grass growth on the GrassCheck plots last week however, with most areas of N.I. receiving 5 – 10mm of rainfall by the end of the week growing conditions have improved markedly.
- Considerable county to county variations however still exists across the Province with growth rates exceeding 100kg DM/ha/day in areas of higher soil moisture.
- Strong growth is expected to dominate in the coming weeks, giving rise to surpluses on farm and a potential drop in grass quality as grass enters the reproductive period. Take all opportunities to graze paddocks out cleanly and consider closing out paddocks with covers over 3000kg DM/ha.
- For the latest grass and weather info visit agrisearch.org/GrassCheck

Grass Growth (kg DM/ha/day)		Grass Quality	
		GrassCheck plots	On-farm
Dairy farm 7d average*	85.4	DM (%)	14.5
Beef farm 7d average*	69.3	ME (MJ/kg DM)	11.7
GrassCheck plots#		CP (% DM)	20.6
Previous 3 weeks	67.6	WSC (% DM)	12.6
Forecast 7 days	79.2		
Forecast 14 days	81.3		

*On-farm grass growth data supplied by AgriNet

GrassCheck plots receive 270 kgN/ha/year



