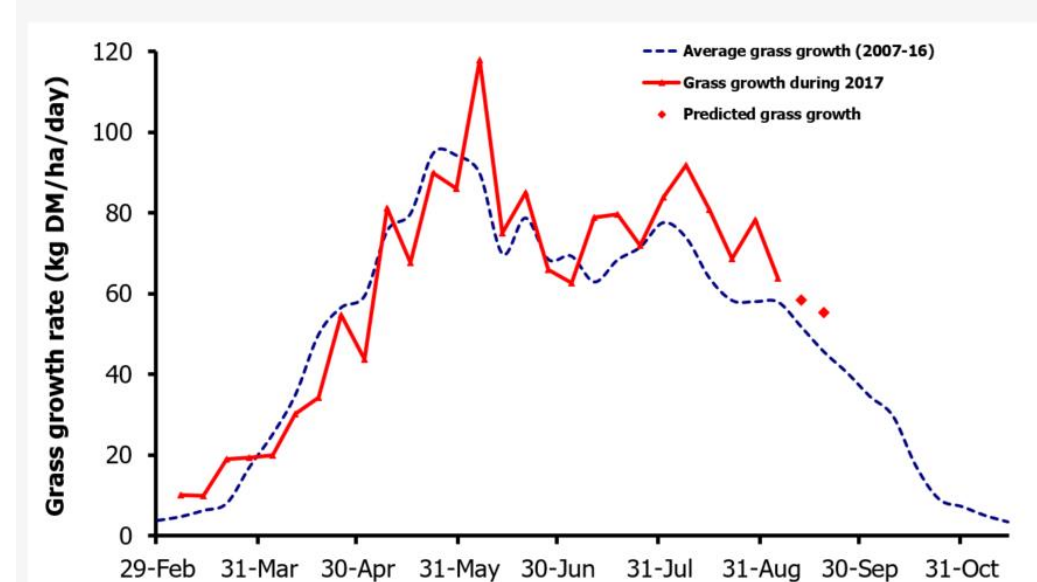
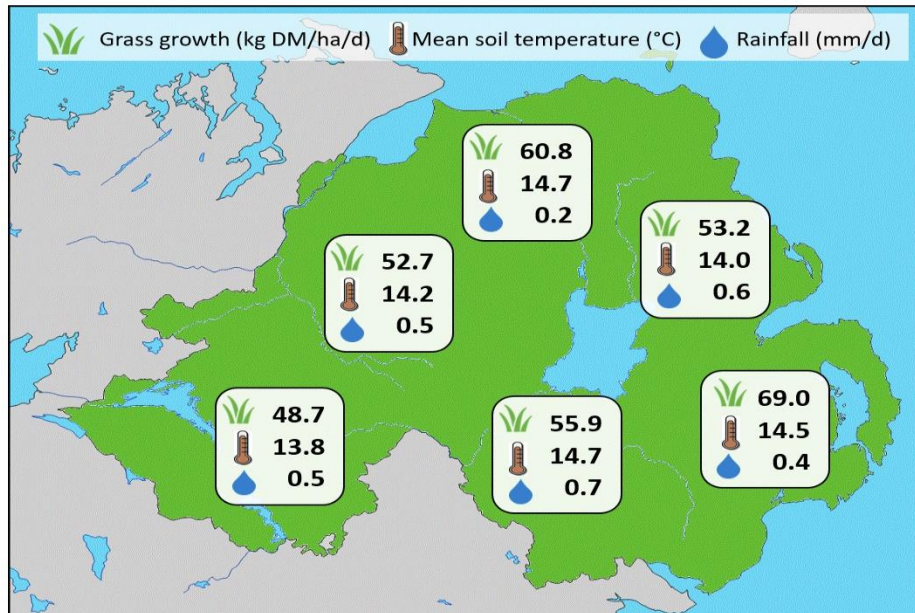


Week Beginning 4 September 2017



MANAGEMENT NOTES:

- Growth continues to be marginally above average for this time of year, however lower soil temperature and decreased day length have contributed to an 8 kg DM/ha/day reduction in growth rate from last week.
- As growth continues to slow, increase the rotation length. Where ground conditions allow, graze out the paddocks cleanly to ensure a good supply of high quality grass into the autumn and next spring.
- For those considering late fertiliser application, remember the last date for spreading is 15th September.
- More information on the 2017 GrassCheck project will be on show at the AFBI Dairy Innovation in Practice farm walks taking place 12 -14 September. Visit afbini.gov.uk for more information and to register for the events.

Grass Growth (kg DM/ha/day)		Grass Quality	
		GrassCheck plots	On-farm
Dairy farm 7d average*	59.6	DM (%)	12.3
Beef farm 7d average*	50.9	ME (MJ/kg DM)	10.8
GrassCheck plots[#]		CP (% DM)	18.1
Previous 3 weeks	63.9	WSC (% DM)	8.2
Forecast 7 days	58.4		
Forecast 14 days	55.3		

*On-farm grass growth data supplied by AgriNet

[#]GrassCheck plots receive 270 kgN/ha/year

