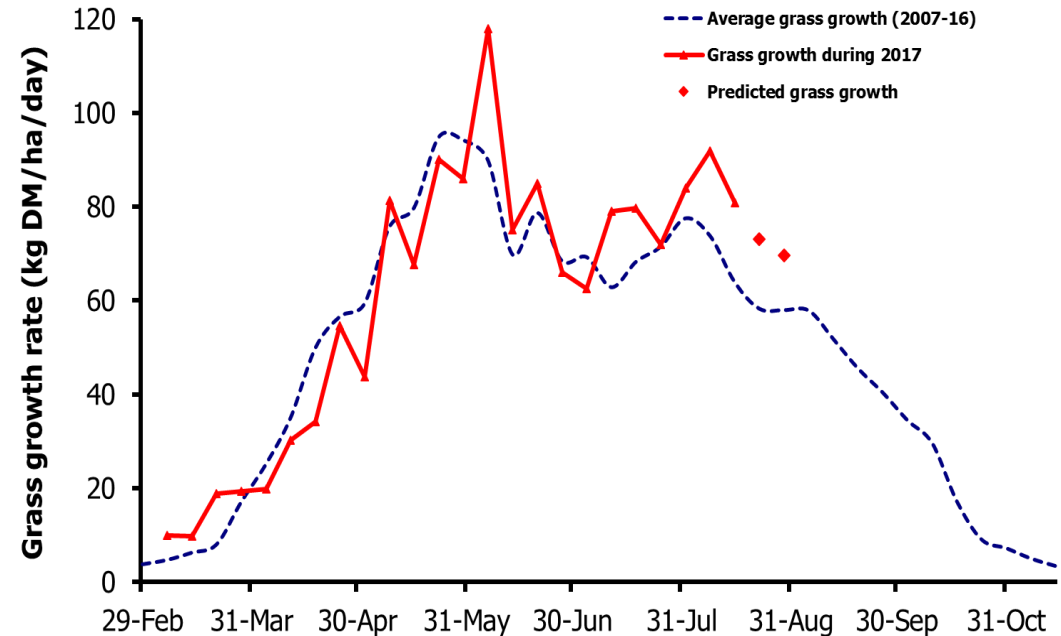
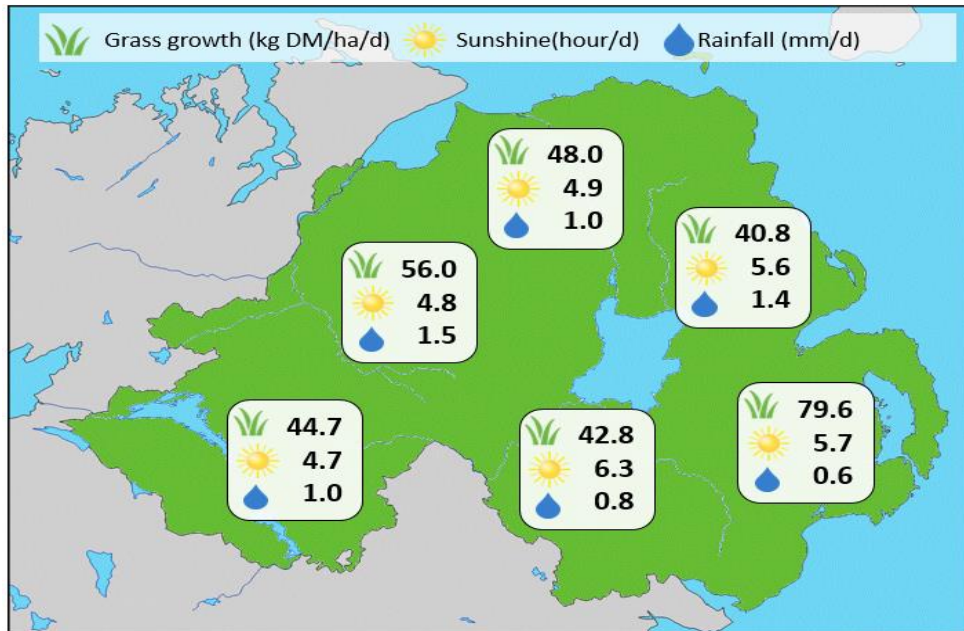


## Week Beginning 14 August 2017



### MANAGEMENT NOTES:

- Lingering cold and overcast conditions have seen grass growth rates fall this week. This was particularly noticeable on farm with growth rates declining to 55kg DM/ha across beef and dairy farms.
- Grass quality however has started to improve with increases in dry matter content helping achieve better grazing intakes.
- Now is a good time to start preparing autumn grazing. Regularly monitoring growth rates will help in preparing an autumn grass budget.
- For the latest grass and weather info visit [agrisearch.org/GrassCheck](http://agrisearch.org/GrassCheck)

Grass Growth (kg DM/ha/day)		Grass Quality		
		GrassCheck plots	On-farm	
Dairy farm 7d average*	57.7	DM (%)	11.9	15.2
Beef farm 7d average*	49.9	ME (MJ/kg DM)	10.9	11.1
<b>GrassCheck plots#</b>		CP (% DM)	16.3	17.1
Previous 3 weeks	80.9	WSC (% DM)	7.7	10.4
Forecast 7 days	73.1			
Forecast 14 days	69.7			

\*On-farm grass growth data supplied by Agrinet

# GrassCheck plots receive 270 kgN/ha/year

