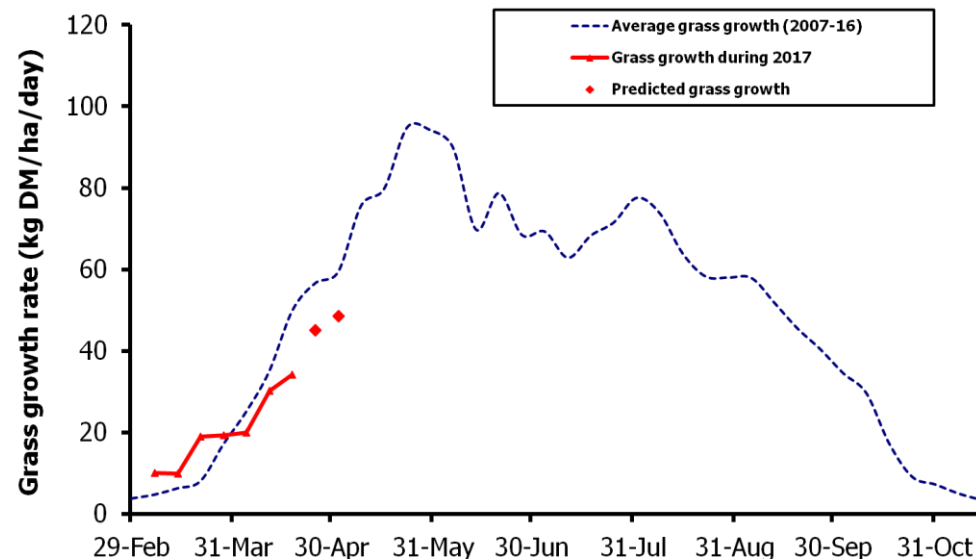
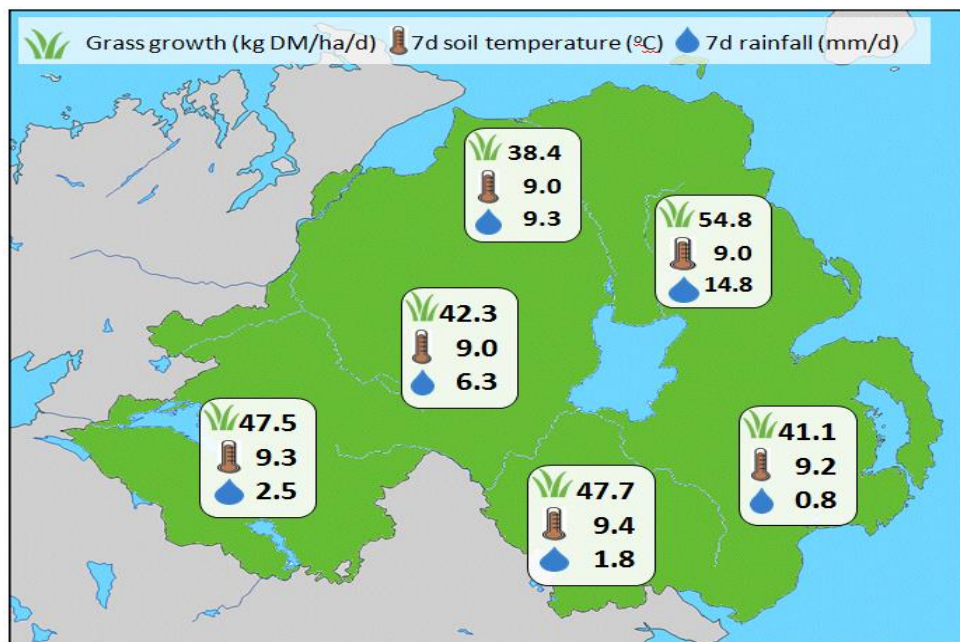


Week Beginning 17 April 2017



MANAGEMENT NOTES:

- Grass growth rates are rising again this week but with continued low night time temperatures forecast growth is expected to remain slightly below the seasonal average.
- Grass covers are looking strong across many farms and with many herds turning out to grass it is vital to walk the grazing platform regularly to stay on top of covers.
- However soil moistures and hence grazing conditions are proving hugely variable across the country and for those wetter areas extended grazing techniques can be used to maintain cows at grass.
- For the latest grass and weather info visit agrisearch.org/GrassCheck

Grass Growth (kg DM/ha/day)		Grass Quality	
		GrassCheck plots	On-farm
Dairy farm 7d average*	49.3	DM (%)	17.4
Beef farm 7d average*	40.8	ME (MJ/kg DM)	11.8
GrassCheck plots#		CP (%)	20.0
Previous 3 weeks	34.1	WSC (%)	15.2
Forecast 7 days	45.0		
Forecast 14 days	48.6		

*On-farm grass growth data supplied by AgriNet

*On-farm data for week ending 14/04/17

#GrassCheck plots receive 270 kgN/ha/year

