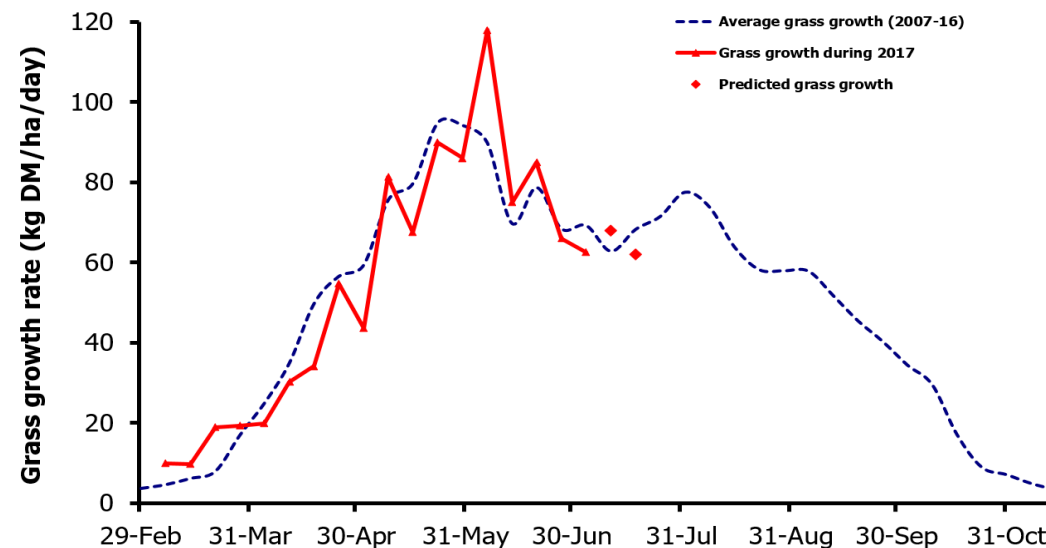
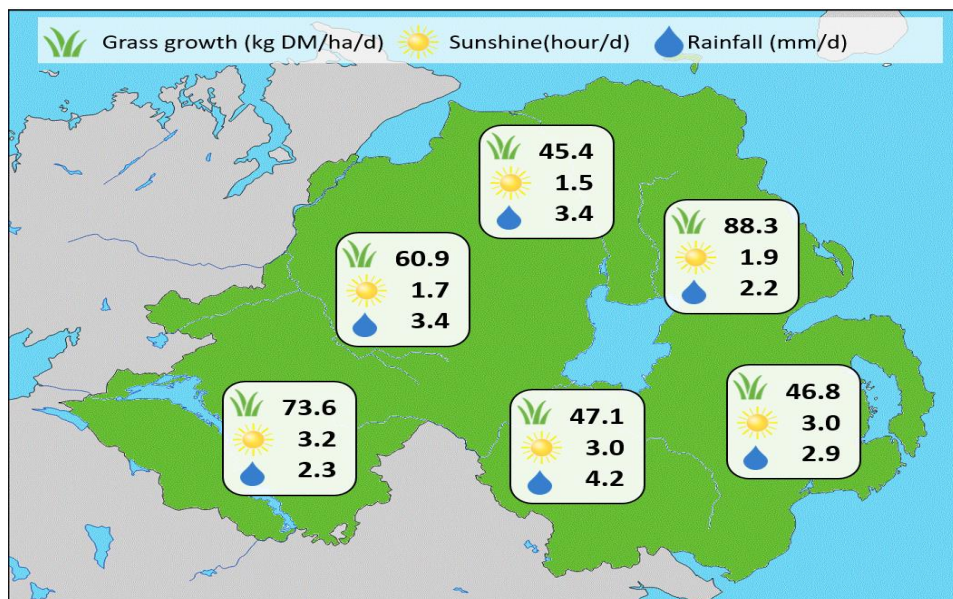


## Week Beginning 3 July 2017



Grass Growth (kg DM/ha/day)		Grass Quality	
		GrassCheck plots	On-farm
Dairy farm 7d average*	70.1	DM (%)	15.1
Beef farm 7d average*	46.8	ME (MJ/kg DM)	11.6
<b>GrassCheck plots#</b>		CP (% DM)	19.8
Previous 3 weeks	62.6	WSC (% DM)	12.6
Forecast 7 days	67.9		
14 days	62.6		

### MANAGEMENT NOTES:

- Growth remains typical for this time of year, with increased growth expected this week.
- Due to the recent wet weather grass dry matter content has declined which may depress intake. With further unsettled weather forecast, grass dry matters are likely to remain depressed.
- On heavier soils mitigate poaching by using multiple gateways and back fencing.
- It is important to graze paddocks out cleanly to maintain grass quality for the next rotation. If this is not possible due to the weather consider the use of a topper.
- For the latest grass and weather info visit [agrisearch.org/GrassCheck](http://agrisearch.org/GrassCheck)

\*On-farm grass growth data supplied by AgriNet

# GrassCheck plots receive 270 kgN/ha/year

