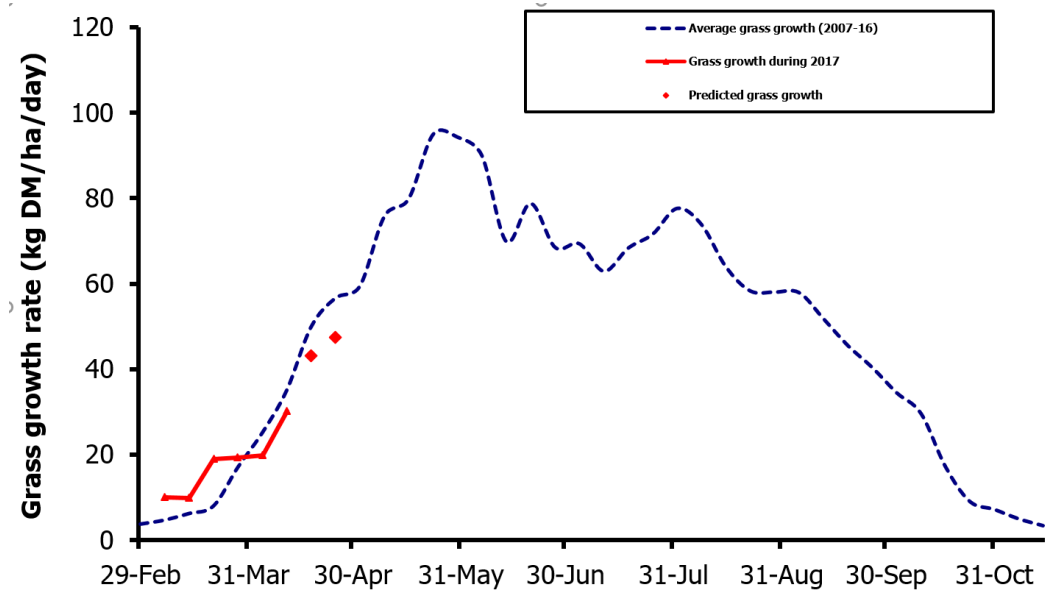
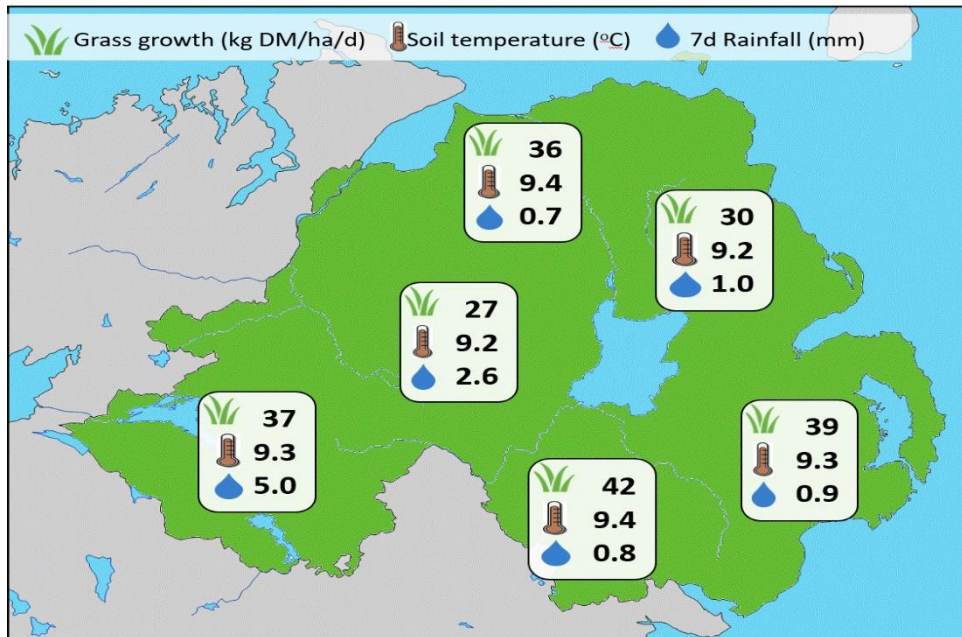


## Week Beginning 10 April 2017



### MANAGEMENT NOTES:

- Improved weather and ground conditions have led to a significant increase in grass growth and this is predicted to accelerate further in the coming days.
- It is vital to get stock out immediately to maximise use of high quality spring pasture. Farmers should be targeting to graze covers of no more than 2,800kgDM/ha and graze down to residuals of 1,500kgDM/ha
- This is the perfect time for farmers to take control of grass swards and implement grazing management practices to maximise grass utilisation and animal performance for the 2017 grazing season.
- For the latest grass and weather info visit [agrisearch.org/GrassCheck](http://agrisearch.org/GrassCheck)

Grass Growth (kg DM/ha/day)	
Dairy farm average*	35.0
Beef farm average*	35.6
GrassCheck plots#	
Previous 3 weeks	30.2
Forecast 7 days	43.2
14 days	47.3

	Grass Quality	
	GrassCheck plots	On-farm
DM (%)	16.9	18.9
ME (MJ/kg DM)	11.9	12.1
CP (%)	22.8	20.1
WSC (%)	12.9	15.1

\*On-farm grass growth data supplied by AgriNet

\*On-farm data for week ending 07/04/17

# GrassCheck plots receive 270 kgN/ha/year

