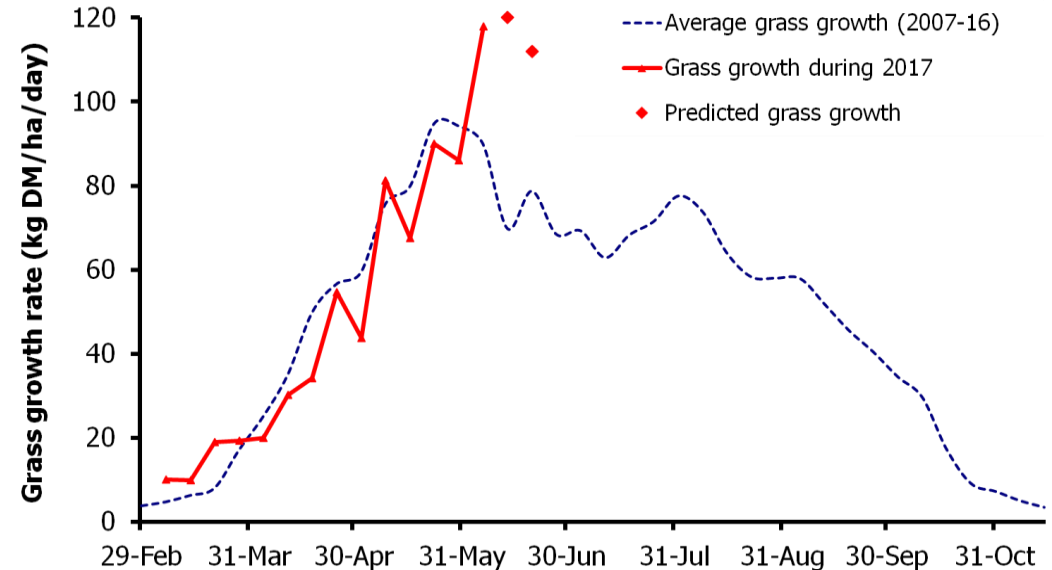
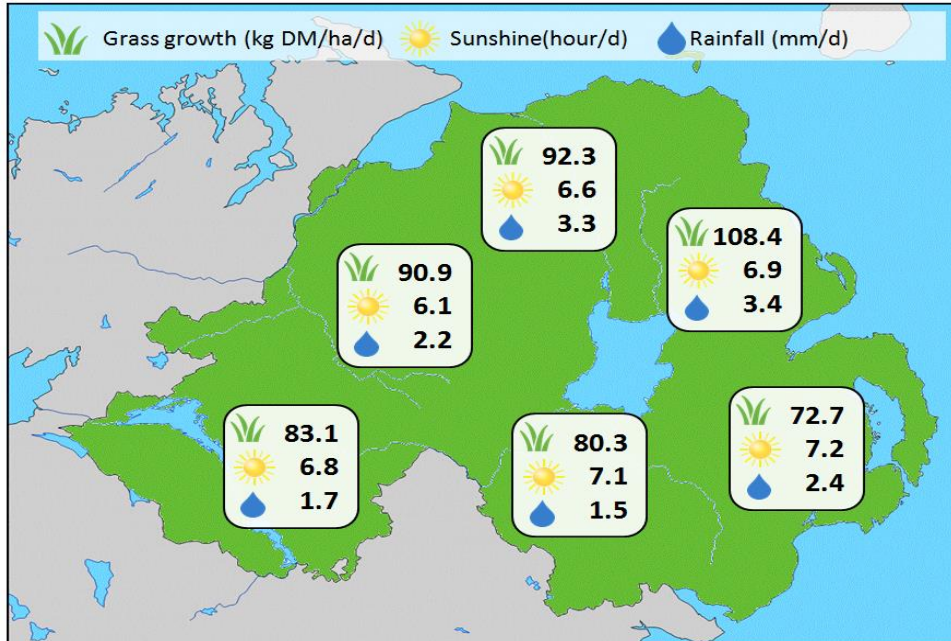


Week Beginning 5 June 2017



MANAGEMENT NOTES:

- Strong growth has again been evident this week across N.I. and looks set to continue with growth predictions exceeding 100kg DM/ha/day.
- Grass ME has recovered slightly as most swards move past the point of flowering and fibre levels reduce. However, the wet weather and low sunshine hours have also caused dry matter contents to fall, reducing the potential to achieve high dry matter intakes of grass. On some farms this may present a need for supplementary energy in the diet.
- On heavier soils, using multiple gateways and tracks will help ensure continued access to grass.
- For the latest grass and weather info visit agrisearch.org/GrassCheck

Grass Growth (kg DM/ha/day)		Grass Quality	
		GrassCheck plots	On-farm
Dairy farm 7d average*	79.9		
Beef farm 7d average*	89.3		
GrassCheck plots#			
Previous 3 weeks	118		
Forecast 7 days	120		
Forecast 14 days	112		
		DM (%)	15.8
		ME (MJ/kg DM)	11.4
		CP (% DM)	17.9
		WSC (% DM)	13.9
			17.8
			11.5
			19.2
			14.1

*On-farm grass growth data supplied by AgriNet
 # GrassCheck plots receive 270 kgN/ha/year

