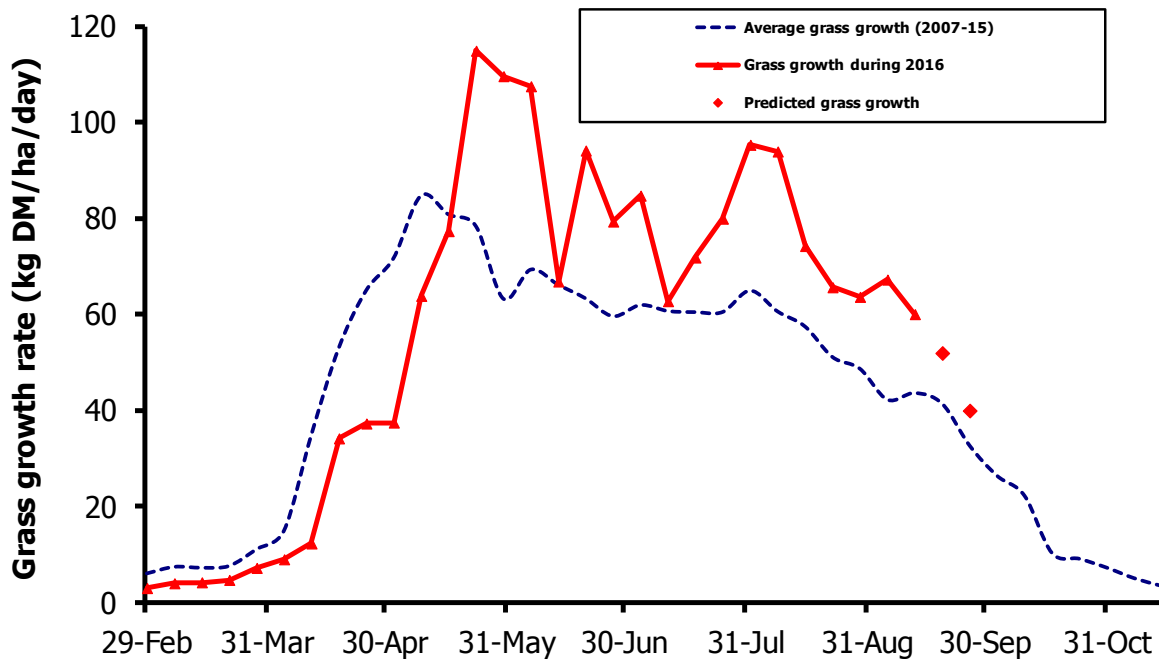


# GrassCheck

Week beginning 12 September



Grass growth and quality measured from swards at Hillsborough and Greenmount

Grass Growth (kg DM/ha/day)*		
Previous 3 weeks	12 Sep	60
Predicted	19 Sep	52
	26 Sep	40

\* 270 kg N/ha/year applied

Grass Quality	
Dry matter (%)	14.7
ME (MJ/kg DM)	11.7
Crude protein (%)	22.1
Sugars (% DM)	9.7

## Management notes.

- Although grass growth remains higher than average, cooler, changeable weather is forecast for the next two weeks and so growth is predicted to gradually decrease to around the seasonal average.
- Grass quality (ME & crude protein) has increased compared to previous weeks.
- Grazing conditions are variable, but challenging in many parts of the country, posing difficulties for grass utilisation.
- Practice extended grazing principles if necessary, including on/off grazing.
- Adjust meal feeding to reflect grazing conditions, milk yield and cow body condition score.