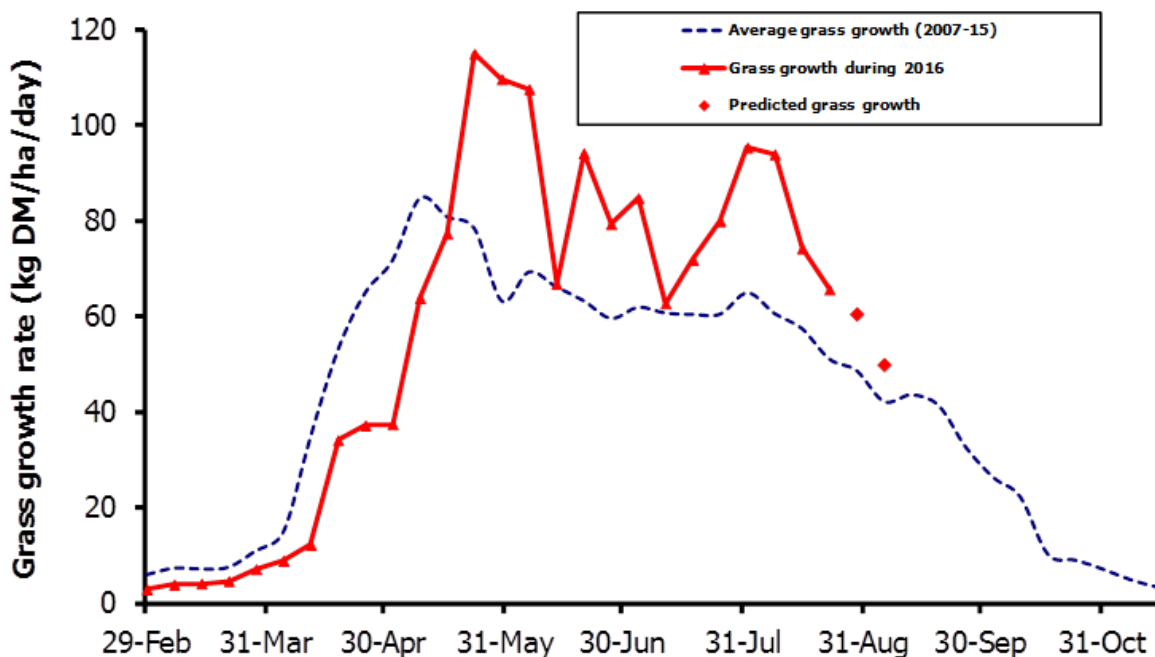


GrassCheck

Week beginning 22 August



Grass growth and quality measured from swards at Hillsborough and Greenmount

Grass Growth (kg DM/ha/day)*		
Previous 3 weeks	22 Aug	65.7
Predicted	29 Aug	60.6
	5 Sep	50.0

* 270 kg N/ha/year applied

Grass Quality	
Dry matter (%)	13.1
ME (MJ/kg DM)	11.3
Crude protein (%)	18.8
Sugars (% DM)	8.7

Management notes.

- The impact of autumn conditions on grass production is obvious with reduced day length and lower night temperatures, meaning growth rates are expected to decline steadily over the next two weeks.
- Both ME and sugars have declined from the previous week due to conditions.
- Continue to walk your grazing platform and make sure cows are going into the correct pre-grazing cover (2800-3000kg DM/ha).
- Review parlour feed settings (M+), particularly where grazing conditions are difficult.
- As highlighted grass production is starting to decline, you now need to manage the grass wedge for extended grazing into late autumn.