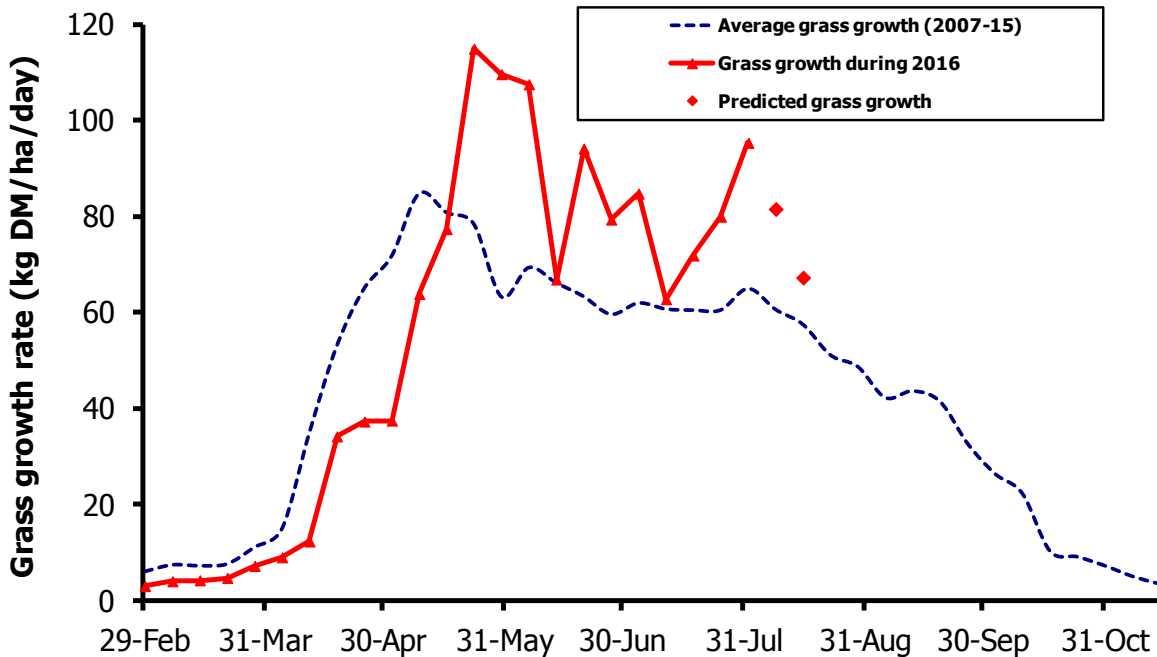


GrassCheck

Week beginning 1 August



Grass growth and quality measured from swards at Hillsborough and Greenmount

Grass Growth (kg DM/ha/day)*		
Previous 3 weeks	1 Aug	95
Predicted	8 Aug	82
	15 Aug	67

* 270 kg N/ha/year applied

Grass Quality	
Dry matter (%)	14.4
ME (MJ/kg DM)	11.5
Crude protein (%)	15.4
Sugars (% DM)	14.4

Management notes.

- As predicted last week, growth rates have continued to increase. It is anticipated they will decline over the next two weeks, but still remain above average.
- Grazing conditions are challenging on many farms due to the weather, resulting in reduced grass intakes. Aim to supplement this shortfall through an increase in parlour feeding (reduce parlour M+) and/or consider buffer feeding until grazing conditions improve.
- Apply extended grazing principles as conditions dictate.
- With grass growth well above average, continue to assess grass covers and ensure cows are going into high quality swards (2800-3000kg/DM/Ha, 1/3 up a wellington boot). If possible round bale paddocks above the target cover now, to maintain sward quality for milk production.