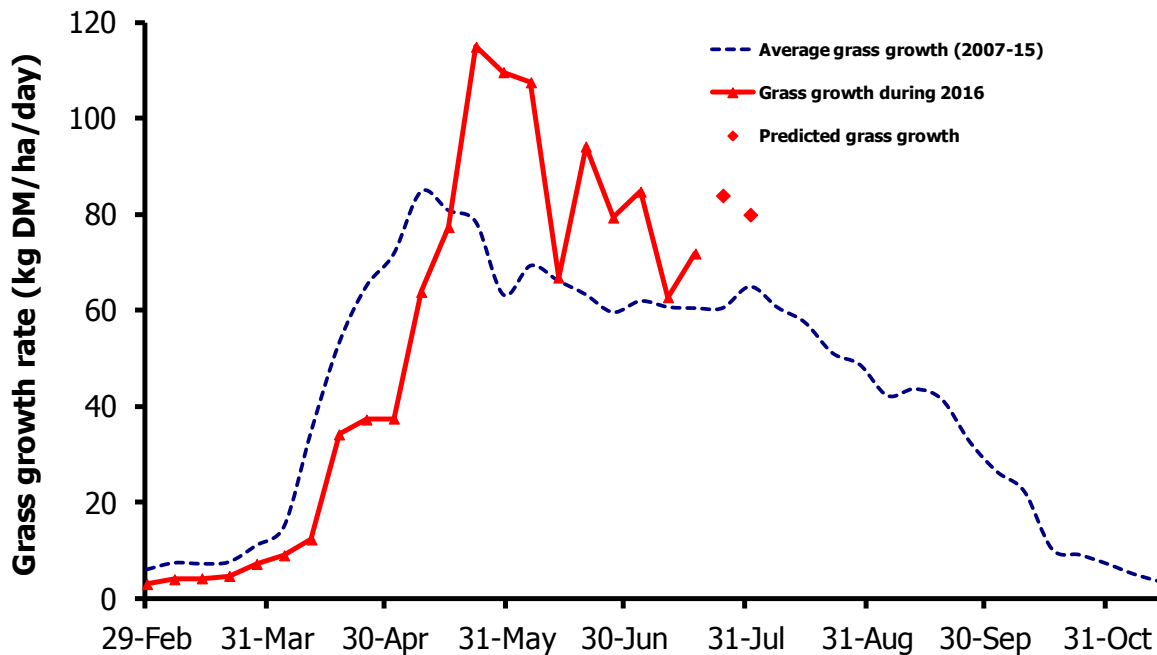


# GrassCheck

Week beginning 18 July



Grass growth and quality measured from swards at Hillsborough and Greenmount

Grass Growth (kg DM/ha/day)*		
Previous 3 weeks	18 July	72
Predicted	25 July	84
	1 August	80

\* 270 kg N/ha/year applied

Grass Quality	
Dry matter (%)	16.5
ME (MJ/kg DM)	11.5
Crude protein (%)	16.9
Sugars (% DM)	13.4

## Management notes.

- Current growth rate is marginally above the seasonal average and is predicted to increase further over the next two weeks, due to ideal growing conditions.
- Grass quality is around the seasonal average.
- As grazing conditions improve, aim to get back on track with fertiliser applications and topping, if required, to ensure quality and quantity going forward
- Continue to monitor concentrate fed rates and adjust accordingly, in line with cow body condition, grass quantity/quality and prevailing grazing conditions.
- Keep walking the grazing platform to monitor supply, aiming to have pre-graze covers of 2800 – 3000 kg DM/ha. Be proactive in cutting paddocks out now if grass is getting too long for grazing and get them back into the cycle.