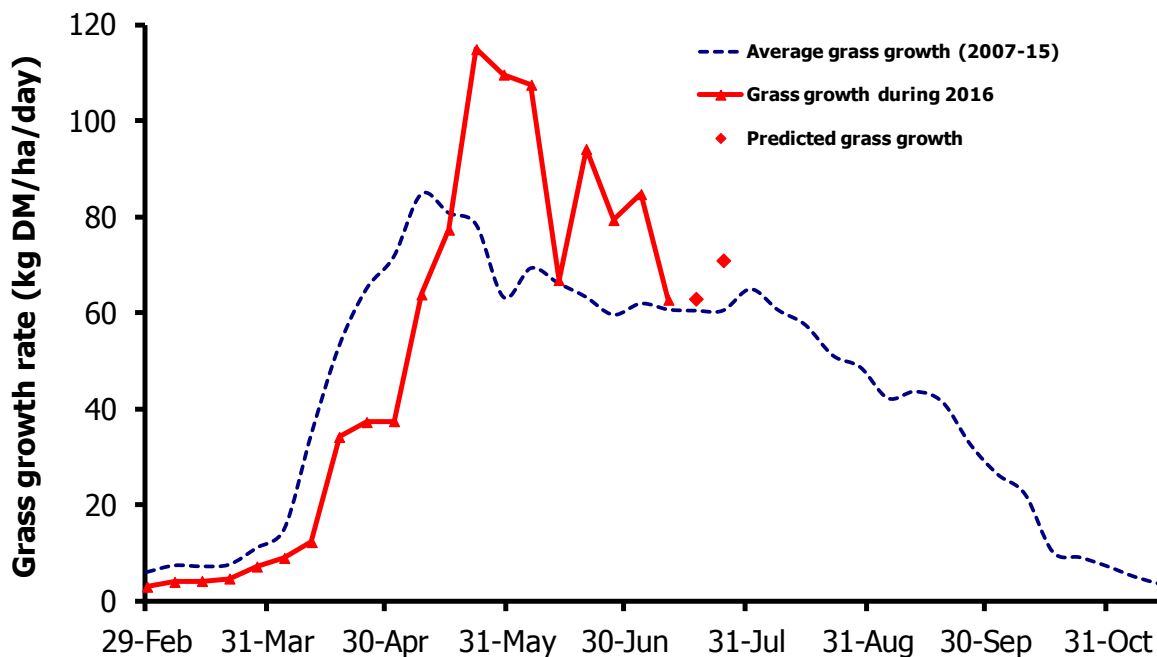


# GrassCheck

Week beginning 11 July 2016



Grass growth and quality measured from swards at Hillsborough and Greenmount

Grass Growth (kg DM/ha/day)*		
Previous 3 weeks	11 July	63
Predicted	18 July	63
	25 July	71

\* 270 kg N/ha/year applied

Grass Quality	
Dry matter (%)	15.8
ME (MJ/kg DM)	11.5
Crude protein (%)	18.5
Sugars (% DM)	14.2

## Management notes.

- Growth rate has fallen to the seasonal average and is predicted to remain close to the average for the next 2 weeks.
- Quality has improved in line with the figures from previous years.
- Recent heavy rain has led to difficult grazing conditions, particularly on heavier land and in the west. Apply extended grazing techniques as conditions dictate.
- Consider buffer feeding high quality forage where grass intakes are sub-optimal.
- Keep a close eye on cow condition. Target parlour feeding to higher yielding and thinner cows. Adjust feed levels in line with grazing conditions.
- Aim to keep up with topping, (if required) and fertiliser applications for the next grazing cycle, to maintain grass quality and quantity.