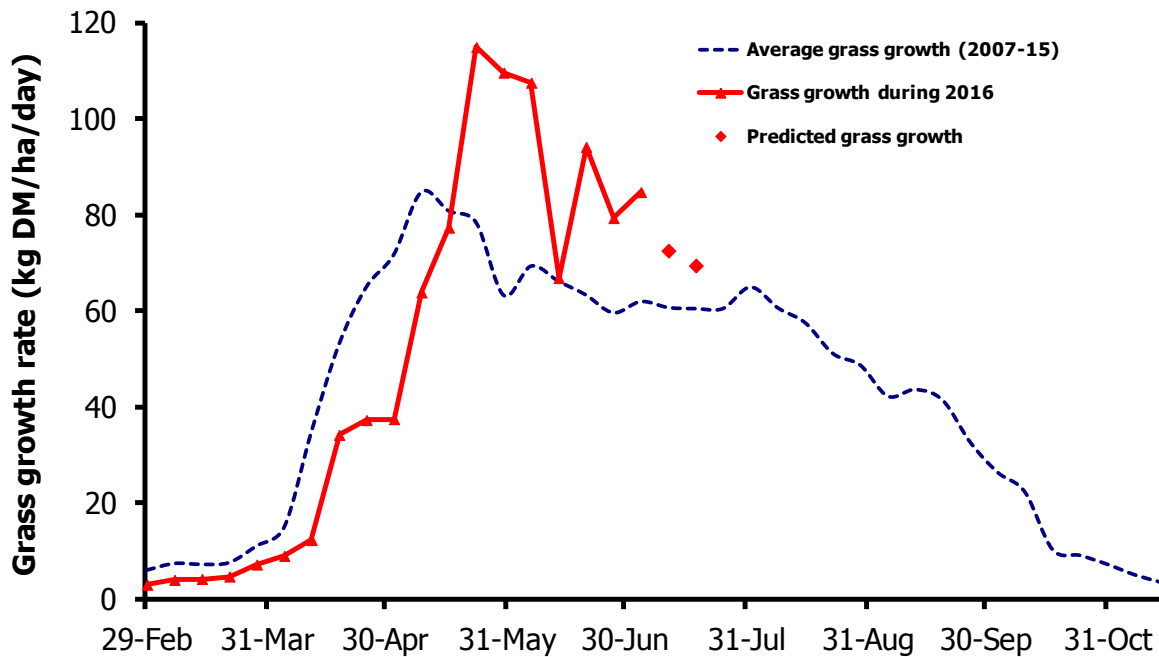


GrassCheck

Week beginning 4 July 2016



Grass growth and quality measured from swards at Hillsborough and Greenmount

Grass Growth (kg DM/ha/day)*		
Previous 3 weeks	4 July	85
Predicted	11 July	73
	18 July	70

* 270 kg N/ha/year applied

Grass Quality	
Dry matter (%)	13.9
ME (MJ/kg DM)	11.1
Crude protein (%)	15.3
Sugars (% DM)	15.0

Management notes.

- Despite cooler air temperatures, grass growth on the plots has continued above average and is predicted to remain so for the next two weeks.
- Grass quality, particularly ME, is below average for the time of year, reflecting above average growth over the past few weeks.
- Re-growths are poor on some fields not properly grazed out last time round and/or not receiving enough nitrogen fertiliser.
- Ground conditions in some areas have deteriorated due to recent heavy rain
- Applying extended grazing principles where ground conditions dictate, together with at least weekly assessment of grass quantity and quality is paramount to ensuring that you get the most from the grazing platform on your farm.