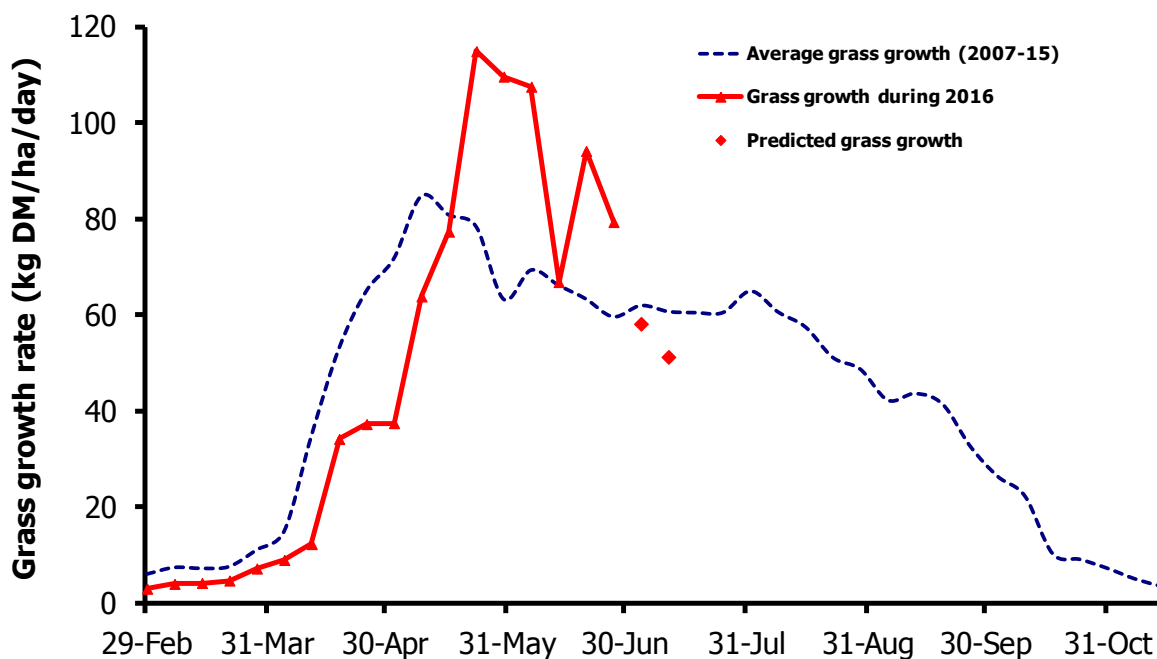


# GrassCheck

Week beginning 27 June 2016



Grass growth and quality measured from swards at Hillsborough and Greenmount

Grass Growth (kg DM/ha/day)*		
Previous 3 weeks	27 June	79
Predicted	4 July	58
	11 July	51

\* 270 kg N/ha/year applied

Grass Quality	
Dry matter (%)	15.0
ME (MJ/kg DM)	11.2
Crude protein (%)	18.5
Sugars (% DM)	12.5

## Management notes.

- Grass growth is currently well above the seasonal average, but is predicted to fall over the next two weeks, due to anticipated lower temperatures.
- Grass quality on the plots has improved, with higher ME content and also improved levels of sugars and crude protein, compared to recent weeks.
- Ensure cows are going into the correct grazing covers (2800-3000 kg/DM/Ha, 1/3 up a wellington boot), as this will encourage high intakes, while also getting swards grazed down to 5 - 6 cms, without compromising intakes.
- Be proactive and flexible in your grassland management, assess sward quality and quantity weekly, ensuring quality grass is always available for milk production.