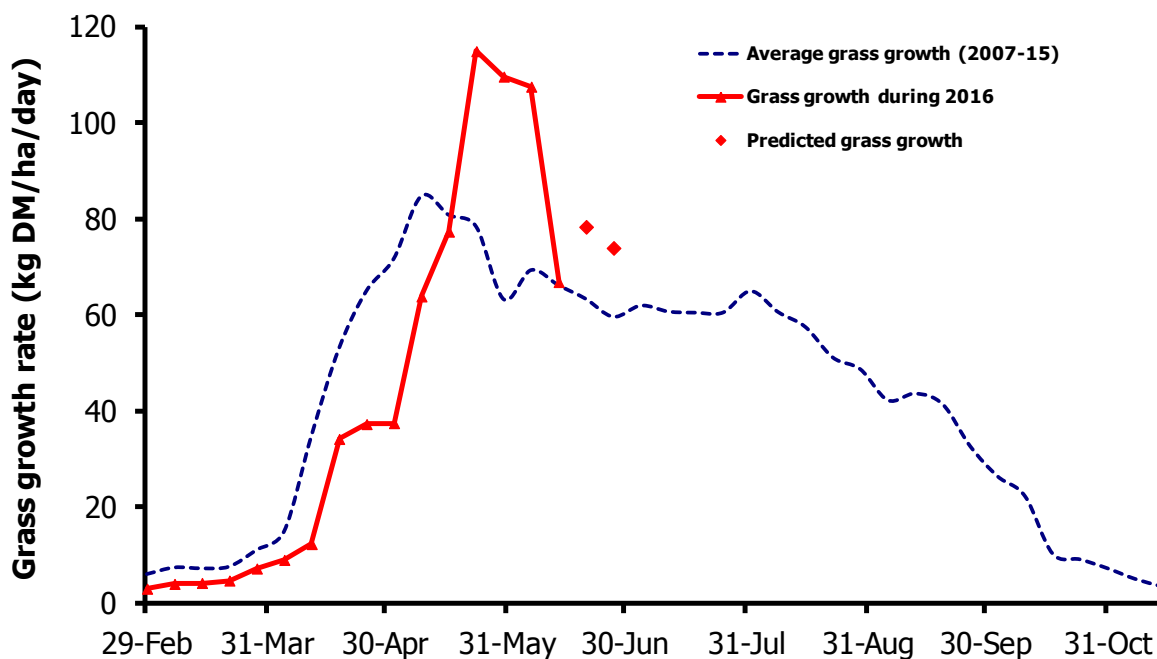


GrassCheck

Week beginning 13 June 2016



Grass growth and quality measured from swards at Hillsborough and Greenmount

Grass Growth (kg DM/ha/day)*		
Previous 3 weeks	13 June	67
Predicted	27 June	78
	20 June	74

* 270 kg N/ha/year applied

Grass Quality	
Dry matter (%)	13.8
ME (MJ/kg DM)	10.9
Crude protein (%)	18.5
Sugars (% DM)	9.4

Management notes.

- Grass growth at both sites has fallen markedly over the past week, but there was wide variation in growth between the two sites, as soil type and moisture deficit impacted some of the swards more than others. However, with the recent rain and humid conditions, growth is likely to increase, as the predictions in the Table above indicate.
- ME content is still below average, reflecting higher stem content for the time of year, even though grass growth is back to the average for June.
- Continue to assess grass quantity and quality. Many farms have quantity, but quality has suffered, with a knock-on reduction in energy intakes and subsequently reduced milk yields from grass.
- If high covers are grazed, it is essential they are topped down to 5 cm stubble.