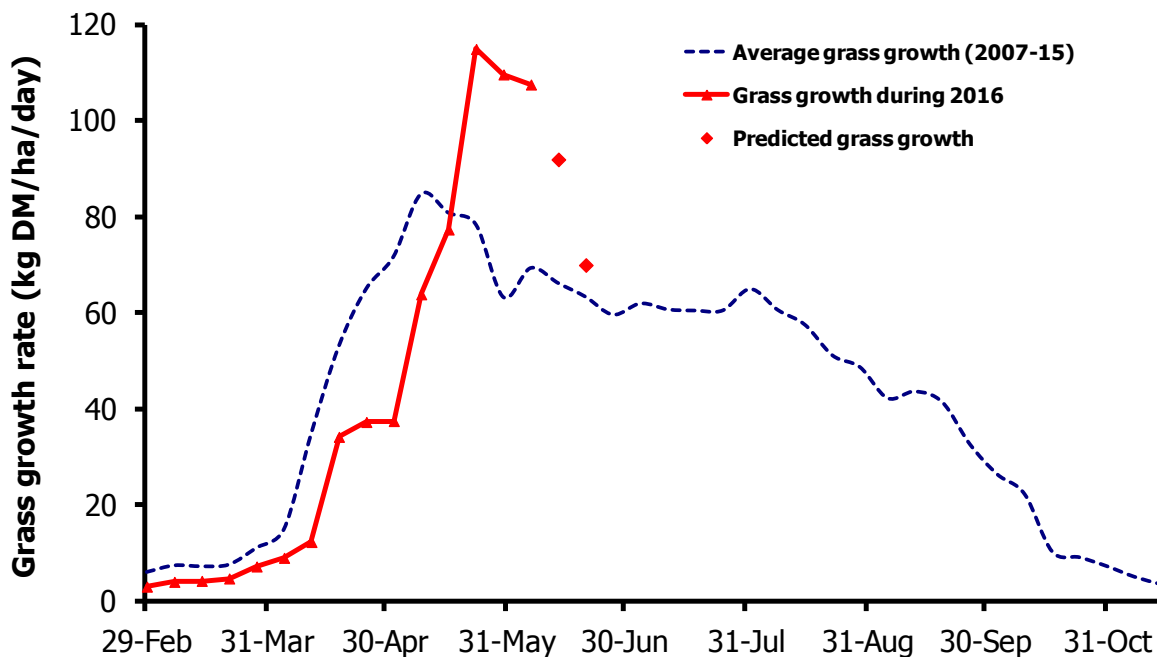


GrassCheck

Week beginning 6 June 2016



Grass growth and quality measured from swards at Hillsborough and Greenmount

Grass Growth (kg DM/ha/day)*		
Previous 3 weeks	6 June	108
Predicted	13 June	92
	20 June	70

* 270 kg N/ha/year applied

Grass Quality	
Dry matter (%)	18.1
ME (MJ/kg DM)	11.3
Crude protein (%)	16.8
Sugars (% DM)	14.7

Management notes.

- Growth has held up well, despite the recent dry spell. However, farms with light, free draining soils have suffered from lack of moisture, with lower re-growths.
- Grass quality remains below average, reflecting the high growth rates, but should improve as growth rates return to more typical values.
- It is essential to keep walking your grazing fields at least weekly, as grass covers can change very quickly, given the consistent above average growth rates.
- Where grass covers are getting beyond the ideal grazing stage (2800 - 3000 kg DM/ha, 1/3 up a wellington boot), cut this grass immediately, allowing the area back into the grazing cycle, with a quality sward available for the next grazing rotation.