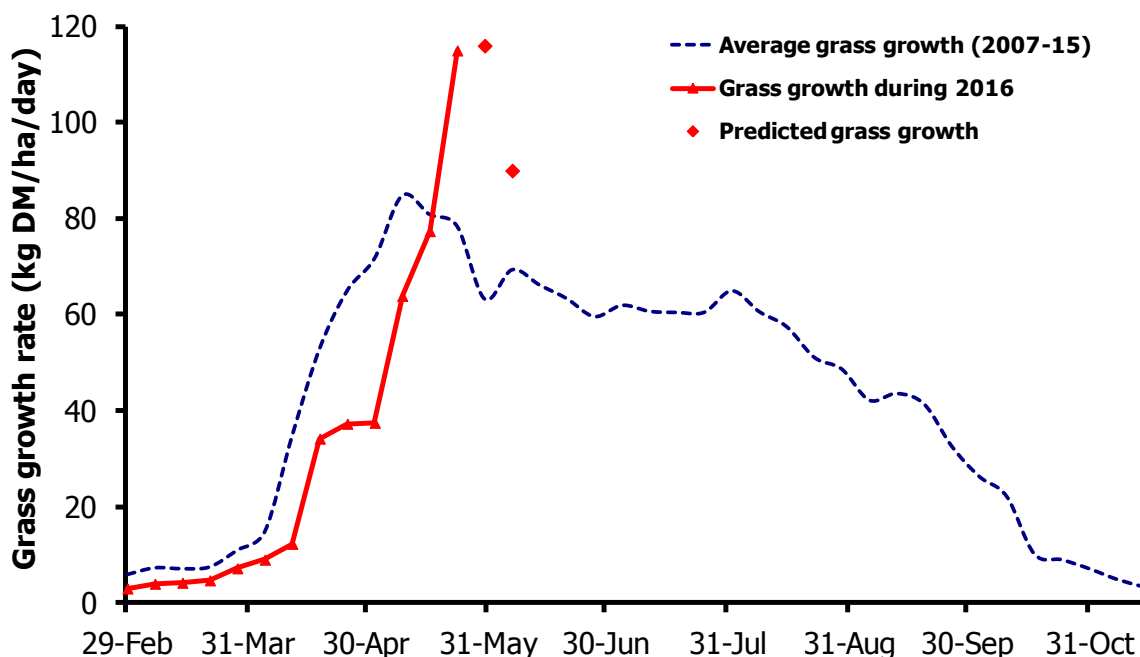


GrassCheck

Week beginning 23 May 2016



Grass growth and quality measured from swards at Hillsborough and Greenmount

Grass Growth (kg DM/ha/day)*		
Previous 3 weeks	23 May	115
Predicted	30 May	116
	6 June	91

* 270 kg N/ha/year applied

Grass Quality	
Dry matter (%)	16.2
ME (MJ/kg DM)	11.2
Crude protein (%)	15.1
Sugars (% DM)	17.9

Management notes.

- Due to the late spring the annual spring growth peak has been delayed by about 2 weeks and so growth is currently well above the seasonal average.
- High growth rates are expected to continue for at least a further 2 weeks, as growing conditions are likely to be excellent.
- Essential to walk grazing fields at least weekly to assess grass supply. Take action now with excess grass covers (over 3000 kg DM/ha) and get them back into the rotation as soon as possible.
- Ensure that grass quality is maintained, by going in at the right cover, (2800-3000 kg DM/ha) and getting swards grazed out properly, while maintaining high intakes of quality grass.