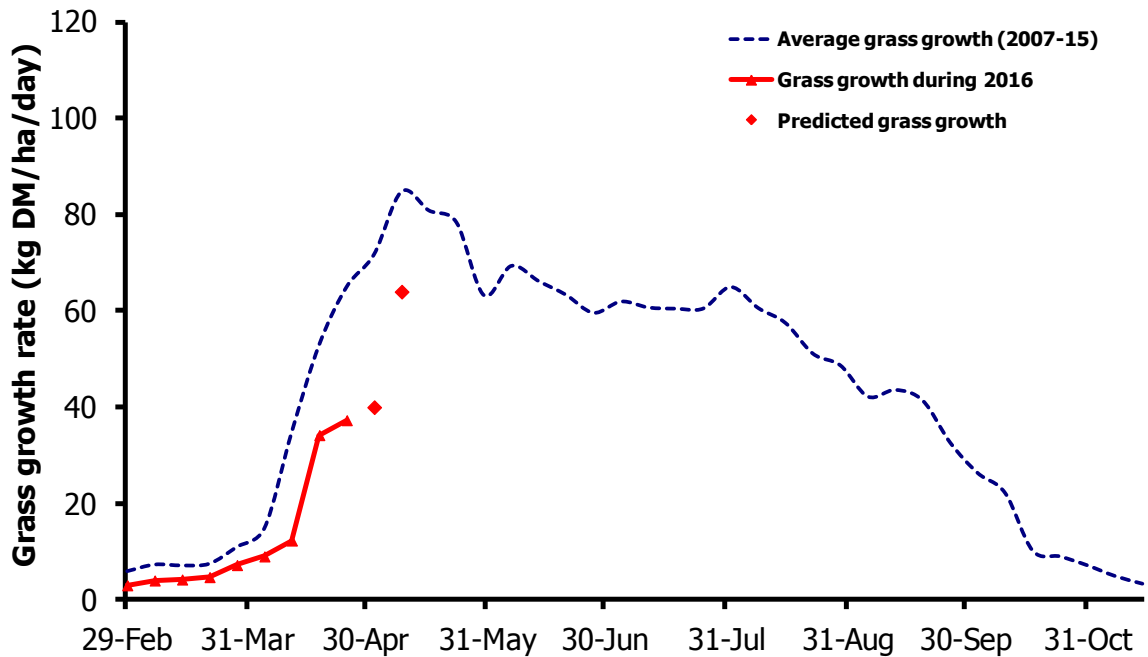


GrassCheck

Week beginning 25 April 2016



Grass growth and quality measured from swards at Hillsborough and Greenmount

Grass Growth (kg DM/ha/day)*		
Previous 3 weeks	25 Apr	37
Predicted	2 May	40
	9 May	64

* 270 kg N/ha/year applied

Grass Quality	
Dry matter (%)	19.1
ME (MJ/kg DM)	12.3
Crude protein (%)	19.3
Sugars (% DM)	17.8

Management notes.

- A few bright and warm days last week provided some excellent grazing conditions, although growth continues to remain well below average.
- The settled weather has seen many herds turned out to grass, yet grass supply remains highly variable between farms. It is vital that the farm is walked regularly to monitor how grass supply is changing and react quickly to these changes.
- For some, the late turnout has resulted in a large supply of grass now being available, and this will need careful management to ensure that the current surplus doesn't become a deficit in three to four weeks time.
- For others grass supplies remain tight, and fields that would normally be closed for silage are still being grazed to extend the rotation and reduce grass demand.