

# Northern Ireland Greenhouse Gas Emissions 2018



*Sustainability at the heart of a living, working, active landscape valued by everyone.*



Department of  
**Agriculture, Environment  
and Rural Affairs**

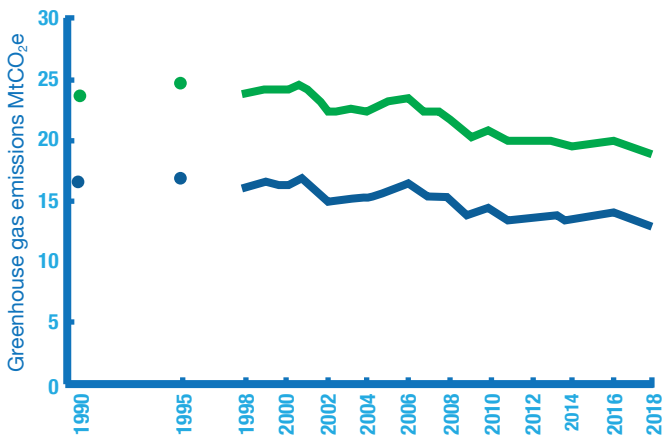
[www.daera-ni.gov.uk](http://www.daera-ni.gov.uk)



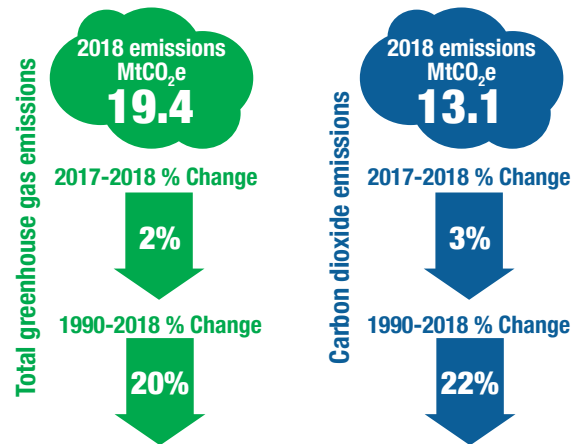
**INVESTORS  
IN PEOPLE**

# NI Greenhouse Gas Statistics 1990-2018

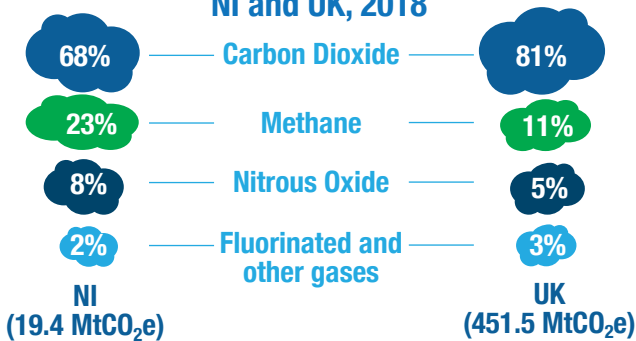
2018 NI greenhouse gas emissions have decreased by 20% since 1990



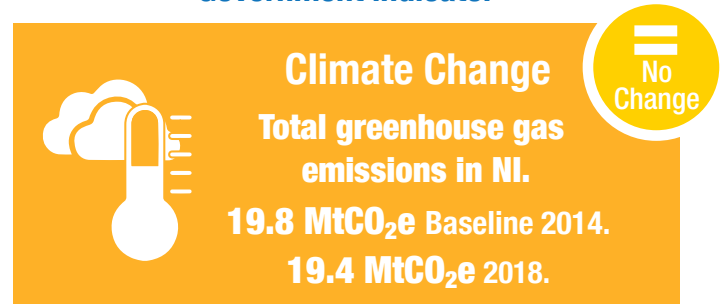
MtCO<sub>2</sub>e = million tonnes of CO<sub>2</sub> equivalent



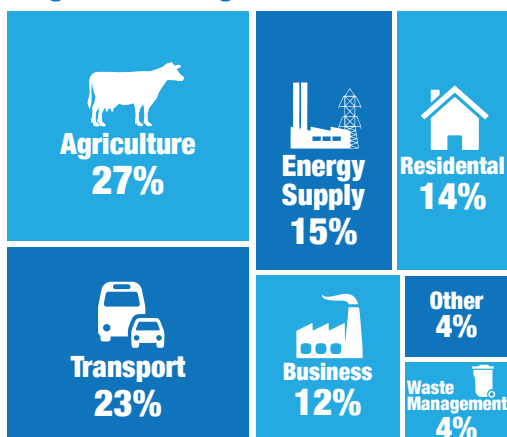
## Composition of greenhouse gas emissions (%), NI and UK, 2018



## Progress against Programme for Government indicator



## Agriculture was the largest emitting sector of NI greenhouse gas emissions in 2018



Numbers are rounded and may not add to 100.

## Energy Supply delivered the largest reduction in emissions from 1990 to 2018 (-2.4 MtCO<sub>2</sub>e)

Sector	% Change
Agriculture	1
Business	23
Energy Supply	45
Residential	26
Transport	29
Waste Management	58
Other	48

*Sustainability at the heart of a living, working, active landscape valued by everyone.*



Department of  
**Agriculture, Environment  
and Rural Affairs**

[www.daera-ni.gov.uk](http://www.daera-ni.gov.uk)



**INVESTORS  
IN PEOPLE**

# Northern Ireland greenhouse gas inventory 1990-2018

## Key points:

- In 2018, Northern Ireland's greenhouse gas emissions were estimated to be 19.4 million tonnes of carbon dioxide equivalent. This was a decrease of 2% compared with 2017.
- The longer term trend showed a decrease of 20% compared to the base year (1990).
- The largest sectors in terms of emissions in 2018 were agriculture (27%), transport (23%) and energy supply (15%). Most sectors showed a decreasing trend since the base year.
- The largest decreases, in terms of tonnes of carbon dioxide equivalent, were in the energy supply, waste management and residential sectors. These were driven by improvements in energy efficiency, fuel switching from coal to natural gas, which became available in the late 1990s, and the introduction of methane capture and oxidation systems in landfill management.
- Northern Ireland accounted for 4% of UK greenhouse gas emissions in 2018. In total, the UK reduced emissions by 43% between the base year and 2018. England and Scotland reduced emissions by 46% and 45% respectively. Wales and Northern Ireland reduced emissions by 31% and 20% respectively.

**Coverage:** Northern Ireland  
**Theme:** Agriculture and Environment  
**Frequency:** Annual  
**Reporting Period:** 1990-2018  
**Date of publication:** 16 June 2020

**URL:** <https://www.daera-ni.gov.uk/articles/northern-ireland-greenhouse-gas-inventory>

## Published by:

Statistics and Analytical Services  
Branch, DAERA,  
Room 816, Dundonald House  
Upper Newtownards Road  
Ballymiscaw  
Belfast BT4 3SB

**Statisticians:** Hugh McNickle  
Pamela McCorry

**Telephone:** 028 9054 0916

**Email:** [env.stats@daera-ni.gov.uk](mailto:env.stats@daera-ni.gov.uk)

## Contents

Introduction	5
Northern Ireland Summary	5
Emissions by Sector	7
Emissions by Gas	10
Performance towards targets	11
End user emissions	12
Uncertainty	13
Background information	14
Overview of National Communication sectors	16

## Introduction

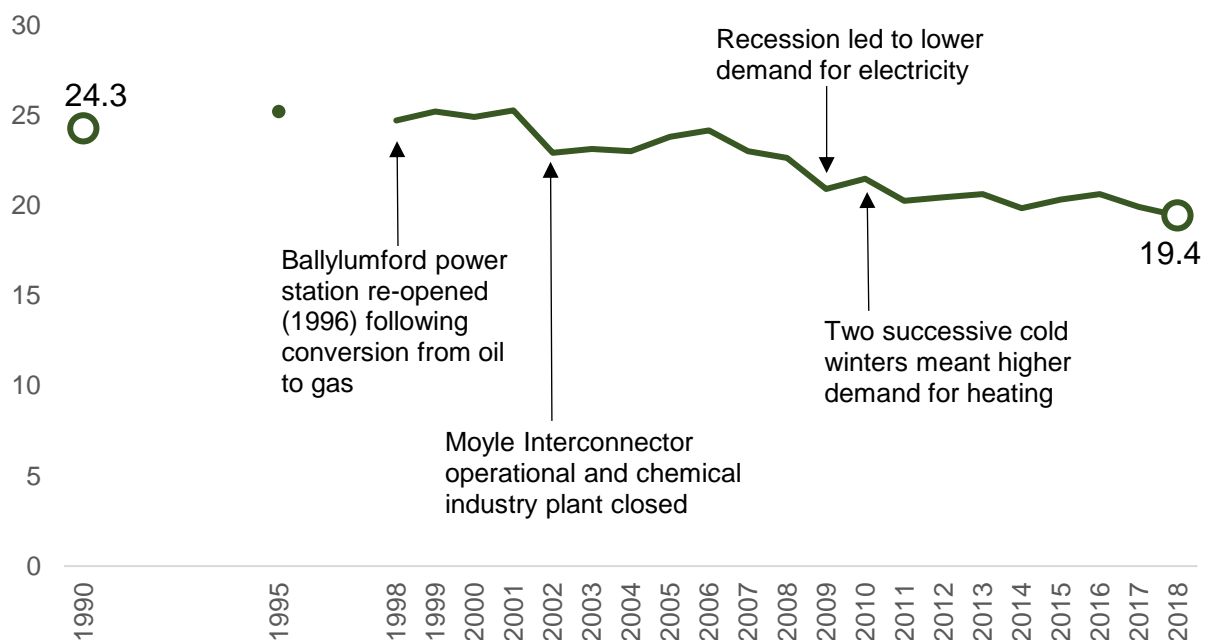
The purpose of this statistical bulletin is to summarise the latest published estimates of greenhouse gas emissions for Northern Ireland. The tables from which these estimates are sourced is available from the National Atmospheric Emissions Inventory website [Devolved Administrations - Greenhouse Gas Reports](#) .

The focus of this report is on 'by source' emissions, which are allocated to the source sector in which they occur. 'End user' emissions, where energy supply emissions are allocated to energy users, are also available.

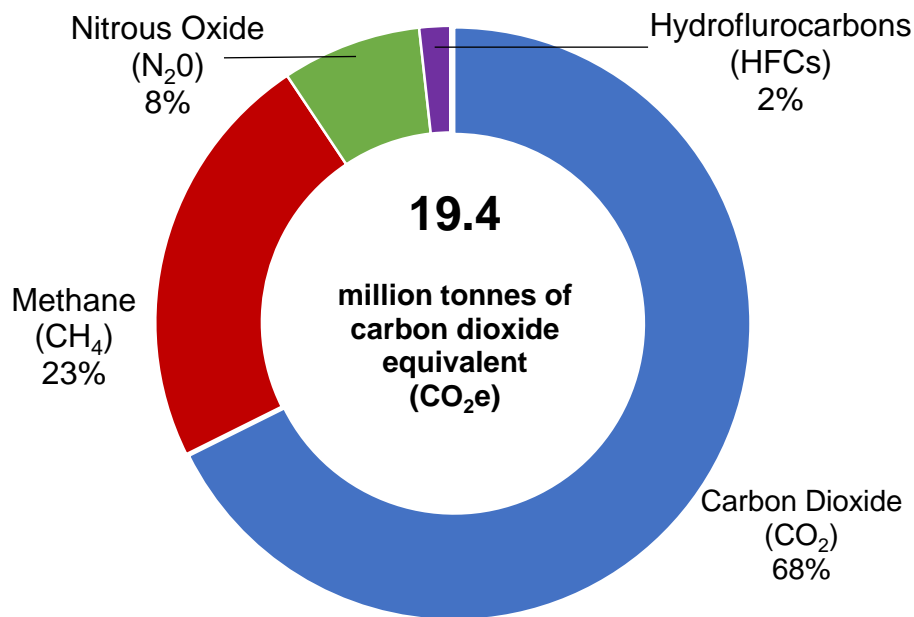
## Northern Ireland Summary

- In 2018, Northern Ireland's greenhouse gas emissions were estimated to be 19.4 million tonnes of carbon dioxide equivalent (MtCO<sub>2</sub>e). This was a decrease of 2.5% compared to 2017.
- The longer term trend showed a decrease of 20.0% compared to 24.3 MtCO<sub>2</sub>e in the base year. The base year is 1990 for carbon dioxide, methane and nitrous oxide, and 1995 for the fluorinated gases.

**Figure 1: Greenhouse gas emissions**  
Northern Ireland, 1990, 1995, 1998-2018  
MtCO<sub>2</sub>e



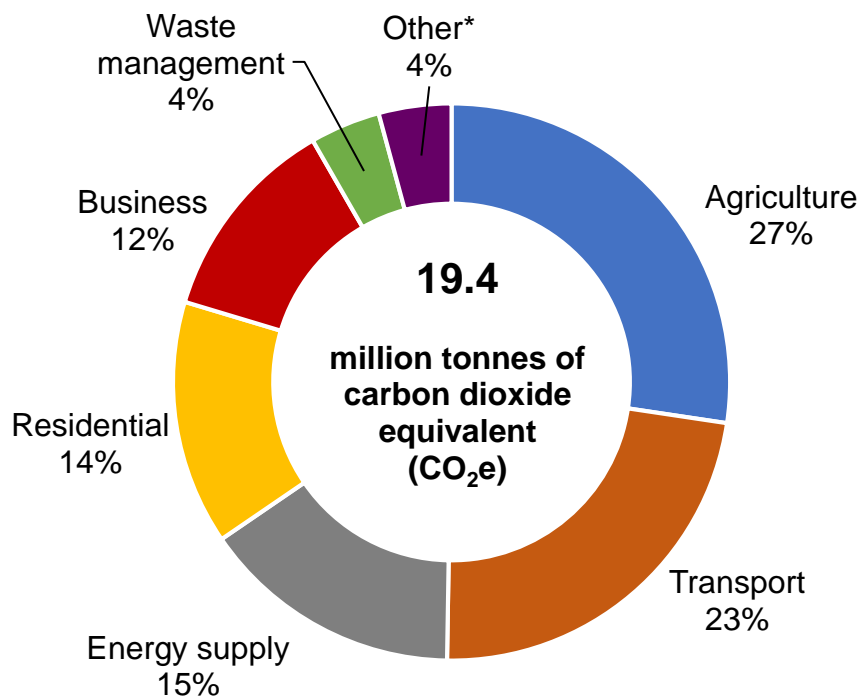
**Figure 2: Greenhouse gas emissions by gas type**  
Northern Ireland, 2018



- Carbon dioxide accounted for 68% of all greenhouse gas emissions in Northern Ireland (13.1 MtCO<sub>2</sub>e) in 2018. The proportions of each gas are shown in Figure 2.
- Northern Ireland accounted for 4.3% of total UK greenhouse gas emissions in 2018, whilst accounting for 2.8% of the UK's population and 2.2% of UK's economic output (Gross Value Added) in 2018.
- In terms of emissions per capita, Northern Ireland produced the equivalent of 10.3 tonnes of CO<sub>2</sub> per person compared with a UK figure of 6.8 tonnes of CO<sub>2</sub> per person.
- Northern Ireland contributed a total of 4.3% of the UK greenhouse gas emissions but both methane (8.7%) and nitrous oxide (7.2%) contributed proportionately higher amounts to their respective UK totals.
- Agricultural sources (27.4%) accounted for a higher proportion of emissions in Northern Ireland than other parts of the UK due to the greater relative importance of agriculture to the Northern Ireland economy. In England the proportion stood at 8.0%; for Wales it stood at 14.6% and for Scotland the proportion of emissions, due to agriculture, stood at 18.8%.

## Emissions by Sector

**Figure 3: Greenhouse gas emissions by sector (%)**  
Northern Ireland, 2018



\*Other consists of the following:

Land Use Change	(3%)
Public	(1%)
Industrial Process	(1%)

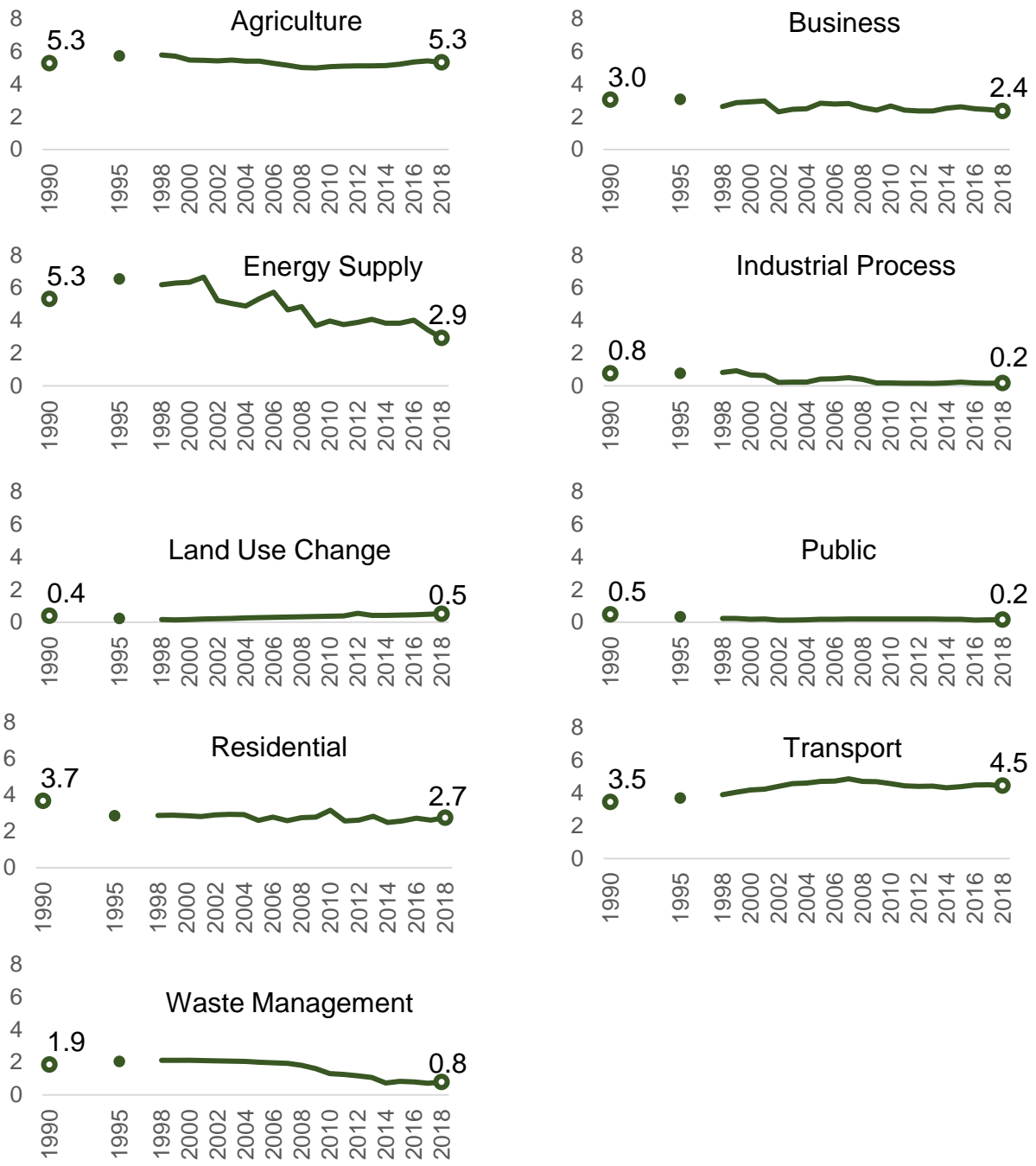
**Table 1: Total greenhouse gas emissions by sector**  
Northern Ireland; base year, 2017, 2018

Sector	Base year	2017	2018	MtCO <sub>2</sub> e	
				% change base year to 2018	% change 2017 to 2018
Agriculture	5.3	5.4	5.3	0.8	-1.7
Business	3.1	2.4	2.4	-22.9	-3.7
Energy Supply	5.3	3.4	2.9	-44.9	-14.5
Industrial Process	0.8	0.2	0.2	-77.1	5.6
Land Use Change	0.4	0.5	0.5	32.5	5.6
Public	0.5	0.1	0.2	-68.7	6.6
Residential	3.7	2.6	2.7	-25.6	5.2
Transport	3.5	4.5	4.5	28.5	-1.4
Waste Management	1.9	0.7	0.8	-57.8	9.9
<b>Total</b>	<b>24.3</b>	<b>19.9</b>	<b>19.4</b>	<b>-20.0</b>	<b>-2.5</b>

- As shown in Figure 3, the largest sectors in terms of emissions in 2018 were agriculture (27%), transport (23%) and energy supply (15%).
- Most sectors showed a decreasing trend since the base year. The largest decreases, in terms of tonnes of carbon dioxide equivalent, were in the energy supply, waste management and residential sectors. These were driven by improvements in energy efficiency, fuel switching from coal to natural gas, which became available in the late 1990s, and the introduction of methane capture and oxidation systems in landfill management.
- Between 2017 and 2018, emissions from the energy supply sector decreased by 14.5% and accounted for most of the total decrease. This is due to a reduction in coal-and gas-fired power generation in Northern Ireland.
- The transport, land use change and agriculture sectors showed higher emissions in 2018 than in the base year.
- Overall transport emissions increased by 28.5% from the base year due to growth in demand for transport, despite improvements in efficiency of vehicles. Emissions from agriculture have increased by 0.8% and are driven by increased emissions from cattle due to increased livestock numbers.
- The relatively small net contribution to emissions (2.6%) made by the land use change sector increased by 32.5% over the time period; this mainly reflects the changes in carbon stock associated with land conversions between Cropland, Grassland, Settlements and Forest land. The largest growth in emissions since 1990 is from grassland converted to settlements and cropland converted to grassland in Northern Ireland.
- Northern Ireland is the only UK region where the land use change sector acts as a net emitter of greenhouse gas emissions (+0.5 MtCO<sub>2e</sub>). England (-4.9 MtCO<sub>2e</sub>), Scotland (-5.4 MtCO<sub>2e</sub>) and Wales (-0.4 MtCO<sub>2e</sub>) can all be classified as 'sinks' due to their net effect being one that absorbs carbon.



**Figure 4: Greenhouse gas emissions by sector**  
Northern Ireland, 1990, 1995, 1998-2018  
MtCO<sub>2</sub>e



## Emissions by Gas

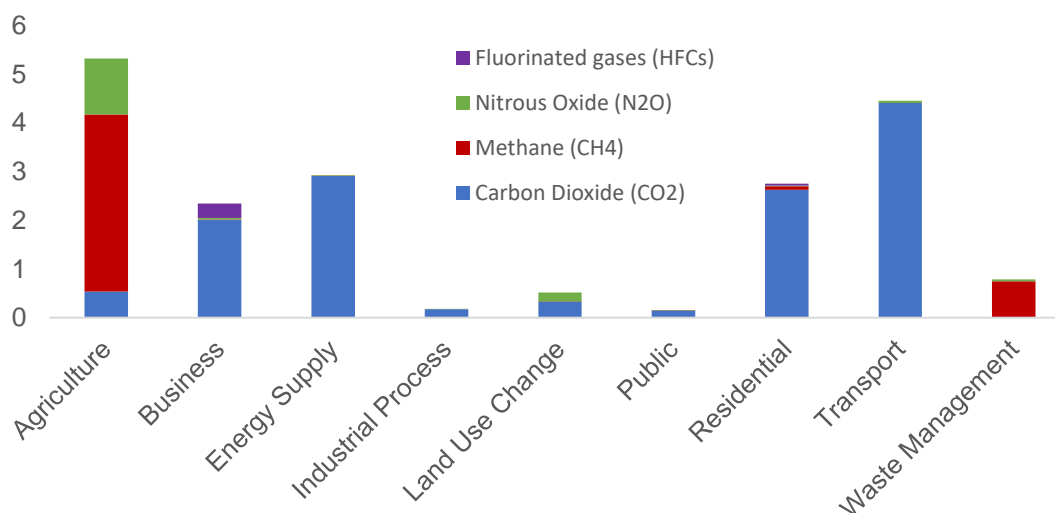
- Carbon dioxide was the most common gas emitted across all sectors except for agriculture and waste management. For the agriculture sector, methane from livestock and nitrous oxide from soils were more significant greenhouse gases than carbon dioxide. Methane from landfill was the main greenhouse gas from the waste management sector.

**Table 2: Greenhouse gas emissions by gas within sector**  
Northern Ireland; 2018

Sector	MtCO <sub>2</sub> e							All gases
	CO <sub>2</sub>	CH <sub>4</sub>	N <sub>2</sub> O	HFCs	PFCs	SF <sub>6</sub>	NF <sub>3</sub>	
Agriculture	0.5	3.6	1.2	0.0	0.0	0.0	0.0	5.3
Business	2.0	0.0	0.0	0.3	0.0	0.0	0.0	2.4
Energy Supply	2.9	0.0	0.0	0.0	0.0	0.0	0.0	2.9
Industrial Process	0.2	0.0	0.0	0.0	0.0	0.0	0.0	0.2
Land Use Change	0.3	0.0	0.2	0.0	0.0	0.0	0.0	0.5
Public	0.2	0.0	0.0	0.0	0.0	0.0	0.0	0.2
Residential	2.6	0.1	0.0	0.0	0.0	0.0	0.0	2.7
Transport	4.4	0.0	0.0	0.0	0.0	0.0	0.0	4.5
Waste Management	0.0	0.7	0.0	0.0	0.0	0.0	0.0	0.8
<b>Total</b>	<b>13.1</b>	<b>4.5</b>	<b>1.5</b>	<b>0.3</b>	<b>0.0</b>	<b>0.0</b>	<b>0.0</b>	<b>19.4</b>

**Figure 5: Individual greenhouse gas emissions within sector\* (MtCO<sub>2</sub>e)**

Northern Ireland, 2018  
MtCO<sub>2</sub>e



\*Please note that there are zero amounts of PFC and NF<sub>3</sub> as well as a minimal amount of SF<sub>6</sub> recorded in NI and, as such, these gases are not included in the chart above.

## Performance towards targets

The UK Climate Change Act 2008 (hereafter referred to as 'The Act') introduced a legally binding target to reduce GHG emissions by at least 80% below the 1990 baseline by 2050. To meet these targets, the government has set five-yearly carbon budgets which currently run until 2032.

The UK is currently in the third carbon budget period (2018 to 2022) which has a target to reduce emissions by 37% by 2020 (on 1990 levels). The fourth and fifth carbon budgets have targets of 51% by 2025 and 57% by 2030<sup>1</sup>. In 2019, The Act<sup>2</sup> was amended to require the UK to have a 100% reduction in greenhouse gas emissions by 2050 from 1990 levels, commonly referred to as the 'net zero 2050' target<sup>3</sup>.

The UK greenhouse gas inventory reports emissions on a source basis and it is these estimates that are used to assess the UK's progress against emissions reductions targets. All administrations, including NI, contribute to the UK carbon budgets. Legally-binding carbon budgets act as stepping stones towards the 2050 target and provide a pathway to meet the overall UK climate change target.

The draft Programme for Government Framework 2016-2021 contains greenhouse gas emissions as an indicator under outcome 2: we live and work sustainably – protecting the environment.

- The criteria used to report change for this indicator is **+/- 1.0 percentage points cumulatively** on an annual basis against the baseline year value in 2014, when Northern Ireland's greenhouse gas emissions were estimated to be 19.8 MtCO<sub>2e</sub>.
- A decrease in estimated emissions, compared to the PfG baseline year (2014), of greater than 1 percentage point (cumulatively) is considered a positive change whilst an increase in estimated emissions of greater than 1 percentage point (cumulatively) is considered a negative change. A change of less than 1 percentage point (cumulatively) is considered as no change.
- In 2018, Northern Ireland's greenhouse gas emissions were estimated to be 19.4 MtCO<sub>2e</sub>. This is a decrease of 2.1% since the baseline year for PfG reporting (2014) and **is considered as 'no change' for PfG reporting**.
- Given that the most recent data (2018) are for a period four years after the PfG baseline (2014), the decrease could only have been considered a 'positive change' if the fall was at least 4 percentage points.

---

<sup>1</sup> [The CCC - Carbon budgets and targets](#)

<sup>2</sup> [The Climate Change Act 2008](#)

<sup>3</sup> [Net Zero – The UK's contribution to stopping global warming/](#)

**Table 3: Progress against Programme for Government indicator**

<b>Year</b>	<b>NI GHG emissions (MtCO<sub>2</sub>e)</b>	<b>% change from 2014</b>
2014 (base year for PfG reporting)	19.8	-
2015	20.3	2.4
2016	20.6	4.0
2017	19.9	0.4
<b>2018</b>	<b>19.4</b>	<b>-2.1</b>

- The trends in greenhouse gas emissions vary across the different parts of the UK between the base year and 2018. It should be noted that the regional estimates are less certain than the overall UK estimate. Estimates for the UK are available in Tables 2 and 3 of the data tables that accompany this report.
  - UK has reduced emissions by 43%
  - Scotland has reduced emissions by 45%
  - England has reduced emissions by 46%
  - Wales has reduced emissions by 31%
  - Northern Ireland has reduced emissions by 20%
- Note that the UK greenhouse gas emissions publication uses a 1990 base year for all gases (including fluoroinated gases) which also results in a reduction of 43% by 2018. Note also that for consistency in the above list, the figure for Scotland, derived as part of the UK estimate, does not include international aviation and shipping. However the Scottish Government do include international aviation and shipping in greenhouse gas statistics produced in Scotland.

## **End user emissions**

- The end user inventory reallocates the emissions by source depending on where the end user activity occurred. For example, when reporting on a by source basis, all of the carbon dioxide produced by a power station is allocated to the energy supply sector. On an end user basis, these emissions are reallocated to the users of the electricity, such as domestic homes and industry.
- Total greenhouse gas emissions for Northern Ireland in 2018 in the end user inventory were 19.7 MtCO<sub>2</sub>e. Four sectors accounted for 90% of end user emissions in 2018. These were agriculture (28%), transport (25%), residential (19%) and business (18%).
- End user emissions do not take account of emissions “embedded” within manufactured goods and services which the UK imports and exports. Embedded emissions capture what is sometimes referred to as the “carbon footprint”. Such a calculation would be on a “consumption” basis, reporting on emissions

embedded in goods and services across international borders, and is considerably more challenging.

- Statistics on the UK's Carbon Footprint are available from the Department for Environment, Food and Rural Affairs [UK's carbon footprint](#) .

## **Uncertainty**

When using the statistics in this bulletin users should be aware of the levels of uncertainty around the published estimates. For example, the estimated reduction of 20% in Northern Ireland greenhouse gas emissions has a 95% confidence interval that ranges from 11% to 31% reduction. For more information see background notes 4 and 5.

## Background information

1. This is the eleventh release of the Northern Ireland greenhouse gas inventory statistical bulletin. It will continue to be updated annually. The data were produced by Ricardo Energy and Environment, on behalf of the Department for Business, Energy & Industrial Strategy, the Scottish Government, the Welsh Assembly Government and the Northern Ireland Department of Agriculture, Environment and Rural Affairs.
2. Each year the greenhouse gas inventory is extended and updated. The entire historical data series is revised to incorporate methodological improvements and new data. This takes into account revisions to the datasets used in its compilation. Therefore, once the latest year's inventory is published, the previous version becomes redundant and cannot be used for comparison purposes. However the latest inventory contains a single consistent time series going back to 1990 which can be used to examine trends.
3. Emissions are reported for seven greenhouse gases: carbon dioxide (CO<sub>2</sub>), methane (CH<sub>4</sub>), nitrous oxide (N<sub>2</sub>O), hydrofluorocarbons (HFCs), perfluorocarbons (PFCs), sulphur hexafluoride (SF<sub>6</sub>) and nitrogen trifluoride (NF<sub>3</sub>). Depending on their molecular weights, radiative properties and residence times in the atmosphere, each greenhouse gas has a different capacity to cause global warming. The base year is 1990 for carbon dioxide, methane and nitrous oxide, and 1995 for the fluorinated gases. The fluorinated gases are hydrofluorocarbons, perfluorocarbons, sulphur hexafluoride and nitrogen trifluoride. Emissions in this bulletin are reported according to the National Communication sectors. This is in accordance with international reporting guidelines from the United Nations Framework Convention on Climate Change (UNFCCC). Descriptions of each sector are available on page 11.
4. The greenhouse gas emission estimates are based on a wide range of data sources and sources of uncertainty include statistical differences, assumptions, proxy datasets and expert judgement. In addition, the natural variability in the processes that are being modelled introduce uncertainty. For example, carbon content of fuels and farming practices under different climatic conditions and soil types. The uncertainties are presented as confidence intervals. The width of the interval provides a measure of the accuracy of the estimate.
5. Uncertainty estimates for Northern Ireland emissions are available for the base year, the latest year (2018) and for the percentage change between the two years. For the base year, the 95% confidence interval is  $\pm 10\%$ , and for 2018 it is  $\pm 7\%$ . For the percentage reduction between the base year and 2018, the 95% confidence interval ranges from 11% to 31%, with a central estimate of 20%. There remains greater uncertainty around emissions in Northern Ireland compared to other parts of the United Kingdom due to the relative importance of methane and nitrous oxide emissions in the agriculture sector. Emissions of this gas are more difficult to estimate than carbon dioxide, and the agriculture sector makes up a larger share of Northern Ireland's emissions than in other parts of the UK.
6. Official Statistics are produced to a high professional standard. They undergo regular quality assurance reviews to ensure that they meet customer needs. They are produced free from any political interference. As we want to engage with users of our

statistics, we invite you to feedback your comments on this publication. Contact details are available on the front cover.

7. The UK greenhouse gas inventory National Statistics user guide provides a simple guide to the origins and use of data in the compilation of the UK Greenhouse Gas Inventory. This guide can be accessed through the Department for Business, Energy & Industrial Strategy website [An introduction to the UK's greenhouse gas inventory](#) .

## Overview of National Communication sectors

Sector	Description
Energy supply	Emissions are predominantly from power stations but also coal mining, oil refineries and other fuel production. Emissions are significantly affected by abatement technology at power stations and the type of fuel being produced or combusted.
Transport	Includes road transport, domestic shipping and aviation, and aircraft support vehicles. Road transport is the most significant source therefore emissions are affected by vehicle efficiency, distance travelled and number of vehicles.
Residential	Includes fuel combustion for heating, cooking, garden machinery, gases released from aerosols and inhalers, and emissions released from the breakdown of products such as detergents. Emissions are affected by energy efficiency, heating and hot water demands, and the fuel type for domestic combustion.
Business	Includes emissions from stationary combustion in the industrial and commercial sectors, industrial off-road machinery, and refrigeration and air conditioning.
Public	Includes emissions from fuel combustion in public sector buildings (e.g. public administration, defence, education and health and social work). Emissions are predominantly affected by fuel type.
Industrial process	Includes all emissions from industry except fuel combustion and therefore includes chemical and metal production, and mineral products (e.g. cement and lime). Emissions are significantly affected by abatement technology.
Agriculture	Includes emissions from livestock, agricultural soils, stationary combustion, and off-road machinery. Emissions are affected by the number of livestock, the quantity of fertiliser applied to land, and the intensity of activity.
Land use change	This covers sinks and sources of emissions from land use, land use change and forestry. Sinks remove GHGs from the atmosphere whilst sources emit GHGs. Emissions are affected by deforestation rates and land management.
Waste management	Emissions include those from waste disposed at landfills, wastewater treatment, and waste incineration. Emissions are affected by regulation of landfills and the proportion of waste that is recycled.



Policy, Economics and Statistics Division  
Department of Agriculture, Environment and Rural Affairs  
Dundonald House  
Upper Newtownards Road  
Ballymiscaw  
BELFAST BT4 3SB



Department of  
**Agriculture, Environment  
and Rural Affairs**

[www.daera-ni.gov.uk](http://www.daera-ni.gov.uk)



**INVESTORS  
IN PEOPLE**