



DfC

Department
for Communities

www.communities-ni.gov.uk



Albert Street & Cullingtree Road Environmental Improvement Scheme

Community Consultation

Maureen Sheehan Centre

Wednesday 25 October 2017 between 10am and 8pm

Introduction

The Department for Communities (DfC) is developing design proposals for potential Public Realm Environmental Improvements along Albert Street and Cullingtree Road. The proposed scheme extends from the junction of Albert Street and Divis St to the end of Albert St at the Westlink Backpath, and along the full length of Cullingtree Road, and incorporating St Peters Close. It intends to submit a planning application later this year, and this community consultation seeks to establish the views and opinions of the community, to assist in the preparation of this planning application.

Proposed Improvements

The primary focus of the proposals is to enhance the public realm along Albert Street and Cullingtree Road, by introducing a high quality, cohesive appearance to the streetscape. It aims to create a welcoming sense of arrival to the Albert Street area, by introducing a distinctive style and character to the area, using high quality materials and a consistent approach.

Proposals include:

- Resurfacing of existing footpaths with natural stone and granite aggregate kerbs;
- New tree planting, street lighting columns, railings and walls;
- Improvements to the junction of Albert St and Servia St.
- Improvements to pedestrian crossings, on-street parking and speed control ramps.

The extent of the scheme is shown on Figure 1 and a snapshot of the proposals for three key areas have been provided: 1: Maureen Sheehan Centre & St Peters Close, 2: Junction of Albert St & Servia St, 3: Junction of Albert St & Cullingtree Road.

Current Status

DfC is hoping to submit a planning application to Belfast City Council later this year. This consultation seeks to gather the views of all stakeholders, including community groups, local residents, local businesses, and members of the public, on the draft proposals. There are several ways to view and comment on the draft proposals, including a manned public consultation event, unmanned exhibition displays, the DfC website as well as via email. Feedback forms will be available at each venue and online.

There will be an unmanned exhibition displays of the draft proposals at the following locations from 9 October to 10 November 2017:

- Maureen Sheehan Centre, Albert Street

There will be an opportunity to engage directly with representatives of DfC and the project team at our staffed public event in:

- Maureen Sheehan Centre: Wednesday 25 October 2017 between 10am and 8pm

The draft proposals can be viewed on the DfC website, at the following link from 9 October 2017:

www.communities-ni.gov.uk/consultations/albert-street-public-realm-consultation

We would welcome your views and comments on the draft proposals and invite you to submit your comments to our team on the feedback form provided. Alternatively, you can complete a feedback form online at the above link or email the project team at: PACC@mcadamdesign.co.uk

It is important to note that any comments you make to us during this consultation process are not representations to the Planning Authority and do not affect your statutory rights to make further representations to the Council whenever the planning application has been submitted.

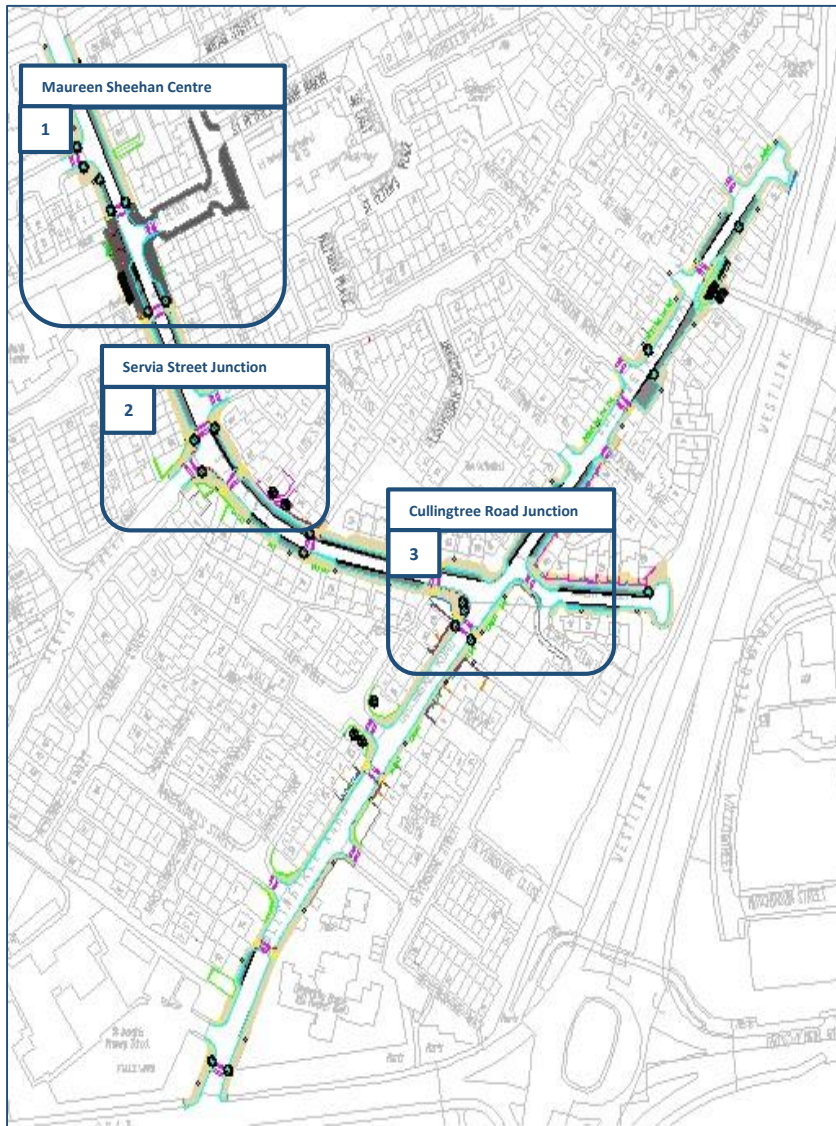
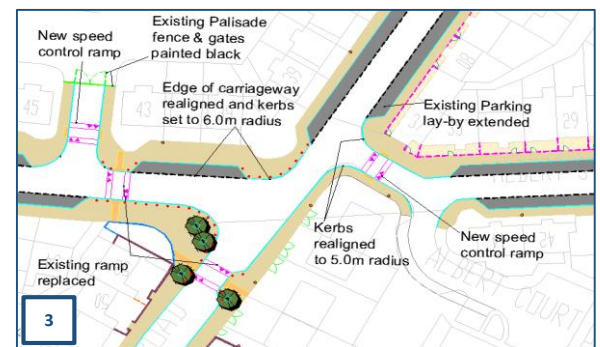
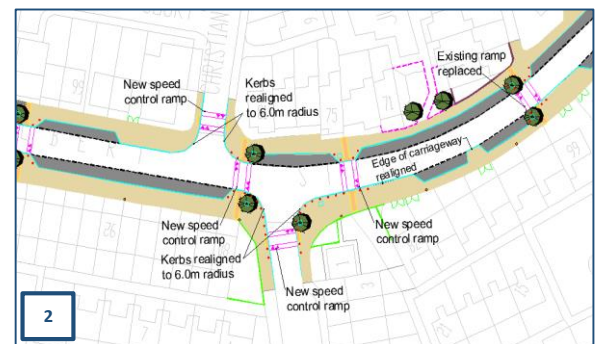
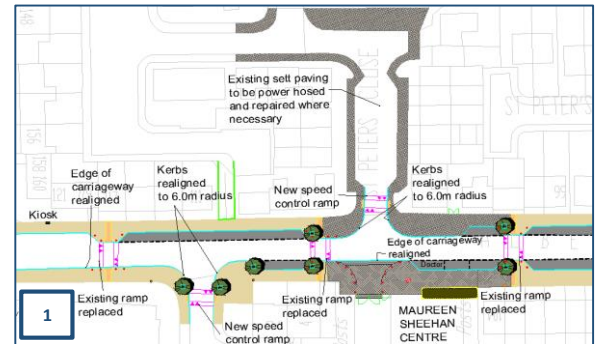
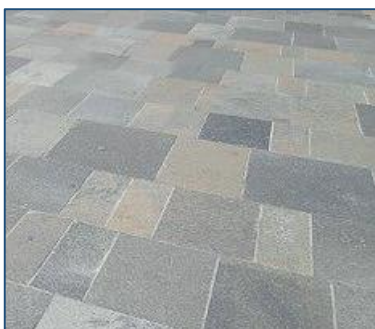


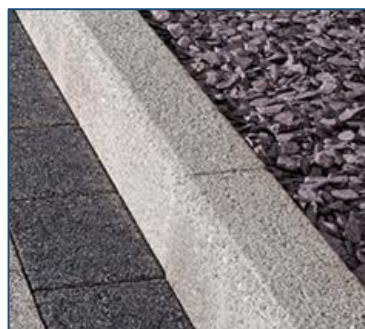
FIGURE 1



The Proposed Materials Include:



Natural Limestone Paving



Granite Terrakerbs



Tree Planting



Irish Limestone Banding

COMMUNITY CONSULTATION EVENT WILL BE HELD AT THE:

Maureen Sheehan Centre

Wednesday 25 October 2017 between 10am and 8pm



Exhibition displays will be located at Maureen Sheehan Centre from Monday 9 October to Friday 10 November 2017

Next Steps

The feedback received during this consultation will be considered in the final design and submitted with the planning application.

The implementation and delivery of the project will be subject to funding, economic appraisal and the availability of public resources.