

Boundary Commission
for Northern Ireland



REVISED PROPOSALS REPORT

Boundary Commission for Northern Ireland

The Bungalow
Stormont House
Stormont Estate
Belfast
BT4 3SH

028 9052 7821

review@boundarycommission.org.uk

www.boundarycommission.org.uk

 @BCNI2018



2018 Review of Parliamentary Constituencies

JANUARY 2018

2018 Review of Parliamentary Constituencies

REVISED PROPOSALS REPORT

January 2018

2018 Review of Parliamentary Constituencies

REVISED PROPOSALS REPORT

CONTENTS

CHAPTER	Page
1. Introduction	5
The Commission	5
Legislation	5
Revised Proposals	5
Consultations	5
How to respond	6
2. The Legislation	8
Rule 5	8
Rule 7	8
3. The 2018 Review	10
Commencement	10
Constituency modelling	10
Provisional Proposals	10
Revised Proposals	11
Final Recommendations	11
4. Major Themes	12
Changes to existing constituencies	12
Towns and their hinterlands	13
Glengormley/Newtownabbey	13
Belfast	14
Issues beyond our remit	16

5.	Names and Designations	17
6.	The Revised Proposals	18
	Revised Proposals Maps	19
	Revised Proposals by Constituency	
-	Belfast East	22
-	Belfast North	24
-	Belfast South	26
-	Belfast West	28
-	Causeway	30
-	East Antrim	32
-	Fermanagh and South Tyrone	34
-	Foyle	36
-	Mid Antrim	38
-	Mid Down	40
-	Mid Ulster	42
-	Newry and Armagh	44
-	North Down	46
-	South Antrim	48
-	South Down	50
-	Upper Bann	52
-	West Tyrone	54
 APPENDICES		
	Appendix 1: Boundary Commission for Northern Ireland	56
	Appendix 2: Schedule 2, Parliamentary Constituencies Act 1986	57
	Appendix 3: List of respondents	62

Chapter 1

Introduction

The Commission

- 1.1 The Boundary Commission for Northern Ireland is an independent non-departmental body constituted under the Parliamentary Constituencies Act 1986 as amended by the Boundary Commissions Act 1992 and the Parliamentary Voting System and Constituencies Act 2011. The legislation sets out the procedure to be followed by the Commission when formulating its proposals. The membership of the Commission is set out in Appendix 1.
- 1.2 There are four Boundary Commissions in the United Kingdom: one each for England, Northern Ireland, Scotland and Wales. The Boundary Commission for Northern Ireland is responsible for keeping the representation of Northern Ireland in the House of Commons under continuous review and is required to submit a report to the Secretary of State for Northern Ireland every five years showing the constituencies into which Northern Ireland should be divided and proposing the names by which they should be known.

Legislation

- 1.3 The Parliamentary Constituencies Act 1986 and the associated amending legislation can be accessed on our website at www.boundarycommission.org.uk. Chapter 2 explains how the legislation guides the Review process. The relevant extract from the Act is at Appendix 2.

Revised Proposals

- 1.4 We have determined these Revised Proposals after careful consideration of all the evidence collected during the initial and secondary consultations.
- 1.5 It is our responsibility to delineate an arrangement of constituencies that has the best overall fit for the whole of Northern Ireland. To do this, we have had to balance out the competing criteria but at all times working within the requirements set out in legislation.

Consultations

- 1.6 We have been greatly assisted in our work by the quality and scope of the submissions received during the consultations and the valuable information gathered at the public hearings. We encourage all those with an interest in the outcome of the Review to participate in the Revised Proposals consultation.

- 1.7 We have introduced an online consultation portal and established a social media presence to encourage participation in the Review. There has been an increase in responses received to date compared with previous Reviews. This has been a welcome development and something we are keen to build on.
- 1.8 The consultation on the Revised Proposals will be the last opportunity to contribute to the 2018 Review.

How to respond

- 1.9 Publication of this document signals the start of an eight week consultation on our Revised Proposals. The consultation starts on 30 January 2018 and ends on 26 March 2018.
- 1.10 Anyone wishing to make representations about these Revised Proposals should do so in writing by 26 March 2018. You can do this in three ways:

Online

- 1.11 You can submit your representation(s) online at our dedicated consultation portal **www.bcni2018.uk**. Here you can upload documents, spreadsheets and maps in support of any alternative proposals. The online consultation should be read alongside this document and the supporting maps.

By email

- 1.12 You can email your response to review@boundarycommission.org.uk

By post

- 1.13 You can write to the Secretary to the Boundary Commission:

Eamonn McConville
Secretary to the Boundary Commission for Northern Ireland
The Bungalow
Stormont House
Stormont Estate
Belfast BT4 3SH

- 1.14 If you have any queries about the Review or how to participate in the consultation process, you can find out more at our website - **www.boundarycommission.org.uk** or by telephoning the Commission's office at 028 9052 7821.

- 1.15 We normally only accept representations in writing, subject to the requirements of the Disability Discrimination Act 1995.
- 1.16 We will not agree to requests by individuals or groups to meet.
- 1.17 We will publish the representations we receive on our website in due course. Before publication we will remove personal contact information from representations submitted by individuals.

Chapter 2

The Legislation

2.1 Schedule 2 of the Parliamentary Constituencies Act 1986 (as amended) reduces the number of constituencies from 650 to 600; provides a formula for their allocation between the four regions of the UK (after four “protected constituencies” have been removed from the equation); and, subject to Rule 7, requires the Boundary Commissions to delineate constituencies with electorates within 5% of the UK electoral quota (Rule 2). For the 2018 Review, this provides a range of between 71,031 and 78,507 electors.

Rule 5

2.2 Rule 5(1) states that Boundary Commissions may take a number of discretionary factors into account provided this does not prevent them achieving the required reduction in the number of seats and the statutory range. For Northern Ireland these are:

- a. special geographical considerations including the size, shape and accessibility of a constituency;
- b. local government ward boundaries as they were on the most recent ordinary council election day before 1 December 2015 (i.e. on 22 May 2014);
- c. boundaries of existing constituencies; and
- d. any local ties that would be broken by changes in constituencies.

2.3 We are constrained in the extent to which we can take discretionary factors into consideration because of the overriding requirement to fit within the quota range. The legislation does not prioritise any of the discretionary factors.

Rule 7

2.4 Rule 7 allows us to define constituencies with electorates which vary by more than 5% from the quota, when certain conditions exist.

2.5 The first condition relates to a calculation based on the electorate of Northern Ireland and the UK electoral quota. For the 2018 Review, this condition is met.

2.6 The second condition states that Rule 7 may be applied if the Commission considers that the application of Rule 2 would “unreasonably impair their ability to take into account the (discretionary) factors set out in Rule 5(1)” or their ability to submit their recommendations on time.

- 2.7 If both prescribed conditions are engaged, the Commission could propose one or more constituencies of fewer than 71,031 electors, provided that the number is not less than 69,403.
- 2.8 We decided not to use Rule 7 in developing our Provisional Proposals. We took the view that, under the second condition, we were required to test a range of possible constituency arrangements before we could justifiably conclude that our ability to take account of the discretionary factors had been unreasonably impaired.
- 2.9 The strength and depth of submissions received during the consultations has persuaded us that the conditions for engaging Rule 7 have been met.

Chapter 3

The 2018 Review

Commencement

- 3.1 We announced the start of the 2018 Review on 24 February 2016, following the publication of the UK electoral registers for 1 December 2015 and agreement on the allocation of the 600 constituencies to the four parts of the United Kingdom.

Constituency modelling

- 3.2 In preparing our Provisional Proposals, we modelled a series of 17-seat constituency options. In accordance with precedent, we used local government wards as the building blocks. The resulting constituencies were all within the 5% UK quota range and none required the use of Rule 7.

Provisional Proposals

The initial consultation period

- 3.3 We published our Provisional Proposals on 6 September 2016 for a 12-week consultation period and provided an online consultation tool to facilitate responses. Four public hearings were held during October 2016 in Ballymena, Omagh, Belfast and Portadown. These were chaired by District Judges. We wish to record our thanks to all of them for the professional manner in which they discharged this duty.
- 3.4 In total, 55 written representations were received. There were 116 attendees at the public hearings, during which 34 oral representations were made. We are grateful to all those who made representations at this stage. These can be found on our website.

Secondary consultation period

- 3.5 On 5 September 2017, we published the written representations received and transcripts of the public hearings from the initial consultation for a four week consultation period. 39 written responses were received and these too are available on our website.
- 3.6 A list of respondents to the consultations can be found at Appendix 3.

Revised Proposals

- 3.7 We have carefully considered all the representations received during the consultations, including those made at the public hearings. As a result, we have decided to publish these Revised Proposals for further consultation. The revisions address the major themes as summarised in Chapter 4. The proposed constituencies are detailed in Chapter 6.
- 3.8 The consultation period for the Revised Proposals will run from 30 January 2018 to 26 March 2018. There will be no further public hearings.
- 3.9 The Revised Proposals can be viewed on our website and on the consultation portal **www.bcni2018.uk**. They can also be viewed in hard copy at our designated public display points, details of which can be found on our website.
- 3.10 We will publish the representations received during this stage of consultation on our website for information in due course. The legislation does not provide for a period to comment on them. Before publication we will remove personal contact information from representations submitted by individuals.

Final Recommendations

- 3.11 At the conclusion of the Revised Proposals consultation we will consider all further representations and decide whether to adjust our Proposals before producing Final Recommendations. In accordance with the legislation, these will not be subject to further consultation and will be submitted to the Secretary of State for Northern Ireland during September 2018.
- 3.12 Information about what the Government and Parliament have to do to implement the recommendations is set out in our Guide to the 2018 Review on our website.

Chapter 4

Major Themes

- 4.1 The following paragraphs identify the major issues raised during the two consultations and explain how we have addressed them in developing these Revised Proposals.

Changes to existing constituencies

- 4.2 Many respondents argued that the Provisional Proposals failed to respect existing constituency boundaries and there was a strong overall consensus that the changes should be less radical. Some suggested that a specific constituency should remain unaltered, although few considered the consequences of this for other constituencies.
- 4.3 Fermanagh and South Tyrone came in for particular attention. Eight composite submissions proposed that its current boundary should be retained as far as possible, allowing for the changes resulting from the 2012 revision of local government ward boundaries. This position was supported by a further 10 written responses and by statements at the public hearings. The main points included: respect for the existing constituency boundary; the local ties which run along the A4 corridor; and the value of keeping Dungannon united with its hinterland.
- 4.4 The DUP and UUP each provided data on 'unmoved electors' to demonstrate that their alternative proposals generated less disruption than our Provisional Proposals.

Consideration

- 4.5 The statutory requirement to reduce the number of constituencies in Northern Ireland by one; the tighter quota range; and the new ward boundaries, all meant that significant change to several existing constituencies was inevitable. However, some of the alternative proposals submitted to us have shown that it is possible to delineate viable regional models which require fewer changes overall. With regards to Fermanagh and South Tyrone in particular, respondents provided a strong rationale supported by local knowledge to create a persuasive case.

Conclusion

- 4.6 In producing these Revised Proposals, we have significantly reduced the changes required to existing constituencies. Fermanagh and South Tyrone is returned back to its current boundaries, except for the slight adjustments required to accommodate the new ward boundaries.
- 4.7 By way of comparison, we applied the same methodology as in paragraph 4.4 to our Revised Proposals, resulting in a more favourable outcome: 84.63% of unmoved electors compared with 84.28% for the UUP's model and 82.84% for the DUP's.

Towns and their hinterlands

- 4.8 Many respondents called for natural hinterlands to be retained around key towns across Northern Ireland. All of the main political parties made this point as did Antrim and Newtownabbey Borough Council and Mid Ulster District Council. 14 people made similar comments at the public hearings. They referred to the need to protect local ties; the identification of rural villages with their associated towns; and the need to avoid locating rural towns on the edges of constituencies.

Consideration

- 4.9 We were impressed by the arguments put forward in submissions on this point. Respondents provided strong reasons and a wealth of local detail highlighting in particular Coleraine, Ballymoney, Ballymena and Dungannon.
- 4.10 Given the settlement pattern in Northern Ireland, with many of the electorate concentrated in sizeable towns surrounded by rural hinterlands, it is inevitable that some constituency boundaries will run close to the edges of towns: for example, under the existing pattern Newry sits at the edge of Newry and Armagh constituency. However, the consultation responses showed us that it was possible to produce a more compliant overall solution than our Provisional Proposals.

Conclusion

- 4.11 These Revised Proposals significantly improve the retention of hinterlands around key rural towns.

Glengormley/Newtownabbey

- 4.12 All the composite responses contained alternative proposals for the Glengormley/Newtownabbey area. There was some criticism of the proposed division of the area across four constituencies. Respondents called for links with Belfast North to be maintained, citing breaks in local ties that would result from our Provisional Proposals.

Consideration

- 4.13 Respondents provided solid arguments in support of a better arrangement. However, there was no clear consensus in favour of any one alternative and many respondents did not take into account the ripple effects of their proposals. Given the continuity of the built-up area from Belfast into Newtownabbey, it is inevitable that at least one constituency boundary will run through a densely populated neighbourhood here.

Conclusion

- 4.14 We have tested a range of alternative boundary lines between Belfast North and the adjacent constituencies to the north and west. There is no perfect solution. However, these Revised Proposals take account of the consultation responses and improve on our Provisional Proposals within the constraints of the legislation.

Belfast

- 4.15 In preparing our Provisional Proposals we tested both three-seat and four-seat options for Belfast. At the time we took the view that the most compliant of our three-seat options produced the best overall arrangement for Northern Ireland.
- 4.16 In developing that model we took account of the Belfast City Council boundary as one tangible instance of local ties, including local government representation, environmental, community and leisure services.
- 4.17 Of the consultation responses which considered the whole of Northern Ireland, the Alliance Party and David McWhinney argued for a three-seat Belfast on the basis that four seats would spread Belfast's constituency boundaries too far into the city's suburbs.
- 4.18 Other respondents who opted for a three-seat Belfast, including the UUP, accepted our Provisional Proposals but with some reservations.
- 4.19 Four of the composite submissions supported a four-seat Belfast, namely the DUP, the SDLP, Dr Nicholas Whyte and Dr Alasdair McDonnell. Dr Whyte changed his mind from a three to a four-seat Belfast in his secondary consultation response.
- 4.20 Many respondents advanced strong and detailed arguments for the retention of Dundonald, Newtownabbey/Glengormley and Newtownbreda/Carryduff within Belfast constituencies.
- 4.21 The DUP noted that the Commission in previous Reviews had decided to expand the boundaries of Belfast rather than reducing the number of seats. They argued that this was still necessary to avoid cutting ties with the city, which families who have moved to the suburbs still retain. They noted that Belfast has had four constituencies continuously since 1922 and argued that moving to a three-seat Belfast would undermine the capital city's social, economic and cultural development.
- 4.22 In his secondary consultation response, Dr Whyte explained why he had changed his position. He gave three reasons: the priority that should be given to existing constituency boundaries; the strength of local feeling as expressed through the consultation; and the realisation, also from the consultation, that it is possible to construct viable patterns for the region which retain a four-seat Belfast.

- 4.23 The SDLP and Dr McDonnell referred to the precedent established by previous Reviews for a gradual expansion of the Belfast constituency boundaries to recognise the links that connect people to the city. Like the DUP, they also expressed concern over the diminution of the city's standing as the region's capital.
- 4.24 A number of other submissions, including from Claire Hanna MLA and a wide range of community groups and individuals, focussed on how their communities are interwoven into the fabric of Belfast and argued that a modest expansion of the current boundaries would preserve these important ties.

Consideration

- 4.25 We were greatly helped in developing these Revised Proposals by the quality of submissions advanced in favour of a four-seat Belfast. Respondents provided a strong rationale supported by a rich store of detail on local ties.
- 4.26 Of particular note is the body of opinion in favour of keeping Dundonald within a Belfast East constituency. Criticism of splitting the Glengormley/Newtownabbey area over four constituencies was another common theme across the composite responses. A number of responses supported the retention of the Knockbracken and Carryduff areas within a Belfast constituency.
- 4.27 In response to the submissions received we have undertaken extensive further work. We have thoroughly tested the alternative composite proposals and, taking them into account, drew up two new patterns of our own for the region, one with a four-seat Belfast and the other with a three-seat Belfast. We concluded that either of these would have been more compliant with the statutory criteria than the Provisional Proposals or the best of the alternatives that we received.
- 4.28 We concluded that our preferred four-seat Belfast model would respect existing boundaries more comprehensively not only in the Belfast area but also across Northern Ireland. It would result in ten constituencies having only minor changes (that is, affecting five wards or fewer): under our most compliant three-seat Belfast model, only eight constituencies would have passed this test. The four-seat model also produced a lower level of disruption amongst voters across the region as measured by the 'unmoved electors' metric cited in paragraphs 4.4 and 4.7 above.

Conclusion

- 4.29 We reviewed our Provisional Proposals in light of the strong and detailed responses submitted during the consultation.
- 4.30 The strength of evidence provided, alongside a general consensus to retain closer alignment to existing constituencies, has persuaded us to revise our Provisional Proposals to include a four-seat Belfast.

- 4.31 This has enabled us to minimise disruption to many of the existing constituencies beyond the city. This is an important consideration and a positive response to the evidence submitted to us.

Issues beyond our remit

- 4.32 A number of representations raised issues that are not within our remit including:
- a. *The number of constituencies should remain unchanged:* this is determined by a formula set out in the legislation.
 - b. *The use of alternative registers for determining the allocation of constituencies:* the legislation requires us to base our calculations on the electoral register in existence on a specified date. For the 2018 Review this is the register at 1 December 2015.
 - c. *Some constituencies should remain unchanged:* to give effect to the absolute requirements set out in Rule 2, we must use the local government wards that existed on the most recent ordinary council election day before the Review date. For the 2018 Review that date is 22 May 2014. The local government wards on that date are different from the wards on which the existing Parliamentary constituencies were constructed. That factor alone results in changes to each of the existing constituencies. This is compounded by the requirement to reduce the number of constituencies by one and keeping them within the strict electoral tolerance limits.
 - d. *Electoral outcomes:* a number of respondents expressed concern that they would become part of a constituency that did not reflect their voting wishes. We do not take account of electoral outcomes.
 - e. *The removal of Rule 7 from the statute books:* this is a matter for Parliament.
 - f. *A breaking of the links between Northern Ireland Assembly seats and Westminster constituencies:* the co-terminosity of Westminster and Assembly constituencies is provided for in Section 33 of the Northern Ireland Act 1998. Any changes to this position is a matter for Parliament.
 - g. *The requirement for Parliament to approve the Commission's recommendations:* the process by which our recommendations come into effect is set out in the legislation. Any change to this position is a matter for Parliament.

Chapter 5

Names and Designations

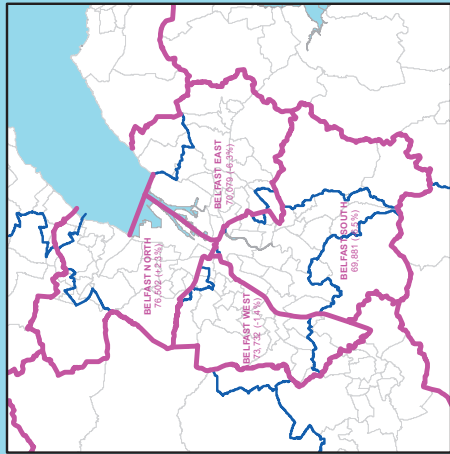
- 5.1 We are required to recommend a name and designation (either 'county' or 'borough') for each of the proposed constituencies.
- 5.2 For our Provisional Proposals we decided to retain the name of every proposed constituency which was sufficiently similar to an existing constituency, provided that it remained appropriate. Otherwise, we applied the long-established convention of naming constituencies after counties qualified by compass points.
- 5.3 In three cases where this did not seem accurate, we proposed new names derived from major geographical features or historical associations.
- 5.4 In drawing up these Revised Proposals, we have followed the same procedure, while taking the consultation feedback into account.
- 5.5 We propose designating only the Belfast constituencies as borough constituencies. The practical effect of this concerns the level of candidates' expenses allowable at elections.

Chapter 6

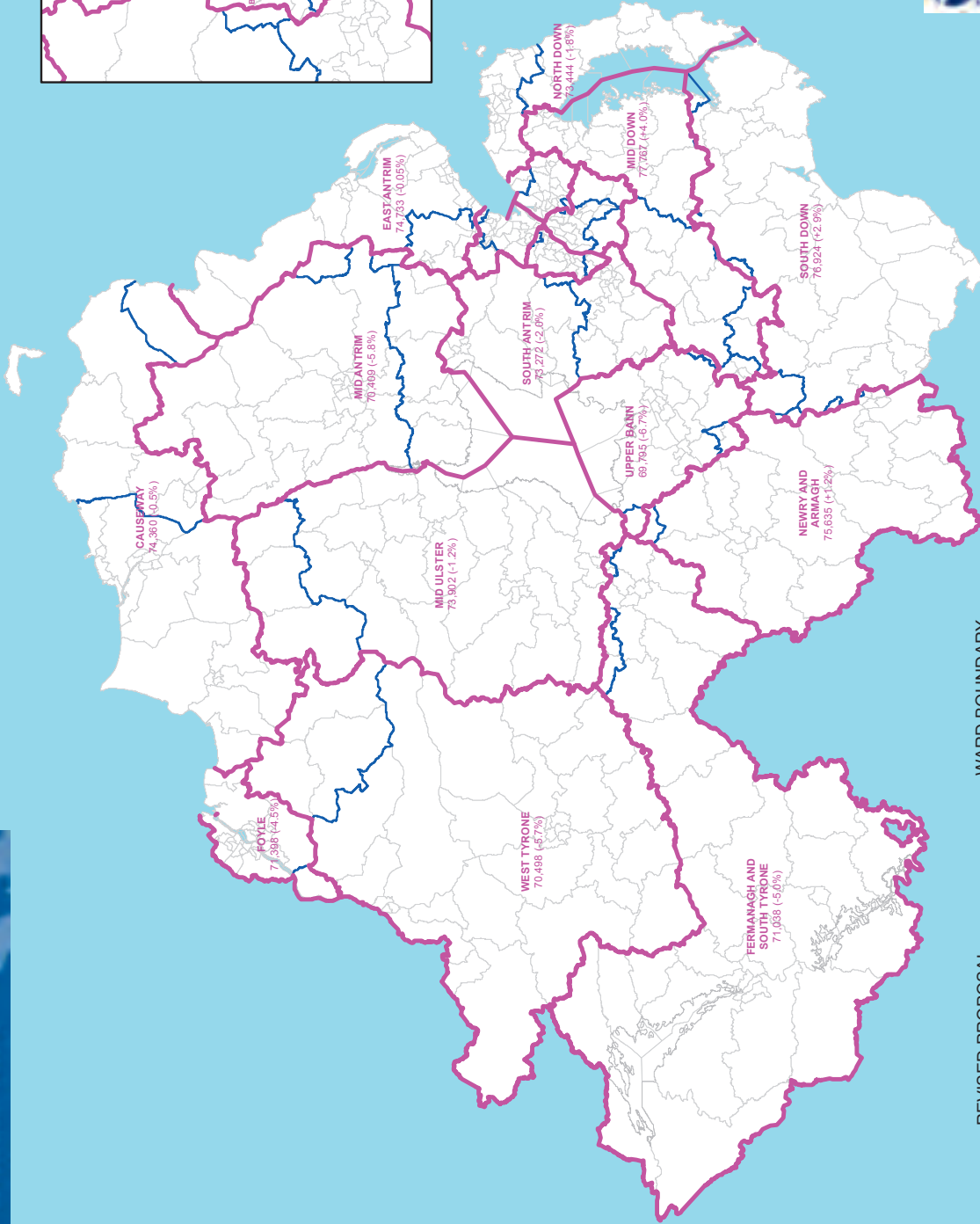
The Revised Proposals

- 6.1 Although there were many competing and alternative suggestions put forward in the submissions, there were a number of common threads that we have incorporated into these Revised Proposals.
- 6.2 We acknowledge the merits of many of the proposals which we have not included in these Revised Proposals. However, we are satisfied that we have carefully considered all of the evidence submitted during the consultations; identified the major themes that have arisen; revisited the Provisional Proposals to address all of the main issues raised; and constructed Revised Proposals which provide a much improved outcome for the whole of Northern Ireland within the constraints of the legislative framework.
- 6.3 The main changes from our Provisional Proposals are:
- We have engaged Rule 7;
 - Belfast would retain four constituencies to include the Dundonald, Glengormley and Newtownbreda/Carryduff areas;
 - Fermanagh and South Tyrone would remain as it is apart from changes needed to accommodate the new ward boundaries;
 - There would be greater alignment with existing constituency boundaries across Northern Ireland;
 - Many of the key towns mentioned in the consultation responses would have their hinterlands restored, including Ballymena, Ballymoney, Coleraine and Dungannon;
 - Glengormley town would lie largely within one constituency.
- 6.4 In relation to the pattern of constituencies established in 2008, two would be unchanged except as required to accommodate the new ward boundaries (Foyle and Fermanagh & South Tyrone); twelve would be obvious successors with varying degrees of change and retain the same name (Belfast East, Belfast North, Belfast South, Belfast West, East Antrim, Mid Ulster, Newry and Armagh, North Down, South Antrim, South Down, Upper Bann and West Tyrone) and there would be three new constituencies (Causeway, Mid Antrim and Mid Down). There would be no single successor to the existing constituencies of North Antrim, Lagan Valley, Strangford and East Londonderry.
- 6.5 No wards would be split.
- 6.6 The following pages show the Revised Proposals. Information is provided on the ward composition of each constituency together with a map indicating the proposed new boundaries and movements of wards in and out relative to our Provisional Proposals.

REVISED PROPOSALS AND EXISTING PARLIAMENTARY CONSTITUENCIES



BELFAST

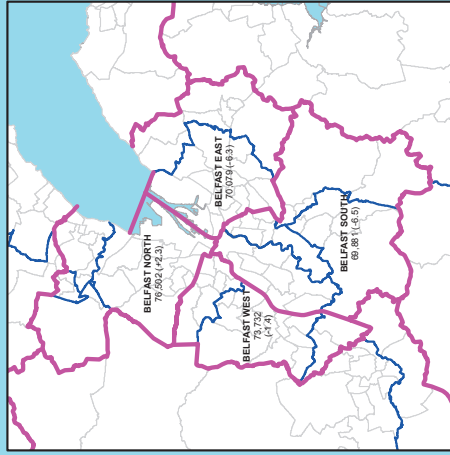


- REVISED PROPOSAL
- WARD BOUNDARY
- EXISTING PARLIAMENTARY CONSTITUENCY BOUNDARY 2010

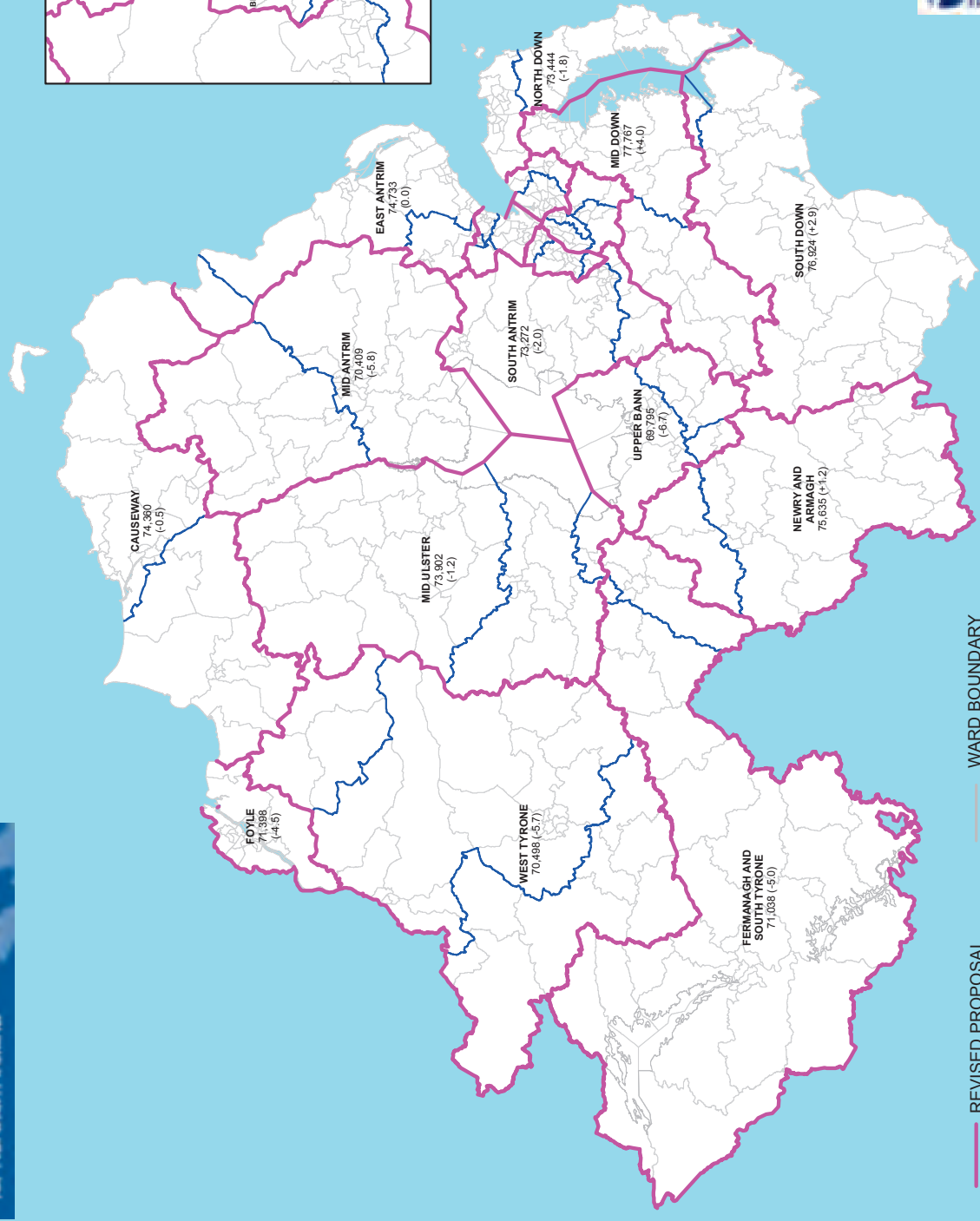


Except as otherwise permitted under Copyright, Designs and Patents Act 1988 (as amended), the publication may only be reproduced, stored or transmitted in any form or by any means, with the prior permission of Land & Property Services.
© Crown Copyright and Database Right 2016

REVISED PROPOSALS AND PROVISIONAL PROPOSALS



BELFAST

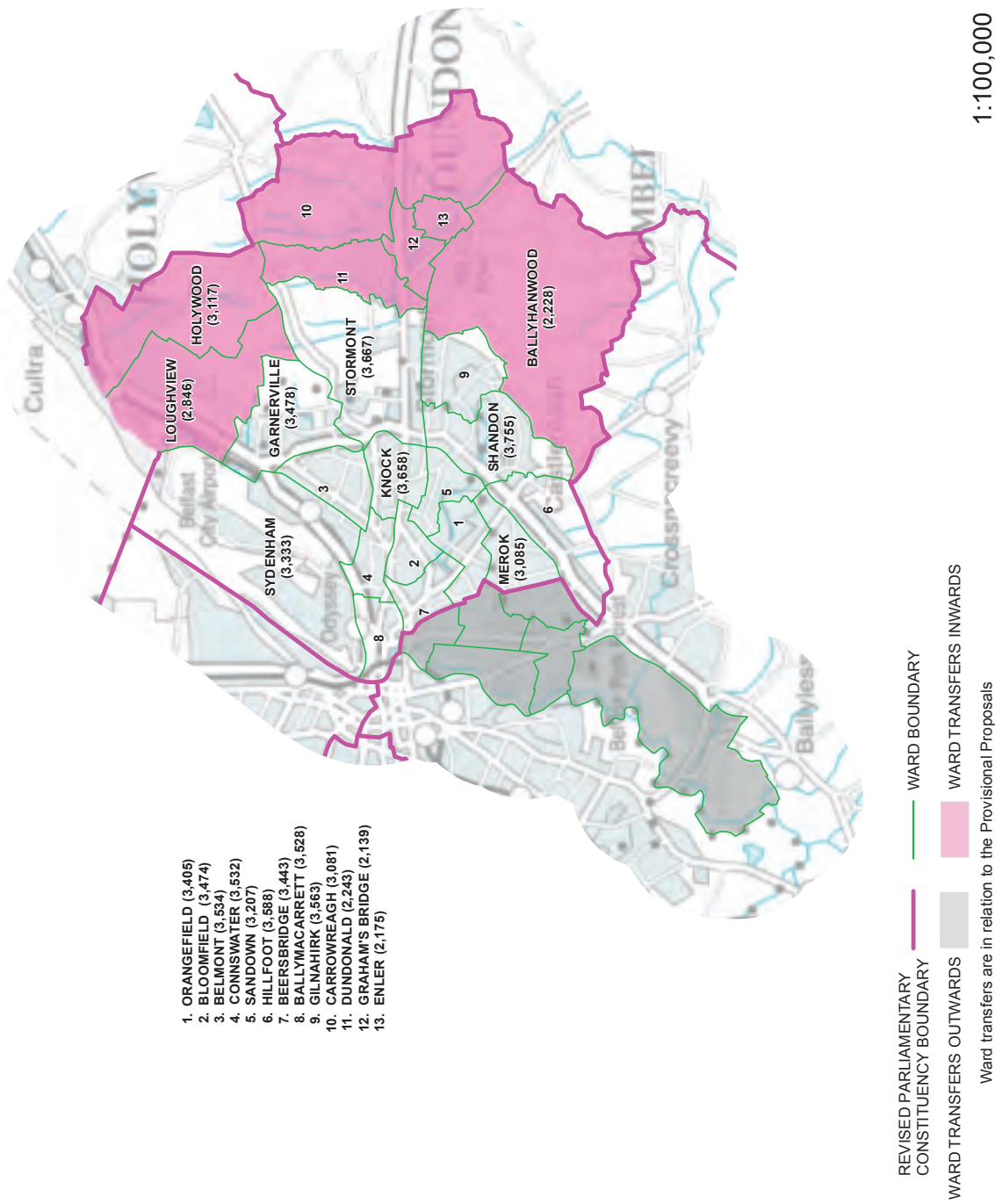


- REVISED PROPOSAL
- PROVISIONAL PROPOSAL
- WARD BOUNDARY



Except as otherwise permitted under Copyright, Designs and Patents Act 1988 (as amended), this publication may only be reproduced, stored or transmitted in any form or by any means, with the prior permission of Land & Property Services.
© Crown Copyright and Database Right 2017

REVISED PROPOSAL: BELFAST EAST

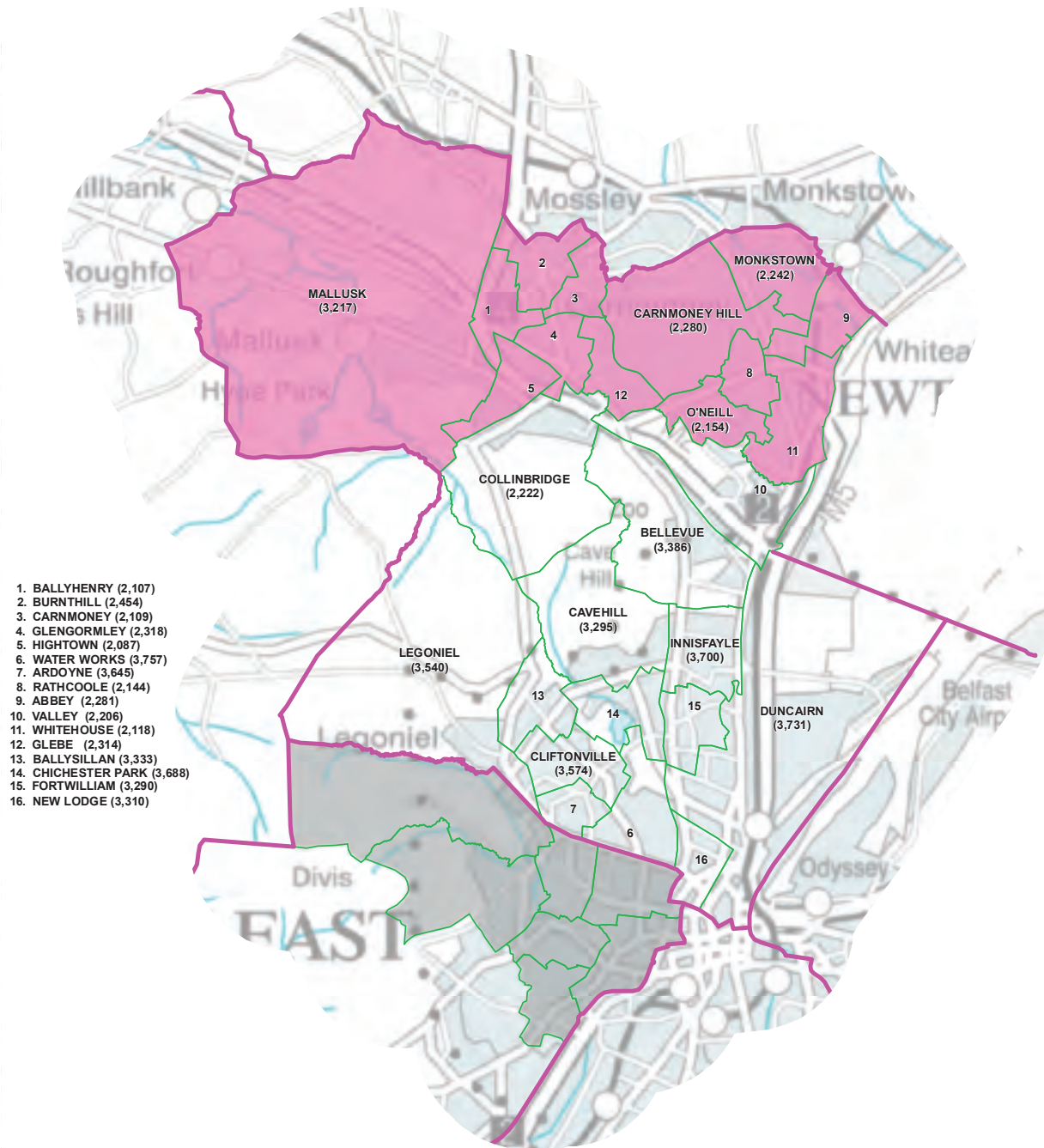


Produced by LAND & PROPERTY SERVICES,
Lanyon Place, 7, Lanyon Place, Belfast, BT1 3LP.
Website: www.land-property.gov.uk
© Crown Copyright and Database Right 2018

Belfast East Borough Constituency

WARD	ELECTORATE	WARD	ELECTORATE
Belfast LGD			
Ballymacarrett	3,528	Knock	3,658
Beersbridge	3,443	Merok	3,085
Belmont	3,534	Orangefield	3,405
Bloomfield	3,474	Sandown	3,207
Connswater	3,532	Shandon	3,755
Garnerville	3,478	Stormont	3,667
Gilnahirk	3,563	Sydenham	3,333
Hillfoot	3,588		
Ards & North Down LGD			
Hollywood	3,117	Loughview	2,846
Lisburn and Castlereagh LGD			
Ballyhanwood	2,228	Enler	2,175
Carrowreagh	3,081	Graham's Bridge	2,139
Dundonald	2,243		
Total constituency electorate - 70,079			

REVISED PROPOSAL: BELFAST NORTH



1. BALLYHENRY (2,107)
2. BURNTHILL (2,454)
3. CARNMONEY (2,109)
4. GLENGORMLEY (2,318)
5. HIGHTOWN (2,087)
6. WATER WORKS (3,757)
7. ARDOYNE (3,645)
8. RATHCOOLE (2,144)
9. ABBEY (2,281)
10. VALLEY (2,206)
11. WHITEHOUSE (2,118)
12. GLEBE (2,314)
13. BALLYSTALLAN (3,333)
14. CHICHESTER PARK (3,688)
15. FORTWILLIAM (3,290)
16. NEW LODGE (3,310)

1:80,000



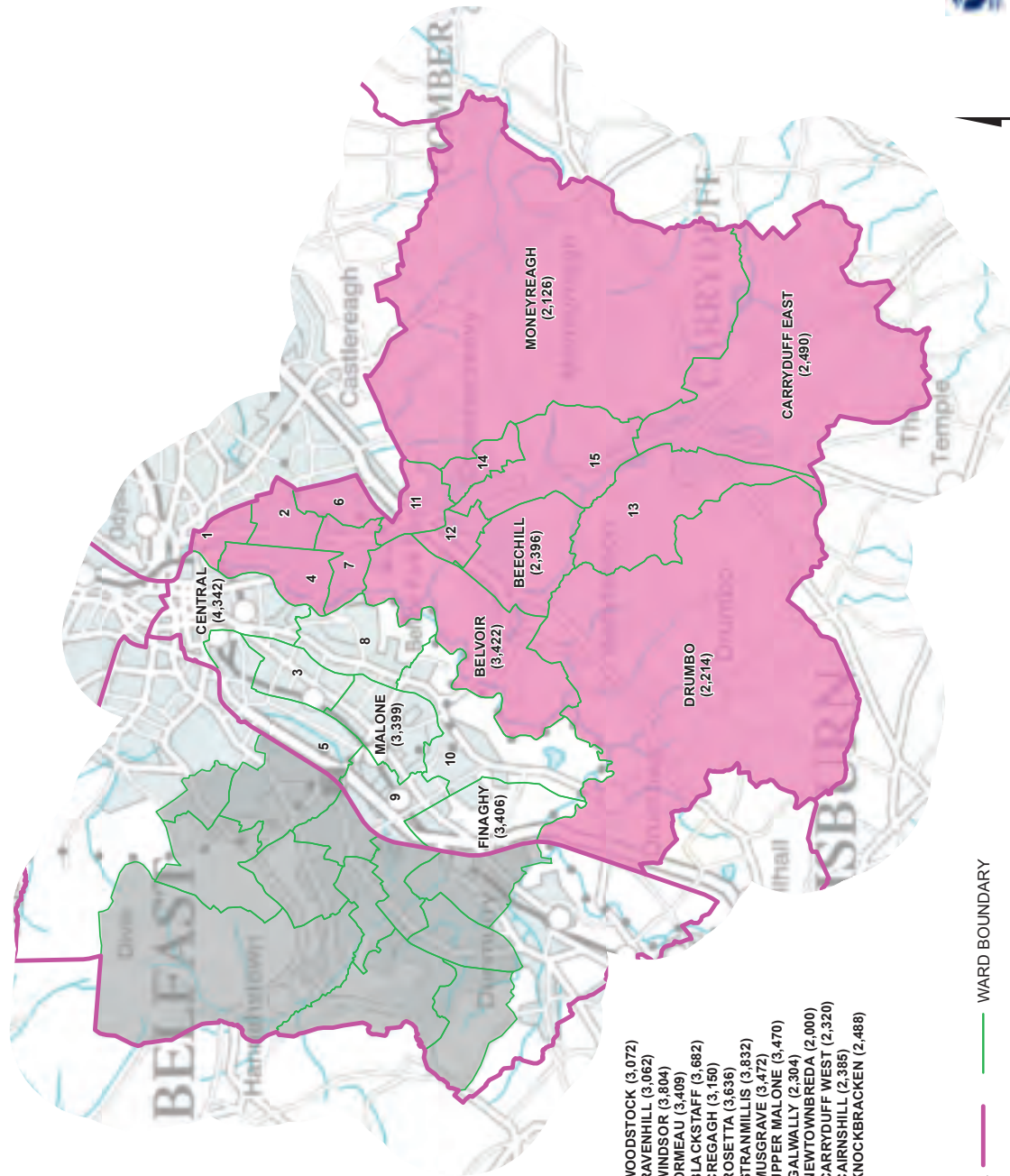
Produced by LAND & PROPERTY SERVICES,
Lanyon Plaza, 7 Lanyon Place, Belfast, BT1 3LP.
Website: www.finance-ni.gov.uk
© Crown Copyright and Database Right 2018

Belfast North Borough Constituency

WARD	ELECTORATE	WARD	ELECTORATE
Belfast LGD			
Ardoyne	3,645	Duncairn	3,731
Ballysillan	3,333	Fortwilliam	3,290
Bellevue	3,386	Innisfayle	3,700
Cavehill	3,295	Legoniel	3,540
Chichester Park	3,688	New Lodge	3,310
Cliftonville	3,574	Water Works	3,757
Antrim and Newtownabbey LGD			
Abbey	2,281	Hightown	2,087
Ballyhenry	2,107	Mallusk	3,217
Burnthill	2,454	Monkstown	2,242
Carnmoney	2,109	O'Neill	2,154
Carnmoney Hill	2,280	Rathcoole	2,144
Collinbridge	2,222	Valley	2,206
Glebe	2,314	Whitehouse	2,118
Glengormley	2,318		

Total constituency electorate - 76,502

REVISED PROPOSAL: BELFAST SOUTH



- 1. WOODSTOCK (3,072)
- 2. RAVENHILL (3,062)
- 3. WINDSOR (3,804)
- 4. ORMEAU (3,409)
- 5. BLACKSTAFF (3,682)
- 6. CREGAGH (3,150)
- 7. ROSETTA (3,636)
- 8. STRANMILLIS (3,832)
- 9. MUSGRAVE (3,472)
- 10. UPPER MALONE (3,470)
- 11. GALWALLY (2,304)
- 12. NEWTO WNBREDA (2,000)
- 13. CARRYDUFF WEST (2,320)
- 14. CAIRNSHILL (2,385)
- 15. KNOCKBRACKEN (2,488)

REVISED PARLIAMENTARY CONSTITUENCY BOUNDARY — WARD BOUNDARY

WARD TRANSFERS OUTWARDS — WARD TRANSFERS INWARDS

Ward transfers are in relation to the Provisional Proposals



Produced by LAND & PROPERTY SERVICES,
Lanyon Plaza, 7 Lanyon Place, Belfast, BT1 3LP.
Website: www.finance-ni.gov.uk
© Crown Copyright and Database Right, 2018



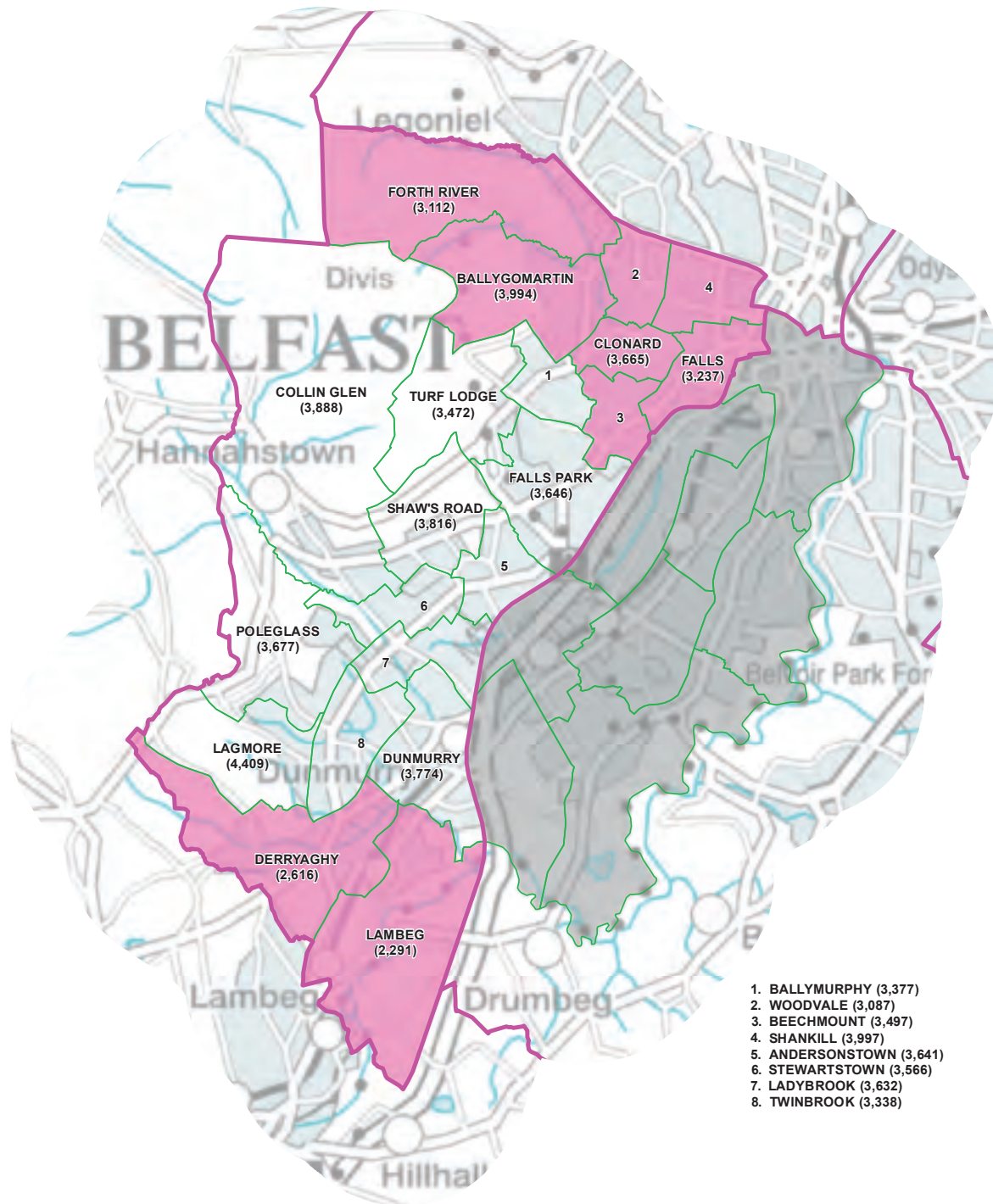
1:100,000

Belfast South Borough Constituency

WARD	ELECTORATE	WARD	ELECTORATE
Belfast LGD			
Belvoir	3,422	Ormeau	3,409
Blackstaff	3,682	Ravenhill	3,062
Central	4,342	Rosetta	3,636
Cregagh	3,150	Stranmillis	3,832
Finaghy	3,406	Upper Malone	3,470
Malone	3,399	Windsor	3,804
Musgrave	3,472	Woodstock	3,072
Lisburn and Castlereagh LGD			
Beechill	2,396	Galwally	2,304
Cairnshill	2,385	Knockbracken	2,488
Carryduff East	2,490	Moneyreagh	2,126
Carryduff West	2,320	Newtownbreda	2,000
Drumbo	2,214		

Total constituency electorate – 69,881

REVISED PROPOSAL: BELFAST WEST



1. BALLYMURPHY (3,377)
2. WOODVALE (3,087)
3. BEECHMOUNT (3,497)
4. SHANKILL (3,997)
5. ANDERSONSTOWN (3,641)
6. STEWARTSTOWN (3,566)
7. LADYBROOK (3,632)
8. TWINBROOK (3,338)

REVISED PARLIAMENTARY CONSTITUENCY BOUNDARY ———
 WARD BOUNDARY ———
 WARD TRANSFERS OUTWARDS ———
 WARD TRANSFERS INWARDS ———
 Ward transfers are in relation to the Provisional Proposals

1:70,000



Produced by LAND & PROPERTY SERVICES,
 Lanyon Plaza, 7 Lanyon Place, Belfast, BT1 3LP.
 Website: www.finance-ni.gov.uk
 © Crown Copyright and Database Right 2018

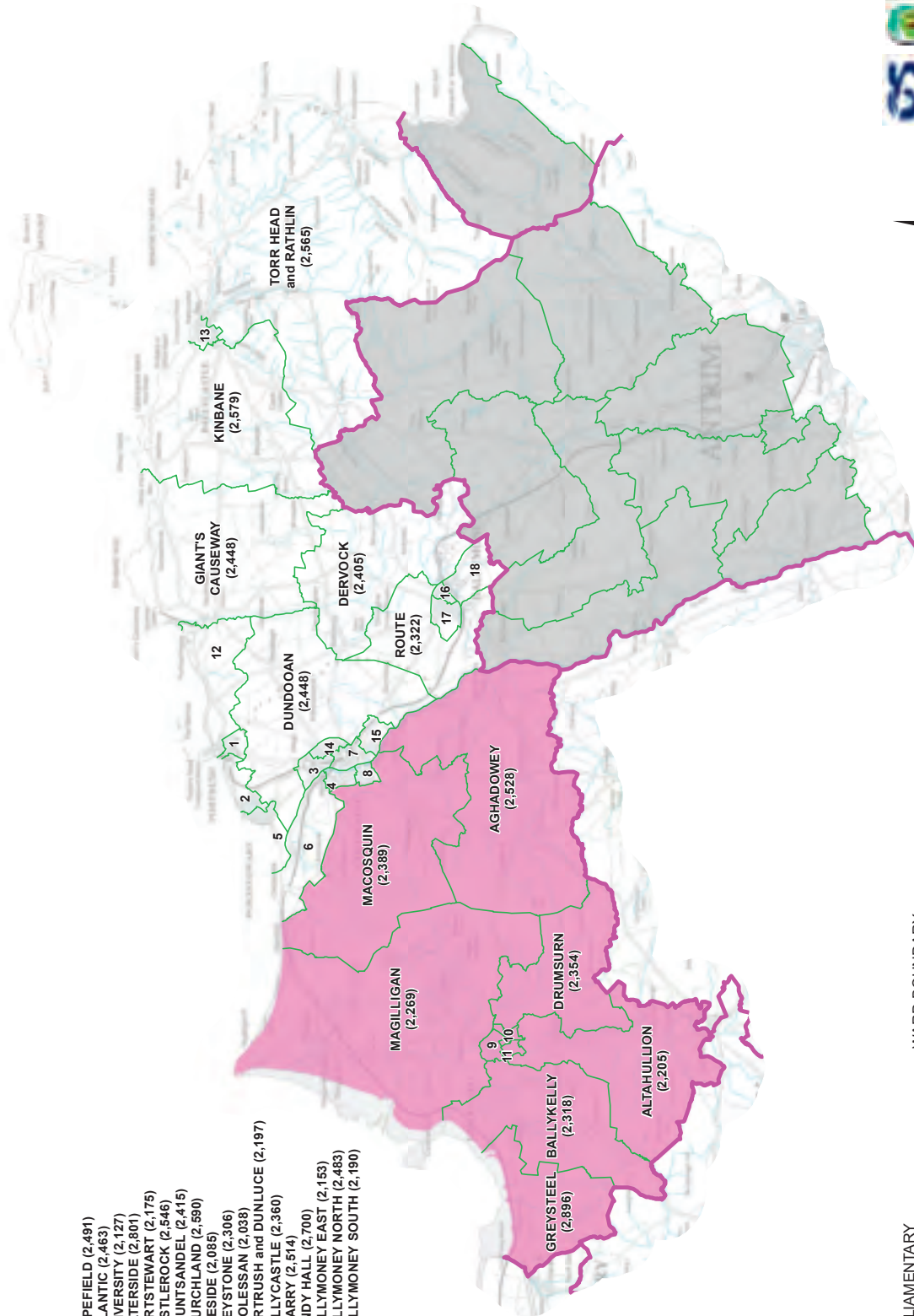
Belfast West Borough Constituency

WARD	ELECTORATE	WARD	ELECTORATE
Belfast LGD			
Andersonstown	3,641	Ladybrook	3,632
Ballygomartin	3,994	Lagmore	4,409
Ballymurphy	3,377	Poleglass	3,677
Beechmount	3,497	Shankill	3,997
Clonard	3,665	Shaw's Road	3,816
Collin Glen	3,888	Stewartstown	3,566
Dunmurry	3,774	Turf Lodge	3,472
Falls	3,237	Twinbrook	3,338
Falls Park	3,646	Woodvale	3,087
Forth River	3,112		
Lisburn and Castlereagh LGD			
Derryaghy	2,616	Lambeg	2,291

Total constituency electorate – 73,732

REVISED PROPOSAL: CAUSEWAY

- 1. HOPEFIELD (2,491)
- 2. ATLANTIC (2,463)
- 3. UNIVERSITY (2,127)
- 4. WATERSIDE (2,801)
- 5. PORTSTEWART (2,175)
- 6. CASTLEROCK (2,546)
- 7. MOUNTSANDAL (2,415)
- 8. CHURCHLAND (2,590)
- 9. ROESIDE (2,085)
- 10. GREYSTONE (2,306)
- 11. COOLESSAN (2,038)
- 12. PORTTRUSH and DUNLUCE (2,197)
- 13. BALLYCASTLE (2,360)
- 14. QUARRY HALL (2,700)
- 15. WINDY HALL (2,153)
- 16. BALLYMONEY NORTH (2,483)
- 17. BALLYMONEY SOUTH (2,190)



REVISED PARLIAMENTARY CONSTITUENCY BOUNDARY ——— WARD BOUNDARY

WARD TRANSFERS OUTWARDS ——— WARD TRANSFERS INWARDS

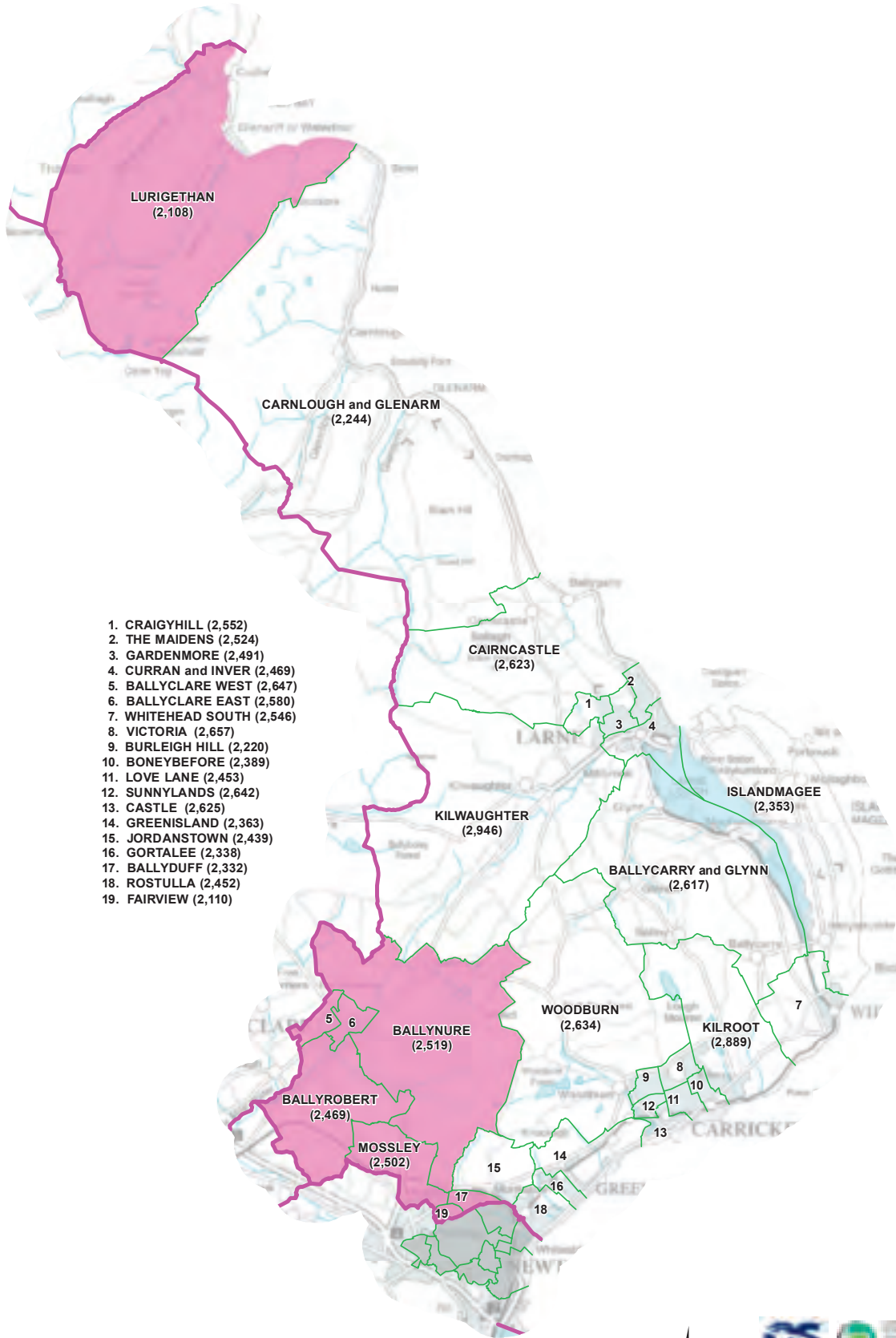
Ward transfers are in relation to the Provisional Proposals

Causeway County Constituency

WARD	ELECTORATE	WARD	ELECTORATE
Causeway Coast and Glens LGD			
Aghadowey	2,528	Greystone	2,306
Altahullion	2,205	Hopefield	2,491
Atlantic	2,463	Kinbane	2,579
Ballycastle	2,360	Macosquin	2,389
Ballykelly	2,318	Magilligan	2,269
Ballymoney East	2,153	Mountsandel	2,415
Ballymoney North	2,483	Portrush and Dunluce	2,197
Ballymoney South	2,190	Portstewart	2,175
Castlerock	2,546	Quarry	2,514
Churchland	2,590	Roeside	2,085
Coolessan	2,038	Route	2,322
Dervock	2,405	Torr Head and Rathlin	2,565
Drumsum	2,354	University	2,127
Dundooan	2,448	Waterside	2,801
Giant's Causeway	2,448	Windy Hall	2,700
Greysteel	2,896		

Total constituency electorate – 74,360

REVISED PROPOSAL: EAST ANTRIM



1. CRAIGYHILL (2,552)
2. THE MAIDENS (2,524)
3. GARDENMORE (2,491)
4. CURRAN and INVER (2,469)
5. BALLYCLARE WEST (2,647)
6. BALLYCLARE EAST (2,580)
7. WHITEHEAD SOUTH (2,546)
8. VICTORIA (2,657)
9. BURLEIGH HILL (2,220)
10. BONEYBEFORE (2,389)
11. LOVE LANE (2,453)
12. SUNNYLANDS (2,642)
13. CASTLE (2,625)
14. GREENISLAND (2,363)
15. JORDANSTOWN (2,439)
16. GORTALEE (2,338)
17. BALLYDUFF (2,332)
18. ROSTULLA (2,452)
19. FAIRVIEW (2,110)

REVISED PARLIAMENTARY CONSTITUENCY BOUNDARY ——— WARD BOUNDARY
 WARD TRANSFERS OUTWARDS ■ WARD TRANSFERS INWARDS ■

Ward transfers are in relation to the Provisional Proposals

1:200,000

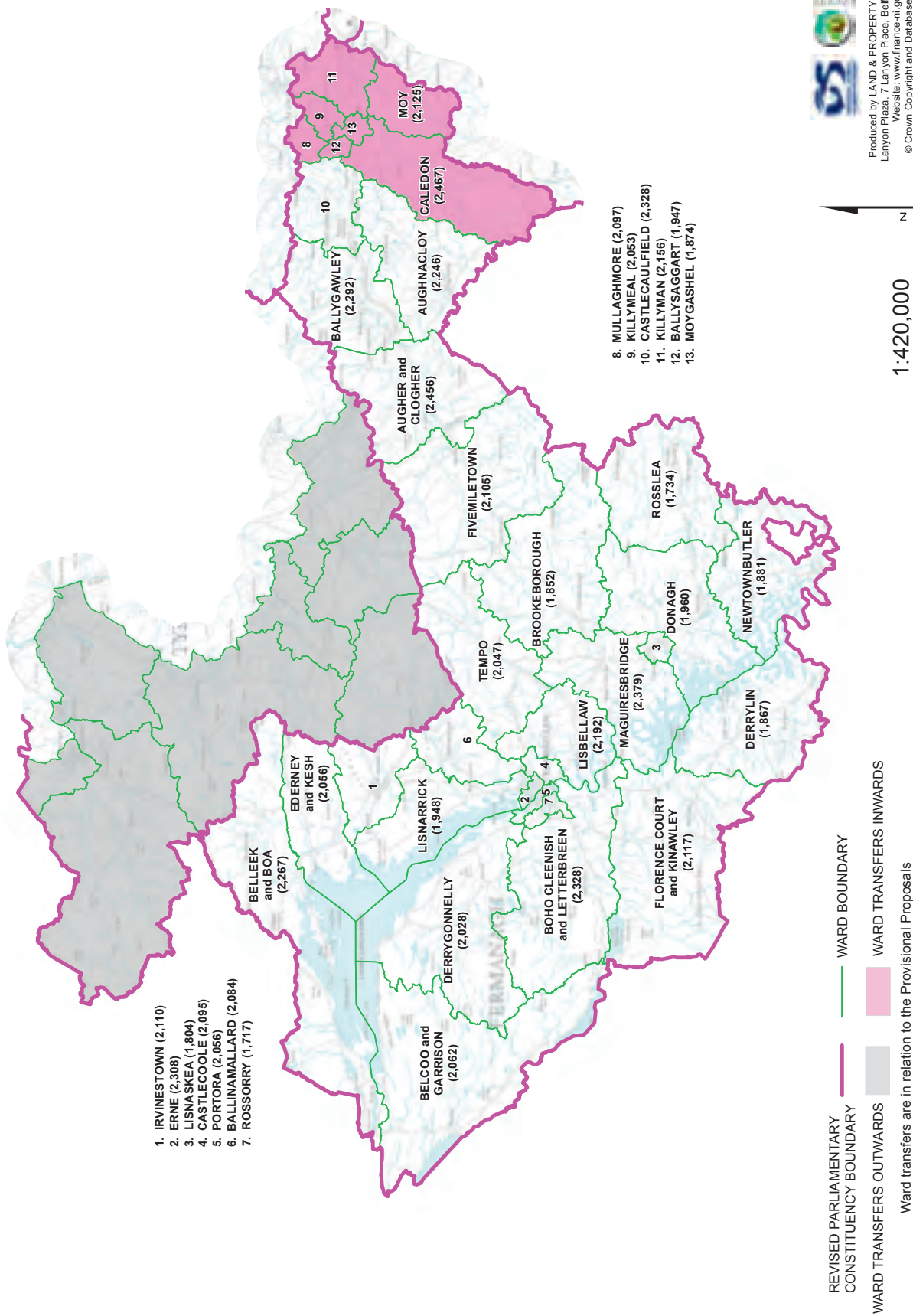
Produced by LAND & PROPERTY SERVICES,
 Lanyon Plaza, 7 Lanyon Place, Belfast, BT1 3LP.
 Website: www.finance-ni.gov.uk
 © Crown Copyright and Database Right 2018

East Antrim County Constituency

WARD	ELECTORATE	WARD	ELECTORATE
Causeway Coast and Glens LGD			
Lurigethan	2,108		
Antrim and Newtownabbey LGD			
Ballyclare East	2,580	Fairview	2,110
Ballyclare West	2,647	Jordanstown	2,439
Ballyduff	2,332	Mossley	2,502
Ballynure	2,519	Rostulla	2,452
Ballyrobert	2,469		
Mid and East Antrim LGD			
Ballycarry and Glynn	2,617	Greenisland	2,363
Boneybefore	2,389	Islandmagee	2,353
Burleigh Hill	2,220	Kilroot	2,889
Cairncastle	2,623	Kilwaughter	2,946
Carnlough and Glenarm	2,244	Love Lane	2,453
Castle	2,625	Sunnylands	2,642
Craigyhill	2,552	The Maidens	2,524
Curran and Inver	2,469	Victoria	2,657
Gardenmore	2,491	Whitehead South	2,546
Gortalee	2,338	Woodburn	2,634

Total constituency electorate – 74,733

REVISED PROPOSAL: FERMANAGH AND SOUTH TYRONE

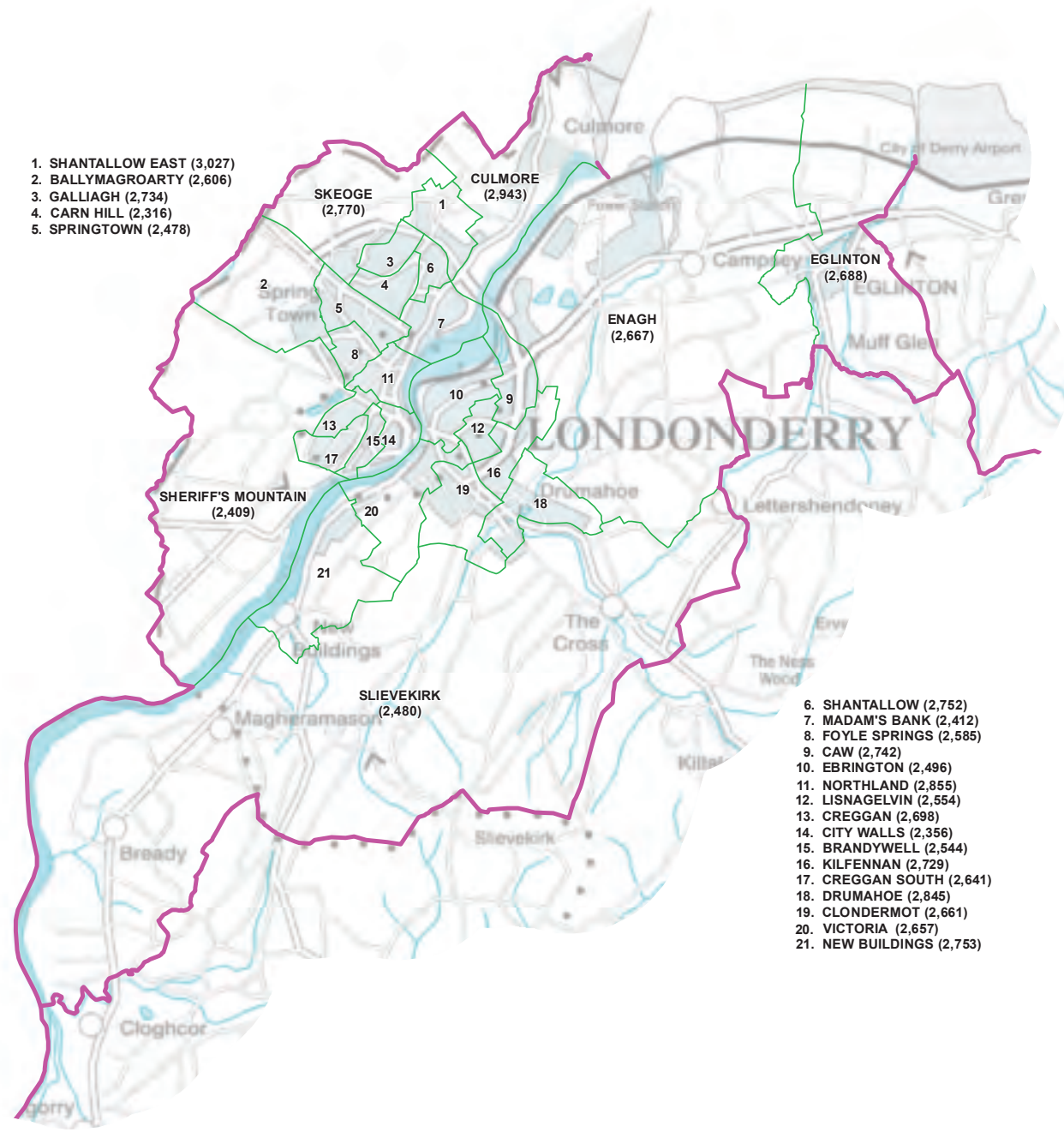


Fermanagh and South Tyrone County Constituency

WARD	ELECTORATE	WARD	ELECTORATE
Fermanagh and Omagh LGD			
Ballinamallard	2,084	Florence Court and Kinawley	2,117
Belcoo and Garrison	2,062	Irvinestown	2,110
Belleek and Boa	2,267	Lisbellaw	2,192
Boho, Cleenish and Letterbreen	2,328	Lisnarrick	1,948
Brookeborough	1,852	Lisnaskea	1,804
Castlecoole	2,095	Maguiresbridge	2,379
Derrygonnelly	2,028	Newtownbutler	1,881
Derrylin	1,867	Portora	2,056
Donagh	1,960	Rosslea	1,734
Ederney and Kesh	2,056	Rossorry	1,717
Erne	2,308	Tempo	2,047
Mid Ulster LGD			
Augher and Clogher	2,456	Fivemiletown	2,105
Aughnacloy	2,246	Killyman	2,156
Ballygawley	2,292	Killymeal	2,053
Ballysaggart	1,947	Moy	2,125
Caledon	2,467	Moygashel	1,874
Castlecaulfield	2,328	Mullaghmore	2,097

Total constituency electorate – 71,038

REVISED PROPOSAL: FOYLE



- 1. SHANTALLOW EAST (3,027)
- 2. BALLYMAGROARTY (2,606)
- 3. GALLIAGH (2,734)
- 4. CARN HILL (2,316)
- 5. SPRINGTOWN (2,478)

- 6. SHANTALLOW (2,752)
- 7. MADAM'S BANK (2,412)
- 8. FOYLE SPRINGS (2,585)
- 9. CAW (2,742)
- 10. EBRINGTON (2,496)
- 11. NORTHLAND (2,855)
- 12. LISNAGELVIN (2,554)
- 13. CREGGAN (2,698)
- 14. CITY WALLS (2,356)
- 15. BRANDYWELL (2,544)
- 16. KILFENNAN (2,729)
- 17. CREGGAN SOUTH (2,641)
- 18. DRUMAHOE (2,845)
- 19. CLONDERMOT (2,661)
- 20. VICTORIA (2,657)
- 21. NEW BUILDINGS (2,753)

REVISED PARLIAMENTARY CONSTITUENCY BOUNDARY ——— WARD BOUNDARY

1:120,000



Produced by LAND & PROPERTY SERVICES,
Lanyon Plaza, 7 Lanyon Place, Belfast, BT1 3LP.
Website: www.finance-ni.gov.uk
© Crown Copyright and Database Right 2018

Foyle County Constituency

WARD	ELECTORATE	WARD	ELECTORATE
Derry and Strabane LGD			
Ballymagroarty	2,606	Galliagh	2,734
Brandywell	2,544	Kilfennan	2,729
Carn Hill	2,316	Lisnagelvin	2,554
Caw	2,742	Madam's Bank	2,412
City Walls	2,356	New Buildings	2,753
Clondermot	2,661	Northland	2,855
Creggan	2,698	Shantallow	2,752
Creggan South	2,641	Shantallow East	3,027
Culmore	2,943	Sheriff's Mountain	2,409
Drumahoe	2,845	Skeoge	2,770
Ebrington	2,496	Slievekirk	2,480
Eglinton	2,688	Springtown	2,478
Enagh	2,667	Victoria	2,657
Foyle Springs	2,585		

Total constituency electorate – 71,398

REVISED PROPOSAL: MID ANTRIM



- 1. CULLYBACKEY (2,043)
- 2. AHOGHILL (2,576)
- 3. GALGORM (2,370)
- 4. PARK (2,137)
- 5. BROUGHSHANE (2,650)
- 6. ACADEMY (2,110)
- 7. FAIR GREEN (2,023)
- 8. BRAIDWATER (2,099)
- 9. CASTLE DEMESNE (2,030)
- 10. BALLYKEEL (2,159)
- 11. BALLEE and HARRYVILLE (2,299)
- 12. ARDEEVIN (2,344)
- 13. RANDALSTOWN (2,377)

REVISED PARLIAMENTARY CONSTITUENCY BOUNDARY ——— WARD BOUNDARY
 WARD TRANSFERS OUTWARDS ——— WARD TRANSFERS INWARDS
 Ward transfers are in relation to the Provisional Proposals

1:250,000 N

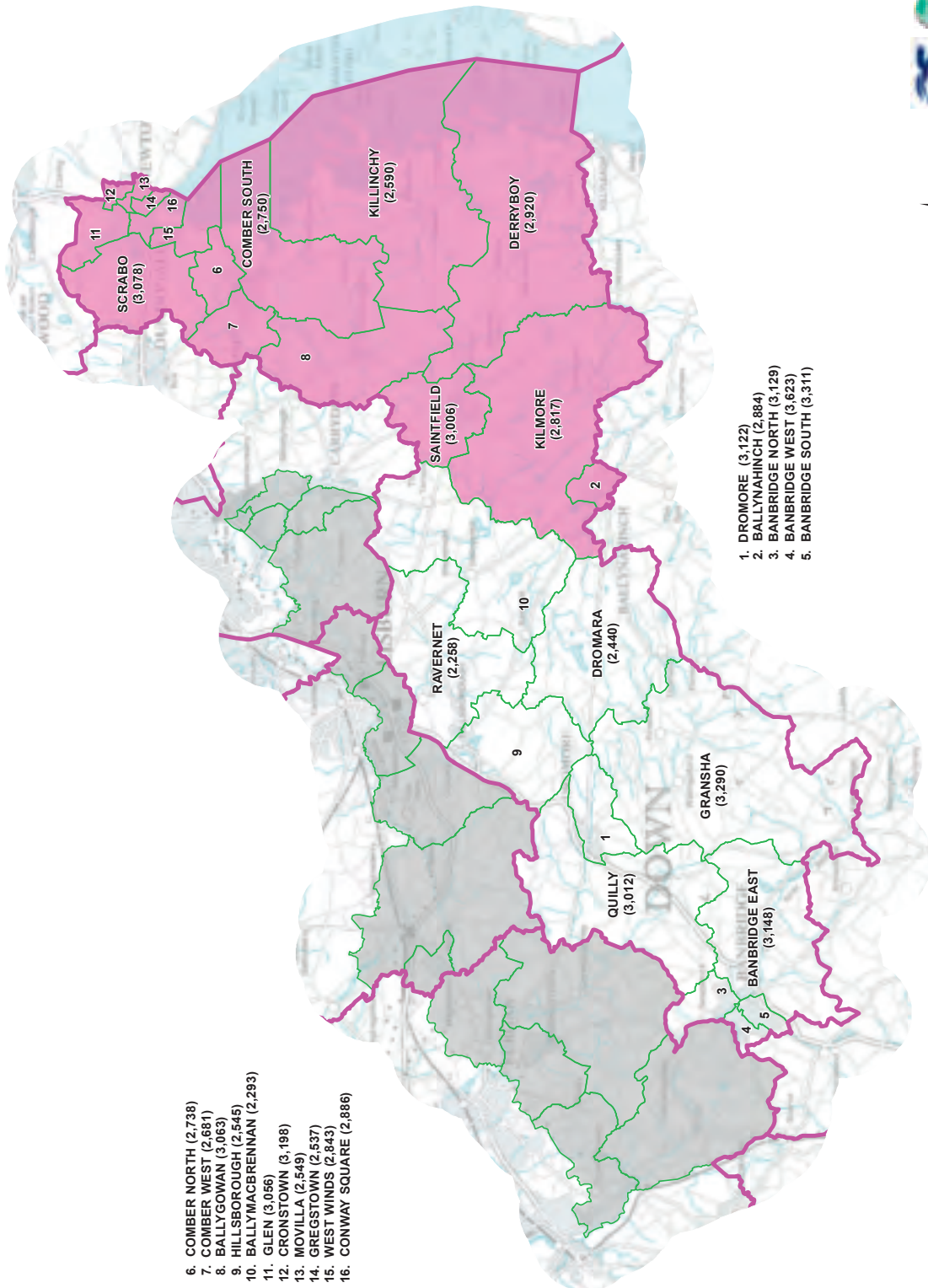
 Produced by LAND & PROPERTY SERVICES,
 Lanyon Plaza, 7 Lanyon Place, Belfast, BT1 3LP.
 Website: www.finance-ni.gov.uk
 © Crown Copyright and Database Right 2018

Mid Antrim County Constituency

WARD	ELECTORATE	WARD	ELECTORATE
Causeway Coast and Glens LGD			
Clogh Mills	2,638	Loughguile and Stranocum	2,518
Dunloy	2,494	Rasharkin	2,600
Antrim and Newtownabbey LGD			
Cranfield	2,300	Randalstown	2,377
Doagh	2,389	Shilvodan	2,456
Parkgate	2,365	Toome	2,541
Mid and East Antrim LGD			
Academy	2,110	Galgorm	2,370
Ahoghill	2,576	Glenravel	2,446
Ardeevin	2,344	Glenwhirry	2,280
Ballee and Harryville	2,299	Grange	2,631
Ballykeel	2,159	Kells	2,417
Braidwater	2,099	Kirkinriola	2,242
Broughshane	2,650	Maine	2,275
Castle Demesne	2,030	Park	2,137
Cullybackey	2,043	Portglenone	2,318
Fair Green	2,023	Slemish	2,282

Total constituency electorate – 70,4099

REVISED PROPOSAL: MID DOWN



- 6. COMBER NORTH (2,738)
- 7. COMBER WEST (2,681)
- 8. BALLYGOWAN (3,063)
- 9. HILLSBOROUGH (2,545)
- 10. BALLYMACBRENNAN (2,293)
- 11. GLEN (3,056)
- 12. CROSTOWN (3,198)
- 13. MOVILLA (2,549)
- 14. GREGSTOWN (2,537)
- 15. WEST WINDS (2,843)
- 16. CONWAY SQUARE (2,886)

- 1. DROMORE (3,122)
- 2. BALLYNAHINCH (2,884)
- 3. BANBRIDGE NORTH (3,129)
- 4. BANBRIDGE WEST (3,623)
- 5. BANBRIDGE SOUTH (3,311)

REVISED PARLIAMENTARY CONSTITUENCY BOUNDARY ——— WARD BOUNDARY
 WARD TRANSFERS OUTWARDS ——— WARD TRANSFERS INWARDS

Ward transfers are in relation to the Provisional Proposals



Produced by LAND & PROPERTY SERVICES,
 Lanyon Plaza, 7 Lanyon Place, Belfast, BT1 3LP.
 Website: www.finance-ni.gov.uk
 © Crown Copyright and Database Right, 2018

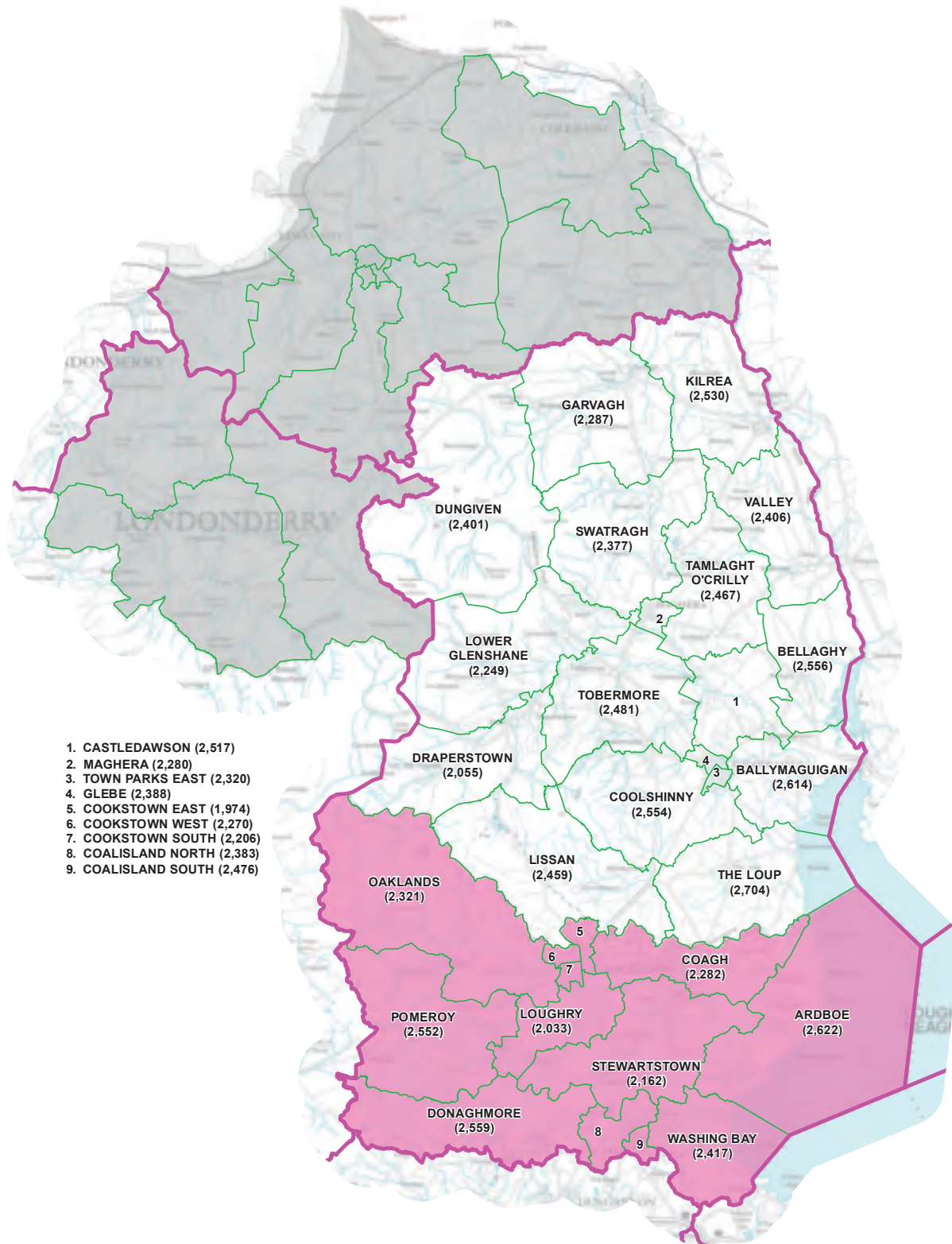


1:250,000

Mid Down County Constituency

WARD	ELECTORATE	WARD	ELECTORATE
Armagh, Banbridge and Craigavon LGD			
Banbridge East	3,148	Dromore	3,122
Banbridge North	3,129	Gransha	3,290
Banbridge South	3,311	Quilly	3,012
Banbridge West	3,623		
Lisburn and Castlereagh LGD			
Ballymacbrennan	2,293	Hillsborough	2,545
Dromara	2,440	Ravernet	2,258
Newry, Mourne and Down LGD			
Ballynahinch	2,884	Kilmore	2,817
Derryboy	2,920	Saintfield	3,006
Ards and North Down LGD			
Ballygowan	3,063	Glen	3,056
Comber North	2,738	Gregstown	2,537
Comber South	2,750	Killinchy	2,590
Comber West	2,681	Movilla	2,549
Conway Square	2,886	Scrabo	3,078
Cronstown	3,198	West Winds	2,843
Total constituency electorate – 77,767			

REVISED PROPOSAL: MID ULSTER



REVISED PARLIAMENTARY CONSTITUENCY BOUNDARY ——— WARD BOUNDARY
 WARD TRANSFERS OUTWARDS ——— WARD TRANSFERS INWARDS
 Ward transfers are in relation to the Provisional Proposals

1:330,000



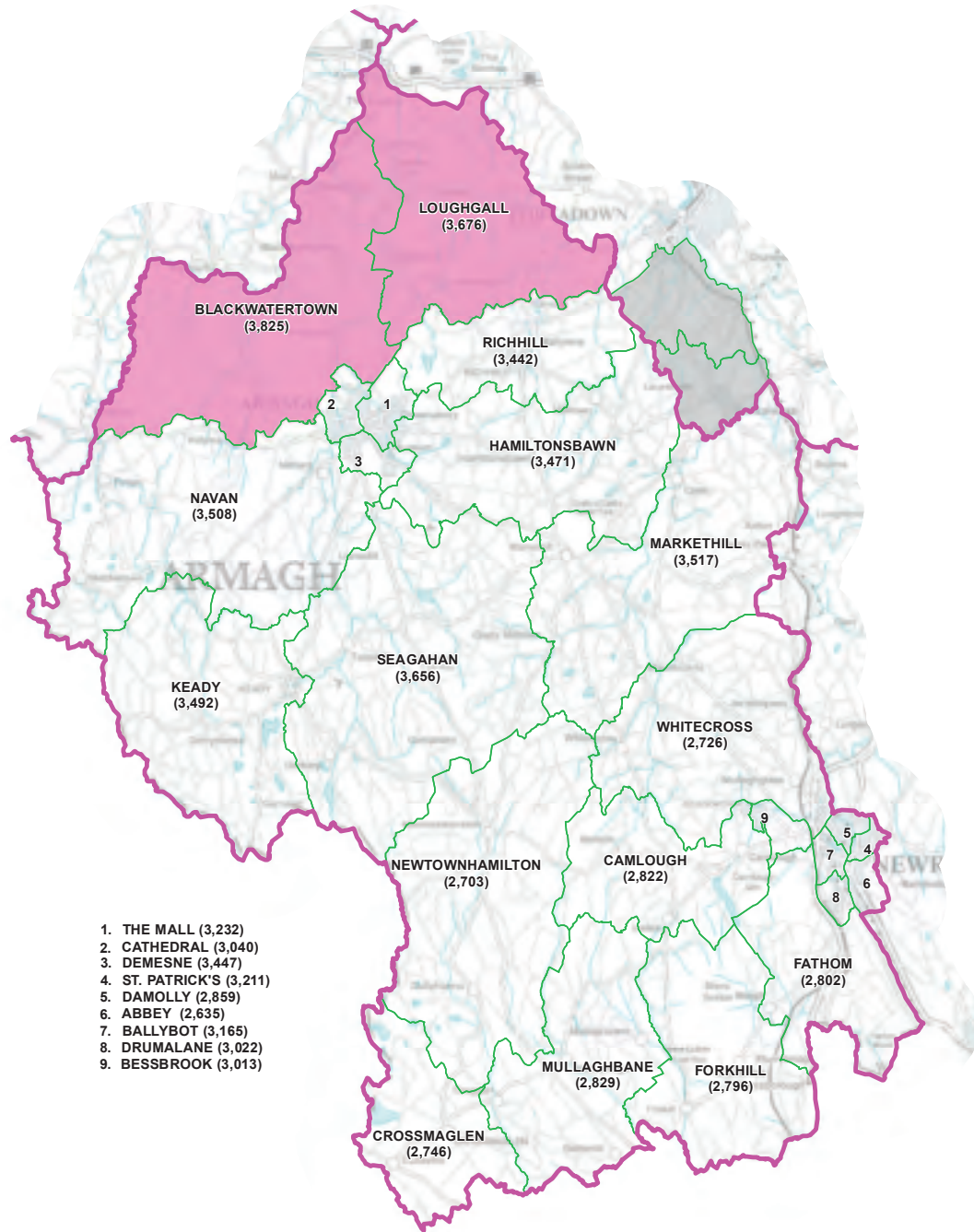
Produced by LAND & PROPERTY SERVICES,
 Lanyon Plaza, 7 Lanyon Place, Belfast, BT1 3LP.
 Website: www.finance-ni.gov.uk
 © Crown Copyright and Database Right 2018

Mid Ulster County Constituency

WARD	ELECTORATE	WARD	ELECTORATE
Causeway Coast and Glens LGD			
Dungiven	2,401	Kilrea	2,530
Garvagh	2,287		
Mid Ulster LGD			
Ardboe	2,622	Lissan	2,459
Ballymaguigan	2,614	Loughry	2,033
Bellaghy	2,556	Lower Glenshane	2,249
Castledawson	2,517	Maghera	2,280
Coagh	2,282	Oaklands	2,321
Coalisland North	2,383	Pomeroy	2,552
Coalisland South	2,476	Stewartstown	2,162
Cookstown East	1,974	Swatragh	2,377
Cookstown South	2,206	Tamlaght O'Crilly	2,467
Cookstown West	2,270	The Loup	2,704
Coolshinny	2,554	Tobermore	2,481
Donaghmore	2,559	Town Parks East	2,320
Draperstown	2,055	Valley	2,406
Glebe	2,388	Washing Bay	2,417

Total constituency electorate – 73,902

REVISED PROPOSAL: NEWRY AND ARMAGH



REVISED PARLIAMENTARY CONSTITUENCY BOUNDARY ——— WARD BOUNDARY
 WARD TRANSFERS OUTWARDS ——— WARD TRANSFERS INWARDS
 Ward transfers are in relation to the Provisional Proposals

1:250,000



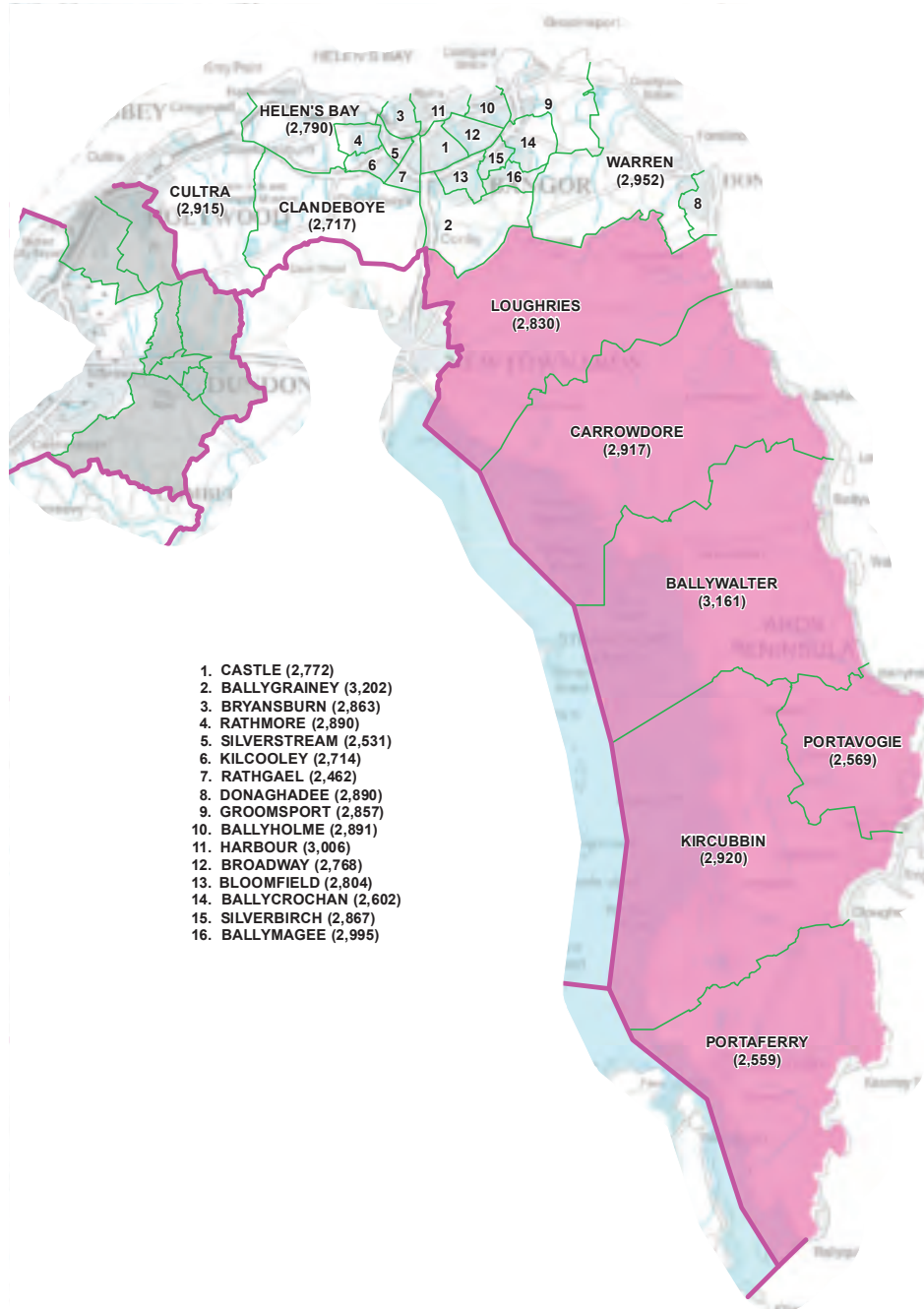
Produced by LAND & PROPERTY SERVICES,
 Lanyon Plaza, 7 Lanyon Place, Belfast, BT1 3LP.
 Website: www.finance-ni.gov.uk
 © Crown Copyright and Database Right 2018

Newry and Armagh County Constituency

WARD	ELECTORATE	WARD	ELECTORATE
Armagh, Banbridge and Craigavon LGD			
Blackwatertown	3,825	Markethill	3,517
Cathedral	3,040	Navan	3,508
Demesne	3,447	Richhill	3,442
Hamiltonsbawn	3,471	Seagahan	3,656
Keady	3,492	The Mall	3,232
Loughgall	3,676		
Newry and Mourne LGD			
Abbey	2,635	Fathom	2,802
Ballybot	3,165	Forkhill	2,796
Bessbrook	3,013	Mullaghbane	2,829
Camlough	2,822	Newtownhamilton	2,703
Crossmaglen	2,746	St. Patrick's	3,211
Damolly	2,859	Whitecross	2,726
Drumalane	3,022		

Total constituency electorate – 75,635

REVISED PROPOSAL: NORTH DOWN



- 1. CASTLE (2,772)
- 2. BALLYGRAINEY (3,202)
- 3. BRYANSBURN (2,863)
- 4. RATHMORE (2,890)
- 5. SILVERSTREAM (2,531)
- 6. KILCOOLEY (2,714)
- 7. RATHGAEL (2,462)
- 8. DONAGHADEE (2,890)
- 9. GROOMSPORT (2,857)
- 10. BALLYHOLME (2,891)
- 11. HARBOUR (3,006)
- 12. BROADWAY (2,768)
- 13. BLOOMFIELD (2,804)
- 14. BALLYCROCHAN (2,602)
- 15. SILVERBIRCH (2,867)
- 16. BALLYMAGEE (2,995)

REVISED PARLIAMENTARY CONSTITUENCY BOUNDARY ———
 WARD BOUNDARY ———
 WARD TRANSFERS OUTWARDS ——— WARD TRANSFERS INWARDS ———
 Ward transfers are in relation to the Provisional Proposals

1:200,000



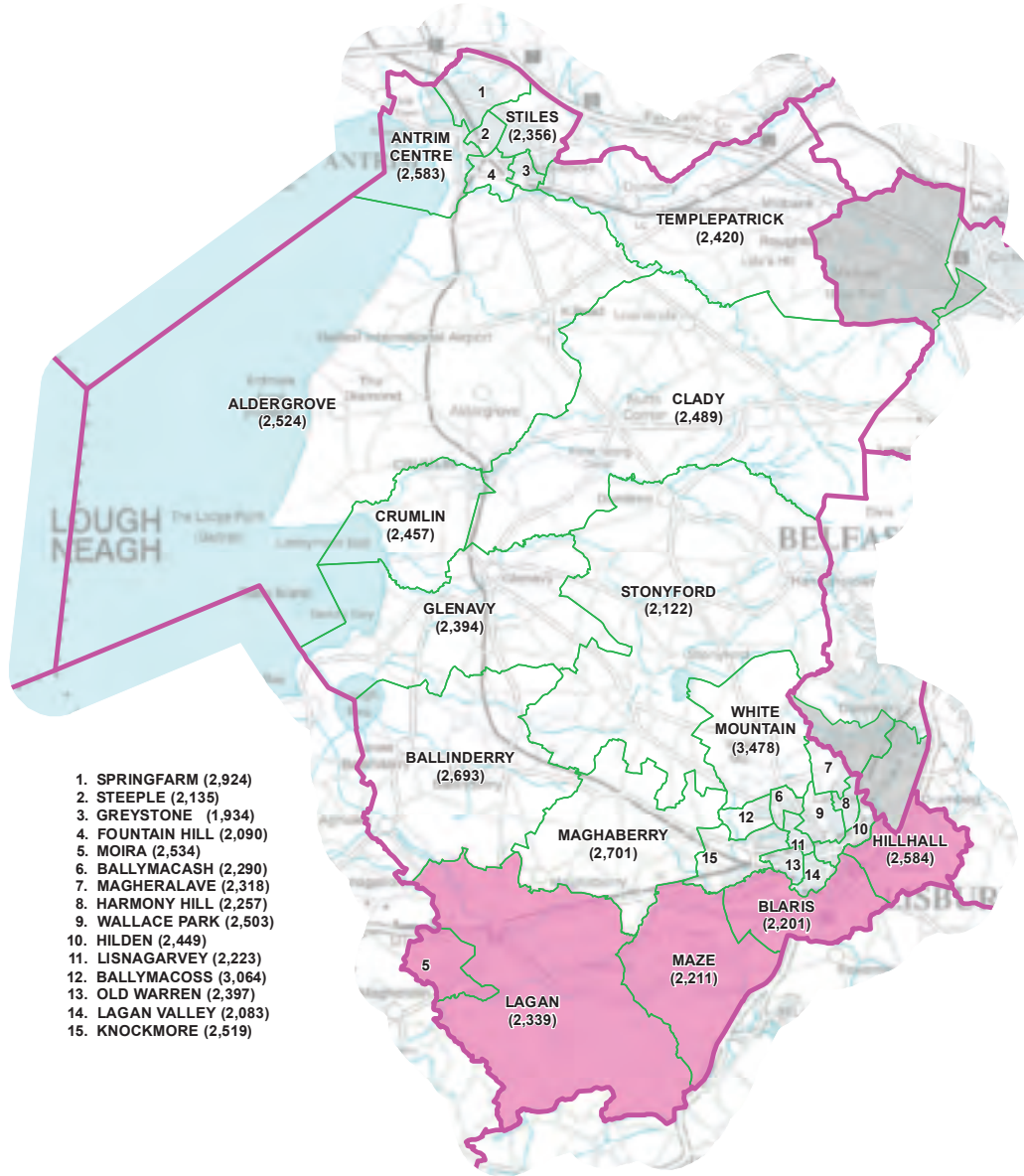
Produced by LAND & PROPERTY SERVICES,
 Lanyon Plaza, 7 Lanyon Place, Belfast, BT1 3LP.
 Website: www.finance-ni.gov.uk
 © Crown Copyright and Database Right 2018

North Down County Constituency

WARD	ELECTORATE	WARD	ELECTORATE
Ards and North Down LGD			
Ballycrochan	2,602	Groomsport	2,857
Ballygrainey	3,202	Harbour	3,006
Ballyholme	2,891	Helen's Bay	2,790
Ballymagee	2,995	Kilcooley	2,714
Ballywalter	3,161	Kircubbin	2,920
Bloomfield	2,804	Loughries	2,830
Broadway	2,768	Portaferry	2,559
Bryansburn	2,863	Portavogie	2,569
Carrowdore	2,917	Rathgael	2,462
Castle	2,772	Rathmore	2,890
Clandeboyne	2,717	Silverbirch	2,867
Cultra	2,915	Silverstream	2,531
Donaghadee	2,890	Warren	2,952

Total constituency electorate – 73,444

REVISED PROPOSAL: SOUTH ANTRIM



1. SPRINGFARM (2,924)
2. STEEPLE (2,135)
3. GREYSTONE (1,934)
4. FOUNTAIN HILL (2,090)
5. MOIRA (2,534)
6. BALLYMACASH (2,290)
7. MAGHERALAVE (2,318)
8. HARMONY HILL (2,257)
9. WALLACE PARK (2,503)
10. HILDEN (2,449)
11. LISNAGARVEY (2,223)
12. BALLYMACOSS (3,064)
13. OLD WARREN (2,397)
14. LAGAN VALLEY (2,083)
15. KNOCKMORE (2,519)

REVISED PARLIAMENTARY CONSTITUENCY BOUNDARY — — WARD BOUNDARY
 WARD TRANSFERS OUTWARDS WARD TRANSFERS INWARDS
 Ward transfers are in relation to the Provisional Proposals

1:200,000

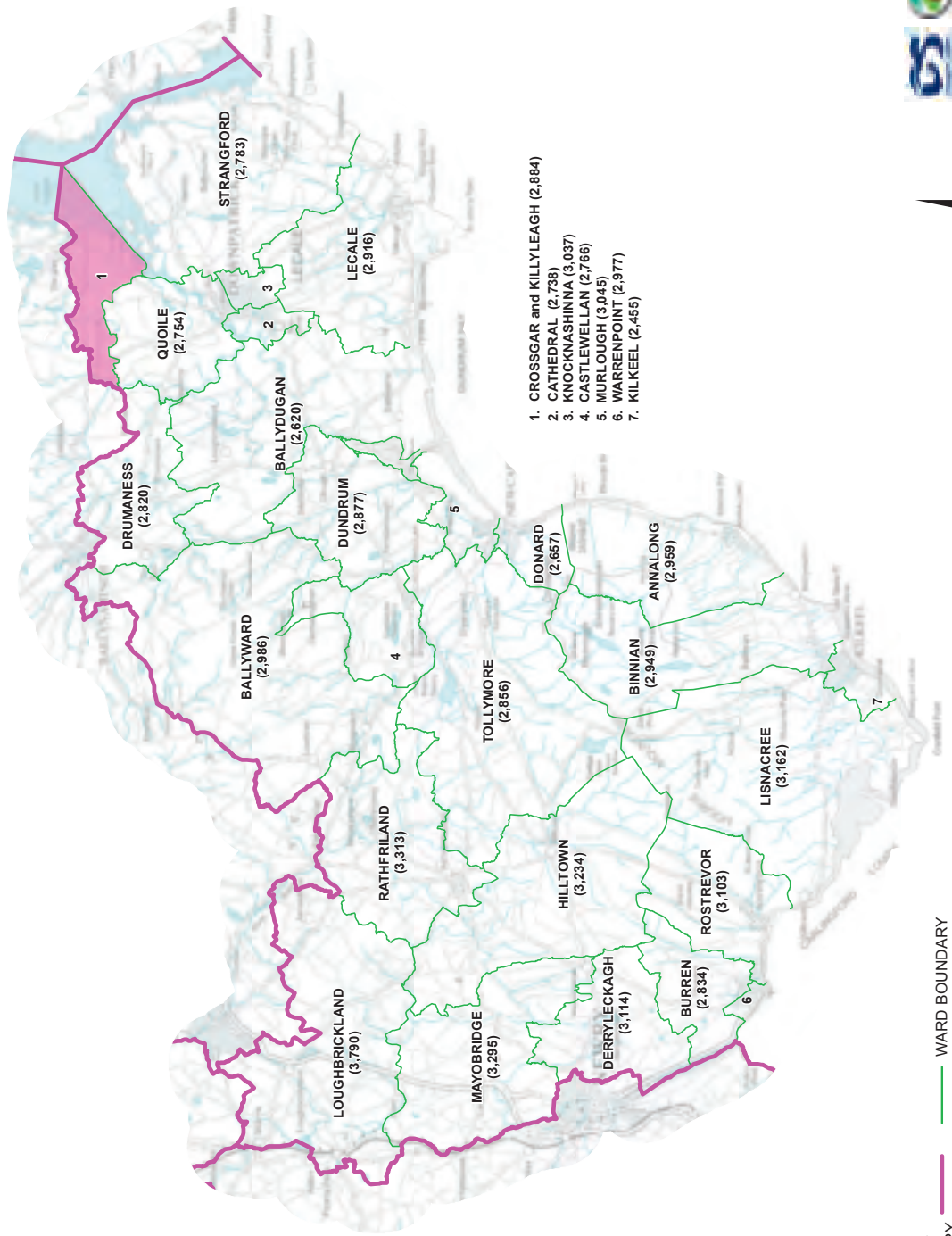
Produced by LAND & PROPERTY SERVICES,
 Lanyon Plaza, 7 Lanyon Place, Belfast, BT1 3LP.
 Website: www.finance-ni.gov.uk
 © Crown Copyright and Database Right 2018

South Antrim County Constituency

WARD	ELECTORATE	WARD	ELECTORATE
Antrim and Newtownabbey LGD			
Aldergrove	2,524	Greystone	1,934
Antrim Centre	2,583	Springfarm	2,924
Clady	2,489	Steeple	2,135
Crumlin	2,457	Stiles	2,356
Fountain Hill	2,090	Templepatrick	2,420
Lisburn and Castlereagh LGD			
Ballinderry	2,693	Lagan Valley	2,083
Ballymacash	2,290	Lisnagarvey	2,223
Ballymacoss	3,064	Maghaberry	2,701
Blaris	2,201	Magheralave	2,318
Glenavy	2,394	Maze	2,211
Harmony Hill	2,257	Moira	2,534
Hilden	2,449	Old Warren	2,397
Hillhall	2,584	Stonyford	2,122
Knockmore	2,519	Wallace Park	2,503
Lagan	2,339	White Mountain	3,478

Total constituency electorate – 73,272

REVISED PROPOSAL: SOUTH DOWN



REVISED PARLIAMENTARY CONSTITUENCY BOUNDARY
 WARD BOUNDARY
 WARD TRANSFERS INWARDS
 Ward transfers are in relation to the Provisional Proposals

1:280,000

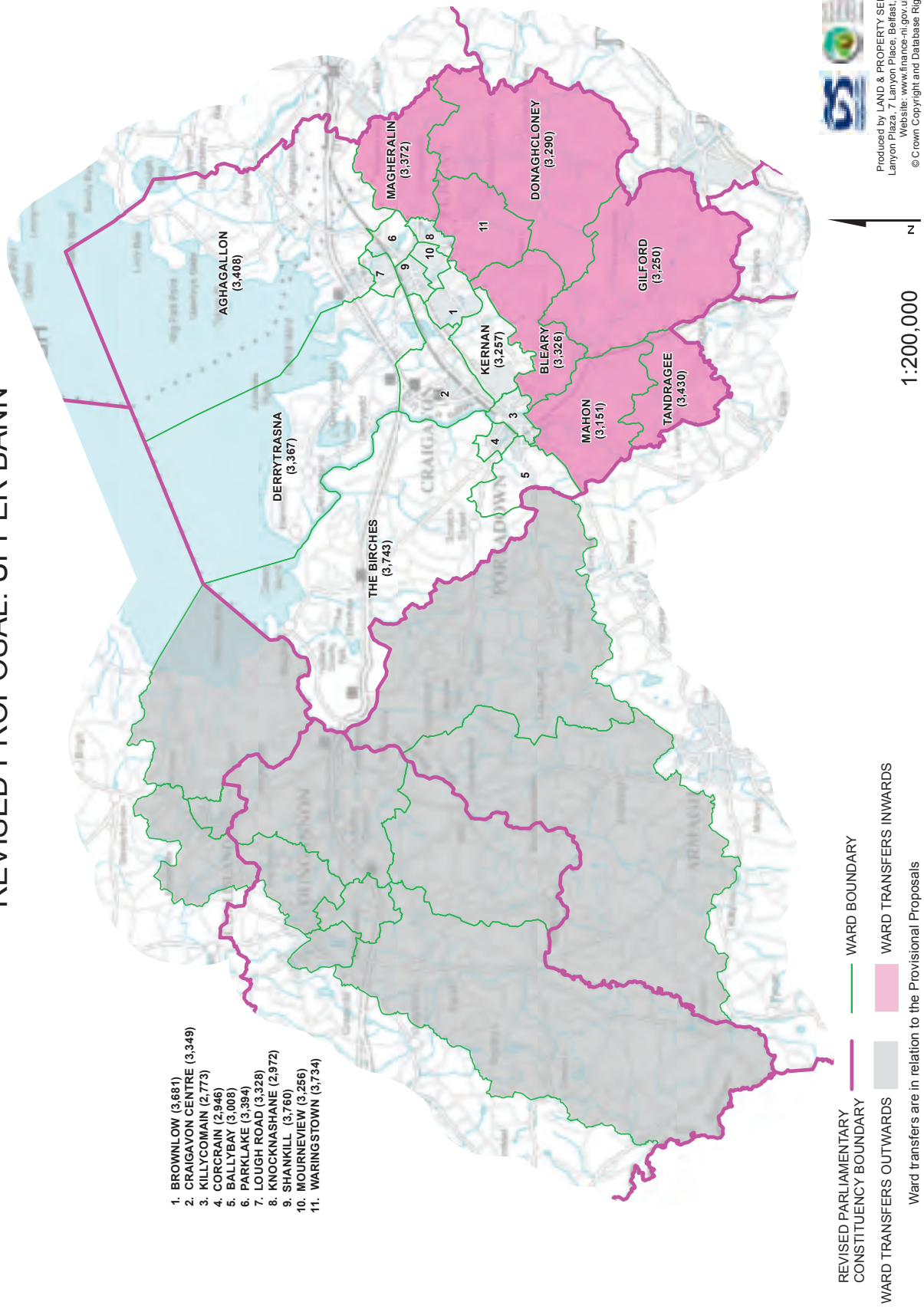
Produced by LAND & PROPERTY SERVICES,
 Lanyon Place, Lanyon Place, Belfast, BT1 3LP.
 Website: www.lps.gov.uk
 © Crown Copyright and Database Right 2018

South Down County Constituency

WARD	ELECTORATE	WARD	ELECTORATE
Armagh, Banbridge and Craigavon LGD			
Loughbrickland	3,790	Rathfriland	3,313
Newry, Mourne and Down LGD			
Annalong	2,959	Hilltown	3,234
Ballydugan	2,620	Kilkeel	2,455
Ballyward	2,986	Knocknashinna	3,037
Binnian	2,949	Lecale	2,916
Burren	2,834	Lisnacree	3,162
Castlewellan	2,766	Mayobridge	3,295
Cathedral	2,738	Murlough	3,045
Crossgar and Killyleagh	2,884	Quoile	2,754
Derryleckagh	3,114	Rostrevor	3,103
Donard	2,657	Strangford	2,783
Drumaness	2,820	Tollymore	2,856
Dundrum	2,877	Warrenpoint	2,977

Total constituency electorate – 76,924

REVISED PROPOSAL: UPPER BANN

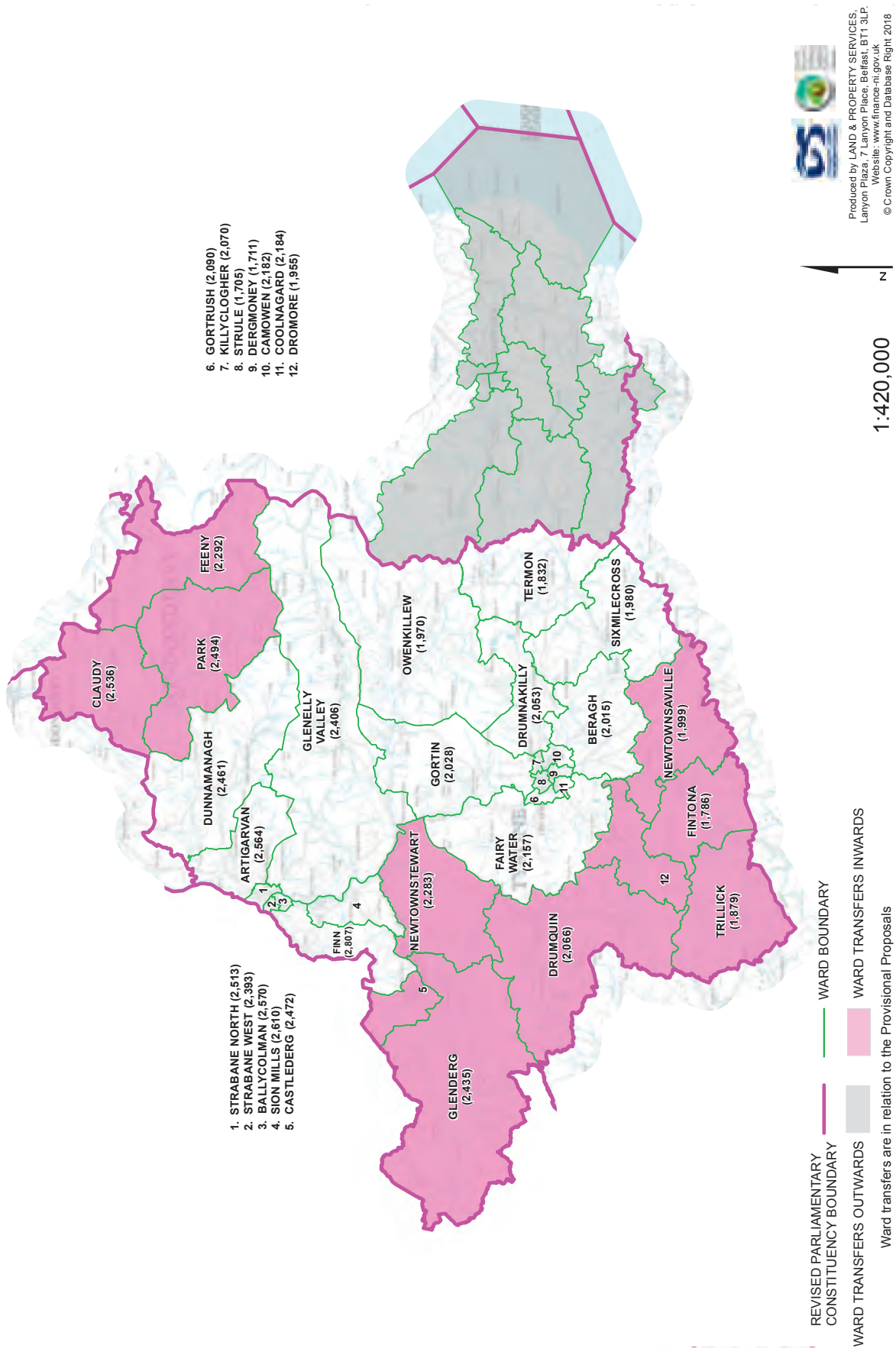


Upper Bann County Constituency

WARD	ELECTORATE	WARD	ELECTORATE
Armagh, Banbridge and Craigavon LGD			
Aghagallon	3,408	Knocknashane	2,972
Ballybay	3,008	Lough Road	3,328
Bleary	3,326	Magheralin	3,372
Brownlow	3,681	Mahon	3,151
Corcrair	2,946	Mourneview	3,256
Craigavon Centre	3,349	Parklake	3,394
Derrytrasna	3,367	Shankill	3,760
Donaghcloney	3,290	Tandragee	3,430
Gilford	3,250	The Birches	3,743
Kernan	3,257	Waringstown	3,734
Killycomain	2,773		

Total constituency electorate – 69,795

REVISED PROPOSAL: WEST TYRONE



West Tyrone County Constituency

WARD	ELECTORATE	WARD	ELECTORATE
Causeway Coast and Glens LGD			
Feeney	2,292		
Derry and Strabane LGD			
Artigarvan	2,564	Glenelly Valley	2,406
Ballycolman	2,570	Newtownstewart	2,283
Castleberg	2,472	Park	2,494
Claudy	2,536	Sion Mills	2,610
Dunnamanagh	2,461	Strabane North	2,513
Finn	2,807	Strabane West	2,393
Glenderg	2,435		
Fermanagh and Omagh LGD			
Beragh	2,015	Gortin	2,028
Camowen	2,182	Gortrush	2,090
Coolnagard	2,184	Killiclogher	2,070
Dergmoney	1,711	Newtownsaville	1,999
Dromore	1,955	Owenkillew	1,970
Drumnakilly	2,053	Sixmilecross	1,980
Drumquin	2,066	Strule	1,705
Fairy Water	2,157	Termon	1,832
Fintona	1,786	Trillick	1,879
Total constituency electorate – 70,498			

Appendix 1

Boundary Commission for Northern Ireland

The Boundary Commission for Northern Ireland is constituted in accordance with section 2 of, and Schedule 1 to, the Parliamentary Constituencies Act 1986, as amended.

The Deputy Chair of the Commission is a judge of the High Court appointed by the Lord Chief Justice of Northern Ireland. The other two Commissioners are appointed by the Secretary of State for Northern Ireland through a public appointments process. The Commission is supported in its work by a small Secretariat.

Chairman: The Speaker of the House of Commons*

Deputy Chairman: The Hon Madam Justice McBride, DBE, QC

Members: Dr William Smith
Ms Sarah Havlin

Assessors: The Chief Electoral Officer for Northern Ireland,
Ms Virginia McVea#

The Chief Survey Officer of Land and Property Services,
Mr Jim Lennon‡

The Registrar General of Births and Deaths in Northern Ireland,
Ms Siobhan Carey

The Commissioner of Valuation for Northern Ireland,
Mr Alan Brontë

Secretary: Mr Eamonn McConville

*The Deputy Chairman, by custom, presides at all meetings of the Commission and the Speaker is kept fully informed of the progress of the work of the Commission.

#Succeeded Mr Graham Shields on 23 December 2016

‡Succeeded Mr John Deyermond on 22 May 2017

Appendix 2

Parliamentary Constituencies Act 1986, as amended

SCHEDULE 2

Rules for Redistribution of Seats

Number of constituencies

1 The number of constituencies in the United Kingdom shall be 600.

Electorate per constituency

2 (1) The electorate of any constituency shall be -

(a) no less than 95% of the United Kingdom electoral quota, and

(b) no more than 105% of that quota.

(2) This rule is subject to rules 4(2), 6(3) and 7.

(3) In this Schedule the “United Kingdom electoral quota” means -

$$U/596$$

where U is the electorate of the United Kingdom minus the electorate of the constituencies mentioned in rule 6.

Allocation of constituencies to parts of the United Kingdom

3 (1) Each constituency shall be wholly in one of the four parts of the United Kingdom (England, Wales, Scotland and Northern Ireland).

(2) The number of constituencies in each part of the United Kingdom shall be determined in accordance with the allocation method set out in rule 8.

Area of constituencies

4 (1) A constituency shall not have an area of more than 13,000 square kilometres.

(2) A constituency does not have to comply with rule 2(1)(a) if -

(a) it has an area of more than 12,000 square kilometres, and

(b) the Boundary Commission concerned are satisfied that it is not reasonably possible for the constituency to comply with that rule.

Factors

- 5 (1) A Boundary Commission may take into account, if and to such extent as they think fit -
- (a) special geographical considerations, including in particular the size, shape and accessibility of a constituency;
 - (b) local government boundaries as they exist on the most recent ordinary council-election day before the Review date;
 - (c) boundaries of existing constituencies;
 - (d) any local ties that would be broken by changes in constituencies;
 - (e) the inconveniences attendant on such changes.¹
- (2) The Boundary Commission for England may take into account, if and to such extent as they think fit, boundaries of the electoral regions specified in Schedule 1 to the European Parliamentary Elections Act 2002 (ignoring paragraph 2(2) of that Schedule and the references to Gibraltar) as it has effect on the most recent ordinary council-election day before the Review date.
- (3) This rule has effect subject to rules 2 and 4.

Protected constituencies

- 6 (1) There shall be two constituencies in the Isle of Wight.
- (2) There shall continue to be -
- (a) a constituency named Orkney and Shetland, comprising the areas of the Orkney Islands Council and the Shetland Islands Council;
 - (b) a constituency named Na h-Eileanan an Iar, comprising the area of Comhairle nan Eilean Siar.
- (3) Rule 2 does not apply to these constituencies.

¹ Rule 5(1)(e) does not apply to a report due to be submitted before 1 October 2013, as specified by section 11(2) of the Parliamentary Voting System and Constituencies Act 2011

Northern Ireland

7 (1) In relation to Northern Ireland, sub-paragraph (2) below applies in place of rule 2 where -

(a) the difference between -

(i) the electorate of Northern Ireland, and

(ii) the United Kingdom electoral quota multiplied by the number of seats in Northern Ireland (determined under rule 8),

exceeds one third of the United Kingdom electoral quota, and

(b) the Boundary Commission for Northern Ireland consider that having to apply rule 2 would unreasonably impair -

(i) their ability to take into account the factors set out in rule 5(1), or

(ii) their ability to comply with section 3(2) of this Act.

(2) The electorate of any constituency shall be -

(a) no less than whichever is the lesser of -

N-A

and 95% of the United Kingdom electoral quota, and

(b) no more than whichever is the greater of -

N+A

and 105% of the United Kingdom electoral quota,

where -

N is the electorate of Northern Ireland divided by the number of seats in Northern Ireland (determined under rule 8), and

A is 5% of the United Kingdom electoral quota.

The allocation method

- 8 (1) The allocation method referred to in rule 3(2) is as follows.
- (2) The first constituency shall be allocated to the part of the United Kingdom with the greatest electorate.
- (3) The second and subsequent constituencies shall be allocated in the same way, except that the electorate of a part of the United Kingdom to which one or more constituencies have already been allocated is to be divided by -

$$2C+1$$

where C is the number of constituencies already allocated to that part.

- (4) Where the figure given by sub-paragraph (3) above is the same for two or more parts of the United Kingdom, the part to which a constituency is to be allocated shall be the one with the smaller or smallest actual electorate.
- (5) This rule does not apply to the constituencies mentioned in rule 6, and accordingly -
- (a) the electorate of England shall be treated for the purposes of this rule as reduced by the electorate of the constituencies mentioned in rule 6(1);
- (b) the electorate of Scotland shall be treated for the purposes of this rule as reduced by the electorate of the constituencies mentioned in rule 6(2).

Interpretation

- 9 (1) This rule has effect for the purposes of this Schedule.
- (2) The "electorate" of the United Kingdom, or of a part of the United Kingdom or a constituency, is the total number of persons whose names appear on the relevant version of a register of parliamentary electors in respect of addresses in the United Kingdom, or in that part or that constituency.

For this purpose the relevant version of a register is the version that is required by virtue of subsection (1) of section 13 of the Representation of the People Act 1983 to be published no later than the Review date, or would be so required but for -

- (a) any power under that section to prescribe a later date, or
- (b) subsection (1A) of that section.

- (3) “Local government boundaries” are -
- (a) in England, the boundaries of counties and their electoral divisions, districts and their wards, London boroughs and their wards and the City of London,
 - (b) in Wales, the boundaries of counties, county boroughs, electoral divisions, communities and community wards,
 - (c) in Scotland, the boundaries of local government areas and the electoral wards into which they are divided under section 1 of the Local Governance (Scotland) Act 2004, and
 - (d) in Northern Ireland, the boundaries of wards.
- (4) “Ordinary council-election day” is -
- (a) in relation to England and Wales, the ordinary day of election of councillors for local government areas;
 - (b) in relation to Scotland, the day on which the poll is held at ordinary elections of councillors for local government areas;
 - (c) in relation to Northern Ireland, the day of an election for any district council (other than an election to fill a casual vacancy).
- (5) The “review date”, in relation to a report under section 3(1) of this Act that a Boundary Commission is required (by section 3(2)) to submit before a particular date, is two years and ten months before that date.
- (6) “The United Kingdom electoral quota” has the meaning given by rule 2(3).
- (7) A reference in rule 6 to an area is to the area as it existed on the coming into force of Part 2 of the Parliamentary Voting System and Constituencies Act 2011.

Appendix 3

List of respondents

INITIAL CONSULTATION PERIOD

The Commission published its Provisional Proposals for a 12 week consultation period in September 2016, ending on 28 November 2016. As part of this consultation, four public hearings were held during October 2016 in Ballymena, Omagh, Belfast and Portadown.

Oral representations

The following made representations at the public hearings:

Ballymena – Ian Paisley MP (DUP), Jim Allister MLA (TUV), David Ford MLA (Alliance), Cllr Timothy Gaston (TUV), Cllr Colin McCusker (UUP), Dr Alasdair McDonnell MP (SDLP), Cllr Trevor Beatty (DUP), Jacqueline Douglas.

Omagh – David Ford MLA (Alliance), Dr Alasdair McDonnell MP (SDLP), Joe Byrne, Cllr Colin McCusker (UUP), Tom Elliott MP (UUP), Cllr Howard Thornton (UUP), Winston Duff, Hazel Coulter, David Rowe.

Belfast – Dr Alasdair McDonnell MP (SDLP), Cllr Colin McCusker (UUP), Billy Dickson, Kenneth Millar (Alliance), Lady Sylvia Hermon MP (Independent), Eamon Hanna (SDLP), Claire Hanna MLA (SDLP), Nigel Dodds MP (DUP), Gavin Robinson MP (DUP), Margaret Ritchie MP (SDLP), Chris McCall (Alliance), Alex Maskey MLA (Sinn Fein), Daniel Lowe.

Portadown – David Ford MLA (Alliance), Dr Alasdair McDonnell MP (SDLP), Cllr Barry Monteith (Independent), Cllr Colin McCusker (UUP), Cllr Walter Cuddy (UUP).

Transcripts of all four public hearings are available on the Commission's website at www.boundarycommission.org.uk/2018-review.

Written representations

In addition, the Commission received written submissions from:

Agnew, Philip	McDonnell MP, Dr Alasdair
Alliance Party	McFarland, Stephen William
Andrews, Paul	McInnes, David
Antrim & Newtownabbey Borough Council	McIntyre, Margaret
Bell, Kevin	McKinney, Ryan (2 responses)
Boyle, Cllr Joe	McN, Anthony
Brown, Wesley	McWhinney, David
Bush Community Cultural Group	Mid Ulster District Council
Campbell, Cormac	Moriarty, Michael
Cantellaven, Jason	Morrow, Robert
Cooke, Albert	Moygashel Residents Association
Cross, Stephen	Mulholland, Conor
Democratic Unionist Party	Mulholland, Malachy
Donaghy, Chris	Nabney, William Gordon
Drumbeg Women's Institute	Orr, Stephen Michael
Dungannon Regeneration Partnership	Pankhurst, Dale
Dunlop, Michael	Pankhurst, Kelly
Dunlop, Shauna	Ritchie MP, Margaret
Gawith, Owen	Simpson Grant Association, Dergina
Granville Residents Association	Social Democratic and Labour Party
Hanna MLA, Claire	Spratt, D
Hayfield, Harry	Torrens, Michael
Hermon MP, Lady Sylvia	Traditional Unionist Voice
Hoey, Tyler	Ulster Unionist Party
Livingstone, Richard	White, Art
Mallon, Gregory	Whitehead, Peter
Marshall, James	Whyte, Dr Nicholas

SECONDARY CONSULTATION PERIOD

On 5 September 2017, the Commission published the written and oral submissions received to its Provisional Proposals and invited further comment during a 4 week secondary consultation which ended on 2 October 2017.

Written submissions were received from the following:

Antrim & Newtownabbey Borough Council	McCandless, Councillor William
Ballybeen Improvement Group	McClurg, Cecil
Belfast City Council	McCormack, Carl
Breakaways Club	McCusker, Councillor Colin
Brown, Agnes Anne	Mid Ulster District Council
Butler MLA, Robbie	Minford, Jackson
Charter NI	Newtownabbey Arts & Cultural Network
Cowley, Prof. Philip	Patterson, Glenn
Democratic Unionist Party	Rathcoole Regeneration Group
Duff, Winston	Rathfern Community Regeneration Group
Ellis, Deborah	Sinn Fein
Haller, Terry	Thompson, Sarah
Hussey, Alderman Derek	Traditional Unionist Voice
Hussey, Ross	Trimble, Councillor Nicholas
Illegible signature 1	Ulster Unionist Party
Illegible signature 2	W, Richard
John	Whyte, Professor Nicholas
Larmour, Andrew	Wilson, Councillor Trevor
Lawson, David	
Maguire, David	
Maxwell, Ruth	

All the representations received are available to view on the Commission's website at www.boundarycommission.org.uk/2018-review

