

Northern Ireland Index of Services Quarter 2 (Apr-Jun) 2016

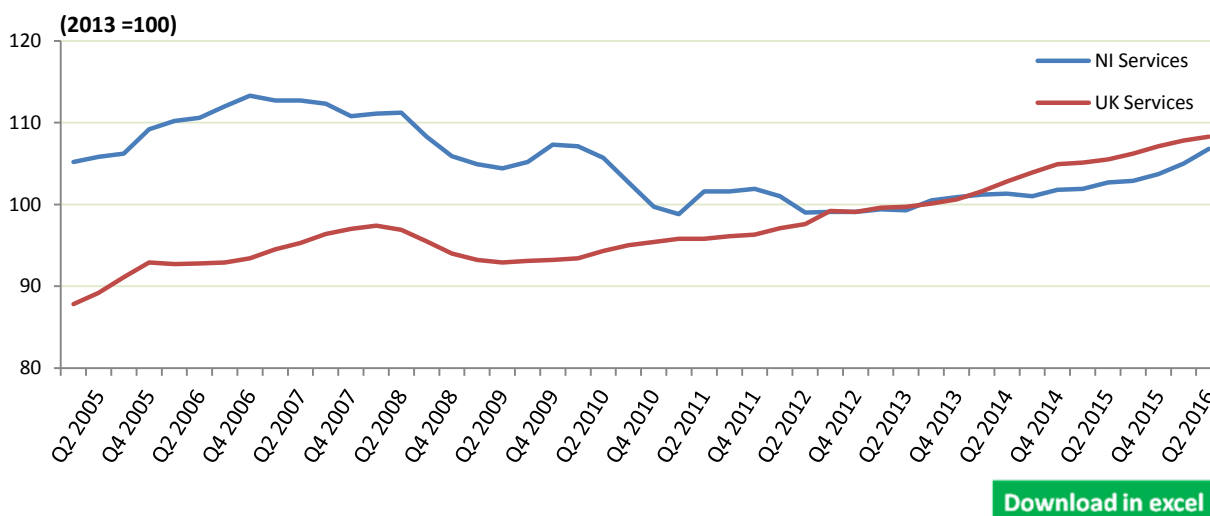


Date: 14 September 2016
Geographical Area: Northern Ireland
Theme: Economy Statistics
Frequency: Quarterly

Key points

- Provisional results from the seasonally adjusted Index of Services for the second quarter (Apr-Jun) of 2016 show that output in NI, in real terms, increased over the quarter by 1.7%, compared with an increase of 0.5% reported in the UK as a whole.
- Compared to the same period one year earlier, the NI index reported growth of 4.0% in quarter 2 (Apr-Jun) 2016, with the UK reporting an increase of 2.7% over this period. This is the thirteenth consecutive quarter of growth in NI output on this basis.
- The index has recovered by 8.1% since the recent minimum value recorded in quarter 1 (Jan-Mar) 2011, with the UK index reporting a faster recovery of 13.1% over the same time period.
- When the most recent four quarters are compared to the previous four quarters, the NI service sector reported annualised growth of 2.7% to quarter 2 (Apr-Jun) 2016.

Figure 1: Index of Services, Northern Ireland and UK



National Statistics

The United Kingdom Statistics Authority has designated these statistics as National Statistics, in accordance with the Statistics and Registration Service Act 2007 and signifying compliance with the Code of Practice for Official Statistics.

National Statistics status means that official statistics meet the highest standards of trustworthiness, quality and public value.

All official statistics should comply with all aspects of the Code of Practice for Official Statistics. They are awarded National Statistics status following an assessment by the Authority's regulatory arm. The Authority considers whether the statistics meet the highest standards of Code compliance, including the value they add to public decisions and debate.

It is a producer's responsibility to maintain compliance with the standards expected of National Statistics. If we become concerned about whether these statistics are still meeting the appropriate standards, we will discuss any concerns with the Authority promptly. National Statistics status can be removed at any point when the highest standards are not maintained, and reinstated when standards are restored.

Contents

1	Introduction and context	Page 4
2	Executive summary	Page 6
3	Services by broad industry groups:	Page 8
	Wholesale and retail trade; repair of motor vehicles and motorcycles; Accommodation and food service activities	Page 8
	Business services and finance	Page 9
	Other services	Page 10
	Transport, storage, information & communication	Page 11
4	Quarterly/annual/rolling annual average changes	Page 12
5	Background notes	Page 15

1

Introduction and context

This bulletin provides provisional data from the Index of Services (IOS) survey for Northern Ireland (NI). The IOS is an important short-term measure of change in the output of the private services sector of the economy. The contents of this report will be of interest to government policymakers, Members of the Legislative Assembly, the business community, economic commentators, academics and members of the general public with an interest in the state of the NI economy. A summary of recent uses is available on the website at <https://www.economy-ni.gov.uk/publications/further-information-ios>

The Department for the Economy (DfE) Economic Commentary (March 2016) provides an overview of the state of the Northern Ireland economy, setting it in context with the UK and Republic of Ireland. This can be found at <https://www.economy-ni.gov.uk/publications/deti-economic-commentary>

The most up-to-date official statistics on the economy and labour market, including those published on the same day as the Northern Ireland Index of Services and Index of Production, are available on the Economic Overview page of the NISRA Economic and Labour Market Statistics website at <https://www.economy-ni.gov.uk/articles/economic-overview>

The separate Northern Ireland Index of Production (IOP) provides a general measure of changes in the output of the production industries. It is based on up-to-date information about the output and sales of the production industry. Provisional figures for quarter 2 (Apr-Jun) 2016 showed that output in Northern Ireland increased by 0.6% quarterly and by 0.1% annually. The index is now 16.1% above the recent low seen in quarter 3 (Jul-Sep) 2009 (90.3). Further information and results from the NI IOP can be accessed at <https://www.economy-ni.gov.uk/topics/statistics-and-economic-research/index-production>

The Index of Services is published on a Standard Industrial Classification 2007 (SIC07) basis. IOS data prior to quarter 2 (Apr-Jun) 2011 were collected on a SIC03 basis and have been converted to approximate the SIC07 coverage.

The background notes (section 5) provide detailed information on the methodology used to produce the statistics as well as information on the quality and accuracy of the data. This bulletin contains results for the service sector as a whole, for wholesale and retail trade; repair of motor vehicles and motorcycles, accommodation and food service activities, for transport, storage, information and communication, for business services and finance and for other services sub-sectors. All services sector series are seasonally adjusted on a 2013=100 basis, using X13 Arima, giving data up to the most recent available quarter (Apr-Jun 2016).

The private service sector is dominated by the business services and finance and the wholesale and retail trade; repair of motor vehicles and motorcycles, accommodation and food service activities sub-sectors. Together these account for approximately 69% of the sector's total private services Gross Value Added (GVA) at 2013.

Comparative UK data (produced by the Office for National Statistics (ONS)) are presented where these are available. The latest ONS IOS results are available at <http://www.ons.gov.uk/economy/economicoutputandproductivity/output>

This publication provides three measures of growth for the index. The quarter-on-quarter change provides the most recent measure of how the sector is changing. It is appropriate to compare consecutive quarters as the indices are seasonally adjusted to remove the effects of changes in output as a result of the time of the year. We also provide comparisons with the same quarter one year ago and a comparison of the most recent twelve months with the twelve months before. The quarterly comparison over the year provides an additional control on the seasonal effects. The comparison of the rolling annual average is useful for identifying changes in output over a longer time period than the other two approaches.

Northern Ireland services

Revisions

Results are provisional and subject to revision as more up-to-date data become available (e.g. through late returns). Figures can also change as a result of the seasonal adjustment factors, methodological changes or changes to classifications.

Date of next publication

The next Northern Ireland Index of Services publication is planned for 14th December 2016.

2

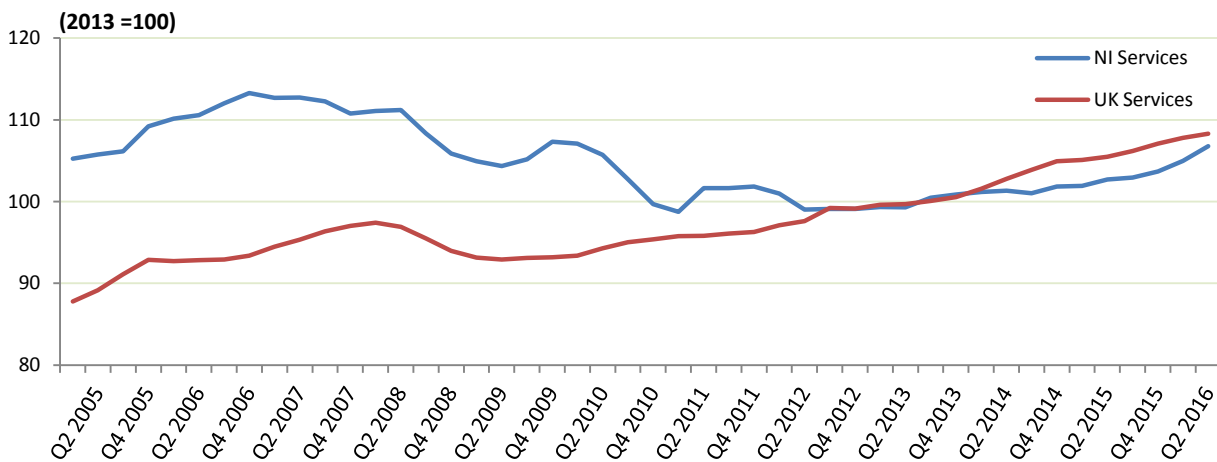
Executive summary

Provisional results for quarter 2 (Apr-Jun) 2016

Provisional results from the Index of Services for the second quarter of 2016 (Apr-Jun) show that output in NI increased by 1.7% over the quarter, compared with an increase of 0.5% reported in the UK as a whole. The NI index has reported a total of seven consecutive periods of growth to quarter 2 (Apr-Jun) 2016. The Index of Production reported an increase of 0.6% over the same quarter (quarter 2 (Apr-Jun) 2016)

<https://www.economy-ni.gov.uk/topics/statistics-and-economic-research/index-production>

Figure 2: Index of Services, Northern Ireland and UK



[Download in excel](#)

Table 1: Index of Services percentage change, Northern Ireland and UK

	NI	UK
Percentage change compared to:		
Previous quarter	1.7%	0.5%
Same quarter one year ago	4.0%	2.7%
Most recent four quarters compared to previous four quarters	2.7%	2.4%

There has been an 8.1% increase in the NI index from the recent low point in quarter 1 (Jan-Mar) 2011, with the UK index reporting a faster recovery of 13.1% over the same time period.

However, NI private service sector output remains below (5.7%) the peak recorded in the fourth quarter (Oct-Dec) of 2006, whilst the UK reported an increase of 16.0% over the same period.

Services subsections

The sub-sectors in Northern Ireland make different contributions to the changes in the overall index.

Table 2: Index of Services percentage change by broad industry group, Northern Ireland

	G&I	H&J	KLMN	PQRS
Relative weight	35.5%	13%	33.5%	18%
Percentage change compared to:				
Previous quarter	2.0%	2.7%	0.4%	0.1%
Same quarter one year ago	3.9%	4.7%	2.4%	0.3%
Most recent four quarters compared to previous four quarters	3.3%	4.2%	0.0%	-0.7%

Over the quarter, all broad industry group indices increased: the wholesale and retail trade; repair of motor vehicles and motorcycles; accommodation and food service activities (G&I) sector (2.0%), transport, storage, information & communication (H&J) sector (2.7%), the business services and finance (KLMN) sector (0.4%), and the 'other' services (PQRS) sector (0.1%).

Over the year, all broad industry group indices increased: the wholesale and retail trade; repair of motor vehicles and motorcycles; accommodation and food service activities (G&I) sector (3.9%), business services and finance (KLMN) sector (2.4%), the transport, storage, information & communication (H&J) sector (4.7%), and the 'other' services (PQRS) sector (0.3%).

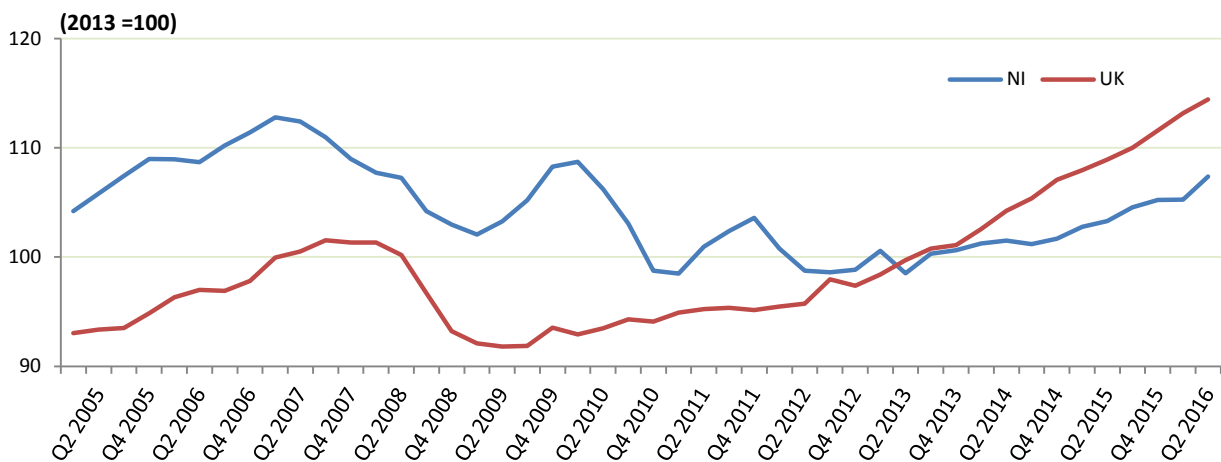
Over the latest four quarters, two broad industry group indices increased: the wholesale and retail trade; repair of motor vehicles and motorcycles; accommodation and food service activities (G&I) sector (3.3%) and the transport, storage, information & communication (H&J) sector (4.2%). There was a decrease over the latest four quarters in the 'other' services (PQRS) sector (-0.7%). The business services and finance (KLMN) sector reported no change on this basis (0.0%).

3

Services by broad industry groups

This section focuses on the performance of the overall service sector and the main industry categories of which it is comprised. The private service sector is dominated by the (i) business services and finance and (ii) wholesale and retail trade; repair of motor vehicles and accommodation and food service activities sub-sectors. Together these account for approximately 69% of the sector’s total private services Gross Value Added at 2013. The sub-sectors are listed in order of importance of the contribution made to the quarterly change in the overall Index of Services.

Figure 3: Wholesale and retail trade; repair of motor vehicles and motorcycles; accommodation and food service activities – SIC07 Sections G & I (weight = 35.5%) (seasonally adjusted series), Northern Ireland and UK



[Download in excel](#)

Table 3: Wholesale and retail trade; repair of motor vehicles and motorcycles; Accommodation and food service activities percentage change, Northern Ireland and UK

	NI	UK
Percentage change compared to:		
Previous quarter	2.0%	1.1%
Same quarter one year ago	3.9%	5.0%
Most recent four quarters compared to previous four quarters	3.3%	4.6%

The latest quarterly increase in this sector of 2.0% compares to an increase of 1.1% for the UK as a whole. In NI, output has risen by 3.9% over the year compared to a 5.0% increase in the UK.

Figure 4: Business services and finance – SIC07 Sections K-N (weight = 33.5%) (seasonally adjusted series), Northern Ireland and UK

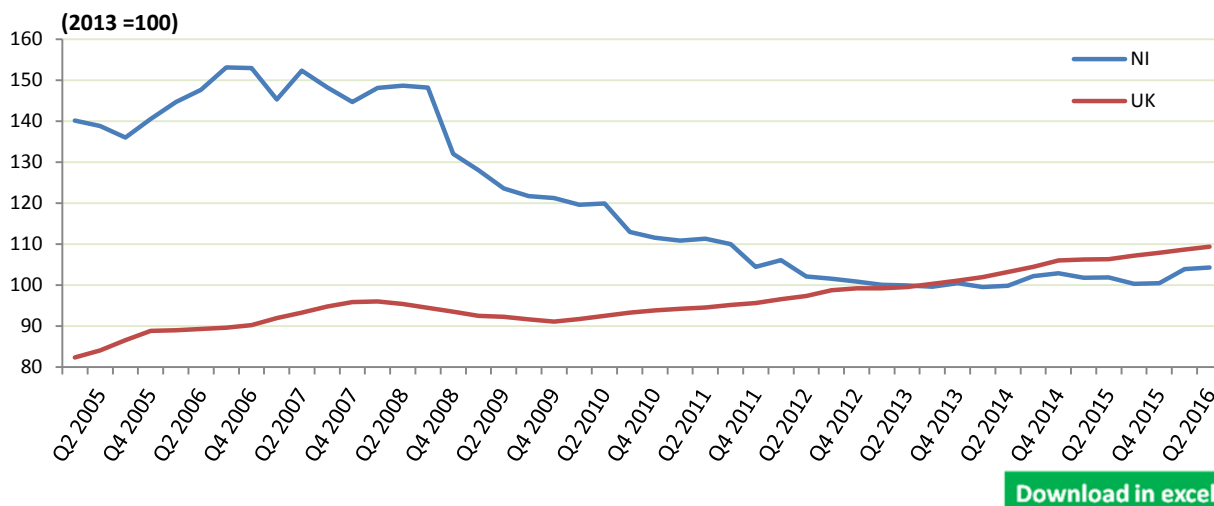


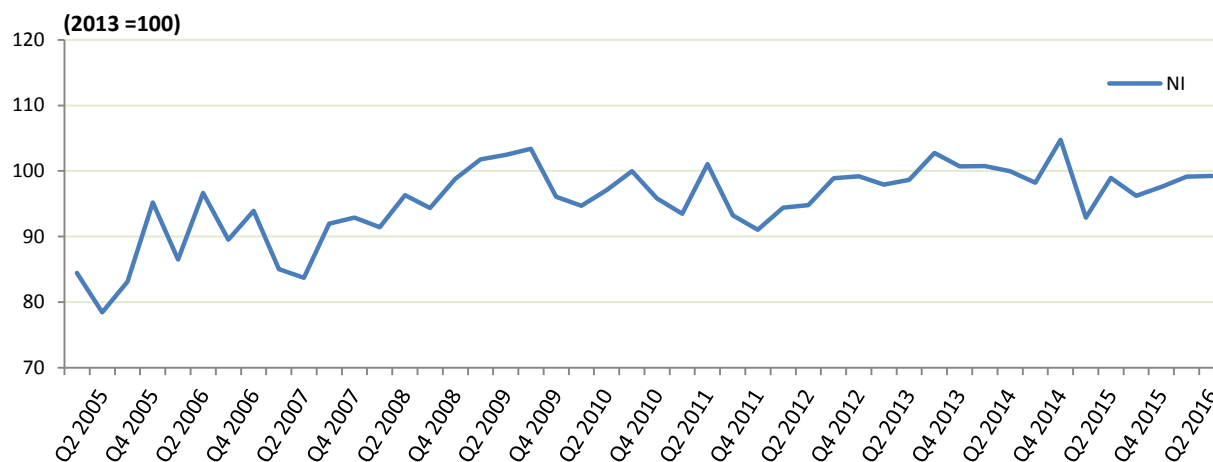
Table 4: Business services and finance percentage change, Northern Ireland and UK

	NI	UK
Percentage change compared to:		
Previous quarter	0.4%	0.6%
Same quarter one year ago	2.4%	2.8%
Most recent four quarters compared to previous four quarters	0.0%	2.3%

The seasonally adjusted index for business services and finance, which includes financial services and real estate activities shows that output in NI increased over the quarter (0.4%) and over the year (2.4%). This compares with a 0.6% quarterly rise and a 2.8% annual rise in the UK.

On a rolling annual average basis, the NI index reported no change in output (0.0%) to quarter 2 (Apr-Jun) 2016.

**Figure 5: Other services – SIC07 Sections P-S (weight = 18%)
(seasonally adjusted series), Northern Ireland**



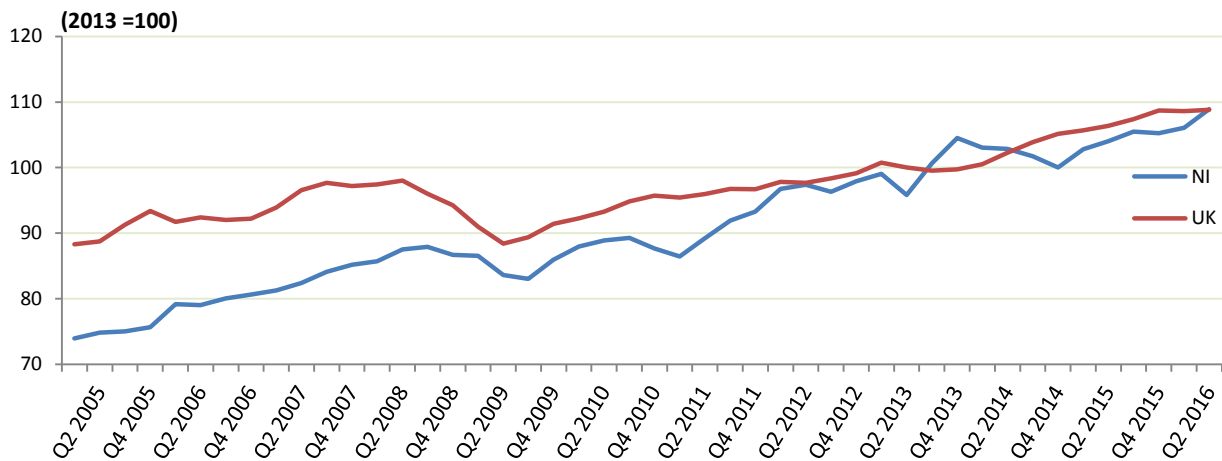
[Download in excel](#)

Table 5: Other services percentage change, Northern Ireland

	NI
Percentage change compared to:	
Previous quarter	0.1%
Same quarter one year ago	0.3%
Most recent four quarters compared to previous four quarters	-0.7%

The seasonally adjusted 'other' services index has reported a slight increase over the quarter (0.1%) and over the year (0.3%). On a rolling annual average basis, this is the sixth quarterly decline following consecutive growth from quarter 4 (Oct-Dec) 2012 to quarter 4 (Oct-Dec) 2014 inclusive.

Figure 6: Transport, storage, information & communication – SIC07 Sections H & J (Weight = 13%) (seasonally adjusted series), Northern Ireland and UK



[Download in excel](#)

Table 6: Transport, storage, information & communication percentage change, Northern Ireland and UK

	NI	UK
Percentage change compared to:		
Previous quarter	2.7%	0.2%
Same quarter one year ago	4.7%	2.3%
Most recent four quarters compared to previous four quarters	4.2%	3.0%

The index for this sector reported an increase over the quarter of 2.7% compared with an increase of 0.2% for the UK. The NI index rose by 4.7% over the year whereas the UK index rose by 2.3% over the same time period.

On a rolling annual average basis, the index for this sector in Northern Ireland increased by 4.2% over the last four quarters when compared with the previous four quarters; the UK increased by 3.0% as a whole.

4

Quarterly/annual/rolling annual average changes

Table 7: Index of Services – Quarterly, annual and rolling annual average¹ changes by sector (seasonally adjusted), Northern Ireland

		All Services, Sections G-S			Wholesale, retail, repair, Accommodation & food services – Sections G&I (Weight ² = 35.5%)			Transport, storage, information & communication – Sections H & J (weight ² = 13%)			Business services and finance – Sections K-N (weight ² = 33.5%)			Other services – Sections P-S (weight ² = 18%)							
		Index	% Change			Index	% Change			Index	% Change			Index	% Change						
			Quarter	Annual	Rolling		Quarter	Annual	Rolling		Quarter	Annual	Rolling		Quarter	Annual	Rolling	Quarter	Annual	Rolling	
2005	Q1	105.2	-	-	-	104.2	-	-	-	73.9	-	-	-	140.1	-	-	-	84.4	-	-	-
	Q2	105.8	0.5	-	-	105.8	1.5	-	-	74.8	1.2	-	-	138.9	-0.9	-	-	78.4	-7.1	-	-
	Q3	106.2	0.4	-	-	107.4	1.5	-	-	75.0	0.3	-	-	136.0	-2.1	-	-	83.1	6.0	-	-
	Q4	109.2	2.9	-	-	109.0	1.5	-	-	75.6	0.8	-	-	140.5	3.3	-	-	95.2	14.5	-	-
2006	Q1	110.2	0.9	4.7	-	108.9	-0.1	4.5	-	79.2	4.6	7.0	-	144.7	3.0	3.3	-	86.5	-9.1	2.4	-
	Q2	110.6	0.4	4.5	-	108.7	-0.2	2.7	-	79.0	-0.2	5.6	-	147.7	2.0	6.4	-	96.6	11.8	23.2	-
	Q3	112.0	1.3	5.5	-	110.2	1.4	2.6	-	80.0	1.3	6.7	-	153.1	3.7	12.6	-	89.5	-7.3	7.7	-
	Q4	113.3	1.1	3.7	4.6	111.4	1.1	2.2	3.0	80.6	0.8	6.6	6.5	153.0	-0.1	8.9	7.7	93.9	4.9	-1.3	7.4
2007	Q1	112.7	-0.5	2.3	4.0	112.8	1.2	3.5	2.8	81.3	0.8	2.7	5.3	145.3	-5.0	0.4	7.0	85.0	-9.5	-1.7	6.4
	Q2	112.7	0.1	2.0	3.4	112.4	-0.3	3.4	3.0	82.4	1.4	4.3	5.0	152.3	4.8	3.2	6.1	83.7	-1.5	-13.4	-2.6
	Q3	112.3	-0.4	0.2	2.0	111.0	-1.3	0.7	2.5	84.1	2.0	5.1	4.6	148.3	-2.6	-3.2	2.2	91.9	9.8	2.7	-3.6
	Q4	110.8	-1.3	-2.2	0.5	109.0	-1.8	-2.2	1.3	85.2	1.3	5.6	4.4	144.6	-2.5	-5.5	-1.3	92.9	1.0	-1.1	-3.6
2008	Q1	111.1	0.3	-1.4	-0.4	107.7	-1.2	-4.5	-0.7	85.7	0.7	5.5	5.1	148.1	2.4	1.9	-1.0	91.4	-1.5	7.6	-1.4
	Q2	111.2	0.1	-1.4	-1.2	107.2	-0.4	-4.6	-2.7	87.5	2.1	6.2	5.6	148.6	0.3	-2.4	-2.3	96.3	5.3	15.1	5.8
	Q3	108.3	-2.6	-3.5	-2.1	104.2	-2.8	-6.1	-4.3	87.9	0.5	4.6	5.5	148.2	-0.3	-0.1	-1.6	94.3	-2.0	2.6	5.8
	Q4	105.9	-2.3	-4.4	-2.7	103.0	-1.2	-5.5	-5.2	86.7	-1.4	1.8	4.5	132.0	-10.9	-8.7	-2.3	98.8	4.7	6.4	7.7

¹ The change in the rolling annual average measures the change in the average of the latest four quarters against the same four quarters one year previous.

² The regional GVA weights relate to 2013.

Table 7 (cont): Index of Services – Quarterly, annual and rolling annual average¹ changes by sector (seasonally adjusted), Northern Ireland

		All Services, Sections G-S				Wholesale, retail, repair, Accommodation & food services – Sections G & I (weight ² = 35.5%)				Transport, storage, information & communication – Sections H & J (weight ² = 13%)				Business services and finance – Sections K-N (weight ² = 33.5%)				Other services – Sections P-S (weight ² = 18%)			
		Index	% Change			Index	% Change			Index	% Change			Index	% Change			Index	% Change		
			Quarter	Annual	Rolling		Quarter	Annual	Rolling		Quarter	Annual	Rolling		Quarter	Annual	Rolling		Quarter	Annual	Rolling
2009	Q1	104.9	-0.9	-5.5	-3.7	102.1	-0.9	-5.2	-5.4	86.6	-0.1	1.0	3.3	128.0	-3.0	-13.6	-6.2	101.8	3.0	11.3	8.7
	Q2	104.4	-0.6	-6.2	-4.9	103.3	1.2	-3.7	-5.1	83.6	-3.4	-4.4	0.7	123.6	-3.5	-16.8	-9.8	102.5	0.7	6.4	6.7
	Q3	105.2	0.8	-2.9	-4.8	105.2	1.9	1.0	-3.4	83.0	-0.7	-5.6	-1.9	121.7	-1.5	-17.8	-14.3	103.4	0.9	9.6	8.4
	Q4	107.3	2.1	1.3	-3.4	108.3	2.9	5.1	-0.8	86.0	3.5	-0.8	-2.5	121.2	-0.4	-8.2	-14.3	96.1	-7.1	-2.8	6.0
2010	Q1	107.1	-0.2	2.0	-1.5	108.7	0.4	6.5	2.2	87.9	2.3	1.6	-2.3	119.6	-1.3	-6.6	-12.7	94.7	-1.4	-7.0	1.4
	Q2	105.7	-1.3	1.3	0.4	106.2	-2.3	2.9	3.9	88.9	1.0	6.3	0.3	119.9	0.2	-3.0	-9.3	97.1	2.6	-5.2	-1.6
	Q3	102.7	-2.8	-2.3	0.6	103.1	-3.0	-2.1	3.1	89.3	0.5	7.5	3.6	112.9	-5.8	-7.2	-6.3	100.0	2.9	-3.3	-4.6
	Q4	99.7	-3.0	-7.1	-1.5	98.8	-4.2	-8.8	-0.5	87.7	-1.8	2.0	4.3	111.6	-1.2	-7.9	-6.2	95.8	-4.1	-0.2	-4.0
2011	Q1	98.8	-1.0	-7.8	-4.0	98.5	-0.3	-9.4	-4.5	86.5	-1.4	-1.7	3.4	110.9	-0.6	-7.3	-6.3	93.5	-2.4	-1.3	-2.6
	Q2	101.6	2.9	-3.9	-5.3	100.9	2.5	-5.0	-6.3	89.2	3.2	0.4	2.0	111.3	0.4	-7.2	-7.4	101.0	8.1	4.0	-0.2
	Q3	101.6	0.0	-1.1	-5.0	102.4	1.4	-0.6	-6.0	91.9	3.0	2.9	0.9	110.0	-1.2	-2.6	-6.3	93.2	-7.7	-6.7	-1.1
	Q4	101.9	0.2	2.1	-2.7	103.6	1.2	4.9	-2.7	93.3	1.5	6.4	2.0	104.4	-5.1	-6.4	-5.9	91.1	-2.3	-5.0	-2.3
2012	Q1	101.0	-0.9	2.2	-0.2	100.8	-2.7	2.3	0.3	96.7	3.7	11.9	5.4	106.1	1.6	-4.3	-5.2	94.4	3.7	1.0	-1.7
	Q2	99.0	-1.9	-2.6	0.2	98.8	-2.0	-2.2	1.1	97.4	0.7	9.1	7.6	102.1	-3.8	-8.3	-5.4	94.8	0.4	-6.2	-4.3
	Q3	99.1	0.1	-2.5	-0.2	98.6	-0.2	-3.7	0.3	96.3	-1.1	4.8	8.0	101.5	-0.6	-7.7	-6.7	98.9	4.3	6.1	-1.1
	Q4	99.1	0.0	-2.7	-1.4	98.8	0.3	-4.6	-2.1	97.9	1.7	5.0	7.6	100.9	-0.7	-3.4	-6.0	99.2	0.3	8.9	2.2
2013	Q1	99.4	0.3	-1.6	-2.3	100.6	1.7	-0.2	-2.7	99.0	1.2	2.4	5.2	100.1	-0.8	-5.7	-6.3	97.9	-1.3	3.7	2.9
	Q2	99.3	-0.1	0.3	-1.6	98.5	-2.0	-0.2	-2.2	95.8	-3.2	-1.6	2.6	99.9	-0.2	-2.2	-4.8	98.7	0.7	4.1	5.7
	Q3	100.5	1.2	1.4	-0.7	100.3	1.8	1.7	-0.9	100.6	5.0	4.5	2.5	99.6	-0.3	-1.9	-3.3	102.7	4.1	3.9	5.1
	Q4	100.9	0.4	1.8	0.5	100.6	0.3	1.8	0.8	104.5	3.8	6.7	3.0	100.5	0.9	-0.4	-2.6	100.7	-2.0	1.5	3.3

¹ The change in the rolling annual average measures the change in the average of the latest four quarters against the same four quarters one year previous.

² The regional GVA weights relate to 2013.

Table 7 (cont): Index of Services – Quarterly, annual and rolling annual average¹ changes by sector (seasonally adjusted), Northern Ireland

		All Services, Sections G-S				Wholesale, retail, repair, Accommodation & food services – Sections G & I (weight ² = 35.5%)				Transport, storage, information & communication – Sections H & J (weight ² = 13%)				Business services and finance – Sections K-N (weight ² = 33.5%)				Other services – Sections P-S (weight ² = 18%)			
		Index	% Change			Index	% Change			Index	% Change			Index	% Change			Index	% Change		
			Quarter	Annual	Rolling		Quarter	Annual	Rolling		Quarter	Annual	Rolling		Quarter	Annual	Rolling		Quarter	Annual	Rolling
2015	Q1	101.9	0.1	0.8	1.1	102.8	1.1	1.5	1.6	102.8	2.7	-0.3	0.8	101.8	-1.0	2.3	1.8	92.9	-11.3	-7.8	-1.7
	Q2	102.7	0.7	1.4	0.9	103.3	0.5	1.8	1.3	104.0	1.2	1.1	-0.6	101.9	0.1	2.0	2.3	98.9	6.5	-1.0	-2.3
	Q3	102.9	0.2	1.9	1.2	104.6	1.2	3.3	1.9	105.5	1.4	3.7	0.0	100.3	-1.6	-1.9	1.2	96.2	-2.8	-2.0	-1.7
	Q4	103.7	0.7	1.8	1.5	105.2	0.6	3.5	2.5	105.2	-0.3	5.2	2.4	100.4	0.2	-2.3	0.0	97.6	1.4	-6.9	-4.5
2016	Q1	105.0	1.2	3.0	2.0	105.3	0.0	2.4	2.8	106.1	0.8	3.2	3.3	103.9	3.4	2.1	0.0	99.1	1.6	6.7	-1.0
	Q2	106.8	1.7	4.0	2.7	107.4	2.0	3.9	3.3	108.9	2.7	4.7	4.2	104.3	0.4	2.4	0.0	99.2	0.1	0.3	-0.7
	Q3																				
	Q4																				

[Download in excel](#)

¹ The change in the rolling annual average measures the change in the average of the latest four quarters against the same four quarters one year previous.

² The regional GVA weights relate to 2013.

5

Background notes

Background

The experimental Index of Services (IOS) was first published in Northern Ireland on 18 May 2005. Following an assessment by the UK Statistics Authority, the Index of Services was designated as a National Statistic on 5 August 2011. It is published quarterly and is designed to provide a general measure of changes in the output of the private sector service industries in Northern Ireland (this is defined as Standard Industrial Classification 2007 (SIC07) sections G to S). Based on employee jobs, in 2013 these private sector service industries accounted for 60% of all service sector Regional Gross Value Added (GVA). See link to Regional GVA information

<http://www.ons.gov.uk/economy/grossvalueaddedgva/bulletins/regionalgrossvalueaddedincomeapproach/december2016>

Index numbers

An index number is a convenient form of expressing a series in a way that makes it easier to see changes in that series. The numbers in the series are expressed relatively, with one number in that series chosen to be the 'base' (usually expressed as 100) and other numbers being measured relative to that base. Index numbers have the advantage that they allow different types of data to be combined on a consistent basis, e.g. deflated current price data with volume data. The aim of the Index of Services is to provide a reliable indicator of short-term changes in the output of the service sector. Index numbers are a very good way of communicating this message. For example, the Index of Services quarter 2 (Apr-Jun) 2016 value of 106.8 means that the level of output then was 6.8% higher than in 2013 which had a base year value of 100. The NI IOS is a Laspeyres volume index. The UK economic accounts are based on the European System of Accounts (ESA), which in turn is based on the UN System of Accounts (SNA). The ESA-preferred type of output indicator is one that measures deflated gross output (or turnover) for an industry. These use an approximate price change estimator to remove the effects of inflation. For this reason, we and the ONS, use a Laspeyres volume index (as opposed to Paasche, Lowe or Fisher indices). The ONS paper, link following, on the Methodology of the Monthly Index of Services (Annex A: Mathematical Formulation of the Index of Services) gives a good explanation of Index numbers theory.

<http://webarchive.nationalarchives.gov.uk/20160105160709/http://www.ons.gov.uk/ons/guide-method/user-guidance/index-of-services-methodology/index-construction/index.html>

Index sample

The IOS sample was refreshed for quarter 1 (Jan-Mar) 2014 and was drawn on a SIC07 basis. The sample was boosted from around 1,600 businesses and it is now approximately 3,300 companies. As a statutory survey, the response rate is more than 80%. The sample of service industries is selected directly from the Inter-Departmental Business Register (IDBR), by stratifying companies by industry and company size. The sample consists of a census of dominant companies and a Neyman stratified random sample of the remaining companies. The census element consists of all companies employing 100 or more employees and those employing 0 to 99 employees and having a turnover of £10 million or more. It is desirable to include these low employment high turnover companies in the sample in order to provide a more comprehensive picture of the overall economy. This sample has been designed to give sufficiently accurate results, yet keep the total costs to businesses to a minimum.

Questionnaires were issued to both the new and existing businesses on each sample, for three quarters, as a means to calculate a link factor between the old sample (up to and including quarter 4 (Oct-Dec) 2013) and the new sample (from quarter 1 (Jan-Feb) 2014 onwards). With advice from Office for National Statistics Methodologists, as the result of a successful Quality Improvement Fund, a methodology has been developed in order to integrate the new samples without making significant changes to the back series data, thus giving a meaningful index.

Data collection, validation and Index calculation

The survey forms are issued quarterly, immediately after the period to which they relate. For example, forms are issued in October asking for information relating to July to September. Companies are asked to provide their turnover for the previous quarter. Data validation is carried out ensuring that data fall within the expected limits, contacting the company where appropriate for clarification.

As of last quarter (quarter 1 2016), a Quarterly Business Survey form is now issued to all businesses who previously would have received an Index of Services form and a Quarterly Employment Survey form. Companies are also asked to provide employment and turnover information at the same time. This combined survey form, coupled with the roll-out of an 'eForm' (designed to collect data electronically) is intended to reduce the burden to businesses currently receiving two separate forms at different times.

The overall Index of Services is calculated by weighting together industry level indices that describe the activity of an industry sector using the Standard Industrial Classification. This is done using relative shares of regional GVA on an annual basis. The annual weights from regional GVA are more up to date and their use is in line with recommendations from the Office for National Statistics (ONS).

The Northern Ireland Index of Services is annually chain-linked (Chain-linking involves the linking of growth estimates between different time periods in order to produce a continuous time series) using private sector GVA estimates derived from regional accounts using the fourth quarter of the preceding year as the link period. Inaccuracies caused by the assumption of a stable relationship between GVA and turnover are reduced using this methodology. When annual weights are used the assumption only has to be maintained from one year to the next year. A paper on annual chain-linking from ONS is available at

<http://www.ons.gov.uk/ons/rel/elmr/economic-trends--discontinued-/no--630--may-2006/methodological-note--annual-chain-linking.pdf>

The standard method for linking two series (for example one based on a SIC03 sample and one based on a SIC07 sample) is to calculate the index under the old and new circumstances over some link period, and then apply the growth of the subsequent new series to the old series. As the relationship of both samples to the IDBR was known, the IDBR was used to provide the link period. Thus, the ratio of the IDBR turnover for quarter 1 (Jan-Mar) 2011 and quarter 2 (Apr-Jun) 2011 is known. We have the quarter 2 (Apr-Jun) 2011 value (SIC07) and the quarter 1 (Jan-Mar) 2011 value (converted from SIC03 to SIC07). We can, therefore, create the following link factor:

$$\text{link factor} = \frac{(\text{Q2 2011 sample estimate} * \text{IDBR Q1 2011 value})}{(\text{Q1 2011 sample estimate} * \text{IDBR Q2 2011 value})}$$

This can then be applied to the converted back series, thus retaining the previous growth rates.

For quarter 1 (Jan-Mar) 2014 and quarter 2 (Apr-Jun) 2014, questionnaires were issued to companies in both the existing sample and the new sample, thus allowing a link factor to be calculated based on the average percentage change between the two. This link factor was then applied to each of the quarterly turnover back series (grossed & deflated), in order to give a series of the same magnitude as the new sample series (from quarter 1 (Jan-Mar) 2014 onwards).

Deflation

All series, unless otherwise quoted, are measured at a constant market price (2013 = 100). Deflators adjust the value series to take out the effect of price change to give the volume series. Details on the changes to the ONS deflators methodology can be found at the following link <http://www.ons.gov.uk/ons/guide-method/method-quality/specific/economy/national-accounts/articles/deflation-improvements-in-the-uk-national-accounts.pdf>

Seasonal adjustment

The index numbers in this statistical bulletin are all seasonally adjusted. This aids interpretation by removing annually recurring fluctuations, for example due to holidays or other regular seasonal patterns. All IOS time series are checked on an annual basis (December in each year) using X-13 ARIMA SEATS for evidence of seasonality, and those series where seasonality is detected are adjusted using X-13 ARIMA SEATS in order to obtain a clear picture of the general trend. Unadjusted data are also available.

The figures presented in this publication are calculated using the X-13 ARIMA SEATS method of seasonal adjustment. The following is a link to an ONS Guide to seasonal adjustment with X-12 ARIMA (an updated guide for X-13 ARIMA SEATS is currently being finalised by ONS):

<http://www.ons.gov.uk/ons/guide-method/method-quality/general-methodology/time-series-analysis/guide-to-seasonal-adjustment.pdf>

Quality reporting

One indicator of the reliability of the figures in this bulletin can be obtained by monitoring the size of revisions. Previous revisions triangles are based on SIC03 data. With the move to SIC07, it is not possible to update the current revisions triangles with the data published on a SIC07 basis. Further information on the construction of SIC07 revisions triangles will be announced in due course.

Summary quality report

A summary quality report for this publication can be found on the IOS Quality and Revisions page of the website at <https://www.economy-ni.gov.uk/articles/quality-and-revisions>

Publication of results on a SIC07 basis

A Standard Industrial Classification (SIC) was first introduced into the UK in 1948 for use in classifying business establishments by the type of economic activity in which they are engaged. The UK is required by European legislation to revise the SIC in parallel with NACE (the statistical classification of economic activities in the European Communities) so that both systems are identical down to and including the four digit class level. More information on SIC07 can be found at the following links: <http://www.ons.gov.uk/ons/guide-method/classifications/current-standard-classifications/standard-industrial-classification/index.html>

<http://www.ons.gov.uk/ons/rel/naa2/second-estimate-of-gdp/q2-2011/art---bb11-improvements-to-gdp--ios--iop.html>

Status of figures in current bulletin

Figures in this publication of IOS reflect the move to using 2013 GVA which became available on 9th December 2015.

Results are published on a SIC07 basis and in line with ONS, the base year of the Northern Ireland Index of Services (IOS) is 2013=100.

All figures are published to one decimal place. Figures for annual averages and percentage changes over the previous quarter and year are based on unrounded figures and may not agree with the published constituent parts.

Results, particularly for the latest quarter, are provisional and are subject to revision as more up to date information becomes available.

Comparisons between the Index of Services and the Annual Business Inquiry (ABI) may not necessarily match because of definitional and coverage differences.

Planned future revisions

The IOS revisions policy can be found at

<https://www.economy-ni.gov.uk/publications/quality-and-revisions-documents-ios>

The SIC 47 code of retail is scheduled to be constructed as a separate series and it is planned to publish this series in the near future.

Publications policy

All Economic and Labour Market statistics publications are available to download free of charge from the website

<https://www.economy-ni.gov.uk/topics/deti-statistics-and-economic-research>

The IOS bulletin and tables from the current publication, which includes all the data from the start of the series in 2005, are available in Excel format to download free of charge from the IOS website at <https://www.economy-ni.gov.uk/topics/statistics-and-economic-research/index-services>

Future IOS publications are due to be published on the same day as the Index of Production and the Quarterly Employment Survey in March, June, September and December of each year.

The Economic and Labour Market statistics publication schedule is available at

<https://www.economy-ni.gov.uk/publications/elms-publication-schedule>

The list of people given pre-release access to this publication is available at

<https://www.economy-ni.gov.uk/publications/statistical-protocols-and-compliance-pre-release-information>

SIC 2007 definitions

Wholesale and retail trade; repair of motor vehicles and motorcycles; Accommodation and food service activities – SIC07 Sections G&I (Weight = 35.5%)

This sector includes the wholesale and retail sale and the supply of services incidental to the sale of merchandise as well as the repair of motor vehicles and motorcycles. This sector also includes the provision of short-stay accommodation for visitors and the provision of complete meals and drinks fit for immediate consumption.

Transport, storage, information & communication – SIC07 Sections H & J (Weight = 13%)

This sector includes the provision of passenger or freight transport and associated activities, postal and courier activities, the production and distribution of information and cultural products, as well as data or communications, information technology activities and the processing of data and other information service activities.

Business services and finance – SIC07 Sections K-N (Weight = 33.5%)

This sector includes financial service activities, real estate activities, specialised professional, scientific and technical activities and a variety of activities that support general business operations.

Other services – SIC07 Sections P-S (Weight = 18%)

This sector includes other activities not covered elsewhere - education, health & social work, arts, entertainment and recreation and other services. There are no comparable UK figures for other services.

Next publication

The next bulletin will be published on 14th December 2016.

For further information

Statistics contact:

Jennifer McLoughlin

Economic and Labour Market Statistics Branch, Room 120,
Netherleigh, Massey Avenue, Belfast BT4 2JP

Email: statistics@finance-ni.gov.uk

Tel: (028) 9052 9228

Textphone: (028) 9052 9304

Media contact:

Press Office, Netherleigh, Massey Avenue, Belfast BT4 2JP

Email: pressoffice@economy-ni.gov.uk

Tel: (028) 9052 9604

Textphone: (028) 9052 9304