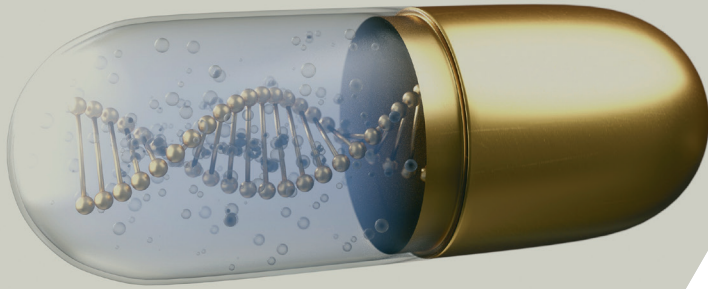


Precision Medicine



Northern
Ireland

Precision medicine is an area of substantial and rapidly growing focus in Northern Ireland, benefitting from the core strengths that underpin the region's R&D infrastructure. This R&D infrastructure provides researchers and investors with a skilled workforce and international access necessary to realise the full benefits precision medicine can deliver. Northern Ireland has a number of unique advantages for companies and organisations who wish to grow and accelerate precision medicine research and commercialisation...

A National Centre of Excellence for Precision Medicine in the UK

The UK aims to become a world centre for precision medicine, growing businesses in the sector and ensuring sustainable healthcare resources worldwide. Northern Ireland is home to a key centre of excellence to drive forward these ambitions with a focus on internationally accredited biomarker validation capability. The centre has a focused clinical implementation group with the aim of accelerating the adoption of validated biomarkers and diagnostic solutions within the Regional Health and Social Care (HSC) Trust.

An Integrated Health & Social Care System

For over 40 years, Northern Ireland has benefitted from an integrated health and social care system, the HSC, which facilitates person-centred, joined-up care and lends itself to the adoption and scaling up of new approaches and interventions.

Unique Electronic Patient Record System

The Northern Ireland Electronic Care Record (NIECR) brings together all key patient information from health and social care records throughout Northern Ireland into a single secure system. At any point in the healthcare system, medical staff caring for a patient will have full access to all existing health records including patient background, lab tests, x-rays and prescriptions.

Honest Broker Service

The Honest Broker Service (HBS) provides streamlined access to health data for high-quality, cutting-edge research using electronic health datasets. HBS enables non-identifiable health data to be safely shared to maximise the uses and health service benefits, including planning, commissioning of services and public health monitoring. This creates significant new potential for condition or population based research studies which would complement and measure the effectiveness of precision medicine developments.

Northern Ireland Biobank (NIB)

NIB collects, stores and distributes samples to support innovative R&D. NIB focuses on malignancies from the gastrointestinal tract, thoracic cavity, breast, lymphoreticular system, head and neck, genitourinary and gynaecological tracts. The collection includes tumour and non-tumour control tissues and patient-matched blood samples, with urine and saliva samples when appropriate.

NI Genomic Medicine Centre (NIGMC)

NIGMC is a partnership with NHS England, Genomics England Limited and the UK Medical Research Council. NIGMC brings together health, academia, industry and patients, placing Northern Ireland at the forefront of medical innovation by sequencing genomes on an unprecedented scale, bringing better treatments to patients with cancer and rare diseases.

Clinical Translational Research and Innovation Centre (C-TRIC)

C-TRIC is a unique facility promoting and facilitating translational and clinical research with the aim to reduce both the time to market and the costs associated with research and development of innovative health technologies, medical devices and therapeutics.

Strong Research Infrastructure

Northern Ireland has a successful history of close collaboration across industry, clinicians and academia.

Clinical	Industry	Academia
The Northern Ireland Clinical Research Network	Randox	Centre for Stratified Medicine
The Northern Ireland Cancer Trials Network	Almac	Biomedical Sciences Research Institute (BMSRI)
Northern Ireland Cancer Network	Philips Exploristics	Nanotechnology and Integrated Bioengineering Centre (NIBEC)
Northern Ireland Public Health Research Network	Analytic Engines Data Analytics	Centre for Cancer Research and Cell Biology (CCRCB) Northern Ireland – Molecular Pathology Laboratory Centre for Experimental Medicine Bio-Devices Lab

In addition to a depth of expertise in this area, Northern Ireland also offers:

- Competitive operating costs – between 20-30% lower than the rest of the UK and Europe.
- Access to a highly skilled workforce – 13,000 studying life and health sciences related subjects.
- A range of support – both practical and financial – to help with setting up in the region. Financial incentives can include grants for employment creation, training, property and R&D.

InvestNI.com
lifesciences@investni.com

