

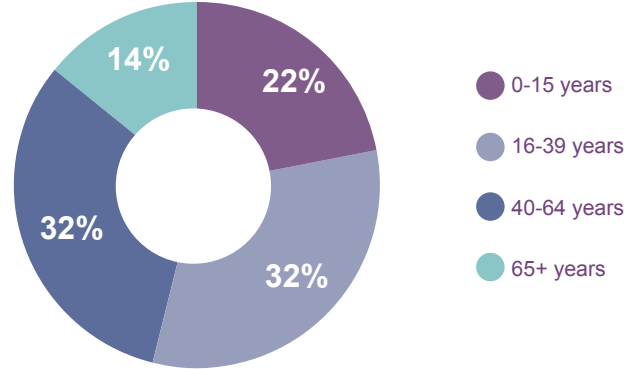
Population (2014)

Total
Population
149,198



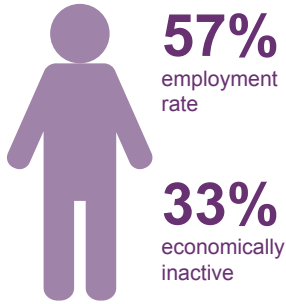
**8% of total
NI population**

Population by Age

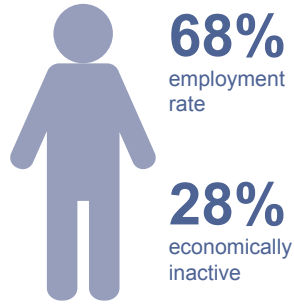


Labour Market (2014)

Derry & Strabane

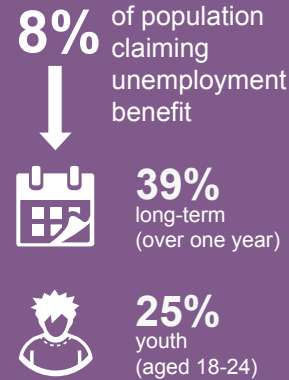


Northern Ireland

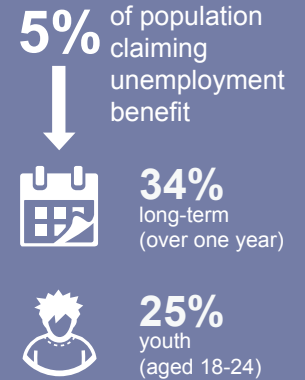


Labour market is composed of Economically Inactive and Economically Active (latter includes those in employment AND those seeking work)

Derry & Strabane

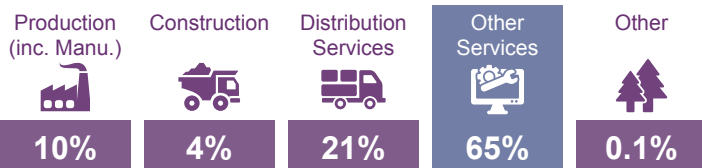


Northern Ireland



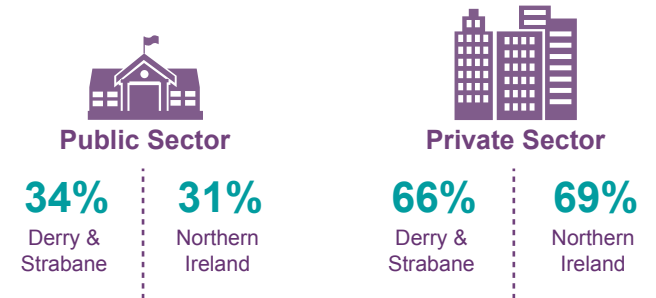
Jobs (2013)

50,253 employee jobs*



*These figures do not include the self-employed or agricultural labour

Public/Private Sector Employment



Earnings (2014)

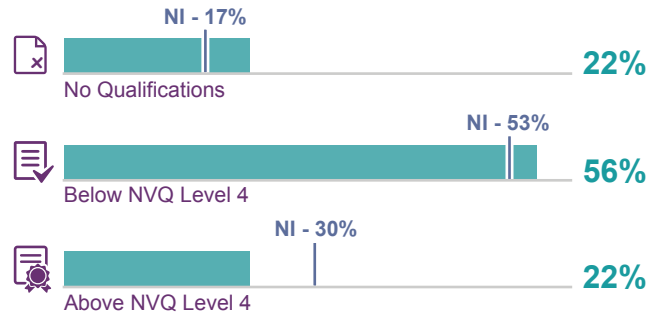


£18,112 Derry & Strabane

£21,345 Northern Ireland

Median gross annual earnings by place of work for full-time private sector employees

Qualifications (2014)



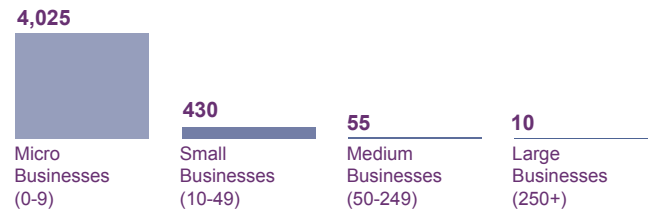
Business Base (2014)

Number of Registered Businesses



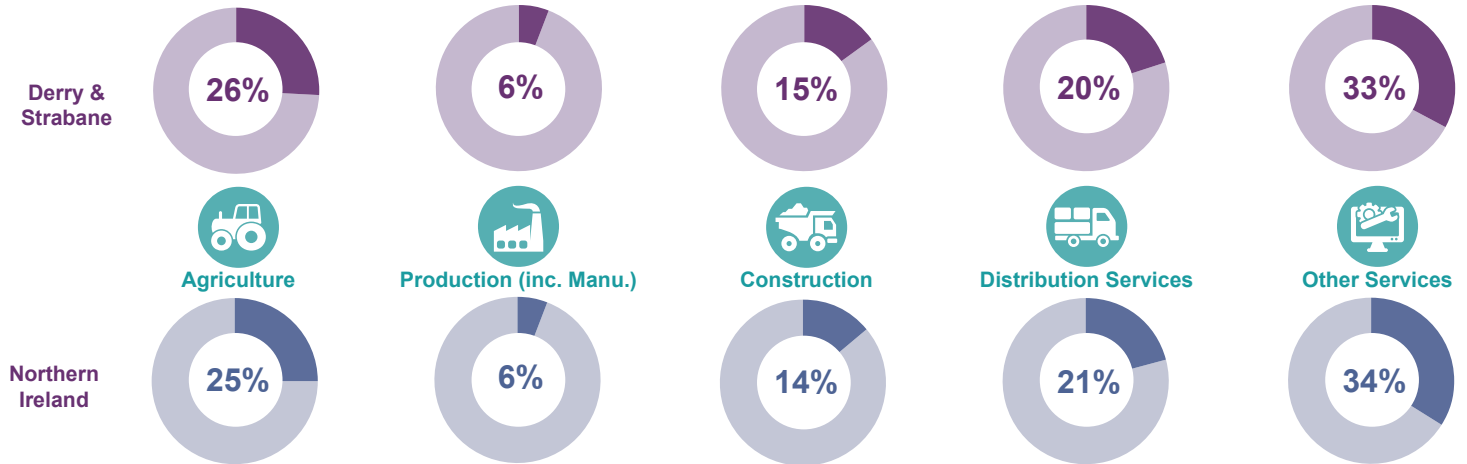
(This accounts for 7% of all the businesses in Northern Ireland)

Businesses by Size

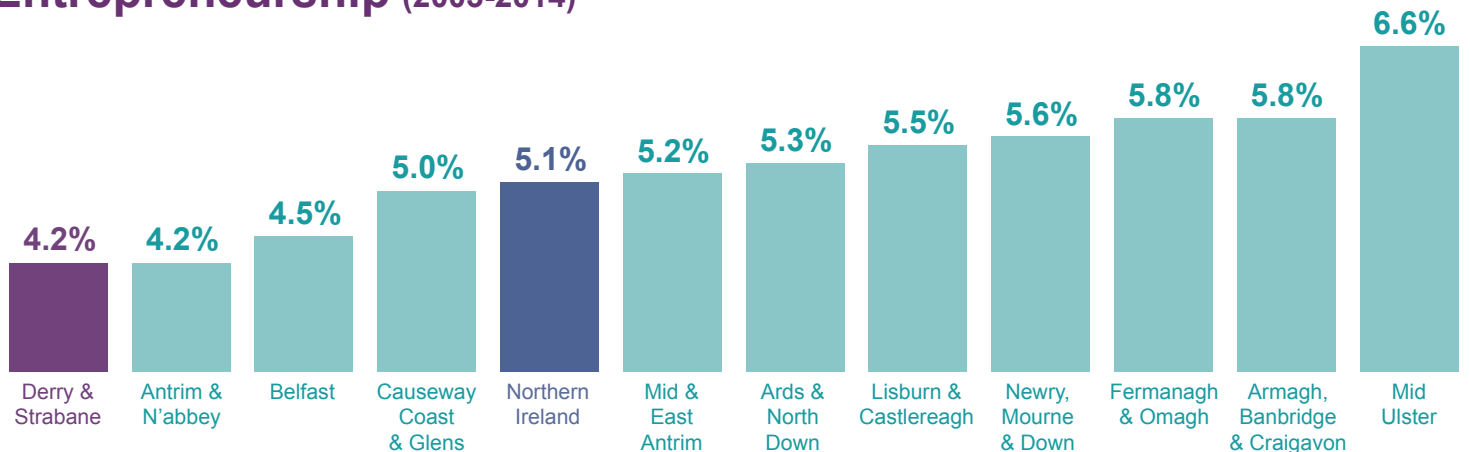


Sub-totals based on rounded data

Businesses by Sector



Entrepreneurship (2003-2014)



Based on the percentage of the population who have started or are in the process of starting a business

Invest NI Support (2010-11 to 2014-15)

Support Provided by Invest NI

Total support = £38m

Business Investment Secured

Total investment = £189m



- Externally Owned Businesses
- Locally Owned Businesses

Tourism

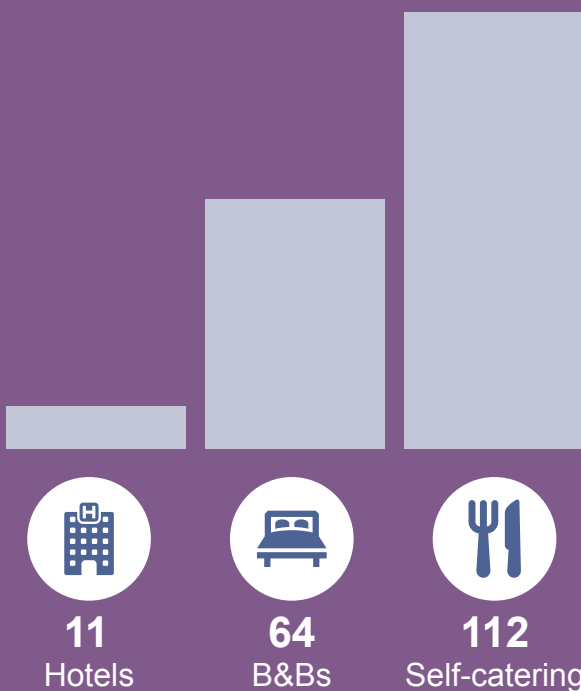
Tourism Jobs (2013)



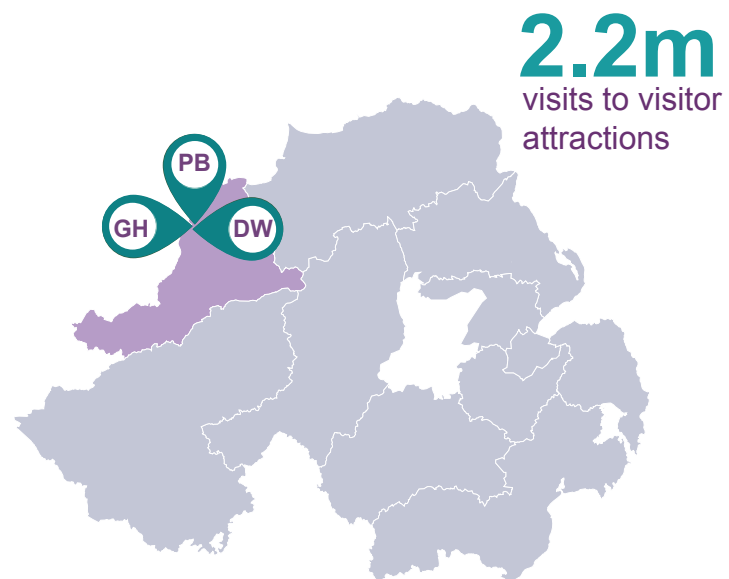
4,227 tourism jobs 

(8% of all jobs in Northern Ireland are within the tourist industry)

Accommodation (2014)



Visitor Attractions (2014)



The Peace Bridge, Derry's Walls and the Guildhall were the most popular visitor attractions in 2014

Find out more about Tourism NI