

Historic Environment Fund

FRAMEWORK OF SUPPORT

September 2016

HISTORIC ENVIRONMENT DIVISION



Department for
Communities

www.communities-ni.gov.uk

Historic Environment Fund

September 2016

DfC Framework for Historic Environment Fund

THE HISTORIC ENVIRONMENT FUND

INTRODUCTION	4
1 HISTORIC ENVIRONMENT FUND strategic areas for funding	7
2 Heritage RESEARCH	8
3 Heritage REGENERATION	10
4 Heritage REPAIR	14
5 Heritage REVIVAL	19
6 Supplementary matters	21



Ballydugan Mill and chimney

Introduction:

To support and sustain vibrant communities and a strong economy through realising the significant, ongoing value of our historic environment.

Cultural heritage is an expression of the ways of living, developed by a community and passed on from generation to generation, including customs, practices, places, objects, artistic expressions and values. Cultural Heritage is often expressed as either intangible or tangible cultural heritage [ICOMOS 2002]

The historic environment is a key component of our cultural heritage, contributing, through the archaeological heritage, architectural heritage, underwater heritage and historic landscapes to our sense of place and shared cultural identity. It enhances quality of life and adds local distinctiveness. It is an important economic and social asset. It is therefore vital that our historic environment is appreciated, protected and made accessible to present and future generations.

The historic environment can be used to the benefit of local communities with very significant economic, social and environmental benefits. The core of Historic Environment Division's work is to seek to realise this value and to encourage best practice. We do this by working in partnership with many organisations and individuals, seeking to encourage those that are doing things well, and to seek to enforce against those who cause damage to the historic environment.

The assessment of what we protect and how we fund our shared and important historic assets has been the subject of much recent debate. Research¹ has indicated that public funding often serves as a crucial enabler, or catalyst, to widen investment in the historic environment. It is often the mechanism for inducing private sector resources and further unlocking the scale of economic benefits embodied in built heritage assets.

Creating incentives for the repair, maintenance, use and reuse of the historic environment can help restore and conserve our region's heritage assets; help create employment; safeguard distinctiveness; retain a traditional skills base; and stimulate regeneration, thereby assisting to retain both tangible and intangible cultural heritage. The Historic Environment Fund will have a four year life span to align with the Executive's proposed budget period.

The Historic Environment Fund 2016-2020 will encompass four key strands: Heritage Research, Heritage Regeneration, Heritage Repair and Heritage Revival. The reasons we should provide this funding, and how we can promote capacity in each of the strands, are set out in this document.

The Fund's aims include:

Increasing understanding of our shared resource and facilitating excellence through **Heritage Research** schemes.

Strengthening and improving the physical environment and fostering the positive identity of places among local communities, supporting third sector capacity and regeneration initiatives through **Heritage Regeneration** schemes.

Encouraging sustainability and the preservation of the historic environment through helping to fund **Heritage Repairs**.

¹ A number of research documents have borne this out including *The Study on the Economic Value of Northern Ireland's Historic Environment* published by DOE in June 2012.

Promoting the social value of our historic environment and the innate contribution this can make to wellbeing **and sustainable employment** through our **Heritage Revival** initiatives.

Proposals across all streams of the HEF are marked against standard criteria. The weighting given to each varies between funding routes. Applicants should seek to address their scheme's contribution to:

- Conservation and enhancement of the historic environment
- Economic impact - contribution to tourism and to supporting communities
- Economic impact - supporting the construction and associated industries
- Social benefits – creating broader and deeper understanding of our heritage
- Social benefits – enhancing public engagement with the historic environment

In line with the principles of principles of sustainable management of our historic environment [see below]. These will be among the key measures against which the priorities and outcomes will be assessed to have been achieved, progressed and reported.

The streams identified are deliberately designed to seek to capture the full range of potential support. Not all will necessarily be available in all years. Some smaller grants may also be best delivered through streamlined processes and/or intermediaries. We will not be able to always offer funding to every eligible project in need of financial assistance. We will review these priorities periodically to make sure that we are responding to the changing needs of the historic environment.

Sustainable Management of the Historic Environment

In parallel with the development of these funding proposals, HED is developing a framework for the sustainable management of our historic environment. We have identified six principles:

- The historic environment is a shared resource **and we have a shared responsibility to pass it on to the next generation in good condition.**
- Everyone will be able to participate in sustaining the historic environment.
- Understanding the significance of historic assets is vital.
- Historic assets will be managed to sustain their values*.
- Decisions about change must be reasonable, transparent and consistent.
- Documenting and learning from decisions is essential.

These six principles are in line with best practice in conservation management. The extent to which proposals adhere to the universal conservation principles of minimum intervention, maximum retention of historic fabric, clarity, reversibility and sustainability will also be a determining weight in decisions on funding of conservation works at heritage assets.

*values will include evidential value; historical value; aesthetic value and communal value.



326 Seacoast Road Magilligan [before]



326 Seacoast Road Magilligan [after]

1 STRATEGIC AREAS for FUNDING

HISTORIC ENVIRONMENT FUND 2016-2020	
<p>HERITAGE RESEARCH UNDERSTANDING AND FACILITATING EXCELLENCE The following will not open in 2016-17:</p> <p>Historic Environment Research Support</p> <p>Publications Support</p> <p>University Support</p> <p>Post- Excavation Support</p> <p>Incubation-Innovation Support</p> <p>Archaeological Investigation Support</p> <p>Conservation Plan seed Funding Support</p> <p>Research and Capacity building Support</p> <p>Training and Capacity building for Councils</p> <p>Increasing understanding of our shared resource and facilitating excellence through Heritage Research schemes.</p> <p>10-20% of fund</p>	<p>HERITAGE REGENERATION FACILITATING HERITAGE –LED REGENERATION</p> <p>Historic Monument Regeneration</p> <p>Preservation of Heritage At Risk</p> <p>Community Enterprise Catalyst</p> <p>District Council Pilot Project</p> <p>Heritage At Risk [HAR] Recording project</p> <p>The following will not open in 2016-17:</p> <p style="padding-left: 40px;">HAR Acquisition Fund HAR No economic value Fund HAR Council owned structures Fund HAR Exceptional Circumstances Fund</p> <p>Strengthening and improving the physical environment and fostering the positive identity of places among local communities by supporting third sector capacity and regeneration initiatives through Heritage Regeneration schemes.</p> <p>10-30% of fund</p>
<p>HERITAGE REPAIR REWARDING AND ENCOURAGING BEST PRACTICE IN CONSERVATION</p> <p>Historic Monuments Repair</p> <p>Listed Buildings Repair [including] Historic Window Repairs and Thatched Building repairs</p> <p>The following will not open in 2016-17:</p> <p>Small works Listed Places Of Worship Funding Stream</p> <p>Encouraging sustainability and best practice in conservation in the preservation of the historic environment through Heritage Repairs funding.</p> <p>40-60% of fund</p>	<p>HERITAGE REVIVAL PROMOTING SOCIAL VALUE OF HERITAGE</p> <p>Historic Environment Community Archaeology Support</p> <p>District Council Maintenance week catalyst</p> <p>Historic Environment Schools Transport</p> <p>Historic Environment Awards</p> <p>The following will not open in 2016-17:</p> <p>Skills development with training and education activities Historic Environment Support Fund</p> <p>Promoting the social value of our historic environment and the innate contribution this can make to wellbeing and sustainable employment through Heritage Revival initiatives.</p> <p>10-20% of fund</p>

2 HERITAGE RESEARCH

ACHIEVING EXCELLENCE

WHAT do we fund?

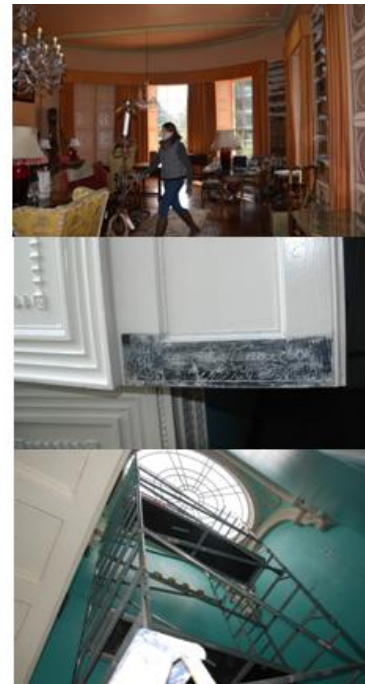
Pending development of a strategic research framework, this stream will not open in 2016-17.

WHY do we fund it?

We will work with others to develop an increased understanding of our shared historic environment, to develop innovative ways to protect it from harm and to enrich skills and expertise to help care for it.

HOW will we distribute this fund?

HISTORIC ENVIRONMENT RESEARCH SUPPORT
PUBLICATIONS SUPPORT
UNIVERSITY SUPPORT
POST EXCAVATION SUPPORT
INCUBATION-INNOVATION SUPPORT
ARCHAEOLOGICAL INVESTIGATION SUPPORT
CONSERVATION PLAN SEED SUPPORT
RESEARCH AND CAPACITY BUILDING SUPPORT
TRAINING AND CAPACITY BUILDING FOR COUNCILS



Conservation works at Mount Stewart

HISTORIC ENVIRONMENT RESEARCH SUPPORT

A funding programme for research proposals. Working with our partners in District Councils, industry and the construction sector we will develop a framework for research and

development funding in 2016, to allow for proposals under this heading in the remaining years of the Fund.

PUBLICATIONS FUND

A small funding programme to support publications on the historic environment which help to support the Historic Environment Division's aims.

UNIVERSITY FUND

An occasional scholarship programme to assist with research in the historic environment.

POST-EXCAVATION FUND

A funding programme to enable the creation of completed archaeological archives.



Ballycopeland Windmill

INCUBATION-INNOVATION FUND

A funding programme for innovative and creative approaches to unlocking and realising the significant ongoing value of our historic environment.

ARCHAEOLOGICAL INVESTIGATION FUNDING

A funding programme for archaeological investigations. This stream will consider a range of proposals for investigation ranging from survey to excavation. Research-based proposals are welcome; so too are applications from non-profit making bodies and individuals who find themselves having to fund archaeological investigations in order to comply with conditions or other requirements within the development planning process.

CONSERVATION PLAN SEED FUNDING

In recognition of the importance of conservation planning as key to ensuring long term benefits for public investment, HED will introduce a small funding scheme to assist with the preparation of conservation plans. Any award will be commensurate with the complexity of the heritage asset.

RESEARCH AND CAPACITY BUILDING/ TRAINING AND CAPACITY BUILDING

Potential for transfer of specialist knowledge and procedures in planning matters and partnering communities with third level archaeology and architecture departments and between HED, partner organisations and councils.



3. HERITAGE REGENERATION

PROMOTING REUSE - BENEFITING THE COMMUNITY

WHAT do we fund?

HED will offer funding to help deliver tangible benefits to local communities and local economies.

WHY do we fund it?

Heritage can play a key role in regeneration, reinforcing a sense of community, making an important contribution to the local economy and acting as a catalyst for improvements to the wider area. Encouraging participation in and inviting engagement with grassroots [community], local authority and regional levels will help to broaden the awareness of economic, social and environmental impacts of best practice.

HOW can we distribute this fund?

**HISTORIC MONUMENT REGENERATION
PRESERVATION OF HERITAGE AT RISK**

**COMMUNITY ENTERPRISE CATALYST
DISTRICT COUNCIL PILOT PROJECT
HERITAGE AT RISK [HAR] RECORDING PROJECT**

The following will not open in 2016-17:

**HAR ACQUISITION FUND
HAR OF NO ECONOMIC VALUE FUND**

**HAR COUNCIL OWNED STRUCTURES FUND
HAR EXCEPTIONAL CIRCUMSTANCES FUND**



Montalto stableyard



General Cole & Town Hall Enniskillen



Carricklee stableyard



Ballytrustan Graveyard

HISTORIC MONUMENT REGENERATION

Funding for projects which are aimed at encouraging public access and engagement at historic monuments in Northern Ireland. Applications with demonstrable community and tourism benefits such as improved access signage and presentation schemes are encouraged.

PRESERVATION OF HERITAGE AT RISK

A funding programme - targeted at heritage at risk [HAR] - for Building Preservation Trusts and other similar charitable bodies to make structures 'weather tight'. BPTs will be able to apply for a maximum 50% of eligible costs - to make the structure weathertight.

COMMUNITY ENTERPRISE CATALYST

Funding for strategic projects to assist with capacity building for community-led proposals [including Trusts] which seek to support and encourage the development of community enterprise through heritage in Northern Ireland.

DISTRICT COUNCIL PILOT PROJECT

Part funding of a pilot project with Derry City and Strabane District Council, whose Chief Executive has taken on heritage as a specialist area, in agreement with the Chief Executives of the other district councils.

HERITAGE AT RISK [HAR] RECORDING

Extension of current arrangements [until March 2017] with the Ulster Architectural Heritage Society to record Heritage at Risk, pending the development of a clear strategy in this area.

The following will not open in 2016-17:

HAR ACQUISITION FUND

Funds to support the acquisition of heritage at risk by BPTs/similar charitable bodies. In addition to 'stand alone' BPTs, BPTs which are developed by District Councils will be allowed to apply for acquisition funding for listed buildings at risk. The funding will include any expert advice needed by the Department to access proposals.



Carlisle Memorial- before emergency works

HAR OF NO ECONOMIC VALUE FUND

Funding stream for those buildings/ structures on the HAR register with no economic use – e.g.-follies, estate structures with no potential for habitation, bridges, mortuary chapels, etc.



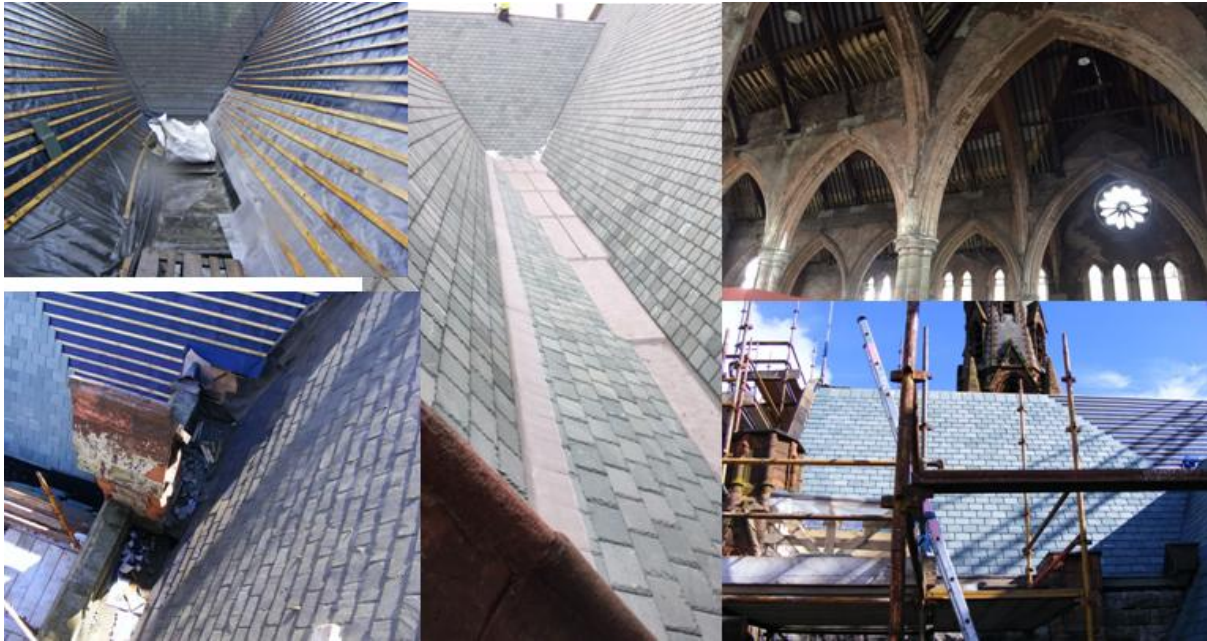
Cenotaph, Ballyquin Road, Limavady

HAR COUNCIL OWNED STRUCTURES FUND

Funding stream for repair projects for listed buildings on the HAR register which are in District Council ownership. Listed buildings which are not at risk in District Council ownership will no longer be eligible for grant aid for repairs.

HAR EXCEPTIONAL CIRCUMSTANCES FUND

In exceptional circumstances, funding may be made available to support charities which it appears to the Department have among their principal objectives furthering the preservation, conservation and regeneration of historic buildings (Section 225 (2) of the Planning Act (NI) 2011), where a full business case demonstrates the need for additional public subsidy to allow a conservation project to progress. The building(s) must be listed, on the HAR register and assessed by HED as being in priority category 'A' or 'B' that is 'at immediate risk of further rapid deterioration or loss of fabric'.



Carlisle Memorial after conservation works

4. HERITAGE REPAIR

REWARDING AND ENCOURAGING BEST PRACTICE IN CONSERVATION

WHAT do we fund?

Proposals for assisting owners and custodians to repair and maintain their heritage assets, in turn helping to develop and sustain heritage skills and providing for greater public understanding of the historic environment.

WHY do we fund it?

HED recognises that extra costs apply to conservation works at heritage structures. Public funding often serves as a catalyst to widen investment in the historic environment and as a mechanism for unlocking the scale of economic benefits embodied in heritage assets. Traditional craft skills are an important part of our shared and vulnerable heritage and it is right that we should look to maintain them.

HOW can we distribute this fund?

HISTORIC MONUMENTS REPAIR

LISTED BUILDINGS REPAIR Including **HISTORIC WINDOW REPAIRS AND THATCHED BUILDING REPAIRS.**

The following will not open in 2016-17:

SMALL WORKS LISTED PLACES OF WORSHIP FUNDING STREAM

HISTORIC MONUMENT REPAIRS

Funding stream aimed at providing assistance to the owners of scheduled historic monuments to carry out repairs. 80% of eligible costs up to a cap of 50K is available.



Ardkeen from the air



Kilbroney Old Church

LISTED BUILDING REPAIRS

Recognising the need for essential repairs at listed buildings, a funding stream for all grades of secular buildings and the higher grades of churches at A and B+ grade. Funding will be awarded at 20% for all eligible items for works which are deemed to be urgently necessary, with the exception of urgent repairs to historic windows which will be provided at an enhanced rate of 35%.



The Manse at Great James Street Derry



Repairs to window and linings Mount Stewart

Recognising the distinctiveness, fragility and rarity of thatch in an era of increased levels of rainfall and climate change, it is proposed that the rate of grant-aid for thatch and repairs to roof structures of thatched buildings will be increased to 80%, with the focus on the use of locally grown and indigenous thatch materials and methods, to seek to encourage the retention of thatching as a heritage skill, at risk of becoming obsolete.

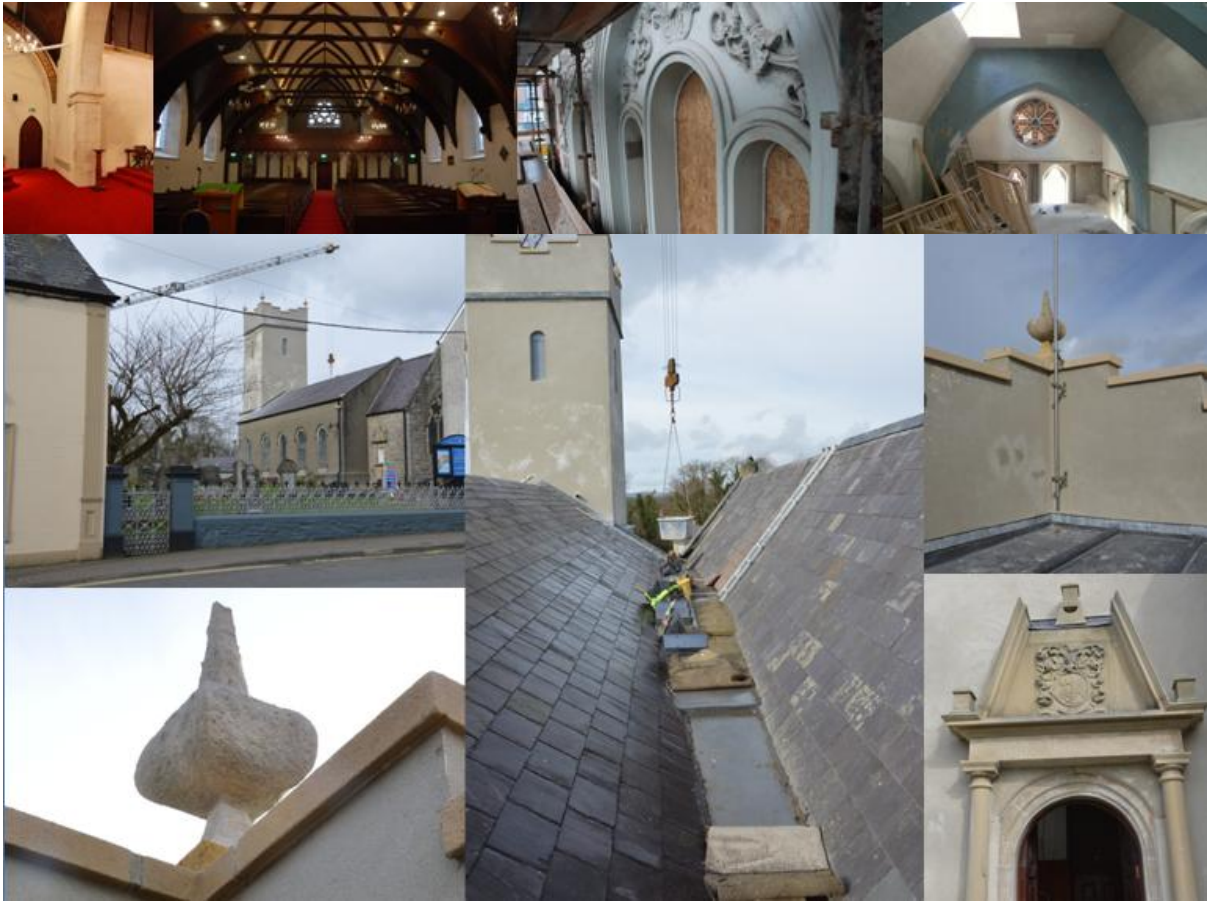


Thatching at Dan Winter's cottage

The following will not open in 2016-17:

SMALL WORKS LISTED PLACES OF WORSHIP FUND

Recognising that grant-aid for the lower grades of listed places of worship [LPOWs] at grades B, B1 and B2 has never before been made available, HED will address the issue of climate change and maintenance by introducing a Small Works Programme for LPOWs currently excluded. It is proposed as a first step to working proactively with the custodians of these key listed buildings which make such a valuable contribution to the community.



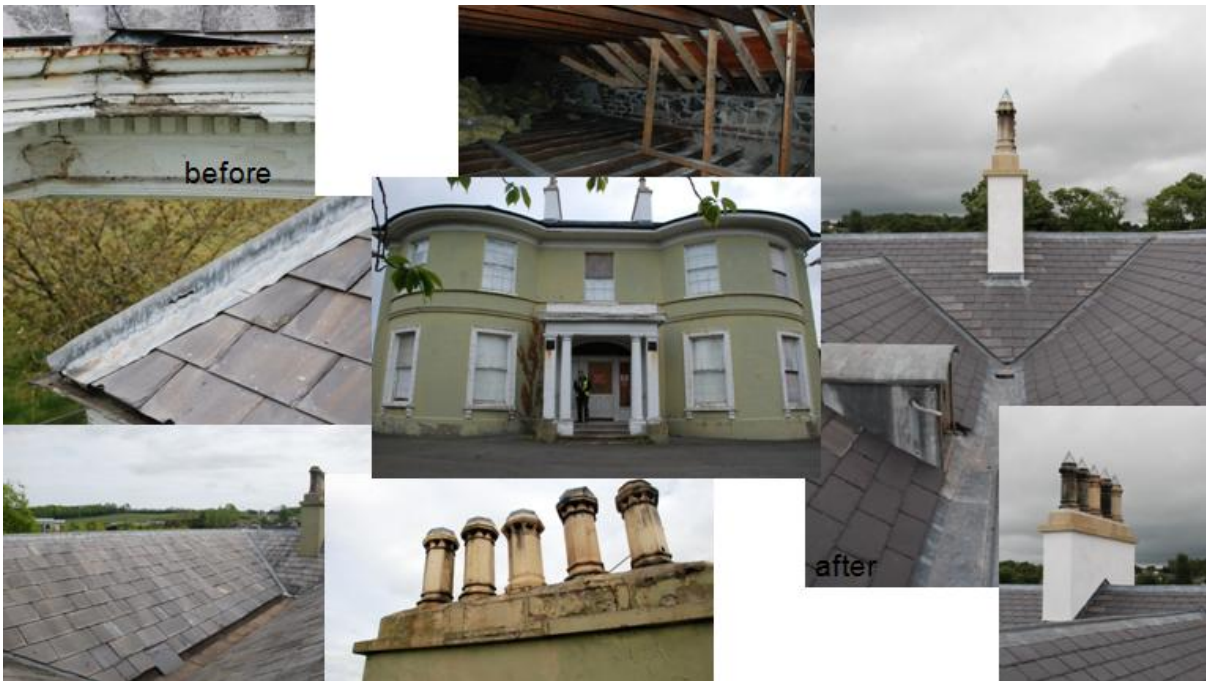
Derg Parish Church Castledearg – roof repairs



1st Presbyterian Church Bangor – stone repairs



Bishop's Palace Armagh – repairs to interior plasterwork



The Steeple Antrim – repairs to roof and chimneys

5 HERITAGE REVIVAL

PROMOTING SOCIAL VALUE OF HERITAGE

WHAT do we fund?

Incentives and rewards for owners, custodians and guardians that demonstrate commitment to the Divisional Aim 'To support and sustain vibrant communities and a strong economy through realising the significant, ongoing value of our historic environment'.

WHY do we fund it?

The historic environment is a shared resource. We work with others to help promote our shared historic environment.

HOW can we distribute this fund?

HISTORIC ENVIRONMENT COMMUNITY ARCHAEOLOGY SUPPORT

DISTRICT COUNCIL MAINTENANCE WEEK CATALYST

HISTORIC ENVIRONMENT SCHOOLS TRANSPORT

HISTORIC ENVIRONMENT AWARDS

The following will not open in 2016-17:

SKILLS DEVELOPMENT WITH TRAINING AND EDUCATION ACTIVITIES

HISTORIC ENVIRONMENT SUPPORT FUND



HISTORIC ENVIRONMENT COMMUNITY ARCHAEOLOGY SUPPORT

A fund aimed at encouraging communities to explore their history through archaeological projects

DISTRICT COUNCILS MAINTENANCE WEEK CATALYST

A fund to support councils to encourage owners to take action to maintain their historic buildings

HISTORIC ENVIRONMENT SCHOOLS TRANSPORT FUND

HED will provide a fund to support travel costs associated with the Heritage Schools initiative to fund coach trips to HED BPT and NT sites for school children.

HISTORIC ENVIRONMENT AWARDS

HED Awards aimed at increasing public awareness and encouraging those who work to realise the potential of the historic environment.



The following will not open in 2016-17:

HISTORIC ENVIRONMENT SUPPORT FUND

A fund to support diverse projects such as providing grants to events, training, and travel and study costs associated with supporting community outreach. The benefits of the project should align with HED's aim to support and sustain vibrant communities and a strong economy through realising the significant, ongoing value of our historic environment.

SKILLS DEVELOPMENT WITH TRAINING AND EDUCATION ACTIVITIES

A fund to support diverse projects such as providing support for training, travel and study costs associated with the use of traditional materials and skills. The benefits of the project should align with HED's aim to support and sustain vibrant communities and a strong economy through realising the significant, ongoing value of our historic environment.

6 SUPPLEMENTARY MATTERS

ADDITIONAL GENERAL INFORMATION FOR THE PROCESSING AND ADMINISTRATION OF HISTORIC ENVIRONMENT DIVISION [HED] ASSISTANCE



Killymoon Castle- roof repair works

Restrictions to Fund - capping, processing and batching

As an effective financial management system, a two-stage system will be introduced to determine eligibility and demand. Capping will be set at £50K. This will be subject to periodic review. Batching of applications will be considered three times a year to assist to profile uptake and possible outturn to help financial forecasting and avoid over commitment. Proposals will be competitively scored and weighted against agreed criteria and priorities. The benefits of the project[s] should align with HED's aim **to support and sustain vibrant communities and a strong economy through realising the significant, ongoing value of our historic environment.**

Dispersal of Fund

In order to build capacity across the region, applicants will be asked for details of all other Government and HLF funding received in the previous three years [including Challenge Funding], in order to ensure the maximum dispersal of funding and avoid cold spots of funding.

Priorities in the event of restricted funding

In the event of a restricted funding situation for listed building repairs, HED will give priority to:

- structures on the HAR register*;
- thatched buildings;
- those applicants qualifying for enhanced rate of grant;

*The owners of buildings on the HAR register, as part of their application, will have to demonstrate that measures to address water damage by, for example, preventing water ingress and /or securing wall heads etc through temporary means, have been undertaken in order to safeguard scarce public funding.



Conservation works at Charles Sheil's Housing, Killough

Funding Maintenance plans

In recognition of the importance of maintenance as key to ensuring long term benefits for public investment, Historic Environment Division [HED] will introduce as a condition on all offers for listed buildings over £20,000, the submission of an appropriate maintenance plan. The preparation of these plans may be an eligible cost, and will be limited to 75% of the costs, up to a maximum of £200.

A condition of any future offer will be that the maintenance detailed in the plan has been carried out.

Enhanced levels of grant aid to owners in receipt of qualifying benefit

The enhanced rate of grant for eligible applicants for listed building support will be maintained at 90% of eligible costs and capped at £50K. Current exclusions for listed building support will remain. Government and public bodies, Housing Associations funded by public monies, large commercial organisations, including but not exclusively limited to, financial institutions, and multi-national companies, are excluded from the scheme.

Funding Condition Reports and Forward Plans

Where there is a history of applications for one heritage asset or for assets in common ownership, or where phasing is proposed, applications must be based on a full condition report and forward plan outlining the future development of the property or properties over

the next 5 years. The report, prepared by an accredited conservation professional, should identify those works that are urgent, and those likely to be required in the medium and long-term.

The preparation of these documents will be an eligible cost. Funding will be available for up to 75% of the total cost, and will be capped at £1K. This will be paid on commencement of the first work phase.

Requirement to appoint accredited conservation professionals on listed building schemes over value of £10K

As a condition of support, where the total cost of eligible work is estimated at £10,000 or more (including fees and VAT), applicants will be required to appoint an accredited conservation professional to specify and oversee the works. This will be introduced in 2017, to facilitate applications for accreditation to be achieved by the relevant professions.

Publicity and outreach of schemes

As a condition of support, all recipients of suitable offers will be required to agree to an appropriate level of public access for 5 years from the date of the final payment being made by Historic Environment Division [HED], such as European Heritage Open Days.

Additional publicity including description of proposals, photographs and information including financial award[s] will be available for web dissemination and /or printed promotional literature.





September 2016

[This page is intentionally left blank]

Supporting and sustaining vibrant communities and a strong economy through realising the significant, ongoing value of our historic environment.

Historic Environment Division

Causeway Exchange

1-7 Bedford Street

Belfast

BT2 7EG

Tel: 028 9082 3177 / 028 9082 3126

Email: Historicenvironmentenquiries@communities-ni.gov.uk

Web: www.communities-ni.gov.uk/topics/historic-environment

