

Understanding a Pesticide Product Label

Karen Hughes, Environmental Farming Branch

The law requires that only authorised plant protection products shall be sold, supplied, used, stored or advertised. It is the responsibility of all farmers and contractors to understand pesticide product labels and ensure that they only use pesticides that are approved for the UK and at the correct rate and method.

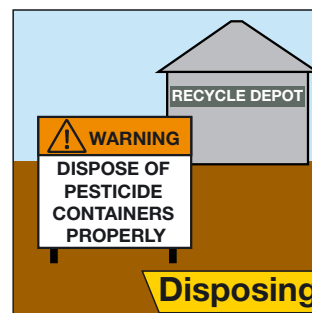
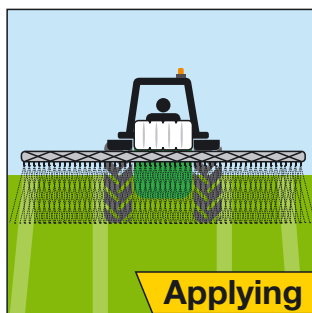
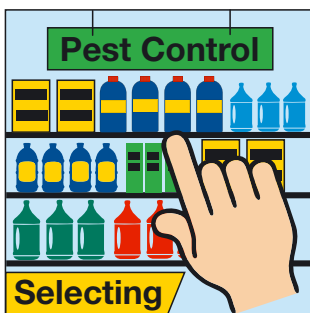
MAPP – Ministry Approved Pesticide Product

Only pesticides that have a MAPP approval number on the label can be used. This identifies that the product has been tested and is safe to use for the purposes stated. You are committing an offence if you store and use a foreign product which does not have a MAPP approved number, even if the label supplied with it is in English.

Products sold in the South may have an identical label as those sold in the North of Ireland but they can only be used in the North if they have a MAPP number, or if the product has been given a parallel import license approval. You can check whether a particular pesticide has a parallel import license by searching for the product on the Pesticide register of approved products at <https://secure.pesticides.gov.uk/pestreg/>

You must:

- Only use approved pesticides.
- Use pesticides in accordance with the conditions attached to the approval and the information specified on the product label.
- Read and understand all the information contained in the label. Labels are legal documents providing direction on how to mix, apply, store, and dispose of a pesticide product.
- Monitor stocks to ensure that MAPP numbers are still current and approved uses have not changed. If unsure consult a BASIS approved agronomist or check the CRD website at <https://secure.pesticides.gov.uk/pestreg/>



Label Information

The label provides important information about the use of the pesticide. Be sure to read the entire label before each use of the pesticide. The label information should include:

Instructions for use

These usually provide information on:

- When to use, e.g. at what stage of development, frequency of use;
- Where to use, e.g. in which situations, on what crops; for example products labelled for use only on potatoes cannot be used on any other crop;
- How to use, e.g. shake well before use.

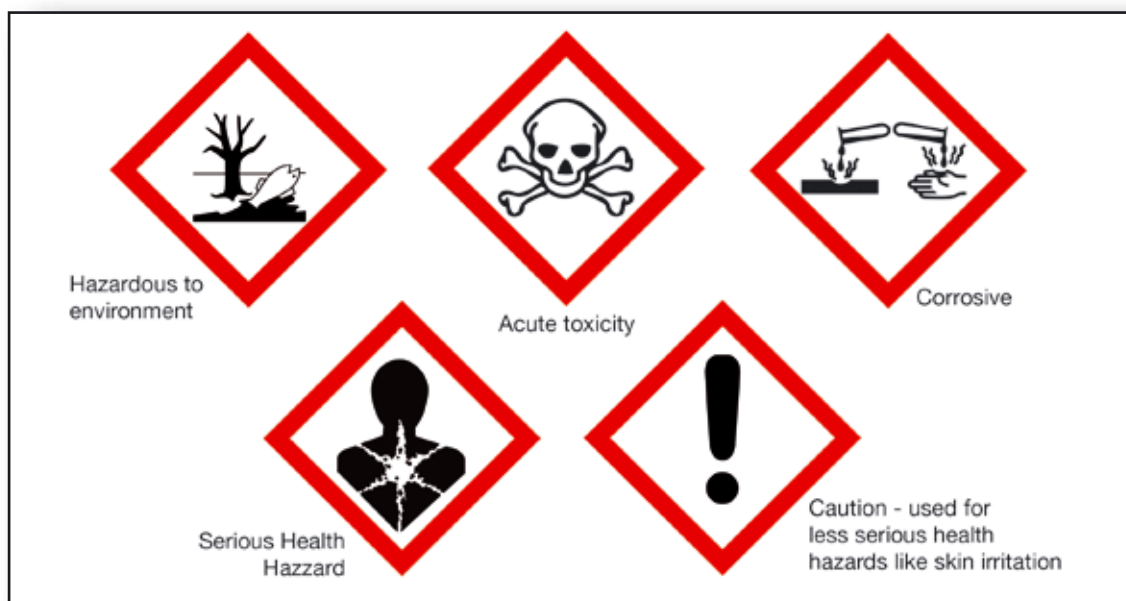
Safety Instructions

This section of the label normally includes:

- Protection during use, e.g. Wash hands and exposed skin after use or wear suitable protective gloves;
- Storage and disposal, e.g. Store in original container.

Symbols to look out for

You will have to carry out a COSHH assessment if the label has any hazard symbol. The most common hazard symbols are shown below:



Field of Use Restrictions

For example, *for use only as an Agricultural or Horticultural herbicide.*

Environmental Protection

This section indicates if the product can cause environmental damage – if it is harmful to wildlife, fish, pollinators or water bodies such as ponds, lakes, rivers, streams and springs. Any buffer zones stated must be abided by.

Maximum Dose Rate/Application Rate

The maximum dose rate is the rate of the pesticide allowed as a single application. This may be given as a rate of product per hectare or as a ratio of product to carrier, usually water. The label may recommend lower dose rates for specific uses – if unsure consult a BASIS approved agronomist.

Maximum Number of Treatments or Maximum Total Dose

This is normally stated as a condition per crop or per season and refers to the number of times you can treat the crop or the total amount of pesticide you can apply per hectare.

Latest time of application before harvest, replanting or re-entry interval

For example, at transplanting or the minimum interval between applications to the following crops must be observed. Apple, Pears: 14 days or a period of 14 days must be allowed between application of the product and the harvest of the crop.

Crop Specific Recommendations

A Crop Specific Recommendation will apply to a given crop or situation and will always be lower than the Maximum Dose Rate.

Application Rate or Volume Rate

This is the total amount of liquid (pesticide + water) to be applied to a given area, usually one hectare. Minimum and/or maximum rates may be given.

Example of an Application Rates table shown on a label

Target Weeds	Hydraulic Sprayers	Amount of Product	Treated Area	Water Volume
Emergent weeds e.g. Reed, Grasses, Water Cress	Boom Sprayer	5.0 litres	1 ha	200-400 litres Optimum 250 litres
	Knapsack Sprayer	50 ml	100 m ²	2.0 to 4.0 litres
Floating Weeds e.g. Water-lilies	Boom Sprayer	6.0 litres	1 ha	100-200 litres
	Knapsack Sprayer	60 ml	100 m ²	4.0 litres

Additional information and pesticides application training courses

CAFRE provides training on the safe use of pesticides and the PA1 course includes training on the use of labels. Training can be arranged by:

1. Enrolling online at: os.cafre.ac.uk/website/onlineservices/courses.aspx
(select Industry Training - Agriculture) or by
2. Contacting the Industry Training Administration Team directly:
 - Email: industry.trainingadmin@dardni.gov.uk
 - Telephone: 028 9442 6880