

# Enrolments at UK Higher Education Institutions:

## Northern Ireland analysis 2014/15

**Date of Publication:**  
18 February 2016

**Frequency of Publication:**  
Annual

**Issued by:**  
Statistics and Research Branch  
(Tertiary Education)  
Department for Employment  
and Learning  
Adelaide House  
39-49 Adelaide Street  
Belfast  
BT2 8FD

**Public Enquiries:**  
Statistics and Research Branch  
(Tertiary Education)  
(028) 9025 7895

**Statistician:**  
Andy Bannon

**Email:**  
[analyticalservices@delni.gov.uk](mailto:analyticalservices@delni.gov.uk)

**Internet:**  
<https://www.delni.gov.uk/topics/del-statistics-and-research>

This statistical bulletin has been produced by the Department for Employment and Learning (DEL), Northern Ireland (NI) and provides information on the number of NI students enrolled at UK Higher Education Institutions (HEIs) and the number of students enrolled at NI HEIs.

- Over the last ten years the number of NI students enrolled at UK HEIs decreased by 2.7%, to 63,965 in 2014/15; however this decrease has not been constant over the period (Tables 1a and 1b).
- The number of NI students enrolled on full-time first year undergraduate courses at UK HEIs decreased by 1.4%, from 13,930 in 2013/14 to 13,735 in 2014/15 (Tables 2a and 2c).
- Of the 63,965 NI students enrolled at UK HEIs in 2014/15, 69.2% were enrolled at an HEI in NI, 24.8% at an HEI in GB and 5.9% were studying through the Open University (Table 1a).
- In 2014/15, 47.1% of NI domiciled students at UK HEIs were studying a Science, Technology, Engineering or Maths (Broad STEM) related subject and 25.5% a Narrow STEM related subject (Table 7a).
- Over the last ten academic years the total number of students enrolled at NI HEIs decreased by 0.1%, to 56,445 in 2014/15. Between 2013/14 and 2014/15 enrolments at NI HEIs have increased by 0.1% (Tables 8e and 8f).
- Of the 56,445 students enrolled at NI HEIs in 2014/15, 85.2% were from NI, 4.2% from the Republic of Ireland (RoI), 5.0% from Great Britain (GB), 0.7% from other EU countries and 5.0% from non EU countries (Table 8a).

## READER INFORMATION

Purpose	Monitor and report on 1) NI domiciled Enrolments in Higher Education Institutions in the United Kingdom, and 2) All Enrolments at NI Higher Education Institutions.
Authors	Andy Bannon, Kerry McColgan, Michael MacNeill, Laura Smyth.
Publication Date	Thursday 18th February 2016
Reporting Period	Academic Years 2005/06 to 2014/15
Publication Issue	19
Statistical Quality	Information detailed in this release has been quality assured by the Higher Education Statistics Authority (HESA) prior to release.
Target audience	Department for Employment and Learning (DEL), Directors of HE Institutions in Northern Ireland, Board members of HE Institutions, educational professionals, academics, media and members of the public interested in the HE sector.
Further copies from	<a href="mailto:analyticalservices@delni.gov.uk">analyticalservices@delni.gov.uk</a>
Internet address	<a href="http://www.delni.gov.uk/statistics">http://www.delni.gov.uk/statistics</a>
Price	Free
Copyright	This publication is Crown copyright and may be reproduced free of charge in any format or medium. Any material used must be acknowledged, and the title of the publication specified.
Feedback	As we want to engage with users of our statistics, we invite you to feedback your comments on this publication to:  Andy Bannon or Kerry McColgan Email: <a href="mailto:Andrew.Bannon@delni.gov.uk">Andrew.Bannon@delni.gov.uk</a> or <a href="mailto:Kerry.McColgan@delni.gov.uk">Kerry.McColgan@delni.gov.uk</a> Tel: (028) 90 257895 or (028) 90 257753

## TABLE OF CONTENTS

<a href="#">Reader Information</a> .....	Page 2
<a href="#">Table of Contents</a> .....	Page 3
<a href="#">List of Figures</a> .....	Page 4
<a href="#">Statistics and Research Branch</a> .....	Page 5
<a href="#">Key Statistics</a> .....	Page 6
<a href="#">Introduction</a> .....	Page 8
<a href="#">Structure of Report</a> .....	Page 11
<b>Section 1: Northern Ireland domiciled students enrolled at UK Higher Education Institutions</b> .....	Page 12
<a href="#">Change over the last 10 years</a> .....	Page 12
<a href="#">Breakdown of enrolments</a> .....	Page 13
<a href="#">Location of study</a> .....	Page 14
<a href="#">Multiple Deprivation Measure quintiles</a> .....	Page 16
<a href="#">Subject of study</a> .....	Page 16
<b>Section 2: Enrolments at Northern Ireland Higher Education Institutions</b> .....	Page 18
<a href="#">Change over the last 10 years</a> .....	Page 18
<a href="#">Breakdown of enrolments</a> .....	Page 19
<a href="#">Country of domicile</a> .....	Page 20
<a href="#">Subject of study</a> .....	Page 22
<a href="#">Institutional breakdown</a> .....	Page 23
<a href="#">UK comparison</a> .....	Page 25
<a href="#">Notes and definitions</a> .....	Page 27
<a href="#">List of tables</a> .....	Page 33
<a href="#">Annex A: Detailed statistical tables</a> .....	Page 38
<a href="#">Annex B: New HESA Methodology tables</a> .....	Page 71

## LIST OF FIGURES

<a href="#">Figure 1</a> – NI domiciled students enrolled at UK HEIs – 2005/06 to 2014/15.....	Page 12
<a href="#">Figure 2</a> – NI domiciled students enrolled at UK HEIs by age group, mode and level of study – 2014/15.....	Page 14
<a href="#">Figure 3</a> – NI domiciled students enrolled at UK HEIs by mode of study and multiple deprivation measure quintiles – 2014/15.....	Page 16
<a href="#">Figure 4</a> – NI domiciled students enrolled at UK HEIs by gender and subject area – 2014/15.....	Page 17
<a href="#">Figure 5</a> – Enrolments at NI HEIs – 2005/06 to 2014/15.....	Page 18
<a href="#">Figure 6</a> – Enrolments at NI HEIs by age group, mode and level of study – 2014/15.....	Page 20
<a href="#">Figure 7</a> – Enrolments at NI HEIs by domicile and level of study – 2014/15.....	Page 22
<a href="#">Figure 8</a> – Enrolments at NI HEIs by gender and subject area – 2014/15.....	Page 23
<a href="#">Figure 9</a> – Enrolments at NI HEIs by institution and level of study – 2014/15.....	Page 25
<a href="#">Figure 10</a> – Percentage change in enrolments at UK HEIs by level of study and location of institution – 2013/14 to 2014/15.....	Page 26
<a href="#">Map 1</a> – Northern Ireland students enrolled at GB Higher Education Institutions – 2014/15.....	Page 15
<a href="#">Map 2</a> – HE Enrolments at campuses in NI by country of domicile – 2014/15.....	Page 21

Statistics and Research Branch is responsible for the collection, quality assurance, analysis and publication of timely and accurate information derived from a wide range of statistical information returns supplied by the Further Education Colleges (FECs) across Northern Ireland and the Higher Education Statistics Agency (HESA) focused on Northern Ireland Higher Education Institutions and Northern Ireland domiciled students in attendance at any UK Higher Educational Institution. Statistical information is collected routinely from a variety of electronic individual level administrative system.

The Head of Branch is the Principal Statistician, Mrs. Laura Smyth. The Branch aims to present information in a meaningful way and provide advice on its uses to customers in the DEL Committee, Further Education Colleges, Universities, Professional Advisory Groups, policy branches within the DEL, other educational organisations, academia, private sector organisations, charity/voluntary organisations as well as the general public.

The statistical information collected is used to contribute to major exercises such as reporting on the performance of the Higher Education and Further Education sectors, other comparative performance exercises, target setting and monitoring, departmental research projects, development of service frameworks as well as policy formulation and evaluation. In addition, the information is used in response to a significantly high volume of Assembly questions and ad-hoc queries each year.

Information is disseminated through a number of key statistical publications, including: Higher Education enrolments, Higher Education qualifications, Destinations of leavers from Higher Education, Further Education activity, Essential Skills enrolments and outcomes, to name but a few.

A detailed list of these publications is available from:

Website: <https://www.delni.gov.uk/publications/type/statisticalreports>

## KEY STATISTICS FOR NORTHERN IRELAND DOMICILED ENROLMENTS IN UK HEIs

<b>We have fewer enrolments of NI students...</b>	Although fluctuating over the past ten years, the number of NI students enrolled at HEIs in NI, England, Scotland and Wales decreased by 2.7%, from 65,730 in 2005/06 to 63,965 in 2014/15. Between 2013/14 and 2014/15 the figure decreased by 0.9% (from 64,570).
<b>Most NI students study full-time...</b>	In 2014/15, 72.6% of enrolments were full-time and 27.4% were part-time. In comparison to 2013/14, full-time enrolments have increased by 0.4% (from 46,245 to 46,430) and part-time enrolments have decreased by 4.3% (from 18,325 to 17,535).
<b>Most NI students study in NI...</b>	Of the 63,965 NI students enrolled at UK HEIs in 2014/15, 69.2% were enrolled at an NI HEI, 24.8% at a HEI in GB and 5.9% were studying through the Open University.
<b>...however, outside of Northern Ireland, Scotland is the most popular region for NI students...</b>	The most popular regions for NI students who studied in GB were Scotland and the North West of England with 4,160 and 4,025 NI students enrolled at HEIs in each region respectively.
<b>More NI female students are enrolling...</b>	Females accounted for 56.4% of NI students enrolled at UK HEIs in 2014/15. A higher proportion of males (74.3%) were studying full-time than females (71.3%).
<b>Less NI students enrolling on full-time undergraduate courses...</b>	The number of NI students enrolled on <u>full-time first year undergraduate</u> courses at UK HEIs decreased by 1.4%, from 13,930 in 2013/14 to 13,735 in 2014/15.
<b>A quarter of NI student enrolments are on Narrow STEM courses...</b>	In 2014/15, 25.5% of NI students at UK HEIs were studying a Narrow STEM related subject and 47.1% studying a Broad STEM related subject.

## KEY STATISTICS FOR ENROLMENTS AT NORTHERN IRELAND INSTITUTIONS

<b>Enrolments in NI HEIs have remained similar in recent years...</b>	Despite fluctuating over the last ten academic years, the total number of students enrolled at NI HEIs decreased by 0.1%, from 56,525 in 2005/06 to 56,445 in 2014/15. Between 2013/14 and 2014/15 this figure increased by 0.1% (from 56,395).
<b>Most students enrolled at NI HEIs were studying full-time...</b>	In 2014/15, 67.8% of enrolments were full-time and 32.2% were part-time. In comparison to 2013/14, full-time enrolments have increased by 2.1% (from 37,505 to 38,280) and part time enrolments have decreased by 3.8% (from 18,890 to 18,165).
<b>Most students in NI HEIs are from NI...</b>	Of the 56,445 students enrolled at NI HEIs in 2014/15, 85.2% were from NI, 4.2% from the Republic of Ireland (RoI), 5.0% from Great Britain (GB), 0.7% from other EU countries and 5.0% from non EU countries.
<b>...however, we have students from a wide range of countries...</b>	In 2014/15 there were students enrolled at NI HEIs from over 100 different countries throughout the world. The Non-EU countries with the highest number of students at NI HEIs were China (895) and Malaysia (345).
<b>More females are enrolling in NI HEIs...</b>	Females accounted for 56.3% of students enrolled at NI HEIs in 2014/15. A higher proportion of males (71.4%) were studying full-time in comparison to females (65.0%).
<b>More students at NI HEIs are enrolling on full-time undergraduate courses...</b>	The number of <u>full-time first year undergraduate</u> enrolments at NI HEIs increased by 3.1%, from 11,145 in 2013/14 to 11,490 in 2014/15.
<b>Almost a quarter of enrolments at NI HEIs are on Narrow STEM courses...</b>	In 2014/15, 24.8% of NI HEIs students were studying a Narrow STEM related subject and 46.2% studying a Broad STEM related subject.

The United Kingdom Statistics Authority has designated these statistics as National Statistics, in accordance with the Statistics and Registration Service Act 2007 and signifying compliance with the Code of Practice for Official Statistics. Designation can be broadly interpreted to mean that the statistics: meet identified user needs; are well explained and readily accessible; are produced according to sound methods, and are managed impartially and objectively in the public interest. Once statistics have been designated as National Statistics it is a statutory requirement that the [Code of Practice](#) shall continue to be observed.

### Coverage

This statistical bulletin has been produced by the Department for Employment and Learning (DEL), Northern Ireland (NI) and presents information on students enrolled at Higher Education Institutions (HEIs) in the UK in 2013/14. The statistics presented in this bulletin cover a range of topics including changes over the last ten years, breakdown of the most recent enrolments, subject of study and where NI students go to study.

### Policy and Operational Context

The Minister for Employment and Learning has responsibility within the NI Executive and to the NI Assembly for the NI Higher Education Institutions (HEIs) and their students; and for student support for NI domiciled students in NI and the rest of the UK. The Assembly's DEL Committee has a scrutiny role in regard to these issues.

There continues to be a lot of media interest in the HE sector and HE statistics. With changes in fee regimes throughout the UK and the effect of the economic recession, the demand for HE is often in the spotlight.

It is within this context that DEL is implementing 'Graduating to Success', its Higher Education strategy which aims to promote and sustain the development of an internationally competitive sector, accessible to all who are able to benefit, and meeting the needs of the Northern Ireland economy and wider society. This bulletin forms part of the evidence base which shapes the future strategies and policies of DEL.

### Data Collection

The information presented in this statistical bulletin is based on data supplied by the Higher Education Statistics Agency (HESA). HESA is the official agency for the collection of information on publicly funded Higher Education (HE) institutions in the UK. It was set up in 1993 following the White Paper 'Higher Education: a new framework', which called for more coherence in HE statistics. HE institutions include all publicly-funded universities. The HESA data presented in this bulletin relate to students at HE institutions in the UK and therefore do not include HE enrolments at FE colleges in NI or GB, or at institutions in the Republic of Ireland.



## Rounding Strategy

To prevent the identification of individuals, figures throughout the report are rounded to the nearest 5, with 0, 1, and 2 rounded to 0. Due to rounding the sum of numbers in each row or column may not match the total shown. Percentages are based on unrounded figures. Percentages have also been rounded to one decimal place.

## Data Quality

All information presented in this bulletin has been validated and quality assured by HE institutions prior to publication. HE institutions are given a set period of time to submit the information to the Higher Education Statistics Agency (HESA). Following submission, both HESA and DEL perform a series of validation checks to ensure that information is consistent both within and across returns. Trend analyses are used to monitor annual variations and emerging trends. Queries arising from validation checks are presented to HE institutions for clarification and if required, returns may be amended and/or re-submitted. Finally, prior to publication of this information the data is presented to HE institutions for a final sign-off. More detail on the Quality of the Higher Education statistics is available via the link [Quality of Higher Education Statistics](#).

## Who will be interested in this bulletin?

The information presented in this statistical bulletin will be of interest to a wide variety of people. For example the statistics within and those derived from this bulletin are currently used by DEL policy officials in their role of assisting and advising the Minister for Employment and Learning to discharge his duties; by the NI Assembly and DEL committee to scrutinise the HE sector; by other government departments such as DFP as a key indicator in the education domain of the Northern Ireland Multiple Deprivation Measures; by prospective students to inform their choices around higher education; by local businesses to quantify the supply of graduates in their business area and by researchers and academics to try and understand the underlying trends in HE. Further details about the uses made of HE statistics can be found in the [notes and definitions](#) section.

## Main Uses of HE statistics

The main uses of these data are to monitor Higher Education enrolments and the characteristics of students enrolling both from Northern Ireland and to Northern Ireland Higher Education Institutions. This helps assess the HE institution performance, corporate monitoring, informing and monitoring related policy, and responding to parliamentary/assembly questions and ad-hoc queries from the public.

The Department for Employment and Learning (DEL) is responsible for the policy, strategic development and financing of the statutory HE sector. Analysis of data trends against key strategic priorities remain a crucial component of data development within DEL.

## HE Activity Elsewhere

Summary figures for the four UK administrations were published by HESA in their Statistical First Release on 14<sup>th</sup> January 2016.

This statistical first release can be viewed at the following page - <https://www.hesa.ac.uk/sfr224>

More in depth reports for England, Scotland and Wales can be downloaded from the following pages:

England - <http://www.bis.gov.uk/policies/higher-education/research-analysis>

Scotland - <http://www.scotland.gov.uk/Topics/Statistics/Browse/Lifelong-learning>

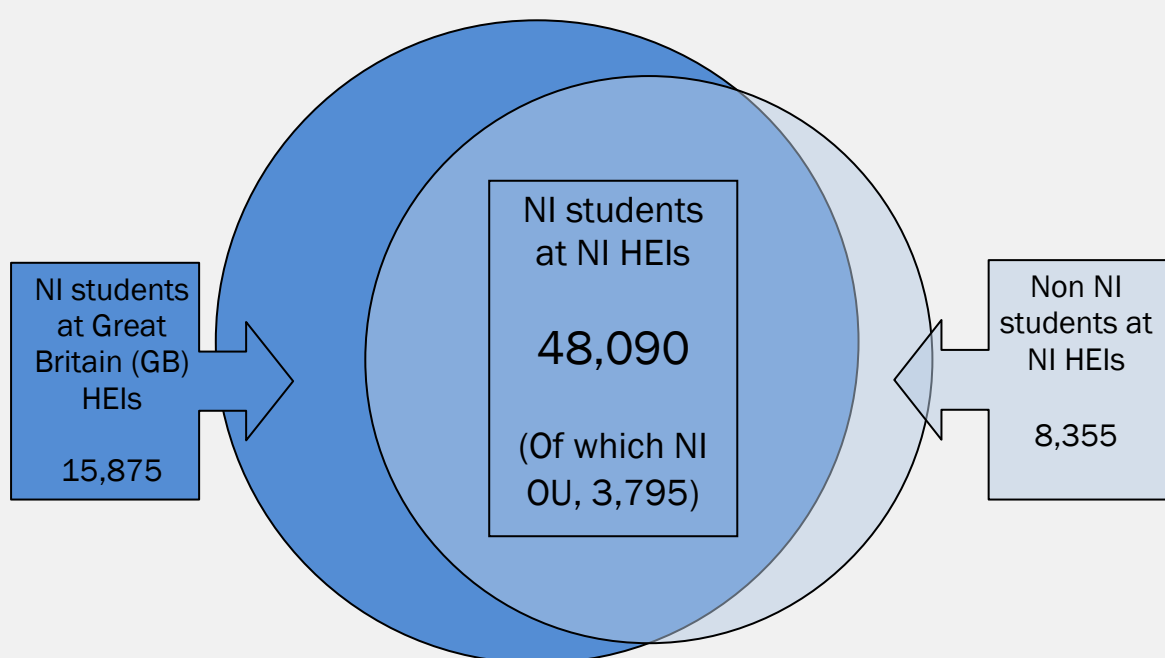
Wales - <http://wales.gov.uk/topics/statistics/theme/post16ed/higher-educa>



## STRUCTURE OF REPORT

The bulletin is divided into two sections. Section 1 focuses on NI domiciled students enrolled at HEIs in NI, England, Scotland or Wales. Section 2 concentrates on all students enrolled at NI HEIs. This division into two sections reflects the two distinct policy and operational responsibilities of the Minister and the Department. Furthermore, it is clear from customer feedback, the nature of questions on HE asked in the Northern Ireland Assembly, and coverage of HE issues in the local media, for example, that these two aspects are of interest to readers. Therefore it has been decided to present breakdowns of information on HE along these two dimensions in this bulletin.

It is worth noting that there is a large overlap between Section 1 and Section 2, namely NI students enrolled at NI HEIs are included in both sections. See the diagram below for details:

Diagram summarising the structure of the bulletin: Enrolments 2014/15



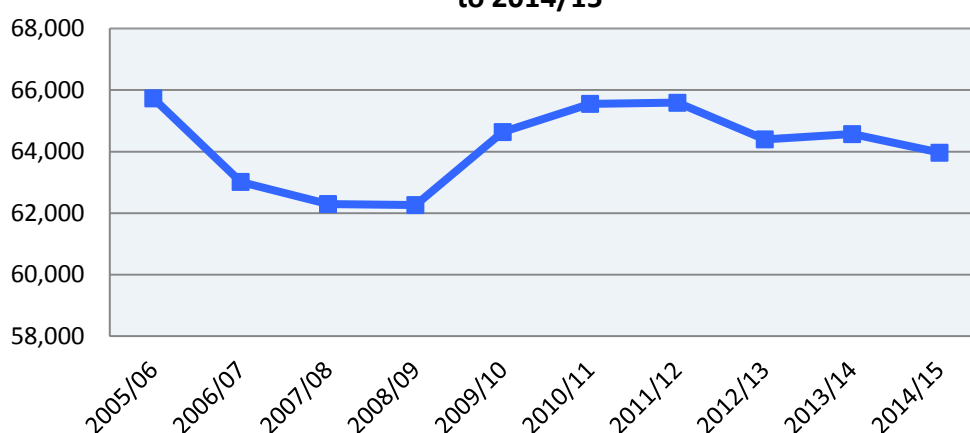
-  Section 1 - NI domiciled students enrolled at UK HEIs - 2014/15, (63,965)
-  Section 2 - Enrolments at NI HEIs - 2014/15, (56,445)

**SECTION 1: Northern Ireland domiciled students enrolled at UK Higher Education Institutions (Tables 1 to 6)**

**1.1 Change over the last 10 years – 2005/06 to 2014/15 (Tables 1 & 2, Figure 1)**

The number of NI students enrolled at HEIs in NI, England, Scotland and Wales decreased by 2.7% over the past 10 years. However, figure 1 illustrates that this decrease has not been constant. Enrolments fell from 65,730 in 2005/06 to 62,265 in 2008/09 and then rose year on year to 65,590 in 2011/12. The number of enrolments then fell to 64,400 in 2012/13 before rising to 64,570 in 2013/14. The number of enrolments decreased by 0.9% between 2013/14 and 2014/15, from 64,570 to 63,965 (Tables 1a, 1b and 1d).

**Figure 1 - NI domiciled students enrolled at UK HEIs - 2005/06 to 2014/15**



A higher proportion of NI students now leave NI to study in GB than did a decade ago, increasing from 23.9% of all NI domiciled students in 2005/06 to 24.8% in 2014/15. However, this increase in proportion is also not consistent and peaked at 26.7% in 2011/12. When we examine the full-time first year undergraduate cohort, this proportion has only increased from 28.8% to 31.0% over the ten year period. Again this increase in proportion is not consistent and peaked at 35.9% in 2011/12 (Tables 1a and 2a).

Over the 10 year period, the number of NI students going to GB to study increased by 1.0%, from 15,715 in 2005/06 to 15,870 in 2014/15; those studying through the Open University increased by 3.3%, from 3,680 to 3,800 over the same period; while NI students at NI HEIs decreased by 4.4%, from 46,340 in 2005/06 to 44,295 in 2014/15 (Tables 1a and 1b).

In terms of level of study, 'first degree' courses have experienced the largest percentage increase of NI domiciled students, rising by 4.5% over the last ten years, from 45,475 in 2005/06 to 47,525 in 2014/15. While 'postgraduate' enrolments have increased by 2.1% over the same period, from 9,755 to 9,955, the number of students enrolled on 'other undergraduate' courses (such as foundation degrees, diplomas, HNDs and HNCs) have fallen by 38.3%, from 10,500 in 2005/06 to 6,480 in 2014/15 (Table 1c).

Full-time enrolments rose by 3.0% over the decade, compared to a 15.1% decrease in part-time enrolments (Table 1b).

## 1.2 Breakdown of enrolments – 2014/15 (Tables 1 to 4, Figure 2)

In 2014/15 there were 63,965 NI students enrolled at UK HEIs, showing a decrease of 0.9% from 64,570 in 2013/14 (Table 1d).

Mode of study – In 2014/15, 72.6% of enrolments were full-time and 27.4% were part-time. In comparison to 2013/14, full-time enrolments have increased by 0.4%, from 46,245 in 2013/14 to 46,430 in 2014/15; and part-time enrolments have decreased by 4.3%, from 18,325 in 2013/14 to 17,535 in 2014/15 (Table 1e).

Level of study – Just under three quarters (74.3%) of NI students were enrolled on a ‘first degree’ course, 10.1% on ‘other undergraduate’ courses and 15.6% on a ‘postgraduate’ course in 2014/15. ‘First degree’ enrolments have remained fairly constant, while ‘other undergraduates’ decreased by 5.2%, from 6,840 in 2013/14 to 6,480 in 2014/15, and ‘postgraduates’ decreased by 2.5%, from 10,210 to 9,955 over the same period (Tables 1f and 1g).

The number of NI domiciled full-time first year undergraduate enrolments at UK HEIs decreased by 1.4%, from 13,930 in 2013/14 to 13,735 in 2014/15 (Table 2c).

Gender – In recent history more females progress into higher education than males. In 2005/06 females made up 59.4% of NI students enrolled at UK HEIs. Ten years later, in 2014/15, this proportion has decreased with females representing 56.4% and males 43.6%. This gender gap does not begin at the point of entry to HE, but can be observed early on in the educational system. In NI, females are more likely to stay on in full-time education at age 16. They are more likely to be entered for A levels, more likely to pass them, and also more likely to do better (achieve an A grade, including A\*) than males (Table 3a). (Source: DENI Statistical Press Release: Year 12 and Year 14 Examination Performance at Post Primary Schools in 2014/15<sup>1</sup>).

In 2014/15 a higher proportion of males (74.3%) were studying full-time in comparison to females (71.3%), with 25.7% of males and 28.7% of females enrolled on part-time courses (Table 3b).

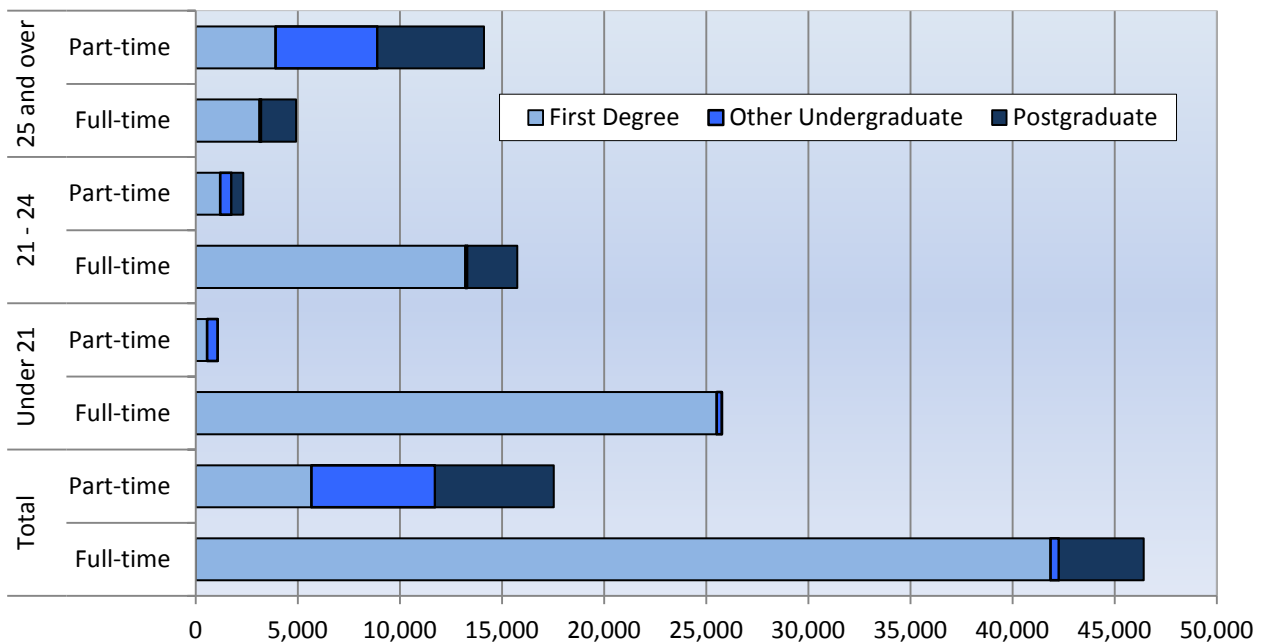
A higher proportion of males than females were enrolled on ‘first degree’ courses in 2014/15 – 76.4% compared to 72.7%, whereas females (10.7%) were more likely than males (9.3%) to be undertaking an ‘other undergraduate’ course. Females (16.6%) were also more likely than males (14.3%) to be enrolled on ‘postgraduate’ courses (Table 3c).

Age – In 2014/15, 42.0% of NI domiciled students enrolled at UK HEIs were aged ‘under 21’, 28.3% were aged ‘21 to 24’ and 29.7% were aged ‘25 and over’ (Table 4a).

---

<sup>1</sup> <https://www.deni.gov.uk/sites/default/files/publications/de/sb-9-2015-year-12-and-Year-14-examination-post-primary-schools-in-northern-ireland-2014-15.pdf>

**Figure 2 : NI domiciled students enrolled at UK HEIs by age group, mode and level of study - 2014/15**



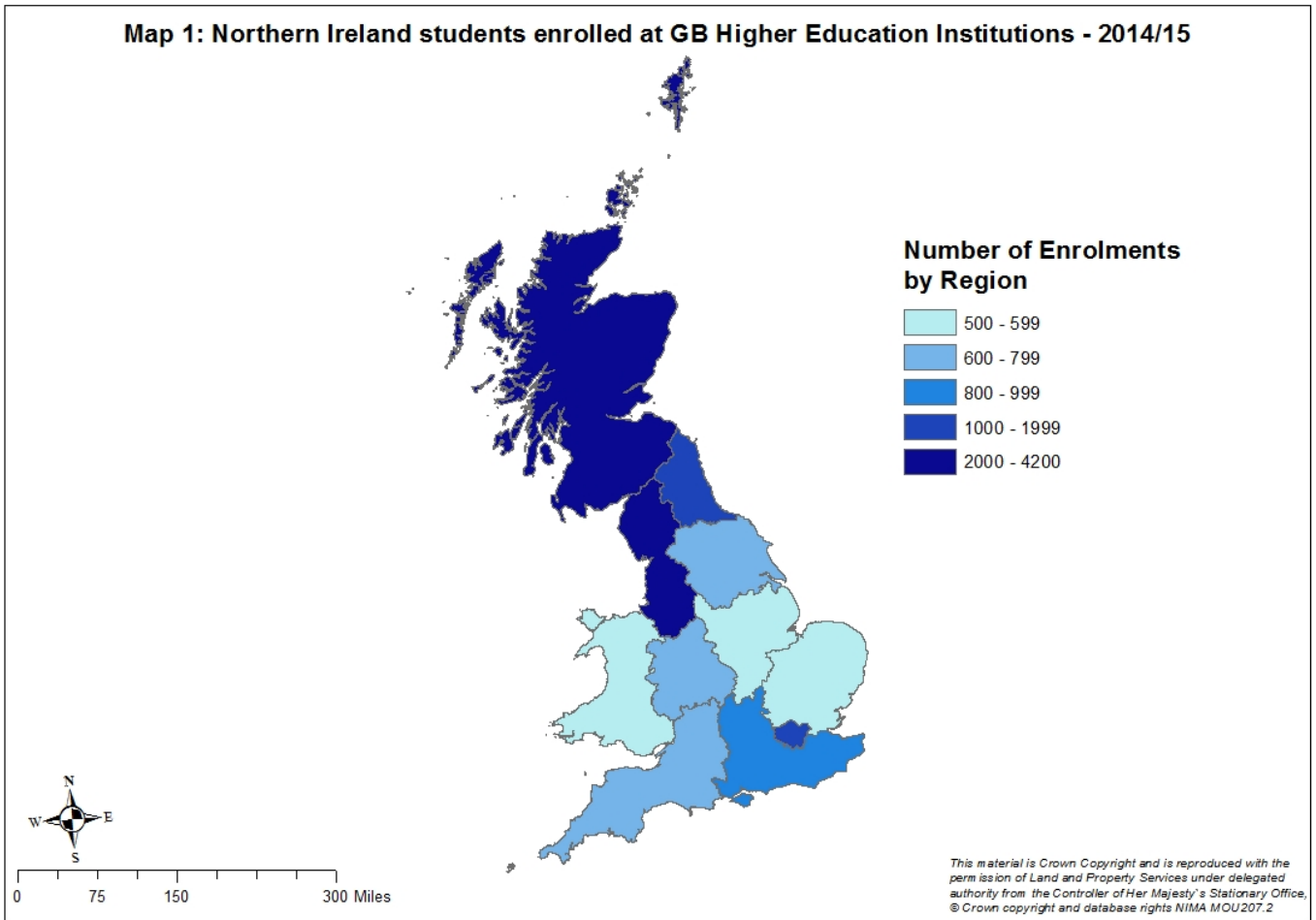
The majority of younger students (those aged under 21) tend to enter HE straight from school and continue to study on a full-time basis. Older students (aged 25 and over) are more likely to study part-time. Many older students are combining work with part-time study and see HE as a way to develop their career, or to enable them to change to a different career. The majority (96.0%) of NI students aged 'under 21' were enrolled on a full-time course, as were 87.1% of those aged '21 to 24'. In comparison the majority (74.2%) of those aged '25+' were enrolled on part-time courses (Table 4c, Figure 2).

### 1.3 Location of Study (Tables 1 to 3 & 5)

There are various reasons why students leave NI to study, including their choice of subject, for example some courses such as veterinary science are not supplied in Northern Ireland. However, available research<sup>2</sup> would suggest that the majority of those who plan to leave NI to study do so out of choice. Indeed, figures from the latest Destinations of Leavers from Higher Education survey<sup>3</sup> show that around 64.4% of full-time students who left NI to study in GB did not return to NI to work six months after qualifying.

<sup>2</sup> <https://www.delni.gov.uk/sites/default/files/publications/del/After%20School%20Attitudes%20%26%20perceptions%20of%20Northern%20Ireland%20school%20leavers%20towards%20higher%20%26%20further%20education%2C%20training%20%26%20employment.pdf>

<sup>3</sup> <https://www.delni.gov.uk/articles/destinations-leavers-higher-education>



Of the 63,965 NI students enrolled at UK HEIs in 2014/15, 69.2% were enrolled at an NI HEI, 24.8% at an HEI in GB and 5.9% were studying through the Open University (Table 1a).

There were 15,870 NI students studying at a HEI in GB in 2014/15. The map above illustrates how many NI students were studying in each region of GB. The darker the shade of blue the higher the number of NI students enrolled at an HEI in that region (Table 1a).

The most popular regions for NI students who studied in GB were Scotland and the North West of England with 4,160 and 4,025 NI students enrolled at HEIs in each region respectively. Other popular regions were the North East of England with 1,640 NI students and London with 1,175 (Table 5a).

In Scotland the HEIs with the most NI students in 2014/15 were the University of Glasgow (745), the University of Dundee (740) and the University of Edinburgh (445). In the North West, Liverpool John Moore's University alone had 1,380 NI student enrolments, making it the most popular HEI in GB for NI students. In the North East, the University of Northumbria at Newcastle had 815 students from NI. In fact it is worth noting that NI students are enrolled at 160 of the 163 publicly funded HEIs in the UK (Table 5b).

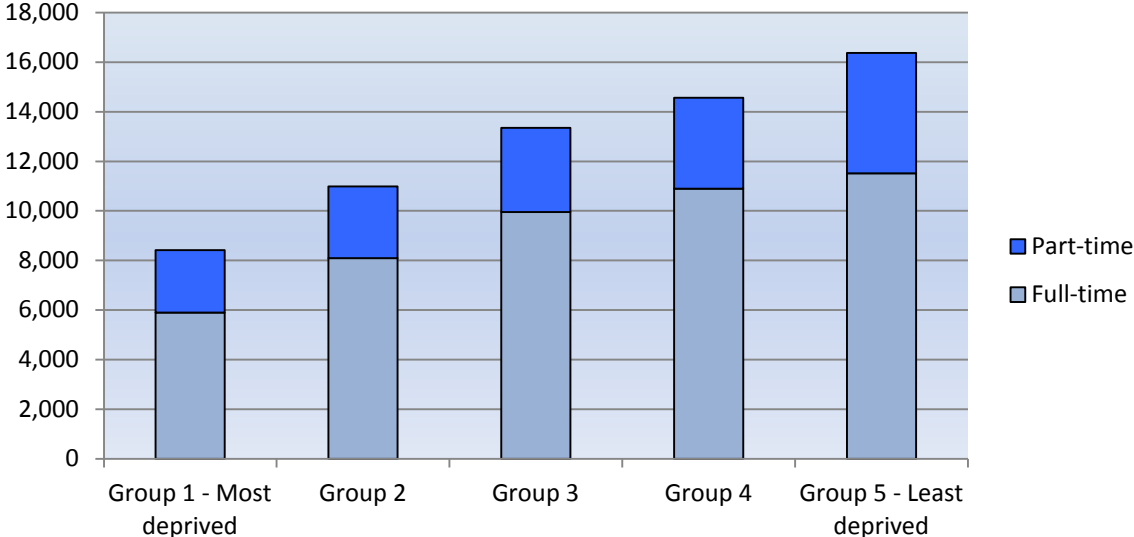
In terms of gender, similar proportions of males and females study in GB, with around 25% of both NI domiciled males and females enrolled at a GB HEI (24.6% of males and 25.0% of females) (Table 3d).

Of the 13,735 NI domiciled full-time first year undergraduate enrolments at UK HEIs in 2014/15, 69.0% were enrolled at an NI HEI and 31.0% were enrolled at a HEI in GB. These proportions have not changed substantially from the previous academic year (Table 2b).

**1.4 Multiple Deprivation Measure quintiles (Table 6, Figure 3)**

Of the 63,690 NI domiciled students enrolled at UK HEIs in 2014/15, the highest proportion (25.7%) were from the least deprived multiple deprivation area in NI (quintile 5), whereas only 13.2% were from the most deprived multiple deprivation area (quintile 1).

**Figure 3: NI domiciled students enrolled at UK HEIs by mode of study and multiple deprivation measure quintile - 2014/15**



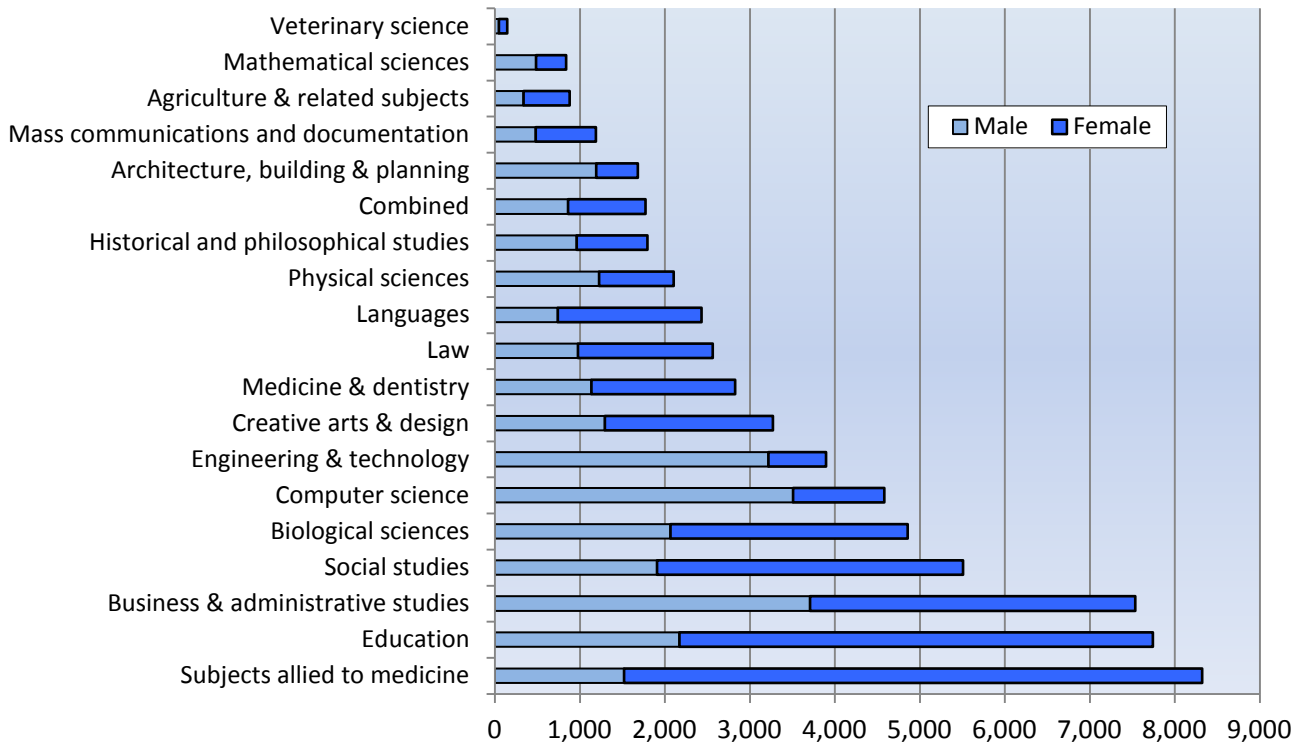
**1.5 Subject of Study (Table 7, Figure 4)**

In 2014/15, the most popular subject areas of NI students studying at UK HEIs were ‘subjects allied to medicine’ (which includes subjects such as Nursing, Pharmacy, Occupational Therapy and Physiotherapy) with 8,320 (13.0%) enrolments, ‘education’(which includes subjects such as Training teachers, Research study skills in education and Academic studies in education) with 7,745 (12.1%) enrolments and ‘business & administrative studies’ (which includes subjects such as business studies, management studies, accounting, marketing and finance) with 7,535 (11.8%) enrolments (Table 7c).

Females accounted for 81.7% of enrolments in ‘subjects allied to medicine’, 71.9% of those studying ‘education’ and 69.4% of those studying ‘languages’. Males accounted for 82.6% of those studying ‘engineering & technology’, 76.6% of ‘computer science’ enrolments and 70.9% of ‘architecture, building & planning’ enrolments (Table 7c, Figure 4).



**Figure 4 : NI domiciled students enrolled at UK HEIs by gender and subject area - 2014/15**



The key priority identified within the Programme for Government by the NI Executive is to grow a sustainable economy and invest in the future. To help achieve this, a target has been set to increase the uptake in economically relevant Science, Technology, Engineering and Mathematics (STEM<sup>4</sup>) places in education.

In 2014/15, 47.1% of NI students at UK HEIs were studying a Broad STEM related subject. A higher proportion of males (52.9%) were studying Broad STEM subjects compared to females (42.6%). Full-time students (53.0%) were more likely to be studying Broad STEM subjects than part-time students (31.6%) (Tables 7a and 7b).

In 2014/15, 25.5% of NI students at UK HEIs were studying a Narrow STEM related subject. A higher proportion of males (37.7%) were studying Narrow STEM subjects compared to females (16.0%). Full-time students (29.6%) were more likely to be studying Narrow STEM subjects than part-time students (14.5%) (Tables 7a and 7b).

<sup>4</sup> Science, Technology, Engineering and Maths – see notes to readers for full description.

## SECTION 2: Enrolments at Northern Ireland Higher Education Institutions (Tables 8 to 14)

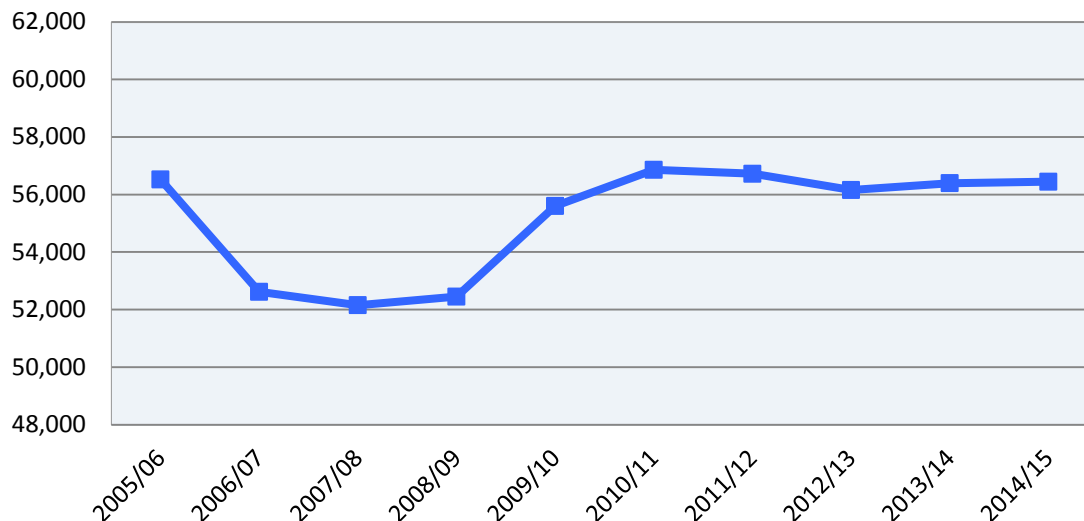
This bulletin incorporates changes that the Higher Education Statistics Agency (HESA) made to the allocation of Open University (OU) students in the 2013/14 student record. This means that enrolments and qualifications registered at one of the OU's national centres in Wales, Scotland and Northern Ireland will now contribute to the totals of those countries, where statistics are shown by country of provider. Previously all OU enrolments and qualifications were counted as being within England, where the OU has its administrative centre.

The Department for Employment and Learning (DEL) has adopted this new methodology going forward from 2014/15. In addition, any historical data affected by this change in methodology now reflects the new allocation method for OU.

### 2.1 Change over the last 10 years – 2005/06 to 2014/15 (Tables 8 & 9, Figure 5)

Over the last ten academic years the total number of students enrolled at NI HEIs decreased by 0.1%. Figure 5 below illustrates the pattern of the change in enrolments over this period. Enrolments fell year on year from 56,525 in 2005/06 to 52,155 in 2007/08. Enrolments then rose to 56,860 in 2010/11 before falling slightly in the next two academic years to reach 56,155 in 2012/13. Enrolments have increased slightly in the last two academic years to reach 56,445 in 2014/15 (0.1% increase between 2013/14 and 2014/15) (Tables 8e and 8f).

**Figure 5 - Enrolments at NI HEIs - 2005/06 to 2014/15**



Students from NI now account for a smaller proportion of the total population of students at NI HEIs than they did 10 years ago. In 2005/06 students from NI accounted for 88.5% (50,015) of the total population of students at NI HEIs, however by 2014/15 this figure has decreased to 85.2% (48,090). Over this period NI HEIs have seen a large increase in students from outside NI: The number of students from both GB and non EU countries increased by 163.9% (1,070 to 2,825) and 102.8% (1,380 to 2,795) respectively. The number of students from other EU countries showed a smaller increase of 8.1% (from 360 to 385) while students from RoI decreased by 36.6% (from 3,700 to 2,345) (Tables 8a and 8e).

The large increase in Non EU students over the past ten years is largely due to there being 740 full-time undergraduate and postgraduate Non EU domiciled students enrolled on courses that have been jointly developed by the Ulster University and the Queen Anne Business School in Birmingham (170) and London (570) in 2014/15. Although these students are based in Birmingham and London they are registered as Ulster University students (Table 8d).

In terms of level of study, 'first degree' experienced an increase of 6.4% (from 36,130 to 38,450) over the ten year period. Enrolments on 'postgraduate courses also showed an increase of 6.7% (from 10,590 to 11,295), while 'other undergraduate' courses (such as foundation degrees, diplomas, HNDs and HNCs) have fallen by 31.7% (from 9,805 to 6,695) over the same time period (Table 8g).

The number of full-time enrolments increased by 7.3%, from 35,675 in 2005/06 to 38,280 in 2014/15, whereas there was a 12.9% decrease in part-time enrolments over the same period, from 20,845 to 18,165 (Table 8h).

## **2.2 Breakdown of enrolments – 2014/15 (Tables 8 to 11, Figure 6)**

In 2014/15, there were 56,445 students enrolled at NI HEIs, showing an increase of 0.1% from 56,395 in 2013/14 (Table 8f).

Mode of study – In 2014/15, 67.8% of enrolments were full-time and 32.2% were part-time. In comparison to 2013/14, full-time enrolments have increased by 2.1% (from 37,505 to 38,280) and part-time enrolments have decreased by 3.8% (from 18,890 to 18,165) (Tables 8i and 8j).

Level of study – In 2014/15, 68.1% of students were enrolled on a 'first degree' course, 11.9% on 'other undergraduate' courses and 20.0% on a 'postgraduate' course. Between 2013/14 and 2014/15, 'first degree' enrolments have increased by 2.0% (from 37,710 to 38,450), while 'other undergraduates' have decreased by 3.1% (from 6,915 to 6,695) and 'postgraduates' decreased by 4.1% (from 11,775 to 11,295) (Tables 8k and 8l).

The number of full-time first year undergraduate enrolments at NI HEIs increased by 3.1% from 11,145 in 2013/14 to 11,490 in 2014/15 (Table 9b).

Gender – In recent history more females progress into higher education than males. This gender gap does not begin at the point of entry to HE, but can be observed early on in the educational system. In NI, girls are more likely to stay on in full-time education at age 16. They are more likely to be entered for A levels, more likely to pass them, and also more likely to do better (achieve an A grade, including A\*) than boys (Source: DENI Statistical Press Release: Year 12 and Year 14 Examination Performance at Post Primary Schools in 2014/15<sup>5</sup>).

Of the 56,445 students enrolled at NI HEIs in 2014/15, 56.3% were female and 43.7% were male (Table 10a).

---

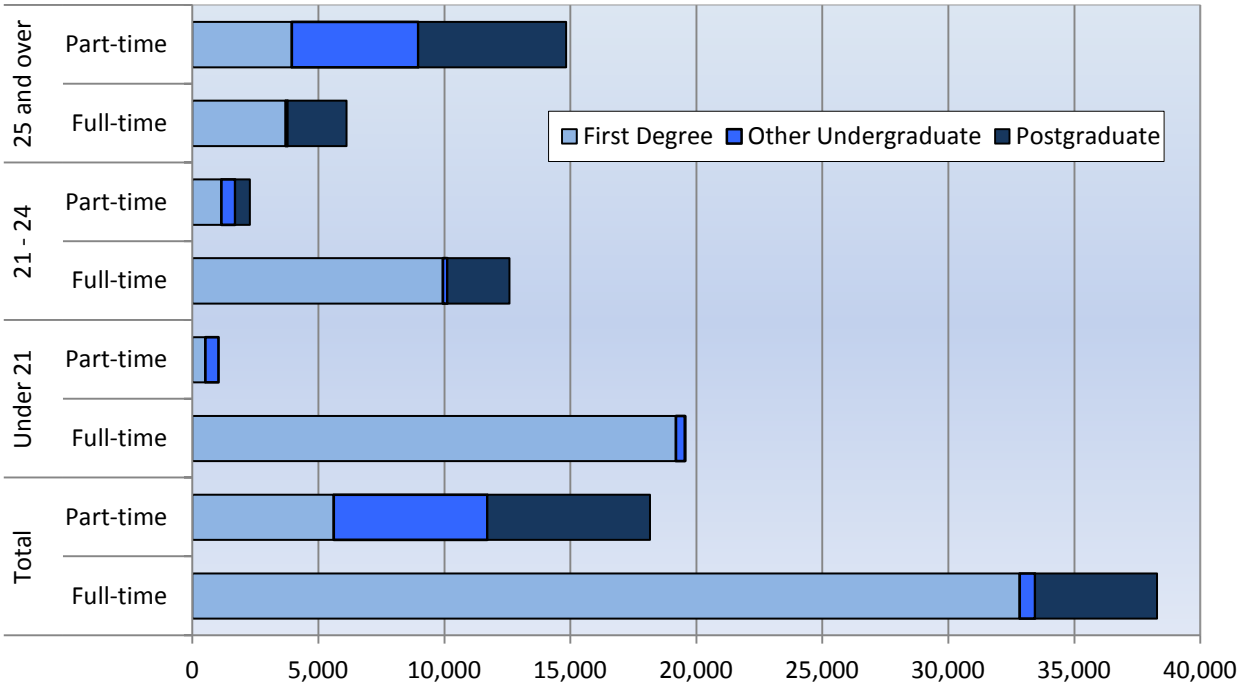
<sup>5</sup> <https://www.deni.gov.uk/sites/default/files/publications/de/sb-9-2015-year-12-and-Year-14-examination-post-primary-schools-in-northern-ireland-2014-15.pdf>

A higher proportion of males (71.4%) were studying full-time in comparison to females (65.0%), with 28.6% of males and 35.0% of females enrolled on a part-time course (Table 10b).

Males (71.7%) were more likely to be undertaking a ‘first degree’ course than females (65.3%), while a higher proportion of females (12.8%) were enrolled on an ‘other undergraduate’ course than males (10.7%) and on ‘postgraduate’ courses (17.6% of males and 21.9% of females) (Table 10d).

Age – In 2014/15, 36.5% of students enrolled at NI HEIs were aged ‘under 21’, 26.3% were aged ‘21 to 24’ and 37.1% were ‘25 and over’ (Table 11a).

**Figure 6 : Enrolments at NI HEIs by age group, mode and level of study - 2014/15**

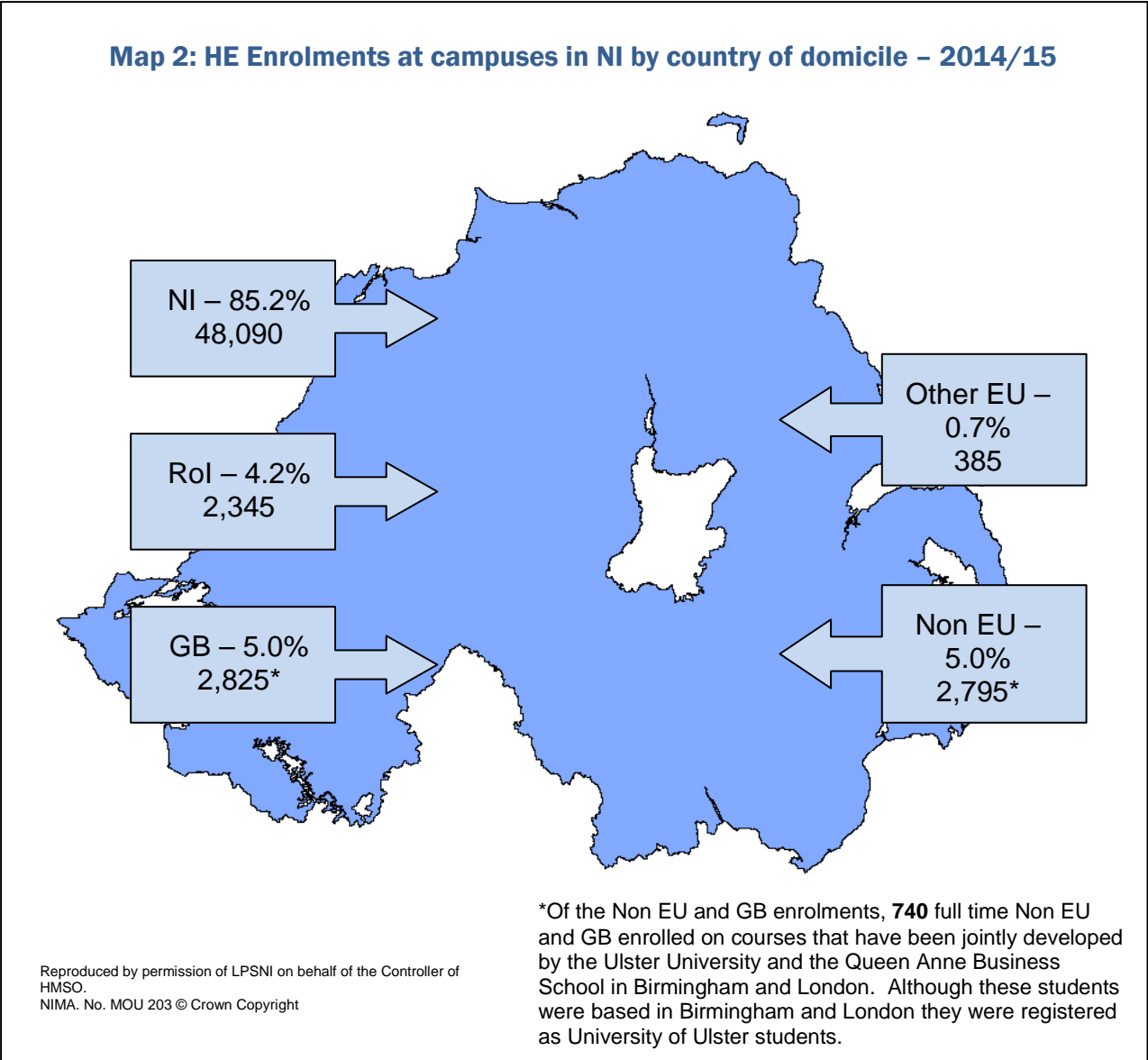


The majority of younger students (those aged under 21) tend to enter HE straight from school and continue to study on a full-time basis. Older students (aged 25 and over) are more likely to study part-time. Many older students are combining work with part-time study and see HE as a way to develop their career, or to enable them to change to a different career. The majority (94.9%) of students at NI HEIs aged ‘under 21’ were enrolled on a full-time course, as were 84.6% of those aged ‘21 to 24’. In comparison the majority (70.8%) of those aged ‘25+’ were enrolled on part-time courses (Table 11d, Figure 6).

**2.3 Country of Domicile (Tables 8 to 10, Figure 7)**

Over the last 10 years NI HEIs have experienced a large increase in the number of enrolments of students from outside NI.

Of the 56,445 students enrolled at NI HEIs in 2014/15, 85.2% were from NI, 5.0% from Great Britain (GB), 5.0% from non EU countries, 4.2% from the Republic of Ireland (RoI) and 0.7% from other EU countries (Table 8a, Map 2).

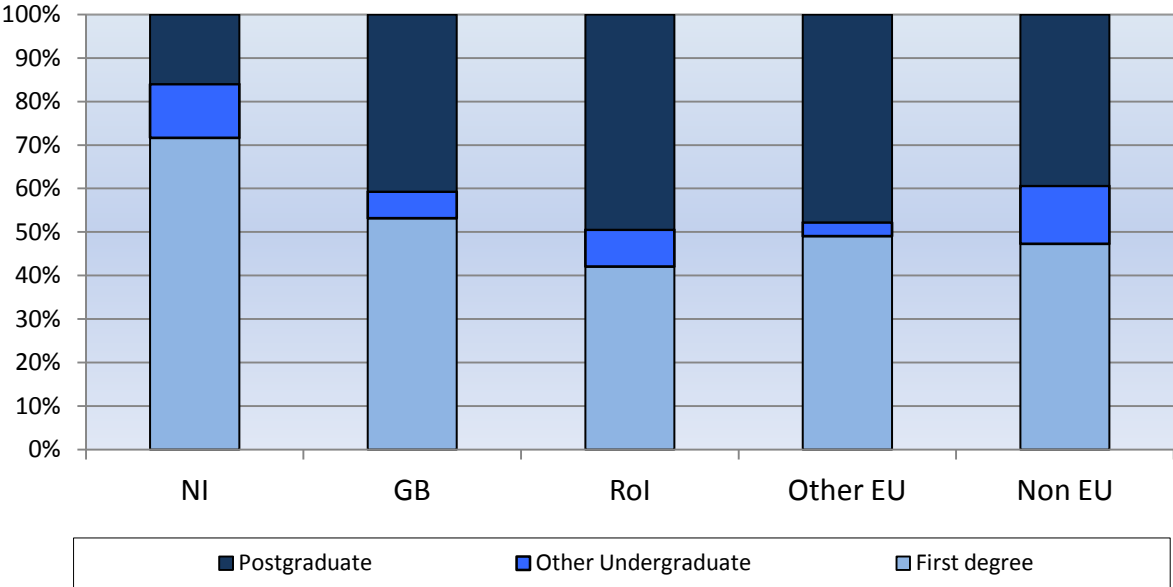


The countries from outside NI, GB and the RoI which had the most students enrolled at campuses in NI (not including those registered to Ulster University but based in Birmingham and London) in 2014/15 were China - 705, Malaysia - 345, United States - 185, Hong Kong (Special Administrative Region of China) - 135 and Germany - 105. In fact, in 2014/15 there were students enrolled at NI HEIs from over 100 different countries throughout the world (Table 8c).

The 740 Non EU students registered to Ulster University but based in Birmingham and London were made up of students from around 50 different countries. The countries with the most students were China-190, Bangladesh-90, Colombia - 55, Sri Lanka-50 and Pakistan-45 (Table 8d).

Figure 7 below illustrates the contrast in level of study for NI students and those from other countries. The majority of students at NI HEIs from outside NI are enrolled on 'postgraduate' or 'other undergraduate' courses, whereas the majority of students from NI are enrolled on 'first degree' courses.

**Figure 7 : Enrolments at NI HEIs by domicile and level of study - 2014/15**

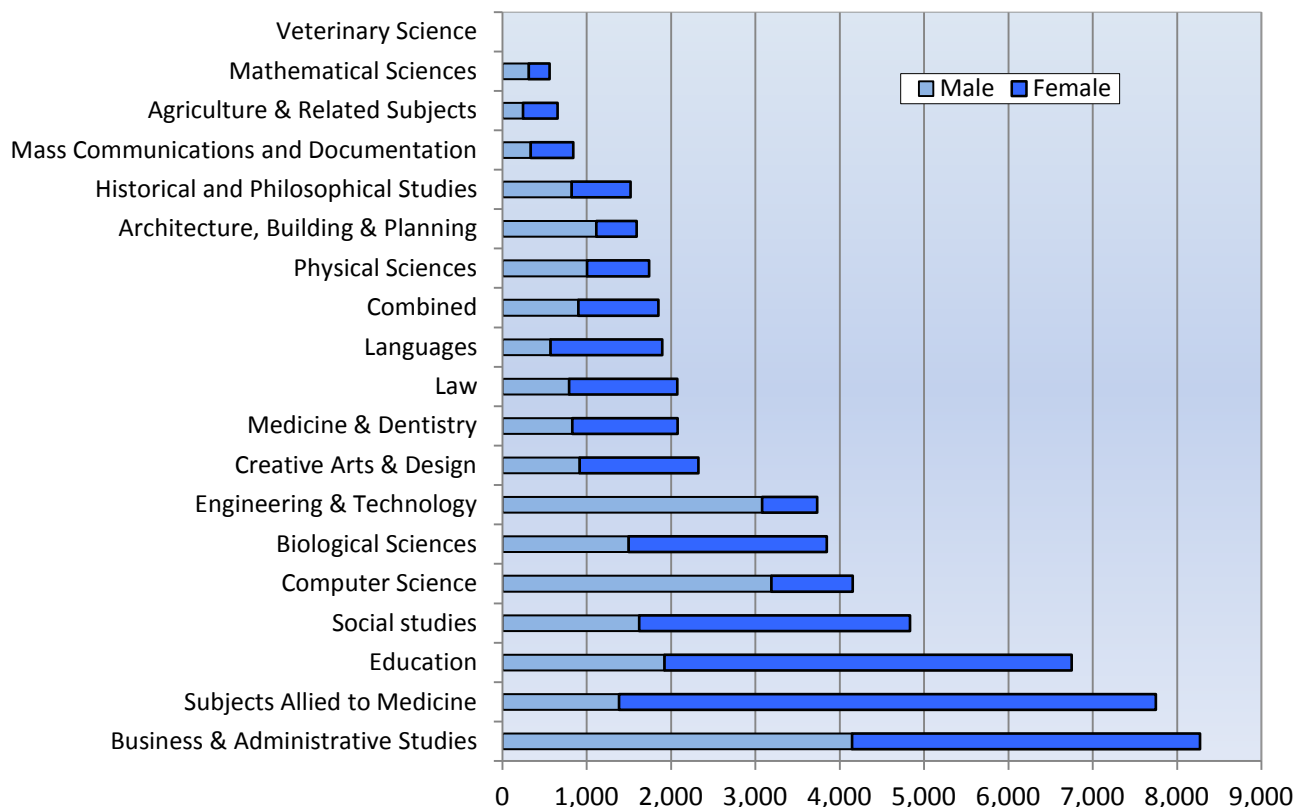


**2.4 Subject of Study (Table 12, Figure 8)**

In 2014/15 the most popular subject areas which students were studying at NI HEIs were 'business & administrative studies' (which includes subjects such as business studies, management studies, accounting, marketing and finance) with 8,270 (14.6%) enrolments; 'subjects allied to medicine' (which includes subjects such as Nursing, Pharmacy, Occupational Therapy and Physiotherapy) with 7,745 (13.7%) enrolments and 'education' (which includes subjects such as Training teachers, Research study skills in education and Academic studies in education) with 6,750 (12.0%) enrolments (Table 12c).

Females accounted for 82.2% of enrolments in 'subjects allied to medicine', 71.5% of those studying 'education' and 69.9% of those studying 'languages'. Males accounted for 82.5% of those studying 'engineering & technology', 76.8% of 'computer science' enrolments and 70.1% of 'architecture, building & planning' enrolments (Table 12c, Figure 8).

**Figure 8 : Enrolments at NI HEIs by gender and subject area - 2014/15**



The key priority identified within the Programme for Government by the NI Executive is to grow a sustainable economy and invest in the future. To help achieve this, a target has been set to increase the uptake in economically relevant Science, Technology, Engineering and Mathematics (STEM<sup>6</sup>) places in education.

In 2014/15, 46.2% of students at NI HEIs were studying a Broad STEM related subject. A higher proportion of males (51.3%) were studying Broad STEM subjects compared to females (42.3%). Full-time students (52.7%) were more likely to be studying Broad STEM subjects than part-time students (32.5%) (Tables 12a and 12b).

In 2014/15, 24.8% of students at NI HEIs were studying a Narrow STEM related subject. A higher proportion of males (36.8%) were studying Narrow STEM subjects compared to females (15.6%). Full-time students (30.1%) were more likely to be studying Narrow STEM subjects than part-time students (13.8%) (Tables 12a and 12b).

## 2.5 Institutional breakdown (Table 13, Figure 9)

Of all students enrolled at NI HEIs in 2014/15, 46.2% were enrolled at Ulster University, 42.3% at the Queen’s University Belfast, 2.8% at Stranmillis University College, 2.0% at St Mary’s University College and 6.7% at the NI campuses of the Open University (Table 13b).

<sup>6</sup> Science, Technology, Engineering and Maths – see notes to readers for full description.

## **Ulster University**

Ulster University enrolments decreased by 0.5% between 2013/14 and 2014/15 (from 26,200 to 26,085). Full-time enrolments increased by 0.4% (from 18,650 to 18,720) while part-time enrolments decreased by 2.5% (from 7,555 to 7,365) (Table 13a).

The number of full-time students enrolled on courses jointly developed by Ulster University and the Queen Anne Business School in Birmingham and London, and based in Birmingham and London, decreased by 3.5%, from 1,375 in 2013/14 to 1,330 in 2014/15 (Table 13c).

The number of full-time enrolments at Ulster University campuses based in NI (therefore not including UU Birmingham or London) increased by 0.7%, from 17,270 in 2013/14 to 17,390 in 2014/15, whereas part-time enrolments based in NI decreased by 2.5%, from 7,555 in 2013/14 to 7,365 in 2014/15 (Table 13d).

Between 2013/14 and 2014/15 'first degree' enrolments at Ulster University showed an increase of 1.1% (from 18,155 to 18,350) and 'other undergraduate' enrolments increased by 1.9% (from 2,180 to 2,220) while 'postgraduate' decreased by 6.1% (from 5,865 to 5,510) (Table 13e).

## **Queen's University Belfast**

Enrolments at Queen's University Belfast increased by 2.3% between 2013/14 and 2014/15, from 23,320 to 23,855. Full-time enrolments increased by 4.2% (from 17,020 to 17,730) while part-time enrolments decreased by 2.8% (from 6,300 to 6,120) (Table 13d).

'First degree' enrolments increased by 3.1% (from 14,700 to 15,155) between 2013/14 and 2014/15, while 'postgraduate' enrolments increased by 1.0% (from 4,950 to 4,995) and all 'other undergraduates' increased by 0.8% (from 3,670 to 3,700) (Table 13e).

## **Open University (where the National centre is located in Northern Ireland)**

Enrolments at the Open University decreased by 8.2%, between 2013/14 and 2014/15, from 4,135 to 3,795. There were no full-time enrolments so this decrease is reflective of part-time enrolments (Table 13d).

'First degree' enrolments increased by 2.0% (from 3,005 to 3,065) between 2013/14 and 2014/15, while 'other undergraduate' enrolments decreased by 36.5% (from 880 to 560) and 'postgraduate' decreased by 30.7% (from 250 to 175) (Table 13e).

## **Stranmillis University College**

Enrolments at Stranmillis University College increased by 1.9% from 1,525 in 2013/14 to 1,555 in 2014/15. This increase can be attributed to part-time enrolments where there was an increase of 7.9% (from 555 to 600), while full-time enrolments decreased by 1.5% (from 970 to 955) (Table 13d).

'First degree' enrolments increased by 3.9% (from 985 to 1,025) over this period and 'other undergraduate' enrolments increased by 18.3% (from 180 to 215) while 'postgraduate' enrolments decreased by 11.7% (from 360 to 315) (Table 13e).

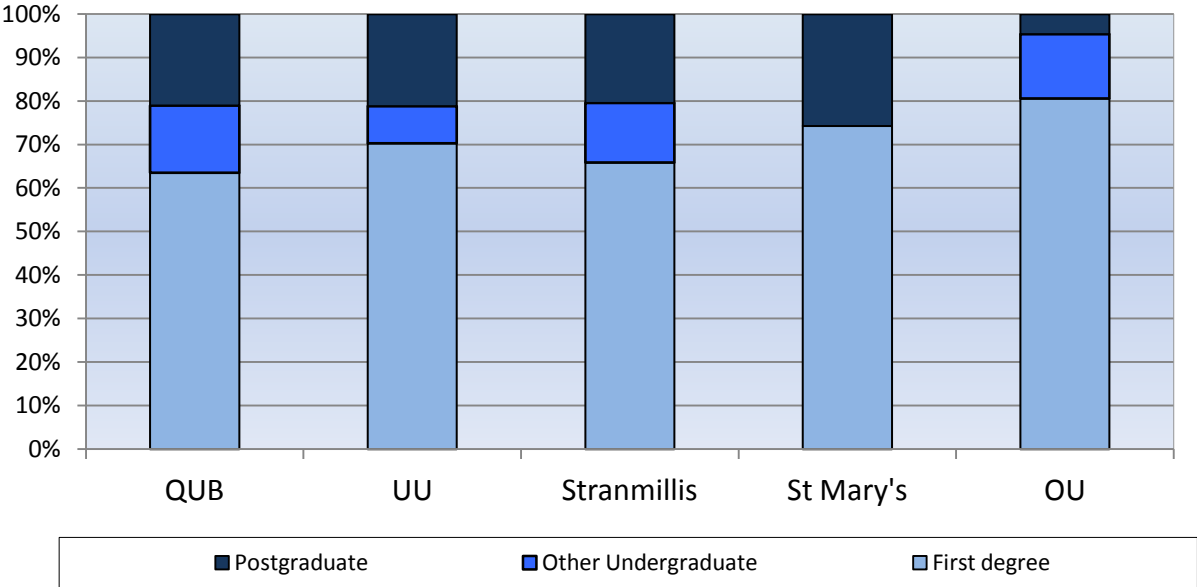


**St Mary’s University College**

The number of students at St. Mary’s University College decreased by 4.5% from 1,210 in 2013/14 to 1,155 in 2014/15. This decrease can be attributed to part-time enrolments which fell by 17.1% (from 345 to 285) while full-time enrolments increased by 0.5% (from 865 to 870) (Table 13d).

‘First degree’ enrolments remained fairly constant at 860, while ‘postgraduate’ enrolments decreased by 15.1% (from 350 to 295). There were no ‘other undergraduates’ at this institution (Table 13e).

**Figure 9 : Enrolments at NI HEIs by Institution and level of study - 2014/15**



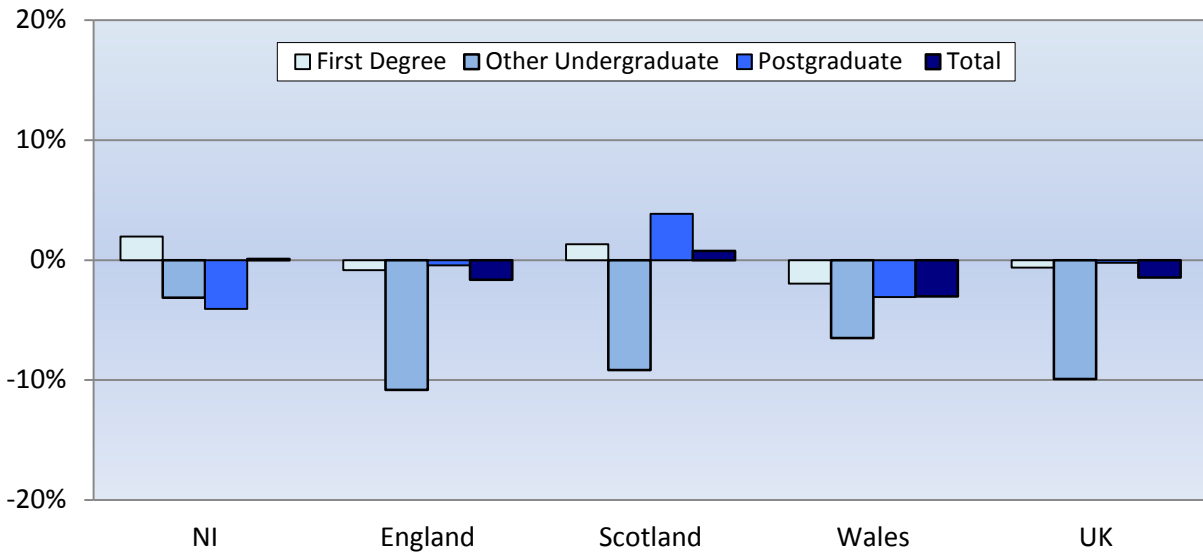
**2.6 UK Comparison (Table 14, Chart 10)**

In 2014/15 there were 2,266,075 students enrolled at HEIs throughout the UK. In comparison to 2013/14, student numbers have decreased by 1.4% (from 2,299,355) (Table 14a).

Over the same period enrolments at English HEIs fell by 1.6% (from 1,875,020 to 1,844,095) and Welsh HEIs showed a decrease of 3.0% (from 137,135 to 132,965). However, Scottish HEIs showed an increase of 0.8% (from 230,805 to 232,570), while enrolments at NI HEIs increased by 0.1% (from 56,395 to 56,445) (Table 14a).

The number of ‘first degree’ enrolments increased in NI HEIs and Scottish HEIs and fell in English HEIs and Welsh HEIs from 2013/14, while the number of ‘other undergraduate’ enrolments fell in all locations. ‘Postgraduate’ enrolments fell in all locations except Scotland where there was an increase between 2013/14 and 2014/15 (Figure 10).

**Figure 10 : Percentage change in Enrolments at UK HEIs by level of study and location of institution - 2013/14 to 2014/15**



NI and Scotland full-time enrolments increased by 2.1% (from 37,505 to 38,280) and 2.4% (from 170,800 to 174,840) respectively, while full-time enrolments in Wales and England fell by 2.3% (from 94,250 to 92,050) and 0.1% (from 1,393,475 to 1,391,975) respectively, over the same period (Table 14a).

The number of part-time enrolments fell in all locations; decreasing by 6.1% (from 481,545 to 452,120) in England, 3.8% (from 60,000 to 57,730) in Scotland, 4.6% (from 42,890 to 40,915) in Wales, and 3.8% (from 18,890 to 18,165) in NI (Table 14a).

**NOTES:**

1. The United Kingdom Statistics Authority has designated these statistics as National Statistics, in accordance with the Statistics and Registration Service Act 2007 and signifying compliance with the Code of Practice for Official Statistics. Designation can be broadly interpreted to mean that the statistics: meet identified user needs; are well explained and readily accessible; are produced according to sound methods, and are managed impartially and objectively in the public interest. Once statistics have been designated as National Statistics it is a statutory requirement that the Code of Practice shall continue to be observed.
2. The data presented in this bulletin are based on data supplied by the Higher Education Statistics Agency (HESA). HESA is the official agency for the collection of information on publicly funded Higher Education (HE) institutions in the UK. It was set up in 1993 following the White Paper 'Higher Education: a new framework', which called for more coherence in HE statistics. HE institutions include all publicly-funded universities. The HESA data presented in this bulletin relate to students at HE institutions in the UK and therefore do not include HE enrolments at FE colleges in NI or GB, or at institutions in the Republic of Ireland.
3. HESA release separate publications providing information on HE Student Enrolments and Qualifications obtained at HEIs for the whole of the UK. A notable difference in the HESA publications and those released by the Department for Employment and Learning (DEL) is that from 2014/15 HESA use revised data returns for the time series figures, whereas DEL does not. Consequently, historical figures for the number of enrolments and qualifications at UK HEIs published by DEL may differ from those in HESA's publications. Further information on this can be found in the introduction of HESA's Statistical First Release (SFR) 2014/15: <https://www.hesa.ac.uk/content/view/3771/#sfrFixedVersion>
4. **Change to HESA Methodology** - From 2013/14, HESA have changed the allocation of Open University (OU) students to England, Wales, Scotland and Northern Ireland. Previously all OU enrolments and qualifications were counted as being within England, where the OU has its administrative centre. HESA has decided from their 2013/14 release onwards that enrolments and qualifications registered at one of the OU's national centres in Wales, Scotland and Northern Ireland will contribute to the totals of those countries where statistics are shown by country of provider.

A full public consultation of NI users of Higher Education Statistics was undertaken in 2015 on this change to the method for allocating OU students, which showed full support for the change. This publication and future NI Higher Education publications will therefore use the new allocation method for OU, but will also present for this year relevant tables using the old methodology for OU allocation for comparison purposes.

5. A new specification of the Higher Education Statistics Agency (HESA) Standard Registration Population was introduced for 2007/08 enrolments and onwards. Writing up and sabbatical students are now excluded from this population where they were previously included in published enrolment data. In order to maintain time

series accuracy, all historical data will now use the 2007/08 definition of the Standard Registration Population (excluding writing up and sabbatical students.) As a result, enrolment data may not match other published HESA data prior to 2007/08.

The table below shows the change in figures when comparing the old and new definition of the HESA Standard Registration Population for enrolments at NI HEIs:

Year	Enrolments at NI HEIs		% Change
	Old Definition	New Definition	
2002/03	50,555	49,125	-2.8%
2003/04	52,405	51,025	-2.6%
2004/05	54,495	52,930	-2.9%
2005/06	54,625	52,845	-3.3%
2006/07	50,325	48,860	-2.9%

Figures have been rounded to the nearest 5.

6. The bulletin contains HESA data only (i.e. data on enrolments at UK HEIs only). Information on enrolments on HE courses at NI and GB FECs, Rol institutions and The College of Agriculture, Food and Rural Enterprise (CAFRE) are available via a separate statistical fact sheet which is published on the Department's website (<https://www.delni.gov.uk/articles/higher-education-enrolments>).
7. The 2008/09 HESA student record contained 270 students enrolled at a HE institution in NI whose domicile had been incorrectly recorded as 'Non EU'. The HE Institution later confirmed that the domicile for these students should have been NI. The error has been corrected for the data used in this bulletin, however, care must be taken when comparing 2008/09 data with data supplied by HESA. This error was not identified until after the HESA reporting deadline and therefore has not been corrected for HESA publications.
8. The 2006/07 HESA student record contained 955 students enrolled at a HE Institution in NI whose domicile had been recorded as unknown. The HE Institution later confirmed that the domicile for these students should have been NI. The error has been corrected for the data used in this bulletin, however, care must be taken when comparing 2006/07 data with data supplied by HESA. This error was not identified until after the HESA reporting deadline and therefore has not been corrected for HESA publications.
9. A change in reporting practice at a HE institution in NI has contributed to the large decrease that has been observed in the number of postgraduate students in 2006/07 compared to previous years. It means that the number of postgraduate students (or totals containing postgraduate figures) in 2006/07 cannot be compared accurately with data for previous years.
10. **Further statistics** on the Northern Ireland higher education sector, including qualification gained, graduate destinations and various higher education fact sheets can be downloaded from the Department's website: <http://www.delni.gov.uk/higher-education-stats>
11. **Guidance on the production of HE statistics** - Information on methods for collecting and analysing HE data, the quality of HE statistics, and links to the quality guidance used in managing the production of higher education statistics can be accessed on

our statistics guidance page - <https://www.delni.gov.uk/articles/quality-higher-education-statistics>

## 12. Uses made of HE statistics

This bulletin is disseminated directly to approximately 100 users. In addition, it is also published on the Department's website and a link to this is published on the UK National Statistics publication hub ([www.statistics.gov.uk/hub/index.html](http://www.statistics.gov.uk/hub/index.html)). Users include policy colleagues in DEL, academics, researchers, members of the public, the NI Assembly, other government departments and other interested parties and individuals.

The bulletin and further analysis of the data provide an evidence base that is used in a number of DEL policies, strategies and reviews. Some of the most recent examples are: -

- DEL's Higher Education Strategy
- DEL's Widening Participation Strategy

Further details on these strategies are available from the DEL website: <https://www.delni.gov.uk/articles/higher-education-strategies-northern-ireland>

In addition, HE data are used within other NI departments and their agencies. Some of the most recent examples are: -

- DFP - as a key indicator in the Education Domain of the Northern Ireland Multiple Deprivation Measure.
- DE – teacher demand model
- Invest NI – to quantify the supply of graduates for potential inward investment to NI

Almost 300 HE statistical enquiries per year are received by the Department from various sources. These include requests for further breakdowns of enrolments, qualifications and destinations data.

In addition, approximately 20 assembly questions (either written or oral), relating to HE data, are received by the Department each year.

## 13. Government Targets

Data from this bulletin are used in the measurement of the following key commitment as set in the Northern Ireland Executive's Programme for Government:

Programme for Government – 2011-15  
<http://www.northernireland.gov.uk/pfg-2011-2015-final-report.pdf>

“Increase uptake in economically relevant Science, Technology, Engineering and Mathematics (STEM) places (DEL).”

## **DEFINITIONS:**

### **Higher Education**

14. Higher education students for the purpose of HESA's data collection are those students on courses for which the level of instruction is above that of level 3 of the Qualifications and Curriculum Authority (QCA) National Qualifications Framework (NQF) (e.g. courses at the level of Certificate of HE and above).

### **Count of Students**

15. The HESA Student Record contains information about individual enrolments which, because a student can be enrolled on more than one programme of study, will exceed the number of students.

16. HESA data are a count of enrolments across the entire academic year as opposed to a snapshot of enrolments on the 1st December (which was the basis of the student count in HE statistical publications published by the Department prior to 2002/03).

### **Academic year**

17. The academic year runs from 1<sup>st</sup> August to 31<sup>st</sup> July.

### **First year students**

18. First year students are based on the HESA standard registration population who commenced their instance in the reporting period relevant to the data collection year. The term 'instance' is used to describe a student's engagement with the institution aiming towards the award of a qualification(s) or credit.

### **Domicile**

19. Domicile refers to a student's permanent place of residence prior to enrolment on an HE course.

20. Student enrolments recorded with domicile UK region unknown, Channel Islands and Isle of Man are included in the GB category for the purposes of this statistical bulletin.

### **Level of course**

21. Level of study

- I. *Postgraduate* programmes of study are those leading to higher degrees, diplomas and certificates (including Postgraduate Certificate of Education (PGCE) and professional qualifications) and usually require that entrants are already qualified to degree level (i.e. already qualified at level 6 of the QCA National Qualifications Framework).
- II. *First degree* includes first degrees with or without eligibility to register to practice with a health or social care or veterinary statutory regulatory body, first degrees with Qualified Teacher Status (QTS)/registration with a General

Teaching Council (GTC), enhanced first degrees, first degrees obtained concurrently with a diploma and intercalated first degrees.

- III. *Foundation degrees* were first introduced in September 2001. They are vocational higher education qualifications and are at level 5 of the QCA National Qualifications Framework.
- IV. *Other undergraduate* includes qualification aims equivalent to and below first degree level, such as Professional Graduate Certificate in Education (PGCE), foundation degrees, diplomas in HE with eligibility to register to practice with a Health or Social Care or veterinary statutory regulatory body, Higher National Diploma (HND), Higher National Certificate (HNC), Diploma of Higher Education (DipHE), Certificate of Higher Education (CertHE), foundation courses at HE level, NVQ/SVQ levels 4 and 5, post-degree diplomas and certificates at undergraduate level, professional qualifications at undergraduate level, other undergraduate diplomas and certificates including post registration health and social care courses, other formal HE qualifications of less than degree standard, institutional undergraduate credit and no formal undergraduate qualifications.

### **Mode of attendance**

22. Mode of attendance distinguishes students studying full-time or part-time:

- I. *Full-time* students are those normally required to attend an Institution for periods amounting to at least 24 weeks within the year of study, on thick or thin sandwich courses, and those on a study-related year out of their institution. During that time students are normally expected to undertake periods of study, tuition or work experience which amount to an average of at least 21 hours per week.
- II. *Part-time* students are those recorded as studying part-time, or studying full-time on courses lasting less than 24 weeks, on block release, or studying during the evenings only.

### **Age**

23. Age is as at 31<sup>st</sup> August within the relevant academic year.

### **Gender**

24. From 2007/08, the field 'gender' changed to be consistent with the Aligned Data Definitions adopted by the Information Standards Board for education, skills, and children's services. Students of 'indeterminate gender' are included in total figures but not in separate breakdowns.

### **STEM – Science, Technology, Engineering and Maths Enrolments**

25. Broad STEM includes the following subject areas: Medicine & Dentistry, Subjects allied to Medicine, Biological Sciences, Veterinary Sciences, Agriculture & related subjects, Physical Sciences, Mathematical Sciences, Computer Science, Engineering & Technology and Architecture, Building & Planning.

Narrow STEM is a subset of Broad STEM and includes the following subject areas: Biological Sciences, Physical Sciences, Mathematical Sciences, Computer Science, Engineering & Technology.

### **The Open University (OU)**

26. The Open University was previously defined as an English Institution (where it has its administrative centre). However, from this bulletin forward, where enrolments are broken down by country of institution, OU enrolments will be split between Northern Ireland, England, Scotland and Wales, depending on the location of the national centre.

### **Multiple Deprivation Measure (MDM)**

27. The analysis presented in section 1.4 utilises five groups (quintiles) of Super Output Areas (SOAs) across Northern Ireland. These five groups are determined based on level of deprivation using the Northern Ireland Multiple Deprivation Measure (NIMDM).

Super Output Areas ranked 1 to 178 are the most deprived quintile of SOAs relative to all other SOAs. Those ranked 713 to 890 are the most affluent relative to all other SOAs. Super Output Area (SOA) is determined using the postcode provided on the enrolment record.

The Northern Ireland Multiple Deprivation Measure (NIMDM) 2010 is a weighted combination of the seven domains of deprivation. The Income and Employment Deprivation domains account for nearly 50% of the multiple deprivation measure. The Health Deprivation and Disability Domain, and Education, Skills and Training Deprivation Domain account for a further 30% and the remainder is made up of the Proximity to Services, Living Environment and Crime & Disorder Domains.

For further details on deprivation measurement in Northern Ireland please follow this link:

[http://www.nisra.gov.uk/deprivation/nimdm\\_2010.htm](http://www.nisra.gov.uk/deprivation/nimdm_2010.htm)

**Media enquiries should be made to the Department's Press Office in Adelaide House, 39-49 Adelaide Street, Belfast, BT2 8FD, telephone (028) 9025 7793**



## Northern Ireland domiciled students enrolled at UK Higher Education Institutions

[Table 1](#) – Northern Ireland domiciled students enrolled at UK HEIs by level of study, mode of study and location of institution – 2005/06 to 2014/15.....Page 39

[Table 1a](#) – Northern Ireland domiciled students enrolled at UK HEIs by mode of study and location of institution – 2005/06 and 2014/15 (with %'s).....Page 40

[Table 1b](#) – Percentage change of Northern Ireland domiciled students enrolled at UK HEIs in each location by mode of study between 2005/06 and 2014/15.....Page 40

[Table 1c](#) – Percentage change of Northern Ireland domiciled students enrolled at UK HEIs by mode of study and level of study between 2005/06 and 2014/15.....Page 40

[Table 1d](#) – Percentage change of Northern Ireland domiciled students enrolled at UK HEIs by mode of study and location of institution between 2013/14 and 2014/15.....Page 41

[Table 1e](#) – Percentage change in Northern Ireland domiciled students enrolled at UK HEIs by mode of study between 2013/14 and 2014/15 (with %'s).....Page 41

[Table 1f](#) – Percentage change of Northern Ireland domiciled students enrolled at UK HEIs by mode of study and level of study between 2013/14 and 2014/15 (with %'s).....Page 41

[Table 2](#) – Northern Ireland domiciled first year students enrolled at UK HEIs by level of study, mode of study and location of institution – 2005/06 to 2014/15.....Page 42

[Table 2a](#) – Northern Ireland domiciled first year undergraduate students enrolled at UK HEIs by mode of study and location of institution - 2005/06 and 2014/15 (with %'s).....Page 43

[Table 2b](#) – Percentage change of Northern Ireland domiciled first year undergraduate students enrolled at UK HEIs in each location by mode of study between 2005/06 and 2014/15.....Page 43

[Table 2c](#) – Percentage change of Northern Ireland domiciled first year undergraduate students enrolled at UK HEIs in each location by mode of study between 2013/14 and 2014/15.....Page 43

[Table 3](#) – Northern Ireland domiciled students enrolled at UK HEIs by mode of study, level of study, location of institution and gender - 2014/15.....Page 44

[Table 3a](#) – Northern Ireland domiciled students enrolled at UK HEIs by mode of study and gender - 2005/06 and 2014/15 (with %'s).....Page 45

<a href="#">Table 3b</a> – Northern Ireland domiciled students enrolled at UK HEIs by gender and mode of study 2005/06 and 2014/15 (with %'s).....	Page 45
<a href="#">Table 3c</a> – Northern Ireland domiciled students enrolled at UK HEIs by gender and level of study – 2014/15 (with %'s).....	Page 45
<a href="#">Table 3d</a> – Northern Ireland domiciled students enrolled at UK HEIs by mode of study, gender and location of institution – 2014/15 (with %'s).....	Page 45
<a href="#">Table 4</a> – Northern Ireland domiciled students enrolled at UK HEIs by level of study, mode of study, gender and age – 2014/15.....	Page 46
<a href="#">Table 4a</a> – Northern Ireland domiciled students enrolled at UK HEIs by level of study and age group – 2014/15 (with %'s).....	Page 47
<a href="#">Table 4b</a> – Northern Ireland domiciled students enrolled at UK HEIs by age group, level and mode of study – 2014/15.....	Page 47
<a href="#">Table 4c</a> – Proportion of Northern Ireland domiciled students enrolled at UK HEIs by age group, level and mode of study – 2014/15.....	Page 47
<a href="#">Table 5</a> – Northern Ireland domiciled students enrolled at UK HEIs by year of study and gender – 2014/15 (a) by region of institution (b) by institution (top 20 only).....	Page 48
<a href="#">Table 6</a> – Northern Ireland domiciled students enrolled at UK Higher Education Institutions by mode of study, MDM quintile, level of study and gender – 2014/15.....	Page 49
<a href="#">Table 6a</a> – Northern Ireland domiciled students enrolled at UK Higher Education Institutions by mode of study and MDM quintile – 2014/15 (with %'s).....	Page 50
<a href="#">Table 7</a> – Northern Ireland domiciled students enrolled at UK HEIs by mode of study, gender and subject area – 2014/15.....	Page 51
<a href="#">Table 7a</a> – Northern Ireland domiciled students enrolled at UK HEIs by gender and STEM – 2014/15 (with %'s).....	Page 52
<a href="#">Table 7b</a> – Northern Ireland domiciled students enrolled at UK HEIs by mode of study and STEM – 2014/15 (with %'s).....	Page 52
<a href="#">Table 7c</a> – Northern Ireland domiciled students enrolled at UK HEIs by subject area and gender – 2014/15 (with %'s).....	Page 52

## Enrolments at Northern Ireland Higher Education Institutions

<a href="#">Table 8</a> – Enrolments at Northern Ireland HEIs by level of study, mode of study and domicile – 2005/06 to 2014/15.....	Page 53
<a href="#">Table 8a</a> – Enrolments at Northern Ireland HEIs by domicile – 2005/06 to 2014/15 (with %'s).....	Page 54

<a href="#">Table 8b</a> – Enrolments at Ulster University by domicile, level of study, mode of study and campus – 2014/15.....	Page 54
<a href="#">Table 8c</a> – Enrolments at Northern Ireland HEIs (not including UU Birmingham or London) by country of domicile (top 20) and institution – 2014/15.....	Page 55
<a href="#">Table 8d</a> – Enrolments at UU Birmingham and London by country of domicile (top 20) and institution – 2014/15.....	Page 55
<a href="#">Table 8e</a> – Percentage change of enrolments at Northern Ireland HEIs by domicile between 2005/06 and 2014/15.....	Page 55
<a href="#">Table 8f</a> – Percentage change of enrolments at Northern Ireland HEIs by domicile between 2013/14 and 2014/15.....	Page 55
<a href="#">Table 8g</a> – Percentage change of enrolments at Northern Ireland HEIs by level of study between 2005/06 and 2014/15.....	Page 56
<a href="#">Table 8h</a> – Percentage change of enrolments at Northern Ireland HEIs by mode of study between 2005/06 and 2014/15.....	Page 56
<a href="#">Table 8i</a> – Enrolments at Northern Ireland HEIs by mode of study – 2005/06 to 2014/15 (with %'s).....	Page 56
<a href="#">Table 8j</a> – Percentage change of enrolments at Northern Ireland HEIs by mode of study between 2013/14 and 2014/15.....	Page 56
<a href="#">Table 8k</a> – Enrolments at Northern Ireland HEIs by level of study – 2005/06 to 2014/15 (with %'s).....	Page 57
<a href="#">Table 8l</a> – Percentage change of enrolments at Northern Ireland HEIs by level of study between 2013/14 and 2014/15.....	Page 57
<a href="#">Table 9</a> – <u>First year</u> enrolments at Northern Ireland HEIs by level of study, mode of study and domicile – 2005/06 to 2014/15.....	Page 58
<a href="#">Table 9a</a> – <u>First year undergraduate</u> enrolments at Northern Ireland HEIs by mode of study – 2005/06 to 2014/15.....	Page 59
<a href="#">Table 9b</a> – Percentage change of <u>first year undergraduate</u> enrolments at Northern Ireland HEIs by mode of study between 2013/14 and 2014/15.....	Page 59
<a href="#">Table 10</a> – Enrolments at Northern Ireland HEIs by level of study, mode of study, gender, year of student and country of domicile – 2014/15.....	Page 60
<a href="#">Table 10a</a> – Enrolments at Northern Ireland HEIs by mode of study and gender – 2014/15 (with %'s).....	Page 61
<a href="#">Table 10b</a> – Enrolments at Northern Ireland HEIs by gender and mode of study – 2014/15 (with %'s).....	Page 61

<a href="#">Table 10c</a> – Enrolments at Northern Ireland HEIs by gender and level of study – 2014/15.....	Page 61
<a href="#">Table 10d</a> – Proportion of enrolments at Northern Ireland HEIs by gender and level of study – 2014/15.....	Page 61
<a href="#">Table 11</a> – Enrolments at Northern Ireland HEIs by level of study, age group, year of student, mode of study and gender – 2014/15.....	Page 62
<a href="#">Table 11a</a> – Enrolments at Northern Ireland HEIs by level of study and age group – 2014/15 (with %'s).....	Page 63
<a href="#">Table 11b</a> – Enrolments at Northern Ireland HEIs by age group by level of study – 2014/15 (with %'s).....	Page 63
<a href="#">Table 11c</a> – Enrolments at Northern Ireland HEIs by age group, mode of study and level of study – 2014/15.....	Page 63
<a href="#">Table 11d</a> – Proportion of enrolments at Northern Ireland HEIs in each mode and level of study by age group – 2014/15.....	Page 63
<a href="#">Table 12</a> – Enrolments at Northern Ireland HEIs by subject area, year of student, mode of study and gender – 2014/15.....	Page 64
<a href="#">Table 12a</a> – Enrolments at Northern Ireland HEIs by gender and STEM – 2014/15 (with %'s).....	Page 65
<a href="#">Table 12b</a> – Enrolments at Northern Ireland HEIs by mode of study and STEM – 2014/15 (with %'s).....	Page 65
<a href="#">Table 12c</a> – Enrolments at Northern Ireland HEIs by subject area and gender – 2014/15 (with %'s).....	Page 65
<a href="#">Table 13</a> – Enrolments at Northern Ireland HEIs by level of study, mode of study and institution – 2010/11 to 2014/15.....	Page 66
<a href="#">Table 13a</a> – Percentage change of enrolments at Northern Ireland HEIs in each level of study and institution between 2013/14 and 2014/15.....	Page 67
<a href="#">Table 13b</a> – Proportion of enrolments at Northern Ireland HEIs in each institution by mode of study – 2014/15.....	Page 67
<a href="#">Table 13c</a> – Percentage change of enrolments at UU Birmingham and London by mode of study between 2013/14 and 2014/15.....	Page 67
<a href="#">Table 13d</a> – Percentage change of enrolments at Northern Ireland HEIs (not including UU Birmingham or London) by mode of study between 2013/14 and 2014/15.....	Page 68
<a href="#">Table 13e</a> – Percentage change of enrolments at Northern Ireland HEIs in each institution by level of study between 2013/14 and 2014/15.....	Page 68

[Table 14](#) – (UK COMPARISON) All enrolments at UK HEIs by level of study, mode of study and location of institution – 2010/11 to 2014/15.....Page 69

[Table 14a](#) – Percentage change of enrolments at UK HEIs in each institution by mode of study between 2013/14 and 2014/15.....Page 70

## **ANNEX A: TABLES**

**Table 1: Northern Ireland domiciled students enrolled at UK HEIs by level of study, mode of study and location of institution - 2005/06 to 2014/15**

Mode and Year	First degree				Other undergraduate				Postgraduate				Total			
	Location of Institution				Location of Institution				Location of Institution				Location of Institution			
	NI	GB	OU <sup>(1)</sup>	Total	NI	GB	OU <sup>(1)</sup>	Total	NI	GB	OU <sup>(1)</sup>	Total	NI	GB	OU <sup>(1)</sup>	Total
<b>Full-time</b>																
2005/06	27,980	11,590	0	39,570	1,120	385	0	1,505	2,670	1,340	0	4,010	31,775	13,315	0	45,085
2006/07	27,285	11,855	0	39,145	1,035	355	0	1,390	2,275	1,280	0	3,555	30,595	13,490	0	44,085
2007/08	27,075	12,125	0	39,200	720	405	0	1,125	2,430	1,190	0	3,620	30,225	13,720	0	43,950
2008/09	27,505	12,235	0	39,740	230	375	0	605	3,030	1,135	0	4,165	30,765	13,745	0	44,510
2009/10	28,200	12,305	0	40,500	245	365	0	610	3,160	1,270	0	4,430	31,600	13,935	0	45,540
2010/11	28,230	12,585	0	40,815	230	370	0	600	3,555	1,300	0	4,860	32,015	14,255	0	46,270
2011/12	28,255	13,470	0	41,725	255	390	0	645	3,075	1,270	0	4,345	31,585	15,125	0	46,715
2012/13	28,100	13,270	0	41,370	250	230	0	480	2,850	1,090	0	3,940	31,200	14,590	0	45,790
2013/14	28,505	13,130	0	41,635	300	185	0	485	2,950	1,175	0	4,125	31,760	14,485	0	46,245
2014/15	29,065	12,795	0	41,860	270	150	0	420	2,980	1,170	0	4,150	32,310	14,115	0	46,430
<b>Part-time</b>																
2005/06	3,435	560	1,910	5,905	6,760	855	1,380	8,995	4,370	985	390	5,745	14,565	2,400	3,680	20,645
2006/07	2,985	580	1,840	5,405	5,645	935	1,525	8,105	3,775	1,255	395	5,425	12,405	2,765	3,760	18,930
2007/08	3,050	520	1,910	5,480	4,995	915	1,695	7,600	3,815	1,095	355	5,265	11,860	2,530	3,960	18,350
2008/09	2,560	505	2,130	5,190	4,685	955	1,785	7,420	3,695	1,140	305	5,140	10,940	2,595	4,220	17,755
2009/10	3,000	480	2,340	5,820	4,880	690	1,985	7,555	4,190	1,235	300	5,725	12,070	2,405	4,625	19,100
2010/11	2,860	425	2,595	5,885	5,085	825	1,995	7,905	4,000	1,220	270	5,490	11,945	2,470	4,865	19,280
2011/12	2,765	355	2,790	5,910	4,605	825	1,770	7,200	4,300	1,205	255	5,765	11,675	2,380	4,820	18,875
2012/13	2,880	280	3,000	6,160	5,020	605	1,195	6,825	4,280	1,095	250	5,625	12,180	1,980	4,445	18,610
2013/14	2,615	270	3,005	5,890	5,020	455	880	6,355	4,750	1,080	255	6,085	12,380	1,805	4,140	18,325
2014/15	2,325	280	3,065	5,665	5,110	390	560	6,060	4,550	1,085	175	5,810	11,985	1,755	3,800	17,535
<b>Total</b>																
2005/06	31,415	12,150	1,910	45,475	7,885	1,240	1,380	10,500	7,040	2,325	390	9,755	46,340	15,715	3,680	65,730
2006/07	30,275	12,435	1,840	44,545	6,680	1,290	1,525	9,490	6,045	2,535	395	8,980	43,000	16,260	3,760	63,015
2007/08	30,130	12,645	1,910	44,685	5,710	1,320	1,695	8,725	6,245	2,285	355	8,885	42,085	16,250	3,960	62,300
2008/09	30,060	12,740	2,130	44,930	4,915	1,325	1,785	8,025	6,725	2,275	305	9,310	41,700	16,345	4,220	62,265
2009/10	31,200	12,785	2,340	46,320	5,120	1,055	1,985	8,165	7,350	2,505	300	10,155	43,670	16,345	4,625	64,635
2010/11	31,090	13,010	2,595	46,695	5,310	1,200	1,995	8,505	7,555	2,520	270	10,350	43,960	16,730	4,865	65,555
2011/12	31,025	13,825	2,790	47,635	4,860	1,210	1,770	7,845	7,375	2,475	255	10,105	43,260	17,510	4,820	65,590
2012/13	30,980	13,550	3,000	47,535	5,270	835	1,195	7,300	7,130	2,185	250	9,565	43,380	16,570	4,445	64,400
2013/14	31,120	13,400	3,005	47,520	5,320	635	880	6,840	7,700	2,255	255	10,210	44,140	16,290	4,140	64,570
2014/15	31,390	13,075	3,065	47,525	5,380	540	560	6,480	7,525	2,255	175	9,955	44,295	15,870	3,800	63,965

Source : HESA

Notes

<sup>(1)</sup> Open University

To prevent the identification of individuals, figures in the attached table are rounded to the nearest 5, with 0, 1, 2 rounded to 0. Due to rounding, the sum of numbers in each row or column may not match the total shown.

**Table 1a: Northern Ireland domiciled students enrolled at UK HEIs by mode of study and location of institution - 2005/06 to 2014/15 (with %s)**

Mode and Year	Location of Institution							Total
	NI	NI %	GB	GB %	OU <sup>(1)</sup>	OU %		
Full-time	2005/06	31,775	70.5%	13,315	29.5%	0	0.0%	45,085
	2006/07	30,595	69.4%	13,490	30.6%	0	0.0%	44,085
	2007/08	30,225	68.8%	13,720	31.2%	0	0.0%	43,950
	2008/09	30,765	69.1%	13,745	30.9%	0	0.0%	44,510
	2009/10	31,600	69.4%	13,935	30.6%	0	0.0%	45,540
	2010/11	32,015	69.2%	14,255	30.8%	0	0.0%	46,270
	2011/12	31,585	67.6%	15,125	32.4%	0	0.0%	46,715
	2012/13	31,200	68.1%	14,590	31.9%	0	0.0%	45,790
	2013/14	31,760	68.7%	14,485	31.3%	0	0.0%	46,245
	2014/15	32,310	69.6%	14,115	30.4%	0	0.0%	46,430
Part-time	2005/06	14,565	70.5%	2,400	11.6%	3,680	17.8%	20,645
	2006/07	12,405	65.5%	2,765	14.6%	3,760	19.9%	18,930
	2007/08	11,860	64.6%	2,530	13.8%	3,960	21.6%	18,350
	2008/09	10,940	61.6%	2,595	14.6%	4,220	23.8%	17,755
	2009/10	12,070	63.2%	2,405	12.6%	4,625	24.2%	19,100
	2010/11	11,945	62.0%	2,470	12.8%	4,865	25.2%	19,280
	2011/12	11,675	61.8%	2,380	12.6%	4,820	25.5%	18,875
	2012/13	12,180	65.5%	1,980	10.7%	4,445	23.9%	18,610
	2013/14	12,380	67.6%	1,805	9.8%	4,140	22.6%	18,325
	2014/15	11,985	68.3%	1,755	10.0%	3,800	21.7%	17,535
Total	2005/06	46,340	70.5%	15,715	23.9%	3,680	5.6%	65,730
	2006/07	43,000	68.2%	16,260	25.8%	3,760	6.0%	63,015
	2007/08	42,085	67.6%	16,250	26.1%	3,960	6.4%	62,300
	2008/09	41,700	67.0%	16,345	26.2%	4,220	6.8%	62,265
	2009/10	43,670	67.6%	16,345	25.3%	4,625	7.2%	64,635
	2010/11	43,960	67.1%	16,730	25.5%	4,865	7.4%	65,555
	2011/12	43,260	66.0%	17,510	26.7%	4,820	7.3%	65,590
	2012/13	43,380	67.4%	16,570	25.7%	4,445	6.9%	64,400
	2013/14	44,140	68.4%	16,290	25.2%	4,140	6.4%	64,570
	2014/15	44,295	69.2%	15,870	24.8%	3,800	5.9%	63,965

Source : HESA

**Table 1b: Percentage change of Northern Ireland domiciled students enrolled at UK HEIs in each location by mode of study between 2005/06 and 2014/15**

Mode	Location of Institution			
	NI	GB	OU <sup>(1)</sup>	Total
Full-time	1.7%	6.0%	-	3.0%
Part-time	-17.7%	-26.9%	3.2%	-15.1%
Total	-4.4%	1.0%	3.3%	-2.7%

Source : HESA

**Table 1c: Percentage change of Northern Ireland domiciled students enrolled at UK HEIs by mode of study and level of study between 2005/06 and 2014/15**

Mode and Year	Level of Study				
	First Degree	Other Undergraduate	Postgraduate	Total	
Full-time	2005/06	39,570	1,505	4,010	45,085
	2014/15	41,860	420	4,150	46,430
	% change	5.8%	-72.1%	3.5%	3.0%
Part-time	2005/06	5,905	8,995	5,745	20,645
	2014/15	5,665	6,060	5,810	17,535
	% change	-4.0%	-32.6%	1.1%	-15.1%
Total	2005/06	45,475	10,500	9,755	65,730
	2014/15	47,525	6,480	9,955	63,965
	% change	4.5%	-38.3%	2.1%	-2.7%

Source : HESA

**Notes**

<sup>(1)</sup> Open University

To prevent the identification of individuals, figures in the attached table are rounded to the nearest 5, with 0, 1, 2 rounded to 0. Due to rounding, the sum of numbers in each row or column may not match the total shown.



**Table 1d: Percentage change of Northern Ireland domiciled students enrolled at UK HEIs by mode of study and location of institution between 2013/14 and 2014/15**

Mode and Year	Location of Institution				
	NI	GB	OU <sup>(1)</sup>	Total	
Full-time	2013/14	31,760	14,485	0	46,245
	2014/15	32,310	14,115	0	46,430
	% change	1.7%	-2.6%	0.0%	0.4%
Part-time	2013/14	12,380	1,805	4,140	18,325
	2014/15	11,985	1,755	3,800	17,535
	% change	-3.2%	-2.7%	-8.3%	-4.3%
Total	2013/14	44,140	16,290	4,140	64,570
	2014/15	44,295	15,870	3,800	63,965
	% change	0.4%	-2.6%	-8.3%	-0.9%

Source : HESA

**Table 1e: Percentage change in Northern Ireland domiciled students enrolled at UK HEIs by mode of study between 2013/14 and 2014/15 (with %s)**

Year	Mode of study				
	Full-time	Full-time %	Part-time	Part-time %	Total
2013/14	46,245	71.6%	18,325	28.4%	64,570
2014/15	46,430	72.6%	17,535	27.4%	63,965
% change	0.4%		-4.3%		-0.9%

Source : HESA

**Table 1f: Percentage change in Northern Ireland domiciled students enrolled at UK HEIs by mode of study and level of study between 2013/14 and 2014/15 (with %s)**

Mode and Year	Level of Study							
	First Degree	First Degree %	Other Undergraduate	Other Undergraduate %	Postgraduate	Postgraduate %	Total	
Full-time	2013/14	41,635	90.0%	485	1.0%	4,125	8.9%	46,245
	2014/15	41,860	90.2%	420	0.9%	4,150	8.9%	46,430
	% change	0.5%		-13.4%		0.5%		0.4%
Part-time	2013/14	5,890	32.1%	6,355	34.7%	6,085	33.2%	18,325
	2014/15	5,665	32.3%	6,060	34.6%	5,810	33.1%	17,535
	% change	-3.8%		-4.6%		-4.5%		-4.3%
Total	2013/14	47,520	73.6%	6,840	10.6%	10,210	15.8%	64,570
	2014/15	47,525	74.3%	6,480	10.1%	9,955	15.6%	63,965
	% change	0.0%		-5.2%		-2.5%		-0.9%

Source : HESA

**Notes**

<sup>(1)</sup> Open University

To prevent the identification of individuals, figures in the attached table are rounded to the nearest 5, with 0, 1, 2 rounded to 0. Due to rounding, the sum of numbers in each row or column may not match the total shown.

**Table 2: Northern Ireland domiciled first year students enrolled at UK HEIs by level of study, mode of study and location of institution - 2005/06 to 2014/15**

Level and Year	First degree				Other undergraduate				Postgraduate				Total			
	Location of Institution				Location of Institution				Location of Institution				Location of Institution			
	NI	GB	OU <sup>(1)</sup>	Total	NI	GB	OU <sup>(1)</sup>	Total	NI	GB	OU <sup>(1)</sup>	Total	NI	GB	OU <sup>(1)</sup>	Total
<b>Full-time</b>																
2005/06	9,515	3,855	0	13,370	490	195	0	685	1,595	1,050	0	2,645	11,600	5,105	0	16,705
2006/07	8,530	3,875	0	12,405	570	155	0	720	1,570	960	0	2,525	10,665	4,990	0	15,655
2007/08	9,100	3,985	0	13,085	330	235	0	565	1,555	845	0	2,395	10,985	5,065	0	16,050
2008/09	9,345	3,990	0	13,335	85	205	0	290	1,675	840	0	2,515	11,105	5,030	0	16,135
2009/10	9,750	3,960	0	13,710	165	200	0	370	1,950	980	0	2,930	11,865	5,140	0	17,010
2010/11	8,850	4,220	0	13,065	150	225	0	375	1,880	980	0	2,860	10,880	5,420	0	16,300
2011/12	8,820	4,800	0	13,620	135	210	0	345	1,840	930	0	2,775	10,800	5,940	0	16,740
2012/13	8,950	3,805	0	12,755	125	100	0	230	1,795	790	0	2,585	10,870	4,700	0	15,570
2013/14	9,620	4,080	0	13,700	120	115	0	235	1,905	905	0	2,810	11,640	5,100	0	16,740
2014/15	9,340	4,170	0	13,515	130	95	0	225	1,775	890	0	2,665	11,245	5,155	0	16,400
<b>Part-time</b>																
2005/06	860	155	660	1,675	5,500	600	980	7,080	1,930	410	165	2,505	8,290	1,165	1,805	11,260
2006/07	725	155	700	1,585	5,125	590	1,080	6,795	1,895	475	190	2,555	7,745	1,220	1,970	10,935
2007/08	685	100	675	1,460	4,455	610	1,130	6,195	1,995	535	140	2,670	7,130	1,250	1,950	10,330
2008/09	745	95	890	1,730	4,205	670	1,140	6,015	1,780	515	120	2,415	6,730	1,280	2,150	10,160
2009/10	740	85	955	1,775	4,275	525	1,240	6,040	2,055	620	125	2,800	7,065	1,230	2,320	10,615
2010/11	710	75	1,015	1,800	4,565	680	1,205	6,445	2,000	515	100	2,615	7,275	1,270	2,320	10,860
2011/12	705	70	1,020	1,795	4,175	665	1,090	5,930	2,130	505	90	2,725	7,010	1,245	2,200	10,450
2012/13	785	65	1,245	2,100	4,700	370	775	5,845	2,130	450	115	2,690	7,615	885	2,135	10,635
2013/14	595	50	920	1,570	4,775	355	545	5,675	2,475	475	105	3,060	7,850	880	1,575	10,305
2014/15	555	65	1,000	1,625	4,805	300	305	5,410	2,300	495	70	2,865	7,665	860	1,375	9,900
<b>Total</b>																
2005/06	10,375	4,010	660	15,045	5,990	795	980	7,770	3,525	1,460	165	5,150	19,890	6,270	1,805	27,965
2006/07	9,255	4,030	700	13,990	5,690	745	1,080	7,515	3,460	1,435	190	5,085	18,410	6,210	1,970	26,590
2007/08	9,785	4,085	675	14,550	4,785	845	1,130	6,760	3,550	1,380	140	5,070	18,115	6,310	1,950	26,375
2008/09	10,090	4,085	890	15,065	4,290	870	1,140	6,300	3,455	1,355	120	4,930	17,835	6,310	2,150	26,295
2009/10	10,490	4,045	955	15,490	4,440	725	1,240	6,405	4,000	1,600	125	5,730	18,930	6,370	2,320	27,625
2010/11	9,555	4,295	1,015	14,865	4,715	900	1,205	6,820	3,880	1,490	100	5,475	18,155	6,690	2,320	27,160
2011/12	9,525	4,870	1,020	15,415	4,310	880	1,090	6,275	3,970	1,440	90	5,500	17,805	7,185	2,200	27,190
2012/13	9,735	3,875	1,245	14,855	4,825	470	775	6,075	3,925	1,240	115	5,280	18,485	5,585	2,140	26,205
2013/14	10,215	4,130	920	15,265	4,895	470	545	5,905	4,380	1,380	105	5,870	19,490	5,980	1,575	27,045
2014/15	9,900	4,235	1,000	15,135	4,935	395	305	5,635	4,075	1,385	70	5,525	18,910	6,015	1,375	26,300

Source : HESA

**Notes**

<sup>(1)</sup> Open University

To prevent the identification of individuals, figures in the attached table are rounded to the nearest 5, with 0, 1, 2 rounded to 0. Due to rounding, the sum of numbers in each row or column may not match the total shown.

**Table 2a: Northern Ireland domiciled first year undergraduate students enrolled at UK HEIs by mode of study and location of institution - 2005/06 to 2014/15 (with %s)**

Mode and Year		Location of Institution						Total
		NI	NI %	GB	GB %	OU <sup>(1)</sup>	OU %	
Full-time	2005/06	10,005	71.2%	4,050	28.8%	0	0.0%	14,055
	2006/07	9,095	69.3%	4,030	30.7%	0	0.0%	13,125
	2007/08	9,430	69.1%	4,220	30.9%	0	0.0%	13,650
	2008/09	9,430	69.2%	4,190	30.8%	0	0.0%	13,620
	2009/10	9,915	70.4%	4,160	29.6%	0	0.0%	14,080
	2010/11	9,000	66.9%	4,445	33.1%	0	0.0%	13,440
	2011/12	8,960	64.1%	5,010	35.9%	0	0.0%	13,970
	2012/13	9,075	69.9%	3,910	30.1%	0	0.0%	12,985
	2013/14	9,740	69.9%	4,195	30.1%	0	0.0%	13,930
2014/15	9,470	69.0%	4,265	31.0%	0	0.0%	13,735	
Part-time	2005/06	6,360	72.6%	755	8.6%	1,640	18.7%	8,760
	2006/07	5,850	69.8%	745	8.9%	1,780	21.3%	8,380
	2007/08	5,135	67.1%	710	9.3%	1,810	23.6%	7,655
	2008/09	4,950	63.9%	765	9.9%	2,030	26.2%	7,745
	2009/10	5,010	64.1%	610	7.8%	2,195	28.1%	7,815
	2010/11	5,275	64.0%	755	9.1%	2,220	26.9%	8,245
	2011/12	4,880	63.2%	740	9.6%	2,110	27.3%	7,725
	2012/13	5,485	69.0%	435	5.5%	2,025	25.5%	7,945
	2013/14	5,370	74.2%	405	5.6%	1,465	20.2%	7,240
2014/15	5,365	76.2%	365	5.2%	1,305	18.5%	7,035	
Total	2005/06	16,365	71.7%	4,810	21.1%	1,640	7.2%	22,815
	2006/07	14,945	69.5%	4,775	22.2%	1,780	8.3%	21,505
	2007/08	14,570	68.4%	4,930	23.1%	1,810	8.5%	21,310
	2008/09	14,385	67.3%	4,955	23.2%	2,030	9.5%	21,365
	2009/10	14,930	68.2%	4,770	21.8%	2,195	10.0%	21,895
	2010/11	14,270	65.8%	5,195	24.0%	2,220	10.2%	21,685
	2011/12	13,835	63.8%	5,750	26.5%	2,110	9.7%	21,690
	2012/13	14,560	69.6%	4,345	20.8%	2,025	9.7%	20,930
	2013/14	15,110	71.4%	4,600	21.7%	1,465	6.9%	21,175
2014/15	14,835	71.4%	4,630	22.3%	1,305	6.3%	20,770	

Source : HESA

**Table 2b: Percentage change of Northern Ireland domiciled first year undergraduate students enrolled at UK HEIs in each location by mode of study between 2005/06 and 2014/15**

Mode	Location of Institution			
	NI	GB	OU <sup>(1)</sup>	Total
Full-time	-5.3%	5.3%	-	-2.3%
Part-time	-15.6%	-51.5%	-20.6%	-19.7%
Total	-9.3%	-3.7%	-20.6%	-9.0%

Source : HESA

**Table 2c: Percentage change of Northern Ireland domiciled first year undergraduate students enrolled at UK HEIs in each location by mode of study between 2013/14 and 2014/15**

Mode	Location of Institution			
	NI	GB	OU <sup>(1)</sup>	Total
Full-time	-2.7%	1.7%	-	-1.4%
Part-time	-0.1%	-9.2%	-11.1%	-2.9%
Total	-1.8%	0.7%	-11.1%	-1.9%

Source : HESA

**Notes**

<sup>(1)</sup> Open University

To prevent the identification of individuals, figures in the attached table are rounded to the nearest 5, with 0, 1, 2 rounded to 0. Due to rounding, the sum of numbers in each row or column may not match the total shown.

**Table 3: Northern Ireland domiciled students enrolled at UK HEIs by mode of study, level of study, location of institution and gender - 2014/15**

Level	Mode	Gender	First Year Students						All Students					
			Location of Institution						Location of Institution					
			NI	England	OU <sup>(1)</sup>	Scotland	Wales	Total	NI	England	OU <sup>(1)</sup>	Scotland	Wales	Total
First Degree	Full-time	Male	4,280	1,360	0	350	70	6,060	13,250	3,750	0	1,415	180	18,595
		Female	5,060	1,720	0	590	80	7,450	15,815	5,040	0	2,165	245	23,265
		Total	9,340	3,080	0	940	150	13,515	29,065	8,790	0	3,580	430	41,860
	Part-time	Male	245	30	450	5	0	725	1,130	120	1,410	40	5	2,705
		Female	310	25	550	10	0	895	1,195	85	1,650	30	0	2,965
		Total	555	50	1,000	10	0	1,625	2,325	205	3,065	70	5	5,665
	All First Degree	Male	4,525	1,390	450	355	70	6,790	14,380	3,865	1,410	1,455	185	21,295
		Female	5,375	1,740	550	600	80	8,345	17,010	5,125	1,650	2,195	245	26,230
		Total	9,900	3,135	1,000	955	150	15,135	31,390	8,995	3,065	3,650	435	47,525
Other Undergraduate	Full-time	Male	65	55	0	0	5	125	155	80	0	5	10	250
		Female	65	30	0	0	0	100	115	50	0	5	0	170
		Total	130	85	0	5	5	225	270	130	0	10	10	420
	Part-time	Male	1,750	140	150	15	5	2,060	1,860	190	280	15	10	2,350
		Female	3,055	120	155	20	0	3,350	3,250	150	280	25	5	3,710
		Total	4,805	260	305	35	10	5,410	5,110	340	560	40	15	6,060
	All Other Undergraduate	Male	1,815	195	150	15	10	2,185	2,015	270	280	20	20	2,605
		Female	3,125	150	155	25	0	3,450	3,365	195	280	30	5	3,880
		Total	4,935	345	305	40	15	5,635	5,380	465	560	50	25	6,480
All Undergraduate	Full-time	Male	4,345	1,420	0	350	75	6,185	13,400	3,830	0	1,420	190	18,845
		Female	5,130	1,750	0	595	80	7,550	15,930	5,090	0	2,170	245	23,435
		Total	9,470	3,165	0	945	155	13,735	29,335	8,920	0	3,590	440	42,280
	Part-time	Male	1,995	170	600	15	10	2,790	2,990	310	1,690	55	15	5,055
		Female	3,370	140	705	30	0	4,245	4,445	235	1,935	60	5	6,675
		Total	5,365	310	1,305	45	10	7,035	7,435	540	3,625	110	20	11,730
	All Undergraduate	Male	6,340	1,590	600	370	80	8,975	16,395	4,140	1,690	1,475	205	23,900
		Female	8,500	1,890	705	625	80	11,795	20,375	5,320	1,935	2,225	250	30,110
		Total	14,835	3,480	1,305	990	160	20,770	36,770	9,460	3,625	3,700	455	54,010
Postgraduate	Full-time	Male	755	285	0	70	15	1,125	1,325	410	0	100	20	1,850
		Female	1,015	440	0	65	20	1,535	1,655	525	0	90	25	2,295
		Total	1,775	720	0	135	35	2,665	2,980	935	0	190	45	4,150
	Part-time	Male	730	170	35	45	10	990	1,530	355	85	135	15	2,120
		Female	1,570	205	30	50	15	1,875	3,020	415	90	135	30	3,685
		Total	2,300	375	70	95	25	2,865	4,550	770	175	270	45	5,810
	All Postgraduate	Male	1,485	455	35	115	25	2,115	2,855	765	85	235	35	3,975
		Female	2,590	640	30	115	35	3,410	4,675	940	90	225	55	5,985
		Total	4,075	1,095	70	230	60	5,525	7,525	1,705	175	455	90	9,955
All Students	Full-time	Male	5,100	1,700	0	425	90	7,315	14,725	4,240	0	1,520	210	20,695
		Female	6,145	2,185	0	655	100	9,085	17,585	5,615	0	2,260	270	25,730
		Total	11,245	3,885	0	1,080	190	16,400	32,310	9,855	0	3,780	485	46,430
	Part-time	Male	2,725	340	635	60	15	3,780	4,520	665	1,775	190	30	7,175
		Female	4,940	345	735	80	15	6,120	7,465	645	2,025	190	35	10,360
		Total	7,665	685	1,375	140	30	9,900	11,985	1,310	3,800	380	65	17,535
	All Students	Male	7,825	2,040	635	480	105	11,090	19,245	4,905	1,775	1,705	240	27,875
		Female	11,085	2,530	735	740	115	15,205	25,050	6,265	2,025	2,450	305	36,090
		Total	18,910	4,575	1,375	1,220	220	26,300	44,295	11,165	3,800	4,160	545	63,965

Source : HESA

**Notes**

<sup>(1)</sup> Open University

To prevent the identification of individuals, figures in the attached table are rounded to the nearest 5, with 0, 1, 2 rounded to 0. Due to rounding, the sum of numbers in each row or column may not match the total shown.

**Table 3a: Northern Ireland domiciled students enrolled at UK HEIs by mode of study and gender - 2005/06 and 2014/15 (with %s)**

Mode and Year	Gender					
	Male	Male %	Female	Female %	Total	
Full-time	2005/06	18,915	42.0%	26,170	58.0%	45,085
	2014/15	20,695	44.6%	25,730	55.4%	46,430
Part-time	2005/06	7,795	37.8%	12,850	62.2%	20,645
	2014/15	7,175	40.9%	10,360	59.1%	17,535
Total	2005/06	26,715	40.6%	39,020	59.4%	65,730
	2014/15	27,875	43.6%	36,090	56.4%	63,965

Source : HESA

**Table 3b: Northern Ireland domiciled students enrolled at UK HEIs by gender and mode of study - 2005/06 and 2014/15 (with %s)**

Gender and Year	Mode of Study					
	Full-time	Full-time %	Part-time	Part-time %	Total	
Male	2005/06	18,915	70.8%	7,795	29.2%	26,715
	2014/15	20,695	74.3%	7,175	25.7%	27,875
Female	2005/06	26,170	67.1%	12,850	32.9%	39,020
	2014/15	25,730	71.3%	10,360	28.7%	36,090
Total	2005/06	45,085	68.6%	20,645	31.4%	65,730
	2014/15	46,430	72.6%	17,535	27.4%	63,965

Source : HESA

**Table 3c: Northern Ireland domiciled students enrolled at UK HEIs by gender and level of study - 2014/15 (with %s)**

Gender	Level of Study						
	First Degree	First Degree %	Other Undergraduate	Other Undergraduate %	Postgraduate	Postgraduate %	Total
Male	21,295	76.4%	2,605	9.3%	3,975	14.3%	27,875
Female	26,230	72.7%	3,880	10.7%	5,985	16.6%	36,090
Total	47,525	74.3%	6,480	10.1%	9,955	15.6%	63,965

Source : HESA

**Table 3d: Northern Ireland domiciled students enrolled at UK HEIs by mode of study, gender and location of institution - 2014/15 (with %s)**

Mode	Gender	Location of Institution						
		NI	NI %	GB	GB %	OU <sup>(1)</sup>	OU %	Total
Full-time	Male	14,725	71.2%	5,970	28.8%	0	0.0%	20,695
	Female	17,585	68.3%	8,145	31.7%	0	0.0%	25,730
	Total	32,310	69.6%	14,115	30.4%	0	0.0%	46,430
Part-time	Male	4,520	63.0%	885	12.3%	1,775	24.7%	7,175
	Female	7,465	72.0%	870	8.4%	2,025	19.5%	10,360
	Total	11,985	68.3%	1,755	10.0%	3,800	21.7%	17,535
All Students	Male	19,245	69.1%	6,850	24.6%	1,775	6.4%	27,875
	Female	25,050	69.4%	9,020	25.0%	2,025	5.6%	36,090
	Total	44,295	69.2%	15,870	24.8%	3,800	5.9%	63,965

Source : HESA

**Notes**

<sup>(1)</sup> Open University

To prevent the identification of individuals, figures in the attached table are rounded to the nearest 5, with 0, 1, 2 rounded to 0. Due to rounding, the sum of numbers in each row or column may not match the total shown.

**Table 4: Northern Ireland domiciled students enrolled at UK HEIs by level of study, mode of study, gender and age - 2014/15**

Level	Age	First Year Students									All Students								
		Full-time			Part-time			Full-time & Part-time			Full-time			Part-time			Full-time & Part-time		
		Male	Female	Total	Male	Female	Total	Male	Female	Total	Male	Female	Total	Male	Female	Total	Male	Female	Total
First Degree	Under 21	4,955	6,075	11,030	65	105	170	5,020	6,180	11,200	11,070	14,450	25,520	285	265	555	11,355	14,715	26,070
	21 - 24	765	750	1,515	155	185	340	920	935	1,855	6,330	6,880	13,210	595	600	1,200	6,930	7,480	14,410
	25 and over	340	625	965	510	605	1,115	850	1,230	2,080	1,195	1,940	3,135	1,820	2,095	3,915	3,015	4,035	7,045
	Unknown	0	0	0	0	0	0	0	0	0	0	0	0	0	0	0	0	0	0
	Total	6,060	7,450	13,515	725	895	1,625	6,790	8,345	15,135	18,595	23,265	41,860	2,705	2,965	5,665	21,295	26,230	47,525
Other Undergraduate	Under 21	80	65	150	280	205	485	360	270	630	140	105	245	285	230	520	425	340	765
	21 - 24	30	20	50	175	285	460	205	305	510	65	35	100	215	340	555	285	375	655
	25 and over	15	10	25	1,605	2,860	4,465	1,620	2,875	4,495	45	30	75	1,850	3,140	4,985	1,895	3,165	5,060
	Unknown	0	0	0	0	0	0	0	0	0	0	0	0	0	0	0	0	0	0
	Total	125	100	225	2,060	3,350	5,410	2,185	3,450	5,635	250	170	420	2,350	3,710	6,060	2,605	3,880	6,480
All Undergraduate	Under 21	5,040	6,140	11,180	345	310	655	5,380	6,450	11,835	11,205	14,555	25,765	575	500	1,075	11,780	15,055	26,835
	21 - 24	790	770	1,565	330	470	800	1,125	1,240	2,365	6,400	6,910	13,310	815	940	1,755	7,210	7,850	15,065
	25 and over	355	635	995	2,110	3,465	5,580	2,470	4,105	6,575	1,240	1,970	3,210	3,670	5,235	8,900	4,910	7,200	12,110
	Unknown	0	0	0	0	0	0	0	0	0	0	0	0	0	0	0	0	0	0
	Total	6,185	7,550	13,735	2,790	4,245	7,035	8,975	11,795	20,770	18,845	23,435	42,280	5,055	6,675	11,730	23,900	30,110	54,010
Postgraduate	Under 21	0	0	5	0	5	5	5	5	10	0	0	5	5	10	10	5	10	15
	21 - 24	740	1,040	1,775	140	260	400	880	1,300	2,180	1,080	1,365	2,445	205	375	585	1,285	1,740	3,025
	25 and over	385	500	885	850	1,605	2,455	1,235	2,105	3,340	770	930	1,700	1,910	3,300	5,210	2,685	4,230	6,915
	Unknown	0	0	0	0	0	0	0	0	0	0	0	0	0	0	0	0	0	0
	Total	1,125	1,535	2,665	990	1,875	2,865	2,115	3,410	5,525	1,850	2,295	4,150	2,120	3,685	5,810	3,975	5,985	9,955
All Students	Under 21	5,040	6,140	11,180	345	315	660	5,385	6,455	11,845	11,210	14,555	25,765	575	505	1,085	11,785	15,065	26,850
	21 - 24	1,530	1,810	3,340	470	730	1,205	2,000	2,540	4,545	7,475	8,275	15,755	1,020	1,320	2,340	8,495	9,595	18,090
	25 and over	745	1,135	1,880	2,960	5,075	8,035	3,705	6,210	9,910	2,010	2,900	4,910	5,580	8,535	14,115	7,590	11,430	19,025
	Unknown	0	0	0	0	0	0	0	0	0	0	0	0	0	0	0	0	0	0
	Total	7,315	9,085	16,400	3,780	6,120	9,900	11,090	15,205	26,300	20,695	25,730	46,430	7,175	10,360	17,535	27,875	36,090	63,965

Source : HESA

To prevent the identification of individuals, figures in the attached table are rounded to the nearest 5, with 0, 1, 2 rounded to 0. Due to rounding, the sum of numbers in each row or column may not match the total shown.

**Table 4a: Northern Ireland domiciled students enrolled at UK HEIs by level of study and age group - 2014/15 (with %s)**

Level	Age group								
	Under 21	Under 21 %	21 - 24	21-24 %	25 and over	25 and over %	Unknown	Unknown %	Total
First Degree	26,070	54.9%	14,410	30.3%	7,045	14.8%	0	0.0%	47,525
Other Undergraduate	765	11.8%	655	10.1%	5,060	78.1%	0	0.0%	6,480
All Undergraduate	26,835	49.7%	15,065	27.9%	12,110	22.4%	0	0.0%	54,010
Postgraduate	15	0.1%	3,025	30.4%	6,915	69.4%	0	0.0%	9,955
All Students	26,850	42.0%	18,090	28.3%	19,025	29.7%	0	0.0%	63,965

Source : HESA

**Table 4b: Northern Ireland domiciled students enrolled at UK HEIs by age group, level and mode of study - 2014/15**

Age	Level of study														
	First Degree			Other Undergraduate			All Undergraduate			Postgraduate			Total		
	Full-time	Part-time	Total	Full-time	Part-time	Total	Full-time	Part-time	Total	Full-time	Part-time	Total	Full-time	Part-time	Total
Under 21	25,520	555	26,070	245	520	765	25,765	1,075	26,835	5	10	15	25,765	1,085	26,850
21 - 24	13,210	1,200	14,410	100	555	655	13,310	1,755	15,065	2,445	585	3,025	15,755	2,340	18,090
25 and over	3,135	3,915	7,045	75	4,985	5,060	3,210	8,900	12,110	1,700	5,210	6,915	4,910	14,115	19,025
Unknown	0	0	0	0	0	0	0	0	0	0	0	0	0	0	0
Total	41,860	5,665	47,525	420	6,060	6,480	42,280	11,730	54,010	4,150	5,810	9,955	46,430	17,535	63,965

Source : HESA

**Table 4c: Proportion of Northern Ireland domiciled students enrolled at UK HEIs by age group, level and mode of study - 2014/15**

Age	Level of study														
	First Degree			Other Undergraduate			All Undergraduate			Postgraduate			Total		
	Full-time	Part-time	Total	Full-time	Part-time	Total	Full-time	Part-time	Total	Full-time	Part-time	Total	Full-time	Part-time	Total
Under 21	95.0%	2.1%	97.1%	0.9%	1.9%	2.8%	96.0%	4.0%	99.9%	0.0%	0.0%	0.1%	96.0%	4.0%	26.850
21 - 24	73.0%	6.6%	79.6%	0.6%	3.1%	3.6%	73.6%	9.7%	83.3%	13.5%	3.2%	16.7%	87.1%	12.9%	18,090
25 and over	16.5%	20.6%	37.0%	0.4%	26.2%	26.6%	16.9%	46.8%	63.7%	8.9%	27.4%	36.3%	25.8%	74.2%	19,025
Unknown	0.0%	0.0%	0.0%	0.0%	0.0%	0.0%	0.0%	0.0%	0.0%	0.0%	100.0%	100.0%	0.0%	100.0%	0
Total	65.4%	8.9%	74.3%	0.7%	9.5%	10.1%	66.1%	18.3%	84.4%	6.5%	9.1%	15.6%	72.6%	27.4%	63,965

Source : HESA

**Notes**

To prevent the identification of individuals, figures in the attached table are rounded to the nearest 5, with 0, 1, 2 rounded to 0. Due to rounding, the sum of numbers in each row or column may not match the total shown.

**Table 5: Northern Ireland domiciled students enrolled at UK HEIs by year of study and gender - 2014/15**

**(a) by region of Institution**

Region of Institution	First Year Students			All Students		
	Male	Female	Total	Male	Female	Total
Northern Ireland	7,825	11,085	18,910	19,245	25,050	44,295
Scotland	480	740	1,220	1,705	2,450	4,160
North West	695	1,005	1,695	1,600	2,425	4,025
North East	275	305	580	740	900	1,640
London	230	285	515	540	630	1,175
South East	210	200	410	450	455	905
South West	140	165	305	360	420	780
Yorkshire and The Humber	130	160	290	335	440	775
West Midlands	175	185	355	365	390	755
East Midlands	95	115	210	260	305	570
Wales	105	115	220	240	305	545
East of England	95	115	210	250	295	545
The Open University	635	735	1,375	1,775	2,025	3,800
<b>Total</b>	<b>11,090</b>	<b>15,205</b>	<b>26,300</b>	<b>27,875</b>	<b>36,090</b>	<b>63,965</b>

**(b) by Institution (top 20 only)**

Institution	First Year Students			All Students		
	Male	Female	Total	Male	Female	Total
Ulster University	3,995	4,915	8,910	9,795	11,740	21,535
Queen's University Belfast	3,635	5,510	9,145	8,855	11,250	20,100
The Open University	635	735	1,375	1,775	2,025	3,800
Stranmillis University College	90	430	520	280	1,240	1,525
Liverpool John Moores University	255	335	590	565	815	1,380
St Mary's University College	105	225	330	320	815	1,135
University of Northumbria at Newcastle	135	150	285	350	465	815
The University of Glasgow	70	115	185	315	430	745
The University of Dundee	75	130	205	265	475	740
Liverpool Hope University	75	140	210	160	340	500
University of Newcastle-upon-Tyne	65	75	135	210	260	470
The University of Edinburgh	65	80	145	205	235	445
The University of Liverpool	45	85	130	155	285	440
The University of Manchester	45	85	130	175	245	420
The Manchester Metropolitan University	75	80	155	175	230	405
Heriot-Watt University	60	45	105	185	155	340
The University of Stirling	25	60	85	110	175	285
Edinburgh Napier University	35	65	100	110	165	275
The University of Cambridge	40	40	80	125	120	250
The University of Aberdeen	25	30	50	110	115	230
All Others	1,545	1,875	3,420	3,640	4,495	8,135
<b>Total</b>	<b>11,090</b>	<b>15,205</b>	<b>26,300</b>	<b>27,875</b>	<b>36,090</b>	<b>63,965</b>

Source : HESA

To prevent the identification of individuals, figures in the attached table are rounded to the nearest 5, with 0, 1, 2 rounded to 0. Due to rounding, the sum of numbers in each row or column may not match the total shown.



**Table 6: Northern Ireland domiciled students enrolled at UK Higher Education Institutions by mode of study, mdm quintile, level of study and gender - 2014/15**

Multiple Deprivation Measure Decile 2010		Level of study											
		First degree			Other undergraduate			Postgraduate			Total		
		Male	Female	Total	Male	Female	Total	Male	Female	Total	Male	Female	Total
Full-time	Group 1 - Most deprived	2,260	3,130	5,390	35	25	60	195	260	455	2,485	3,415	5,905
	Group 2	3,200	4,195	7,395	50	25	75	275	345	620	3,525	4,565	8,095
	Group 3	3,980	5,035	9,015	55	50	105	345	490	835	4,385	5,575	9,955
	Group 4	4,395	5,405	9,795	65	40	100	445	550	995	4,900	5,995	10,895
	Group 5 - Least deprived	4,750	5,475	10,225	50	30	80	575	640	1,215	5,375	6,145	11,520
	Total	18,580	23,240	41,825	250	170	420	1,835	2,285	4,120	20,670	25,695	46,365
Part-time	Group 1 - Most deprived	480	580	1,060	375	490	865	220	370	590	1,075	1,440	2,515
	Group 2	500	640	1,140	315	525	840	310	595	910	1,125	1,765	2,890
	Group 3	535	600	1,130	415	650	1,065	400	795	1,195	1,350	2,045	3,390
	Group 4	580	585	1,165	430	735	1,165	495	850	1,340	1,500	2,170	3,670
	Group 5 - Least deprived	605	540	1,150	815	1,275	2,090	645	970	1,615	2,070	2,785	4,855
	Total	2,700	2,950	5,645	2,350	3,675	6,025	2,070	3,585	5,655	7,120	10,205	17,325
Total	Group 1 - Most deprived	2,740	3,710	6,450	410	515	925	415	630	1,045	3,560	4,860	8,420
	Group 2	3,700	4,840	8,540	365	550	915	590	940	1,530	4,650	6,330	10,980
	Group 3	4,515	5,635	10,145	470	695	1,170	745	1,285	2,035	5,730	7,620	13,350
	Group 4	4,970	5,990	10,960	490	775	1,270	940	1,400	2,340	6,400	8,165	14,565
	Group 5 - Least deprived	5,355	6,015	11,375	865	1,305	2,170	1,220	1,610	2,830	7,445	8,930	16,375
	Total	21,280	26,190	47,470	2,600	3,845	6,445	3,910	5,865	9,775	27,790	35,900	63,690

Source : HESA

To prevent the identification of individuals, figures in the attached table are rounded to the nearest 5, with 0, 1, 2 rounded to 0. Due to rounding, the sum of numbers in each row or column may not match the total shown.

Note: There were 274 cases where the postcode was unknown and therefore no MDM Quintile could be assigned.

**Table 6a: Northern Ireland domiciled students enrolled at UK Higher Education Institutions by mode of study and mdm quintile - 2014/15 (with %s)**

Mode of study	Multiple Deprivation Measure Decile 2010										
	Group 1 - Most deprived	Group 1 - Most deprived %	Group 2	Group 2 %	Group 3	Group 3 %	Group 4	Group 4 %	Group 5 - Least deprived	Group 5 - Least deprived %	Total
Full-time	5,905	12.7%	8,095	17.5%	9,955	21.5%	10,895	23.5%	11,520	24.8%	46,365
Part-time	2,515	14.5%	2,890	16.7%	3,390	19.6%	3,670	21.2%	4,855	28.0%	17,325
<b>Total</b>	<b>8,420</b>	<b>13.2%</b>	<b>10,980</b>	<b>17.2%</b>	<b>13,350</b>	<b>21.0%</b>	<b>14,565</b>	<b>22.9%</b>	<b>16,375</b>	<b>25.7%</b>	<b>63,690</b>

Source: Higher Education Statistics Agency (HESA)

To prevent the identification of individuals, figures in the attached table are rounded to the nearest 5, with 0, 1, 2 rounded to 0. Due to rounding, the sum of numbers in each row or column may not match the total shown.

Note: There were 274 cases where the postcode was unknown and therefore no MDM Quintile could be assigned.

**Table 7: Northern Ireland domiciled students enrolled at UK HEIs by mode of study, gender and subject area - 2014/15**

Subject Area	First Year Students									All Students								
	Full-time			Part-time			Full-time & Part-time			Full-time			Part-time			Full-time & Part-time		
	Male	Female	Total	Male	Female	Total	Male	Female	Total	Male	Female	Total	Male	Female	Total	Male	Female	Total
Medicine & dentistry	175	305	480	80	105	180	255	410	665	970	1,495	2,465	170	195	365	1,140	1,690	2,830
Subjects allied to medicine	370	1,695	2,065	185	1,125	1,315	560	2,820	3,375	1,165	5,090	6,255	360	1,705	2,065	1,520	6,800	8,320
Biological sciences	680	800	1,480	120	210	330	800	1,010	1,810	1,695	2,210	3,905	370	580	950	2,070	2,790	4,860
Veterinary science	10	20	30	0	5	5	10	25	40	45	95	140	5	5	10	50	100	150
Agriculture & related subjects	75	135	215	80	85	165	155	220	380	235	415	650	105	125	230	340	540	880
Physical sciences	355	265	615	60	25	85	410	290	700	1,045	770	1,815	185	105	290	1,230	875	2,105
Mathematical sciences	140	95	235	25	25	45	165	115	280	390	305	695	95	50	150	485	355	840
Computer science	1,085	345	1,430	170	40	210	1,255	385	1,640	2,965	965	3,930	545	105	650	3,510	1,070	4,580
Engineering & technology	855	185	1,040	150	35	185	1,000	220	1,225	2,790	600	3,390	430	80	510	3,220	680	3,895
Architecture, building & planning	340	120	460	85	65	150	420	190	610	985	375	1,360	210	115	325	1,195	490	1,685
Social studies	500	920	1,420	235	605	840	735	1,530	2,260	1,370	2,400	3,765	540	1,200	1,745	1,910	3,600	5,510
Law	280	525	805	70	80	150	350	605	955	765	1,320	2,085	215	265	480	980	1,585	2,565
Business & administrative studies	980	950	1,930	495	450	945	1,475	1,400	2,875	2,670	2,825	5,490	1,040	1,000	2,045	3,710	3,825	7,535
Mass communications and documentation	170	240	415	20	30	55	190	275	465	435	635	1,065	50	75	120	480	705	1,190
Languages	180	470	650	60	95	150	240	565	805	575	1,430	2,005	165	260	425	745	1,690	2,430
Historical and philosophical studies	285	235	515	60	45	105	340	280	620	745	665	1,410	215	170	390	965	835	1,795
Creative arts & design	460	715	1,175	35	35	70	495	750	1,245	1,170	1,880	3,055	125	95	220	1,295	1,980	3,275
Education	365	1,060	1,425	1,275	2,425	3,705	1,640	3,485	5,130	675	2,245	2,920	1,500	3,325	4,825	2,175	5,570	7,745
Combined	0	0	0	580	635	1,215	580	635	1,215	15	20	35	850	890	1,740	860	910	1,775
<b>Total</b>	<b>7,315</b>	<b>9,085</b>	<b>16,400</b>	<b>3,780</b>	<b>6,120</b>	<b>9,900</b>	<b>11,090</b>	<b>15,205</b>	<b>26,300</b>	<b>20,695</b>	<b>25,730</b>	<b>46,430</b>	<b>7,175</b>	<b>10,360</b>	<b>17,535</b>	<b>27,875</b>	<b>36,090</b>	<b>63,965</b>

Source : HESA

To prevent the identification of individuals, figures in the attached table are rounded to the nearest 5, with 0, 1, 2 rounded to 0. Due to rounding, the sum of numbers in each row or column may not match the total shown.

**Table 7a: Northern Ireland domiciled students enrolled at UK HEIs by gender and STEM - 2014/15 (with %s)**

Gender	STEM category				Total
	Broad STEM	Broad STEM %	Narrow STEM	Narrow STEM %	
Male	14,755	52.9%	10,515	37.7%	27,875
Female	15,390	42.6%	5,770	16.0%	36,090
<b>Total</b>	<b>30,145</b>	<b>47.1%</b>	<b>16,285</b>	<b>25.5%</b>	<b>63,965</b>

Source : HESA

**Table 7b: Northern Ireland domiciled students enrolled at UK HEIs by mode of study and STEM - 2014/15 (with %s)**

Mode	STEM category				Total
	Broad STEM	Broad STEM %	Narrow STEM	Narrow STEM %	
Full-time	24,600	53.0%	13,735	29.6%	46,430
Part-time	5,545	31.6%	2,550	14.5%	17,535
<b>Total</b>	<b>30,145</b>	<b>47.1%</b>	<b>16,285</b>	<b>25.5%</b>	<b>63,965</b>

Source : HESA

**Table 7c: Northern Ireland domiciled students enrolled at UK HEIs by subject area and gender - 2014/15 (with %s)**

Subject Area	All Students				Total
	Male	Male %	Female	Female %	
Subjects allied to medicine	1,520	18.3%	6,800	81.7%	8,320
Education	2,175	28.1%	5,570	71.9%	7,745
Business & administrative studies	3,710	49.2%	3,825	50.8%	7,535
Social studies	1,910	34.7%	3,600	65.3%	5,510
Biological sciences	2,070	42.6%	2,790	57.4%	4,860
Computer science	3,510	76.6%	1,070	23.4%	4,580
Engineering & technology	3,220	82.6%	680	17.4%	3,895
Creative arts & design	1,295	39.6%	1,980	60.4%	3,275
Medicine & dentistry	1,140	40.2%	1,690	59.8%	2,830
Law	980	38.2%	1,585	61.8%	2,565
Languages	745	30.6%	1,690	69.4%	2,430
Physical sciences	1,230	58.4%	875	41.6%	2,105
Historical and philosophical studies	965	53.6%	835	46.4%	1,795
Combined	860	48.6%	910	51.4%	1,775
Architecture, building & planning	1,195	70.9%	490	29.1%	1,685
Mass communications and documentation	480	40.6%	705	59.5%	1,190
Agriculture & related subjects	340	38.4%	540	61.6%	880
Mathematical sciences	485	57.8%	355	42.2%	840
Veterinary science	50	32.4%	100	67.6%	150
<b>Total</b>	<b>27,875</b>	<b>43.6%</b>	<b>36,090</b>	<b>56.4%</b>	<b>63,965</b>

Source : HESA

Notes

To prevent the identification of individuals, figures in the attached table are rounded to the nearest 5, with 0, 1, 2 rounded to 0. Due to rounding, the sum of numbers in each row or column may not match the total shown.

Table 8: Enrolments at Northern Ireland HEIs including OU by level of study, mode of study and domicile - 2005/06 to 2014/15

Mode and Year	First Degree						Other Undergraduate						Postgraduate						Total					
	Country of domicile						Country of domicile						Country of domicile						Country of domicile					
	NI	GB	Rol	Other EU	Non EU	Total	NI	GB	Rol	Other EU	Non EU	Total	NI	GB	Rol	Other EU	Non EU	Total	NI	GB	Rol	Other EU	Non EU	Total
<b>Full-time</b>																								
2005/06	27,980	290	1,655	55	470	30,455	1,120	0	40	35	35	1,235	2,670	85	480	140	615	3,990	31,775	380	2,170	230	1,125	35,675
2006/07	27,225	365	1,395	105	495	29,585	1,035	5	20	25	50	1,135	2,275	80	340	150	545	3,390	30,535	450	1,755	285	1,090	34,110
2007/08	27,075	365	1,190	95	435	29,155	720	5	20	30	20	795	2,430	125	415	185	635	3,790	30,225	500	1,625	305	1,085	33,740
2008/09	27,505	445	1,045	90	400	29,485	230	0	10	5	70	320	3,030	165	550	200	800	4,745	30,765	615	1,605	295	1,270	34,545
2009/10	28,200	520	950	95	415	30,180	245	0	15	25	55	335	3,160	140	715	175	815	5,005	31,600	665	1,675	295	1,285	35,520
2010/11	28,230	620	1,015	90	485	30,440	230	0	5	0	155	390	3,555	160	895	170	910	5,690	32,015	780	1,915	265	1,550	36,520
2011/12	28,255	710	950	90	1,370	31,375	255	0	5	5	175	445	3,075	130	700	145	1,115	5,165	31,585	840	1,655	235	2,665	36,985
2012/13	28,100	760	935	95	1,535	31,435	250	5	5	5	265	525	2,850	135	545	140	1,220	4,885	31,200	900	1,485	240	3,025	36,845
2013/14	28,505	855	860	115	1,495	31,825	300	10	0	10	360	680	2,950	190	495	150	1,215	5,000	31,760	1,050	1,355	270	3,070	37,505
2014/15	29,065	1,430	865	180	1,290	32,835	270	5	5	5	325	610	2,980	225	445	145	1,040	4,830	32,310	1,665	1,315	335	2,655	38,280
<b>Part-time</b>																								
2005/06	5,345	15	300	5	15	5,675	8,140	65	315	30	25	8,570	4,760	610	915	100	215	6,600	18,245	690	1,530	130	255	20,845
2006/07	4,825	20	270	5	20	5,135	6,275	900	240	15	95	7,525	4,170	500	900	100	175	5,845	15,270	1,415	1,410	115	290	18,505
2007/08	4,955	25	275	5	20	5,280	6,685	25	395	15	10	7,130	4,170	540	995	105	190	6,000	15,815	590	1,665	125	220	18,410
2008/09	4,685	30	215	5	35	4,970	6,465	165	375	30	60	7,095	3,995	495	1,045	115	185	5,835	15,145	690	1,635	150	280	17,905
2009/10	5,335	30	235	5	15	5,620	6,865	330	745	5	95	8,040	4,485	485	1,140	105	210	6,425	16,680	845	2,125	115	320	20,080
2010/11	5,455	40	200	5	10	5,715	7,075	120	1,230	20	280	8,730	4,270	500	940	80	105	5,895	16,805	660	2,370	105	395	20,335
2011/12	5,555	40	190	5	15	5,810	6,375	95	875	60	200	7,605	4,555	845	800	50	65	6,320	16,490	980	1,870	115	285	19,740
2012/13	5,880	50	175	5	20	6,130	6,220	110	455	55	50	6,885	4,525	935	720	45	70	6,295	16,620	1,095	1,350	105	140	19,310
2013/14	5,620	80	155	5	25	5,885	5,900	115	190	10	20	6,230	5,000	925	720	45	85	6,775	16,520	1,115	1,065	60	130	18,890
2014/15	5,385	70	120	10	30	5,615	5,670	165	195	5	50	6,085	4,725	925	715	40	60	6,465	15,780	1,165	1,030	55	140	18,165
<b>Total</b>																								
2005/06	33,325	305	1,955	55	485	36,130	9,260	70	350	60	60	9,805	7,430	695	1,395	240	830	10,590	50,015	1,070	3,700	360	1,380	56,525
2006/07	32,050	385	1,665	110	515	34,720	7,310	905	260	40	145	8,660	6,440	580	1,240	255	720	9,235	45,805	1,865	3,165	400	1,380	52,615
2007/08	32,030	390	1,465	95	455	34,435	7,405	30	420	45	30	7,925	6,605	665	1,410	290	825	9,795	46,040	1,085	3,290	430	1,310	52,155
2008/09	32,190	475	1,265	95	435	34,455	6,695	170	385	35	135	7,415	7,025	660	1,595	315	985	10,580	45,910	1,305	3,240	445	1,550	52,450
2009/10	33,535	550	1,185	100	430	35,800	7,105	330	760	30	150	8,375	7,645	625	1,855	280	1,025	11,425	48,285	1,510	3,800	410	1,605	55,600
2010/11	33,685	665	1,215	95	495	36,155	7,305	120	1,235	20	440	9,120	7,825	660	1,835	250	1,010	11,585	48,820	1,445	4,285	370	1,945	56,860
2011/12	33,815	750	1,140	95	1,390	37,185	6,630	95	885	65	375	8,050	7,630	980	1,500	195	1,185	11,485	48,075	1,825	3,520	355	2,950	56,720
2012/13	33,980	815	1,115	100	1,555	37,565	6,465	110	460	60	315	7,415	7,375	1,075	1,260	180	1,290	11,180	47,820	2,000	2,835	340	3,160	56,155
2013/14	34,125	935	1,010	120	1,520	37,710	6,200	120	190	15	380	6,915	7,950	1,110	1,215	195	1,300	11,775	48,275	2,170	2,420	330	3,200	56,395
2014/15	34,450	1,505	985	190	1,320	38,450	5,940	175	200	10	375	6,695	7,700	1,150	1,160	185	1,100	11,295	48,090	2,825	2,345	385	2,795	56,445

Source : HESA

To prevent the identification of individuals, figures in the attached table are rounded to the nearest 5, with 0, 1, 2 rounded to 0. Due to rounding, the sum of numbers in each row or column may not match the total shown.

Table 8a: Enrolments at Northern Ireland HEIs by domicile - 2005/06 to 2014/15 (with %s)

Year	Domicile										
	NI	NI %	GB	GB %	ROI	ROI %	Other EU	Other EU %	Non EU	Non EU %	Total
2005/06	50,015	88.5%	1,070	1.9%	3,700	6.5%	360	0.6%	1,380	2.4%	56,525
2006/07	45,805	87.1%	1,865	3.5%	3,165	6.0%	400	0.8%	1,380	2.6%	52,615
2007/08	46,040	88.3%	1,085	2.1%	3,290	6.3%	430	0.8%	1,310	2.5%	52,155
2008/09	45,910	87.5%	1,305	2.5%	3,240	6.2%	445	0.8%	1,550	3.0%	52,450
2009/10	48,285	86.8%	1,510	2.7%	3,800	6.8%	410	0.7%	1,605	2.9%	55,600
2010/11	48,820	85.9%	1,445	2.5%	4,285	7.5%	370	0.6%	1,945	3.4%	56,860
2011/12	48,075	84.8%	1,825	3.2%	3,520	6.2%	355	0.6%	2,950	5.2%	56,720
2012/13	47,820	85.2%	2,000	3.6%	2,835	5.1%	340	0.6%	3,160	5.6%	56,155
2013/14	48,275	85.6%	2,170	3.8%	2,420	4.3%	330	0.6%	3,200	5.7%	56,395
2014/15	48,090	85.2%	2,825	5.0%	2,345	4.2%	385	0.7%	2,795	5.0%	56,445

Source : HESA

Table 8b: Enrolments at Ulster University by domicile, level of study, mode of study and campus - 2014/15

Domicile	Level	Mode of study																		
		Full-time							Part-time					Total						
		Ulster University							Ulster University					Ulster University						
		Belfast	Coleraine	Birmingham	Jordanstown	London	Magee	Total	Belfast	Coleraine	Jordanstown	Magee	Total	Belfast	Coleraine	Birmingham	Jordanstown	London	Magee	Total
NI	Undergraduate	1,415	3,420	0	6,910	0	2,915	14,660	210	320	2,275	570	3,375	1,620	3,745	0	9,185	570	3,490	18,040
	Postgraduate	65	440	0	550	0	150	1,200	35	225	1,820	220	2,295	100	665	0	2,370	0	365	3,495
	Total	1,480	3,860	0	7,460	0	3,065	15,865	245	545	4,095	790	5,670	1,720	4,405	0	11,555	0	3,855	21,535
GB	Undergraduate	15	40	130	35	455	10	690	5	90	95	0	190	20	135	130	130	455	15	880
	Postgraduate	5	25	0	15	5	10	60	0	205	485	25	720	10	230	0	500	5	35	780
	Total	25	65	130	50	460	20	750	5	300	580	30	915	30	365	130	630	460	50	1,660
ROI	Undergraduate	45	190	0	130	0	245	615	0	15	145	80	245	50	205	0	280	0	330	860
	Postgraduate	20	65	0	95	0	50	230	5	40	330	80	455	25	100	0	420	0	135	685
	Total	65	255	0	225	0	300	845	5	50	475	160	695	75	305	0	700	0	460	1,540
Other EU	Undergraduate	5	10	0	65	55	5	135	0	0	5	0	10	10	10	0	70	55	5	145
	Postgraduate	0	10	0	15	5	5	35	0	0	15	0	20	0	10	0	30	5	5	55
	Total	10	20	0	80	55	10	170	0	5	20	0	30	10	20	0	100	55	10	200
Other Overseas	Undergraduate	20	65	90	110	300	30	615	5	0	5	25	35	25	65	90	115	300	50	645
	Postgraduate	25	45	80	95	210	20	475	0	0	20	0	20	25	45	80	115	210	20	500
	Total	45	110	170	205	515	50	1,090	5	0	25	25	55	55	110	170	225	515	70	1,145
Total	Undergraduate	1,500	3,730	225	7,250	810	3,205	16,720	225	425	2,525	675	3,855	1,720	4,155	225	9,775	810	3,885	20,570
	Postgraduate	120	580	80	770	220	235	2,000	40	470	2,670	330	3,510	160	1,050	80	3,435	220	565	5,510
	Total	1,620	4,310	300	8,020	1,025	3,440	18,720	265	900	5,195	1,005	7,365	1,885	5,205	300	13,215	1,025	4,445	26,085

Source : HESA

Notes

To prevent the identification of individuals, figures in the attached table are rounded to the nearest 5, with 0, 1, 2 rounded to 0. Due to rounding, the sum of numbers in each row or column may not match the total shown.

**Table 8c: Enrolments from outside the UK and ROI at Northern Ireland HEIs (not including UU Birmingham or London) by country of domicile (top 20) and institution - 2014/15**

Country	Institution				Total
	QUB	UU	Stranmillis	St Mary's	
China	560	145	0	0	705
Malaysia	340	5	0	0	345
United States	100	85	0	0	185
Hong Kong (Special Administrative Region)	95	40	0	0	135
Germany	35	70	0	0	105
India	40	35	0	0	75
Canada	35	20	0	0	60
Nigeria	35	15	0	0	50
Brazil	5	40	0	0	40
Singapore	40	0	0	0	40
Saudi Arabia	30	10	0	0	40
Brunei [Brunei Darussalam]	35	0	0	0	35
Pakistan	30	5	0	0	35
Vietnam [Viet Nam]	30	5	0	0	30
Greece	20	10	0	0	30
Spain (includes Ceuta, Melilla)	20	10	0	0	30
France (includes Corsica)	20	5	0	0	25
Italy (Includes Sardinia, Sicily)	20	5	0	0	25
United Arab Emirates	25	0	0	0	25
Jordan	20	5	0	0	20
<b>Total</b>	<b>1835</b>	<b>605</b>	<b>0</b>	<b>0</b>	<b>2445</b>

Source : HESA

**Table 8d: Non EU Enrolments at UU Birmingham and London by country of domicile (top 20) and institution - 2014/15**

Country	Ulster University		Total
	Birmingham	London	
China	80	110	190
Bangladesh	5	90	90
Colombia	5	50	55
Sri Lanka	5	45	50
Pakistan	15	30	45
Romania	0	40	40
India	10	25	35
Nepal	0	30	30
Cameroon	20	10	30
Vietnam [Viet Nam]	10	15	25
Nigeria	5	15	20
Morocco	5	10	15
Mauritius	0	10	10
Saudi Arabia	0	10	10
Senegal	0	5	10
Albania	0	5	5
Ghana	0	5	5
Ukraine	0	5	5
Egypt	0	5	5
Taiwan [Taiwan, Province of China]	0	5	5
<b>Total</b>	<b>170</b>	<b>570</b>	<b>740</b>

Source : HESA

**Table 8e: Percentage change of enrolments at Northern Ireland HEIs by domicile between 2005/06 and 2014/15**

Year	Country of domicile					Total
	NI	GB	ROI	Other EU	Non EU	
2005/06	50,015	1,070	3,700	360	1,380	56,525
2014/15	48,090	2,825	2,345	385	2,795	56,445
% change	-3.8%	163.9%	-36.6%	8.1%	102.8%	-0.1%

Source : HESA

**Table 8f: Percentage change of enrolments at Northern Ireland HEIs by domicile between 2013/14 and 2014/15**

Year	Country of domicile					Total
	NI	GB	ROI	Other EU	Non EU	
2013/14	48,275	2,170	2,420	330	3,200	56,395
2014/15	48,090	2,825	2,345	385	2,795	56,445
% change	-0.4%	30.3%	-3.0%	16.6%	-12.7%	0.1%

Source : HESA

**Notes**

To prevent the identification of individuals, figures in the attached table are rounded to the nearest 5, with 0, 1, 2 rounded to 0. Due to rounding, the sum of numbers in each row or column may not match the total shown.

**Table 8g: Percentage change of enrolments at Northern Ireland HEIs by level of study between 2005/06 and 2014/15**

Year	Level of study			
	First Degree	Other Undergraduate	Postgraduate	Total
2005/06	36,130	9,805	10,590	56,525
2014/15	38,450	6,695	11,295	56,445
% change	6.4%	-31.7%	6.7%	-0.1%

Source : HESA

**Table 8h: Percentage change of enrolments at Northern Ireland HEIs by mode of study between 2005/06 and 2014/15**

Year	Mode of study		
	Full-time	Part-time	Total
2005/06	35,675	20,845	56,525
2014/15	38,280	18,165	56,445
% change	7.3%	-12.9%	-0.1%

Source : HESA

**Table 8i: Enrolments at Northern Ireland HEIs by mode of study - 2005/06 to 2014/15 (with %s)**

Year	Mode of Study				
	Full-time	Full-time %	Part-time	Part-time %	Total
2005/06	35,675	63.1%	20,845	36.9%	56,525
2006/07	34,110	64.8%	18,505	35.2%	52,615
2007/08	33,740	64.7%	18,410	35.3%	52,155
2008/09	34,545	65.9%	17,905	34.1%	52,450
2009/10	35,520	63.9%	20,080	36.1%	55,600
2010/11	36,520	64.2%	20,335	35.8%	56,860
2011/12	36,985	65.2%	19,740	34.8%	56,720
2012/13	36,845	65.6%	19,310	34.4%	56,155
2013/14	37,505	66.5%	18,890	33.5%	56,395
2014/15	38,280	67.8%	18,165	32.2%	56,445

Source : HESA

**Table 8j: Percentage change of enrolments at Northern Ireland HEIs by mode of study between 2013/14 and 2014/15**

Year	Mode of Study		
	Full-time	Part-time	Total
2013/14	37,505	18,890	56,395
2014/15	38,280	18,165	56,445
% change	2.1%	-3.8%	0.1%

Source : HESA

Notes

To prevent the identification of individuals, figures in the attached table are rounded to the nearest 5, with 0, 1, 2 rounded to 0. Due to rounding, the sum of numbers in each row or column may not match the total shown.



**Table 8k: Enrolments at Northern Ireland HEIs by level of study - 2005/06 to 2014/15 (with %'s)**

Year	Level of study						
	First Degree	First Degree %	Other Undergraduate	Other Undergraduate %	Postgraduate	Postgraduate %	Total
2005/06	36,130	63.9%	9,805	17.3%	10,590	18.7%	56,525
2006/07	34,720	66.0%	8,660	16.5%	9,235	17.5%	52,615
2007/08	34,435	66.0%	7,925	15.2%	9,795	18.8%	52,155
2008/09	34,455	65.7%	7,415	14.1%	10,580	20.2%	52,450
2009/10	35,800	64.4%	8,375	15.1%	11,425	20.6%	55,600
2010/11	36,155	63.6%	9,120	16.0%	11,585	20.4%	56,860
2011/12	37,185	65.6%	8,050	14.2%	11,485	20.2%	56,720
2012/13	37,565	66.9%	7,415	13.2%	11,180	19.9%	56,155
2013/14	37,710	66.9%	6,915	12.3%	11,775	20.9%	56,395
2014/15	38,450	68.1%	6,695	11.9%	11,295	20.0%	56,445

Source : HESA

**Table 8l: Percentage change of enrolments at Northern Ireland HEIs by level of study between 2013/14 and 2014/15**

Year	Level of study			
	First Degree	Other Undergraduate	Postgraduate	Total
2013/14	37,710	6,915	11,775	56,395
2014/15	38,450	6,695	11,295	56,445
% change	2.0%	-3.1%	-4.1%	0.1%

Source : HESA

**Notes**

To prevent the identification of individuals, figures in the attached table are rounded to the nearest 5, with 0, 1, 2 rounded to 0. Due to rounding, the sum of numbers in each row or column may not match the total shown.

Table 9: First year enrolments at Northern Ireland HEIs including OU by level of study, mode of study and domicile - 2005/06 to 2014/15

Mode and Year	First Degree						Other Undergraduate						Postgraduate						Total						
	Country of domicile						Country of domicile						Country of domicile						Country of domicile						
	NI	GB	Rol	Other EU	Non EU	Total	NI	GB	Rol	Other EU	Non EU	Total	NI	GB	Rol	Other EU	Non EU	Total	NI	GB	Rol	Other EU	Non EU	Total	
<b>Full-time</b>																									
2005/06	9,515	105	570	25	170	10,385	490	0	15	35	35	575	1,595	40	270	75	350	2,330	11,600	145	855	130	550	13,290	
2006/07	8,470	150	310	50	220	9,205	565	0	5	25	45	650	1,570	40	245	95	325	2,270	10,605	195	560	175	590	12,125	
2007/08	9,100	130	335	40	185	9,790	330	5	15	30	20	395	1,555	75	285	85	325	2,325	10,985	210	635	150	525	12,510	
2008/09	9,345	200	295	45	190	10,075	85	0	10	5	70	170	1,675	70	270	80	410	2,505	11,105	270	570	130	670	12,750	
2009/10	9,750	205	340	40	190	10,525	165	0	10	25	50	255	1,950	65	515	70	410	3,010	11,865	270	865	135	655	13,785	
2010/11	8,850	225	355	35	220	9,680	150	0	0	0	155	310	1,880	70	475	70	390	2,890	10,880	290	830	110	765	12,880	
2011/12	8,820	280	255	40	1,090	10,485	135	0	5	5	170	315	1,840	70	425	70	770	3,180	10,800	350	685	120	2,030	13,980	
2012/13	8,950	265	295	40	700	10,245	125	5	0	5	265	400	1,795	70	270	65	785	2,985	10,870	340	565	110	1,745	13,630	
2013/14	9,620	280	250	50	455	10,655	120	5	0	10	355	490	1,905	115	310	80	615	3,020	11,640	400	565	135	1,425	14,165	
2014/15	9,340	830	295	120	445	11,030	130	5	0	5	320	460	1,775	115	250	75	555	2,765	11,245	950	540	195	1,320	14,255	
<b>Part-time</b>																									
2005/06	1,520	5	70	0	5	1,600	6,480	60	235	25	20	6,820	2,095	215	385	35	90	2,820	10,095	280	690	60	115	11,240	
2006/07	1,430	10	90	0	5	1,535	5,310	900	215	15	95	6,535	2,080	250	440	45	75	2,895	8,825	1,160	745	55	175	10,965	
2007/08	1,360	5	80	0	0	1,450	5,585	25	345	15	10	5,980	2,135	260	490	45	55	2,980	9,080	290	915	60	65	10,410	
2008/09	1,635	5	60	5	10	1,715	5,345	160	270	30	60	5,865	1,900	235	505	55	80	2,775	8,880	400	835	85	150	10,355	
2009/10	1,690	15	70	0	0	1,775	5,515	270	670	5	80	6,540	2,180	190	460	20	25	2,870	9,385	470	1,200	25	105	11,190	
2010/11	1,725	10	45	0	0	1,780	5,765	75	785	20	250	6,895	2,100	210	255	20	20	2,610	9,595	295	1,090	40	270	11,290	
2011/12	1,725	15	60	5	5	1,810	5,260	75	800	55	120	6,310	2,220	565	285	15	15	3,105	9,205	655	1,145	75	140	11,225	
2012/13	2,030	10	45	0	0	2,090	5,475	80	395	20	50	6,025	2,240	610	310	15	30	3,200	9,750	700	750	35	80	11,315	
2013/14	1,520	45	55	5	5	1,625	5,320	100	140	10	20	5,585	2,585	590	320	20	20	3,530	9,420	735	510	30	40	10,740	
2014/15	1,560	15	35	5	0	1,610	5,110	150	170	5	50	5,485	2,370	510	280	15	20	3,195	9,040	675	485	25	70	10,290	
<b>Total</b>																									
2005/06	11,035	110	640	25	175	11,985	6,970	60	250	60	55	7,395	3,690	255	655	110	435	5,150	21,695	425	1,550	195	665	24,530	
2006/07	9,895	165	400	50	225	10,735	5,880	900	220	40	145	7,185	3,650	290	685	140	400	5,165	19,425	1,355	1,310	230	770	23,090	
2007/08	10,460	140	420	40	185	11,240	5,915	30	360	40	30	6,375	3,690	335	775	125	380	5,305	20,065	500	1,555	210	590	22,920	
2008/09	10,980	205	355	45	200	11,785	5,430	160	280	35	130	6,035	3,570	305	775	135	490	5,280	19,985	670	1,410	215	825	23,100	
2009/10	11,440	215	410	45	190	12,300	5,685	270	680	30	130	6,795	4,125	250	980	85	435	5,880	21,250	740	2,070	160	760	24,975	
2010/11	10,570	235	400	35	225	11,465	5,920	75	790	20	400	7,205	3,985	280	730	90	410	5,500	20,475	585	1,920	150	1,035	24,165	
2011/12	10,545	290	315	45	1,095	12,295	5,400	75	800	60	290	6,625	4,060	640	710	90	785	6,285	20,005	1,005	1,830	195	2,170	25,205	
2012/13	10,980	275	340	45	700	12,340	5,605	80	400	25	315	6,425	4,035	680	580	80	810	6,185	20,620	1,040	1,315	145	1,825	24,950	
2013/14	11,140	330	305	50	460	12,280	5,440	105	140	15	375	6,075	4,485	700	630	95	635	6,550	21,065	1,135	1,075	165	1,465	24,900	
2014/15	10,900	845	325	120	445	12,640	5,240	155	170	10	365	5,945	4,145	630	530	85	575	5,965	20,285	1,630	1,025	220	1,390	24,545	

Source : HESA

To prevent the identification of individuals, figures in the attached table are rounded to the nearest 5, with 0, 1, 2 rounded to 0. Due to rounding, the sum of numbers in each row or column may not match the total shown.

**Table 9a: First year undergraduate enrolments at Northern Ireland HEIs by mode of study - 2005/06 to 2014/15**

Year	Undergraduate		
	Full-time	Part-time	Total
2005/06	10,960	8,420	19,380
2006/07	9,850	8,070	17,920
2007/08	10,185	7,430	17,615
2008/09	10,245	7,580	17,825
2009/10	10,780	8,320	19,095
2010/11	9,990	8,680	18,670
2011/12	10,800	8,120	18,920
2012/13	10,650	8,115	18,765
2013/14	11,145	7,210	18,355
2014/15	11,490	7,095	18,585

Source : HESA

**Table 9b: Percentage change of first year undergraduate enrolments at Northern Ireland HEIs by mode of study between 2013/14 and 2014/15**

Year	Undergraduate		
	Full-time	Part-time	Total
2013/14	11,145	7,210	18,355
2014/15	11,490	7,095	18,585
% change	3.1%	-1.6%	1.3%

Source : HESA

**Notes**

To prevent the identification of individuals, figures in the attached table are rounded to the nearest 5, with 0, 1, 2 rounded to 0. Due to rounding, the sum of numbers in each row or column may not match the total shown.

**Table 10: Enrolments at Northern Ireland HEIs by level of study, mode of study, gender, year of student and country of domicile - 2014/15**

Level	Mode	Gender	First Year Students						All Students					
			Country of domicile						Country of domicile					
			NI	GB	Rol	Other EU	Non EU	Total	NI	GB	Rol	Other EU	Non EU	Total
First Degree	Full-time	Male	4,280	440	100	65	195	5,080	13,250	715	300	105	685	15,050
		Female	5,060	390	190	55	250	5,945	15,815	715	570	75	610	17,785
		Total	9,340	830	295	120	445	11,030	29,065	1,430	865	180	1,290	32,835
	Part-time	Male	695	5	15	5	0	720	2,540	25	55	5	20	2,645
		Female	865	10	15	0	0	890	2,845	45	65	5	10	2,970
		Total	1,560	15	35	5	0	1,610	5,385	70	120	10	30	5,615
	All First Degree	Male	4,975	445	120	70	195	5,800	15,790	745	355	110	700	17,700
		Female	5,925	400	210	55	250	6,835	18,660	760	630	80	620	20,755
		Total	10,900	845	325	120	445	12,640	34,450	1,505	985	190	1,320	38,450
Other Undergraduate	Full-time	Male	65	5	0	5	180	255	155	5	0	5	185	345
		Female	65	0	0	0	140	210	115	0	5	0	140	265
		Total	130	5	0	5	320	460	270	5	5	5	325	610
	Part-time	Male	1,900	55	55	0	15	2,030	2,140	60	65	0	15	2,280
		Female	3,210	95	115	5	30	3,455	3,530	105	130	5	30	3,805
		Total	5,110	150	170	5	50	5,485	5,670	165	195	5	50	6,085
	All Other Undergraduate	Male	1,965	60	55	5	195	2,280	2,290	65	65	5	200	2,630
		Female	3,275	95	115	5	170	3,665	3,650	105	135	5	175	4,070
		Total	5,240	155	170	10	365	5,945	5,940	175	200	10	375	6,695
All Undergraduate	Full-time	Male	4,345	445	100	70	375	5,335	13,400	720	300	110	865	15,400
		Female	5,130	390	190	55	390	6,155	15,930	715	570	80	750	18,050
		Total	9,470	835	295	125	765	11,490	29,335	1,440	870	190	1,615	33,445
	Part-time	Male	2,595	60	70	5	15	2,750	4,680	90	120	5	35	4,930
		Female	4,075	105	130	5	30	4,345	6,375	150	195	10	45	6,775
		Total	6,670	165	200	10	50	7,095	11,055	240	315	15	80	11,705
	All Undergraduate	Male	6,935	505	175	75	395	8,085	18,085	810	420	115	900	20,325
		Female	9,205	495	320	60	420	10,500	22,310	865	765	90	795	24,825
		Total	16,140	1,000	495	135	815	18,585	40,390	1,675	1,185	200	1,695	45,150
Postgraduate	Full-time	Male	755	65	115	30	245	1,215	1,325	125	210	65	495	2,220
		Female	1,015	55	135	40	310	1,555	1,655	100	235	80	545	2,610
		Total	1,775	115	250	75	555	2,765	2,980	225	445	145	1,040	4,830
	Part-time	Male	765	85	105	0	5	965	1,615	195	270	15	25	2,120
		Female	1,605	430	175	10	15	2,235	3,110	730	445	25	35	4,345
		Total	2,370	510	280	15	20	3,195	4,725	925	715	40	60	6,465
	All Postgraduate	Male	1,525	145	220	35	255	2,175	2,940	320	480	80	520	4,340
		Female	2,620	480	310	55	320	3,785	4,765	830	680	105	580	6,955
		Total	4,145	630	530	85	575	5,965	7,700	1,150	1,160	185	1,100	11,295
All Students	Full-time	Male	5,100	505	215	100	625	6,545	14,725	845	510	175	1,360	17,620
		Female	6,145	445	325	95	695	7,710	17,585	815	805	160	1,295	20,660
		Total	11,245	950	540	195	1,320	14,255	32,310	1,665	1,315	335	2,655	38,280
	Part-time	Male	3,360	145	175	5	25	3,715	6,295	285	390	20	65	7,050
		Female	5,675	530	305	20	45	6,580	9,485	880	640	35	80	11,120
		Total	9,040	675	485	25	70	10,290	15,780	1,165	1,030	55	140	18,165
	All Students	Male	8,460	650	395	110	645	10,260	21,020	1,130	900	195	1,425	24,670
		Female	11,825	975	630	115	740	14,285	27,070	1,695	1,445	195	1,370	31,775
		Total	20,285	1,630	1,025	220	1,390	24,545	48,090	2,825	2,345	385	2,795	56,445

Source : HESA

To prevent the identification of individuals, figures in the attached table are rounded to the nearest 5, with 0, 1, 2 rounded to 0. Due to rounding, the sum of numbers in each row or column may not match the total shown.

**Table 10a: Enrolments at Northern Ireland HEIs by mode of study and gender - 2014/15 (with %'s)**

Mode	Gender				
	Male	Male %	Female	Female %	Total
Full-time	17,620	46.0%	20,660	54.0%	38,280
Part-time	7,050	38.8%	11,120	61.2%	18,165
<b>Total</b>	<b>24,670</b>	<b>43.7%</b>	<b>31,775</b>	<b>56.3%</b>	<b>56,445</b>

Source : HESA

**Table 10b: Enrolments at Northern Ireland HEIs by gender and mode of study - 2014/15 (with %'s)**

Gender	Mode of study				
	Full-time	Full-time %	Part-time	Part-time %	Total
Male	17,620	71.4%	7,050	28.6%	24,670
Female	20,660	65.0%	11,120	35.0%	31,775
<b>Total</b>	<b>38,280</b>	<b>67.8%</b>	<b>18,165</b>	<b>32.2%</b>	<b>56,445</b>

Source : HESA

**Table 10c: Enrolments at Northern Ireland HEIs by gender and level of study - 2014/15**

Gender	Level of study				
	First Degree	Other Undergraduate	All Undergraduate	Postgraduate	Total
Male	17,700	2,630	20,325	4,340	24,670
Female	20,755	4,070	24,825	6,955	31,775
<b>Total</b>	<b>38,450</b>	<b>6,695</b>	<b>45,150</b>	<b>11,295</b>	<b>56,445</b>

Source : HESA

**Table 10d: Proportion of enrolments at Northern Ireland HEIs by gender and level of study - 2014/15**

Gender	Level of study				
	First Degree	Other Undergraduate	All Undergraduate	Postgraduate	Total
Male	71.7%	10.7%	82.4%	17.6%	24,670
Female	65.3%	12.8%	78.1%	21.9%	31,775
<b>Total</b>	<b>68.1%</b>	<b>11.9%</b>	<b>80.0%</b>	<b>20.0%</b>	<b>56,445</b>

Source : HESA

**Notes**

To prevent the identification of individuals, figures in the attached table are rounded to the nearest 5, with 0, 1, 2 rounded to 0. Due to rounding, the sum of numbers in each row or column may not match the total shown.

Table 11: Enrolments at Northern Ireland HEIs by level of study, age group, year of student, mode of study and gender - 2014/15

Level	Age	First Year Students									All Students									
		Full-time			Part-time			Full-time & Part-time			Full-time			Part-time			Full-time & Part-time			
		Male	Female	Total	Male	Female	Total	Male	Female	Total	Male	Female	Total	Male	Female	Total	Male	Female	Total	
First Degree	Under 21	3,800	4,455	8,255	65	105	170	3,865	4,560	8,430	8,595	10,595	19,185	270	250	520	8,860	10,845	19,705	
	21 - 24	660	660	1,320	160	175	335	820	835	1,655	4,940	5,005	9,945	575	575	1,150	5,510	5,580	11,095	
	25 and over	620	830	1,450	495	610	1,105	1,115	1,440	2,555	1,520	2,185	3,705	1,805	2,140	3,945	3,325	4,325	7,650	
	Unknown	0	0	0	0	0	0	0	0	0	0	0	0	0	0	0	0	0	0	0
	Total	5,080	5,945	11,030	720	890	1,610	5,800	6,835	12,640	15,050	17,785	32,835	2,645	2,970	5,615	17,700	20,755	38,450	
Other Undergraduate	Under 21	160	125	285	275	220	495	435	345	780	205	160	365	280	245	525	485	400	890	
	21 - 24	75	65	140	170	290	460	245	355	600	95	75	175	205	340	545	300	415	715	
	25 and over	20	15	35	1,580	2,950	4,530	1,600	2,965	4,565	45	30	75	1,795	3,225	5,020	1,840	3,250	5,095	
	Unknown	0	0	0	0	0	0	0	0	0	0	0	0	0	0	0	0	0	0	0
	Total	255	210	460	2,030	3,455	5,485	2,280	3,665	5,945	345	265	610	2,280	3,805	6,085	2,630	4,070	6,695	
All Undergraduate	Under 21	3,960	4,585	8,545	340	325	665	4,300	4,905	9,210	8,800	10,750	19,550	550	495	1,045	9,350	11,245	20,595	
	21 - 24	735	725	1,460	330	465	795	1,065	1,190	2,255	5,035	5,080	10,115	775	915	1,695	5,810	5,995	11,810	
	25 and over	640	845	1,485	2,075	3,555	5,635	2,720	4,405	7,120	1,565	2,215	3,780	3,605	5,365	8,965	5,165	7,580	12,745	
	Unknown	0	0	0	0	0	0	0	0	0	0	0	0	0	0	0	0	0	0	0
	Total	5,335	6,155	11,490	2,750	4,345	7,095	8,085	10,500	18,585	15,400	18,050	33,445	4,930	6,775	11,705	20,325	24,825	45,150	
Postgraduate	Under 21	5	10	15	0	0	0	5	10	15	5	10	15	0	0	0	5	10	15	
	21 - 24	695	955	1,650	130	280	410	825	1,235	2,060	1,085	1,390	2,470	185	405	590	1,270	1,790	3,060	
	25 and over	510	590	1,100	835	1,950	2,785	1,345	2,540	3,885	1,130	1,215	2,345	1,935	3,940	5,875	3,065	5,155	8,215	
	Unknown	0	0	0	0	0	0	0	0	0	0	0	0	0	0	0	0	0	0	0
	Total	1,215	1,555	2,765	965	2,235	3,195	2,175	3,785	5,965	2,220	2,610	4,830	2,120	4,345	6,465	4,340	6,955	11,295	
All Students	Under 21	3,965	4,590	8,560	340	325	665	4,310	4,915	9,225	8,805	10,760	19,565	550	495	1,045	9,355	11,255	20,610	
	21 - 24	1,430	1,680	3,110	460	745	1,205	1,890	2,425	4,315	6,120	6,470	12,590	965	1,320	2,285	7,085	7,790	14,870	
	25 and over	1,150	1,435	2,585	2,910	5,510	8,420	4,065	6,945	11,005	2,695	3,430	6,125	5,535	9,300	14,840	8,230	12,730	20,960	
	Unknown	0	0	0	0	0	0	0	0	0	0	0	0	0	0	0	0	0	0	0
	Total	6,545	7,710	14,255	3,715	6,580	10,290	10,260	14,285	24,545	17,620	20,660	38,280	7,050	11,120	18,165	24,670	31,775	56,445	

Source : HESA

To prevent the identification of individuals, figures in the attached table are rounded to the nearest 5, with 0, 1, 2 rounded to 0. Due to rounding, the sum of numbers in each row or column may not match the total shown.

**Table 11a: Enrolments at Northern Ireland HEIs by level of study and age group - 2014/15 (with %s)**

Level	Age group								
	Under 21	Under 21 %	21-24	21-24 %	25 and over	25 and over %	Unknown	Unknown %	Total
First Degree	19,705	51.3%	11,095	28.8%	7,650	19.9%	0	0.0%	38,450
Other Undergraduate	890	13.3%	715	10.7%	5,095	76.0%	0	0.0%	6,695
All Undergraduate	20,595	45.6%	11,810	26.2%	12,745	28.2%	0	0.0%	45,150
Postgraduate	15	0.1%	3,060	27.1%	8,215	72.7%	0	0.0%	11,295
All Students	20,610	36.5%	14,870	26.3%	20,960	37.1%	0	0.0%	56,445

Source : HESA

**Table 11b: Enrolments at Northern Ireland HEIs by age group and level of study - 2014/15 (with %s)**

Age group	Level of study								
	First Degree	First Degree %	Other Undergraduate	Other Undergraduate %	All Undergraduate	All Undergraduate %	Postgraduate	Postgraduate %	Total
Under 21	19,705	95.6%	890	4.3%	20,595	99.9%	15	0.1%	20,610
21 - 24	11,095	74.6%	715	4.8%	11,810	79.4%	3,060	20.6%	14,870
25 and over	7,650	36.5%	5,095	24.3%	12,745	60.8%	8,215	39.2%	20,960
Unknown	0	-	0	-	0	-	0	-	0
Total	38,450	68.1%	6,695	11.9%	45,150	80.0%	11,295	20.0%	56,445

Source : HESA

**Table 11c: Enrolments at Northern Ireland HEIs by age group, mode of study and level of study - 2014/15**

Age	Mode of study										
	Full-time					Part-time					Total
	First Degree	Other Undergraduate	All Undergraduate	Postgraduate	Total	First Degree	Other Undergraduate	All Undergraduate	Postgraduate	Total	
Under 21	19,185	365	19,550	15	19,565	520	525	1,045	0	1,045	20,610
21 - 24	9,945	175	10,115	2,470	12,590	1,150	545	1,695	590	2,285	14,870
25 and over	3,705	75	3,780	2,345	6,125	3,945	5,020	8,965	5,875	14,840	20,960
Unknown	0	0	0	0	0	0	0	0	0	0	0
Total	32,835	610	33,445	4,830	38,280	5,615	6,085	11,705	6,465	18,165	56,445

Source : HESA

**Table 11d: Proportion of enrolments at Northern Ireland HEIs in each mode and level of study by age group - 2014/15**

Age	Mode of study										
	Full-time					Part-time					Total
	First Degree	Other Undergraduate	All Undergraduate	Postgraduate	Total	First Degree	Other Undergraduate	All Undergraduate	Postgraduate	Total	
Under 21	93.1%	1.8%	94.9%	0.1%	94.9%	2.5%	2.5%	5.1%	0.0%	5.1%	20,610
21 - 24	66.9%	1.2%	68.0%	16.6%	84.6%	7.7%	3.7%	11.4%	4.0%	15.4%	14,870
25 and over	17.7%	0.3%	18.0%	11.2%	29.2%	18.8%	23.9%	42.8%	28.0%	70.8%	20,960
Unknown	-	-	-	-	-	-	-	-	-	-	0
Total	58.2%	1.1%	59.3%	8.6%	67.8%	9.9%	10.8%	20.7%	11.5%	32.2%	56,445

Source : HESA

**Notes**

To prevent the identification of individuals, figures in the attached table are rounded to the nearest 5, with 0, 1, 2 rounded to 0. Due to rounding, the sum of numbers in each row or column may not match the total shown. Due to there being five or less students in the 'unknown' age group, percentage breakdowns have not been given for these students as this would allow for the identification of individuals.

**Table 12: Enrolments at Northern Ireland HEIs by subject area, year of student, mode of study and gender - 2014/15**

Subject Area	First Year Students									All Students								
	Full-time			Part-time			Full-time & Part-time			Full-time			Part-time			Full-time & Part-time		
	Male	Female	Total	Male	Female	Total	Male	Female	Total	Male	Female	Total	Male	Female	Total	Male	Female	Total
Medicine & Dentistry	140	280	420	55	85	145	195	365	565	690	1,085	1,775	135	165	300	825	1,250	2,075
Subjects Allied to Medicine	320	1,395	1,710	200	1,510	1,710	515	2,905	3,420	1,000	4,080	5,080	380	2,285	2,665	1,380	6,365	7,745
Biological Sciences	455	680	1,140	110	205	315	565	885	1,450	1,160	1,765	2,930	335	580	915	1,495	2,350	3,845
Veterinary Science	0	0	0	0	0	0	0	0	0	0	0	0	0	0	0	0	0	0
Agriculture & Related Subjects	70	115	185	20	40	55	85	155	240	205	335	540	40	75	115	245	410	655
Physical Sciences	275	220	495	65	35	100	340	255	595	790	600	1,390	210	140	350	1,000	740	1,740
Mathematical Sciences	80	60	140	25	25	45	100	80	185	220	195	415	90	50	140	310	245	560
Computer Science	945	305	1,250	155	40	195	1,100	345	1,440	2,665	865	3,525	525	100	625	3,190	965	4,150
Engineering & Technology	910	220	1,125	130	35	165	1,040	255	1,295	2,685	570	3,255	395	80	475	3,080	650	3,730
Architecture, Building & Planning	325	120	445	80	65	145	405	185	590	910	360	1,270	200	115	320	1,115	475	1,590
Social studies	430	785	1,215	215	610	820	645	1,395	2,035	1,120	1,995	3,115	505	1,215	1,715	1,620	3,210	4,830
Law	260	440	700	55	75	130	310	520	830	610	1,020	1,630	185	260	445	790	1,280	2,075
Business & Administrative Studies	1,345	1,200	2,545	555	525	1,080	1,900	1,725	3,620	3,005	2,980	5,985	1,140	1,140	2,280	4,145	4,125	8,270
Mass Communications and Documentation	105	170	275	25	30	50	130	200	330	285	450	730	50	60	110	335	505	840
Languages	140	390	530	55	95	145	190	485	675	410	1,060	1,470	160	265	425	570	1,325	1,895
Historical and Philosophical Studies	245	185	430	50	40	90	295	225	520	625	540	1,165	195	160	355	820	700	1,520
Creative Arts & Design	310	520	830	40	30	70	350	550	900	785	1,310	2,095	130	95	230	915	1,410	2,325
Education	185	605	790	1,280	2,465	3,745	1,465	3,070	4,535	425	1,425	1,845	1,500	3,405	4,905	1,920	4,830	6,750
Combined	20	15	35	610	670	1,280	630	690	1,315	30	25	55	875	925	1,800	900	950	1,850
<b>Total</b>	<b>6,545</b>	<b>7,710</b>	<b>14,255</b>	<b>3,715</b>	<b>6,580</b>	<b>10,290</b>	<b>10,260</b>	<b>14,285</b>	<b>24,545</b>	<b>17,620</b>	<b>20,660</b>	<b>38,280</b>	<b>7,050</b>	<b>11,120</b>	<b>18,165</b>	<b>24,670</b>	<b>31,775</b>	<b>56,445</b>

Source : HESA

To prevent the identification of individuals, figures in the attached table are rounded to the nearest 5, with 0, 1, 2 rounded to 0. Due to rounding, the sum of numbers in each row or column may not match the total shown.



**Table 12a: Enrolments at Northern Ireland HEIs by gender and STEM - 2014/15 (with %s)**

Gender	STEM category				Total
	Broad STEM	Broad STEM %	Narrow STEM	Narrow STEM %	
Male	12,645	51.3%	9,075	36.8%	24,670
Female	13,450	42.3%	4,945	15.6%	31,775
Total	26,095	46.2%	14,025	24.8%	56,445

Source : HESA

**Table 12b: Enrolments at Northern Ireland HEIs by STEM and mode of study - 2014/15 (with %s)**

Mode	STEM category				Total
	Broad STEM	Broad STEM %	Narrow STEM	Narrow STEM %	
Full-time	20,185	52.7%	11,520	30.1%	38,280
Part-time	5,905	32.5%	2,510	13.8%	18,165
Total	26,095	46.2%	14,025	24.8%	56,445

Source : HESA

**Table 12c: Enrolments at Northern Ireland HEIs by subject area and gender - 2014/15 (with %s)**

Subject Area	Gender				Total
	Male	Male %	Female	Female %	
Business & Administrative Studies	4,145	50.1%	4,125	49.9%	8,270
Subjects Allied to Medicine	1,380	17.8%	6,365	82.2%	7,745
Education	1,920	28.5%	4,830	71.5%	6,750
Social studies	1,620	33.6%	3,210	66.4%	4,830
Computer Science	3,190	76.8%	965	23.2%	4,150
Biological Sciences	1,495	38.9%	2,350	61.1%	3,845
Engineering & Technology	3,080	82.5%	650	17.5%	3,730
Creative Arts & Design	915	39.4%	1,410	60.6%	2,325
Medicine & Dentistry	825	39.8%	1,250	60.2%	2,075
Law	790	38.2%	1,280	61.8%	2,075
Languages	570	30.1%	1,325	69.9%	1,895
Combined	900	48.7%	950	51.3%	1,850
Physical Sciences	1,000	57.6%	740	42.4%	1,740
Architecture, Building & Planning	1,115	70.1%	475	29.9%	1,590
Historical and Philosophical Studies	820	54.0%	700	46.0%	1,520
Mass Communications and Documentation	335	39.8%	505	60.3%	840
Agriculture & Related Subjects	245	37.5%	410	62.5%	655
Mathematical Sciences	310	55.8%	245	44.0%	560
Veterinary Science	0	-	0	-	0
Total	24,670	43.7%	31,775	56.3%	56,445

Source : HESA

Notes

To prevent the identification of individuals, figures in the attached table are rounded to the nearest 5, with 0, 1, 2 rounded to 0. Due to rounding, the sum of numbers in each row or column may not match the total shown.

Table 13: Enrolments at Northern Ireland HEIs by level of study, mode of study and institution - 2010/11 to 2014/15

Level and Year	Full-time						Part-time						Total					
	Institution						Institution						Institution					
	QUB <sup>(1)</sup>	UU <sup>(2)</sup>	Stranmillis <sup>(3)</sup>	St Mary's <sup>(4)</sup>	OU <sup>(5)</sup>	Total	QUB <sup>(1)</sup>	UU <sup>(2)</sup>	Stranmillis <sup>(3)</sup>	St Mary's <sup>(4)</sup>	OU <sup>(5)</sup>	Total	QUB <sup>(1)</sup>	UU <sup>(2)</sup>	Stranmillis <sup>(3)</sup>	St Mary's <sup>(4)</sup>	OU <sup>(5)</sup>	Total
<b>First Degree</b>																		
2010/11	13,560	15,185	835	860	0	30,440	895	2,020	195	5	2,595	5,715	14,455	17,205	1,030	865	2,595	36,155
2011/12	13,490	16,175	840	865	0	31,375	830	1,975	205	10	2,790	5,810	14,320	18,150	1,045	875	2,790	37,185
2012/13	13,860	15,905	805	860	0	31,435	700	2,225	205	5	3,000	6,130	14,560	18,130	1,010	865	3,000	37,565
2013/14	14,135	16,000	845	845	0	31,825	565	2,155	140	15	3,005	5,885	14,700	18,155	985	860	3,005	37,710
2014/15	14,645	16,510	830	850	0	32,835	510	1,840	195	10	3,065	5,615	15,155	18,350	1,025	860	3,065	38,450
<b>Other Undergraduate</b>																		
2010/11	225	120	50	0	0	390	3,675	2,965	90	0	1,995	8,730	3,900	3,085	140	0	1,995	9,120
2011/12	275	120	50	0	0	445	3,270	2,465	100	0	1,770	7,605	3,545	2,585	150	0	1,770	8,050
2012/13	285	180	60	0	0	525	3,230	2,350	110	0	1,195	6,885	3,515	2,525	175	0	1,195	7,415
2013/14	265	315	100	0	0	680	3,405	1,865	80	0	880	6,230	3,670	2,180	180	0	880	6,915
2014/15	300	210	100	0	0	610	3,405	2,015	110	0	560	6,085	3,700	2,220	215	0	560	6,695
<b>All Undergraduate</b>																		
2010/11	13,785	15,305	885	860	0	30,830	4,570	4,990	290	5	4,590	14,445	18,355	20,295	1,170	865	4,590	45,275
2011/12	13,765	16,300	890	865	0	31,820	4,100	4,440	305	10	4,560	13,420	17,865	20,740	1,195	875	4,560	45,235
2012/13	14,145	16,085	870	860	0	31,960	3,925	4,575	315	5	4,195	13,015	18,075	20,655	1,185	865	4,195	44,975
2013/14	14,400	16,315	945	845	0	32,505	3,970	4,020	220	15	3,885	12,115	18,370	20,335	1,165	860	3,885	44,620
2014/15	14,945	16,720	935	850	0	33,445	3,915	3,855	305	10	3,625	11,705	18,855	20,570	1,240	860	3,625	45,150
<b>Postgraduate</b>																		
2010/11	3,740	1,905	30	20	0	5,690	2,105	3,320	100	100	270	5,895	5,840	5,225	130	120	270	11,585
2011/12	2,835	2,265	45	20	0	5,165	2,290	3,555	95	125	250	6,320	5,120	5,820	145	145	250	11,485
2012/13	2,510	2,325	35	20	0	4,885	2,115	3,480	240	215	245	6,295	4,625	5,800	275	235	245	11,180
2013/14	2,615	2,335	25	20	0	5,000	2,330	3,530	330	330	250	6,775	4,950	5,865	360	350	250	11,775
2014/15	2,785	2,000	25	20	0	4,830	2,210	3,510	295	275	175	6,465	4,995	5,510	315	295	175	11,295
<b>Total</b>																		
2010/11	17,525	17,210	915	880	0	36,520	6,675	8,310	385	105	4,860	20,335	24,195	25,520	1,300	985	4,860	56,860
2011/12	16,600	18,565	935	885	0	36,985	6,390	7,995	400	140	4,815	19,740	22,985	26,560	1,340	1,020	4,815	56,720
2012/13	16,655	18,405	900	880	0	36,845	6,045	8,050	560	220	4,440	19,310	22,700	26,460	1,460	1,100	4,440	56,155
2013/14	17,020	18,650	970	865	0	37,505	6,300	7,555	555	345	4,135	18,890	23,320	26,200	1,525	1,210	4,135	56,395
2014/15	17,730	18,720	955	870	0	38,280	6,120	7,365	600	285	3,795	18,165	23,855	26,085	1,555	1,155	3,795	56,445

Source : HESA

**Notes**

(1) The Queen's University of Belfast (2) Ulster University (3) Stranmillis University College (4) St Mary's University College (5) Open University

To prevent the identification of individuals, figures in the attached table are rounded to the nearest 5, with 0, 1, 2 rounded to 0. Due to rounding, the sum of numbers in each row or column may not match the total shown.

Table 13a: Percentage change of enrolments at Northern Ireland HEIs in each level of study and institution between 2013/14 and 2014/15

Year	Mode of study																	
	Full-time						Part-time						Total					
	Institution						Institution						Institution					
	QUB	UU	Stranmillis	St Mary's	OU	Total	QUB	UU	Stranmillis	St Mary's	OU	Total	QUB	UU	Stranmillis	St Mary's	OU	Total
2013/14	17,020	18,650	970	865	0	37,505	6,300	7,555	555	345	4,135	18,890	23,320	26,200	1,525	1,210	4,135	56,395
2014/15	17,730	18,720	955	870	0	38,280	6,120	7,365	600	285	3,795	18,165	23,855	26,085	1,555	1,155	3,795	56,445
% change	4.2%	0.4%	-1.5%	0.5%	-	2.1%	-2.8%	-2.5%	7.9%	-17.1%	-8.2%	-3.8%	2.3%	-0.5%	1.9%	-4.5%	-8.2%	0.1%

Source : HESA

Table 13b: Proportion of enrolments at Northern Ireland HEIs in each institution by mode of study - 2014/15

Mode	Institution					
	QUB	UU	Stranmillis	St Mary's	OU	Total
Full-time	46.3%	48.9%	2.5%	2.3%	0.0%	38,280
Part-time	33.7%	40.5%	3.3%	1.6%	20.9%	18,165
Total	42.3%	46.2%	2.8%	2.0%	6.7%	56,445

Source : HESA

Table 13c: Percentage change of enrolments at UU Birmingham and London by mode of study between 2013/14 and 2014/15

Mode and Year	Ulster University		Total	
	Birmingham	London		
Full-time	2013/14	405	975	1,375
	2014/15	300	1,025	1,330
	% change	-25.3%	5.5%	-3.5%
Part-time	2013/14	0	0	0
	2014/15	0	0	0
	% change	-	-	-
Total	2013/14	405	975	1,375
	2014/15	300	1,025	1,330
	% change	-25.3%	5.5%	-3.5%

Source : HESA

Notes

To prevent the identification of individuals, figures in the attached table are rounded to the nearest 5, with 0, 1, 2 rounded to 0. Due to rounding, the sum of numbers in each row or column may not match the total shown.

**Table 13d: Percentage change of enrolments at Northern Ireland HEIs (not including UU Birmingham or London) by mode of study between 2013/14 and 2014/15**

Mode and Year	Institution						
	QUB	UU	Stranmillis	St Mary's	OU	Total	
Full-time	2013/14	17,020	17,270	970	865	0	36,130
	2014/15	17,730	17,390	955	870	0	36,950
	% change	4.2%	0.7%	-1.5%	0.5%	-	2.3%
Part-time	2013/14	6,300	7,555	555	345	4,135	18,890
	2014/15	6,120	7,365	600	285	3,795	18,165
	% change	-2.8%	-2.5%	7.9%	-17.1%	-8.2%	-3.8%
Total	2013/14	23,320	24,825	1,525	1,210	4,135	55,020
	2014/15	23,855	24,755	1,555	1,155	3,795	55,115
	% change	2.3%	-0.3%	1.9%	-4.5%	-8.2%	0.2%

Source : HESA

**Table 13e: Percentage change of enrolments at Northern Ireland HEIs in each institution by level of study between 2013/14 and 2014/15**

Level and Year	Institution						
	QUB	UU	Stranmillis	St Mary's	OU	Total	
First Degree	2013/14	14,700	18,155	985	860	3,005	37,710
	2014/15	15,155	18,350	1,025	860	3,065	38,450
	% change	3.1%	1.1%	3.9%	-0.2%	2.0%	2.0%
Other Undergraduate	2013/14	3,670	2,180	180	0	880	6,915
	2014/15	3,700	2,220	215	0	560	6,695
	% change	0.8%	1.9%	18.3%	-	-36.5%	-3.1%
All Undergraduate	2013/14	18,370	20,335	1,165	860	3,885	44,620
	2014/15	18,855	20,570	1,240	860	3,625	45,150
	% change	2.6%	1.2%	6.1%	-0.2%	-6.8%	1.2%
Postgraduate	2013/14	4,950	5,865	360	350	250	11,775
	2014/15	4,995	5,510	315	295	175	11,295
	% change	1.0%	-6.1%	-11.7%	-15.1%	-30.7%	-4.1%
Total	2013/14	23,320	26,200	1,525	1,210	4,135	56,395
	2014/15	23,855	26,085	1,555	1,155	3,795	56,445
	% change	2.3%	-0.5%	1.9%	-4.5%	-8.2%	0.1%

Source : HESA

**Notes**

To prevent the identification of individuals, figures in the attached table are rounded to the nearest 5, with 0, 1, 2 rounded to 0. Due to rounding, the sum of numbers in each row or column may not match the total

## UK COMPARISON

**Table 14: All enrolments at UK HEIs including OU by level of study, mode of study and location of institution - 2010/11 to 2014/15**

Level and Year	Full-time					Part-time					Total				
	Location of Institution					Location of Institution					Location of Institution				
	NI	England	Scotland	Wales	Total UK	NI	England	Scotland	Wales	Total UK	NI	England	Scotland	Wales	Total UK
<b>First Degree</b>															
2010/11	30,440	1,019,220	130,025	70,570	1,250,255	5,715	180,515	18,740	8,855	213,825	36,155	1,199,735	148,765	79,425	1,464,080
2011/12	31,375	1,076,115	131,050	73,580	1,312,115	5,810	196,460	17,380	9,600	229,250	37,185	1,272,575	148,425	83,180	1,541,365
2012/13	31,435	1,076,195	132,040	72,665	1,312,335	6,130	182,365	17,820	9,830	216,145	37,565	1,258,560	149,860	82,490	1,528,480
2013/14	31,825	1,095,175	133,820	73,425	1,334,245	5,885	166,945	17,505	9,280	199,610	37,710	1,262,120	151,325	82,705	1,533,855
2014/15	32,835	1,099,325	136,230	72,200	1,340,595	5,615	152,050	17,095	8,870	183,630	38,450	1,251,375	153,325	81,070	1,524,225
<b>Other Undergraduate</b>															
2010/11	390	106,190	5,370	5,125	117,075	8,730	270,035	28,020	24,640	331,420	9,120	376,220	33,390	29,765	448,495
2011/12	445	90,480	4,815	4,120	99,860	7,605	229,890	24,860	24,560	286,915	8,050	320,370	29,675	28,680	386,775
2012/13	525	64,400	4,020	4,390	73,340	6,885	148,940	23,590	22,605	202,020	7,415	213,340	27,610	26,995	275,360
2013/14	680	47,745	4,700	4,215	57,340	6,230	120,595	20,675	21,225	168,720	6,915	168,340	25,370	25,435	226,065
2014/15	610	40,970	5,180	4,350	51,110	6,085	109,165	17,870	19,435	152,555	6,695	150,135	23,050	23,785	203,670
<b>All Undergraduate</b>															
2010/11	30,830	1,125,410	135,395	75,695	1,367,330	14,445	450,550	46,765	33,495	545,250	45,275	1,575,955	182,155	109,190	1,912,580
2011/12	31,820	1,166,595	135,860	77,700	1,411,975	13,420	426,350	42,235	34,160	516,165	45,235	1,592,945	178,100	111,860	1,928,140
2012/13	31,960	1,140,600	136,060	77,055	1,385,675	13,015	331,305	41,410	32,435	418,165	44,975	1,471,905	177,470	109,490	1,803,840
2013/14	32,505	1,142,920	138,520	77,635	1,391,585	12,115	287,540	38,175	30,505	368,335	44,620	1,430,460	176,695	108,140	1,759,915
2014/15	33,445	1,140,300	141,410	76,550	1,391,705	11,705	261,215	34,965	28,305	336,190	45,150	1,401,515	176,370	104,860	1,727,895
<b>Postgraduate</b>															
2010/11	5,690	257,235	30,955	16,130	310,015	5,895	232,545	25,500	14,770	278,705	11,585	489,780	56,455	30,900	588,720
2011/12	5,165	257,260	31,505	15,495	309,425	6,320	216,280	23,385	13,095	259,080	11,485	473,540	54,890	28,590	568,505
2012/13	4,885	244,720	31,005	15,860	296,470	6,295	199,040	22,475	12,160	239,965	11,180	443,760	53,480	28,020	536,440
2013/14	5,000	250,555	32,280	16,610	304,445	6,775	194,005	21,825	12,385	234,995	11,775	444,560	54,105	28,995	539,440
2014/15	4,830	251,680	33,435	15,500	305,445	6,465	190,905	22,765	12,605	232,740	11,295	442,580	56,200	28,105	538,180
<b>Total</b>															
2010/11	36,520	1,382,645	166,350	91,830	1,677,345	20,335	683,095	72,260	48,265	823,955	56,860	2,065,735	238,610	140,090	2,501,295
2011/12	36,985	1,423,855	167,365	93,195	1,721,400	19,740	642,630	65,620	47,255	775,240	56,720	2,066,485	232,985	140,450	2,496,645
2012/13	36,845	1,385,315	167,065	92,915	1,682,145	19,310	530,345	63,885	44,590	658,130	56,155	1,915,660	230,950	137,510	2,340,275
2013/14	37,505	1,393,475	170,800	94,250	1,696,030	18,890	481,545	60,000	42,890	603,325	56,395	1,875,020	230,805	137,135	2,299,355
2014/15	38,280	1,391,975	174,840	92,050	1,697,150	18,165	452,120	57,730	40,915	568,930	56,445	1,844,095	232,570	132,965	2,266,075

Source : HESA

### Notes

<sup>(1)</sup> Open University

To prevent the identification of individuals, figures in the attached table are rounded to the nearest 5, with 0, 1, 2 rounded to 0. Due to rounding, the sum of numbers in each row or column may not match the total shown.

**Table 14a: Percentage change of enrolments at UK HEIs in each institution by mode of study between 2013/14 and 2014/15**

Mode and Year	Location of Institution					
	NI	England	Scotland	Wales	Total UK	
Full-time	2013/14	37,505	1,393,475	170,800	94,250	1,696,030
	2014/15	38,280	1,391,975	174,840	92,050	1,697,150
	% change	2.1%	-0.1%	2.4%	-2.3%	0.1%
Part-time	2013/14	18,890	481,545	60,000	42,890	603,325
	2014/15	18,165	452,120	57,730	40,915	568,930
	% change	-3.8%	-6.1%	-3.8%	-4.6%	-5.7%
Total	2013/14	56,395	1,875,020	230,805	137,135	2,299,355
	2014/15	56,445	1,844,095	232,570	132,965	2,266,075
	% change	0.1%	-1.6%	0.8%	-3.0%	-1.4%

Source : HESA

Notes

<sup>(1)</sup> Open University

To prevent the identification of individuals, figures in the attached table are rounded to the nearest 5, with 0, 1, 2 rounded to 0. Due to rounding, the sum of numbers in each row or column may not match the total shown.

## **ANNEX B: Tables based on HESA's change in methodology**

Table 15 below shows how Table 13 in the main bulletin would look under DEL's old methodology. Enrolments at the Open University in Northern Ireland would not be included in the table below and the overall totals would decrease. More information on this change in methodology can be seen in point 4 of the notes and definitions section.

**Table 15: Enrolments at Northern Ireland HEIs (excluding NI OU) by level of study, mode of study and institution - 2010/11 to 2014/15**

Level of study	Academic year	Mode of study														
		Full-time					Part-time					Total				
		Institution identifier					Institution identifier					Institution identifier				
		QUB <sup>(1)</sup>	UU <sup>(2)</sup>	Stranmillis <sup>(3)</sup>	St Mary's <sup>(4)</sup>	Total	QUB <sup>(1)</sup>	UU <sup>(2)</sup>	Stranmillis <sup>(3)</sup>	St Mary's <sup>(4)</sup>	Total	QUB <sup>(1)</sup>	UU <sup>(2)</sup>	Stranmillis <sup>(3)</sup>	St Mary's <sup>(4)</sup>	Total
First degree	2010/11	13,560	15,185	835	860	30,440	895	2,020	195	5	3,120	14,455	17,205	1,030	865	33,560
	2011/12	13,490	16,175	840	865	31,375	830	1,975	205	10	3,020	14,320	18,150	1,045	875	34,395
	2012/13	13,860	15,905	805	860	31,435	700	2,225	205	5	3,130	14,560	18,130	1,010	865	34,565
	2013/14	14,135	16,000	845	845	31,825	565	2,155	140	15	2,880	14,700	18,155	985	860	34,705
	2014/15	14,645	16,510	830	850	32,835	510	1,840	195	10	2,555	15,155	18,350	1,025	860	35,390
Other undergraduate	2010/11	225	120	50	0	390	3,675	2,965	90	0	6,735	3,900	3,085	140	0	7,125
	2011/12	275	120	50	0	445	3,270	2,465	100	0	5,835	3,545	2,585	150	0	6,280
	2012/13	285	180	60	0	525	3,230	2,350	110	0	5,690	3,515	2,525	175	0	6,215
	2013/14	265	315	100	0	680	3,405	1,865	80	0	5,350	3,670	2,180	180	0	6,030
	2014/15	300	210	100	0	610	3,405	2,015	110	0	5,525	3,700	2,220	215	0	6,135
All undergraduate	2010/11	13,785	15,305	885	860	30,830	4,570	4,990	290	5	9,855	18,355	20,295	1,170	865	40,685
	2011/12	13,765	16,300	890	865	31,820	4,100	4,440	305	10	8,855	17,865	20,740	1,195	875	40,675
	2012/13	14,145	16,085	870	860	31,960	3,925	4,575	315	5	8,820	18,075	20,655	1,185	865	40,780
	2013/14	14,400	16,315	945	845	32,505	3,970	4,020	220	15	8,230	18,370	20,335	1,165	860	40,735
	2014/15	14,945	16,720	935	850	33,445	3,915	3,855	305	10	8,080	18,855	20,570	1,240	860	41,525
Postgraduate	2010/11	3,740	1,905	30	20	5,690	2,105	3,320	100	100	5,625	5,840	5,225	130	120	11,315
	2011/12	2,835	2,265	45	20	5,165	2,290	3,555	95	125	6,070	5,120	5,820	145	145	11,235
	2012/13	2,510	2,325	35	20	4,885	2,115	3,480	240	215	6,050	4,625	5,800	275	235	10,935
	2013/14	2,615	2,335	25	20	5,000	2,330	3,530	330	330	6,525	4,950	5,865	360	350	11,525
	2014/15	2,785	2,000	25	20	4,830	2,210	3,510	295	275	6,290	4,995	5,510	315	295	11,120
Total	2010/11	17,525	17,210	915	880	36,520	6,675	8,310	385	105	15,480	24,195	25,520	1,300	985	52,000
	2011/12	16,600	18,565	935	885	36,985	6,390	7,995	400	140	14,925	22,985	26,560	1,340	1,020	51,905
	2012/13	16,655	18,405	900	880	36,845	6,045	8,050	560	220	14,870	22,700	26,460	1,460	1,100	51,715
	2013/14	17,020	18,650	970	865	37,505	6,300	7,555	555	345	14,755	23,320	26,200	1,525	1,210	52,260
	2014/15	17,730	18,720	955	870	38,280	6,120	7,365	600	285	14,370	23,855	26,085	1,555	1,155	52,650

Source: Higher Education Statistics Agency (HESA)

**Notes:**

(1) Queen's University Belfast (2) Ulster University (3) Stranmillis University College (4) St Mary's University College

To prevent the identification of individuals figures have been rounded to the nearest 5, with 0, 1 and 2 rounded to 0. Due to rounding, the sum of numbers in each row or column may not match the total shown.



**Table 15a: Enrolments at NI HEIs by mode of study and institution - 2014/15**

Old methodology and DEL's new methodology

Mode of study	Institution identifier	Old methodology	Current methodology
Full-time	QUB <sup>(1)</sup>	17,730	17,730
	UU <sup>(2)</sup>	18,720	18,720
	Stranmillis <sup>(3)</sup>	955	955
	St Mary's <sup>(4)</sup>	870	870
	OU <sup>(5)</sup>		0
	<b>Total</b>	<b>38,280</b>	<b>38,280</b>
Part-time	QUB <sup>(1)</sup>	6,120	6,120
	UU <sup>(2)</sup>	7,365	7,365
	Stranmillis <sup>(3)</sup>	600	600
	St Mary's <sup>(4)</sup>	285	285
	OU <sup>(5)</sup>		3,795
	<b>Total</b>	<b>14,370</b>	<b>18,165</b>
Total	QUB <sup>(1)</sup>	23,855	23,855
	UU <sup>(2)</sup>	26,085	26,085
	Stranmillis <sup>(3)</sup>	1,555	1,555
	St Mary's <sup>(4)</sup>	1,155	1,155
	OU <sup>(5)</sup>		3,795
	<b>Total</b>	<b>52,650</b>	<b>56,445</b>

Source: Higher Education Statistics Agency (HESA)

**Table 15b: Enrolments at NI HEIs by level of study and institution -**

Old methodology and DEL's new methodology

Level of study	Institution identifier	Old methodology	Current methodology
First degree	QUB <sup>(1)</sup>	15,155	15,155
	UU <sup>(2)</sup>	18,350	18,350
	Stranmillis <sup>(3)</sup>	1,025	1,025
	St Mary's <sup>(4)</sup>	860	860
	OU <sup>(5)</sup>		3,065
	<b>Total</b>	<b>35,390</b>	<b>38,450</b>
Other undergraduate	QUB <sup>(1)</sup>	3,700	3,700
	UU <sup>(2)</sup>	2,220	2,220
	Stranmillis <sup>(3)</sup>	215	215
	St Mary's <sup>(4)</sup>	0	0
	OU <sup>(5)</sup>		560
	<b>Total</b>	<b>6,135</b>	<b>6,695</b>
All undergraduate	QUB <sup>(1)</sup>	18,855	18,855
	UU <sup>(2)</sup>	20,570	20,570
	Stranmillis <sup>(3)</sup>	1,240	1,240
	St Mary's <sup>(4)</sup>	860	860
	OU <sup>(5)</sup>		3,625
	<b>Total</b>	<b>41,525</b>	<b>45,150</b>
Postgraduate	QUB <sup>(1)</sup>	4,995	4,995
	UU <sup>(2)</sup>	5,510	5,510
	Stranmillis <sup>(3)</sup>	315	315
	St Mary's <sup>(4)</sup>	295	295
	OU <sup>(5)</sup>		175
	<b>Total</b>	<b>11,120</b>	<b>11,295</b>
Total	QUB <sup>(1)</sup>	23,855	23,855
	UU <sup>(2)</sup>	26,085	26,085
	Stranmillis <sup>(3)</sup>	1,555	1,555
	St Mary's <sup>(4)</sup>	1,155	1,155
	OU <sup>(5)</sup>		3,795
	<b>Total</b>	<b>52,650</b>	<b>56,445</b>

Source: Higher Education Statistics Agency (HESA)

**Notes:**

(1) Queen's University Belfast (2) Ulster University (3) Stranmillis University College (4) St Mary's University College (5) Open University

To prevent the identification of individuals figures have been rounded to the nearest 5, with 0, 1 and 2 rounded to 0. Due to rounding, the sum of numbers in each row or column may not match the total shown.