

# Qualifications gained at UK Higher Education Institutions:

## Northern Ireland analysis 2014/15

**Date of Publication:**  
18 February 2016

**Frequency of Publication:**  
Annual

**Issued by:**  
Statistics and Research Branch  
Tertiary Education  
Department for Employment  
and Learning  
Adelaide House  
39-49 Adelaide Street  
Belfast  
BT2 8FD

**Public Enquiries:**  
Statistics and Research Branch  
Tertiary Education  
(028) 9025 7895

**Statistician:**  
Andy Bannon

**Email:**  
[analyticalservices@delni.gov.uk](mailto:analyticalservices@delni.gov.uk)

**Internet:**  
<https://www.delni.gov.uk/topics/del-statistics-and-research>

This statistical bulletin has been produced by the Department for Employment and Learning (DEL), Northern Ireland (NI) and provides information on qualifications gained by students at NI Higher Education Institutions (HEIs) and by NI domiciled students at UK HEIs.

- Over the last ten academic years, the number of NI domiciled qualifiers decreased by 2.0% from 18,425 in 2005/06 to 18,065 in 2014/15. Between 2013/14 and 2014/15 this figure decreased by 0.5% (Tables 1a and b).
- 73.0% of NI domiciled 'first degree' graduates from UK HEIs achieved either a first class or upper second class honours degree. (Table 5b).
- 46.1% of qualifications gained by NI domiciled students at UK HEIs were in a Broad STEM related subject and 22.3% in a Narrow STEM related subject in 2014/15 (Table 4b).
- Although fluctuating over the years, the number of qualifications gained by students at NI HEIs has decreased by 0.8% from 16,130 in 2005/06 to 16,010 in 2014/15. Between 2013/14 and 2014/15, this figure increased by 0.6% (Tables 6b and 6c).
- 71.2% of 'first degree' graduates from NI HEIs achieved either a first class or upper second class honours degree. (Tables 9b).
- 45.9% of qualifications gained by students at NI HEIs were in a Broad STEM related subject and 21.9% in a Narrow STEM related subject in 2014/15 (Tables 8b).

## READER INFORMATION

Purpose	Monitor and report on 1) NI domiciled Qualifiers from Higher Education Institutions in the United Kingdom, and 2) All Qualifiers from NI Higher Education Institutions.
Authors	Andrew Bannon, Kerry McColgan, Michael MacNeill, Laura Smyth.
Publication Date	Thursday 18th February 2016
Reporting Period	Academic Years 2005/06 to 2014/15
Publication Issue	19
Statistical Quality	Information detailed in this release has been quality assured with the Higher Education Statistics Authority (HESA) prior to release.
Target audience	Department for Employment and Learning (DEL), Directors of HE Institutions in Northern Ireland, Board members of HE Institutions, educational professionals, academics, media and members of the public interested in the HE sector.
Further copies from	<a href="mailto:analyticalservices@delni.gov.uk">analyticalservices@delni.gov.uk</a>
Internet address	<a href="http://www.delni.gov.uk/higher-education-stats">http://www.delni.gov.uk/higher-education-stats</a>
Price	Free
Copyright	This publication is Crown copyright and may be reproduced free of charge in any format or medium. Any material used must be acknowledged, and the title of the publication specified.
Feedback	<p>As we want to engage with users of our statistics, we invite you to feedback your comments on this publication to:</p> <p>Andrew Bannon or Kerry McColgan Email: <a href="mailto:Andrew.Bannon@delni.gov.uk">Andrew.Bannon@delni.gov.uk</a> or <a href="mailto:Kerry.McColgan@delni.gov.uk">Kerry.McColgan@delni.gov.uk</a></p> <p>Tel: (028) 90 257895 or (028) 90 257753</p>

## TABLE OF CONTENTS

<a href="#">Reader Information</a> .....	Page 2
<a href="#">Table of Contents</a> .....	Page 3
<a href="#">List of Figures</a> .....	Page 4
<a href="#">Statistics and Research Branch</a> .....	Page 5
<a href="#">Key Statistics</a> .....	Page 6
<a href="#">Introduction</a> .....	Page 8
<a href="#">Structure of Report</a> .....	Page 11
<b>Section 1: Northern Ireland domiciled students gaining Higher Education qualifications at UK Higher Education Institutions</b> .....	Page 12
<a href="#">Change over last 10 years</a> .....	Page 12
<a href="#">Breakdown of Qualifications gained</a> .....	Page 13
<a href="#">Multiple Deprivation Measure quintiles</a> .....	Page 16
<a href="#">Subject of study</a> .....	Page 16
<a href="#">Classification of First Degree</a> .....	Page 18
<b>Section 2: Students gaining Higher Education qualifications at Northern Ireland Higher Education Institutions</b> .....	Page 19
<a href="#">Change over last 10 years</a> .....	Page 19
<a href="#">Breakdown of Qualifications gained</a> .....	Page 20
<a href="#">Subject of study</a> .....	Page 23
<a href="#">Classification of first degree</a> .....	Page 25
<a href="#">Institutional breakdown</a> .....	Page 25
<a href="#">UK comparison</a> .....	Page 27
<a href="#">Notes and definitions</a> .....	Page 29
<a href="#">List of Tables</a> .....	Page 34
<a href="#">Annex A: Tables</a> .....	Page 39
<a href="#">Annex B: Tables based on HESA's change in methodology</a> .....	Page 66

## LIST OF FIGURES

- [Figure 1](#): NI domiciled students gaining HE qualifications at UK HEIs - 2005/06 to 2014/15.....Page 12
- [Figure 2](#): NI domiciled students gaining HE qualifications at UK HEIs by location of study and level of qualification - 2014/15.....Page 14
- [Figure 3](#): NI domiciled students gaining HE qualifications at UK HEIs by mode of study and multiple deprivation measure quintile – 2014/15.....Page 16
- [Figure 4](#): NI domiciled students gaining HE qualifications at UK HEIs by gender and subject area - 2014/15.....Page 17
- [Figure 5](#): NI domiciled students gaining first degree qualifications at UK HEIs by classification - 2014/15.....Page 18
- [Figure 6](#): Qualifications gained at NI HEIs - 2005/06 to 2014/15.....Page 19
- [Figure 7](#): Students gaining HE qualifications at NI HEIs by level of qualification and gender - 2014/15.....Page 21
- [Figure 8](#): Students gaining HE qualifications at NI HEIs by subject and level of qualification - 2014/15.....Page 24
- [Figure 9](#): Students gaining first degree qualifications from NI HEIs by classification and gender - 2014/15.....Page 25
- [Figure 10](#): Students gaining HE qualifications at NI HEIs by year and institution - 2009/10 to 2014/15.....Page 26
- [Figure 11](#): Percentage change in qualifications gained at UK HEIs by level of qualification and location of institution - 2013/14 to 2014/15.....Page 28

Statistics & Research Branch is responsible for the collection, quality assurance, analysis and publication of timely and accurate information derived from a wide range of statistical information returns supplied by the further education colleges across Northern Ireland and the Higher Education Statistics Agency (HESA) focused on Northern Ireland Higher Educational Institutions and Northern Ireland domicile students in attendance at any UK Higher Educational Institution. Statistical information is collected routinely from a variety of electronic individual level administrative system.

The Head of the Branch is the Principal Statistician, Mrs. Laura Smyth. The Branch aims to present information in a meaningful way and provide advice on its uses to customers in the DEL Committee, Further Education Colleges, Universities, Professional Advisory Groups, policy branches within the DEL, other educational organisations, academia, private sector organisations, charity/voluntary organisations as well as the general public.

The statistical information collected is used to contribute to major exercises such as reporting on the performance of the Higher Education and Further Education sectors, other comparative performance exercises, target setting and monitoring, departmental research projects, development of service frameworks as well as policy formulation and evaluation. In addition, the information is used in response to a significantly high volume of Assembly questions and ad-hoc queries each year.

Information is disseminated through a number of key statistical publications, including: Higher Education enrolments, Higher Education qualifications, Destinations of leavers from Higher Education, Further Education activity, Essential Skills enrolments and outcomes, to name but a few.

A detailed list of these publications is available from:

**Website:** <https://www.delni.gov.uk/publications/type/statisticalreports>

## KEY STATISTICS FOR NORTHERN IRELAND DOMICILED QUALIFIERS IN UK HEIs

**We have a similar number of qualifiers.....**

Although fluctuating over the past ten academic years, the number of NI domiciled qualifiers from UK HEIs has decreased by 2.0% from 18,425 in 2005/06 to 18,065 in 2014/15 and by 0.5% from the 2013/14 figure of 18,150.

**...but fewer graduating from Northern Ireland Institutions.**

The number of qualifications gained by NI students at NI Institutions has decreased by 5.3% from 13,130 in 2005/06 to 12,435 in 2014/15. In 2014/15 qualifications gained by NI students at NI Institutions accounted for 68.8% of all NI domiciled qualifications compared to 71.3% in 2005/06.

**The vast majority are from full time courses.....**

Of the 18,065 qualifications gained in 2014/15, 76.8% were through full-time study and 23.2% through part-time study.

**....with more qualifying at First Degree level.**

First Degree qualifications have experienced the largest percentage increase, rising by 13.0% over the last ten years (10,365 to 11,715). 'Postgraduate' qualifications have increased by 1.5% from 4,365 to 4,430. In contrast, the number of qualifications gained by students enrolled on 'other undergraduate' courses has decreased by 48.1% (3,695 to 1,920).

**More females qualifying than males.....**

In 2014/15, of the 18,065 NI domiciled students gaining qualifications, 58.5% were female and 41.5% were male. Of male students gaining a qualification, 78.7% were studying full-time compared to 75.5% of females.

**.....and there is variation in gender, in terms of the course subject area.**

Females accounted for 83.6% of qualifications gained in 'subjects allied to medicine', 71.9% of those gained in 'education' and 69.3% of those gained in 'languages' in 2014/15. Male-dominated subject areas included 'engineering & technology' (82.9%), 'computer science (75.0%) and 'architecture, building & planning (67.2%).

**A higher proportion of males qualified in a STEM subject.....**

During 2014/15, 46.1% of qualifications gained by NI domiciled students at UK HEIs were in a Broad STEM related subject. A higher proportion of males (50.0%) than females (43.4%) gained their qualification in a Broad STEM related subject.

Just over a fifth (22.3%) of qualifications gained by NI domiciled students at UK HEIs were in a Narrow STEM related subject. Again a higher proportion of males (33.4%) than females (14.5%) gained their qualification in a Narrow STEM related subject.

**.....but a higher proportion of females graduated with a first class or second class upper degree.**

In 2014/15, 73.0% of NI domiciled 'first degree' graduates (excluding the attaining an unclassified 'first degree') achieved either a first class or upper second class honours degree.

Females (75.2%) were more likely than males (70.1%) to achieve a first class or upper second class honours degree.

## KEY STATISTICS FOR QUALIFIERS FROM NORTHERN IRELAND INSTITUTIONS

**We have a similar number of qualifiers.....**

Although fluctuating over the past ten academic years, the number of qualifications gained at NI HEIs has decreased by 0.8% from 16,130 in 2005/06 to 16,010 in 2014/15, but increased by 0.6% from the 2013/14 figure of 15,910.

**...but fewer Northern Ireland domiciled graduates.**

The number of qualifications gained by NI students at NI Institutions has decreased by 6.4% from 13,810 in 2005/06 to 12,930 in 2014/15. In 2014/15 qualifications gained by NI students at NI Institutions accounted for 80.8% of all NI HEIs qualifications compared to 85.6% in 2005/06.

**The vast majority are from full time courses.....**

Of the 16,010 qualifications gained in 2014/15, 72.8% were through full-time study and 27.2% through part-time study.

**....and at First Degree level.**

Of the 16,010 qualifications gained by students at NI HEIs, 9,290 (58.0%) obtained a 'first degree' qualification, 1,975 (12.3%) an 'other undergraduate' qualification and 4,750 (29.7%) obtained a 'postgraduate' qualification.

**More females qualifying than males.....**

In 2014/15, of students gaining qualifications at NI HEIs, 58.3% were female and 41.7% were male. Of male students gaining a qualification, 76.6% were studying full-time compared to 70.1% of females.

**.....and there is variation in gender, in terms of the course subject area.**

Females accounted for 84.5% of qualifications gained in 'subjects allied to medicine', 71.4% of those gained in 'education' and 71.3% of those gained in 'languages' in 2014/15. Male-dominated subject areas included 'engineering & technology' (80.1%), 'computer science (76.2%) and 'architecture, building & planning (66.4%).

**A higher proportion of males qualified in a STEM subject.....**

During 2014/15, 45.9% of qualifications gained by students at NI HEIs were in a Broad STEM related subject. A higher proportion of males (48.3%) than females (44.2%) gained their qualification in a Broad STEM related subject. Just over a fifth (21.9%) of qualifications gained by students at NI HEIs, were in a Narrow STEM related subject. Again a higher proportion of males (32.5%) than females (14.3%) gained their qualification in a Narrow STEM related subject.

**.....but a higher proportion of females graduated with a first class or second class upper degree.**

In 2014/15, 71.2% of 'first degree' graduates (excluding those attaining an unclassified 'first degree') achieved either a first class or upper second class honours degree.

Females (74.1%) were more likely than males (67.5%) to achieve a first class or upper second class honours degree.



The United Kingdom Statistics Authority has designated these statistics as National Statistics, in accordance with the Statistics and Registration Service Act 2007 and signifying compliance with the Code of Practice for Official Statistics. Designation can be broadly interpreted to mean that the statistics: meet identified user needs; are well explained and readily accessible; are produced according to sound methods, and are managed impartially and objectively in the public interest. Once statistics have been designated as National Statistics it is a statutory requirement that the [Code of Practice](#) shall continue to be observed.

### Coverage

This statistical bulletin has been produced by the Department for Employment and Learning (DEL), Northern Ireland (NI) and presents information on Higher Education (HE) qualifications gained by NI domiciled students at Higher Education Institutions (HEIs) in the UK in the 2014/15 academic year, and by all students at NI HEIs in the same time period. The statistics presented in this bulletin cover a range of topics including changes over the last ten years, mode and level of study, subject of study and classification of first degree.

### Policy and Operational Context

The Minister for Employment and Learning has responsibility within the NI Executive and to the NI Assembly for the NI Higher Education Institutions (HEIs) and their students; and for student support for NI-domiciled students in NI and the rest of the UK. The Assembly's DEL Committee has a scrutiny role in regard to these issues.

There continues to be a lot of media interest in the HE sector and HE statistics. With changes in fee regimes throughout the UK and the effect of the economic recession, the demand for HE is often in the spotlight.

It is within this context that DEL is implementing 'Graduating to Success', its Higher Education strategy which aims to promote and sustain the development of an internationally competitive sector, accessible to all who are able to benefit, and meeting the needs of the Northern Ireland economy and wider society. This bulletin forms part of the evidence base which shapes the future strategies and policies of DEL.

### Data Collection

The information presented in this statistical bulletin is based on data supplied by the Higher Education Statistics Agency (HESA). HESA is the official agency for the collection of information on publicly funded Higher Education (HE) institutions in the UK. It was set up in 1993 following the White Paper 'Higher Education: a new framework', which called for more coherence in HE statistics. HE institutions include all publicly-funded universities. The HESA data presented in this bulletin relate to students at HE institutions in the UK and therefore do not include HE enrolments at FE colleges in NI or GB, or at institutions in the Republic of Ireland.



## Rounding Strategy

To prevent the identification of individuals, figures throughout the report are rounded to the nearest 5, with 0, 1, and 2 rounded to 0. Due to rounding the sum of numbers in each row or column may not match the total shown. Percentages are based on unrounded figures. Percentages have also been rounded to one decimal place.

<https://www.hesa.ac.uk/component/content/article?id=146&limit=&start=0>

## Data Quality

All information presented in this bulletin has been validated and quality assured by HE institutions prior to publication. HE institutions are given a set period of time to submit the information to the Higher Education Statistics Agency (HESA). Following submission, both HESA and DEL perform a series of validation checks to ensure that information is consistent both within and across returns. Trend analyses are used to monitor annual variations and emerging trends. Queries arising from validation checks are presented to HE institutions for clarification and if required, returns may be amended and/or re-submitted. Finally, prior to publication of this information the data is presented to HE institutions for a final sign-off. More detail on the Quality of the Higher Education statistics is available via the link [Quality of Higher Education Statistics](#).

## Who will be interested in this bulletin?

The information presented in this statistical bulletin will be of interest to a wide variety of people. For example the statistics within and those derived from this bulletin are currently used by DEL policy officials in their role of assisting and advising the Minister for Employment and Learning to discharge his duties; by the NI Assembly and DEL committee to scrutinise the HE sector; by prospective students to inform their choices around higher education; by local businesses to quantify the supply of graduates in their business area and by researchers and academics to try and understand the underlying trends in HE. Further details about the uses made of HE statistics can be found in the [notes and definitions](#) section.

## Main Uses of HE statistics

The main uses of these data are to monitor Higher Education qualifications and the characteristics of student's qualifying both from Northern Ireland and to Northern Ireland Higher Education Institutions. This helps assess the HE institution performance, corporate monitoring, informing and monitoring related policy, and responding to parliamentary/assembly questions and ad-hoc queries from the public.

The Department for Employment and Learning (DEL) is responsible for the policy, strategic development and financing of the statutory HE sector. Analysis of data trends against key strategic priorities remain a crucial component of data development within DEL.

## HE Activity Elsewhere

Summary figures for the four UK administrations were published by HESA in their Statistical First Release on 14<sup>th</sup> January 2016.

This statistical first release can be viewed at the following page -

<https://www.hesa.ac.uk/sfr224>

More in depth reports for England, Scotland and Wales can be downloaded from the following pages:

England - <http://www.bis.gov.uk/policies/higher-education/research-analysis>

Scotland - <http://www.scotland.gov.uk/Topics/Statistics/Browse/Lifelong-learning>

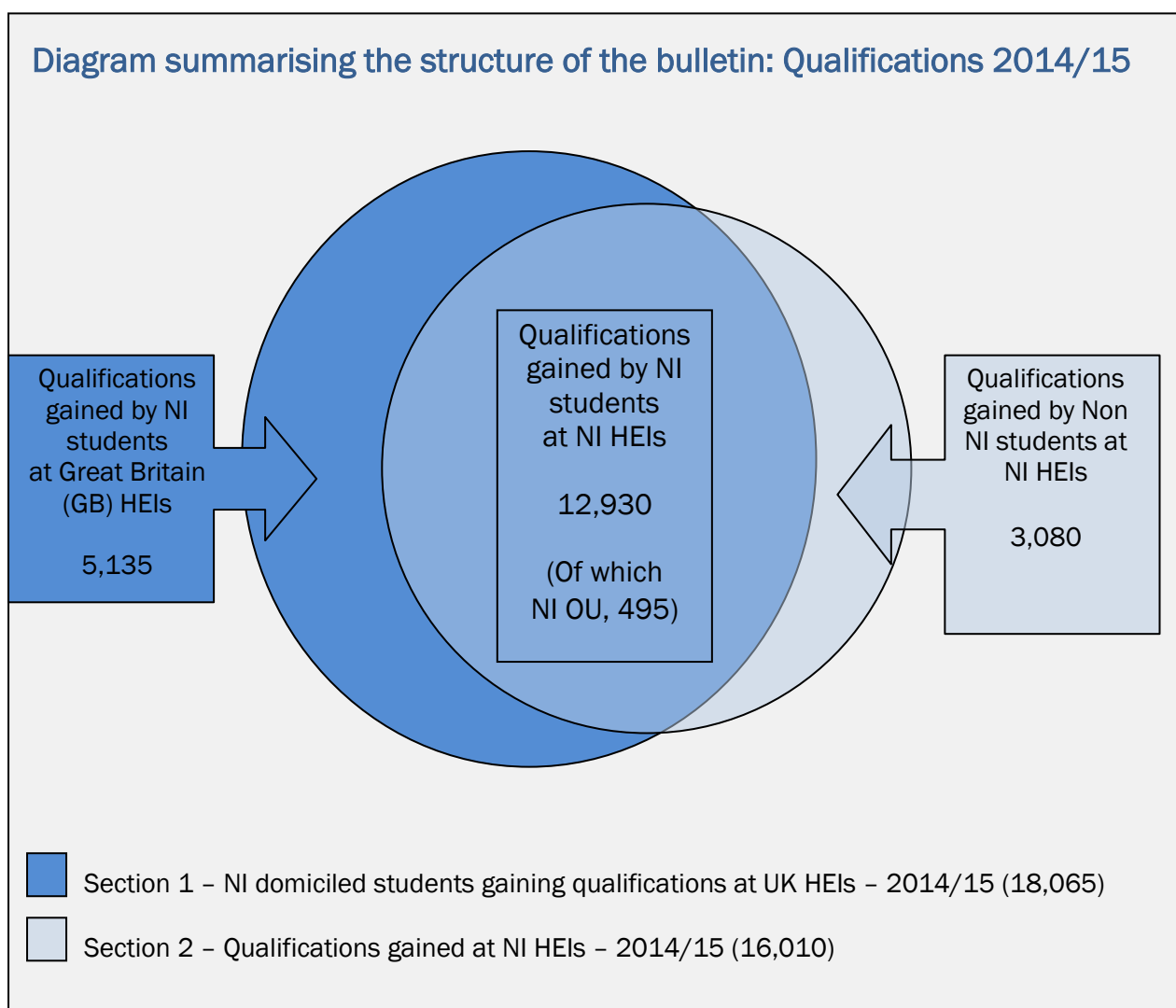
Wales - <http://wales.gov.uk/topics/statistics/theme/post16ed/higher-educa>

## STRUCTURE OF REPORT

The bulletin is divided into two sections. Section 1 focuses on NI domiciled students gaining qualifications at HEIs in NI, England, Scotland or Wales. Section 2 concentrates on all students gaining qualifications at NI HEIs. This division into two sections reflects the two distinct policy and operational responsibilities of the Minister and the Department. Furthermore, it is clear from customer feedback, the nature of questions on HE asked in the Northern Ireland Assembly, and coverage of HE issues in the local media, for example, that these two aspects are of interest to readers. Therefore it has been decided to present breakdowns of information on HE along these two dimensions in this bulletin.

It is worth noting that there is a large overlap between Section 1 and Section 2, namely qualifications gained by NI students enrolled at NI HEIs are included in both sections of the bulletin. See the diagram below for details:

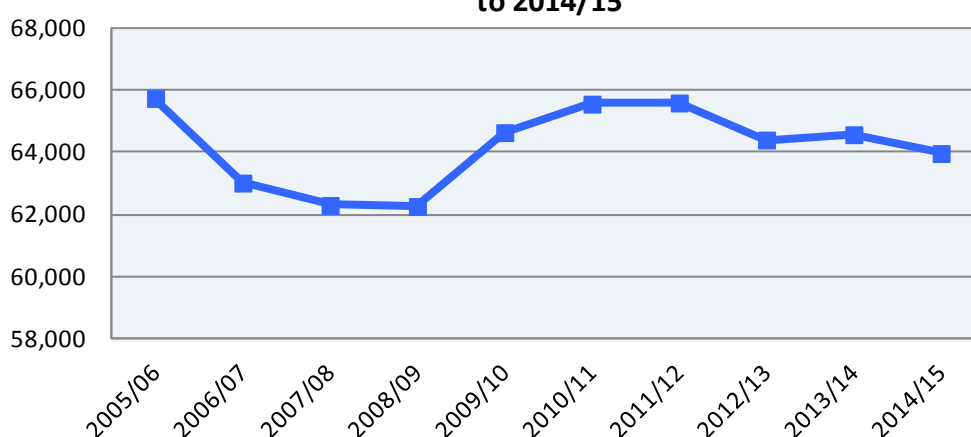
Diagram summarising the structure of the bulletin: Qualifications 2014/15



### 1.1 Change over the last 10 years – 2005/06 to 2014/15 (Tables 1 to 1f, Figure 1)

The number of qualifications gained by NI domiciled students at HEIs in NI, England, Scotland and Wales decreased by 2.0% over the past 10 years from 18,425 to 18,065. However, figure 1 illustrates that in between these years the numbers have varied. From 2005/06 the number of qualifications gained fluctuated, reaching a low of 17,440 in 2008/09 before peaking at 18,750 in 2011/12 and 2012/13. The number then decreased year on year, most recently falling by 0.5% between 2013/14 (18,150) and 2014/15 (18,065) in 2014/15 (Tables 1a, 1b and 1c).

**Figure 1 - NI domiciled students enrolled at UK HEIs - 2005/06 to 2014/15**



Over the 10 year period the number of NI students gaining qualifications at GB HEIs has steadily increased from 4,615 to 5,135, an overall increase of 11.2%. The number of qualifications gained by NI students through the Open University decreased by 26.8%, from 680 to 495 over the same period, and qualifications gained by NI students at NI HEIs decreased from 13,130 in 2005/06 to 12,435 in 2014/15, a drop of 5.3% (Tables 1a and 1b).

Proportionately more NI students now leave NI to study in GB than did a decade ago<sup>1</sup>. This has had the effect of increasing the proportion of NI students gaining qualifications at GB HEIs from 25.1% (4,615) in 2005/06 to 28.4% (5,135) in 2014/15 (Table 1a).

In terms of the level of qualification gained by NI Domiciled students at UK HEIs, 'first degree' qualifications have experienced the largest percentage increase, rising by 13.0% over the last ten years from 10,365 to 11,715. 'Postgraduate' qualifications have increased by 1.5% from 4,365 to 4,430 over the same period. In contrast, the number of qualifications gained by students enrolled on 'other undergraduate' courses (such as foundation degrees, diplomas, HNDs and HNCs) has decreased from 3,695 in 2005/06 to 1,920 in 2014/15, a fall of 48.1% (Tables 1d and 1e).

<sup>1</sup> See [2014/15 Higher Education Enrolments bulletin](#).

The number of qualifications gained by NI Domiciled students at UK HEIs from full-time study rose by 10.6% over the decade, from 12,545 to 13,880 compared to a 28.9% decrease in qualifications gained from part-time study (5,880 to 4,185) (Table 1a and 1b).

## **1.2 Breakdown of Qualifications gained – 2014/15 (Tables 1f to 2f, Figures 1 and 2)**

### **All Higher Education Qualifications**

In 2014/15, 18,065 qualifications were gained by NI domiciled students at UK HEIs; a 2.0% decrease from 18,150 in 2013/14 (Tables 1a and 1c).

Mode of study – Of the 18,065 qualifications gained in 2014/15, 76.8% were through full-time study and 23.2% through part-time study (Table 2b).

In comparison to 2013/14, the number of full-time students gaining qualifications decreased by 0.1%, from 13,895 to 13,880 in 2014/15 and part-time qualifiers decreased by 1.7% from 4,255 to 4,185 over the same period (Tables 1a and 1c).

Gender – In 2014/15, of the 18,065 NI domiciled students gaining qualifications, 58.5% were female and 41.5% were male. This is broadly reflective of the gender differences in NI Domiciled enrolments<sup>2</sup> at UK HEIs. Of the 7,490 male students gaining a qualification, 78.7% were studying full-time and 21.3% part-time compared to 75.5% full-time and 24.5% part-time for females (10,575) (Tables 2e and 2f).

The majority of males (65.8%) gained a ‘first degree’; while 10.5% gained an ‘other undergraduate’ qualification and 23.8% obtained a ‘postgraduate’ qualification. This compares to 64.2%, 10.7% and 25.1% for females respectively (Table 2d).

Location of study – In 2014/15 of the 18,065 NI domiciled students gaining a qualification, 68.8% studied at a NI HEI, 28.4% at a GB HEI and 2.7% through the Open University (Table 2c).

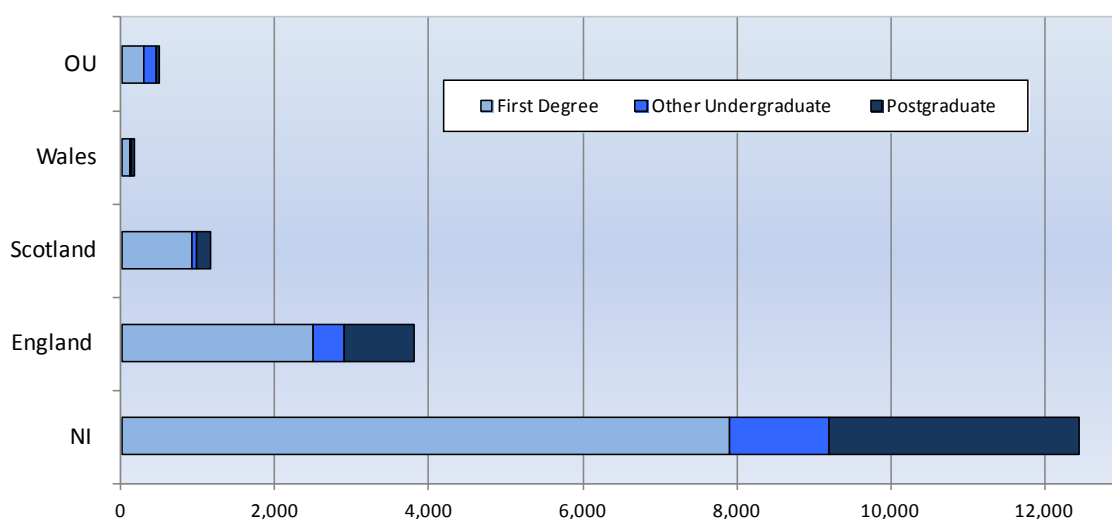
Of the 12,435 NI students gaining qualifications at NI HEIs, 74.8% were through full-time study and 25.2% through part-time study. This compares to 89.2% through full-time study and 10.8% through part-time study for those at GB HEIs (5,135) while those gained at the Open University were all through part-time study (495) (Table 2b).

Level of Qualification - Of the 18,065 qualifications gained by NI domiciled students at UK HEIs, 11,715 (64.9%) obtained a ‘first degree’ qualification, 1,920 (10.6%) an ‘other undergraduate’ qualification and 4,430 (24.5%) obtained a ‘postgraduate’ qualification (Table 1d).

---

<sup>2</sup> See [2014/15 Higher Education Enrolments bulletin](#)

**Figure 2 : NI domiciled students gaining HE qualifications at UK HEIs by location of study and level of qualification - 2014/15**



### First Degree Qualifications

In 2014/15, 11,715 ‘first degree’ qualifications were gained by NI domiciled students at UK HEIs; a decrease of 0.8% from the 2013/14 figure of 11,810 (Tables 1d and 1f).

Mode of study – Of the 11,715 ‘first degree’ qualifications gained in 2014/15, 91.7% were through full-time study and 8.3% through part-time study (Table 2b).

In comparison to 2013/14, the number of full-time students gaining ‘first degree’ qualifications decreased by 1.3% from 10,885 to 10,745 in 2014/15, while part-time numbers increased by 5.0% from 925 to 970 over the same period (Tables 1d and 1f).

Gender – In 2014/15, of the 11,715 NI domiciled students gaining ‘first degree’ qualifications, 58.0% were female and 42.0% were male. Of the 4,925 male students gaining a ‘first degree’ qualification, 91.1% were studying full-time and 8.9% part-time. Of the 6,790 female students gaining a ‘first degree’ qualification, 92.1% were studying full-time and 7.9% part-time (Tables 2e and 2f).

Location of study – In 2014/15, of the 11,715 NI domiciled students gaining a ‘first degree’ at a UK HEI, 67.4% studied at a NI HEI, 30.0% at a GB HEI and 2.6% through the Open University (Table 2c).

Of the 7,900 NI students gaining a ‘first degree’ at a NI HEI, 92.7% were studying full-time and 7.3% part-time. This compares to 97.5% full-time and 2.5% part-time for those at GB HEIs (3,515) while those gaining a ‘first degree’ at Open University were all studying part-time (300) (Table 2b).

## Other Undergraduate Qualifications

In 2014/15, 1,920 'other undergraduate' qualifications were gained by NI domiciled students at UK HEIs; a decrease of 3.1% from the 2013/14 figure of 1,980 (Tables 1d and 1f).

Mode of study – Of the 1,920 'other undergraduate' qualifications gained in 2014/15, 37.7% were through full-time study and 62.3% were through part-time study (Table 2b).

In comparison to 2013/14, the number of full-time students gaining 'other undergraduate' qualifications increased by 4.9% from 690 to 725 in 2014/15, while part-time numbers decreased by 7.4% from 1,290 to 1,195 over the same period (Tables 1d and 1f).

Gender – In 2014/15, of the 1,920 NI domiciled students gaining 'other undergraduate' qualifications, 59.1% were female and 40.9% were male. Of the 785 male students gaining an 'other undergraduate' qualification, 48.4% were studying full-time and 51.6% part-time compared to 30.3% full-time and 69.7% part-time for females (1,135) (Tables 2e and 2f).

Location of study – In 2014/15, of the 1,920 NI domiciled students gaining 'other undergraduate' qualifications at UK HEIs, 67.2% studied at a NI HEI, 25.2% at a GB HEI and 7.7% through the Open University (Table 2c).

Of the 1,290 NI students gaining 'other undergraduate' qualifications at NI HEIs, 29.2% were studying full-time and 70.8% were studying part-time. This compares to 71.8% studying full-time and 28.2% studying part-time for those at GB HEIs (485) while those gaining 'other undergraduate' qualifications at the Open University were all studying part-time (145) (Table 2b).

## Postgraduate Qualifications

In 2014/15, 4,430 'postgraduate' qualifications were gained by NI domiciled students at UK HEIs; an increase of 1.6% from the 2013/14 figure of 4,360 (Tables 1d and 1f).

Mode of study – Of the 4,430 'postgraduate' qualifications gained in 2014/15, 54.4% were through full-time study and 45.6% were through part-time study (Table 2b).

In comparison to 2013/14, the number of full-time students gaining 'postgraduate' qualifications increased by 4.1% from 2,315 to 2,410 in 2014/15, while part-time numbers decreased by 1.1% from 2,040 to 2,020 over the same period (Tables 1d and 1f).

Gender – In 2014/15, of the 4,430 NI domiciled students gaining 'postgraduate' qualifications, 59.8% were female and 40.2% were male. Of the 1,780 male students gaining 'postgraduate' qualifications, 57.6% were studying full-time and



42.4% part-time, compared to 52.3% full-time and 47.7% part-time for females (2,650) (Tables 2e and 2f).

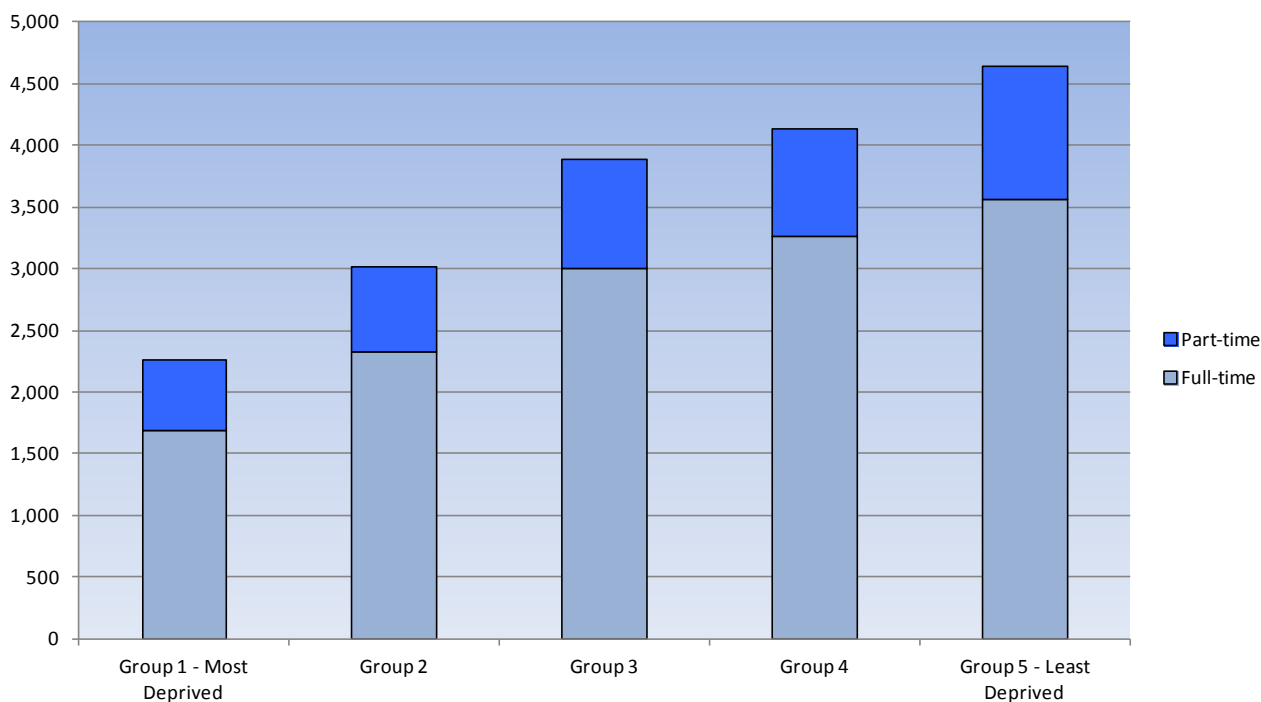
Location of study – In 2014/15, of the 4,430 NI domiciled students gaining ‘postgraduate’ qualifications at UK HEIs, 73.2% studied at a NI HEI, 25.7% at a GB HEI and 1.1% through the Open University (Table 2c).

Of the 3,245 NI students gaining ‘postgraduate’ qualifications at NI HEIs, 49.5% had studied full-time and 50.5% had studied part-time. This compares to 70.8% that studied full-time and 29.2% that studied part-time for those at GB HEIs (1,135) while those gaining ‘postgraduate’ qualifications at Open University had all studied part-time (50) (Table 2b).

### 1.3 Multiple Deprivation Measure quintiles 2014/15 (Tables 3 to 3d, Figure 3)

Of the 17,935 NI domiciled students gaining qualifications at UK HEIs in 2014/15, the highest proportion (25.9%) were from the least deprived multiple deprivation area in NI (quintile 5), whereas only 12.6% were from the most deprived multiple deprivation area (quintile 1).

**Figure 3: NI domiciled students gaining HE qualifications at UK HEIs by mode of study and multiple deprivation measure quintile - 2014/15**



### 1.4 Subject of Study 2014/15 (Tables 4 to 4d, Figure 4)

The most popular subject groups for NI students gaining qualifications at UK HEIs in 2014/15 were ‘subjects allied to medicine’ (14.9%), ‘business and administrative studies’ (12.8%) and ‘education’ (11.7%) (Table 4a).

Females accounted for 83.6% of qualifications gained in ‘subjects allied to medicine’, 71.9% of those gained in ‘education’ and 69.3% of those gained in ‘languages’ (Table 4c).

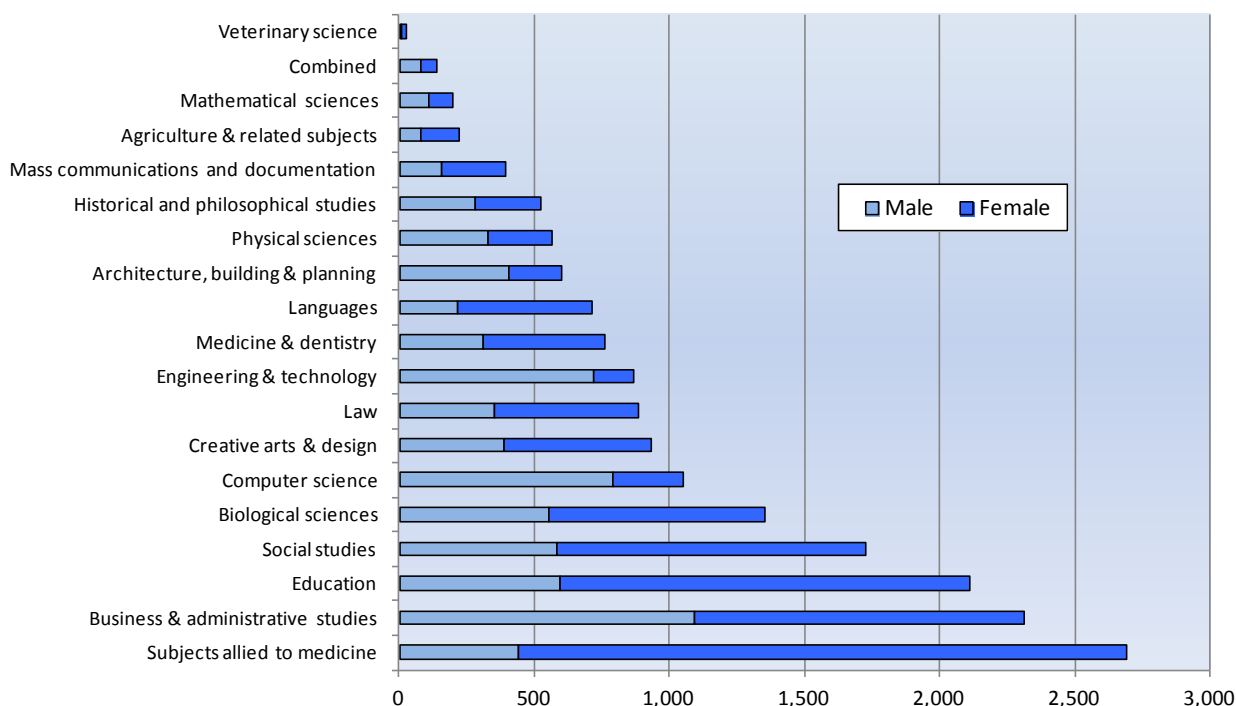
Males accounted for 82.9% of qualifications gained in ‘engineering & technology’, 75.0% of ‘computer science’ qualifications and 67.2% of ‘architecture, building & planning’ qualifications (Table 4c).

The most popular subject groups for those NI students attaining a *‘first degree’* qualification at UK HEIs were ‘subjects allied to medicine’ (15.6%), ‘business and administrative studies’ (12.8%) and ‘social studies’ (10.0%) (Table 4a).

For NI students attaining an *‘other undergraduate’* qualification at UK HEIs, the three most popular subject groups were ‘subjects allied to medicine’ (21.4%), ‘business and administrative studies’ (21.0%) and ‘education’ (19.4%) (Table 4a).

For those NI domiciled students attaining a *‘postgraduate’* qualification at UK HEIs, the three most popular subject groups were ‘education’ (25.0%), ‘subjects allied to medicine’ (10.3%) and ‘social studies’ (9.7%) (Table 4a).

**Figure 4 : NI domiciled students gaining HE qualifications at UK HEIs by gender and subject area - 2014/15**



The key priority identified within the Programme for Government by the NI Executive is to grow a sustainable economy and invest in the future. To help achieve this, a target has been set to increase the uptake in economically relevant Science, Technology, Engineering and Mathematics (STEM<sup>3</sup>) places in education.

<sup>3</sup> Science, Technology, Engineering and Maths – see notes to readers for full description.

In 2014/15, 46.1% of qualifications gained by NI domiciled students at UK HEIs were in a Broad STEM related subject. A higher proportion of males than females gained their qualification in a Broad STEM related subject, 50.0% compared to 43.4%. Of 'first degree' qualifications gained, 49.7% were in Broad STEM related subjects, compared to 41.0% for 'other undergraduates' and 39.1% for 'postgraduates' (Tables 4b and 4d).

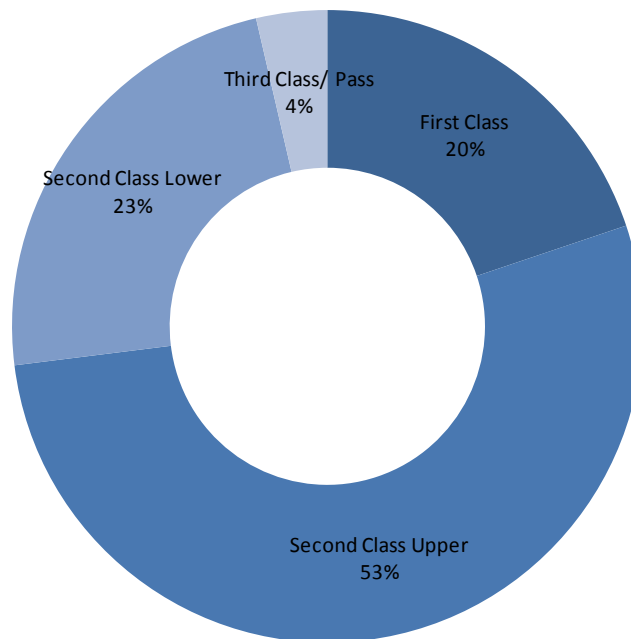
In 2014/15, 22.3% of qualifications gained by NI domiciled students at UK HEIs were in a Narrow STEM related subject. A higher proportion of males than females gained their qualification in a Narrow STEM related subject, 33.4% compared to 14.5%. Of 'first degree' qualifications gained, 25.1% were in Narrow STEM related subjects, compared to 17.4% for 'other undergraduates' and 17.1% for 'postgraduates' (Tables 4b and 4d).

### 1.5 Classification of first degree<sup>4</sup> (Tables 5 to 5b, Figure 5)

In 2014/15, 73.0% (8,085) of NI domiciled 'first degree' graduates (excluding those 645 attaining an unclassified 'first degree') achieved either a first class or upper second class honours degree (Table 5a and 5b).

Females (75.2%) were more likely than males (70.1%) to achieve a first class or upper second class honours degree (Table 5b).

**Figure 5: NI domiciled students gaining first degree qualifications at UK HEIs by classification - 2014/15**



<sup>4</sup> See notes and definitions point 15

## Section 2: Students gaining Higher Education Qualifications at Northern Ireland Higher Education Institutions (Tables 6 to 11b)

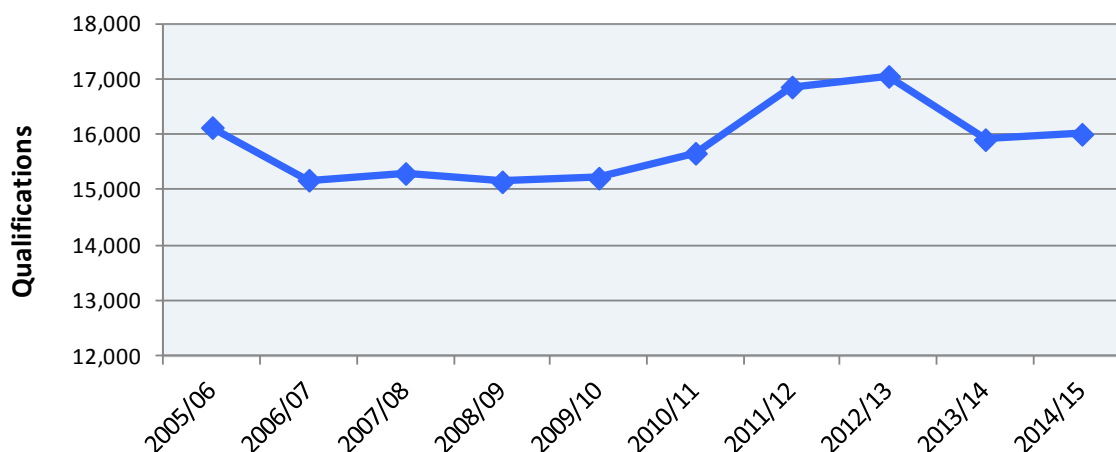
This bulletin incorporates changes that the Higher Education Statistics Agency (HESA) made to the allocation of Open University (OU) students in the 2013/14 student record. This means that enrolments and qualifications registered at one of the OU's national centres in Wales, Scotland and Northern Ireland will now contribute to the totals of those countries, where statistics are shown by country of provider. Previously all OU enrolments and qualifications were counted as being within England, where the OU has its administrative centre.

The Department for Employment and Learning (DEL) has adopted this new methodology going forward from 2014/15. In addition, any historical data affected by this change in methodology now reflects the new allocation method for OU.

### 2.1 Change over the last 10 years – 2005/06 to 2014/15 (Tables 6 to 6f, Figure 6)

Over the last ten years the total number of qualifications gained by students at NI HEIs has decreased by 0.8% from 16,130 to 16,010. Figure 6 below illustrates the pattern of the change in qualifications gained over this period. Qualifications fell from 2005/06 to 15,180 in 2006/07, a sharp decline of approximately 1,000 qualifications. This was followed by a “levelling off” period from 2007/08 to 2009/10 where qualifications gained were between 15,000 and just over 15,500 in each academic year. Qualifications then increased to a high of 17,055 in 2012/13, before decreasing by 6.7% to 15,910 in 2013/14. The number of qualifications then rose by 0.6% in 2014/15 to 16,010 (Tables 6a, 6b and 6c).

**Figure 6 - Qualifications gained at NI HEIs - 2005/06 to 2014/15**



Qualifications gained by students from NI now make up a smaller proportion of the total number of qualifications gained at NI HEIs than they did 10 years ago. In 2005/06 qualifications gained by students from NI accounted for 85.6% (13,810) of the total number of qualifications gained at NI HEIs. In 2014/15 this proportion has decreased to 80.8% (12,930). Over this period NI HEIs have seen an increase in qualifications gained by students from outside NI, increasing from 2,320 in 2005/06 to 3,080 in 2014/15, a rise of 32.7%. This is broadly reflective of the

enrolment<sup>5</sup> breakdown at NI HEIs with a higher proportion from outside NI in 2014/15 than in 2005/06 (Tables 6a and 6b).

In terms of level of qualification, 'First degree' qualifications increased by 12.2% from 8,275 to 9,285 over the 10 year period. 'Postgraduate' qualifications increased by 8.1% from 4,390 to 4,750, while the number of qualifications gained by students on 'other undergraduate' courses (such as foundation degrees, diplomas, HNDs and HNCs) decreased from 3,460 in 2005/06 to 1,975 in 2014/15, a fall of 43.0% (Tables 6d and 6e).

The number of full-time qualifications gained has increased by 15.7% from 10,075 to 11,660 over the last 10 years, while part-time qualifications gained have decreased by 28.1% from 6,055 to 4,350 over the same period (Tables 6b).

## **2.2 Breakdown of Qualifications gained – 2014/15 (Tables 6a and 7f, Figures 6 and 7)**

### **All Higher Education Qualifications**

In 2014/15, 16,010 qualifications were gained by students at NI HEIs; an increase of 0.6% from the 2013/14 figure of 15,910 (Tables 6a and 6c).

Mode of study – Of the 16,010 qualifications gained in 2014/15, 72.8% were through full-time study and 27.2% were through part-time study (Table 7b).

In comparison to 2013/14 the number of full-time students gaining qualifications increased by 2.2% from 11,410 to 11,660 in 2014/15 while part-time numbers decreased by 3.3% from 4,500 to 4,350 over the same period (Table 6a and 6c).

Gender – In 2014/15, of the 16,010 students gaining qualifications at NI HEIs, 58.3% were female and 41.7% were male. This is broadly reflective of the gender differences in enrolments<sup>6</sup> at NI HEIs. Of the 6,675 male students gaining a qualification, 76.6% were studying full-time and 23.4% part-time compared to 70.1% full-time and 29.9% part-time for females (9,330) (Table 7e and 7f).

The majority of males (60.0%) gained a 'first degree'; while 28.0% obtained a 'postgraduate' qualification and 12.0% gained an 'other undergraduate' qualification. The breakdown for females was 56.6%, 30.9% and 12.6% respectively (Table 7d).

Domicile – In 2014/15, of the 16,010 students gaining a qualification at NI HEIs, 80.8% were from NI, 9.0% from Non EU countries, 5.4% from ROI, 4.2% from GB and 0.7% from other EU countries (Table 7c).

Of the students from NI gaining qualifications at NI HEIs (12,930), 72.0% were full-time and 28.0% part-time. This compares to 97.6% full-time and 2.4% part-time for students from non EU countries (1,435), 66.9% full-time and 33.1% part-time for students from the ROI (865) and 41.9% full-time and 58.1% part-time for students from GB (665). For students from other EU countries (110) 84.7% qualified through full-time study and 15.3% part-time (Table 7b).

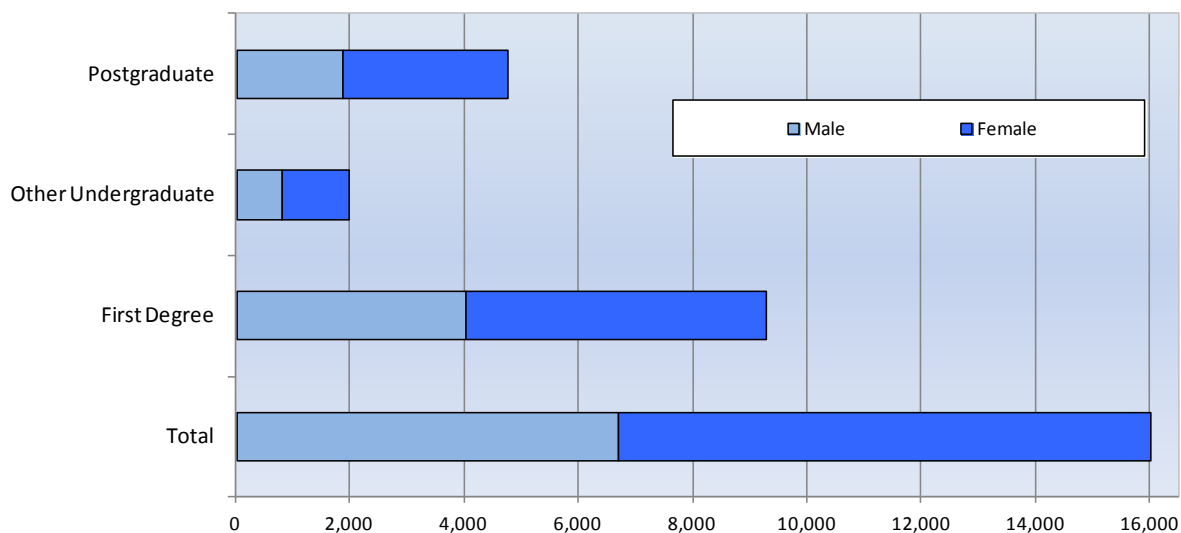
---

<sup>5</sup> See [2014/15 Higher Education Enrolments bulletin](#) Table 8a.

<sup>6</sup> See [2014/15 Higher Education Enrolments bulletin](#)

Level of Qualification - Of the 16,010 qualifications gained by students at NI HEIs, 9,285 (58.0%) obtained a 'first degree' qualification, 1,975 (12.3%) an 'other undergraduate' qualification and 4,750 (29.7%) obtained a 'postgraduate' qualification (Table 6d).

**Figure 7 : Students gaining HE qualifications at NI HEIs by level of qualification and gender - 2014/15**



### First Degree Qualifications

In 2014/15, 9,285 'first degree' qualifications were gained by students at NI HEIs; an increase of 4.2% from the 2013/14 figure of 8,915 (Tables 6d and 6f).

Mode of study - Of the 9,285 'first degree' qualifications gained in 2014/15, 90.0% were through full-time study and 10.0% were through part-time study (Table 7b).

In comparison to 2013/14, the number of full-time students gaining 'first degree' qualifications increased by 4.6% from 7,995 to 8,360 in 2014/15, and part-time numbers increased by 0.9% from 920 to 925 over the same period (Tables 6d and 6f).

Gender - In 2014/15, of the 9,285 students gaining 'first degrees' at NI HEIs, 56.8% were female and 43.2% were male. Of the 4,010 male students gaining a 'first degree' qualification, 89.7% were studying full-time compared to 90.3% for females (5,280) (Tables 7e and 7f).

Domicile - In 2014/15, of the 9,285 students gaining 'first degrees' at NI HEIs, 88.3% were from NI, 5.9% from non EU countries, 3.1% from ROI, 2.3% from GB and 0.4% from other EU countries (Table 7c).

Of the 8,200 students from NI gaining 'first degrees' at NI HEIs, 89.3% were full-time and 10.7% part-time. This compares to 99.6% full-time and 0.4% part-time for students from non EU countries (550), 91.5% full-time and 8.5% part-time for

students from the ROI (285) and 92.1% full-time and 7.9% part-time for students from GB (215). For the 40 students from other EU countries 95.0% qualified through full-time study and 5.0% part-time (Table 7b).

### **Other Undergraduate Qualifications**

In 2014/15, 1,975 'other undergraduate' qualifications were gained by students at NI HEIs; a decrease of 6.0% from the 2013/14 figure of 2,100 (Tables 6d and 6f).

Mode of study – Of the 1,975 'other undergraduate' qualifications gained in 2014/15, 39.1% were through full-time study and 60.9% were through part-time study (Table 7b).

In comparison to 2013/14, the number of full-time students gaining 'other undergraduate' qualifications decreased by 1.7%, from 785 to 770, in 2014/15 and part-time numbers decreased by 8.6% from 1,315 to 1,200 over the same period (Tables 6d and 6f).

Gender – In 2014/15, of the 1,975 students gaining 'other undergraduate' qualifications at NI HEIs, 59.5% were female and 40.5% were male. Of the 800 male students gaining an 'other undergraduate' qualification, 53.6% were studying full-time compared to 29.3% of females (1,175) (Tables 7e and 7f).

Domicile – In 2014/15, of the 1,975 students gaining an 'other undergraduate' qualification at NI HEIs, 72.8% were from NI, 16.4% from non EU countries, 5.5% from ROI, 5.0% from GB from non EU countries and 0.3% from other EU countries (Table 7c).

Of the 1,435 students from NI gaining an 'other undergraduate' qualification at NI HEIs, 26.2% were full-time and 73.8% part-time. This compares to 97.5% full-time and 2.5% part-time for students from non EU countries (325), 49.5% full-time and 50.5% part-time for students from the ROI (110). For the 100 students from GB, 23.2% qualified through full-time and 76.8% part-time (100) (Table 7b).

### **Postgraduate Qualifications**

In 2014/15, 4,750 'postgraduate' qualifications were gained by students at NI HEIs; a decrease of 3.1% from the 2013/14 figure of 4,900 (Tables 6d and 6f).

Mode of study – Of the 4,750 'postgraduate' qualifications gained in 2014/15, 53.2% were through full-time study and 46.8% were through part-time study (Table 7b).

In comparison to 2013/14, the number of full-time students gaining a 'postgraduate' qualification decreased by 4.0% from 2,630 to 2,525 in 2014/15 and part-time numbers decreased by 2.0% from 2,270 to 2,225 over the same period (Tables 6d and 6f).

Gender – In 2014/15, of the 4,750 students gaining 'postgraduate' qualifications at NI HEIs, 60.6% were female and 39.4% were male. Of the 1,870 male students



gaining a 'postgraduate' degree, 58.5% were studying full-time compared to 49.7% of females (2,880) (Tables 7e and 7f).

**Domicile** – In 2014/15, of the 4,750 students gaining 'postgraduate' qualifications at NI HEIs, 69.3% were from NI, 11.9% from non EU countries, 10.0% from ROI, 7.4% from GB and 1.4% from other EU countries (Table 7c).

Of the 3,290 students from NI gaining 'postgraduate' qualifications at NI HEIs, 48.8% were full-time and 51.2% part-time. This compares to 95.8% full-time and 4.2% part-time for non EU countries (565), 56.1% full-time and 43.9% part-time for students from the ROI (475), 16.5% full-time and 83.5% part-time for students from GB (350) and 80.3% full-time and 19.7% part-time for students from other EU countries (65) (Table 7b).

### **2.3 Subject of Study (Tables 8 to 8d, Figure 8)**

The most popular subject groups for students gaining qualifications at NI HEIs in 2014/15 were 'business and administrative studies' (18.3%), 'subjects allied to medicine' (16.1%) and 'social studies' (9.7%) (Table 8a).

Females accounted for 84.5% of qualifications gained in 'subjects allied to medicine', 71.5% of those gained in 'education' and 71.4% of those gained in 'languages' (Table 8c).

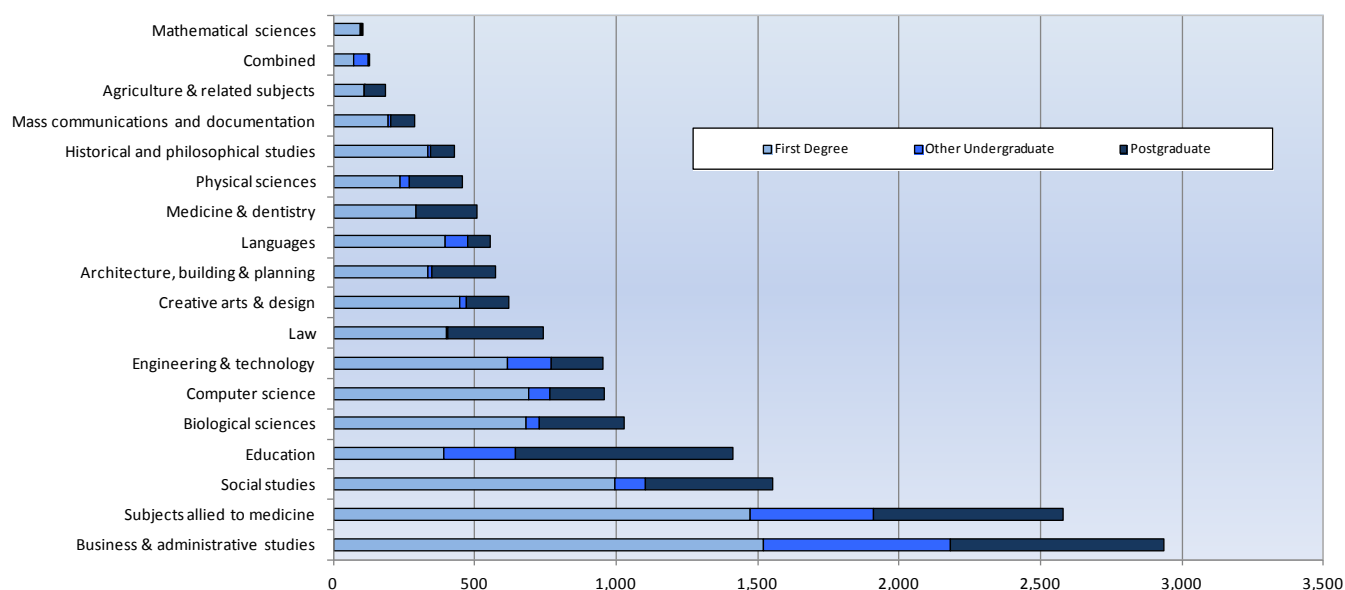
Males accounted for 80.2% of qualifications gained in 'engineering & technology', 76.2% of 'computer science' qualifications and 66.5% of 'architecture, building & planning' qualifications (Table 8c).

The most popular subject groups for students attaining a '*first degree*' qualification at NI HEIs were 'business and administrative studies' (16.4%), 'subjects allied to medicine' (15.9%) and 'social studies' (10.7%) (Table 8a).

For students attaining an '*other undergraduate*' qualification at NI HEIs, the three most popular subject groups were 'business and administrative studies' (33.6%), 'subjects allied to medicine' (22.0%) and 'education' (12.9%) (Table 8a).

For those students attaining a '*postgraduate*' qualification at NI HEIs, the three most popular subject groups were 'education' (16.1%), 'business and administrative studies' (15.8%) and 'subjects allied to medicine' (14.1%) (Table 8a).

**Figure 8 : Students gaining HE qualifications at NI HEIs by subject and level of qualification - 2014/15**



Executive is to grow a sustainable economy and invest in the future. To help achieve this, a target has been set to increase the uptake in economically relevant Science, Technology, Engineering and Mathematics (STEM<sup>7</sup>) places in education.

In 2014/15, 45.9% of qualifications gained by students at NI HEIs were in a Broad STEM related subject. A higher proportion of males than females gained their qualification in a Broad STEM related subject, 48.3% compared to 44.2%. Of 'first degree' qualifications gained, 48.9% were in Broad STEM related subjects, compared to 38.8% for 'other undergraduates' and 43.1% for 'postgraduates' (Tables 8b and 8d).

In 2014/15, 21.9% of qualifications gained by students at NI HEIs were in a Narrow STEM related subject. A higher proportion of males than females gained their qualification in a Narrow STEM related subject, 32.5% compared to 14.3%. Of 'first degree' qualifications gained, 25.0% were in Narrow STEM related subjects, compared to 16.0% for 'other undergraduates' and 18.2% for 'postgraduates' (Tables 8b and 8d).

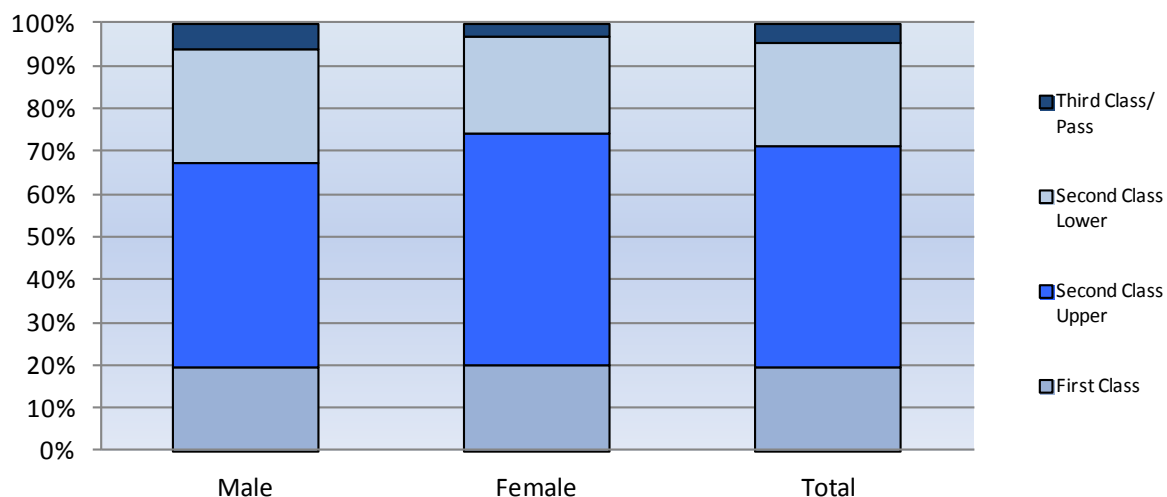
<sup>7</sup> Science, Technology, Engineering and Maths – see notes to readers for full description.

## 2.4 Classification of first degree<sup>8</sup> (Tables 9 to 9b, Figure 9)

In 2014/15, 71.2% (6,390) of 'first degree' graduates from NI HEIs (excluding those 320 attaining an unclassified 'first degree') achieved either a first class or upper second class honours degree (Table 9a and 9b).

Females (74.1%) were more likely than males (67.5%) to achieve a first class or upper second class honours degree (Table 9b).

**Figure 9: Students gaining first degree qualifications from NI HEIs by classification and gender - 2014/15**

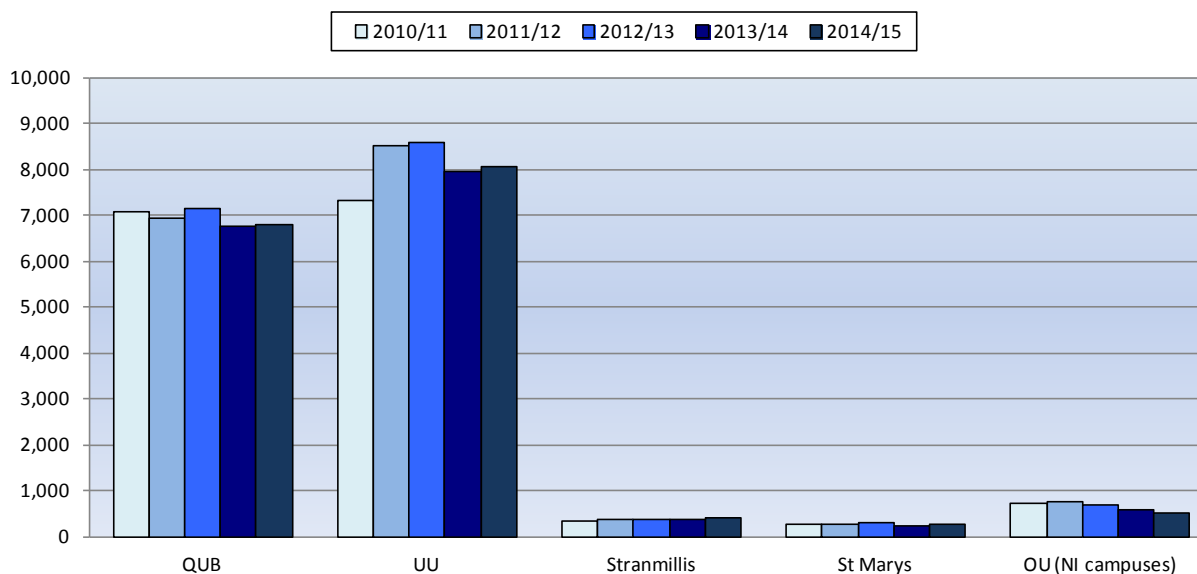


## 2.5 Institutional breakdown (Tables 10 to 10b, Figure 10)

Of all qualifications gained at NI HEIs in 2014/15, 50.3% were at Ulster University, 42.5% at Queen's University Belfast, 3.1% at NI campuses of the Open University, 2.5% at Stranmillis University College and 1.6% at St Mary's University College (Table 10).

<sup>8</sup> See [notes and definitions](#) point 15

**Figure 10 : Students gaining HE qualifications at NI HEIs by year and institution - 2010/11 to 2014/15**



#### Ulster University:

The number of students gaining qualifications at Ulster University (UU) increased from 7,940 in 2013/14 to 8,050 in 2014/15, an increase of 1.3% (Table 10a).

The number of students gaining qualifications through full-time study at Ulster University increased from 5,605 in 2013/14 to 5,805 in 2014/15 (a rise of 3.6%), while those gaining qualifications through part-time study decreased by 4.0% from 2,340 to 2,245 over the same period (Table 10a).

Postgraduate qualifications at UU decreased by 7.7%, while first degrees and other undergraduates increased by 6.5% and 0.3% respectively (Table 10b).

#### Queen's University Belfast:

The number of qualifications gained by students at Queen's University Belfast (QUB) increased by 0.6%, from 6,770 in 2013/14 to 6,805 in 2014/15 (Table 10a).

Within this, the number of students gaining qualifications through full-time study increased by 0.9% from 5,285 in 2013/14 to 5,335 in 2014/15, while those gaining a qualification through part-time study decreased by 0.7% from 1,485 to 1,475 over the same period (Table 10a).

First degree qualifications at QUB increased by 0.6% and postgraduate qualifications increased by 2.4%, while other undergraduate decreased by 7.3% (Table 10b).

### Open University:

All qualifications gained at the Open University (NI campuses) during 2014/15 were from part-time study.

The number of students gaining qualifications through part-time study decreased by 15.8%, from 590 in 2013/14 to 495 in 2014/15 (Table 10a).

First degree qualifications gained at OU (NI campuses) increased by 24.4%, while other undergraduate qualifications and postgraduate decreased by 45.8% and 37.3% respectively (Table 10b).

### Stranmillis University College:

Qualifications gained by students at Stranmillis University College increased from 370 in 2013/14 to 400 in 2014/15, a rise of 7.3% (Table 10a).

Within this the number of students gaining qualifications through full-time study decreased by 6.0% from 300 in 2013/14 to 280 in 2014/15, while those gaining qualifications through part-time study increased by 62.5% from 70 to 115 over the same period (Table 10a).

Other undergraduate qualifications gained at Stranmillis increased by 66.7% (from 55 in 2013/14 to 90 in 2014/15), while first degrees and postgraduates decreased by 3.0% and 1.9% respectively (Table 10b).

### St Mary's University College:

The number of students gaining qualifications at St. Mary's University College increased by 7.4%, from 240 in 2013/14 to 260 in 2014/15 (Table 10a).

The number of students gaining qualifications through full-time study increased by 7.2%, from 225 in 2013/14 to 240 in 2014/15, while those gaining qualifications through part-time study remained fairly constant, at 20, over the same period (Table 10a).

First degree qualifications at St Mary's and postgraduate both increased, by 6.8% and 11.4% respectively, while there were no other undergraduate qualifiers from St Mary's (Table 10b).

## 2.6 UK Comparison (Tables 11 to 11b, Figure 11)

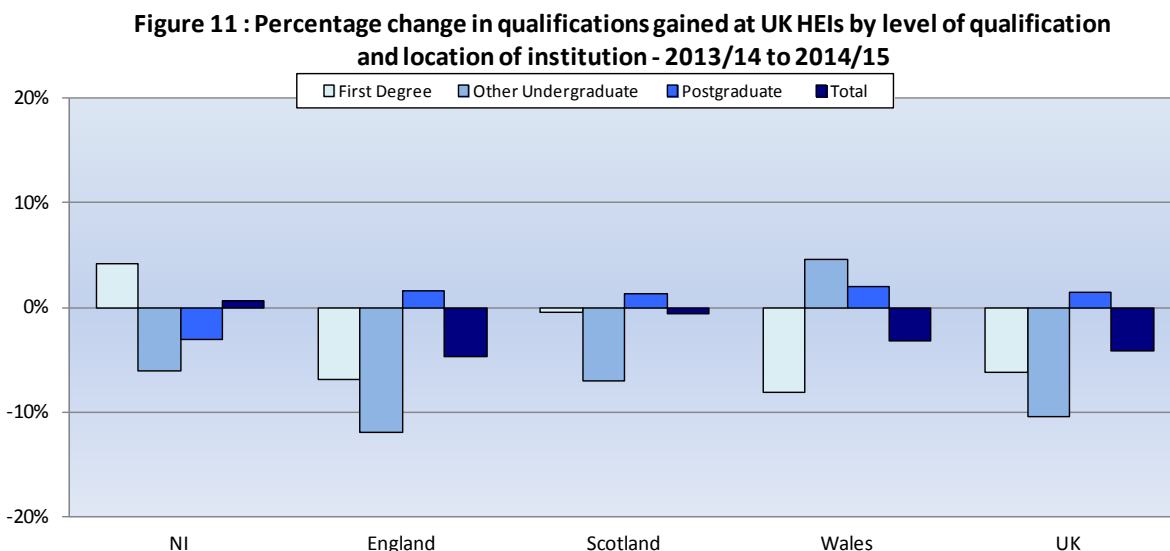
The number of students gaining qualifications at UK HEIs decreased from 777,600 in 2013/14 to 745,005 in 2014/15, a decrease of 4.2% (Table 11a).

Over the same period, qualifications gained at NI HEIs increased by 0.6% from 15,910 to 16,010. In comparison, qualifications gained at English HEIs decreased by 4.8% (647,275 to 616,420) while Welsh HEIs decreased by 3.3% (42,795 to 41,400). Scottish HEIs experienced a decrease of 0.6% in the number of qualifications gained, from 71,615 in 2013/14 to 71,175 in 2014/15 (Table 11a).

Figure 11 below illustrates the percentage change in qualifications gained for each country and for each level of qualification between 2013/14 to 2014/15. Northern Ireland was the only location to experience a decrease in ‘postgraduate’ qualifications gained, falling by 3.1% (4,900 to 4,750), while Wales increased by 2.0% (13,330 to 13,590), England increased by 1.5% (212,945 to 216,175), Scotland increased by 1.2% (26,730 to 27,065) over the same period (Table 11b).

Northern Ireland was the only location to experience an increase in ‘first degree’ qualifications gained, rising by 4.2% (8,915 to 9,285), while the rest of the regions experienced decreases (England 6.9%, Wales 8.1% and Scotland 0.5%) (Table 11b).

Wales experienced an increase of 4.6% (5,745 to 6,010) in ‘other undergraduate’ qualifications while the rest of the regions experienced decreases (England 11.9%, NI 6.0%, Scotland 7.0%) (Table 11b).



Qualifications gained through full-time study decreased by 5.0% (514,260 to 488,300) in England and 3.5% (34,805 to 33,595) in Wales, while NI increased by 2.2% (11,410 to 11,660) and Scotland increased by 0.4% (59,625 to 59,840) between 2013/14 and 2014/15 (Table 11a).

The number of qualifications gained through part-time study decreased in all regions (Scotland 5.5%, England 3.7%, NI 3.3%, and Wales 2.4%) between 2013/14 and 2014/15 (Table 11a).

## NOTES

1. The United Kingdom Statistics Authority has designated these statistics as National Statistics, in accordance with the Statistics and Registration Service Act 2007 and signifying compliance with the Code of Practice for Official Statistics. Designation can be broadly interpreted to mean that the statistics: meet identified user needs; are well explained and readily accessible; are produced according to sound methods, and are managed impartially and objectively in the public interest. Once statistics have been designated as National Statistics it is a statutory requirement that the Code of Practice shall continue to be observed.
2. The data presented in this bulletin are based on the 2014/15 Higher Education Statistics Agency (HESA) student record. HESA is the official agency for the collection of information on publicly funded Higher Education institutions in the UK. It was set up in 1993 following the White Paper 'Higher Education: a new framework', which called for more coherence in Higher Education statistics. Higher Education institutions include all publicly-funded universities. The HESA data presented in this bulletin relate to students at HE institutions in the UK and therefore do not include HE qualifications obtained at FE colleges in NI or GB, or at institutions in the Republic of Ireland.
3. HESA release separate publications providing information on HE Student Enrolments and Qualifications obtained at HEIs for the whole of the UK. A notable difference in the HESA publications and those released by the Department for Employment and Learning (DEL) is that from 2014/15 HESA use revised data returns for the time series figures, whereas DEL does not. Consequently, historical figures for the number of enrolments and qualifications at UK HEIs published by DEL may differ from those in HESA's publications. Further information on this can be found in the introduction of HESA's Statistical First Release (SFR) 2014/15: <https://www.hesa.ac.uk/content/view/3771/#sfrFixedVersion>
4. **Change to HESA Methodology**

From 2013/14, HESA have changed the allocation of Open University (OU) students to England, Wales, Scotland and Northern Ireland. Previously all OU enrolments and qualifications were counted as being within England, where the OU has its administrative centre. HESA has decided from their 2013/14 release onwards that enrolments and qualifications registered at one of the OU's national centres in Wales, Scotland and Northern Ireland will contribute to the totals of those countries where statistics are shown by country of provider.

A full public consultation of NI users of Higher Education Statistics was undertaken in 2015 on this change to the method for allocating OU students, which showed full support for the change. This publication and future NI Higher Education publications will therefore use the new allocation method for OU, but will also present for this year relevant tables using the old methodology for OU allocation for comparison purposes.



5. Further statistics on the Northern Ireland higher education sector, including enrolments, graduate destinations and various higher education fact sheets can be downloaded from the Department's website: <http://www.delni.gov.uk/higher-education-stats>
6. Guidance on the production of HE statistics - Information on methods for collecting and analysing HE data, the quality of HE statistics, and links to the quality guidance used in managing the production of higher education statistics can be accessed on our statistics guidance page - [www.delni.gov.uk/articles/quality-higher-education-statistics](http://www.delni.gov.uk/articles/quality-higher-education-statistics)
7. In 2006/07, an institution in NI made a change to their reporting practice with regards to qualifiers from taught 'postgraduate' courses. This means that the number of qualifiers from 'postgraduate' courses in 2006/07 cannot therefore be compared with other years.

The table below compares the published figures for other higher degrees at NI Higher Education institutions against what the figures would have been if they had been adjusted to ensure consistency in reporting practice.

	2005/06	2006/07
Other higher degree (published figures)	2,175	1,220
Other higher degree (adjusted to ensure consistency in reporting practice)	1,805	1,815

8. In 2008/09, an institution in NI mis-coded 535 'other undergraduate' qualifiers as having gained no HE qualification, when in fact they had gained an HE qualification. The error has been corrected for the data used in this bulletin, however, care must be taken when comparing 2008/09 data with data supplied by HESA. This error was not identified until after the HESA reporting deadline and therefore has not been corrected for HESA publications.
9. Figures for 2013/14 reported in this bulletin are counts of student enrolments associated with the award of an HE qualification during the period 1 August 2013 to 31 July 2014 inclusive.

#### 10. Uses made of HE statistics

This bulletin is disseminated directly to approximately 100 users. In addition, it is also published on the Department's website and can be accessed through a link on the UK National Statistics publication hub ([www.statistics.gov.uk/hub/index.html](http://www.statistics.gov.uk/hub/index.html)). Users include policy colleagues in DEL, academics, researchers, members of the public, the NI Assembly, other government departments and other interested parties and individuals.

The bulletin and further analysis of the data provide an evidence base that is used in a number of DEL policies, strategies and reviews. Some of the most recent examples are: -

- Graduating to Success - DEL's Higher Education Strategy
- Access to Success - DEL's Widening Participation Strategy
- Delivering Success through Excellence – an analysis of the Quality and Performance of DEL's Programmes and Provision.
- Review of Initial Teacher Education.

Further details on these strategies are available from the DEL website:  
<https://www.delni.gov.uk/topics/higher-education>

In addition, HE data are used within other NI departments and their agencies. Some of the most recent examples are: -

- DFP - as a key indicator in the Education Domain of the Northern Ireland Multiple Deprivation Measure.
- The Northern Ireland Economic Strategy
- Invest NI – to quantify the supply of graduates for potential inward investment to NI

Almost 200 HE statistical enquiries per year are received by the Department from various sources. These include requests for further breakdowns of enrolments, qualifications and destinations data.

In addition, approximately 25 assembly questions (either written or oral), relating to HE data, are received by the Department each year.

## 11. Government Targets

Data from this bulletin are used in the measurement of the following key commitment as set in the Northern Ireland Executive's Programme for Government:

Programme for Government – 2011-15

<http://www.northernireland.gov.uk/pfg-2011-2015-final-report.pdf>

“Upskill the working age population by delivering over 200,000 qualifications (DEL)”.

## DEFINITIONS

### 12. Higher education

Higher Education students for the purpose of HESA's data collection are those students on courses for which the level of instruction is above that of level 3 of the Qualifications and Curriculum Authority (QCA) National Qualifications Framework (NQF) (e.g. courses at the level of Certificate of HE and above).

### 13. Level of qualification gained.

- (i) Postgraduate programmes of study are those leading to higher degrees, diplomas and certificates (including Postgraduate Certificate of Education (PGCE))

and professional qualifications) and usually require that entrants are already qualified to degree level (i.e. already qualified at level 6 of the QCA National Qualifications Framework).

- (ii) Higher degrees include doctorates, masters degrees and higher bachelors degrees.
- (iii) Other postgraduate includes postgraduate diplomas, certificates and professional qualifications and PGCE.
- (iv) First degree includes first degrees with or without eligibility to register to practice with a health or social care or veterinary statutory regulatory body, first degrees with Qualified Teacher Status (QTS)/registration with a General Teaching Council (GTC), enhanced first degrees, first degrees obtained concurrently with a diploma and intercalated first degrees.
- (v) Other undergraduate includes qualification aims equivalent to and below first degree level, such as Professional Graduate Certificate in Education (PGCE), foundation degrees, diplomas in HE with eligibility to register to practice with a Health or Social Care or veterinary statutory regulatory body, Higher National Diploma (HND), Higher National Certificate (HNC), Diploma of Higher Education (DipHE), Certificate of Higher Education (CertHE), foundation courses at HE level, NVQ/SVQ levels 4 and 5, post-degree diplomas and certificates at undergraduate level, professional qualifications at undergraduate level, other undergraduate diplomas and certificates including post registration health and social care courses, other formal HE qualifications of less than degree standard, institutional undergraduate credit and no formal undergraduate qualifications.

#### 14. Mode of study - qualifications gained

- (i) Full-time students are those whose study was recorded as full-time (as described above), and also includes awards from dormant and writing-up status where the student's mode of study was previously full-time.
- (ii) Part-time students are those whose study was recorded as part-time (as described above), and also includes awards from dormant and writing-up status where the student's mode of study was previously part-time, and awards given to those on sabbatical.

#### 15. Classification of first degrees

The classification of a first degree indicates the qualification class that the student obtained. Certain qualifications obtained at first degree level are not subject to classification of the award, notably medical and general degrees. These, together with ordinary degrees and aegrotat qualifications, have been included within the 'unclassified' category. Third class honours, fourth class honours and the pass category have been aggregated as 'third class/pass'. Lower second and undivided second class honours have been aggregated as 'second class, lower division'.

From 2008/09 the percentage calculations included in this bulletin are expressed excluding unclassified first degrees. Therefore caution must be exercised when comparing percentages from previous year's bulletins.

## 16. Domicile

Domicile refers to a student's permanent place of residence prior to enrolment on an HE course. Student enrolments recorded with domicile UK region unknown, Channel Islands and Isle of Man are included in the GB category for the purposes of this bulletin.

## 17. Gender

From 2007/08, the field 'gender' changed to be consistent with the Aligned Data Definitions adopted by the Information Standards Board for education, skills, and children's services. Students of 'indeterminate gender' are included in total figures but not in separate breakdowns.

## 18. Academic year

The academic year runs from 1st August to 31st July.

## 19. STEM - Science, Technology, Engineering and Maths Qualifications

Broad STEM includes the following subject areas: Medicine & Dentistry, Subjects allied to Medicine, Biological Sciences, Veterinary Sciences, Agriculture & related subjects, Physical Sciences, Mathematical Sciences, Computer Science, Engineering & Technology and Architecture, Building & Planning.

Narrow STEM is a subset of Broad STEM and includes the following subject areas: Biological Sciences, Physical Sciences, Mathematical Sciences, Computer Science, Engineering & Technology.

## 20. The Open University (OU)

The Open University was previously defined as an English Institution (where it has its administrative centre). However, from this bulletin forward, where enrolments are broken down by country of institution, OU enrolments will be split between Northern Ireland, England, Scotland and Wales, depending on the location of the national centre.

## 21. Multiple Deprivation Measure (MDM)

The analysis presented in section 1.4 utilises five groups (quintiles) of Super Output Areas (SOAs) across Northern Ireland. These five groups are determined based on level of deprivation using the Northern Ireland Multiple Deprivation Measure (NIMDM).

Super Output Areas ranked 1 to 178 are the most deprived quintile of SOAs relative to all other SOAs. Those ranked 713 to 890 are the most affluent relative to all other SOAs. Super Output Area (SOA) is determined using the postcode provided on the enrolment record.

The Northern Ireland Multiple Deprivation Measure (NIMDM) 2010 is a weighted combination of the seven domains of deprivation. The Income and Employment Deprivation domains account for nearly 50% of the multiple deprivation measure. The

Health Deprivation and Disability Domain, and Education, Skills and Training Deprivation Domain account for a further 30% and the remainder is made up of the Proximity to Services, Living Environment and Crime & Disorder Domains.

For further details on deprivation measurement in Northern Ireland please follow this link:

[http://www.nisra.gov.uk/deprivation/nimdm\\_2010.htm](http://www.nisra.gov.uk/deprivation/nimdm_2010.htm)

## LIST OF TABLES

### Northern Ireland domiciled students gaining Higher Education Qualifications at UK Higher Education institutions

[Table 1](#): Northern Ireland domiciled students gaining qualifications at UK Higher Education Institutions by mode of study, level of qualification and location of institution - 2005/06 to 2014/15.....Page 40

[Table 1a](#): Northern Ireland domiciled students gaining qualifications at UK HEIs by mode of study and location of institution - 2005/06 to 2014/15.....Page 41

[Table 1b](#): Percentage change in qualifications gained by NI Domiciled students at UK HEIs by mode of study and location of institution between 2005/06 and 2014/15.....Page 41

[Table 1c](#): Percentage change in qualifications gained by NI Domiciled students at UK HEIs by mode of study and location of institution between 2013/14 and 2014/15.....Page 41

[Table 1d](#): NI Domiciled students gaining qualifications at UK HEIs by level of qualification and mode of study - 2005/06 to 2014/15.....Page 42

[Table 1e](#): Percentage change in qualifications gained by NI Domiciled students at UK HEIs by level of qualification and mode of study between 2005/06 and 2014/15.....Page 42

[Table 1f](#): Percentage change in qualifications gained by NI Domiciled students at UK HEIs by level of qualification and mode of study between 2013/14 and 2014/15.....Page 42

[Table 2](#): Northern Ireland domiciled students gaining qualifications at UK Higher Education Institutions by qualifications gained, location of study, mode of study and gender - 2014/15.....Page 43

[Table 2a](#): Northern Ireland domiciled students gaining qualifications at UK HEIs by level of qualification, location of institution and mode of Study - 2014/15.....Page 44

[Table 2b](#): Northern Ireland domiciled students gaining qualifications at UK HEIs by mode of study, level of qualification and location of institution - 2014/15.....Page 44

[Table 2c](#): Northern Ireland domiciled students gaining qualifications at UK HEIs by location of institution and level of qualification - 2014/15.....Page 44

[Table 2d](#): Northern Ireland domiciled students gaining qualifications at UK HEIs by level of qualification and gender - 2014/15.....Page 45

<a href="#">Table 2e</a> : Northern Ireland domiciled students gaining qualifications at UK HEIs by gender and level of qualification - 2014/15.....	Page 45
<a href="#">Table 2f</a> : Northern Ireland domiciled students gaining qualifications at UK HEIs by mode of study, level of qualification and gender - 2014/15.....	Page 45
<a href="#">Table 3</a> : Northern Ireland domiciled students gaining qualifications at UK Higher Education Institutions by qualifications gained, MDM quintile, mode of study and gender - 2014/15.....	Page 46
<a href="#">Table 3a</a> : Northern Ireland domiciled students gaining qualifications at UK Higher Education Institutions by mode of study and MDM quintile - 2014/15 (with %'s).....	Page 47
<a href="#">Table 4</a> : Northern Ireland domiciled students gaining qualifications at UK Higher Education Institutions by qualifications gained, subject area and gender - 2014/15.....	Page 48
<a href="#">Table 4a</a> : Northern Ireland domiciled students gaining qualifications at UK HEIs by qualifications gained and subject area - 2014/15.....	Page 49
<a href="#">Table 4b</a> : Proportion of Northern Ireland domiciled students gaining qualifications at UK HEIs in Broad and Narrow STEM subjects by level of qualification - 2014/15.....	Page 49
<a href="#">Table 4c</a> : Northern Ireland domiciled students gaining qualifications at UK HEIs by qualifications gained and gender - 2014/15.....	Page 49
<a href="#">Table 4d</a> : Proportion of Northern Ireland domiciled students gaining qualifications at UK HEIs in Broad and Narrow STEM subjects by gender - 2014/15.....	Page 49
<a href="#">Table 5</a> : Northern Ireland domiciled students gaining first degrees at UK Higher Education Institutions by subject area, degree classification and gender - 2014/15.....	Page 50
<a href="#">Table 5a</a> : Northern Ireland domiciled students gaining first degrees at UK HEIs by degree classification and gender - 2014/15.....	Page 51
<a href="#">Table 5b</a> : Proportion of Northern Ireland domiciled students gaining first degrees at UK HEIs by degree classification and gender - 2014/15.....	Page 51



**Students gaining Higher Education Qualifications at Northern Ireland Higher Education Institutions**

**Table 6:** Students gaining qualifications at Northern Ireland HEIs by level of qualification, mode of study and country of domicile - 2005/06 to 2014/15.....Page 52

**Table 6a:** Students gaining qualifications at NI HEIs by mode of study and country of domicile - 2005/06 to 2014/15.....Page 53

**Table 6b:** Percentage change in qualifications gained by students at NI HEIs by mode of study and country of domicile between 2005/06 and 2014/15....Page 53

**Table 6c:** Percentage change in qualifications gained by students at NI HEIs by mode of study and country of domicile between 2013/14 and 2014/15....Page 53

**Table 6d:** Students gaining qualifications at NI HEIs by level of qualification, mode of study - 2005/06 to 2014/15.....Page 54

**Table 6e:** Percentage change in qualifications gained by students at NI HEIs by level of qualification and mode of study between 2005/06 and 2014/15..Page 54

**Table 6f:** Percentage change in qualifications gained by students at NI HEIs by level of qualification and mode of study between 2013/14 and 2014/15..Page 54

**Table 7:** Students gaining qualifications at NI Higher Education Institutions by qualifications gained, country of domicile, mode of study and gender - 2014/15...Page 55

**Table 7a:** Students gaining qualifications at NI HEIs by level of qualification, country of domicile and mode of Study - 2014/15.....Page 56

**Table 7b:** Students gaining qualifications at NI HEIs by mode of study, level of qualification and country of domicile - 2014/15.....Page 56

**Table 7c:** Students gaining qualifications at NI HEIs by country of domicile and level of qualification - 2014/15.....Page 56

**Table 7d:** Students gaining qualifications at NI HEIs by level of qualification and gender - 2014/15.....Page 57

**Table 7e:** Students gaining qualifications at NI HEIs by gender and level of qualification - 2014/15.....Page 57

**Table 7f:** Students gaining qualifications at NI HEIs by mode of study, level of qualification and gender - 2014/15.....Page 57

**Table 8:** Students gaining qualifications at NI Higher Education Institutions by qualifications gained, subject area and gender - 2014/15.....Page 58

**Table 8a:** Students gaining qualifications at NI HEIs by qualifications gained and subject area - 2014/15.....Page 59

<a href="#">Table 8b</a> : Proportion of students gaining qualifications at NI HEIs in Broad and Narrow STEM subjects by level of qualification - 2014/15.....	Page 59
<a href="#">Table 8c</a> : Students gaining qualifications at NI HEIs by qualifications gained and gender - 2014/15.....	Page 59
<a href="#">Table 8d</a> : Proportion of students gaining qualifications at NI HEIs in Broad and Narrow STEM subjects by gender - 2014/15.....	Page 59
<a href="#">Table 9</a> : Students gaining first degrees at NI Higher Education Institutions by subject area, degree classification and gender - 2014/15.....	Page 60
<a href="#">Table 9a</a> : Students gaining first degrees at NI Higher Education Institutions by degree classification and gender - 2014/15.....	Page 61
<a href="#">Table 9b</a> : Proportion of students gaining first degrees at NI Higher Education Institutions by degree classification and gender - 2014/15.....	Page 61
<a href="#">Table 10</a> : Students gaining qualifications at NI Higher Education Institutions by qualification gained, level of study and institution - 2010/11 to 2014/15.....	Page 62
<a href="#">Table 10a</a> : Students gaining qualifications at NI HEIs by mode of study and Institution - 2013/14 and 2014/15.....	Page 63
<a href="#">Table 10b</a> : Students gaining qualifications at NI HEIs by level of qualification and Institution - 2013/14 and 2014/15.....	Page 63
<a href="#">Table 11</a> : Students gaining qualifications at UK HEIs by level of study, mode of study and country of Institution - 2010/11 to 2014/15.....	Page 64
<a href="#">Table 11a</a> : Students gaining qualifications at UK HEIs by mode of study and location of institution - 2013/14 and 2014/15.....	Page 65
<a href="#">Table 11b</a> : Students gaining qualifications at UK HEIs by level of qualification and location of institution - 2013/14 and 2014/15.....	Page 65

## **ANNEX A: TABLES**

**Table 1: Northern Ireland domiciled students gaining qualifications at UK Higher Education Institutions by mode of study, level of qualification and location of institution - 2005/06 to 2014/15**

Mode and Year	Level of qualification															
	First degree				Other undergraduate				Postgraduate				Total			
	Location of Institution				Location of Institution				Location of Institution				Location of Institution			
	NI	GB	OU <sup>(1)</sup>	Total	NI	GB	OU <sup>(1)</sup>	Total	NI	GB	OU <sup>(1)</sup>	Total	NI	GB	OU <sup>(1)</sup>	Total
<b>Full-time</b>																
2005/06	6,415	2,745	0	9,160	590	275	0	870	1,575	940	0	2,515	8,580	3,965	0	12,545
2006/07	6,665	2,645	0	9,310	565	295	0	860	1,165	900	0	2,065	8,395	3,845	0	12,235
2007/08	6,780	2,875	0	9,655	435	340	0	770	1,190	790	0	1,980	8,400	4,005	0	12,405
2008/09	6,810	2,985	0	9,795	325	340	0	665	1,345	720	0	2,065	8,480	4,045	0	12,525
2009/10	6,755	3,035	0	9,790	315	380	0	690	1,245	790	0	2,035	8,310	4,205	0	12,515
2010/11	6,740	3,065	0	9,805	155	405	0	560	1,605	855	0	2,460	8,500	4,320	0	12,820
2011/12	7,535	3,160	0	10,700	250	390	0	640	1,605	865	0	2,470	9,395	4,415	0	13,810
2012/13	7,475	3,345	0	10,820	305	450	0	755	1,595	805	0	2,400	9,375	4,600	0	13,975
2013/14	7,235	3,655	0	10,885	335	355	0	690	1,540	775	0	2,315	9,110	4,785	0	13,895
2014/15	7,320	3,425	0	10,745	375	345	0	725	1,605	805	0	2,410	9,300	4,580	0	13,880
<b>Part-time</b>																
2005/06	820	130	255	1,205	2,325	175	325	2,830	1,405	345	100	1,850	4,550	655	680	5,880
2006/07	710	105	200	1,015	1,850	260	415	2,525	1,445	470	130	2,045	4,005	835	750	5,585
2007/08	735	115	210	1,060	2,150	245	380	2,780	1,340	300	125	1,765	4,225	665	715	5,605
2008/09	810	120	200	1,130	1,500	240	355	2,100	1,310	305	70	1,685	3,620	665	625	4,915
2009/10	870	130	180	1,180	1,485	195	425	2,105	1,570	300	75	1,940	3,925	625	675	5,225
2010/11	680	120	205	1,005	1,470	220	430	2,120	1,400	285	70	1,760	3,550	630	705	4,885
2011/12	650	115	195	960	1,305	205	485	1,995	1,565	340	80	1,985	3,515	660	760	4,940
2012/13	670	65	210	945	1,205	240	415	1,860	1,565	355	55	1,975	3,440	660	680	4,780
2013/14	615	65	240	925	890	130	270	1,290	1,610	355	75	2,040	3,115	555	590	4,255
2014/15	580	90	300	970	915	135	145	1,195	1,640	330	50	2,020	3,130	555	495	4,185
<b>Total</b>																
2005/06	7,230	2,880	255	10,365	2,920	455	325	3,695	2,980	1,285	100	4,365	13,130	4,615	680	18,425
2006/07	7,375	2,750	200	10,330	2,415	555	415	3,390	2,610	1,370	130	4,110	12,400	4,675	750	17,825
2007/08	7,515	2,990	210	10,715	2,585	585	380	3,550	2,525	1,095	125	3,745	12,625	4,670	715	18,010
2008/09	7,620	3,110	200	10,925	1,830	580	355	2,765	2,655	1,025	70	3,745	12,100	4,710	625	17,440
2009/10	7,620	3,165	180	10,970	1,800	575	425	2,795	2,810	1,090	75	3,975	12,235	4,830	675	17,740
2010/11	7,420	3,185	205	10,810	1,625	625	430	2,675	3,010	1,140	70	4,220	12,050	4,950	705	17,710
2011/12	8,185	3,280	195	11,660	1,555	595	485	2,635	3,170	1,205	80	4,455	12,910	5,080	760	18,750
2012/13	8,145	3,405	210	11,765	1,510	690	415	2,610	3,160	1,160	55	4,375	12,815	5,255	680	18,750
2013/14	7,850	3,720	240	11,810	1,220	490	270	1,980	3,150	1,130	75	4,360	12,220	5,340	590	18,150
2014/15	7,900	3,515	300	11,715	1,290	485	145	1,920	3,245	1,135	50	4,430	12,435	5,135	495	18,065

Source : HESA

**Notes**

<sup>(1)</sup> Open University

To prevent the identification of individuals, figures in the attached table are rounded to the nearest 5, with 0, 1, 2 rounded to 0. Due to rounding, the sum of numbers in each row or column may not match the total shown.

**Table 1a: Northern Ireland domiciled students gaining qualifications at UK HEIs by mode of study and location of institution - 2005/06 to 2014/15**

Mode and Year	Location of Institution						
	NI	NI %	GB	GB %	OU <sup>(1)</sup>	OU %	Total
<b>Full-time</b>							
2005/06	8,580	68.4%	3,965	31.6%	0	0.0%	12,545
2006/07	8,395	68.6%	3,845	31.4%	0	0.0%	12,235
2007/08	8,400	67.7%	4,005	32.3%	0	0.0%	12,405
2008/09	8,480	67.7%	4,045	32.3%	0	0.0%	12,525
2009/10	8,310	66.4%	4,205	33.6%	0	0.0%	12,515
2010/11	8,500	66.3%	4,320	33.7%	0	0.0%	12,820
2011/12	9,395	68.0%	4,415	32.0%	0	0.0%	13,810
2012/13	9,375	67.1%	4,600	32.9%	0	0.0%	13,975
2013/14	9,110	65.6%	4,785	34.4%	0	0.0%	13,895
2014/15	9,300	67.0%	4,580	33.0%	0	0.0%	13,880
<b>Part-time</b>							
2005/06	4,550	77.4%	655	11.1%	680	11.5%	5,880
2006/07	4,005	71.7%	835	14.9%	750	13.4%	5,585
2007/08	4,225	75.4%	665	11.8%	715	12.8%	5,605
2008/09	3,620	73.7%	665	13.6%	625	12.8%	4,915
2009/10	3,925	75.1%	625	12.0%	675	13.0%	5,225
2010/11	3,550	72.7%	630	12.9%	705	14.5%	4,885
2011/12	3,515	71.2%	660	13.4%	760	15.4%	4,940
2012/13	3,440	72.0%	660	13.8%	680	14.2%	4,780
2013/14	3,115	73.1%	555	13.0%	590	13.8%	4,255
2014/15	3,130	74.8%	555	13.3%	495	11.9%	4,185
<b>Total</b>							
2005/06	13,130	71.3%	4,615	25.1%	680	3.7%	18,425
2006/07	12,400	69.6%	4,675	26.2%	750	4.2%	17,825
2007/08	12,625	70.1%	4,670	25.9%	715	4.0%	18,010
2008/09	12,100	69.4%	4,710	27.0%	625	3.6%	17,440
2009/10	12,235	69.0%	4,830	27.2%	675	3.8%	17,740
2010/11	12,050	68.1%	4,950	28.0%	705	4.0%	17,710
2011/12	12,910	68.9%	5,080	27.1%	760	4.1%	18,750
2012/13	12,815	68.3%	5,255	28.0%	680	3.6%	18,750
2013/14	12,220	67.3%	5,340	29.4%	590	3.2%	18,150
2014/15	12,435	68.8%	5,135	28.4%	495	2.7%	18,065

Source : HESA

**Table 1b: Percentage change in qualifications gained by NI Domiciled students at UK HEIs by mode of study and location of institution between 2005/06 and 2014/15**

Mode	Location of Institution			
	NI	GB	OU <sup>(1)</sup>	Total
Full-time	8.4%	15.5%	-	10.6%
Part-time	-31.2%	-14.7%	-26.8%	-28.9%
Total	-5.3%	11.2%	-26.8%	-2.0%

Source : HESA

**Table 1c: Percentage change in qualifications gained by NI Domiciled students at UK HEIs by mode of study and location of institution between 2013/14 and 2014/15**

Mode	Location of Institution			
	NI	GB	OU <sup>(1)</sup>	Total
Full-time	2.1%	-4.3%	-	-0.1%
Part-time	0.6%	0.5%	-15.8%	-1.7%
Total	1.7%	-3.8%	-15.8%	-0.5%

**Notes**

<sup>(1)</sup> Open University

To prevent the identification of individuals, figures in the attached table are rounded to the nearest 5, with 0, 1, 2 rounded to 0. Due to rounding, the sum of numbers in each row or column may not match the total shown.

**Table 1d: NI Domiciled students gaining qualifications at UK HEIs by level of qualification and mode of study - 2005/06 to 2014/15**

Mode and Year	Level of qualification						
	First Degree	First Degree %	Other Undergraduate	Other Undergraduate %	Postgraduate	Postgraduate %	Total
<b>Full-time</b>							
2005/06	9,160	73.0%	870	6.9%	2,515	20.1%	12,545
2006/07	9,310	76.1%	860	7.0%	2,065	16.9%	12,235
2007/08	9,655	77.8%	770	6.2%	1,980	16.0%	12,405
2008/09	9,795	78.2%	665	5.3%	2,065	16.5%	12,525
2009/10	9,790	78.2%	690	5.5%	2,035	16.3%	12,515
2010/11	9,805	76.5%	560	4.4%	2,460	19.2%	12,820
2011/12	10,700	77.5%	640	4.6%	2,470	17.9%	13,810
2012/13	10,820	77.4%	755	5.4%	2,400	17.2%	13,975
2013/14	10,885	78.4%	690	5.0%	2,315	16.7%	13,895
2014/15	10,745	77.4%	725	5.2%	2,410	17.4%	13,880
<b>Part-time</b>							
2005/06	1,205	20.5%	2,830	48.1%	1,850	31.4%	5,880
2006/07	1,015	18.2%	2,525	45.2%	2,045	36.6%	5,585
2007/08	1,060	18.9%	2,780	49.6%	1,765	31.5%	5,605
2008/09	1,130	23.0%	2,100	42.7%	1,685	34.3%	4,915
2009/10	1,180	22.6%	2,105	40.3%	1,940	37.2%	5,225
2010/11	1,005	20.6%	2,120	43.4%	1,760	36.0%	4,885
2011/12	960	19.4%	1,995	40.4%	1,985	40.1%	4,940
2012/13	945	19.8%	1,860	38.9%	1,975	41.3%	4,780
2013/14	925	21.7%	1,290	30.3%	2,040	48.0%	4,255
2014/15	970	23.2%	1,195	28.6%	2,020	48.2%	4,185
<b>Total</b>							
2005/06	10,365	56.2%	3,695	20.1%	4,365	23.7%	18,425
2006/07	10,330	57.9%	3,390	19.0%	4,110	23.0%	17,825
2007/08	10,715	59.5%	3,550	19.7%	3,745	20.8%	18,010
2008/09	10,925	62.7%	2,765	15.9%	3,745	21.5%	17,440
2009/10	10,970	61.8%	2,795	15.8%	3,975	22.4%	17,740
2010/11	10,810	61.1%	2,675	15.1%	4,220	23.8%	17,710
2011/12	11,660	62.2%	2,635	14.1%	4,455	23.8%	18,750
2012/13	11,765	62.7%	2,610	13.9%	4,375	23.3%	18,750
2013/14	11,810	65.1%	1,980	10.9%	4,360	24.0%	18,150
2014/15	11,715	64.9%	1,920	10.6%	4,430	24.5%	18,065

Source : HESA

**Table 1e: Percentage change in qualifications gained by NI Domiciled students at UK HEIs by level of qualification and mode of study between 2005/06 and 2014/15**

Mode	Level of qualification			
	First Degree	Other Undergraduate	Postgraduate	Total
Full-time	17.3%	-16.7%	-4.2%	10.6%
Part-time	-19.4%	-57.7%	9.1%	-28.9%
Total	13.0%	-48.1%	1.5%	-2.0%

Source : HESA

**Table 1f: Percentage change in qualifications gained by NI Domiciled students at UK HEIs by level of qualification and mode of study between 2013/14 and 2014/15**

Mode	Level of qualification			
	First Degree	Other Undergraduate	Postgraduate	Total
Full-time	-1.3%	4.9%	4.1%	-0.1%
Part-time	5.0%	-7.4%	-1.1%	-1.7%
Total	-0.8%	-3.1%	1.6%	-0.5%

Source : HESA

To prevent the identification of individuals, figures in the attached table are rounded to the nearest 5, with 0, 1, 2 rounded to 0. Due to rounding, the sum of numbers in each row or column may not match the total shown.

**Table 2: Northern Ireland domiciled students gaining qualifications at UK Higher Education Institutions by qualifications gained, location of study, mode of study and gender - 2014/15**

Location of Study	Mode	Gender	Undergraduate (UG)			Postgraduate (PG)					Total
			First Degree	Other UG	All UG	Higher Degrees		Other Postgraduate		All PG	
						Doctorate	Other Higher Degrees	PGCE	Other PG		
Northern Ireland	Full-time	Male	3,075	210	3,285	95	425	75	120	710	3,995
		Female	4,245	170	4,410	100	395	190	210	895	5,305
		Total	7,320	375	7,695	195	815	265	330	1,605	9,300
	Part-time	Male	250	260	510	40	215	0	340	600	1,110
		Female	330	655	980	30	270	0	735	1,040	2,020
		Total	580	915	1,495	70	485	5	1,075	1,640	3,130
	Total	Male	3,325	470	3,795	135	640	75	460	1,310	5,105
		Female	4,570	820	5,395	130	665	195	945	1,935	7,330
		Total	7,900	1,290	9,190	265	1,305	270	1,405	3,245	12,435
England	Full-time	Male	1,005	135	1,140	25	110	95	15	250	1,390
		Female	1,415	140	1,550	20	105	250	15	395	1,945
		Total	2,415	275	2,690	45	215	345	35	640	3,335
	Part-time	Male	35	80	110	10	60	0	45	115	225
		Female	35	45	85	15	65	5	80	160	245
		Total	70	125	195	25	125	5	125	275	470
	Total	Male	1,035	215	1,250	35	170	95	60	365	1,615
		Female	1,450	185	1,635	35	170	255	95	555	2,190
		Total	2,485	400	2,885	70	340	350	155	920	3,805
Scotland	Full-time	Male	365	25	390	10	25	10	10	55	445
		Female	535	35	570	10	35	25	5	75	645
		Total	900	60	960	15	65	35	15	130	1,090
	Part-time	Male	5	0	10	0	5	0	5	10	20
		Female	10	5	20	5	5	0	15	25	45
		Total	15	10	25	5	15	0	20	40	65
	Total	Male	370	30	400	10	35	10	15	65	465
		Female	545	40	585	10	45	25	20	100	690
		Total	915	70	985	20	80	35	35	170	1,155
Wales	Full-time	Male	45	10	55	0	5	5	5	15	70
		Female	65	5	70	0	10	10	5	20	90
		Total	110	15	125	5	15	10	5	35	160
	Part-time	Male	0	0	0	0	5	0	5	10	10
		Female	0	0	0	0	5	0	5	10	10
		Total	0	0	5	0	10	0	5	15	20
	Total	Male	50	10	55	0	10	5	5	20	80
		Female	65	5	70	0	15	10	5	30	100
		Total	110	15	125	5	25	10	15	50	180
Open University	Full-time	Male	0	0	0	0	0	0	0	0	0
		Female	0	0	0	0	0	0	0	0	0
		Total	0	0	0	0	0	0	0	0	0
	Part-time	Male	145	65	210	0	10	5	5	20	230
		Female	155	85	240	0	15	5	5	30	270
		Total	300	145	450	0	30	5	10	50	495
	Total	Male	145	65	210	0	10	5	5	20	230
		Female	155	85	240	0	15	5	5	30	270
		Total	300	145	450	0	30	5	10	50	495
All Students	Full-time	Male	4,490	380	4,870	130	565	180	145	1,025	5,895
		Female	6,255	345	6,600	130	545	475	235	1,385	7,985
		Total	10,745	725	11,470	260	1,110	655	385	2,410	13,880
	Part-time	Male	435	405	840	50	300	5	400	755	1,595
		Female	535	790	1,325	50	365	10	840	1,265	2,590
		Total	970	1,195	2,165	100	660	15	1,240	2,020	4,185
	Total	Male	4,925	785	5,710	185	865	190	545	1,780	7,490
		Female	6,790	1,135	7,925	175	910	485	1,080	2,650	10,575
		Total	11,715	1,920	13,635	360	1,775	675	1,625	4,430	18,065

Source : HESA

To prevent the identification of individuals, figures in the attached table are rounded to the nearest 5, with 0, 1, 2 rounded to 0. Due to rounding, the sum of numbers in each row or column may not match the total shown.

**Table 2a: Northern Ireland domiciled students gaining qualifications at UK HEIs by level of qualification, location of institution and mode of study - 2014/15**

Location of Institution	First Degree			Other Undergraduate			Postgraduate			Total		
	Full-time	Part-time	Total	Full-time	Part-time	Total	Full-time	Part-time	Total	Full-time	Part-time	Total
NI	7,320	580	7,900	375	915	1,290	1,605	1,640	3,245	9,300	3,130	12,435
GB	3,425	90	3,515	345	135	485	805	330	1,135	4,580	555	5,135
OU <sup>(1)</sup>	0	300	300	0	145	145	0	50	50	0	495	495
<b>Total</b>	<b>10,745</b>	<b>970</b>	<b>11,715</b>	<b>725</b>	<b>1,195</b>	<b>1,920</b>	<b>2,410</b>	<b>2,020</b>	<b>4,430</b>	<b>13,880</b>	<b>4,185</b>	<b>18,065</b>

Source : HESA

**Table 2b: Mode of Study breakdown of Northern Ireland domiciled students gaining qualifications at UK HEIs by level of qualification and location of institution - 2014/15**

Location of Institution	First Degree			Other Undergraduate			Postgraduate			Total		
	Full-time	Part-time	Total	Full-time	Part-time	Total	Full-time	Part-time	Total	Full-time	Part-time	Total
NI	92.7%	7.3%	7,900	29.2%	70.8%	1,290	49.5%	50.5%	3,245	74.8%	25.2%	12,435
GB	97.5%	2.5%	3,515	71.8%	28.2%	485	70.8%	29.2%	1,135	89.2%	10.8%	5,135
OU	0.0%	100.0%	300	0.0%	100.0%	145	0.0%	100.0%	50	0.0%	100.0%	495
<b>Total</b>	<b>91.7%</b>	<b>8.3%</b>	<b>11,715</b>	<b>37.7%</b>	<b>62.3%</b>	<b>1,920</b>	<b>54.4%</b>	<b>45.6%</b>	<b>4,430</b>	<b>76.8%</b>	<b>23.2%</b>	<b>18,065</b>

Source : HESA

**Table 2c: Northern Ireland domiciled students gaining qualifications at UK HEIs by location of institution and level of qualification - 2014/15**

Location of Institution	First Degree		Other Undergraduate		Postgraduate		Total	
	First Degree	First Degree %	Other Undergraduate	Other Undergraduate	Postgraduate	Postgraduate %	Total	Total %
NI	7,900	67.4%	1,290	67.2%	3,245	73.2%	12,435	68.8%
GB	3,515	30.0%	485	25.2%	1,135	25.7%	5,135	28.4%
OU	300	2.6%	145	7.7%	50	1.1%	495	2.7%
<b>Total</b>	<b>11,715</b>		<b>1,920</b>		<b>4,430</b>		<b>18,065</b>	

Source : HESA

Notes

<sup>(1)</sup> Open University

To prevent the identification of individuals, figures in the attached table are rounded to the nearest 5, with 0, 1, 2 rounded to 0. Due to rounding, the sum of numbers in each row or column may not match the total shown.



**Table 2d: Level of qualification breakdown of Northern Ireland domiciled students gaining qualifications at UK HEIs by gender - 2014/15**

Gender	Level of Qualification						
	First Degree	First Degree %	Other Undergraduate	Other Undergraduate	Postgraduate	Postgraduate %	Total
Male	4,925	65.8%	785	10.5%	1,780	23.8%	7,490
Female	6,790	64.2%	1,135	10.7%	2,650	25.1%	10,575
Total	11,715	64.9%	1,920	10.6%	4,430	24.5%	18,065

Source : HESA

**Table 2e: Gender breakdown of Northern Ireland domiciled students gaining qualifications at UK HEIs by level of qualification - 2014/15**

Gender	Level of Qualification							Total	Total %
	First Degree	First Degree %	Other Undergraduate	Other Undergraduate	Postgraduate	Postgraduate %			
Male	4,925	42.0%	785	40.9%	1,780	40.2%	7,490	41.5%	
Female	6,790	58.0%	1,135	59.1%	2,650	59.8%	10,575	58.5%	
Total	11,715		1,920		4,430		18,065		

Source : HESA

**Table 2f: Mode of study breakdown of Northern Ireland domiciled students gaining qualifications at UK HEIs by level of qualification and gender - 2014/15**

Mode and Gender	Level of Qualification							Total	Total %
	First Degree	First Degree %	Other Undergraduate	Other Undergraduate	Postgraduate	Postgraduate %			
Male	Full-time	4,490	91.1%	380	48.4%	1,025	57.6%	5,895	78.7%
	Part-time	435	8.9%	405	51.6%	755	42.4%	1,595	21.3%
	Total	4,925		785		1,780		7,490	
Female	Full-time	6,255	92.1%	345	30.3%	1,385	52.3%	7,985	75.5%
	Part-time	535	7.9%	790	69.7%	1,265	47.7%	2,590	24.5%
	Total	6,790		1,135		2,650		10,575	
Total	Full-time	10,745	91.7%	725	37.7%	2,410	54.4%	13,880	76.8%
	Part-time	970	8.3%	1,195	62.3%	2,020	45.6%	4,185	23.2%
	Total	11,715		1,920		4,430		18,065	

Source : HESA

To prevent the identification of individuals, figures in the attached table are rounded to the nearest 5, with 0, 1, 2 rounded to 0. Due to rounding, the sum of numbers in each row or column may not match the total shown.

**Table 3: Northern Ireland domiciled students gaining qualifications at UK Higher Education Institutions by qualifications gained, mdm quintile, mode of study and gender - 2014/15**

Mode of study	Multiple Deprivation Quintile	First degree			Other undergraduate			Postgraduate			Total		
		Male	Female	Total	Male	Female	Total	Male	Female	Total	Male	Female	Total
Full-time	Group 1 - Most Deprived	510	810	1320	60	50	110	110	150	260	680	1010	1690
	Group 2	740	1080	1820	80	65	150	150	205	355	970	1350	2325
	Group 3	960	1390	2345	80	75	160	200	300	500	1240	1765	3005
	Group 4	1080	1460	2545	80	75	160	235	325	560	1400	1865	3265
	Group 5 - Least Deprived	1195	1505	2700	75	70	150	325	390	715	1595	1965	3565
	Total	4485	6245	10730	380	345	720	1020	1370	2390	5885	7960	13845
Part-time	Group 1 - Most Deprived	75	110	185	80	115	195	70	115	185	225	340	565
	Group 2	70	100	170	60	130	190	120	210	330	250	440	690
	Group 3	100	110	210	85	180	265	120	290	410	305	580	885
	Group 4	85	105	190	65	170	235	165	275	440	320	550	870
	Group 5 - Least Deprived	105	110	215	110	175	285	245	335	580	460	620	1080
	Total	435	530	970	405	770	1175	720	1225	1945	1560	2525	4090
Total	Group 1 - Most Deprived	590	920	1505	140	165	305	180	265	445	905	1350	2255
	Group 2	810	1180	1990	140	200	340	270	410	685	1220	1790	3010
	Group 3	1060	1495	2555	170	255	425	315	590	910	1545	2345	3890
	Group 4	1165	1565	2730	150	245	395	405	600	1005	1720	2410	4130
	Group 5 - Least Deprived	1300	1615	2915	190	245	435	570	725	1295	2060	2585	4645
	Total	4925	6775	11700	785	1115	1900	1740	2595	4335	7445	10485	17935

Source : HESA

To prevent the identification of individuals, figures in the attached table are rounded to the nearest 5, with 0, 1, 2 rounded to 0. Due to rounding, the sum of numbers in each row or column may not match the total shown.

Note: There were 130 cases where the postcode was unknown and therefore no MDM Quintile could be assigned.

**Table 3a: Northern Ireland domiciled students gaining qualifications at UK Higher Education Institutions by mode of study and mdm quintile - 2014/15 (with %'s)**

Mode of study	Multiple Deprivation Quintile										
	Group 1 - Most Deprived	Group 1 - Most Deprived %	Group 2	Group 2 %	Group 3	Group 3 %	Group 4	Group 4 %	Group 5 - Least Deprived	Group 5 - Least Deprived %	Total
Full-time	1,690	12.2%	2,325	16.8%	3,005	21.7%	3,265	23.6%	3,565	25.7%	13,845
Part-time	565	13.8%	690	16.9%	885	21.6%	870	21.2%	1,080	26.4%	4,090
<b>Total</b>	<b>2,255</b>	<b>12.6%</b>	<b>3,010</b>	<b>16.8%</b>	<b>3,890</b>	<b>21.7%</b>	<b>4,130</b>	<b>23.0%</b>	<b>4,645</b>	<b>25.9%</b>	<b>17,935</b>

Source : HESA

To prevent the identification of individuals, figures in the attached table are rounded to the nearest 5, with 0, 1, 2 rounded to 0. Due to rounding, the sum of numbers in each row or column may not match the total shown.

Note: There were 132 cases where the postcode was unknown and therefore no MDM Quintile could be assigned.

**Table 4: Northern Ireland domiciled students gaining qualifications at UK Higher Education Institutions by qualifications gained, subject area and gender - 2014/15**

Qualification	Gender	Medicine & dentistry	Subjects allied to medicine	Biological sciences	Veterinary science	Agriculture & related subjects	Physical sciences	Mathematical sciences	Computer science	Engineering & technology	Architecture, building & planning	Social studies	Law	Business & administrative studies	Mass communications and documentation	Languages	Historical and philosophical studies	Creative arts & design	Education	Combined	Total
First Degree	Male	215	320	395	5	60	215	90	575	545	265	400	200	695	115	170	210	290	110	50	4925
	Female	295	1,505	580	20	85	155	85	195	105	105	775	345	800	170	395	195	430	525	30	6790
	Total	510	1,820	975	25	145	375	170	770	655	370	1175	545	1495	285	560	405	720	635	80	11715
Other Undergraduate	Male	0	40	55	0	5	35	5	75	80	20	50	5	200	5	25	10	30	120	30	785
	Female	5	370	35	0	5	10	0	20	15	5	75	5	205	15	45	10	35	255	25	1135
	Total	5	410	90	0	10	45	10	95	95	25	125	10	405	15	70	20	60	375	55	1920
All Undergraduate	Male	215	360	450	10	65	250	95	650	625	290	450	205	890	120	195	220	320	230	80	5,710
	Female	300	1,875	615	20	90	170	85	215	120	110	850	350	1,005	185	440	205	465	775	55	7,925
	Total	515	2,235	1,065	25	155	420	180	860	745	395	1,300	555	1,895	300	630	425	785	1,005	135	13,635
Doctorate	Male	20	5	25	0	0	35	5	5	25	5	15	5	5	0	5	10	20	5	0	185
	Female	30	10	30	0	0	35	0	0	10	0	15	5	5	0	10	10	10	5	0	175
	Total	50	15	55	0	0	70	5	5	35	5	30	10	10	5	15	15	30	10	0	360
Other Higher Degrees	Male	30	40	65	0	10	35	10	120	55	35	65	65	145	25	20	50	50	40	0	865
	Female	35	95	120	0	20	30	0	30	10	25	90	80	140	35	40	25	60	75	0	910
	Total	65	130	180	0	30	65	10	155	70	60	155	145	285	60	60	75	110	115	5	1,775
PGCE	Male	0	0	0	0	0	0	0	0	0	0	0	0	0	0	0	0	0	190	0	190
	Female	0	0	0	0	0	0	0	0	0	0	0	0	0	0	0	0	0	485	0	485
	Total	0	0	0	0	0	0	0	0	0	0	0	0	0	0	0	0	0	675	0	675
Other Postgraduate	Male	45	35	15	0	5	5	0	15	15	80	55	75	50	15	0	5	5	130	0	545
	Female	90	270	35	0	30	5	0	15	10	65	190	95	65	20	0	5	5	180	0	1,080
	Total	135	310	50	0	35	10	0	30	20	140	245	175	115	35	5	5	10	310	0	1,625
All Postgraduate	Male	100	80	105	0	15	75	15	140	95	115	135	150	200	40	25	65	70	360	0	1,780
	Female	150	375	185	0	50	65	5	50	30	90	295	180	215	55	55	40	80	745	5	2,650
	Total	250	455	285	0	65	145	15	190	125	205	430	330	410	95	80	100	150	1,105	5	4,430
Total	Male	310	440	555	10	80	330	110	790	720	405	585	355	1,090	160	220	285	390	590	80	7,490
	Female	450	2,250	800	20	140	235	90	260	150	200	1,140	530	1,220	235	495	240	545	1,520	60	10,575
	Total	765	2,690	1,355	30	220	565	195	1,050	870	605	1,725	885	2,310	395	710	525	935	2,110	140	18,065

Source : HESA

To prevent the identification of individuals, figures in the attached table are rounded to the nearest 5, with 0, 1, 2 rounded to 0.

Due to rounding, the sum of numbers in each row or column may not match the total shown.

**Table 4a: Northern Ireland domiciled students gaining qualifications at UK HEIs by qualifications gained and subject area - 2014/15**

Subject Area	First degree		Other Undergraduate		Postgraduate		Total	
Medicine & dentistry	510	4.4%	5	0.2%	250	5.6%	765	4.2%
Subjects allied to medicine	1,820	15.6%	410	21.4%	455	10.3%	2,690	14.9%
Biological sciences	975	8.3%	90	4.7%	285	6.5%	1,355	7.5%
Veterinary science	25	0.2%	0	0.1%	0	0.0%	30	0.2%
Agriculture & related subjects	145	1.2%	10	0.6%	65	1.5%	220	1.2%
Physical sciences	375	3.2%	45	2.4%	145	3.2%	565	3.1%
Mathematical sciences	170	1.5%	10	0.5%	15	0.4%	195	1.1%
Computer science	770	6.6%	95	4.9%	190	4.2%	1,050	5.8%
Engineering & technology	655	5.6%	95	4.9%	125	2.8%	870	4.8%
Architecture, building & planning	370	3.2%	25	1.4%	205	4.7%	605	3.3%
Social studies	1,175	10.0%	125	6.5%	430	9.7%	1,725	9.6%
Law	545	4.6%	10	0.6%	330	7.4%	885	4.9%
Business & administrative studies	1,495	12.8%	405	21.0%	410	9.3%	2,310	12.8%
Mass communications and documentation	285	2.4%	15	0.9%	95	2.1%	395	2.2%
Languages	560	4.8%	70	3.6%	80	1.8%	710	3.9%
Historical and philosophical studies	405	3.5%	20	1.0%	100	2.2%	525	2.9%
Creative arts & design	720	6.2%	60	3.2%	150	3.4%	935	5.2%
Education	635	5.4%	375	19.4%	1,105	25.0%	2,110	11.7%
Combined	80	0.7%	55	2.9%	5	0.1%	140	0.8%
<b>Total (All Subjects)</b>	<b>11,715</b>		<b>1,920</b>		<b>4,430</b>		<b>18,065</b>	

Source : HESA

**Table 4b: Proportion of Northern Ireland domiciled students gaining qualifications at UK HEIs in Broad and Narrow STEM subjects by level of qualification - 2014/15**

Subject Area	First degree		Other Undergraduate		Postgraduate		Total	
Broad STEM	5,815	49.7%	790	41.0%	1,730	39.1%	8,335	46.1%
Narrow STEM	2,945	25.1%	335	17.4%	755	17.1%	4,030	22.3%
<b>Total (All Subjects)</b>	<b>11,715</b>		<b>1,920</b>		<b>4,430</b>		<b>18,065</b>	

Source : HESA

**Table 4c: Northern Ireland domiciled students gaining qualifications at UK HEIs by qualifications gained and gender - 2014/15**

Subject Area	Male		Female		Total
Medicine & dentistry	310	40.9%	450	59.1%	765
Subjects allied to medicine	440	16.4%	2,250	83.6%	2,690
Biological sciences	555	40.9%	800	59.1%	1,355
Veterinary science	10	32.1%	20	67.9%	30
Agriculture & related subjects	80	35.7%	140	64.3%	220
Physical sciences	330	58.4%	235	41.6%	565
Mathematical sciences	110	55.1%	90	45.4%	195
Computer science	790	75.0%	260	25.0%	1,050
Engineering & technology	720	82.9%	150	17.1%	870
Architecture, building & planning	405	67.2%	200	32.8%	605
Social studies	585	33.9%	1,140	66.1%	1,725
Law	355	40.0%	530	60.0%	885
Business & administrative studies	1,090	47.2%	1,220	52.8%	2,310
Mass communications and documentation	160	40.1%	235	60.2%	395
Languages	220	30.7%	495	69.3%	710
Historical and philosophical studies	285	54.0%	240	45.8%	525
Creative arts & design	390	41.6%	545	58.3%	935
Education	590	28.0%	1,520	71.9%	2,110
Combined	80	56.7%	60	43.3%	140
<b>Total (All Subjects)</b>	<b>7,490</b>	<b>41.5%</b>	<b>10,575</b>	<b>58.5%</b>	<b>18,065</b>

Source : HESA

**Table 4d: Proportion of Northern Ireland domiciled students gaining qualifications at UK HEIs in Broad and Narrow STEM subjects by gender - 2014/15**

Subject Area	Male		Female		Total
Broad STEM	3,745	50.0%	4,590	43.4%	8,335
Narrow STEM	2,500	33.4%	1,535	14.5%	4,030
<b>Total (All Subjects)</b>	<b>7,490</b>		<b>10,575</b>		<b>18,065</b>

Source : HESA

To prevent the identification of individuals, figures in the attached table are rounded to the nearest 5, with 0, 1, 2 rounded to 0. Due to rounding, the sum of numbers in each row or column may not match the total shown.

**Table 5: Northern Ireland domiciled students gaining first degrees at UK Higher Education Institutions by subject area, degree classification and gender - 2014/15**

Subject Area	Gender	Degree Classification					Total
		First class honours	class, upper division	Second class, lower division	Third class/ Pass	Unclassified/ Classification	
Medicine & dentistry	Male	10	10	0	0	195	215
	Female	5	20	0	0	270	295
	Total	15	30	0	0	465	510
Subjects allied to medicine	Male	75	155	65	10	10	320
	Female	380	690	325	45	65	1,505
	Total	455	845	390	55	75	1,820
Biological sciences	Male	65	195	110	25	5	395
	Female	90	340	145	10	0	580
	Total	155	530	255	30	5	975
Veterinary science	Male	0	0	0	0	5	5
	Female	5	5	0	0	10	20
	Total	5	5	0	0	15	25
Agriculture & related subjects	Male	0	40	15	5	0	60
	Female	30	50	10	0	0	85
	Total	30	90	25	5	0	145
Physical sciences	Male	60	95	55	5	0	215
	Female	35	90	25	5	0	155
	Total	95	185	80	10	5	375
Mathematical sciences	Male	35	25	20	10	0	90
	Female	30	30	15	10	0	85
	Total	65	55	35	15	0	170
Computer science	Male	155	215	160	40	5	575
	Female	45	95	35	15	5	195
	Total	200	310	195	55	10	770
Engineering & technology	Male	175	215	125	25	5	545
	Female	30	50	20	5	5	105
	Total	205	265	145	30	10	655
Architecture, building & planning	Male	50	110	70	30	5	265
	Female	15	50	25	15	0	105
	Total	65	165	95	40	5	370
Social studies	Male	60	220	100	15	0	400
	Female	90	470	190	20	5	775
	Total	150	690	290	35	5	1,175
Law	Male	15	140	40	5	0	200
	Female	35	225	75	5	5	345
	Total	50	365	115	10	5	545
Business & administrative studies	Male	90	375	205	20	5	695
	Female	165	430	185	15	0	800
	Total	255	805	395	35	5	1,495
Mass communications and documentation	Male	15	60	35	5	0	115
	Female	25	90	55	0	0	170
	Total	40	150	85	5	0	285
Languages	Male	30	100	30	5	0	170
	Female	55	250	80	10	0	395
	Total	85	350	110	15	0	560
Historical and philosophical studies	Male	20	135	50	5	0	210
	Female	25	130	35	5	0	195
	Total	50	265	80	10	0	405
Creative arts & design	Male	55	160	55	10	5	290
	Female	90	235	85	15	5	430
	Total	145	400	140	25	10	720
Education	Male	20	60	25	5	0	110
	Female	110	295	95	15	5	525
	Total	130	355	120	20	5	635
Combined	Male	5	15	10	5	10	50
	Female	0	10	10	0	10	30
	Total	5	30	20	5	20	80
All First Degrees	Male	935	2,340	1,180	215	260	4,925
	Female	1,260	3,550	1,405	185	390	6,790
	Total	2,195	5,890	2,585	400	645	11,715

Source : HESA

To prevent the identification of individuals, figures in the attached table are rounded to the nearest 5, with 0, 1, 2 rounded to 0. Due to rounding, the sum of numbers in each row or column may not match the total shown.

**Table 5a: Northern Ireland domiciled students gaining first degrees at UK HEIs by degree classification and gender - 2014/15**

Gender	Degree Classification					Total
	First class honours	Second class, upper division	Second class, lower division	Third class/ Pass	Unclassified/ Classification	
Male	935	2,340	1,180	215	260	4,925
Female	1,260	3,550	1,405	185	390	6,790
<b>Total</b>	<b>2,195</b>	<b>5,890</b>	<b>2,585</b>	<b>400</b>	<b>645</b>	<b>11,715</b>

**Table 5b: Proportion of Northern Ireland domiciled students gaining first degrees at UK HEIs by degree classification and gender - 2014/15**

Gender	Degree Classification				First Class or Upper second Class
	First class honours	Second class, upper division	Second class, lower division	Third class/ Pass	
Male	20.0%	50.1%	25.3%	4.6%	70.1%
Female	19.7%	55.5%	22.0%	2.9%	75.2%
<b>Total</b>	<b>19.8%</b>	<b>53.2%</b>	<b>23.4%</b>	<b>3.6%</b>	<b>73.0%</b>

Source : HESA

To prevent the identification of individuals, figures in the attached table are rounded to the nearest 5, with 0, 1, 2 rounded to 0. Due to rounding, the sum of numbers in each row or column may not match the total shown.

Table 6: Students gaining qualifications at Northern Ireland HEIs by level of qualification, mode of study and country of domicile - 2005/06 to 2014/15

Level and Year	First Degree						Other Undergraduate						Postgraduate						Total						
	Country of domicile						Country of domicile						Country of domicile						Country of domicile						
	NI	GB	RoI	Other EU	Non EU	Total	NI	GB	RoI	Other EU	Non EU	Total	NI	GB	RoI	Other EU	Non EU	Total	NI	GB	RoI	Other EU	Non EU	Total	
Full-time	2005/06	6,415	65	450	15	170	7,110	590	0	20	5	5	620	1,575	30	365	60	310	2,345	8,580	95	835	80	485	10,075
	2006/07	6,665	85	440	40	230	7,460	565	0	20	5	10	600	1,165	30	165	50	225	1,635	8,395	115	630	95	465	9,695
	2007/08	6,780	80	360	40	170	7,430	435	0	20	0	10	465	1,190	25	200	45	220	1,675	8,400	110	580	90	395	9,575
	2008/09	6,810	100	395	30	200	7,535	325	0	20	0	5	350	1,345	50	250	50	295	1,990	8,480	150	660	80	500	9,875
	2009/10	6,755	85	260	30	160	7,290	315	0	30	5	20	370	1,245	55	190	60	235	1,785	8,310	140	485	95	415	9,445
	2010/11	6,740	160	250	40	185	7,375	155	0	5	0	30	190	1,605	60	420	75	345	2,505	8,500	215	675	115	565	10,070
	2011/12	7,535	165	280	25	190	8,195	250	0	5	5	85	345	1,605	55	390	75	365	2,490	9,395	220	680	100	640	11,030
	2012/13	7,475	155	285	30	210	8,155	305	0	10	5	170	490	1,595	60	340	70	675	2,735	9,375	215	630	105	1,055	11,385
	2013/14	7,235	205	235	45	275	7,995	335	5	5	0	440	785	1,540	50	270	70	700	2,630	9,110	260	510	115	1,415	11,410
	2014/15	7,320	200	260	40	545	8,360	375	25	55	5	315	770	1,605	60	265	55	540	2,525	9,300	280	580	95	1,405	11,660
Part-time	2005/06	1,075	5	80	5	0	1,165	2,650	55	120	5	10	2,840	1,505	165	260	25	95	2,050	5,230	225	460	35	105	6,055
	2006/07	910	0	70	0	5	990	2,265	0	125	5	5	2,400	1,575	190	235	40	50	2,090	4,755	195	435	45	60	5,485
	2007/08	945	0	70	0	5	1,020	2,545	15	155	5	10	2,730	1,450	165	260	45	55	1,975	4,940	180	485	50	75	5,725
	2008/09	1,010	5	65	0	5	1,085	1,855	80	275	0	5	2,215	1,380	180	310	30	70	1,970	4,245	265	645	35	85	5,275
	2009/10	1,045	5	65	5	5	1,125	1,910	100	240	0	45	2,290	1,645	175	385	30	120	2,355	4,600	280	685	35	170	5,770
	2010/11	885	5	50	0	5	945	1,900	60	505	0	65	2,535	1,475	190	355	45	55	2,115	4,255	260	910	45	125	5,595
	2011/12	845	15	50	0	5	910	1,790	40	575	5	205	2,620	1,645	180	390	35	60	2,305	4,275	235	1,010	40	265	5,830
	2012/13	880	5	55	0	5	950	1,615	85	790	20	25	2,540	1,620	245	250	25	40	2,180	4,120	335	1,100	45	75	5,670
	2013/14	855	10	40	0	10	920	1,160	65	85	0	5	1,315	1,685	330	205	10	35	2,270	3,700	405	330	15	55	4,500
	2014/15	880	15	25	0	0	925	1,060	75	55	0	10	1,200	1,685	295	210	15	25	2,225	3,625	385	285	15	35	4,360
Total	2005/06	7,485	70	530	20	170	8,275	3,245	55	140	5	15	3,460	3,080	195	625	85	405	4,390	13,810	320	1,295	110	595	16,130
	2006/07	7,575	85	510	40	235	8,450	2,830	0	145	10	15	3,000	2,740	220	400	90	275	3,725	13,150	310	1,065	140	525	15,180
	2007/08	7,725	80	430	40	175	8,450	2,980	15	175	5	20	3,195	2,640	190	460	90	275	3,650	13,340	290	1,065	140	470	15,300
	2008/09	7,820	105	460	30	205	8,620	2,180	80	295	0	10	2,565	2,725	230	560	80	365	3,960	12,725	415	1,305	115	585	15,150
	2009/10	7,800	90	325	35	165	8,415	2,220	100	270	5	60	2,660	2,885	230	575	90	355	4,145	12,910	420	1,170	130	585	15,215
	2010/11	7,625	165	305	40	190	8,320	2,055	60	510	0	100	2,725	3,080	250	775	120	405	4,620	12,760	475	1,585	155	690	15,665
	2011/12	8,380	180	325	25	190	9,100	2,040	40	580	10	290	2,965	3,250	235	780	105	425	4,800	13,670	455	1,690	140	905	16,860
	2012/13	8,360	160	340	35	215	9,105	1,920	85	800	20	200	3,030	3,215	305	590	95	715	4,915	13,495	550	1,730	150	1,130	17,055
	2013/14	8,090	220	275	45	285	8,915	1,495	65	90	0	445	2,100	3,225	380	475	85	740	4,900	12,810	665	840	130	1,470	15,910
	2014/15	8,200	215	285	40	550	9,285	1,435	100	110	5	325	1,975	3,290	350	475	65	565	4,750	12,930	665	865	110	1,435	16,010

Source : HESA

To prevent the identification of individuals, figures in the attached table are rounded to the nearest 5, with 0, 1, 2 rounded to 0. Due to rounding, the sum of numbers in each row or column may not match the total shown.



**Table 6a: Students gaining qualifications at NI HEIs by mode of study and country of domicile - 2005/06 to 2014/15**

Mode and Year	Country of domicile										Non NI Domiciled	Non NI Domiciled %		
	NI	NI %	GB	GB %	Rol	Rol %	Other EU	Other EU %	Non EU	Non EU %			Total	
Full-time	2005/06	8,580	85.2%	95	1.0%	835	8.3%	80	0.8%	485	4.8%	10,075	1,495	14.8%
	2006/07	8,395	86.6%	115	1.2%	630	6.5%	95	1.0%	465	4.8%	9,695	1,305	13.5%
	2007/08	8,400	87.7%	110	1.1%	580	6.1%	90	0.9%	395	4.1%	9,575	1,175	12.3%
	2008/09	8,480	85.9%	150	1.5%	660	6.7%	80	0.8%	500	5.1%	9,875	1,390	14.1%
	2009/10	8,310	88.0%	140	1.5%	485	5.1%	95	1.0%	415	4.4%	9,445	1,135	12.0%
	2010/11	8,500	84.4%	215	2.2%	675	6.7%	115	1.1%	565	5.6%	10,070	1,570	15.6%
	2011/12	9,395	85.2%	220	2.0%	680	6.1%	100	0.9%	640	5.8%	11,030	1,635	14.8%
	2012/13	9,375	82.4%	215	1.9%	630	5.6%	105	0.9%	1,055	9.3%	11,385	2,010	17.6%
	2013/14	9,110	79.8%	260	2.3%	510	4.5%	115	1.0%	1,415	12.4%	11,410	2,305	20.2%
	2014/15	9,300	79.8%	280	2.4%	580	5.0%	95	0.8%	1,405	12.0%	11,660	2,355	20.2%
Part-time	2005/06	5,230	86.3%	225	3.7%	460	7.6%	35	0.6%	105	1.8%	6,055	825	13.7%
	2006/07	4,755	86.7%	195	3.6%	435	7.9%	45	0.8%	60	1.1%	5,485	735	13.4%
	2007/08	4,940	86.3%	180	3.2%	485	8.5%	50	0.9%	75	1.3%	5,725	790	13.8%
	2008/09	4,245	80.5%	265	5.0%	645	12.2%	35	0.7%	85	1.6%	5,275	1,030	19.5%
	2009/10	4,600	79.7%	280	4.9%	685	11.9%	35	0.6%	170	2.9%	5,770	1,170	20.3%
	2010/11	4,255	76.1%	260	4.6%	910	16.3%	45	0.8%	125	2.3%	5,595	1,340	23.9%
	2011/12	4,275	73.3%	235	4.0%	1,010	17.3%	40	0.7%	265	4.6%	5,830	1,550	26.6%
	2012/13	4,120	72.7%	335	5.9%	1,100	19.4%	45	0.8%	75	1.3%	5,670	1,550	27.3%
	2013/14	3,700	82.2%	405	9.0%	330	7.3%	15	0.3%	55	1.2%	4,500	800	17.8%
	2014/15	3,625	83.3%	385	8.9%	285	6.6%	15	0.4%	35	0.8%	4,350	725	16.7%
Total	2005/06	13,810	85.6%	320	2.0%	1,295	8.0%	110	0.7%	595	3.7%	16,130	2,320	14.4%
	2006/07	13,150	86.6%	310	2.0%	1,065	7.0%	140	0.9%	525	3.5%	15,180	2,040	13.4%
	2007/08	13,340	87.2%	290	1.9%	1,065	7.0%	140	0.9%	470	3.1%	15,300	1,965	12.8%
	2008/09	12,725	84.0%	415	2.7%	1,305	8.6%	115	0.8%	585	3.9%	15,150	2,420	16.0%
	2009/10	12,910	84.8%	420	2.8%	1,170	7.7%	130	0.9%	585	3.8%	15,215	2,305	15.2%
	2010/11	12,760	81.4%	475	3.0%	1,585	10.1%	155	1.0%	690	4.4%	15,665	2,910	18.6%
	2011/12	13,670	81.1%	455	2.7%	1,690	10.0%	140	0.8%	905	5.4%	16,860	3,185	18.9%
	2012/13	13,495	79.1%	550	3.2%	1,730	10.1%	150	0.9%	1,130	6.6%	17,055	3,560	20.9%
	2013/14	12,810	80.5%	665	4.2%	840	5.3%	130	0.8%	1,470	9.2%	15,910	3,105	19.5%
	2014/15	12,930	80.8%	665	4.2%	865	5.4%	110	0.7%	1,435	9.0%	16,010	3,080	19.2%

Source : HESA

**Table 6b: Percentage change in qualifications gained by students at NI HEIs by mode of study and country of domicile between 2005/06 and 2014/15**

Mode	Country of domicile						Non NI Domicile
	NI	GB	Rol	Other EU	Non EU	Total	
Full-time	8.4%	187.6%	-30.4%	20.5%	188.7%	15.7%	57.7%
Part-time	-30.6%	72.8%	-37.9%	-50.0%	-68.2%	-28.1%	-12.3%
Total	-6.4%	107.5%	-33.1%	-0.9%	142.3%	-0.8%	32.7%

Source : HESA

**Table 6c: Percentage change in qualifications gained by students at NI HEIs by mode of study and country of domicile between 2013/14 and 2014/15**

Mode	Country of domicile						Non NI Domicile
	NI	GB	Rol	Other EU	Non EU	Total	
Full-time	2.1%	6.9%	13.5%	-19.0%	-0.8%	2.2%	2.3%
Part-time	-2.0%	-4.0%	-13.0%	30.8%	-37.0%	-3.3%	-9.4%
Total	0.9%	0.3%	3.1%	-14.0%	-2.2%	0.6%	-0.7%

Source : HESA

To prevent the identification of individuals, figures in the attached table are rounded to the nearest 5, with 0, 1, 2 rounded to 0. Due to rounding, the sum of numbers in each row or column may not match the total shown.

**Table 6d: Students gaining qualifications at NI HEIs by level of qualification, mode of study - 2005/06 to 2014/15**

Mode and Year	Level of Qualification						Total	
	First Degree	First Degree %	Other Undergraduate	Other Undergraduate %	Postgraduate	Postgraduate %		
Full-time	2005/06	7,110	70.6%	620	6.2%	2,345	23.3%	10,075
	2006/07	7,460	76.9%	600	6.2%	1,635	16.9%	9,695
	2007/08	7,430	77.6%	465	4.9%	1,675	17.5%	9,575
	2008/09	7,535	76.3%	350	3.5%	1,990	20.2%	9,875
	2009/10	7,290	77.2%	370	3.9%	1,785	18.9%	9,445
	2010/11	7,375	73.2%	190	1.9%	2,505	24.9%	10,070
	2011/12	8,195	74.3%	345	3.1%	2,490	22.6%	11,030
	2012/13	8,155	71.7%	490	4.3%	2,735	24.0%	11,385
	2013/14	7,995	70.1%	785	6.9%	2,630	23.1%	11,410
	2014/15	8,360	71.7%	770	6.6%	2,525	21.7%	11,660
Part-time	2005/06	1,165	19.3%	2,840	46.9%	2,050	33.8%	6,055
	2006/07	990	18.1%	2,400	43.8%	2,090	38.1%	5,485
	2007/08	1,020	17.8%	2,730	47.7%	1,975	34.5%	5,725
	2008/09	1,085	20.5%	2,215	42.0%	1,970	37.4%	5,275
	2009/10	1,125	19.5%	2,290	39.7%	2,355	40.8%	5,770
	2010/11	945	16.9%	2,535	45.3%	2,115	37.8%	5,595
	2011/12	910	15.6%	2,620	44.9%	2,305	39.5%	5,830
	2012/13	950	16.7%	2,540	44.8%	2,180	38.5%	5,670
	2013/14	920	20.4%	1,315	29.2%	2,270	50.4%	4,500
	2014/15	925	21.3%	1,200	27.6%	2,225	51.1%	4,350
Total	2005/06	8,275	51.3%	3,460	21.5%	4,390	27.2%	16,130
	2006/07	8,450	55.7%	3,000	19.8%	3,725	24.5%	15,180
	2007/08	8,450	55.2%	3,195	20.9%	3,650	23.9%	15,300
	2008/09	8,620	56.9%	2,565	16.9%	3,960	26.1%	15,150
	2009/10	8,415	55.3%	2,660	17.5%	4,145	27.2%	15,215
	2010/11	8,320	53.1%	2,725	17.4%	4,620	29.5%	15,665
	2011/12	9,100	54.0%	2,965	17.6%	4,800	28.5%	16,860
	2012/13	9,105	53.4%	3,030	17.8%	4,915	28.8%	17,055
	2013/14	8,915	56.0%	2,100	13.2%	4,900	30.8%	15,910
	2014/15	9,285	58.0%	1,975	12.3%	4,750	29.7%	16,010

Source : HESA

**Table 6e: Percentage change in qualifications gained by students at NI HEIs by level of qualification and mode of study between 2005/06 and 2014/15**

Mode	Level of Qualification			Total
	First Degree	Other Undergraduate	Postgraduate	
Full-time	17.6%	24.3%	7.7%	15.7%
Part-time	-20.7%	-57.7%	8.6%	-28.1%
Total	12.2%	-43.0%	8.1%	-0.8%

Source : HESA

**Table 6f: Percentage change in qualifications gained by students at NI HEIs by level of qualification and mode of study between 2013/14 and 2014/15**

Mode	Level of Qualification			Total
	First Degree	Other Undergraduate	Postgraduate	
Full-time	4.6%	-1.7%	-4.0%	2.2%
Part-time	0.9%	-8.6%	-2.0%	-3.3%
Total	4.2%	-6.0%	-3.1%	0.6%

Source : HESA

To prevent the identification of individuals, figures in the attached table are rounded to the nearest 5, with 0, 1, 2 rounded to 0. Due to rounding, the sum of numbers in each row or column may not match the total shown.

**Table 7: Students gaining qualifications at NI Higher Education Institutions by qualifications gained, country of domicile, mode of study and gender - 2014/15**

Domicile	Mode	Gender	Undergraduate (UG)			Postgraduate (PG)					Total
			First Degree	Other UG	All UG	Higher Degrees		Other Postgraduate		All PG	
						Doctorate	Other Higher Degrees	PGCE	Other PG		
Northern Ireland	Full-time	Male	3,075	210	3,285	95	425	75	120	710	3,995
		Female	4,245	170	4,410	100	395	190	210	895	5,305
		Total	7,320	375	7,695	195	815	265	330	1,605	9,300
	Part-time	Male	395	325	720	40	225	5	345	620	1,340
		Female	485	735	1,220	30	290	5	745	1,065	2,290
		Total	880	1,060	1,940	70	515	10	1090	1,685	3,625
	Total	Male	3,470	530	4,005	135	650	80	465	1,330	5,335
		Female	4,730	905	5,635	130	680	195	950	1,960	7,595
		Total	8,200	1,435	9,635	265	1330	275	1420	3,290	12,930
Great Britain	Full-time	Male	95	15	105	10	15	0	5	30	140
		Female	105	10	115	5	15	0	5	25	140
		Total	200	25	220	20	30	0	5	60	280
	Part-time	Male	5	25	35	0	20	0	30	55	90
		Female	10	50	60	0	35	0	200	240	300
		Total	15	75	95	5	60	0	230	295	385
	Total	Male	100	40	140	15	35	0	35	85	225
		Female	115	60	175	10	55	0	205	265	440
		Total	215	100	315	25	90	0	240	350	665
Republic of Ireland	Full-time	Male	90	20	110	10	85	5	20	120	230
		Female	170	30	205	20	100	10	15	145	350
		Total	260	55	315	30	185	15	35	265	580
	Part-time	Male	10	15	25	10	40	0	35	80	105
		Female	15	40	55	10	60	0	55	125	180
		Total	25	55	80	20	100	0	85	210	285
	Total	Male	100	35	135	20	125	5	55	200	335
		Female	185	75	260	30	165	10	70	275	530
		Total	285	110	395	50	290	15	120	475	865
Other EU	Full-time	Male	30	0	30	5	15	0	0	20	50
		Female	10	0	10	10	25	0	0	30	40
		Total	40	5	40	15	35	0	0	55	95
	Part-time	Male	0	0	0	0	0	0	5	5	5
		Female	0	0	5	0	5	0	5	5	10
		Total	0	0	5	0	5	0	10	15	15
	Total	Male	30	0	30	5	15	0	5	30	60
		Female	10	5	15	10	25	0	5	40	50
		Total	40	5	45	15	40	0	10	65	110
Non EU	Full-time	Male	310	180	490	35	165	0	10	210	700
		Female	240	135	370	30	285	0	15	330	700
		Total	545	315	860	65	450	0	25	540	1,405
	Part-time	Male	0	5	10	5	5	0	0	10	20
		Female	0	0	0	5	5	0	5	10	15
		Total	0	10	10	10	10	0	5	25	35
	Total	Male	310	190	500	40	175	0	10	225	720
		Female	240	135	375	35	290	0	20	340	715
		Total	550	325	870	75	460	0	30	565	1,435
All Students	Full-time	Male	3,595	430	4,025	155	705	75	155	1,095	5,115
		Female	4,765	345	5,110	165	820	205	245	1,430	6,540
		Total	8,360	770	9,135	325	1520	280	400	2,525	11,660
	Part-time	Male	415	370	785	60	295	5	415	775	1,560
		Female	515	830	1,345	45	395	5	1000	1,450	2,790
		Total	925	1,200	2,125	105	690	10	1420	2,225	4,350
	Total	Male	4,010	800	4,805	215	1000	80	575	1,870	6,675
		Female	5,280	1,175	6,455	215	1210	210	1245	2,880	9,330
		Total	9,285	1,975	11,260	430	2210	290	1820	4,750	16,010

Source : HESA

To prevent the identification of individuals, figures in the attached table are rounded to the nearest 5, with 0, 1, 2 rounded to 0. Due to rounding, the sum of numbers in each row or column may not match the total shown.

**Table 7a: Students gaining qualifications at NI HEIs by level of qualification, country of domicile and mode of study - 2014/15**

Country of domicile	First Degree			Other Undergraduate			Postgraduate			Total		
	Full-time	Part-time	Total	Full-time	Part-time	Total	Full-time	Part-time	Total	Full-time	Part-time	Total
NI	7,320	880	8,200	375	1,060	1,435	1,605	1,685	3,290	9,300	3,625	12,930
GB	200	15	215	25	75	100	60	295	350	280	385	665
ROI	260	25	285	55	55	110	265	210	475	580	285	865
Other EU	40	0	40	5	0	5	55	15	65	95	15	110
Non EU	545	0	550	315	10	325	540	25	565	1,405	35	1,435
<b>Total</b>	<b>8,360</b>	<b>925</b>	<b>9,285</b>	<b>770</b>	<b>1,200</b>	<b>1,975</b>	<b>2,525</b>	<b>2,225</b>	<b>4,750</b>	<b>11,660</b>	<b>4,350</b>	<b>16,010</b>

Source : HESA

**Table 7b: Mode of Study breakdown of students gaining qualifications at NI HEIs by level of qualification and country of domicile - 2014/15**

Country of domicile	First Degree			Other Undergraduate			Postgraduate			Total		
	Full-time	Part-time	Total	Full-time	Part-time	Total	Full-time	Part-time	Total	Full-time	Part-time	Total
NI	89.3%	10.7%	8,200	26.2%	73.8%	1,435	48.8%	51.2%	3,290	72.0%	28.0%	12,930
GB	92.1%	7.9%	215	23.2%	76.8%	100	16.5%	83.5%	350	41.9%	58.1%	665
ROI	91.5%	8.5%	285	49.5%	50.5%	110	56.1%	43.9%	475	66.9%	33.1%	865
Other EU	95.0%	5.0%	40	60.0%	40.0%	5	80.3%	19.7%	65	84.7%	15.3%	110
Non EU	99.6%	0.4%	550	97.5%	2.5%	325	95.8%	4.2%	565	97.6%	2.4%	1,435
<b>Total</b>	<b>90.0%</b>	<b>10.0%</b>	<b>9,285</b>	<b>39.1%</b>	<b>60.9%</b>	<b>1,975</b>	<b>53.2%</b>	<b>46.8%</b>	<b>4,750</b>	<b>72.8%</b>	<b>27.2%</b>	<b>16,010</b>

Source : HESA

**Table 7c: Students gaining qualifications at NI HEIs by country of domicile and level of qualification - 2014/15**

Country of domicile	First Degree		Other Undergraduate		Postgraduate		Total	
	First Degree	First Degree %	Other Undergraduate	Other Undergraduate	Postgraduate	Postgraduate %	Total	Total %
NI	8,200	88.3%	1,435	72.8%	3,290	69.3%	12,930	80.8%
GB	215	2.3%	100	5.0%	350	7.4%	665	4.2%
ROI	285	3.1%	110	5.5%	475	10.0%	865	5.4%
Other EU	40	0.4%	5	0.3%	65	1.4%	110	0.7%
Non EU	550	5.9%	325	16.4%	565	11.9%	1,435	9.0%
<b>Total</b>	<b>9,285</b>		<b>1,975</b>		<b>4,750</b>		<b>16,010</b>	

Source : HESA

To prevent the identification of individuals, figures in the attached table are rounded to the nearest 5, with 0, 1, 2 rounded to 0. Due to rounding, the sum of numbers in each row or column may not match the total shown.

**Table 7d: Level of qualification breakdown of students gaining qualifications at NI HEIs by gender - 2014/15**

Gender		Level of Qualification						
		First Degree	First Degree %	Other Undergraduate	Undergraduate %	Postgraduate	Postgraduate %	Total
Male		4,010	60.0%	800	12.0%	1,870	28.0%	6,675
Female		5,280	56.6%	1,175	12.6%	2,880	30.9%	9,330
	Total	9,285	58.0%	1,975	12.3%	4,750	29.7%	16,010

Source : HESA

**Table 7e: Gender breakdown of students gaining qualifications at NI HEIs by level of qualification - 2014/15**

Gender		Level of Qualification						Total	Total %
		First Degree	First Degree %	Other Undergraduate	Undergraduate %	Postgraduate	Postgraduate %		
Male		4,010	43.2%	800	40.5%	1,870	39.4%	6,675	41.7%
Female		5,280	56.8%	1,175	59.5%	2,880	60.6%	9,330	58.3%
	Total	9,285		1,975		4,750		16,010	

Source : HESA

**Table 7f: Mode of study breakdown of students gaining qualifications at NI HEIs by level of qualification and gender - 2014/15**

Mode and Gender		Level of Qualification						Total	Total %
		First Degree	First Degree %	Other Undergraduate	Undergraduate %	Postgraduate	Postgraduate %		
Male	Full-time	3,595	89.7%	430	53.6%	1,095	58.5%	5,115	76.6%
	Part-time	415	10.3%	370	46.4%	775	41.5%	1,560	23.4%
	Total	4,010		800		1,870		6,675	
Female	Full-time	4,765	90.3%	345	29.3%	1,430	49.7%	6,540	70.1%
	Part-time	515	9.7%	830	70.7%	1,450	50.3%	2,790	29.9%
	Total	5,280		1,175		2,880		9,330	
Total	Full-time	8,360	90.0%	770	39.1%	2,525	53.2%	11,660	72.8%
	Part-time	925	10.0%	1,200	60.9%	2,225	46.8%	4,350	27.2%
	Total	9,285		1,975		4,750		16,010	

Source : HESA

To prevent the identification of individuals, figures in the attached table are rounded to the nearest 5, with 0, 1, 2 rounded to 0. Due to rounding, the sum of numbers in each row or column may not match the total shown.

**Table 8: Students gaining qualifications at NI Higher Education Institutions by qualifications gained, subject area and gender - 2014/15**

Qualification	Gender	Medicine & dentistry	Subjects allied to medicine	Biological sciences	Agriculture & related subjects	Physical sciences	Mathematical sciences	Computer science	Engineering & technology	Architecture, building & planning	Social studies	Law	Business & administrative studies	Mass communications and documentation	Languages	Historical and philosophical studies	Creative arts & design	Education	Combined	Total
First Degree	Male	125	255	230	45	140	45	530	510	240	340	150	735	75	110	165	190	75	45	4010
	Female	165	1220	450	65	95	55	165	110	95	655	250	785	120	290	170	255	315	25	5280
	Total	290	1475	680	110	235	100	690	615	335	995	400	1520	195	395	335	450	390	75	9285
Other Undergraduate	Male	0	40	30	0	30	0	60	120	10	45	0	325	0	30	10	10	60	30	800
	Female	0	395	20	0	5	0	15	40	0	65	5	335	10	45	5	15	195	25	1,175
	Total	0	435	50	0	30	5	75	155	10	110	5	665	10	80	15	25	255	55	1,975
All Undergraduate	Male	125	300	260	45	170	45	590	630	250	385	150	1,060	75	140	175	200	135	75	4,805
	Female	165	1,615	470	65	100	55	180	145	100	720	255	1,120	125	335	170	270	510	50	6,455
	Total	290	1,910	730	110	270	100	770	775	350	1,105	405	2,180	205	475	345	475	645	125	11,260
Doctorate	Male	15	10	20	0	50	5	5	40	5	20	0	5	0	5	5	25	5	0	215
	Female	20	10	35	0	50	0	0	15	5	20	5	10	0	10	5	20	10	0	215
	Total	35	20	55	0	95	5	5	60	5	45	10	10	0	15	10	45	15	0	430
Other Higher Degrees	Male	25	40	70	10	40	5	120	85	45	60	80	255	20	20	40	40	50	0	1,000
	Female	30	125	130	20	35	0	30	20	25	100	95	320	35	50	25	60	105	0	1,210
	Total	55	165	195	35	75	5	150	105	70	160	180	580	55	70	65	100	155	0	2,210
PGCE	Male	0	0	0	0	0	0	0	0	0	0	0	0	0	0	0	0	80	0	80
	Female	0	0	0	0	0	0	0	0	0	0	0	0	0	0	0	0	210	0	210
	Total	0	0	0	0	0	0	0	0	0	0	0	0	0	0	0	0	290	0	290
Other Postgraduate	Male	45	55	10	5	5	0	15	15	85	55	65	75	15	0	5	0	130	0	575
	Female	80	430	35	35	10	0	15	5	65	190	85	85	15	0	5	5	180	0	1,245
	Total	125	485	50	40	15	0	30	20	150	245	150	160	30	0	5	5	310	0	1,820
All Postgraduate	Male	85	100	100	20	95	5	140	140	130	135	150	335	35	20	50	65	265	0	1,870
	Female	130	570	200	55	90	0	50	45	95	310	185	415	50	60	35	85	500	5	2,880
	Total	215	670	300	75	185	5	190	185	225	450	335	750	85	85	85	150	765	5	4,750
Total	Male	210	400	360	60	265	55	730	765	380	520	300	1395	115	160	220	270	400	75	6,675
	Female	300	2180	665	125	190	55	230	190	190	1030	440	1535	175	395	205	355	1010	55	9,330
	Total	505	2580	1030	185	455	105	955	955	575	1550	740	2935	290	555	425	620	1410	130	16,010

Source : HESA

To prevent the identification of individuals, figures in the attached table are rounded to the nearest 5, with 0, 1, 2 rounded to 0. Due to rounding, the sum of numbers in each row or column may not match the total shown.

**Table 8a: Students gaining qualifications at NI HEIs by qualifications gained and subject area - 2014/15**

Subject Area	First degree		Other Undergraduate		Postgraduate		Total	
Medicine & dentistry	290	3.1%	0	0.0%	215	4.5%	505	3.2%
Subjects allied to medicine	1,475	15.9%	435	22.0%	670	14.1%	2,580	16.1%
Biological sciences	680	7.3%	50	2.5%	300	6.3%	1,030	6.4%
Agriculture & related subjects	110	1.2%	0	0.1%	75	1.6%	185	1.2%
Physical sciences	235	2.5%	30	1.6%	185	3.9%	455	2.8%
Mathematical sciences	100	1.1%	5	0.2%	5	0.1%	105	0.7%
Computer science	690	7.5%	75	3.9%	190	4.0%	955	6.0%
Engineering & technology	615	6.6%	155	7.9%	185	3.9%	955	6.0%
Architecture, building & planning	335	3.6%	10	0.6%	225	4.8%	575	3.6%
Social studies	995	10.7%	110	5.5%	450	9.5%	1,550	9.7%
Law	400	4.3%	5	0.2%	335	7.1%	740	4.6%
Business & administrative studies	1,520	16.4%	665	33.6%	750	15.8%	2,935	18.3%
Mass communications and documentation	195	2.1%	10	0.5%	85	1.8%	290	1.8%
Languages	395	4.3%	80	4.0%	85	1.7%	555	3.5%
Historical and philosophical studies	335	3.6%	15	0.7%	85	1.7%	425	2.7%
Creative arts & design	450	4.8%	25	1.2%	150	3.1%	620	3.9%
Education	390	4.2%	255	12.9%	765	16.1%	1,410	8.8%
Combined	75	0.8%	55	2.7%	5	0.1%	130	0.8%
<b>Total (All Subjects)</b>	<b>9,285</b>		<b>1,975</b>		<b>4,750</b>		<b>16,010</b>	

Source : HESA

**Table 8b: Proportion of students gaining qualifications at NI HEIs in Broad and Narrow STEM subjects by level of qualification - 2014/15**

Subject Area	First degree		Other Undergraduate		Postgraduate		Total	
Broad STEM	4,535	48.9%	765	38.8%	2,050	43.1%	7,345	45.9%
Narrow STEM	2,325	25.0%	315	16.0%	865	18.2%	3,500	21.9%
<b>Total (All Subjects)</b>	<b>9,285</b>		<b>1,975</b>		<b>4,750</b>		<b>16,010</b>	

Source : HESA

**Table 8c: Students gaining qualifications at NI HEIs by qualifications gained and gender - 2014/15**

Subject Area	Male		Female		Total
Medicine & dentistry	210	41.2%	300	58.8%	505
Subjects allied to medicine	400	15.4%	2,180	84.5%	2,580
Biological sciences	360	35.1%	665	64.9%	1,030
Agriculture & related subjects	60	33.5%	125	66.5%	185
Physical sciences	265	57.9%	190	42.1%	455
Mathematical sciences	55	49.5%	55	50.5%	105
Computer science	730	76.2%	230	23.8%	955
Engineering & technology	765	80.2%	190	19.9%	955
Architecture, building & planning	380	66.5%	190	33.5%	575
Social studies	520	33.5%	1,030	66.5%	1,550
Law	300	40.4%	440	59.6%	740
Business & administrative studies	1,395	47.6%	1,535	52.4%	2,935
Mass communications and documentation	115	39.0%	175	61.0%	290
Languages	160	28.6%	395	71.4%	555
Historical and philosophical studies	220	51.8%	205	48.2%	425
Creative arts & design	270	43.2%	355	57.0%	620
Education	400	28.5%	1,010	71.5%	1,410
Combined	75	59.2%	55	40.8%	130
<b>Total (All Subjects)</b>	<b>6,675</b>	<b>41.7%</b>	<b>9,330</b>	<b>58.3%</b>	<b>16,010</b>

Source : HESA

**Table 8d: Proportion of students gaining qualifications at NI HEIs in Broad and Narrow STEM subjects by gender - 2014/15**

Subject Area	Male		Female		Total
Broad STEM	3,220	48.3%	4,125	44.2%	7,345
Narrow STEM	2,170	32.5%	1,330	14.3%	3,500
<b>Total (All Subjects)</b>	<b>6,675</b>		<b>9,330</b>		<b>16,010</b>

Source : HESA

To prevent the identification of individuals, figures in the attached table are rounded to the nearest 5, with 0, 1, 2 rounded to 0. Due to rounding, the sum of numbers in each row or column may not match the total shown.

**Table 9: Students gaining first degrees at NI Higher Education Institutions by subject area, degree classification and gender - 2014/15**

Subject area	Gender	Degree Classification					Total
		First class honours	Second class, upper division	Second class, lower division	Third class/ Pass	Unclassified	
Medicine & dentistry	Male	0	0	0	0	125	125
	Female	0	0	0	0	165	165
	Total	0	0	0	0	290	290
Subjects allied to medicine	Male	60	135	55	10	0	255
	Female	340	595	250	30	0	1,220
	Total	400	725	305	45	0	1,475
Biological sciences	Male	45	115	65	10	0	230
	Female	65	265	110	5	0	450
	Total	110	380	175	15	0	680
Agriculture & related subjects	Male	0	35	10	0	0	45
	Female	25	35	5	0	0	65
	Total	25	70	15	0	0	110
Physical sciences	Male	40	55	40	0	0	140
	Female	15	60	15	5	0	95
	Total	55	120	55	10	0	235
Mathematical sciences	Male	15	15	10	5	0	45
	Female	20	15	15	5	0	55
	Total	40	25	20	10	0	100
Computer science	Male	145	205	145	35	0	530
	Female	35	80	35	10	0	165
	Total	180	285	185	45	0	690
Engineering & technology	Male	170	200	110	25	0	510
	Female	30	50	20	5	0	110
	Total	200	255	130	30	0	615
Architecture, building & planning	Male	45	110	60	25	0	240
	Female	10	45	25	15	0	95
	Total	55	155	85	40	0	335
Social studies	Male	50	180	95	15	0	340
	Female	80	395	160	15	0	655
	Total	130	575	255	30	0	995
Law	Male	15	100	35	5	0	150
	Female	25	170	50	5	0	250
	Total	40	265	85	10	0	400
Business & administrative studies	Male	65	325	265	85	0	735
	Female	145	365	230	40	0	785
	Total	210	690	495	125	0	1,520
Mass communications and documentation	Male	10	45	20	0	0	75
	Female	15	60	40	0	0	120
	Total	25	105	60	0	0	195
Languages	Male	25	60	25	5	0	110
	Female	40	180	65	10	0	290
	Total	60	240	85	10	0	395
Historical and philosophical studies	Male	15	110	35	5	0	165
	Female	25	115	25	5	0	170
	Total	40	225	60	10	0	335
Creative arts & design	Male	40	110	35	5	0	190
	Female	55	145	50	5	0	255
	Total	95	255	85	10	0	450
Education	Male	15	45	15	0	0	75
	Female	85	175	45	10	5	315
	Total	100	225	55	10	5	390
Combined	Male	0	15	10	5	10	45
	Female	0	5	10	0	10	25
	Total	0	25	20	5	20	75
All First Degrees	Male	750	1,860	1,025	235	135	4,010
	Female	1,015	2,760	1,150	170	180	5,280
	Total	1,765	4,620	2,175	405	320	9,285

Source : HESA

To prevent the identification of individuals, figures in the attached table are rounded to the nearest 5, with 0, 1, 2 rounded to 0. Due to rounding, the sum of numbers in each row or column may not match the total shown.



**Table 9a: Students gaining first degrees at NI Higher Education Institutions by degree classification and gender - 2014/15**

Gender	Degree Classification					Total
	First class honours	Second class, upper division	Second class, lower division	Third class/ Pass	Unclassified/ Classification	
Male	750	1,860	1,025	235	135	4,010
Female	1,015	2,760	1,150	170	180	5,280
<b>Total</b>	<b>1,765</b>	<b>4,620</b>	<b>2,175</b>	<b>405</b>	<b>320</b>	<b>9,285</b>

Source : HESA

**Table 9b: Proportion of students gaining first degrees at NI Higher Education Institutions by degree classification and gender - 2014/15**

Gender	Degree Classification				First Class or Upper second Class
	First class honours	Second class, upper division	Second class, lower division	Third class/ Pass	
Male	19.4%	48.1%	26.5%	6.1%	67.5%
Female	19.9%	54.1%	22.5%	3.4%	74.1%
<b>Total</b>	<b>19.7%</b>	<b>51.5%</b>	<b>24.2%</b>	<b>4.5%</b>	<b>71.2%</b>

Source : HESA

To prevent the identification of individuals, figures in the attached table are rounded to the nearest 5, with 0, 1, 2 rounded to 0. Due to rounding the sum of numbers in each row or column may not match the total shown.

**Table 10: Students gaining qualifications at NI Higher Education Institutions by qualification obtained, level of study and institution - 2010/11 to 2014/15**

Level and Year	Full-time						Part-time						Total					
	Institution						Institution						Institution					
	QUB <sup>(1)</sup>	UU <sup>(2)</sup>	Stranmillis <sup>(3)</sup>	St Mary's <sup>(4)</sup>	OU <sup>(5)</sup>	Total	QUB <sup>(1)</sup>	UU <sup>(2)</sup>	Stranmillis <sup>(3)</sup>	St Mary's <sup>(4)</sup>	OU <sup>(5)</sup>	Total	QUB <sup>(1)</sup>	UU <sup>(2)</sup>	Stranmillis <sup>(3)</sup>	St Mary's <sup>(4)</sup>	OU <sup>(5)</sup>	Total
<b>First Degree</b>																		
2010/11	3,500	3,460	215	200	0	7,375	240	470	30	0	205	945	3,740	3,930	245	200	205	8,320
2011/12	3,440	4,300	220	230	0	8,195	215	445	55	0	195	910	3,655	4,745	275	230	195	9,100
2012/13	3,615	4,065	230	245	0	8,155	210	475	50	0	210	950	3,830	4,540	280	250	210	9,105
2013/14	3,635	3,900	255	205	0	7,995	195	465	10	5	240	920	3,830	4,370	265	205	240	8,915
2014/15	3,720	4,205	215	220	0	8,360	135	450	40	0	300	925	3,855	4,655	255	220	300	9,285
<b>Other Undergraduate</b>																		
2010/11	45	125	20	0	0	190	855	1,220	25	0	430	2,535	905	1,345	45	0	430	2,725
2011/12	155	175	20	0	0	345	655	1,450	25	0	485	2,615	810	1,620	45	0	485	2,960
2012/13	205	255	30	0	0	490	605	1,495	25	0	415	2,540	810	1,750	55	0	415	3,030
2013/14	245	515	25	0	0	785	330	685	30	0	270	1,315	580	1,195	55	0	270	2,100
2014/15	195	530	45	0	0	770	340	670	45	0	145	1,200	535	1,200	90	0	145	1,975
<b>All Undergraduate</b>																		
2010/11	3,545	3,585	235	200	0	7,565	1,095	1,690	55	0	635	3,480	4,640	5,275	290	200	635	11,045
2011/12	3,595	4,475	240	230	0	8,540	870	1,895	80	0	685	3,530	4,465	6,365	320	230	685	12,065
2012/13	3,825	4,320	260	245	0	8,650	815	1,970	75	0	625	3,490	4,640	6,290	335	250	625	12,135
2013/14	3,880	4,415	280	205	0	8,780	530	1,150	40	5	515	2,230	4,410	5,565	320	205	515	11,010
2014/15	3,915	4,735	265	220	0	9,135	475	1,120	85	0	450	2,125	4,390	5,855	345	220	450	11,260
<b>Postgraduate</b>																		
2010/11	1,580	875	30	20	0	2,505	840	1,170	10	30	70	2,115	2,420	2,045	35	45	70	4,620
2011/12	1,525	910	35	20	0	2,490	955	1,245	10	15	80	2,305	2,485	2,155	45	35	80	4,800
2012/13	1,545	1,155	20	20	0	2,735	950	1,135	20	25	55	2,180	2,490	2,285	40	45	55	4,915
2013/14	1,405	1,190	20	20	0	2,630	955	1,190	35	15	75	2,270	2,360	2,380	55	35	75	4,900
2014/15	1,420	1,070	20	20	0	2,525	995	1,125	35	20	45	2,225	2,415	2,195	55	40	45	4,750
<b>Total</b>																		
2010/11	5,125	4,460	265	220	0	10,070	1,935	2,860	65	30	705	5,595	7,065	7,320	325	250	705	15,665
2011/12	5,120	5,385	275	250	0	11,030	1,825	3,140	90	15	760	5,830	6,945	8,525	365	265	760	16,860
2012/13	5,365	5,475	275	270	0	11,385	1,765	3,105	95	25	680	5,670	7,130	8,575	375	295	680	17,055
2013/14	5,285	5,605	300	225	0	11,410	1,485	2,340	70	20	590	4,500	6,770	7,940	370	240	590	15,910
2014/15	5,335	5,805	280	240	0	11,660	1,475	2,245	115	20	495	4,350	6,805	8,050	400	260	495	16,010

Source : HESA

**Notes:**

(1) The Queen's University of Belfast (2) Ulster University (3) Stranmillis University College (4) St Mary's University College (5) Open University

To prevent the identification of individuals, figures in the attached table are rounded to the nearest 5, with 0, 1, 2 rounded to 0. Due to rounding, the sum of numbers in each row or column may not match the total shown.

**Table 10a: Students gaining qualifications at NI HEIs by mode of study and Institution  
2013/14 and 2014/15**

Mode of Study	Institution			Percentage change from 2013/14 to 2014/15
		2013/14	2014/15	
Full-time	QUB <sup>(1)</sup>	5,285	5,335	0.9%
	UU <sup>(2)</sup>	5,605	5,805	3.6%
	Stranmillis <sup>(3)</sup>	300	280	-6.0%
	St Mary's <sup>(4)</sup>	225	240	7.2%
	OU <sup>(5)</sup>	0	0	-
	Total	11,410	11,660	2.2%
Part-time	QUB	1,485	1,475	-0.7%
	UU	2,340	2,245	-4.0%
	Stranmillis	70	115	62.5%
	St Mary's	20	20	10.5%
	OU	590	495	-15.8%
	Total	4,500	4,350	-3.3%
Total	QUB	6,770	6,805	0.6%
	UU	7,940	8,050	1.3%
	Stranmillis	370	400	7.3%
	St Mary's	240	260	7.4%
	OU	590	495	-15.8%
	Total	15,910	16,010	0.6%

Source : HESA

**Table 10b: Students gaining qualifications at NI HEIs by level of qualification and Institution  
2013/14 and 2014/15**

Level of Qualification	Institution			Percentage change from 2013/14 to 2014/15
		2013/14	2014/15	
First degree	QUB	3,830	3,855	0.6%
	UU	4,370	4,655	6.5%
	Stranmillis	265	255	-3.0%
	St Mary's	205	220	6.8%
	OU	240	300	24.4%
	Total	8,915	9,285	4.2%
Other undergraduate	QUB	580	535	-7.3%
	UU	1,195	1,200	0.3%
	Stranmillis	55	90	66.7%
	St Mary's	0	0	-
	OU	270	145	-45.8%
	Total	2,100	1,975	-6.0%
Postgraduate	QUB	2,360	2,415	2.4%
	UU	2,380	2,195	-7.7%
	Stranmillis	55	55	-1.9%
	St Mary's	35	40	11.4%
	OU	75	45	-37.3%
	Total	4,900	4,750	-3.1%
Total	QUB	6,770	6,805	0.6%
	UU	7,940	8,050	1.3%
	Stranmillis	370	400	7.3%
	St Mary's	240	260	7.4%
	OU	590	495	-15.8%
	Total	15,910	16,010	0.6%

Source : HESA

**Notes**

- (1) The Queen's University of Belfast
- (2) Ulster University
- (3) Stranmillis University College
- (4) St Mary's University College
- (5) Open University

To prevent the identification of individuals, figures in the attached table are rounded to the nearest 5, with 0, 1, 2 rounded to 0. Due to rounding, the sum of numbers in each row or column may not match the total shown.

UK COMPARISON

Table 11: Students gaining qualifications at UK HEIs including OU by level of study, mode of study and country of Institution - 2010/11 to 2014/15.

Level and Year	Full-time					Part-time					Total				
	NI	England	Scotland	Wales	Total	NI	England	Scotland	Wales	Total	NI	England	Scotland	Wales	Total
<b>First Degree</b>															
2010/11	7,375	274,225	29,385	19,735	330,720	945	32,815	3,175	1,360	38,295	8,320	307,040	32,560	21,095	369,015
2011/12	8,195	290,455	30,915	21,240	350,805	910	34,770	3,170	1,340	40,185	9,100	325,220	34,085	22,580	390,990
2012/13	8,155	302,370	32,415	21,445	364,385	950	33,975	3,055	1,405	39,385	9,105	336,345	35,470	22,850	403,770
2013/14	7,995	319,875	33,320	22,265	383,460	920	32,775	3,065	1,455	38,215	8,915	352,655	36,385	23,720	421,675
2014/15	8,360	296,485	33,110	20,405	358,355	925	31,800	3,100	1,395	37,225	9,285	328,285	36,210	21,800	395,580
<b>Other Undergraduate</b>															
2010/11	190	56,150	4,700	2,900	63,940	2,535	67,400	3,570	3,935	77,440	2,725	123,550	8,270	6,835	141,375
2011/12	345	55,190	5,355	3,035	63,930	2,620	58,775	3,435	3,370	68,200	2,965	113,965	8,790	6,410	132,125
2012/13	490	52,070	5,615	3,105	61,275	2,540	51,600	3,380	3,315	60,840	3,030	103,670	8,995	6,420	122,115
2013/14	785	44,710	5,460	2,920	53,875	1,315	36,965	3,040	2,825	44,145	2,100	81,675	8,500	5,745	98,015
2014/15	770	39,810	5,290	3,400	49,270	1,200	32,130	2,615	2,610	38,555	1,975	71,940	7,905	6,010	87,825
<b>All Undergraduate</b>															
2010/11	7,565	330,375	34,085	22,635	394,660	3,480	100,210	6,745	5,295	115,730	11,045	430,585	40,830	27,930	510,390
2011/12	8,540	345,645	36,270	24,280	414,730	3,525	93,545	6,600	4,710	108,385	12,065	439,190	42,870	28,990	523,115
2012/13	8,650	354,440	38,025	24,545	425,660	3,490	85,575	6,435	4,725	100,225	12,135	440,015	44,465	29,270	525,885
2013/14	8,780	364,585	38,780	25,190	437,330	2,230	69,745	6,105	4,280	82,360	11,010	434,330	44,885	29,465	519,690
2014/15	9,135	336,290	38,400	23,805	407,625	2,125	63,930	5,715	4,005	75,780	11,260	400,220	44,115	27,810	483,405
<b>Postgraduate</b>															
2010/11	2,505	144,235	17,560	8,670	172,970	2,115	64,830	5,900	6,335	79,185	4,620	209,065	23,460	15,005	252,155
2011/12	2,490	151,620	19,300	10,405	183,820	2,305	66,650	5,755	5,560	80,270	4,800	218,270	25,055	15,965	264,090
2012/13	2,735	150,560	19,915	9,595	182,800	2,180	66,990	5,630	4,410	79,210	4,915	217,550	25,545	14,005	262,015
2013/14	2,630	149,675	20,845	9,615	182,770	2,270	63,270	5,885	3,715	75,140	4,900	212,945	26,730	13,330	257,905
2014/15	2,525	152,005	21,440	9,790	185,765	2,225	64,190	5,620	3,800	75,835	4,750	216,195	27,065	13,590	261,600
<b>Total</b>															
2010/11	10,070	474,610	51,645	31,305	567,630	5,595	165,040	12,645	11,630	194,910	15,665	639,650	64,290	42,935	762,545
2011/12	11,030	497,265	55,570	34,685	598,550	5,830	160,195	12,355	10,270	188,655	16,860	657,460	67,930	44,955	787,205
2012/13	11,385	505,000	57,940	34,140	608,465	5,670	152,565	12,065	9,135	179,435	17,055	657,565	70,005	43,275	787,900
2013/14	11,410	514,260	59,625	34,805	620,100	4,500	133,010	11,990	7,995	157,500	15,910	647,275	71,615	42,795	777,600
2014/15	11,660	488,300	59,840	33,595	593,390	4,350	128,120	11,335	7,805	151,615	16,010	616,420	71,175	41,400	745,005

Source : HESA

Notes:

To prevent the identification of individuals, figures in the attached table are rounded to the nearest 5, with 0, 1, 2 rounded to 0. Due to rounding, the sum of numbers in each row or column may not match the total shown.

**Table 11a: Students gaining qualifications at UK HEIs by mode of study and location of institution - 2013/14 and 2014/15**

Mode of Study	Location of Institution			Percentage change from 2013/14 to 2014/15
		2013/14	2014/15	
Full-time	NI	11,410	11,660	2.2%
	England	514,260	488,300	-5.0%
	Scotland	59,625	59,840	0.4%
	Wales	34,805	33,595	-3.5%
	Total UK	620,100	593,390	-4.3%
Part-time	NI	4,500	4,350	-3.3%
	England	133,010	128,120	-3.7%
	Scotland	11,990	11,335	-5.5%
	Wales	7,995	7,805	-2.4%
	Total UK	157,500	151,615	-3.7%
Total	NI	15,910	16,010	0.6%
	England	647,275	616,420	-4.8%
	Scotland	71,615	71,175	-0.6%
	Wales	42,795	41,400	-3.3%
	Total UK	777,600	745,005	-4.2%

Source : HESA

**Table 11b: Students gaining qualifications at UK HEIs by level of qualification and location of institution - 2013/14 and 2014/15**

Level of Qualification	Location of Institution			Percentage change from 2013/14 to 2014/15
		2013/14	2014/15	
First degree	NI	8,915	9,285	4.2%
	England	352,655	328,285	-6.9%
	Scotland	36,385	36,210	-0.5%
	Wales	23,720	21,800	-8.1%
	Total UK	421,675	395,580	-6.2%
Other undergraduate	NI	2,100	1,975	-6.0%
	England	81,675	71,940	-11.9%
	Scotland	8,500	7,905	-7.0%
	Wales	5,745	6,010	4.6%
	Total UK	98,015	87,825	-10.4%
Postgraduate	NI	4,900	4,750	-3.1%
	England	212,945	216,195	1.5%
	Scotland	26,730	27,065	1.2%
	Wales	13,330	13,590	2.0%
	Total UK	257,905	261,600	1.4%
Total	NI	15,910	16,010	0.6%
	England	647,275	616,420	-4.8%
	Scotland	71,615	71,175	-0.6%
	Wales	42,795	41,400	-3.3%
	Total UK	777,600	745,005	-4.2%

Source : HESA

To prevent the identification of individuals, figures in the attached table are rounded to the nearest 5, with 0, 1, 2 rounded to 0. Due to rounding, the sum of numbers in each row or column may not match the total shown.

## **ANNEX B: Tables based on HESA's change in methodology**

Table 12 below shows how Table 10 in the main bulletin would look under DEL's old methodology. Qualifications gained at the Open University in Northern Ireland would not be included in the table below and the overall totals for NI HEIs would decrease. More information on this change in methodology can be seen in point 3 of the notes and definitions.

**Table 12: Students gaining qualifications at NI HEIs (excluding NI Open University) by level of qualification, mode of study and institution - 2010/11 to 2014/15**

Level of qualification	Academic year	Qualification obtained mode of study														
		Full-time					Part-time					Total				
		Institution identifier					Institution identifier					Institution identifier				
		QUB <sup>(1)</sup>	UU <sup>(2)</sup>	Stranmillis <sup>(3)</sup>	St Mary's <sup>(4)</sup>	Total	QUB <sup>(1)</sup>	UU <sup>(2)</sup>	Stranmillis <sup>(3)</sup>	St Mary's <sup>(4)</sup>	Total	QUB <sup>(1)</sup>	UU <sup>(2)</sup>	Stranmillis <sup>(3)</sup>	St Mary's <sup>(4)</sup>	Total
First degree	2010/11	3,500	3,460	215	200	7,375	240	470	30	0	740	3,740	3,930	245	200	8,115
	2011/12	3,440	4,300	220	230	8,195	215	445	55	0	710	3,655	4,745	275	230	8,905
	2012/13	3,615	4,065	230	245	8,155	210	475	50	0	735	3,830	4,540	280	250	8,895
	2013/14	3,635	3,900	255	205	7,995	195	465	10	5	675	3,830	4,370	265	205	8,670
	2014/15	3,720	4,205	215	220	8,360	135	450	40	0	625	3,855	4,655	255	220	8,985
Other undergraduate	2010/11	45	125	20	0	190	855	1,220	25	0	2,105	905	1,345	45	0	2,295
	2011/12	155	175	20	0	345	655	1,450	25	0	2,130	810	1,620	45	0	2,475
	2012/13	205	255	30	0	490	605	1,495	25	0	2,125	810	1,750	55	0	2,615
	2013/14	245	515	25	0	785	330	685	30	0	1,045	580	1,195	55	0	1,830
	2014/15	195	530	45	0	770	340	670	45	0	1,055	535	1,200	90	0	1,825
All undergraduate	2010/11	3,545	3,585	235	200	7,565	1,095	1,690	55	0	2,845	4,640	5,275	290	200	10,410
	2011/12	3,595	4,475	240	230	8,540	870	1,895	80	0	2,845	4,465	6,365	320	230	11,380
	2012/13	3,825	4,320	260	245	8,650	815	1,970	75	0	2,860	4,640	6,290	335	250	11,510
	2013/14	3,880	4,415	280	205	8,780	530	1,150	40	5	1,720	4,410	5,565	320	205	10,500
	2014/15	3,915	4,735	265	220	9,135	475	1,120	85	0	1,680	4,390	5,855	345	220	10,810
Postgraduate	2010/11	1,580	875	30	20	2,505	840	1,170	10	30	2,045	2,420	2,045	35	45	4,550
	2011/12	1,525	910	35	20	2,490	955	1,245	10	15	2,230	2,485	2,155	45	35	4,720
	2012/13	1,545	1,155	20	20	2,735	950	1,135	20	25	2,130	2,490	2,285	40	45	4,865
	2013/14	1,405	1,190	20	20	2,630	955	1,190	35	15	2,195	2,360	2,380	55	35	4,825
	2014/15	1,420	1,070	20	20	2,525	995	1,125	35	20	2,175	2,415	2,195	55	40	4,700
Total	2010/11	5,125	4,460	265	220	10,070	1,935	2,860	65	30	4,890	7,065	7,320	325	250	14,960
	2011/12	5,120	5,385	275	250	11,030	1,825	3,140	90	15	5,070	6,945	8,525	365	265	16,100
	2012/13	5,365	5,475	275	270	11,385	1,765	3,105	95	25	4,990	7,130	8,575	375	295	16,375
	2013/14	5,285	5,605	300	225	11,410	1,485	2,340	70	20	3,915	6,770	7,940	370	240	15,325
	2014/15	5,335	5,805	280	240	11,660	1,475	2,245	115	20	3,855	6,805	8,050	400	260	15,515

Source: Higher Education Statistics Agency (HESA)

**Notes:**

(1) Queen's University Belfast (2) Ulster University (3) Stranmillis University College (4) St Mary's University College (5) Open University

To prevent the identification of individuals figures are rounded to the nearest 5, with 0, 1 and 2 rounded to 0. Due to rounding the sum of numbers in each row or column may not match the total shown.

**Table 12a: Students gaining qualifications at NI HEIs by mode of study and institution - 2014/15**

Old methodology and current methodology

Mode of study	Institution identifier	Old methodology	Current methodology
Full-time	QUB <sup>(1)</sup>	5,335	5,335
	UU <sup>(2)</sup>	5,805	5,805
	Stranmillis <sup>(3)</sup>	280	280
	St Mary's <sup>(4)</sup>	240	240
	OU <sup>(5)</sup>		0
	Total	11,660	11,660
Part-time	QUB <sup>(1)</sup>	1,475	1,475
	UU <sup>(2)</sup>	2,245	2,245
	Stranmillis <sup>(3)</sup>	115	115
	St Mary's <sup>(4)</sup>	20	20
	OU <sup>(5)</sup>		495
	Total	3,855	4,350
Total	QUB <sup>(1)</sup>	6,805	6,805
	UU <sup>(2)</sup>	8,050	8,050
	Stranmillis <sup>(3)</sup>	400	400
	St Mary's <sup>(4)</sup>	260	260
	OU <sup>(5)</sup>		495
	Total	15,515	16,010

Source: Higher Education Statistics Agency (HESA)

**Table 12b: Students gaining qualifications at NI HEIs by level of qualification and institution - 2014/15**

Old methodology and current methodology

Level of qualification	Institution identifier	Old methodology	Current methodology
First degree	QUB <sup>(1)</sup>	3,855	3,855
	UU <sup>(2)</sup>	4,655	4,655
	Stranmillis <sup>(3)</sup>	255	255
	St Mary's <sup>(4)</sup>	220	220
	OU <sup>(5)</sup>		300
	Total	8,985	9,285
Other undergraduate	QUB <sup>(1)</sup>	535	535
	UU <sup>(2)</sup>	1,200	1,200
	Stranmillis <sup>(3)</sup>	90	90
	St Mary's <sup>(4)</sup>	0	0
	OU <sup>(5)</sup>		145
	Total	1,825	1,975
All undergraduate	QUB <sup>(1)</sup>	4,390	4,390
	UU <sup>(2)</sup>	5,855	5,855
	Stranmillis <sup>(3)</sup>	345	345
	St Mary's <sup>(4)</sup>	220	220
	OU <sup>(5)</sup>		450
	Total	10,810	11,260
Postgraduate	QUB <sup>(1)</sup>	2,415	2,415
	UU <sup>(2)</sup>	2,195	2,195
	Stranmillis <sup>(3)</sup>	55	55
	St Mary's <sup>(4)</sup>	40	40
	OU <sup>(5)</sup>		45
	Total	4,700	4,750
Total	QUB <sup>(1)</sup>	6,805	6,805
	UU <sup>(2)</sup>	8,050	8,050
	Stranmillis <sup>(3)</sup>	400	400
	St Mary's <sup>(4)</sup>	260	260
	OU <sup>(5)</sup>		495
	Total	15,515	16,010

Source: Higher Education Statistics Agency (HESA)

**Notes:**

(1) Queen's University Belfast (2) Ulster University (3) Stranmillis University College (4) St Mary's University College (5) Open University  
To prevent the identification of individuals figures are rounded to the nearest 5, with 0, 1 and 2 rounded to 0. Due to rounding the sum of numbers in each row or column may not match the total shown.