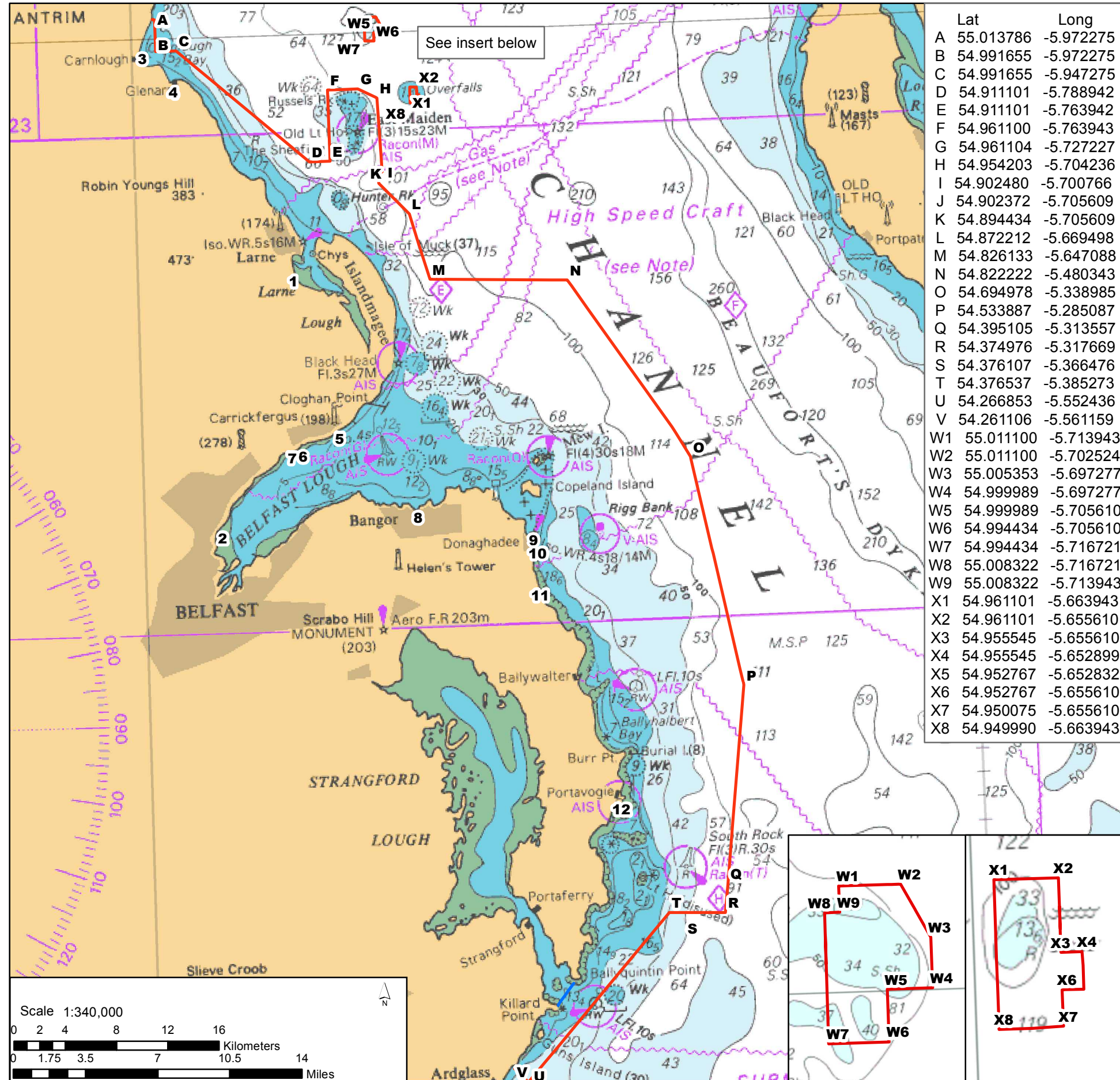


PROPOSED EAST COAST (NORTHERN IRELAND) MARINE



Lat	Long
A	55.013786 -5.972275
B	54.991655 -5.972275
C	54.991655 -5.947275
D	54.911101 -5.788942
E	54.911101 -5.763942
F	54.961100 -5.763943
G	54.961104 -5.727227
H	54.954203 -5.704236
I	54.902480 -5.700766
J	54.902372 -5.705609
K	54.894434 -5.705609
L	54.872212 -5.669498
M	54.826133 -5.647088
N	54.822222 -5.480343
O	54.694978 -5.338985
P	54.533887 -5.285087
Q	54.395105 -5.313557
R	54.374976 -5.317669
S	54.376107 -5.366476
T	54.376537 -5.385273
U	54.266853 -5.552436
V	54.261106 -5.561159
W1	55.011100 -5.713943
W2	55.011100 -5.702524
W3	55.005353 -5.697277
W4	54.999989 -5.697277
W5	54.999989 -5.705610
W6	54.994434 -5.705610
W7	54.994434 -5.716721
W8	55.008322 -5.716721
W9	55.008322 -5.713943
X1	54.961101 -5.663943
X2	54.961101 -5.655610
X3	54.955545 -5.655610
X4	54.955545 -5.652899
X5	54.952767 -5.652832
X6	54.952767 -5.655610
X7	54.950075 -5.655610
X8	54.949990 -5.663943

PROPOSED EAST COAST (NORTHERN IRELAND) MARINE SPECIAL PROTECTION AREA

EC Site Code: UK9020320

SITE BOUNDARY: The Special Protection Area (SPA) includes all the marine area landward of the red line to the mean low water mark. In addition to the excluded areas noted below, the site also excludes the Strangford Lough SPA (blue line boundary)

AREA OF SPA: 96668.34 Ha

SITE LATITUDE: 54 03 00N
SITE LONGITUDE: 06 07 00W

COUNCIL AREA: marine waters adjoining:
BELFAST CITY COUNCIL, ANTRIM AND NEWTOWNABBEE BOROUGH COUNCIL, MID AND EAST ANTRIM BOROUGH COUNCIL, ARDS AND NORTH DOWN BOROUGH COUNCIL and NEWRY, MOURNE AND DOWN DISTRICT COUNCIL

COUNTY: adjoining
COUNTY ANTRIM AND COUNTY DOWN

Special Protection Area
Directive 2009/147/EC codified version of Directive 79/409/EEC as amended

Classified by the Minister for the Department of the Environment

Date: _____



Included areas: The following areas are included within the SPA

- 1: North Glynn Lagoon (Larne Lough area)
- 2: Whitehouse Lagoon (Belfast Lough area)

Excluded areas: The following constructed features are not included within the SPA

Existing piers, jetties and elevated structures extending beyond the mean low water mark

- 3: Carnlough Harbour
- 4: Glenarm Harbour
- 5: Kilroot 'harbour'
- 6: Carrickfergus Harbour
- 7: Carrickfergus Marina
- 8: Bangor Harbour and Marina including the Long Hole
- 9: Donaghadee Harbour
- 10: Copelands (Donaghadee) Marina
- 11: Millisle lagoon and pool
- 12: Portavogie Harbour

