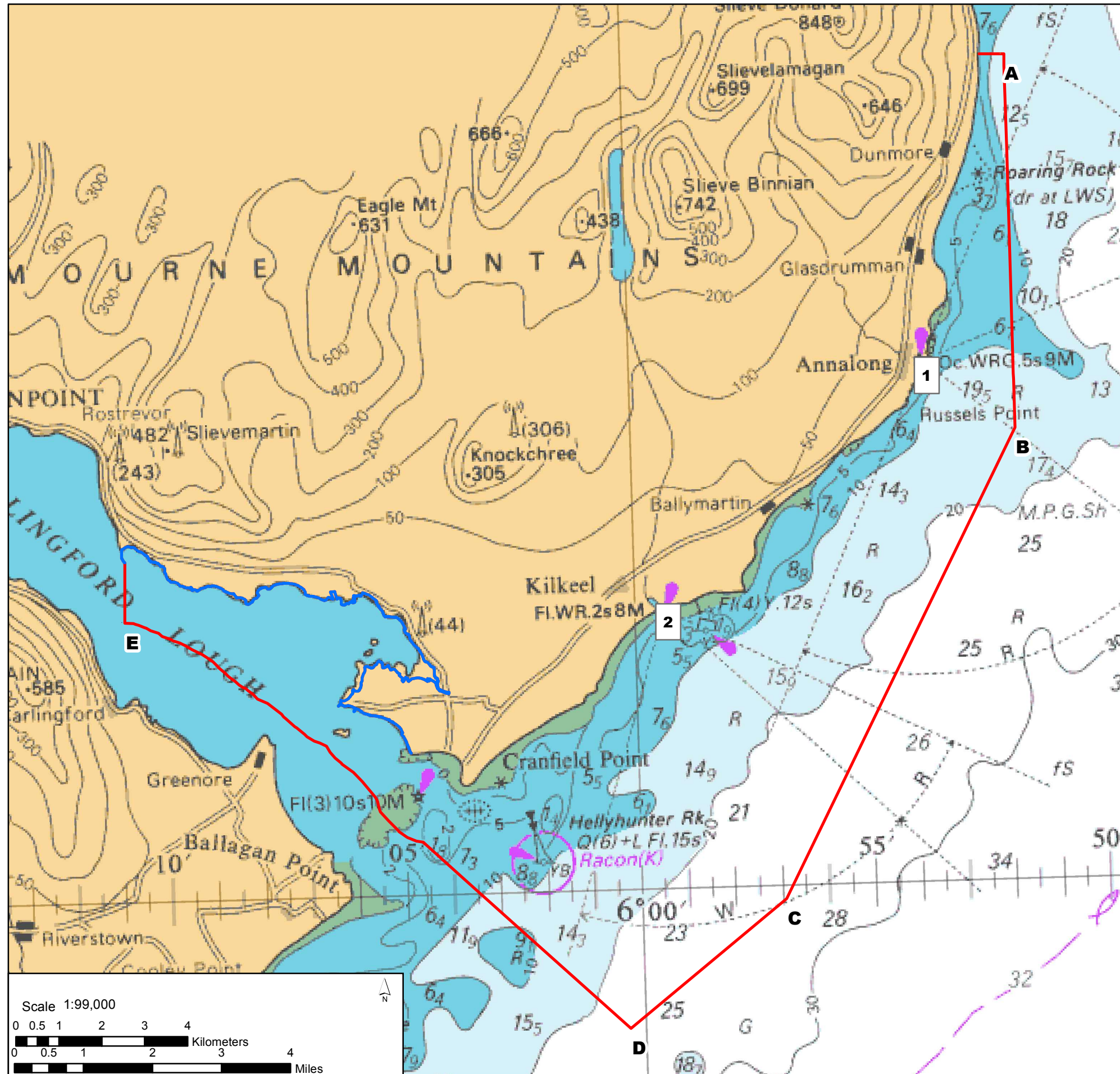


# CARLINGFORD LOUGH PROPOSED MARINE EXTENSION



## CARLINGFORD LOUGH PROPOSED MARINE EXTENSION SPECIAL PROTECTION AREA

EC Site Code: UK9020161

**SITE BOUNDARY:** The Special Protection Area (SPA) includes all the lands seaward of the blue line to the mean low water mark and the marine area landward of the red line to the mean low water mark.

AREA OF SPA: 11143.10 Ha

SITE LATITUDE: 54 03 00N

SITE LONGITUDE: 06 07 00W

COUNCIL AREA: NEWRY, MOURNE AND DOWN DISTRICT COUNCIL

COUNTY: DOWN

**Special Protection Area**  
Directive 2009/147/EC codified version of Directive 79/409/EEC as amended

**Classified by the Minister for the Department of the Environment**

Date: \_\_\_\_\_



Latitude and Longitude marine boundary points:

- A: 54.172698, -5.863914
- B: 54.094439, -5.863932
- C: 53.997218, -5.950042
- D: 53.970974, -6.006679
- E: 54.058626, -6.182723

The line D - E indicates part of the 'Carlingford Lough mid-line' for the purposes of mapping the SPA extent.

**Excluded areas:**

The following constructed features are not included within the Special Protection Area

Existing piers, jetties and elevated structures extending beyond the mean low water mark

- 1: Annalong Harbour
- 2: Kilkeel Harbour