

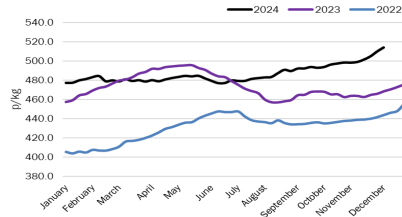
DEADWEIGHT CATTLE TRADE

NI FACTORY BASE QUOTES FOR CATTLE

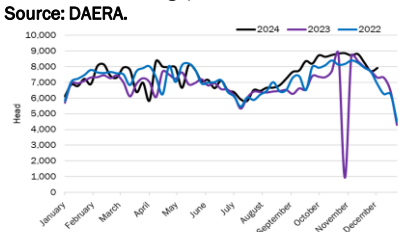
(P/KG DW)	This Week 09/12/24	Next Week 16/12/24
Steers & Heifers		
U-3	494 - 500p	494 - 502p
R-3	488 - 494p	488 - 496p
O+3	482 - 488p	482 - 490p
P+3	426 - 432p	426 - 434p
Cows		
O+3	385 - 396p	385 - 400p

Base quotes for in-spec U-3 steers and heifers, and O+3 cows were received from 6 of the 7 major NI beef slaughter plants. Base quotes vary depending on age, weight and grade. Pricing policies vary from plant to plant. Producers are advised to check pricing policies before presenting cattle for slaughter.

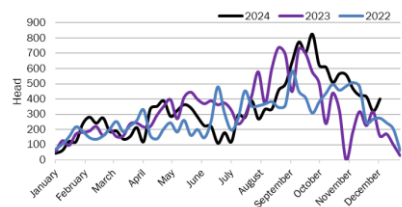
R3 Steer Price NI 2022 – 2024 YTD.



NI Prime cattle throughput 2022 – 2024 YTD.



Prime ROI cattle imports for direct slaughter 2022 – 2024 YTD. Source: DAERA.



NI REPORTED AVERAGE CATTLE PRICES - P/KG

W/E 07/12/24	Steers	Heifers	Young Bulls
U3	515.1	515.8	504.2
R3	510.0	509.8	499.0
O+3	501.9	501.0	486.6

*Prices Exclude Aberdeen Angus, Hereford, WAGU and Organic Cattle.

NI REPORTED AVERAGE COW PRICES - P/KG

W/E 07/12/24	<220kg	220-250kg	250-280kg	>280kg
P1	260.2	279.5	296.0	312.3
P2	282.9	312.8	333.9	350.5
P3	316.3	329.3	351.6	362.9
O3	319.0	332.0	360.5	379.2
O4	-	-	343.7	378.8
R3	-	-	-	401.9

Deadweight Cattle Trade

The deadweight trade for cattle in local plants has been unaffected by the ending of Christmas production with a steady demand continuing. The prime cattle trade strengthened for the fifth consecutive week, with a record trade reported. Price increases across all reported prime cattle base grades ranged from 1p/kg to 6.2p/kg. Steers performed strongly with the category average increasing 6.1p/kg to 507.2p/kg. The average price paid for an R3, R4 and O3 steer was 514.1p/kg, 515.1p/kg and 507.4p/kg respectively. Heifers also reported an overall increase of 2.4p/kg to 504.3p/kg on average with an R3 heifer paid 512.1p/kg on average last week. The cow trade reached a high for 2024 to date last week, with an O3 cow paid 377.6p/kg on average. Preliminary base quotes received for early next week indicate a further strengthening is expected for all types of cattle.

Last week prime cattle throughput totalled 7,908 head, with 2,690 cows slaughtered. This was an increase of 200 prime cattle and a decline of 144 cows compared to the previous week. Direct slaughter imports from ROI increased last week by 80 prime cattle and 46 cows, in response to a smaller kill locally during the previous week. Imports to local plants last week comprised of 312 steers, 88 heifers and 256 cows, accounting for six per cent of total prime cattle and cow slaughterings. Meanwhile, five prime cattle and 53 cows were exported for direct slaughter in ROI. The highest weekly cow export to ROI since August 2023.

In ROI last week, the trade for steers and heifers continued to strengthen in both euro and sterling terms with the O3 cow price reaching a high for 2024. Strong increases were also reported across GB continuing to exceed previous record highs. In Europe, the deadweight cattle trade has continued to increase across all categories in recent weeks.

LAST WEEK'S AVERAGE DEADWEIGHT CATTLE PRICES

W/E 07/12/24	Northern Ireland	Rep of Ireland	Scotland	Northern England	Midlands & Wales	Southern England	GB
Steers							
U3	515.5	460.6	561.4	554.0	547.6	553.0	555.8
R3	514.1	456.4	558.9	555.6	544.4	546.8	550.9
R4	515.1	457.2	558.1	557.0	541.9	547.6	554.6
O3	507.4	451.3	543.2	539.2	527.5	533.1	534.0
AVG	507.2	-	556.2	547.1	532.9	537.0	543.5
Heifers							
U3	516.2	468.3	562.9	553.8	555.8	559.4	557.6
R3	512.1	460.3	556.6	548.8	544.0	545.8	547.2
R4	512.3	463.2	558.8	553.1	543.2	547.4	552.7
O3	503.6	457.5	523.0	528.5	518.4	528.1	524.3
AVG	504.3	-	554.3	541.7	526.8	531.6	537.8
Young Bulls							
U3	503.7	457.8	548.9	523.6	540.6	545.0	539.2
R3	495.7	454.4	544.9	530.2	531.3	528.2	533.8
O3	482.4	444.8	527.7	504.5	509.6	517.7	512.8
AVG	488.0	-	542.1	516.6	518.3	527.1	522.9
Prime Cattle							
O3	377.6	394.4	404.6	401.1	393.4	395.8	397.9
O4	377.7	396.5	406.5	403.2	395.9	395.7	399.9
P2	339.1	364.0	353.0	356.3	350.2	356.8	353.5
P3	360.0	378.1	386.2	378.5	367.4	370.8	370.6
AVG	335.5	-	396.8	378.0	355.6	356.0	365.5

Prices listed are for deadweight price reported animals only. Prices are p/kg. Sterling to ROI prices are converted at 1 euro = 82.9p Stg. Shading indicates a lower price than the previous week. AVG is the average price of all grades in the category (not just those listed).

NI LATEST LIVELWEIGHT CATTLE MART PRICES

W/E 07/12/24	1st QUALITY			2nd QUALITY		
	FROM	TO	AVG	FROM	TO	AVG
Finished Cattle (p/kg)						
Steers	290	319	302	245	289	265
Friesians	-	-	-	-	-	-
Heifers	290	329	295	245	289	255
Beef Cows	250	344	273	150	249	190
Dairy Cows	146	170	156	66	145	110
Store Cattle (p/kg)						
Steers up to 400kg	350	406	375	250	349	290
Steers 400kg - 500kg	315	363	340	230	314	265
Steers over 500kg	290	338	305	220	289	250
Heifers up to 450kg	300	432	340	200	299	255
Heifers over 450kg	280	467	295	225	279	240
Dropped Calves (£/head)						
Continental Bulls	400	630	460	300	395	330
Continental Heifers	325	500	385	210	320	265
Friesian Bulls	135	276	185	35	130	65
Holstein Bulls	120	195	155	8	115	75

DEADWEIGHT SHEEP TRADE

NI DEADWEIGHT SHEEP BASE QUOTES

(P/Kg)	This Week 09/12/24	Next Week 16/12/24
R3 Lambs up to 23kg	660 - 670p	660 - 680p

NI REPORTED AVERAGE SHEEP PRICES

(P/KG)	W/E 23/11/24	W/E 30/11/24	W/E 07/12/24
D/W R3 Lambs	635.2	651.4	661.4
D/W Lambs	636.2	652.3	662.4
L/W Lambs	620.8	629.8	635.3

AVERAGE SHEEP PRICES (GB / ROI)

GB D/W Lambs	661.2	685.9	690.7
ROI D/W Lambs	645.4	655.9	674.6

Sheep Trade

Last week the lamb trade continued to strengthen in NI, GB and ROI. In NI a deadweight lamb was paid 662.4p/kg on average, up 10.1p/kg from the previous week, while the live trade in local marts was up 5.5p/kg to 635.3p/kg. In GB a 4.8p/kg increase was reported for deadweight lambs. Last week 8,852 lambs were slaughtered in local plants, a decline of 1,513 head from the week prior. Meanwhile, lamb exports to ROI last week increased to total 4,682 head. The major NI lamb processors expect the trade to remain firm for the remainder of 2024 with increased base quotes received for early next week. Producers should note only one plant is quoting below 670p/kg, and producers are encouraged to price around the plants when selling stock.

Early this week a slacker demand from ROI agents was reported in local marts however the trade was maintained, and demand recovered as the week progressed with fewer fat lambs available across the country. In Ballymena on Wednesday 2,119 lambs were met with an average price of 630p/kg, compared to 2,403 head last week securing 615p/kg on average. The ewe trade has also strengthened in recent weeks, with industry reporting increased demand for quality ewes from the export market, a timely opportunity for NI producers.

LATEST SHEEP MARTS (P/KG LW)

From: 07/12/24		Lambs			
To: 12/12/24		No	From	To	Avg
Saturday	Omagh	558	605	659	-
	Swatragh	420	596	652	-
Monday	Kilrea	1400	635	684	-
	Markethill	1110	630	673	-
Tuesday	Saintfield	655	625	715	-
	Rathfriland	400	640	788	-
Wednesday	Ballymena	2119	600	684	630
	Enniskillen	385	568	727	-
	Armoyle	432	605	670	-