

## DEADWEIGHT CATTLE TRADE

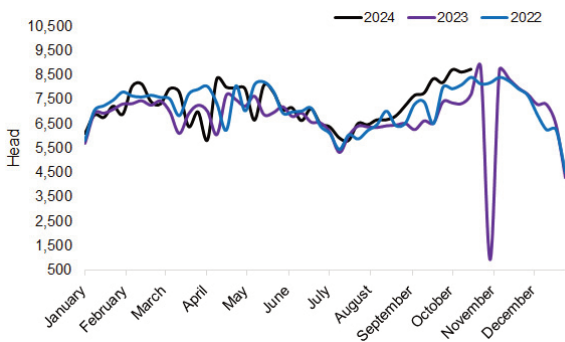
### NI FACTORY BASE QUOTES FOR CATTLE

(P/KG DW)	This Week 21/10/24	Next Week 28/10/24
<b>Prime</b>		
U-3	480 - 482p	480 - 482p
R-3	474 - 476p	474 - 476p
O+3	468 - 470p	468 - 470p
P+3	412 - 414p	412 - 414p
<b>Cows</b>		
O+3	365 - 380p	365 - 380p

Cow quotes vary depending on weight and grade. Pricing policies vary from plant to plant. Producers are advised to check pricing policies before presenting cattle for slaughter.

### Prime Cattle Throughput to date 2022 - 2024

Source: DAERA.



## FQAS REMINDERS

### Start of closed period for spreading farmyard manure

Between **midnight on 31st October** and **midnight on 31st January** the spreading of farmyard manure to any land is **not** permitted.



### REPORTED NI CATTLE PRICES - P/KG

W/E 19/10/24	Steers	Heifers	Young Bulls
U3	499.9	500.1	487.6
R3	493.7	495.2	482.2
O+3	485.8	486.8	468.2

\*Prices exclude AA, HER, WAG and Organic cattle

### REPORTED COW PRICES NI - P/KG

W/E 19/10/24	Weight Bands			
	<220kg	220-250kg	250-280kg	>280kg
P1	245.8	264.4	282.5	301.8
P2	285.7	290.6	318.2	334.6
P3	-	297.5	338.0	347.5
O3	244.0	351.5	371.2	366.1
O4	-	314.0	344.7	364.2
R3	-	-	410.0	392.9

### Deadweight Cattle Trade

Supplies of prime cattle for slaughter in NI continued at strong levels last week with 8,727 head slaughtered in local plants. This is the highest weekly throughput of prime cattle in NI during the year and similar to the weekly level of 8,726 recorded in November 2023. Cow throughput in NI last week also peaked at the highest weekly level during 2024 to date with 2,821 head slaughtered. Of local slaughterings, direct slaughter imports from ROI accounted for 508 prime cattle and 274 cows, or six and ten per cent of the respective category total.

Last week the average carcass weight of prime cattle processed in NI saw a 1kg decline to 341.3kg, driven by declines in heifer and young bull carcass weights by 1.1kg and 0.3kg respectively. Meanwhile steers reported a 0.5kg increase from the previous week. This resulted in a 27.2 tonne increase in beef produced from prime cattle week on week. Moreover, a 3kg increase in cow carcass weights last week combined with an increased throughput of 163 head saw cow beef volumes handled by local plants last week increase by 56.3 tonnes.

Last week in NI the deadweight trade for steers and heifers continued to strengthen. The average price reported for a U3 steer was 500.4p/kg matching the previous peak recorded during May 2023. The average price reported for a U3 heifer remained steady on the previous week at 499.3p/kg. Meanwhile, last week the price paid for commercial cattle locally continued to increase with production underway for Christmas 2024. The price paid for a commercial U3 steer was 500.1p/kg with 500.1p/kg paid on average for a U3 heifer. Base quotes indicate a similar deadweight trade for cattle early next week.

### LAST WEEK'S DEADWEIGHT CATTLE PRICES (UK / ROI)

W/E 19/10/24	Northern Ireland	Rep of Ireland	Scotland	Northern England	Midlands & Wales	Southern England	GB
Steers	U3	500.4	434.2	530.4	522.8	520.3	524.3
	R3	497.5	425.7	531.9	521.5	516.5	519.2
	R4	496.5	427.4	529.3	524.9	512.8	519.9
	O3	489.8	414.6	515.4	509.4	499.5	501.7
AVG	489.9	-	526.9	516.3	503.8	509.5	513.8
Heifers	U3	499.3	439.0	535.3	524.6	524.1	524.6
	R3	496.8	430.2	529.2	520.2	516.1	519.3
	R4	497.3	431.7	529.0	522.4	515.4	518.1
	O3	487.5	424.2	509.8	505.1	495.3	502.7
AVG	491.4	-	526.4	511.1	501.9	503.4	510.8
Young Bulls	U3	486.8	429.5	512.4	514.6	517.6	525.9
	R3	480.9	421.8	515.8	497.9	507.6	514.9
	O3	469.1	409.7	492.9	482.2	473.8	503.8
	AVG	472.3	-	507.8	491.8	491.6	512.4
Prime Cattle Price Reported	7,191	-	6,370	7,294	8,210	5,116	26,990
Cows	O3	366.1	370.6	398.3	389.6	380.8	384.7
	O4	362.7	371.1	401.8	390.5	383.8	385
	P2	324.7	336.4	356.1	344.5	343	345.4
	P3	344.7	356.6	363.3	363.5	358.2	364.8
AVG	321.7	-	395.5	364	345.1	342.3	353.6

Notes: (i) Prices are p/kg Sterling-ROI prices converted at 1 euro=83.45p Stg  
(ii) Shading indicates a lower price than the previous week.  
(iii) AVG is the average of all grades in the category, not just those listed

## LIVEWEIGHT CATTLE TRADE

### LATEST LIVEWEIGHT CATTLE MART PRICES NI

	W/E 19/10/24	1st QUALITY			2nd QUALITY		
		From	To	Avg	From	To	Avg
<b>Finished Cattle (p/kg)</b>							
Steers		280	310	293	230	279	248
Friesians		226	234	230	-	-	-
Heifers		270	315	290	210	269	230
Beef Cows		246	307	269	160	245	190
Dairy Cows		130	173	150	62	129	105
<b>Store Cattle (p/kg)</b>							
Steers up to 400kg		300	360	325	200	299	245
Steers 400kg - 500kg		275	336	305	170	274	220
Steers over 500kg		290	330	305	200	289	240
Heifers up to 450kg		280	349	305	210	279	230
Heifers over 450kg		270	344	295	200	269	235
<b>Dropped Calves (£/head)</b>							
Continental Bulls		400	600	450	250	395	310
Continental Heifers		325	500	400	200	320	250
Friesian Bulls		170	270	235	85	105	90
Holstein Bulls		115	260	165	25	85	52

## DEADWEIGHT SHEEP TRADE

### NI SHEEP BASE QUOTES

(P/Kg DW)	This Week 21/10/24	Next Week 28/10/24
R3 Lambs up to 22kg	600 - 610p	610p

### REPORTED NI SHEEP PRICES

(P/KG)	W/E 05/10/24	W/E 12/10/24	W/E 19/10/24
D/W R3 Lambs	583.7	586.3	591.9
D/W Lambs	585.0	587.0	595.3
L/W Lambs	547.8	557.8	577.1

### REGIONAL SHEEP PRICES (GB / ROI)

GB D/W Lambs	624.0	617.5	618.5
ROI D/W Lambs	600.8	605.9	610.1

### Sheep Trade

Last week in NI, lamb throughput totalled 9,945 head, this was a decline of 927 head week on week and 1,171 head behind lamb slaughterings in local plants during the corresponding week of 2023. Meanwhile, lamb exports to ROI plants for direct slaughter totalled 6,304 head, an increase of 1,598 head from the previous week.

Last week the deadweight lamb price in NI recovered to an average of 595.3p/kg, up 8.3p/kg on the previous week. Base quotes for R3 grading lambs ended this week in the region of 610p/kg with a similar trade expected early next week.

As reported in last week's bulletin, demand from the export market continues to drive the local lamb trade. Last week the liveweight trade for lambs was reported at 577.1p/kg an increase of 19.3p/kg week on week. This is the highest price paid for liveweight lambs in NI during the month of October since 2009 (the earliest data available to LMC at the time of publishing). During the corresponding week of 2023 the equivalent price in NI was 482.9p/kg. In ROI last week the deadweight lamb trade continued to strengthen reported at the equivalent of 610.1p/kg, up by 4.8p/kg week on week.

## LIVEWEIGHT SHEEP TRADE

### LATEST SHEEP MARTS (P/KG LW)

From: 21/10/24		Lambs			
To: 24/10/24		No	From	To	Avg
Saturday	Omagh	953	597	678	-
	Swatragh	1000	595	656	-
Monday	Kilrea	1200	560	642	-
	Markethill	1290	550	618	-
Tuesday	Saintfield	810	580	710	-
	Rathfriland	600	560	721	-
Wednesday	Ballymena	2540	540	612	565
	Armoy	450	540	610	-