

# Colin

## Neighbourhood Renewal Area

Annual Report  
2018/19



Northern Ireland  
Statistics and Research Agency



**DfC**

Department  
for Communities

[www.communities-ni.gov.uk](http://www.communities-ni.gov.uk)

**Colin Neighbourhood Renewal Area**  
**Annual Report 2018/19**



Colin Neighbourhood Partnership Website: <http://www.newcolin.com>

The comments and views included in the narrative of this report are those of the Colin Neighbourhood Partnership and may not reflect or represent the views of the Department for Communities.



## **£2.1 MILLION TRANSFORMATION OF COLIN COMPLETE**

### **The Belfast Hub will be a catalyst for the regeneration of this area**

The official opening of the Colin Connect Transport Hub and Colin Town Square took place in March 2019, this project was part of the Urban Villages and Dept. for Infrastructure initiative. The hub includes two community spaces which it is envisaged will be managed by Colin Neighbourhood Partnership (CNP) who will also use the civic square to host a variety of public events and community activities.

Speaking at the event Dr. Mark Browne, Director of Strategic Policy, Equality and Good Relations at the Executive Office said: “I am thrilled to be here to officially open the Colin Connect Transport Hub and Colin Town Square”.

“This new facility presents a fantastic opportunity for the people in the Colin area and it will be a tremendous asset for the entire community. It will not only help to connect the people who live in the Colin area, it will also serve as a gateway to the rest of Belfast and beyond. “The Urban Villages Initiative, through The Executive Office, is continuing to invest in the Colin Urban Village area through a number of other projects including the new park in Colin, also on the Stewartstown Road. This high quality destination park, which has just received planning permission, will see a further £5million investment in the area and will attract visitors to the area from far and wide.”

Annie Armstrong, Manager, Colin Neighbourhood Partnership, added: “We are delighted to see our ambitious plans come to fruition. This is such a positive boost for the Colin area. “In addition to the new transport system which has already massively improved accessibility and connectivity with other parts of Belfast, the civic square will provide us with a great venue to host a range of events for people living or visiting the Colin area.” “It is important to note however, that this is only a small part of the overall centre masterplan for Colin. We look forward to receiving the same commitment from other government departments to deliver on the remainder of our masterplan for the Colin area.”

Annie also commended and highlighted other major projects that are either underway or just completed, i.e., the new community centre at Lagmore, Ionad na Fuisioige new centre in Twinbrook, the new Belfast City Council leisure facility and the commencement of the new Holy Evangelists Primary School.

### **West Belfast Transport Hub named Northern Ireland’s Building of the Year 2019**

The Royal Society of Ulster Architects (RSUA) has awarded the Liam McCormick Prize for Northern Ireland’s Building of the Year to the Colin Connect Transport Hub and Colin Town Square in West Belfast.

The project was designed by Hall McKnight for the Department for Infrastructure, the Urban Villages Initiative, Colin Neighbourhood Partnership and Translink. As well as the RSUA award, the project also won the RIBA Northern Ireland Award 2019 and RIBA National Award 2019.



Exterior of the Transport Hub



Interior of the Transport Hub

#### Architect's statement

This building and its associated square are the first pieces to emerge from a masterplan that anticipates significant regeneration in an area of West Belfast. While associated with a new city-wide rapid transit project (of which the building is a terminus), the building will act as a focus around which the masterplan will proceed. The local community will have use of the space for events.

Two granite squares define the site plan – a new public square and the building. We adopted this geometry in response to the lack of immediate context as the site was essentially part of an area of problematic 'no man's land' located between two neighbourhoods that reflect Belfast's historic divisions. A new road marks the southern boundary of the site and provides a turning head for the buses. Given this nebulous physical context, the two squares provided a discipline around which to plan and articulate the programme. The building is carved with curved excisions to the north and west elevations.

The interior of the building is made with in-situ concrete dyed with a red/terracotta coloured pigment evoking the tones of Victorian brickwork that defines Belfast's historic core (a few miles away). Two windows protrude from the red interior and present to the main public elevations: a tall window to the new public square; and a raised horizontal window to the main road and parkland on the opposite side.

***Richard Dougherty, associate, Hall McKnight***

As well as receiving all of these accolades for the Architect, the Colin Connect Hub featured in the N.I. Builders May edition Magazine.

A key element of the wider Belfast Rapid Transit project, Colin Connect Transport Hub is a seriously impressive building. The technical excellence achieved by FORRME on the project isn't something you come across every day and while the complexities associated with the build were certainly a challenge, they weren't enough to faze the team at FORRME.

The new £2.1million Transport Hub in Colin comprises a reinforced concrete structure, internally clad in red board marked concrete and externally clad in Portuguese granite. FORRME was tasked with the entire build package, from piling and granite works to curtain walling, surfacing, roofing and the internal fit-out. Conor Anderson, Contracts Manager at FORRME said "This was a complex yet ultimately rewarding project to work on. The shape of the building presented a significant challenge as it curves and rises in various directions. Using flat granite panels to achieve a curved finish was difficult, as was achieving the exact finish internally. Normally when you're pouring concrete, it's never seen but we were working on the finished walls at the very beginning of the job. Getting the exact effect the client was looking for was difficult but we achieved it."

Despite the numerous challenges, Colin Connect Transport Hub was completed on time, within budget and to the highest standards of workmanship.

Conor and the team at FORRME are proud of the finished product. "It was a lovely job to work on and it's great to be associated with such a prestigious project. The sub-contractors must be commended for the superb job they did. The finish they achieved is unbelievable and you really have to see it to fully appreciate it.

## About Neighbourhood Renewal -

The Neighbourhood Renewal Programme aims to reduce social and economic inequalities which characterise the most deprived areas. It does so by making a long term commitment to communities to work in partnership with them to identify and prioritise needs and co-ordinate interventions designed to address the underlying causes of poverty. Neighbourhood Renewal Partnerships were established to be representative of local community interests together with appropriate Government Departments, public sector agencies, private sector interest and local elected representatives.

Colin Neighbourhood is located on the outskirts of greater West Belfast and because of the Review of Public Administration transferred to Belfast City Council local government boundaries at 1<sup>st</sup> April 2015. The remit of the Colin Neighbourhood Partnership (CNP) is *to take forward the Neighbourhood Renewal Programme* by delivering a comprehensive renewal strategy for the Colin Area that comprises Poleglass, Twinbrook and portions of Lagmore and Kilwee a population of approximately 18,600 and a wider surrounding population that increases the population to approximately 30,000.

CNP was established in 2004 and has active participation from community representatives, public sector organisations, political representatives and voluntary organisations and private sector that have interest in the area's development. The organisation promotes a holistic approach to addressing economic and social inequality closing the gap between neighbourhood renewal areas and those that are not included in neighbourhood renewal. CNP meets on a monthly basis and holds an AGM yearly, producing audited accounts annually. The administration services are provided through a Partnership Manager, Finance and Office Manager, and a Development Network consisting of; Good Morning Colin Manager, Early Intervention Manager, 10 Development Officers with specific remits i.e. Arts & Culture, Community Safety, Men, Youth, Volunteering and Early Intervention Services, and a Marketing Officer.

The Partnership comprises 23 members which include representatives from local communities, voluntary organisations, elected representatives, private sector and local statutory organisations. The Partnership has established six sub groups engaging approx. 200 individuals in task specific remits as well as other funding programmes and several major environmental schemes. The six subgroups assist in the identification, development and where appropriate; the delivery of projects which aim to address Neighbourhood Renewal's four strategic objectives of: Community Renewal, Social Renewal, Economic Renewal and Physical Renewal. Each sub group has developed its own action plan working in partnership with all the relevant organisations: SEHSCT, EA, CCMS, PSNI, BCC, NIHE, Ex. Office, DfC, CYPSPB, PHA, Urban Villages as well as all the local community and voluntary organisations.

Under review of the Colin Neighbourhood Action Plan in 2016 four priorities were identified and agreed, they are:

**Early Intervention**

**Health**

**Community Development / Safety**

**Physical Improvement/Environment**

It should be noted that Colin Neighbourhood Partnership and Subgroups have all signed up to and abide by the Neighbourhood Renewal Code of Practice and Guiding Principles and subsequent Subgroup Terms of Reference.




DfC support has been and remains key to the success of the Colin Neighbourhood Partnership. DfC funding has demonstrated confidence in our organisation's ability to deliver against objectives and in our governance. This has helped in securing funds from other sources to support a range of social, economic and environmental programmes in the Colin Area. Other funders of CNP include:

Funding Body	Purpose of Funding
Belfast City Council	Community events/programmes and Capacity Building
Education Authority	Youth Inclusion programme costs
Atlantic Philanthropies	Colin Early Intervention Programmes
Public Health Agency	Colin Early Intervention Programme
	Healthy Eating/Physical Activity Programmes (Allotments)
Health & Social Care Board	Colin Early Intervention Programme
Department of Justice	Colin Early Intervention Programme
S.E.H.S.C.T.	Colin Early Intervention Programmes, general health and Good Morning Colin running costs.
CLEAR Project	Colin area Men's Shed programme activities.
Social Investment Fund	Colin Early Intervention Programmes.
Social Investment Fund	Capital works to Cloona House
Urban Villages	Capital and Revenue programmes.

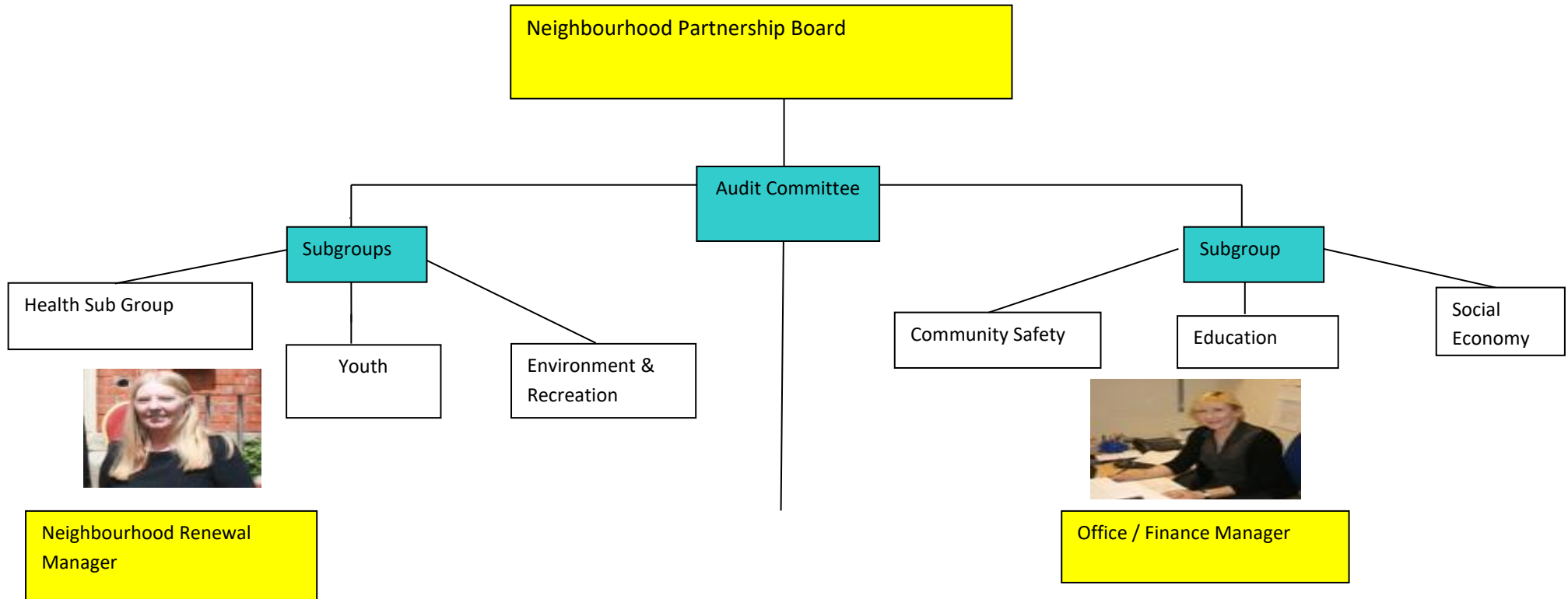


## Colin Neighbourhood Partnership Board 2018/19

					
<p><b>Bernard Moane</b>  <b>CNP</b>  <b>Chairperson</b>            Bernard represents the Kilwee Community. He works for an Executive Agency within the DoE</p>	<p><b>Theresa Brady</b>  <b>CNP Secretary</b>            Theresa Brady Treasurer of CNP            Theresa is Manager of Ionad Na Fuisseoige.</p>	<p><b>Jim Bradley</b>  <b>CNP Treasurer</b>            Jim represents the Environmental Subgroup            Jim is the Manager of the Belfast Hills</p>	<p><b>Lynda Vladeanu</b>  <b>Colin Health subgroup Rep.</b>            Lynda is currently Acting Assistant Director for promoting Health and Wellbeing within the SEH &amp; SCT.</p>	<p><b>Geoff Beattie</b>  <b>DfC</b>  <b>Representative.</b>            Geoff is Deputy Director for the DfC Community Empowerment Division and is a non-voting member</p>	<p><b>Orlaithi Flynn</b>  <b>MLA</b>            Representing Paul Maskey M.P. on CNP board.            Orlaithi replaced Jennifer McCann as MLA for West Belfast.</p>
					
<p><b>Jason White</b>            Assistant Director Health Development South Eastern Health and Social Care Trust(SHE&amp;SCT)</p>	<p><b>Nigel Monroe</b>            Neighbourhood Renewal Officer, Department for Communities</p>	<p><b>Fr. Pat Sheehan</b>            Parishes representative on the CNP board</p>	<p><b>Arlene Kee</b>            Education Authority representative</p>	<p><b>Sean O’Kane</b>            N.I.H.E.            Representative</p>	<p><b>Stephen Magennis</b>            S.F. Representative.</p>

					
<p><b>Jackie Bunting</b> Twinbrook Community Representative Jackie joined the board in November 15</p>	<p><b>Patricia Ramsey</b> Twinbrook Community Representative Patricia joined the board in November 2014</p>	<p><b>Máire Scott &amp; Mary Smith</b> Lagmore Community Representatives on the CNP Board</p>	<p><b>Isobel Loughran</b> Women's Sector representative</p>	<p><b>Jim Gibney</b> Kilwee Community Representative on the CNP Board</p>	

## Colin Neighbourhood Partnership Organisational Chart



### The Projects

Implementation/Community Development Team	Administrator	Youth Inclusion.	Good Morning Colin	Volunteer/Capacity Building	Marketing/ Communications Officer
Early Intervention Community Locality Planning Group Expert Advisory Group Crescendo Steering Group	Colin Community Allotment	Colin Men's Shed	Colin Care Social Economy	Enviro Care Colin Care	Colin Town Centre Stakeholders

## **Colin Neighbourhood Partnership Projects**

**For the period 01/04/18 through 31/03/19 the Neighbourhood Renewal Investment Fund are currently supporting the following 4 projects in Colin Neighbourhood Partnership.**

**Colin Neighbourhood Partnership - Core Salaries and Overheads**

**Colin Neighbourhood Partnership - Health Priority**

**Colin Neighbourhood Partnership - Early Intervention Priority**

**Colin Neighbourhood Partnership - Community Development / Community Safety**

Neighbourhood Renewal funding for these projects was secured until 31/03/19.

Any projects for the period 01/04/18 through 31/03/19 will appear in the annual report for that period.

### Community Renewal

Colin Neighbourhood Partnership Core Salaries and Overheads – this project is an ‘enabler’ it allows CNP to operate and deliver across all priorities. The aim of this project is: to provide the leadership and administration necessary to deliver the Neighbourhood Renewal strategy in the Colin area that further establishes the role of the Partnership as the umbrella for community development and underpins community led infrastructure that attracts support from all stakeholders. This project allows all other programmes and services for the Colin NRA to be developed and delivered.

Colin Neighbourhood Partnership Community Development, this project is focused on the implementation of the Colin Neighbourhood Renewal Action Plan.

*Colin will be an area with a vibrant centre, where people are happy to live, work, play and study and proud to say they are from. It will be a community empowered to participate and make a difference, where local achievements are celebrated and visitors are welcomed.”*

The project supports the following posts; Community Safety Officer, Arts & Culture Officer, Volunteering Development Officer, a portion of the Marketing Officer’s salary and a Caretaker’s post with Footprints Women’s Centre.

## Community Renewal

### Colin Neighbourhood Partnership

Colin Neighbourhood Partnership continue to provide an annual calendar of events for all in the community, provide training in capacity building, provide opportunities for volunteering, improve community relations, provide support for local community and voluntary groups, provide projects and activities that promote shared spaces. All of this enables us to sustain the real sense of community spirit and pride in this area.

Here at Colin Neighbourhood Partnership community renewal is action that helps people to develop their own ability and help build resilience to address problems and their needs. We try to achieve this in many ways by offering programmes, activities and training for parents of young children, parents of adolescents, children, young people, men, women, and older residents to help improve the quality of life for all our residents.

This is an opportunity to establish strong communities and gives a voice to communities to decide the best use of assets, it strengthens the capacity of people to become active citizens and provides opportunities for community, statutory and other sectors to work in collaboration to develop social, economic, environmental and other themes to ensure better positive outcomes.

All of the activities and events highlighted below are extremely beneficial and very much appreciated by the local community. Improvements to this area can be achieved by its residents voluntarily working together. There are many examples of such contributions via all the volunteering activity that goes on day and daily in this community. This is showcased below by showing the many local people who are interested in the welfare and well-being of their local community. We believe it is extremely important that they are recognised at the annual volunteer celebration event that takes place every June during volunteering week.

Planning and conducting festivals and other community events involves many members of the community, which yields a number of social benefits.

Many residents tell us that being involved with festivals, events and assisting in delivering programmes is the opportunity to get involved in helping to build and foster a sense of pride within their own area, feel part of something that is very positive and feel better about where they live.

Community festivals and events attract visitors at city and on occasion's regional level. Events help to capture attention and promote a positive view of the local people. They also make it possible to maximise the use of spaces seen previously as a burden and places to avoid. Our events have positive impacts that go well beyond what can be measured in economic terms, they contribute to the quality of life by

strengthening this community providing unique activities and events and build awareness of diverse cultures and identities and act as a source of community pride and spirit.

There exists in this community a willingness and desire to make this area a better place to live, rear children and welcome visitors, this is evidenced by the decrease in numbers of residents leaving the area, the increase in numbers of families engaging with schools and the year on year increase in numbers of residents participating in community events and activities that promotes this community in a very positive light

## **CNP Highlights 2018/19**

### **Colin Volunteers celebrated:**

#### Colin Volunteer Awards & Celebration

There were 96 nominations for 38 individuals across 6 categories –

Youth Volunteer

Adult Volunteer

Small Group

Large Group

Best Newcomer

Exemplary Contribution to the Colin community.

25 voluntary groups were acknowledged and recognised,

180 people attended the event which took place on 14<sup>th</sup> June.



Liam & Harry Cunningham Saints Boxing Club



Aoife Dinn (Right) Young Volunteer Award



Leaders from various organisations



Colin Youth Personal Growth Group



Good Morning Colin Volunteers



Colin Early Intervention Champions





Belfast Hills Park Run Volunteers



Some others who attended the celebrations



Mary McNeill, former Chair Footprints Women's Centre receiving the exemplary contribution to volunteering in the Colin area.



## Youth Inclusion Project

The project is for young people with and without disabilities to take part in youth work projects that promotes inclusion for all. Over 50 young people registered with the project not all these young people attend each night. From March the young people have been involved in a number of projects and activities. The young people have taken part in artwork shops, drama projects sport and health projects. The Colin Youth Inclusion Project ran 2 summer schemes this year one for junior members aged 7 to 12 and other for senior members aged 13 to 17, both a great success with 26 young people participating each day. The success of the summer project depends very much on the involvement of the Inclusion Project's volunteer staff team.



The above images show the participation of Colin Youth Inclusion Projects member's involvement in Belfast's Culture Night X held in September 2018 in Belfast City.

Belfast Culture Night staff worked with young people (13-17yrs) involved in the Inclusion Project to develop a programme of activities that they could showcase during Culture Night. The idea was that the young people would be given a budget £250, to organise an event during Culture Night. The group decided to hold sporting events that the public could also participate in. After a number of group work sessions they decided that they wanted to show case sports that were fun and easy to take part in and a little different from the usual sports. They developed the following programme:

## **Human Fozzball**

The young people and staff made a life size human football table where 8 members of the public could take part in each game. They had 2 members of the inclusion project to manage the fozzball event at all times to ensure that it was safe and fun for anyone who took part.

## **Superhero sumo suits and bounce boxing**

They decided to hire Superhero Sumosuits.

The young people took charge of booking the hire of the suits, they contacted the supplier informed them who to invoice and discussed with the supplier details of safety issues they may need to address. After talking with the hire people and having a group vote on who would be best to manage the running of this event it was decided that 4 members of the Inclusion Project and 2 adult staff members would run this event to ensure the safety of both the public and the young people running the event.

## **Netball**

They decided on Netball because some of the members played it a lot in school and felt that they could test whether or not they still had the skills and as they knew the rules they were confident that they could run a successful event. 3 members of the Inclusion group ran the netball event.

## **Penalty Kicks**

Having decided on the Penalty Kicks event, they needed to address a number of things i.e., what equipment and resources they needed, who would be the goalie and who would explain the rules to the public 2 members of the Inclusion Project organised the event with both taking turns in goals and explaining the rules.

The above public events were held in Belfast City Centre from 3pm to 7pm on Friday the 21<sup>st</sup> of September 2018 and were open to the public to come along and take part in any of the events. The group kept within their budget and had money left over so they decided they wanted to use the money to get T-shirts made with the Culture Night Logo on the front and the Colin Youth Inclusion Logo on the back of the T-shirt.

Over the 4 hours around 300 member of the public took part in all the activities.

Overall the event worked really well and we got a lot of positive feedback from members of the public. We feel this was a great opportunity for the young people as they had to do all the work, the staff team provided support for the young people. These events were extremely beneficial for the group because it provided them with opportunities to develop new skills, interact with strangers and build their self-confidence and of course show off what they could achieve.

## First Aid Training with British Red Cross

The Inclusion senior members and young volunteers took part in training with the British Red Cross. We feel this was very important that both young people and young volunteers completed this training which has helped to build their knowledge, confidence and self-esteem. 13 senior members and 5 young volunteer staff took part in the training resulting in 18 new young people trained in first aid which is beneficial to the group and the wider community.



## Good Morning Colin

Good Morning Colin (GMC) was set up in 2001, following an extensive community safety consultation which highlighted that almost half of all elderly residents, living in their own homes, were fearful of crime and anti-social behaviour.

Good Morning Colin is a free of charge cross community telephone befriending and alert service operating 365 days a year, seven days a week in not only the Colin area, but also attracting users in greater Dunmurry e.g. Seymour Hill, through to Lisburn and outlying areas.

Good Morning Colin employs one full time Co-ordinator funded by the Department for Communities who manages the day to day operation of the service as well as a team of 24+ telephone volunteers, all of whom live locally and in many cases they and their families use other services delivered by the Colin Neighbourhood Partnership (CNP). All volunteers are Access NI checked and are required to sign a confidentiality agreement on commencing their voluntary engagement with the service.

In the past 12 months in excess of 60,000 calls have been made to 400 + clients.

Staff and volunteers have participated in a wide range of in house and external training on subjects such as:

- Crime Prevention
- H.A.P (Home Accident Prevention)
- First Aid
- Drug and Alcohol Awareness
- Vulnerable Adult
- Deaf Awareness
- Heart/Stroke Awareness
- Alzheimer's/Dementia Awareness
- Mental Health First Aid
- Applied Suicide Intervention Support Training
- Advanced Competent Helper training

Training on suicide awareness and prevention is especially pertinent as there are high levels of suicide in the area, especially among young people. Volunteers are frequently required to provide a listening ear for service user parents and grandparents unable to understand and/or cope with their feelings following a family tragedy of this kind.

Volunteers are able to identify any potential problems, to alert carers, statutory organisations or neighbours if there are any potential problems and to facilitate access to a range of other provision. Good Morning Colin also offer additional features including safety advice and equipment, crime prevention support, social activities, maintenance and gardening support when possible and a range of other services.

Because it is an integrated project within the Colin Neighbourhood Partnership GMC can readily link registered users into the Partnership's extensive menu of locally based services such as:

- Colin Health for All – delivering initiatives and programmes addressing, mental health, nutrition and physical activities, substance addiction/misuse, domestic violence/elder abuse and suicide awareness and prevention as well as the Colin Area Men's Shed.
- Colin Community Safety – including road safety, home security and gardening support.
- Colin Care - a social economy enterprise established to delivering domiciliary care to those who need personal care in their homes, primarily to the elderly and physically disabled who might need some assistance or support in meeting their daily needs.
- New Colin Community Counselling - designed to enable users to explore issues impacting on their lives and discover ways of living more effectively.
- Colin B Well Resource Centre - a one-stop contact point for signposting and information on services in the Colin area to enable people to quickly access current and relevant information on a wide range of services and activities available locally.
- Service Users are also enabled to participate in many social activities and events throughout the year, i.e., Valentines, May Balls, St. Patricks Day events, summer festival trips etc., healthy eating cooking sessions, Halloween and Christmas events; all organised by the GMC Coordinator and CNP's Arts & Culture Project Officer.

All of the above are overseen, and their activities and interventions planned and shaped by representatives of key local statutory and voluntary and community agencies with specific interest or statutory responsibility e.g. GMC is represented on various such sub groups to ensure that the needs of the older people and vulnerable adults are always on the agenda.

In the last year Good Morning Colin have made in excess of 60,000 phone calls to a clientele of 400 older and vulnerable adults.

Good Morning Colin is funded through DfC Neighbourhood Renewal and the South Eastern Health & Social Care Trust, with smaller contributions from others funders.

The GMC services also provides a very important experience for volunteers as it supports them in addressing depression, social isolation, capacity building and citizenship in relation to them feeling valued and useful.

(See images below of just some of the events that take place throughout the year).





St. Patrick's Céili



Easter Bonnet Competition



Halloween Fancy Dress Party

## Training



**Grow your own garden**



**Capacity Building Training**



**Grandparents Photography Course**



Community Training  
Calendar 2018-2019.

See attached annual training calendar for period 2018/19

Colin Neighbourhood Partnership are very grateful to all the following organisations who enabled the delivery of this training. Belfast City Council, Public Health Agency, South Eastern Health & Social Care Trust, Job Assist, Libraries NI, NI Housing Executive Supporting Communities. We are also appreciate all those organisations who provided the venues etc.

This training becomes more and more popular each year especially the training that can support people with emotional well-being issues. A total of 375 people completed the training.

## Summer Festival 2018

The Colin Summer Festival, organised by Colin Neighbourhood Partnership and supported by the Urban Villages Initiative and Department for Communities, featured nearly 2 weeks of family events that will take place in the Colin area of West Belfast during the month of August.

The annual community festival kicked off on Wednesday 1<sup>st</sup> August with a Historical Trip to Dublin. Over the following 11 days there was a Family Camp and Crafts Night, BBQ cookery classes at the Colin Allotments, a Family Treasure Hunt in Colin Glen Forest, and a Men's Health Fair in Cloona House.

Highlights of the festival included the annual Colin Festival Parade and Family Fun day on Thursday 9<sup>th</sup> August. This colourful carnival parade made its way up from St Luke's Church in Twinbrook at 12:45pm, along the Stewartstown Road, to Laurel Glen car park where there was a free Family Fun Day. There were carnival rides, face painters, live music, arts and crafts, talent competitions, bouncy castles and much more. This free family event was guaranteed to keep the kids entertained for hours.

Another highlight was a Food and Craft Market at the Colin Allotments on the Colin Glen Road on Tuesday 7<sup>th</sup> August. Here there was lots of different vendors who specialise in fresh produce including breads, meats, confectionary, and artisan food products and drinks. There was also arts and crafts produced by local artists, the event also featured live music and cookery demonstrations in the allotment kitchen.

The Colin Summer Festival is one of the biggest community events in the Colin calendar and we were delighted to be part of the West Belfast-wide celebration of 30 years of Féile. We were determined to put on a range of events to cater to all ages and have plenty of activities to keep families busy and entertained. The festival highlight is the Colin Festival Parade and Family Fun Day. It really is amazing to see everyone in our community come together and enjoy a great family day out.



The involvement of ArtsEkta participants and displays is one of the favourites for both children and adults at the parade, the costumes, rhythms, sights and materials that show off the multi-cultural elements in N.I. add real colour and vibrancy to the overall parade.

ArtsEkta participants adding lot of colour and diversity





Sophia & Kia Rose



Caitlin, Megan & Lorna



Toni & Lexi



Kaela



Kids, their parents/grandparents members of various groups enjoying the fun filled atmosphere at the family fun day and of course the marvellous weather.





Some of Colin's Got Talent Hopefuls



Audience enjoying the talent show





Younger residents enjoying the fun fair rides

Roger Winter from Sure Start taking good care of the wee nippers at the family fun day.



It's just great to see parents and children together enjoying a great free, fun, positive and very colourful event in the lovely sunshine.  
  
At these events provide lots of opportunity to try new activities, meet new people and discover more about people from ethnic minorities etc.

## Halloween & Parents Week 2018

As always Colin Neighbourhood Partnership held their annual Halloween spook-tacular, hosting fun-filled Halloween themed week of family activities to mark Parent week which began on 26<sup>th</sup> October. This is a major family event that takes place every year during the school mid-term break, a full week of events for parents and kids which provides many opportunities and events for parents and kids to spend lots of fun filled quality time together.

The Partnership teamed up with local voluntary and statutory organisations in the area to deliver a week of seasonal events, especially for kids and their parents or carers. The events included family fun days, spooky storytelling, Halloween fancy dress tea party, and even a Ghouls and Gruffalo welly walk. An Autumn Activity Fair took place in the Dairy Farm Centre, families took part in a whole host of free activities including pumpkin carving, face painting, petting farm, art and clay crafts and bun decorating. Families were also able to capture their own special memories in a free photo booth.

The highlight of the week was the Colin Halloween Parade and Family Fright Night, one of the biggest community events in West Belfast on Halloween night. The parade started at the Laurel Glen car park and made its way up the Stewartstown Road to Cloona House which was transformed into a Halloween Hell Hotel. With carnival rides, fire breathers, spooky storytelling, arts and craft workshops, food stalls, terrifying walkabout characters and dinosaurs and more, an unforgettable night of family fun was experienced by all, some were jumping out of their skin with fright.

We are delighted to have partnered with Colin Sure Start, Libraries NI and Footprints Women's Centre to deliver such a varied range of events for local families.

### Some images of Halloween Event at Cloona House

Grounds of Cloona House transformed into a spooky world for the Family Fright Night event. The grounds were decorated for an unforgettable walkabout trail featuring fire breathers, storytellers, scary walk about characters and dinosaurs, with carnival rides and arts and crafts workshops for the kids, an unforgettable night of family fun was enjoyed by all.









Parents Week Images



## Christmas 2018

# Christmas Celebrations in New Colin Town Square

Families gathered at the new Colin Town Square for the annual Christmas festivities and Christmas lights switch-on.

Hosted by Colin Neighbourhood Partnership and funded by the Urban Villages Initiative and Department for Communities this is the first event to be held in the Town Square. The new square forms part of a major investment in the Colin area which is being supported through the Urban Villages Initiative.

The full programme of entertainment included Santa arriving by Glider to illuminate the Christmas lights of the 40 ft. Norwegian Christmas tree. Santa was joined by Linsey Farrell, Urban Villages Initiative Programme Director for the official lights switch on. Special guests also included David Sterling, Head of Civil Service and Dr Mark Browne, The Executive Office, Director of Strategic Policy, Equality and Good Relations.

Santa greeted children in his Grotto in the new rapid transport hub which forms a vital part of the Belfast Rapid Transit project and has created a new and dynamic public transport system for the Colin area.

Crowds were kept entertained by carol singing from local school children and the Colin and EastSide community choirs. Festivities also included live music, adventure funhouse, games and seasonal arts and crafts.

Speaking at the event David Sterling, Head of Civil Service commented: "It's at events such as this, when the community comes together, that you see the positive impact shared spaces can have. Colin Town Square will not only connect the people who live in this area, but also serve as a gateway to the wider city of Belfast.

The joined up nature of this project highlights the collaboration which is central to delivery of the Programme for Government. It shows Government working better together with the community, stakeholders and across government, delivering the things that have a real impact on people's quality of life."

Mark Browne, the Executive Office added, "It's been great to be here with you today to celebrate Christmas at this very first event on the new Colin Town Square. We could clearly see tonight how this development is already impacting positively on people's lives and beginning the visible transformation of the Colin area."

John Paul Russell, Arts and Cultural Development Officer, Colin Neighbourhood Partnership commented: "This has been our biggest Christmas event to date. The new Town Square is an exciting new development for the Colin area and we look forward to using the space for future public events and community activities.

Christmas is a big festival of joy and happiness and a time for family, friends and the local community to come together, and there's no better way to get in the merry spirit than hosting a public event where everyone has the opportunity to experience the very positive environment of feeling good, happiness and a real sense of community spirit. This is why the Colin Christmas event is one of the most important celebrations that Colin Neighbourhood Partnership provides each year.

As you can see from the images below the festive spirit was well and truly in the air.



Linsey Farrell helping Santa switch on the Lights



Captain Colin meeting and greeting



Some of the Crescendo Choir

Christmas is also a time to give, CNP secured donations from Cash for Kids, Giving Circle and Food Banks to support a number of families involving over 100 Children who needed additional support over the Christmas period, families were identified and referred by the following organisations ColinSure Start, Clover Hill Hostel, Schools, Colin Early Parenting Project, Schools and Social Services. Families received toys, gifts, food hampers and meat vouchers.



Images of the Santa Comes to Colin Event





Some of our amazing entertainers



Our Guest Speakers



David Sterling

Mark Browne





Staff and volunteer team that worked extremely hard on the night.

## Connecting the Colin Community with Creativity

March for the Colin community is an Annual Celebration of everything that is creative and to mark this year's celebrations, Colin Neighbourhood Partnership unveiled a bumper programme of events which included a host of creative and interactive activities for people of all ages.

In association with the Department for Communities and the Urban Villages Initiative, we held our 6<sup>th</sup> Creativity Month throughout the month of March, we organised a wide variety of craft workshops for adults including Aromatherapy, Flower Essence, Fairy and Woodland Trails, Beach Crafts Art and even a Slime Time Workshop.

A hugely popular event in the Creativity Month in Colin programme was our free Creativity Day in the Dairy Farm Shopping Centre on Friday 15<sup>th</sup> March from 3pm-6pm. This included Cultural Dance, arts and crafts from different cultural backgrounds, food tasting and entertainment from the Armagh Rhymers.

And for the very first time at the new Colin Town Square we hosted a roller skating rink from Thursday 21<sup>st</sup> March – Saturday 23<sup>rd</sup> March, which was a great and fun way to bring all the family together. The opening of the rink coincided with the official opening of the new Colin Transport Hub and Town Square where there was performances from local schools and activities for all the family.

Creativity Month also featured a Belfast history tour, Irish language course, kid's bedtime story time, a seniors Ceili, and a Community boxing event on Sunday 31<sup>st</sup> March in the Dairy Farm Shopping Centre.







Armagh Rhymer's entertaining the crowds and giving lessons to kids on the tin whistle



All sorts of sorts of new dancing experiences and food from various parts of the world.





Slime Workshops



Irish Language Lessons



Men's Shed knitting class



Looks like these two enjoyed the Céili



Community Boxing Event

## Community Renewal – continued

## Footprints Women's Centre

Footprints launched an extension of our Social Supermarket in April 2019. The first Social supermarket in Northern Ireland it now provides families in the Colin area with access to healthy low cost food. The project tackles food poverty and food waste, selling at least 50% below recommended retail price providing an alternative or a progression from food banks. The social supermarket is only one aspect of the project as it will enable people to make positive changes in their lives by connecting families and individuals with support services such as general finance advice, benefits and debt advice, help with Universal Credit claims, health and wellbeing programmes, family cooking programmes, horticultural skills and celebrating food and community.

The store has been a successful tool in engaging those in need including the growing numbers of BME families in the area. Footprints has developed services for Syrian women and their children, providing a translator, language classes, skills development and ongoing support services and activities.





## Sally Gardens Community Centre

### SOCIAL ACTION AND ACTIVE CITIZENSHIP

Sally Gardens have been active in the Colin area over the last year, taking part in numerous social action projects. Including but not exclusive of; Graffiti Removal, Community Clean Ups, Environmental Projects, Safety Campaigns and the completion of a Positive Mental Health Mural in the Brianswell area of Poleglass.

An example of the Safety Campaigns that they youth were involved in is the Railway Safety organised by CNP. The design and display of artwork was produced by young people from Sally Gardens and Saints YC. In addition, young people participating on our volunteer programme have been involved in intergenerational projects and assisting at community events.



### UNITING COMMUNITIES PROGRAMME – COMMUNITY RELATIONS

The aim of this cross community project was about building relationships and breaking down barriers with young people from East and West Belfast. Sally Gardens had been part of this project for over a year. The two age ranges catered for in the project are; 11-16 and 16+. The 11-16 year olds took part in trips and workshops to encourage positive cross community relations. The 16+ group took on the role as young leaders. They gained experience in youth work and completed many OCNs and courses while participating in the project. The group had the opportunity to attend many trips and numerous residential over the course of the project. The project was completed in March 2019 culminating in a presentation night in W5 and the production of an inspirational video.





## **Community Renewal – continued**

## **Sally Gardens Community Centre**

### DIVERSIONARY ACTIVITIES

Sally Gardens was open for additional drop in sessions for young people during times of social unrest and holiday periods where anti-social behaviour is heightened.

Additional sessions this year included Easter, 8<sup>th</sup> August, Halloween, Christmas and the New Year. Each session had in excess of 30 young people off the streets and engaging in positive youth work.

### JUNIOR SUMMER SCHEME

Sally Garden's annual junior summer scheme took place during July and August with a variety of trips and activities. The summer scheme remains a key event in the area with 91 young people attending. The two week programme was a great success. The young people had the opportunity to make new friends, have fun and experience new things.



#### SENIOR CITIZEN FRIENDSHIP GROUP

Sally Gardens' Senior Citizen Friendship group runs every Friday from 12noon-2.00pm. The group get together each week to reminisce and have lunch. This improves their mental health and encourages the older people to keep in touch with other people. It increases their sense of belonging and allows for the seniors to feel part of the community. Members from the Dairy Farm Day Centre attend this group on a weekly basis also.

The group attended a trip to Hillsborough Castle and we had Colin Glen Library come in to give an information session on Internet/Phone Scams.

We had an Intergenerational Christmas Dinner and a trip to The Lyric Theatre in December. The links between the younger and older generation continue to strengthen within this group as we have young people who attend the weekly luncheon group to help with serving the lunches, painting the seniors nails and being a listening ear.

#### PARTY IN THE PARK EVENTS

We had our 'Party in the Park' event in October on Halloween Day. This free family fun day was funded by Belfast City Council.

We had a magic show, play bus, balloon modelling, face painting and much more attend this very successful event in Sally Gardens. It was a great success with 400+ people attending the day.



## CHRISTMAS IN COLIN

In the week leading up to Christmas the Sally Gardens team visited St Kieran's, Good Shepherd and St Therese's Nursery Schools and St Kieran's and Good Shepherd Primary Schools. This took in a total of 881 pupils, all of which received a selection box



## **Community Renewal – continued**

## **Ionad na Fuiseoige**

Ionad na Fuiseoige deliver a number of Irish Language services, including a youth service for children from primary 4 to upper 6<sup>th</sup> in secondary school each Monday evening from 6pm – 8pm for juniors and 8pm – 10pm for seniors, 50 young people benefitting from this service on a weekly basis. .

A leabharlann, or Irish language library with funding from Urban Villages opened recently and now provide a reading group each Wednesday evening which takes place following the Wednesday evenings Irish Language classes. Plans to extend this to include young people in English speaking secondary schools studying Irish to get additional support with home works or exam study are well underway.

In partnership with the local Bunscoil an afternoon schools homework club is available four days per week, which provides excellent support for families where the parents have limited or no Irish.

Cloona Contact Centre are based in the centre each Wednesday evening and Saturday mornings to provide contact for non-resident parents.

The Butterflies Autism parents support group are facilitated in the centre on a weekly basis.

Parenting NI are also regular users of the centre delivering the “Parenting Your Teen” programme, and discussions are ongoing with Belfast MET who wish to use the Centre to deliver a Peace 4 programme for young people in the Colin area.

The music school has developed with approximately 60 children and parents attending classes weekly, now trying to secure funding to provide additional lessons using flutes and harps as the group progresses to various instruments.



## Colin Neighbourhood Partnership

## Economic Renewal/Worklessness

### Footprints Women's Centre

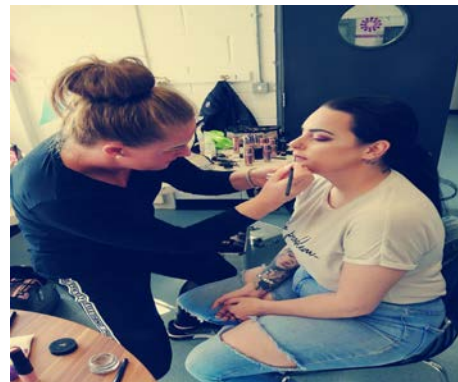
Footprints Food, Education, Employment and Advice project (FEED) works with other local organisations in the area including Sally Gardens, People First and Work west to support women identify steps they can take to move into sustained employment, as well as providing access to a range of services essential in removing barriers to employment such as money advice and childcare.

## Economic Renewal/Worklessness

### Sally Gardens Community Centre

The Building Your Future employability project managed by PCA @ Sally Gardens and funded by European Social Fund, DfE, Urban Villages and supported through Belfast City Council Capacity Build Grant. The objective of the project is to enhance employment and engagement of unemployed and economically inactive participants who reside in the Colin area. We assist and support those most job ready to gain and sustain employment. We subsequently offer as much support and guidance to those who are not job ready, i.e. are economically inactive. In addition, participants receive guidance and support to further enhance their skills and educational attainment qualifications by encouraging them to undertake level 1 qualifications which will further increase their opportunities to gain interviews due to meeting criteria when applying for jobs. Recruitment for year 2 (April 2019 – March 2020) of our Building Your Future Project has been a huge success to date. We provide outstanding support and guidance to unemployed and economically inactive participants, who live within the Colin area of West Belfast.

There are currently 172 participants enrolled on the programme. Individual circumstances are taken into consideration when completing each participant's self-assessment training needs analysis. We recognise that many participants have barriers to progression with regards to mental health issues, lack of confidence or responsibilities for children or other dependants. By taking into consideration, the complex needs of a lot of our participants, we have devised and implemented a training calendar whereby we sourced relevant level 1 units from level 1 award in Vocational Skills to enhance their skills and understanding. We are offering qualifications in Personal Development, such as Personal Confidence and Self Esteem, Setting and Achieving Personal Goals and Improving Assertiveness.



We are also delivering units relevant to Vocational skills, such as Officer Administrator Skills, Customer Services, Filing Skills, Using Word Processing Software and Cooking Skills in a Domestic Kitchen.

A number of participants have recently completed a level 1 qualification in Make-Up Application (32 in total) where they learnt both practical and theoretical skills for applying make-up competently. Several participants are planning to run their own business and are progressing to our Social Enterprise Academy. A group of participants have also completed Construction and CSR training and more importantly have gained employment.

## Ionad na Fuiseoige

A hip hop dancing school 3 days a week is facilitated in the centre with 60 children attending. This supports a local girl to be able to run her own business and we are also working with another parent from the area to try to get a Zumba class started as a business for her.

## Colin Neighbourhood Partnership

## Social Renewal – Education

### Colin Early Intervention Community

**Colin Neighbourhood Partnership** – Children having access to specialist support to enhance their physical and emotional well-being. The following programmes delivered in schools.

**Time4Me** - A therapeutic counselling service for children & their parents/carers. The service operates during term time and school hours and on school grounds. Referrals are made to the service by school staff, parents/carers etc. and delivered by Barnardo's. **73 children supported through this programme during this year.**



Carrie Lindsay – 1 of the Time 4 Me Counsellors

**Speech & Language** - service offered in schools pupils receiving speech & language therapy delivered by South Eastern Health and Social Care Trust Speech Therapists. – **89 children supported through this programme during this year.**

### **Incredible Years Programmes.**

#### **Pre School Dina – Dina Dinosaur Social Emotional Skills and problem solving for ages4-8**

Part 1 = Wally teaches clues to detecting feelings. Part 2 Wally teaches clues to understanding feelings.

Learning words for different feelings. Learning how to tell how someone is feeling from verbal to nonverbal expressions. Increasing awareness of nonverbal facial communications used to portray feelings. Learning different ways to relax. Understanding why different feelings occur. Understanding feelings from different perspectives. Practicing talking about feelings. **156 Children involved in this programme in this year.**

**Mentoring for Achievement** -Mentoring for Achievement Programme (MAP) is an evidence-based programme that uses mentoring procedures to increase school engagement among targeted students who have personal characteristics (for example inattention, disorganisation, disinterest or behaviour problems) that interfere with learning. It is a 2-year, school-based programme based on social learning theory. This is another programme supported via SIF which has ended, again we continued to support 15 young people attending various Post Primary Schools in West Belfast.

#### **Incredible Years Programme – Pre School Dina**

The Dinosaur Social Skills and Problem Solving programme (Small Group Dina) strengthens children's social, emotional and academic competencies such as understanding and communicating feelings, using effective problem solving strategies, managing anger, practicing friendship and conversational skills, as well as appropriate classroom behaviours. This programme can be used effectively in small groups for children aged 3-8 years displaying severe behaviour problems. It is delivered by two trained facilitators to groups of in the school setting for two hours per week over 18-22 weeks. **156 Children involved in this programme during this period.**

### **Other programmes delivered in the community and homes.**

#### **ASD Language Delay**

Teaching children with ASD to improve their communication skills is essential for helping them reach their full potential. There are many different approaches, but the best treatment program begins early, during the preschool years, and is tailored to the child's age and interests. It should address both the child's behaviour and communication skills and offer regular reinforcement of positive actions. Most children with ASD respond well to highly structured, specialized programs. Parents or primary caregivers, as well as other family members, should be involved in the treatment program so that it becomes part of the child's daily life. This programme was delivered a number of times and in various community settings throughout the year, **a total of 92 children benefitted from this programme.**

This 14–16 session program is offered to parents of young children (aged 2-5) on the Autism spectrum or with language delays in order to promote children’s emotional regulation, social competence, language skills, school readiness, and relationships with others.



Parents that completed the ASD Programme

### New Parenting Programme

The Colin Early Parenting Programme led by a Health Visitor supported by 2 family support workers and funded by the Trust/PHA for the past number of years, continued to deliver vital Health Visitor-led support (pre-and post-natal) **to a cohort of 36 mothers and their children (up to two years old)**: in particular, developing activities around breastfeeding and weaning (healthy first foods) support and promoting smoke-free homes.

The Weaning and Breast Feeding support programmes in partnership with Sure Start are offered to the wider community. **80 parents and 80 children were involved in the Weaning programmes and 26 mothers and their children were involved in the Breast Feeding support group.**





**Adolescent Counselling Service** – CNP's funding for this service has now ended, we applied to the Assets Recovery Fund to continue this service, and unfortunately we were not successful. **We did however support 6 young people during this year.**

**Partnership with Parents**- an evidenced-based programme which has proven to deliver better outcomes for children and improved parent/child relationships. This programme was supported via the Social Investment Fund (SIF) which has now ended, we did however manage to support 38 parents on a 1-1 basis during this period.

### **Strengthening Families**

The Strengthening Families Program (SFP) is a nationally and internationally recognized parenting and family strengthening program for high-risk and general population families. SFP is an evidence-based family skills training program found to significantly improve parenting skills and family relationships, reduce problem behaviours, delinquency and alcohol and drug abuse in children and to improve social competencies and school performance. A 7 week programme was again delivered to **15 parents with 33 children** during this period.

### **Changing Lives**

The Changing Lives Initiative is a community-based project creating a better understanding of ADHD and providing an intervention programme for families with children (3-7) experiencing behaviours consistent with ADHD. As well as working with families the programme provides training for those working with young children, in particular teachers and early years' professionals.

The Initiative is a cross-border project and is delivered across County Louth and surrounding border counties, Belfast & Lisburn, and the Argyll & Bute region. The project is supported by the European Union's INTERREG VA Programme, managed by the Special EU Programmes Body.

Since officially launching in November 2017 the Changing Lives Initiative has been making significant progress. The project is working with families, schools and communities in raising awareness of Attention Deficit Hyperactivity Disorder (ADHD). To date, the project has provided an intervention to over 850 families who were concerned about their child's/ children's behaviour, including the delivery of 23 intensive group based programmes for parents. The project has also provided training to over 1,100 professionals working with and supporting children with ADHD.

The project began with the rolling out of Information & Awareness sessions and a screening programme in County Louth and West Belfast in autumn 2017. Last autumn the project, as planned, commenced work in the Argyll & Bute region in Western Scotland, with the project officially launched there in November 2018.

## Mid Project Conference

### An Early Intervention Approach to ADHD: What's next?

The Mid Project Conference for the Changing Lives Initiative was held in Riddell Hall, Queens University on 21<sup>st</sup> May. The purpose of the conference was to offer insights into the current project and its impact on families and the wider community to date.

The conference was very well attended by practitioners, policy makers, researchers and those with an interest in ADHD. The programme included key members of the Changing Lives Team and parents who have benefitted from the programme. Guest speakers included Professor Trevor Spratt, Dr. Kate Carr Fanning and Dr. Siobhan Fitzpatrick. Included in the presentations on the day were interim findings from the three evaluations carried out as part of the project. Parent from each of the three project locations also spoke about their experience of the programme and the positive impact it has had on their families.

The conference also provided a platform to discuss how an early intervention approach, such as this, could be sustained and spread beyond the lifetime of this current project.



## Testimonials

What families completing the programme had to say:-

***"We gained a son through the project. He is a totally different child; the child I knew he could be. We got our family back".***

***'It was hard work for the 5 months of the course but our lives have changed and for the first time in years I can enjoy our little boy. This course has given us so much and I can honestly say that I have never been happier'.***

***'Days out are far more relaxed, we can take him anywhere now. Putting the things the programme taught you in place, just makes things in general so much easier'***

***'I have met a brilliant group of parents and our WhatsApp group is still very much ongoing and our safe place to fall. We all know what it's like and we all have each others' back, When one of us is having a tough day or week, we as a group, are there for each other'.***

***'It was huge knowing other people are going through the same thing. Before that you think it is just you, and no one else is going through the same thing.'***



Clare McGeady – CNP Early Intervention Quality Specialist



Professor Trevor Spratt

CNP's Early Intervention Quality Specialist organised a conference highlighting "Adverse Childhood Experiences (ACE's), Guest speaker Professor Trevor Spratt, Trinity Research in Childhood Centre (TRiCC), Trinity College, Dublin, explained the long term impact, and the importance of early intervention in changing outcomes related ACE's for children, young people and their families.

The event for CNP was an opportunity to bring everyone together to meet, talk, share experiences and take time to re-focus on our commitment to our early intervention approach in Colin.

### **Crescendo – Music Programme**

Working with colleagues in the Greater Shankill Partnership, the Ulster Orchestra, QUB and schools, we have continued to build on the Crescendo programme being delivered to pupils in four primary schools (two of these in Colin). An additional partner in this ambitious programme is the Centre for Evidence and Social Innovation at Queens University Belfast. Right through the programme there will be academic evaluation of the resulting benefits to the children, their families and the wider communities.

Since September 2016 both Colin primary schools, Good Shepherd PS and Holy Evangelists' PS, have re-engaged with the Ulster Orchestra and Primary 1 classes have been receiving weekly tutoring.

As each school year commences a 'new' group of Primary 1 children will experience the music programme in these four schools with eventually all of the school children, - primary 1 to primary 7 - participating. An additional 314 children joined the programme during this year.







Wider community involvement in the Crescendo Project



Local Crescendo Choir members participating in the Fund raising event for Belfast Hospital for Sick Children along with 2 other choirs.

## **Social Renewal – Education continued**

## **Footprints Women’s Centre**

The Centre was chosen as site study visit for Belfast city council’s World Health organisation conference. We were visited by over 30 delegates from countries from across the globe to learn about our model of community participation and learning

Footprints provides a range of capacity building programmes and activities for women and children including; parenting skills, back to work programmes, advice services and health programmes. Our onsite crèche supports women to access programmes and enable the most excluded in Colin to access support and engage in community development activities.

## **Social Renewal – Education**

## **Sally Gardens Community Centre**

Sally Gardens Youth provision is for young people in post primary education. Activities provided include drop in, football, personal development programmes and a range of OCN Qualifications. The programmes are designed and are delivered based on the needs of young people. Our youth team work on a daily basis to help build confidence, self-esteem and teach our young people skills for the future. Each route taken depends on the needs of the individual. We have encouraged young people to continue in education, promoted other education/training options or guided young people into employment.

Through the delivery of OCN qualifications young people have been able to enhance their CVs and gain skills and knowledge in areas that are not specifically covered under the school curriculum. Examples of the OCNs delivered over the course of the year are:

- OCN Level 2 Young People & Youth Justice
- OCN Level 2 Conflict Mediation Skills
- OCN Level 2 Drug & Alcohol Awareness
- OCN Level 1 Community Safety Awareness

These programmes are delivered to hard to reach young people and young people who do not attend school. Therefore, the level of educational motivation in a lot of cases is low. The level of support needed is high. Despite all of the challenges that these young people face, they have still managed to complete the OCN’s.

The centre continues to offer courses in the evening for adults for example, OCN Level 3 Community Development and Essential Skills through Belfast Met.

PCA @ Sally Gardens have developed a comprehensive curriculum targeted at developing the skills of residents and local groups. Partnership and collaboration has been a strategic focus with new partners in the Lagmore area, PCA are working with Lagmore Community Forum and Mount Eagles Community Association securing much needed funds from Urban Villages for adult based training over 2018/2019. PCA, Ionad na Faiseoige and Footprints received funding from Urban Villages to deliver a collaborative programme focused on community based training. In terms of our adult based education and training the curriculum we have continued to deliver centre based training:

- **ILM L2 Team Leadership**
- **ILM L3 Leadership & Management**
- **OCN L3 Certificate in Community Development**
- **OCN L2 Award in Healthy Living**

#### CREATIVE ART PROGRAMME

A creative art programme is delivered each Thursday from 11am -1pm in Sally Gardens. The programme is a fun based activity to engage residents and encourage new friendships. Some outcomes for the group have been improved mental health, increased sense of belonging and increased community participation.



## Colin Neighbourhood Partnership

## Social Renewal – Health



L'Arche (French for 'The Ark') is an international federation of 140 communities worldwide founded on faith and inspired by the gifts of people who have learning disabilities.

L'Arche promotes strong community-based care and support services, and creates opportunities for people who have learning disabilities to take up their place in their local communities, to realise their potential, and to be enabled to make an active contribution to society.

L'Arche group using the allotment site – programmes funded by PHA.



Some of those that attended the Summer Market in August 18 at the allotment site.





Cookery demonstration by Michelin Star Chef Brian Donnelly during the Summer Market event.

## **Characters from Colin fill our TV screens (Article in Andersonstown News)**

**BY BRONACH NI THUAMA**

FROM growing your own fruit and veg, to getting out in the fresh air, or even just enjoying your own little patch of green in the middle of the city, having an allotment is recognised as being good for your mental and physical wellbeing.

Between 2008 and 2009, the Colin Neighbourhood Partnership (CNP) began an initiative to provide allotments for the Colin community in West Belfast, following widespread demand for outdoor growing spaces. Since then, the previously derelict 7.5-acre-site has evolved into one of the biggest and most unique of its kind.

Home to a number of community, mental health and disability action groups, currently there are 112 separate plots, with amateur gardeners from all cultures and traditions tending to them.

Irish language programme Na Cuibrinn on BBC2 this Sunday, is a fascinating look into the lives of some of the local people involved, hearing first-hand about their home life, work and leisure time, and revealing some of the human stories behind this green-fingered group. And we find out why the place has such a draw for those who tend their patch rain, hail or shine and get an insight into the toils of this tight-knit community. Some of the people featured include fire chief Conall, who grew up in the countryside and moved into the city with his Derry-born wife to raise their three children and Antoine and his Spanish-speaking Canadian born wife Elita, who bring their sons to the allotments most weekends regardless of the weather.

Elita is hoping to learn Irish at the allotments from its strong Irish speaking community and Antoine has been tasked with taking charge of the plot this year, something that Elita has excelled at to this point.

Local man Colm is also featured. He has had his allotment for six years. He is a proud father to six-year-old daughter Maebh and he loves nothing more than to get up to his plot with her to work and to play. Aoibheann is Colm's cousin and she has had her allotment for just over three years. An enthusiastic cook, she likes to grow her own fruit and vegetables, but says that the Colin allotments are not only about food – more about community spirit and atmosphere. Mickey has had several plots at the Colin site since it first opened. A very active volunteer, he also works for the council, overseeing allotment sites all over Belfast.

We also hear from Fionnghuala, a primary school principal who often brings the school children up to her allotment to experience an outdoor classroom and to learn where food comes from.

The two-part series, made by Imagine Media for BBC NI, gets to the heart of these characters' lives over the course of a year, as they plant their herbs and vegetables and grow as a community themselves in a little known woodland on the edge of Belfast city.

Na Cuibhrinn is produced by Imagine Media for BBC Gaeilge with support from NI Screen's Irish Language Broadcast Fund. Na Cuibhrinn (The Allotments) BBC 2 NI, Sunday 20 May 10.30pm and Monday 21 May, 10pm.

Source: Andersonstown News - Saturday Edition

Date: Saturday 19 May 2018

## School children - Growing Your Own Programme at Colin Allotments

A number of local school children were involved in a nutritional and horticultural programme at the Colin Allotments in Poleglass. The Grow Your Own Program saw children from 7 local schools learn how to plant and nurture the plants and the nutritional benefits of a healthy diet.

During the academic year, schools including Christ the Redeemer, St Kieran's, Holy Evangelists, Scoil Na Fuisseoige, Our Lady Queen of Peace, Good Shepherd, and Oakwood Primary School enjoyed regular educational visits to the Colin Allotments' Healthy Living Centre.

An outreach programme was held at Christ the Redeemer facilitated by Nutritionist Nicola Cantley. The children were involved in planting and growing their own food products in the schools poly tunnel. Nutrition & Horticulture Programme for Schools supported by Urban Villages



Christ the Redeemer Primary School Pupils



St. Kieran's Primary School Pupils

## Colin Area Men's Shed

It is now recognised that there needs to be a focus on issues that affect men's health, both physical and mental. Men continue to be at greater risk of a range of diseases and conditions; their life expectancy remains shorter, by as much as 5 years than women. Thankfully, men are beginning to embrace healthier lifestyles, eating better, exercising more and cutting down on smoking and alcohol consumption and other risk taking behaviour.

However, there's still a lot of work to be done and this is why CNP established the Colin area Men's Shed back in 2015.

Our programme provides encouragement, assistance and support in improving their lifestyles and reducing their risk of emotional and physical ill health.

An objective of our Men's Shed is to enhance or maintain the well-being of the participants, see below images of some of the activities, programmes those involved in the Colin area Men's Shed are involved with.







The Men's Shed members gained skills in bicycle maintenance with the support of Sustrans. Members attended a full day accredited training course receiving the Velotec Bronze Award by CycleRecycle. Tom O'Dowd from Sustrans, a charity that encourages active travel and cycling said "We are delighted to partner with Colin Men's Shed to provide the training course, with the increasing numbers of bicycles on our roads, never has there been a better time to keep them in good mechanical order"



The "Frame It" recycled easel project, part of Féile anPhobail Community Engagement Programme and supported by Belfast City Council Community Development Project Grant was launched last night in the Ulster Museum, Belfast.

Colin Area Men's Shed used scrap wood and other materials to create their own very unique and personal easels. The easels are now showcasing artwork from young people from Youth Justice who had worked with artists to create their very own masterpieces inspired by museum collections. The exhibition forms part of the Connect Collect Create project by National Museums NI that works in partnership with a range of organisations to deliver positive outcomes for people and communities.



The group also completed 2 City & Guilds qualifications courses in electricity and plumbing.



Colin area Men's Shed and East Belfast Men's Shed involved in a number of projects under the Urban Villages Cross Cutting Theme

## Suicide Prevention

As this year's theme for World Suicide Prevention Day was "Working together to prevent suicide", we organised for all of those involved in suicide prevention in this area to be included in a photograph that shows all of those working together to prevent suicide. All of those invited were from organisations that work day and daily around this theme and others that we call upon when we need to initiate a Community Response Plan and provide additional services etc.

The purpose of this photography (below) was to send out a strong message to this community, letting them know that all these people are there to call upon, that there is always someone to speak to and that help is on their doorstep and accessible.

The image was placed on a double sided bill board on the Stewartstown Road. The image was also reproduced in poster and leaflet form. 50 posters are placed throughout the area, and 5000 leaflets distributed, the back of the leaflet included all the help line telephone numbers needed as well as numbers for Emergency Services, Out of Hours Services as well as numbers for local community and other groups.

**Useful Numbers**

Alcoholics Anonymous Help Line 0845 769 7555  
Alcohol and You 0800 2545 123  
ASCERT 028 9250 4422  
Caring Communities Safe & Well 028 9255 5141  
Citizens Advice 0800 028 1881  
Colin Area Men's Shed 028 9062 3813  
Colin Community Counselling 028 9050 4347  
Colin Neighbourhood Partnership 028 9062 3813  
Colin Sure Start 028 9050 1417  
DAISY Project 0800 254 5223  
Emergency services 999  
Falls Community Council 028 9020 2030  
Footprints Women's Centre 028 9032 3444  
Gamblers Anonymous 028 9024 9185  
Good Morning Colin 028 9082 7883  
Life Line (24hr service) 0808 808 8000 (free number)  
MACS Supporting Young People 028 9031 3183  
Parents Advice Centre 0805 801 0722 (free number)  
Saints Youth Centre 028 9030 1037

Sally Gardens 028 9062 7250  
SEELB Colin Youth Development Centre Hub 028 9062 9799  
SEHSCT Health Development Specialist for Suicide Prevention  
028 9250 1373  
Suicide Awareness Support Group 028 9023 8967  
Samaritans 08457 809090  
Well-being Hub 028 9598 8003  
Women's Aid 028 9066 6049  
Women's Aid 24-hour service 0808 802 1414  
Youth Initiatives 028 9030 1174

Christ the Redeemer Parish 028 9030 9011  
Our Lady Queen of Peace Parish 028 9061 6300  
Parish of the Nativity 028 9062 5739  
St. Luke's Parish 028 9061 9459

Woodbrook Medical Centre 028 9060 2931  
Out of hours GP - Belfast 028 9074 4447  
Out of hours GP - Lisburn 028 9260 2204

**IN THE CASE OF MORE URGENT SUPPORT AND ADVICE CONTACT**  
Your GP or the out of hours GP service.  
The Emergency Department of your local hospital.  
Lifeline: 0808 808 8000.  
Domestic Violence Helpline 0800 917 1414  
(Your number will not appear dialling 1471).

Working together to prevent suicide in the Colin area

Colin Neighbourhood Partnership

**Useful Numbers**

Members of the Men's Shed are working with Queens Researcher Shane O'Donnell to develop an Art based intervention as a vehicle to Promote Mental Health & reduce risk among men.

In N.I. the male suicide rates are 3 times greater than the female rate. West Belfast is one area in recent years that has experienced higher numbers of suicide.

The Arts based intervention is an innovative approach that has been shown to promote mental health & wellbeing. However, many of these interventions are not developed with men in mind which results in low participation from men.

Queens hope to develop an arts based intervention that is relevant and enjoyable for men. They want to ensure that what they create is realistic and tangible for service providers also.

Members of the Men's Shed have agreed to assist with the development of a programme and the Suicide Prevention Task Group members including service providers have also agreed to assist.

## GIMME 5

GIMME 5 - is a new resource designed to support workers to promote the positive wellbeing messages with young people by Raising Awareness of The Five Ways to Wellbeing and how these support good mental health and wellbeing as well as providing a range of activities to help young people explore and develop their personal strengths and resilience.

12 local youth workers completed the 3 hour training session which includes the GIMME 5 manual and how it can be used in the work place setting. Each participants was provided with a copy of the manual and the colour coded 5 ways to wellbeing armbands.

The Five Ways to Wellbeing are a set of practical, evidence-based public mental health messages aimed at improving the mental health and wellbeing of everyone. They were developed by the New Economics Foundation (NEF) and commissioned by Foresight, the government's think-tank on Mental Wellbeing <http://www.neweconomics.org/publications/five-ways-well-being-evidence> who have advised that adopting the Five Ways to Wellbeing "Steps can increase life expectancy by 7.5 years". During the last quarter of this period 200 young people from St. Colm's High School and 20 of their parents participated in this information and awareness sessions over a period of 1 week facilitated by Education Authority Youth workers and CNP's Youth Inclusion Worker.



## Colin Annual Drug & Alcohol Seminar “The real cost of drugs to our community and what we can do about it”



Fr. Magill, Annie Armstrong  
& Jim McCarthy



Ed Siplar, SEHSCT Addiction  
Team



Members of the audience



**West Belfast Community Drugs Panel Report June 2018**, highlighted many issues in respect of the affects of drugs in the Belfast area.

The Colin Drug and Alcohol Forum wanted to focus on the issues highlighted below at their annual conference and provide a little more detail about these issues.

### **Some highlights of the report**

*The West Belfast drugs issue is directly related to the area being affected by systemic poverty and the legacy of the NI Conflict and, unfortunately, this looks set to worsen over time. There will never be a fundamental change for west Belfast without addressing the poverty and conflict legacies. Multiple evidence exists to support this and has been highlighted over many years.*

*There is a direct link between the high levels of poor mental health (especially trauma) and substance misuse in west Belfast.*

*A culture of normalising and socially accepting drug misuse exists in west Belfast. This is influenced significantly by family attitudes as well as the wider community attitude towards this issue.*

*Drug misuse and addiction exists in many forms in the area. Addiction is happening for a variety of reasons including trauma, life pressures, home environment, as a result of chronic pain, because it is a social norm and because of peer pressure.*

*Local people are taking too many risks when they are using and mixing substances (drugs and alcohol); some have died as a direct result of not understanding the potency of substances and by mixing lethal combinations. Further, they do not fully appreciate or understand the physical and psychological impact they are having on their families and the local community*

*There are a wide variety of local people misusing substances, regardless of age (it is not just a 'young' issue).*

*Families affected by substance misuse and addiction are isolated, stigmatised and helpless to deal with the situation they face. They report they have nowhere to turn to and therefore are dealing with the situation by themselves.*

The participants at the conference heard testimonials from various people including Fr. Martin Magill, Jim McCarthy CRJI, and Pamela from ASCERT, as well as a number of family members directly affected.

The testimonials explained how many people got caught up in drug misuse because of traumatic experiences, “*Adverse Childhood Experiences*” (ACE) that were either undetected or ignored.

And because families were unsupported and didn't know how to deal with this ACE's they then used whatever means to support their family members and believed they were helping and assisting the victims.

The Chairperson at the conference, Annie Armstrong along with Fr. Magill reiterated the issues many families and individuals who are directly affected by drugs and alcohol misuse, and ask the audience to consider the testimonials they heard and stated that “sometimes we as a community have a lack of information and understanding and very often misjudge people and therefore we as a community need to be a bit more empathetic, and need to be doing more to lobby for the appropriate services and support for those who are at the coal face of these issues”

## Social Renewal – Health continued

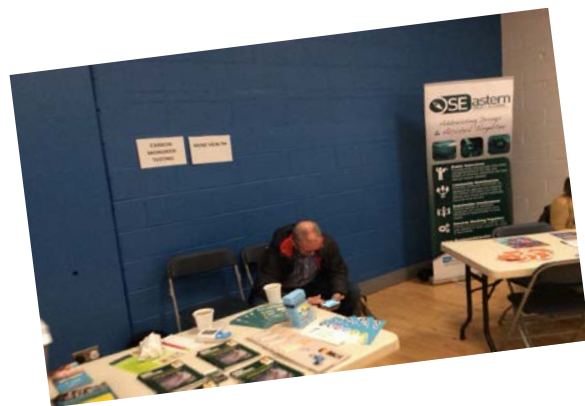
## Footprints Women's Centre

Footprints Community Shop enables families in the Colin Neighbourhood who are experiencing food poverty to purchase healthy food at low prices (fruit and vegetables, fresh meat and fish) and access a range of advice services and empowerment programmes. The project provides opportunities for families to build the stepping stones towards making the changes that will improve their lives. The project has a chilled van which delivers food/meals to vulnerable members of the community. Footprints received a Belfast Healthy Cities award in December 2018 for its innovative approach to health improvement.

## Social Renewal – Health

## Sally Gardens Community Centre

To ensure continual promotion of Health and Wellbeing in the Colin Area, we at Sally Gardens arrange community events to help with this. In November 2018 we had a great turnout for our health and wellbeing day with a range of free services available on the day such as Cholesterol checks, blood pressure, Diabetes, skin cancer and much more. We also had the Action Cancer Big Bus present which was fully booked. Local businesses attended and provided free haircuts and pampering sessions for anyone who was interested.



Further to a needs analysis of the young people in the Colin Area, we developed and delivered a yoga and mindfulness class to young people aged 10-12 years old. The progressions we have seen from these classes have been excellent. Testimonies from parents and young people have shown how successful these classes have been and the need for this project to continue is evident.

The centre is used by a number of different groups over the course of the week and over the year. On a weekly basis services are offered through Lenadoon Counselling, Mindwise and New Life Counselling. Falls Community Council run an advice clinic available to people every Wednesday and Alternative Therapies by Bridge of Hope are also on offer.

The centre is used by sports, drama and music groups. The service provisions offered to the community are Gymnastics, one to one music lessons with the Ulster Orchestra, fitness classes, art sessions and adult learning courses.

Colin Men's Shed use the centre on a weekly basis for Guitar lessons, indoor bowls, walking rugby and snooker.

Dairy Farm Day Centre also avail of the services which are provided and the group, which is from the South Eastern Trust, use the centre for Hip Hop each week. They also attend the senior's friendship group on a Friday and also get to make use of the snooker tables.

These links that the centre have with the groups and the local community are a vital part of the work that we do.

PCA @ Sally Gardens is Healthy Living Centre and a member of the regional Healthy Living Alliance and involved in a number of sub groups such as Physical Activity and Mental Health. The purpose of our involvement in the Healthy Living Alliance is to provide a strategic direction in terms of health & wellbeing.



Healthy Living Centre Alliance

PCA @ Sally Gardens are at the business case stage for a 25 station gym, the project will be funded by Urban Villages and we are hopeful this will come to fruition as the health and wellbeing benefits will be of strategic importance.



## Colin Neighbourhood Partnership Social Renewal Crime

### Community Safety/Crime Prevention/Environment

CNP's Community Safety sub group brings together all those statutory organisations who are responsible for community safety as well as many voluntary and community organisations to work towards a vision of a Safer Colin with a view to embed community safety and partnership working to achieve a cultural change and behaviour working practices within community safety organisations. This is to help ensure people are safe from crime, disorder, danger; and that the community is informed and supported to enable them to be able to take some responsibility for their own wellbeing.

Our annual community safety day took place once again at the Dairy Farm Centre, we were relieved to be able to provide this event in December 2018 as we had to cancel in the previous year due to adverse weather.

We believe this is an important event that reminds the residents of services that are available and how to access them. It is also important that individuals from the various services attend to enable residents to raise crime and community safety issues and receive advice on how to keep themselves, their families and their community safe. Residents received free materials to help provide safer homes, i.e. window and door locks, door and personal alarms as well as other security items.

The inclusion of school children guarantees that adults, parents, grandparents and other family members attend this event as they are always eager to witness their children engage in public events which instils a sense of pride in the community.



Paul Cleary PCSP



Radius Housing



BCC



Men's Shed always have to get in the picture



Children from various Primary & Nursery Schools providing the entertainment with Christmas Carols



Get your FREE Beat the burglar kit at your local distribution event on  
**Wednesday 21<sup>st</sup> November 2018 at 12pm**

Mount Eagles Community Centre, Belfast BT17 6XN

Please note that kits must be signed for by the householder and are limited to one per household

[www.belfastcity.gov.uk/PCSP](http://www.belfastcity.gov.uk/PCSP)



Colin Neighbourhood Partnership promoted and supported representatives from the Police and Community Safety Partnership to deliver the “Beat the Burglar” events at various venues throughout the Colin area.



## Community Safety Art Competition



Some of those who participated in the competition

Our annual “Support Essential Services” art competition got children from local schools fired up once again to compete. Several school children from the Colin area were guests of honour at City Hall for the annual Community Safety Art competition and received their presentation and certificates from Lord Mayor Deirdre Hargey. This annual project is part of CNP’s commitment to work with and involve the local community in issues that affect the local area.

The annual initiative has had a significant affect in raising awareness among young people and reducing attacks on buses and other essential services over the last number of years.



Participants from Good Shepherd Primary School with their Principal Damian O'Neill and Lord Mayor Deirdre Hargey



The Winning Posters to be displayed in all buses operating in the Colin area. designed by Abbi Gallagher, St. Kieran's P.S. and Clíodhna Johnston Scoil na Fuisceige P.S.

## Environment

At the commencement of spring each year members of the local community are urged to get involved in a week long environmental scheme designed to brighten up the Colin area. Colin Environment Week includes a variety of environmentally focused events in the area including community clean ups and graffiti blitzes, all in the name of creating a greener and cleaner environment.

CNP coordinated teams to target litter hotspots, repaint fences, remove graffiti and organise rubbish pickups. Help from the community to carry out these tasks was encouraged and CNP provided litter pickers, gloves and black bags to volunteers willing to help improve the look of the Colin neighbourhood.

As a recognition of all the good work, Belfast City Council supported a Family Fun Day that included cooking demonstrations, face painting, junk art workshops and many freebies.



Residents throughout the area helping to improve the look of their own neighbourhoods with the help of Conservation Volunteers, BCC and Housing Associations.



Supporting Locals to build their very own beehives



Planting at Michael Ferguson roundabout



St. Kieran's Primary School Pupils establishing their very own raised bed.





Men's Shed members and CNP staff clearing an area at the Colin Allotments site to establish a Fairy Trail path at Colin Allotments

## Social Renewal Crime – continued

## Footprints Women's Centre

Colin has a rising level of domestic violence and Footprints continues to support women and families experiencing domestic abuse. Footprints also chair and organise Colin Domestic Violence Forum. We organise the Circle of Hope event each March to raise awareness of domestic violence as an ongoing issue in the community.

## Social Renewal Crime

## Sally Gardens Community Centre

Through the programmes delivered in Sally Gardens we aim to help reduce the level of crime in the Colin Area. Knowledge and education is key to helping this:

- OCN Level 2 in Drug and Alcohol Awareness – This programme is ideal for highlighting the dangers that are involved in Alcohol and Drug Misuse. It also educates the participants in the resources available to help if needed.
- OCN Level 1 in Community Safety Awareness – Educating young people around community safety is extremely important. This course makes the participant think about what is antisocial behaviour and the consequences of getting involved in such behaviour.

OCN Level 2 in Conflict Resolution Skills – This course teaches the participant skills and coping mechanisms to help deal with conflict. It makes the participant think, not only about how they react in certain conflict situations and the consequences of this; but also gives alternate ways of handling such situations



Our summer intervention, summer scheme, trips, centre based activities and drop in certainly helped to reduce anti-social behaviour in the Colin area, feedback from NPT PSNI and community partners have reinforced the fact the summer was particularly quiet due to all you providers working in collaboration.

## Colin Neighbourhood Partnership

### Physical Renewal Completed work during the reporting period

#### Colin Eco-Healthy Living Centre



Much needed additional storage space at the centre



Provision of a covered boot room and hand washing facilities

The Healthy Living Centre opened in September 2015, since then the project has been used by thousands of individuals from the Colin area and beyond participating in health living activities.

The healthy living centre was originally funded by PEACE III funding. The main aims of the PEACE III Programme were to reinforce progress towards a peaceful and stable society and to promote reconciliation by assisting operations and projects which helped to reconcile communities and contribute towards a shared society for everyone. The healthy living qualified for funding under the priority heading of contributing to a shared society. The building was delivered on the above theme by building positive relations at the local level and creating a shared public space. The underlying objectives of the original funding have been very important in the evolution of the project. Since the building was opened on the allotment site it has excelled at being a building free from any particular identity and has been used by / visited by groups from throughout Ireland and beyond.

At the time of the original build there were limited funds available to develop all the additional extras that would enhance an already beneficial project.

The capital project supported through Urban Villages improved the capabilities of the building by creating two new toilets, creating a covered boot room around the front door of the building. Developing an outdoor hand washing area, creating additional space for storage and adding French doors allowing easier access to the paved patio area.

These improvements allow larger groups of people to use the building. The additional capital works also enables a number of groups to use the building simultaneously i.e. one group could be outside learning about horticulture while another group is inside learning about nutrition.

The additional capital spend allows this unique project to achieve its full potential.

### **Physical Renewal – continued**

### **Footprints Women's Centre**

Footprints have recently extended its Community Food store and Deli services to include disability access. We have also expanded our food growing project and orchards taking over derelict space in an anti social hotspot.

Our solar panels generated 30% of our electricity and hot water and reduced our carbon emissions by over one tonne.

We have provided over nine tonnes of food to families experiencing food poverty and diverted this from going to landfill.



## Ionad na Faiseoige

### A new purpose built Ionad na Faiseoige family centre in Twinbrook



Mac Giolla Mhín, Director of Ciste Infheistíochta Gaeilge, Geoff Beattie, Department for Communities, Dr Mark Browne, Director, Strategic Policy, Equality and Good Relations at The Executive Office, Moira Doherty, Deputy Secretary at DfC, Theresa Brady, Manager, Ionad na Faiseoige, Proinsís Ó Labhradha, Chairperson, Ionad na Faiseoige and Annie Armstrong, Manager, Colin Neighbourhood Partnership.

The development has created a hub for a range of services including family support services and community education, personal development, arts/cultural projects, social economy day care, a theatre and a café for the community in the Colin Neighbourhood renewal area

Partnership working between the Department for Communities (DfC), The Executive Office (TEO), Ciste Infheistíochta Gaeilge, Colin Neighbourhood Partnership and Ionad na Faiseoige delivered the project.

Moira Doherty, Deputy Secretary at DfC, said: “A number of partners collaborated to deliver this new facility for West Belfast. The centre will provide opportunities for a wide range of citizens to participate and engage in educational, social and leisure activities, enabling them to live more active and healthy lives.

“As lead partner, the Department provided £876,000 through the Neighbourhood Renewal Investment Programme. Our aim has been to provide a facility for Twinbrook that meets the objectives of our People and Place Strategy - to invest in neighbourhoods, to develop confident communities and to improve their quality of life.”

Ionad na Faiseoige Chairperson, Proinnsóis Ó Labhradha, said “This project symbolises the hard work of everyone involved in creating this state of the art facility not only for the Irish speaking community but the entire Colin community and I am delighted it will remain a community asset for years to come. I would like to thank The Department for Communities; The Executive Office; Ciste Infheistíochta Gaeilge and Colin Neighbourhood Partnership who provided the financial support to make it happen.”



New Classroom



Facilities for sewing and crafts

## Physical Renewal Completed work during the reporting period.

### Twinbrook Link

The Twinbrook Link provides better connectivity across the Colin area; between the Colin Connect Transport Hub and Civic Square, the new underway Brook Leisure Centre in Twinbrook and the New Park planned for the centre of Colin. The Urban Villages Initiative is investing in new pedestrian and cycle routes with an improved lighting scheme and landscaping to create an open, safe and well-connected route through Colin. This project delivered by the Department for Communities is a very much welcome change to an area that was previously seen as an anti-social hot spot for many residents, the owners of the Health Centre and the local Pharmacy. The space is now seen as a very safe, well maintained and welcome area.



Twinbrook Link – new pedestrian and cycle routes.  
Extensive environmental scheme with improved lighting for safety and accessibility.

## **Physical Development Projects Underway.**

### **Planning is approved for new park and playground in Colin**

Planning approval has been granted for a new park and playground which will significantly transform the Colin Area. Situated between the Stewartstown and Pantridge road, this development is being funded by the Executive Office, through the Urban Villages Initiative and will include four main active zones.

The park will have

**Identity** - a place that celebrates natural habitats, local heritage and culture.

**Comfort and safety** - high quality that's practical, safe and sustainable.

**Connectivity** - well linked with surrounding neighbourhoods.

**Flexibility** – a place that can be used throughout the year with educational activities and animation.

The play and imagination zone's playground will have a range of accessible and sensory equipment, enabling children of all abilities to play safely together.

The activity and interaction zone has space for outdoor fitness and a cycle pump track as well as marked routes for walking, jogging, running and cycling.

The community and leisure zone will be a large grass area with reinforced surfacing and drainage, allowing for a full programme of events such as summer festivals, concerts, community fun days, markets and fairs.

The learning and exploration zone will be a place that can be used by all visitors and by local groups and schools as an outdoor classroom area.

**It is estimated that the park will be completed in 2020**



## Artists images used during the public consultation



### New Brook Leisure Centre Underway

Work is well underway on the new £15 million Brook Leisure Centre – part of a £40 million investment by Belfast City Council in west Belfast. Brook is just one of seven new leisure centres the council is building as part of its £105 million Leisure Transformation Programme.

Each of the new centres has its own unique selling point and the emphasis at Brook is on outdoor leisure provision but the existing 3G pitch continues to operate as the work is ongoing.

- A second 3G pitch for Gaelic and soccer
- Three covered and three uncovered 3G five-a-side pitches
- A hurling wall
- Other facilities will include:
  - A 25 metre, four lane pool – bringing swimming provision to the Colin area for the first time
  - A sports hall
  - A 60 station fitness suite
  - An exercise studio
  - A spin studio
  - A playground and outdoor gym



Images of the site in its current state



The image to the left is the current leisure centre facility provided by Belfast City Council for the entire Colin population.

As you can see this was a very poor and not fit for purpose space with limited recreation facilities for a very large and growing population with a massive population of young people.

The residents of the Colin area are extremely excited about the new facility and can't wait for this new centre to open. It is due to be opened late December 2019.

### **Community Hub**

The business case for the development of the Community Hub is ongoing, conversations and consultations with Libraries N.I., South Eastern Health & Social Care Group, Dept. for Communities and many community groups continue. It is envisaged that the Business Case will be complete by the end of 2019.

## Colin Neighbourhood Partnership 2018/2019 Expenditure (by Strategic Objective)

The following table details current projects funded via the Neighbourhood Renewal Investment fund. It also details the 2018/19 individual spend for each project, the total amount of expenditure by strategic objective and the overall 2018/2019 total expenditure in the Colin Neighbourhood Renewal Area.

Programme/Project	CFF Funding Period	CFF Funding Amount (Project allocation)	18/19 Spend (as at 31/03/19)
<b>Community Renewal (3 projects)</b>			
<b>Core Salaries and Overheads</b> Colin Neighbourhood Partnership	<b>01/04/18- 31/03/19</b>	<b>£119,161</b>	<b>116,149</b>
<b>Community Development Priority Partner organisation under the Community Development Project:</b> Colin Neighbourhood Partnership Footprints Women's Centre	<b>01/04/18- 31/03/19</b>	<b>£98,243</b> <b>£37,340</b>	<b>£95,599</b> <b>£37,042</b>
<b>Total Community Renewal Expenditure</b>		<b>£254,744</b>	<b>£248,790</b>
<b>Social Renewal – Education (4 projects)</b>			
<b>Early Intervention – Community</b> Colin Neighbourhood Partnership Ionad na Fuiseoige Poleglass Community Association @ Sally Gardens Youth Initiatives NI	<b>01/11/18 – 31/03/19</b>	<b>£47,391</b> <b>£34,126</b> <b>£30,946</b> <b>£21,662</b>	<b>£47,391</b> <b>£34,126</b> <b>£30,946</b> <b>£20,881</b>
<b>Total Social Renewal Ed Expenditure</b> <b>Note: Early Intervention programmes have impact on both Education and Health priorities.</b>		<b>£134,125</b>	<b>£133,344</b>

Programme/Project	CFF Funding Period	CFF Funding Amount (Project allocation)	18/19 Spend (as at 31/03/19)
<b>Social Renewal – Health (2 projects)</b>			
<b>Health &amp; Wellbeing Priority Partner organisation under the Health and Wellbeing project:</b>	<b>01/04/18 to 31/03/19</b>		
Colin Neighbourhood Partnership		<b>£83,589</b>	<b>£82,691</b>
Footprints Women’s Centre		<b>£40,225</b>	<b>£40,225</b>
<b>Total Social Renewal – Health Expenditure</b>		<b>£123,814</b>	<b>£122,916</b>
		<b>Total Allocation</b>	<b>Total Spend</b>
<b>TOTALS</b>		<b>£512,683</b>	<b>£505,050</b>

In the 2018/19 financial year, *Colin Neighbourhood Partnership* total overall spend was **£505,050\***

\*This does not include services delivered on a West Belfast wide basis and across the Greater Belfast area. These services received £1,199,450 in 2018/19 from Neighbourhood Renewal Investment Funding.



## ACHIEVEMENTS OF NEIGHBOURHOOD RENEWAL FUNDING IN 2018/19YEAR

### Community Output Measures

	<b>Colin Neighbourhood Partnership</b>	<b>Footprints Women's Centre</b>	<b>Youth Initiatives</b>	<b>Poleglass Community Association @ Sally Gardens</b>	<b>Ionad na Fuisseoige</b>
CR(1)/O1 - Number of people participating in community relations projects	12,244	181	219	325	
CR(3) - Number of people volunteering for community development activities			91	25	35
CR(4)/O6 - Number of people engaged/involved in unpaid voluntary work	183	70			
CR(5) - Number of people receiving training in community development skills/capacity building	727	217			
CR(6) - Number of people using new or improved community facilities		337			
CR(7) - Number of community/voluntary groups supported	55	21			
CR(8) - Number of community relations projects supported	40	5			
CR(10) - Number of people using existing community facilities		1,268			
CR(16) - Number of direct referrals to other support services	523				

## Education Output Measures

	<b>Colin Neighbourhood Partnership</b>	<b>Footprints Women's Centre</b>	<b>Youth Initiatives</b>	<b>Poleglass Community Association @ Sally Gardens</b>	<b>Ionad na Fuiseoige</b>
SR(Ed)1/B5 - Number of childcare/nursery school places created/safeguarded					
SR(Ed) 3 / B1 - Number of pupils whose attainment is measurably enhanced/improved	226				60
SR(Ed) 4 - Number of pupils whose behaviour is measurably enhanced/improved	331				
SR(Ed) 5 / B8 - Number of people engaged in parenting/skills development programmes	720				
SR(Ed)13 / B1 - Number of pupils whose attainment is measurably enhanced/improved against baseline position	657				
SR(Ed) 14 - Number of young people directly benefitting from the project					
SR(Ed)27 - Number of people engaged in parenting skills/development programmes					26

## Health Output Measures

	<b>Colin Neighbourhood Partnership</b>	<b>Footprints Women's Centre</b>	<b>Youth Initiatives</b>	<b>Poleglass Community Association @ Sally Gardens</b>	<b>Ionad na Fuiseoige</b>
SR(H)1 - Number of people benefitting from healthy lifestyle projects	2,882	1,602			
SR(H)2/C1 - Number of people attending health education/awareness initiatives	0	166			
SR(H)3/C4 - Number of people accessing intervention/treatment services	907	0			
SR(H)4 - Number of health education/awareness initiatives provided/delivered	42	0			
SR(H)6 - Number of people participating in suicide prevention projects	446	425			

## Social Renewal - Crime Output Measures

	<b>Colin Neighbourhood Partnership</b>	<b>Footprints Women's Centre</b>	<b>Youth Initiatives</b>	<b>Poleglass Community Association @ Sally Gardens</b>	<b>Ionad na Fuiseoige</b>
SR(C)1 - Number of people receiving advice on crime prevention	320				
SR(C)6 - Number of young people benefitting from youth inclusion/diversionary projects			252		

### Physical Renewal Output Measures

	<b>Colin Neighbourhood Partnership</b>	<b>Footprints Women's Centre</b>	<b>Youth Initiatives</b>	<b>Poleglass Community Association @ Sally Gardens</b>	<b>Ionad na Fuiseoige</b>
PR4 - Area of land improved and made ready for shared space					<b>1</b>

### Economic Renewal Output Measures\* from April 2017

	<b>Colin Neighbourhood Partnership</b>	<b>Footprints Women's Centre</b>	<b>Youth Initiatives</b>	<b>Poleglass Community Association @ Sally Gardens</b>	<b>Ionad na Fuiseoige</b>
ER4 - Number of people receiving job specific training				252	
ER6 - Number of people receiving non job specific training e.g. first aid	378				
ER11 - Number of social economy enterprises created/supported	2				
ER14 - Number of people attaining a formal qualification from participation in adult education				121	
ER15 - Number of FTE jobs safeguarded	10	3.7	1	1	1



## ***Colin Neighbourhood Partnership***

### **Conclusion:**

Because of the Colin Town Centre Masterplan the Colin area was named as one of the first Urban Village areas. This has resulted in many major physical improvements projects either completed or underway. Funding for these projects was secured from Urban Villages, Social Investment Fund, Belfast City Council, Dept. for Infrastructure and Dept. for Communities. The projects include, the Rapid Transport System, which for the first time in the history of the area has provided a fit for purpose public transport system that provides public transport services between each of the housing estates; the transport system included the Colin Connect Hub. Other new community facilities, Lagmore Community Forum new build, new build Ionad na Fuiseoige family centre, Twinbrook Link, new roof for Cloona House, new facilities at Sally Gardens, improvements at Colin allotment site, all of which are completed in this reporting period. Projects underway are the Urban Park that will be sited on Stewartstown Road, a new Leisure Centre, new Holy Evangelists Primary School both in Twinbrook and enhanced facilities at Footprints Women's Centre.

While the Colin community recognise that they have waited a very long time for these changes and recognise that in comparison to other parts of Belfast that we are really just catching up, they are absolutely delighted with the changes that have taken place in the past 3-4 years and are really excited and can't wait to see what's coming next. These developments have created a real sense of community, a sense of a safer place and residents are extremely proud of their area.

Pockets of deep social need, particularly health and well-being issues continue to persist in the area. Collin Glen 2 is the second most deprived Super Output Area in Northern Ireland while a number of other SOAs indicate high levels of need.

7 of 11 SOAs fall within the top 4% overall deprivation rank for health.

4 of the SOAs fall within top 16% overall deprivation rank in relation to standardized preventable death ratio

7 of the 11 fall within top 4% disadvantaged Physical Health ratio – Colin Glen 2 is ranked No; 1

3 of the 11 fall within top 12% disadvantaged registered with cancer (excluding skin cancer) One of these area is ranked No. 18 Poleglass 1

4 of the 11 fall within top 10% disadvantaged - emergency admissions, 2 others within the top 16%- Colinglen 2 No. 6

5 of the 11 fall within top 5% disadvantaged – Children's Dental extractions, 4 others fall within the top 10%

6 of the 11 fall within top 6% disadvantaged – People on multiple prescriptions, 4 others fall with top 10% one ranked at No. 6 Colinglen 2

7 of the 11 fall within top 7% disadvantaged – People with long term health problems or disability. Colinglen 2 ranked No. 1

7 of the 11 fall within top 5% disadvantaged – Combined Mental Health Indicator. Colinglen 2 ranked No. 4

The level of claimants remains relatively high as compared to the Northern Ireland average, particularly amongst the long term unemployed, unemployment and under-employment persists across the SOAs in Colin.

### **Multiple Deprivation Measure –**

All 3 SOAs in the Colinglen Ward fall with the top 7% most deprived wards. 1 SOA in the Kilwee Ward is within the top 12%., 1 area in Poleglass ward within top 4% and both SOAs in the Twinbrook ward fall within the top 5%.

### **Income Ranking**

Twinbrook 2 SOA falls within the top 10% most deprived SOAs in Northern Ireland with a further five SOAs ( Colin Glen 3, Colin Glen 2, Poleglass 1) falling with the top 20% of the most deprived SOAs.

### **Employment Domain Rank**

The Employment Domain ranking reveals the extent of employment deprivation of Colin residents. Seven SOAs fall within the top 5% of SOAs in Northern Ireland and Kilwee 2, within the top 6% of all SOA's,

### **Education, Skills and Training Domain**

Colin Glen 3 (11), Colin Glen 2 (30), Poleglass 1 (40) fall within the top 5% of most deprived SOAs while (Colin Glen 1 (50) and Twinbrook 1 (70) fall within the top 10% of most deprived SOAs in Northern Ireland.

### **Crime and Disorder Domain**

Three of the SOAs fall within the top 10% of most deprived areas in terms of Crime and Disorder domains. These are Poleglass 1 (82), Kilwee 2 (67). and Colin Glen 3 (45).

As evident from the information highlighted in this report we at CNP and all our partners need to continue to address many of the issues that affect this community in the best way we can in terms of resources that are available.

It is very clear that additional and better resources and services are very much needed in relation to addressing the health issues affecting this community. The organisations that are responsible for providing appropriate and relevant health services for this community clearly need to do a much better job, need to provide services that will make demonstrable improvements in the health and wellbeing of this population.

We work with many community voluntary and statutory agencies some of which are mentioned below.

**Early Intervention**, CYPSPB, HSCB, PHA, SEHSCT, SEUPB, Colin Sure Start, NCB, Barnardos, local Schools and many others to continue to deliver on our Early Intervention Strategy, this work continues to produce very positive outcomes for thousands of children and their families.

**Community Renewal**, Sally Gardens, Ionad na Faiseoige, Footprints Women's Centre, Youth Initiatives, Education Authority (Colin Youth Development Centre), Good Morning Colin, Ulster Orchestra, Saints Youth Centre, Libraries N.I., Age N.I., Job Assist, Positive Futures, Belfast City Council, Belfast Hills Partnership and of course our many volunteers.

## **Health**

**SEHSCT, all depts.**, (Community Health, Emotional Well Being, Community Mental Health Team, Family Intervention Team, Social Services, Well Being Hub, Family Support Hub), CLEAR (HSCB), PHA, Life Line, Inspire Well-Being, Newlife Counselling, New Colin Community Counselling, Colin Community Allotments and many others.

**Community Safety**, PSNI, NIFRS, PCSP, BCC, Transport N.I., NIHE, all Housing Providers, Safer Neighbourhoods Project, Community Restorative Justice Ireland and many more.

CNP and its partner organisations will continue to work collaboratively to deliver services across the Colin area and will continue to work together to further develop areas of partnership to increase and improve services for all the residents of Colin

**Clearly none of this work would take place without the support from Department for Communities who provide us with resources to employ our core community development team, management in terms of the overall strategy and the early intervention team.**

Below included is information regarding our marketing/communication and public relations activities, this work is vital in enabling us to communicate with local residents which results in increased feedback, participation, identification of needs and ensuring community focused activities. Our aim is to reduce communication barriers by producing easily understood messages in relation to consultations and plans that result in ownership of the discussions and reduces negativity, this approach also helps us to make sure that residents are provided with opportunities to have their say.

It is clear that the marketing activity has been the vehicle that encourages local residents to participate in all of our events and activities as each time an event is organised we see growing numbers attending.



Marketing and Communications Activity April 18 - March 19.zip

Visit us at <http://www.newcolin.com> for further details on the activities and programmes at CNP supported through Neighbourhood Renewal and others:



**Department for Communities – Community Empowerment Division**  
**West Belfast Team**  
**4<sup>th</sup> Floor, NINE Lanyon Place BELFAST BT13LP Telephone: 028 9025 0913**





Available in alternative formats

© Crown Copyright 2020