



Coleraine

Neighbourhood Renewal Area

Annual Report
2018/19



Northern Ireland
Statistics and Research Agency



DfC

Department
for Communities

www.communities-ni.gov.uk

Coleraine Neighbourhood Renewal Partnership ANNUAL REPORT 2018-19



About Neighbourhood Renewal -

The Neighbourhood Renewal Programme aims to reduce the social and economic inequalities which characterise the most deprived areas. It does so by making a long term commitment to communities to work in partnership with them to identify and prioritise needs and co-ordinate interventions designed to address the underlying causes of poverty. Neighbourhood Renewal Partnerships were established representative of local community interests together with appropriate Government Departments, public sector agencies, private sector interest and local elected representatives.

About Coleraine Partnership -

To take forward the Neighbourhood Renewal Programme, Coleraine Partnership was set up by Coleraine Borough Council in 2009 to oversee the development and delivery of the local Neighbourhood Renewal Action Plan. The Partnership currently comprises 25 members which include representatives from local communities, voluntary organisations, elected representatives, private sector and local statutory organisations. It currently meets on a bi-monthly basis and its administration services are provided through a Coordinator and administrator within Causeway Coast and Glens Borough Council.

The Partnership has established two Working Groups to assist them in the identification, development and where appropriate the delivery of projects which aim to address the Programmes 4 strategic objectives of community renewal, social renewal, economic renewal and physical renewal. The two Working Groups are representative of the two Neighbourhood Renewal Areas in Coleraine – Coleraine East and Coleraine Churchlands. Coleraine East covers the Ballysally and Millburn areas and Coleraine Churchlands covers the Heights and Killowen areas. Both Working Groups have approximately 38 members from the community, voluntary, statutory and private sectors and have representation from the local elected representatives for the area.

It should be noted that Coleraine Partnership and Working Groups have all signed up to and abide by the Neighbourhood Renewal Code of Practice and Guiding Principles and subsequent Subgroup Terms of Reference.



Coleraine Partnership Projects

The Neighbourhood Renewal Investment Fund supported 11 projects in the Coleraine Neighbourhood Renewal Areas in the 2018/2019 year as follows:-

Community Renewal

1. **West Bann Development – West Bann Regeneration Project**

This project aims to develop and co-ordinate a range of actions to meet the health, education and training needs of the local community. This is achieved through the provision of accredited training, an early years programme including crèches and the Sure Start developmental programme for 2-3 year olds, Good Morning Causeway and the provision of low cost business units and the facilities for the community to use.

2. **Causeway Coast & Glens Borough Council - Neighbourhood Renewal Partnership Technical Assistance (Coleraine)**

This project provides the management and administrative support for the Neighbourhood Renewal programme in the two Coleraine Neighbourhood Renewal Areas



3. Education Authority - Coleraine Education Community Project

This project aims to improve educational attainment, increase the numbers of pupils who continue in education, provide training programmes, involve families in parenting skills, parents and children in health programmes, ethnic minority families cultural awareness programmes, summer schemes, educate pupils on the impact of interface and community relational issues. Activities have included summer schemes, Lads and Dads clubs, Twilight Cookery classes and first aid courses.

4. Focus on Family – Millburn Community Development Worker

This project employs an outreach worker to work with individuals, families and the wider community empowering them to identify their needs, plan what they want to achieve and develop activities and services to improve their lives.



Memory Wall created by the Millburn Community in Calf Lane Cafe



Social Renewal – Education

5. Focus on Family - Ballysally Integrated Nurturing Project

This project includes partners from Focus on Family, Ballysally Primary School, Ballysally Presbyterian Church and Ballysally Nursery School. The project aims to develop a 'journey' from birth to adulthood by raising educational attainment, providing parenting support and improving the health and wellbeing and the general quality of life for participants through specialised nurturing provision provided by each partner for their specific target group.

6. Focus on Family - Skills Development & Education Programme

This project aims to deliver a wide range of skills-based and accredited training, careers, development, health and wellbeing programmes and collaborative events for the Ballysally and Millburn areas.



Focus on Family - Children playing



Focus on Family - Holistic Therapy



Focus on Family

7. West Bann Development - Churchlands Community Supporting Families Through Learning

This project aims to support family learning through a joined up approach. The partners include West Bann Development, Coleraine Sure Start Partnership, Kylemore Nursery, Killowen Primary School and St John's Primary School. The project aims to deliver effective initiatives to engage with residents in the NRA, to raise educational attainment through support, services and interventions to the whole family and to provide parenting support to promote healthy family relationships.

8. University of Ulster – I'M HAPPY (IMproving Hopes Aspirations, Potential and Prospects in the Youth)

This project aims to raise the aspirations of residents in the NRAs through computer-based activities such as app development and website development. The Ulster University works in partnership with Ballysally Youth and Community Centre, West Bann Development, Millburn Community Association, North Coast Integrated College, St Joseph's College, St John's and Killowen in the West of Coleraine and Millburn and Ballysally in East Coleraine. The achievements of participants are formally recognised through University module accreditation and there is further training available for people who wish to be COACHES.



I'M HAPPY - Working with schools



Graduating with I'M HAPPY



I'M HAPPY working with the community

Social Renewal - Health

9. Building Ballysally Together – Sally's Café

This project aims to address local resident social isolation, poor access to services, poor educational attainment and improve health and wellbeing of local residents by increasing use of healthier eating and cooking methods as well as open opportunities for volunteering, training and local employment.



Sally's Cafe



Sally's Cafe - Health Fair



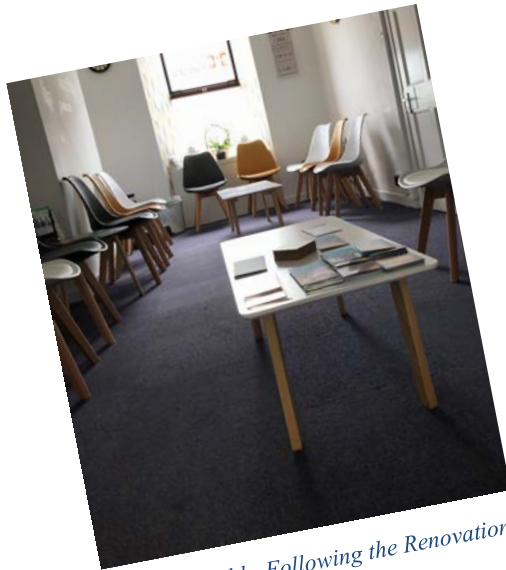
Sally's Cafe - Community event

10. West Bann Development - Health & Wellbeing Project

This project aims to enhance health and wellbeing, make lone pensioners and vulnerable persons less isolated and provide access to a podiatry treatment. It also aims to promote a better lifestyle and health options with reduced levels of stress for participants.

11. Ashes To Gold – Patchwork Connection Services

This project aims to empower participants to develop positive life change, to reduce the level of alcohol and drug-related harm for participants, their families and the wider community and to improve mental and emotional wellbeing. It does this through the provision of outreach services, therapeutic support programmes, drop-in services, life skills support programmes and capacity building.



Ashes to Gold - Following the Renovations



Ashes to Gold - Craft day



Ashes to Gold - Out in the community

Coleraine Partnership 2018/19 Expenditure (by Strategic Objective)

The following table details current projects funded via the Neighbourhood Renewal Investment fund. It also details the 2018-19 individual spend for each project, the total amount of expenditure by strategic objective and the overall 2018-19 total expenditure in the Coleraine Neighbourhood Renewal Area.

Programme/Project	CFF Funding Period	CFF Funding Amount (Project allocation – April 2018)	2018/19 Spend (as at 31/03/19)
COMMUNITY RENEWAL			
West Bann Development Regeneration Project	01 April 2018 – 31 March 2019	£56,971.46	£56,965.13
Causeway Coast and Glens Borough Council - Neighbourhood Renewal Technical Assistance (Coleraine and Limavady NR Partnerships)	01 April 2018 – 31 March 2019	£60,057.43	£51,152.83
Education Authority - Coleraine Education Community Project	01 April 2018 – 31 March 2019	£45,000.00	£41,034.05
Focus on Family – Millburn Community Development Worker	01 April 2018 – 31 March 2019	£34,571.94	£34,537.12
Total Community Renewal Expenditure		£196,600.83	£183,689.13



Programme/Project	CFF Funding Period	CFF Funding Amount (Project allocation – April 2018)	2018/19 Spend (as at 31/03/19)
SOCIAL RENEWAL – EDUCATION			
Focus on Family - Ballysally Integrated Nurturing Project	01 April 2018 – 31 March 2019	£148,711.34	£141,067.58
Focus on Family – Skills Development & Education Programme	01 April 2018 – 31 March 2019	£58,643.32	£57,760.18
West Bann Development - Churchlands Supporting Families Through Learning*	01 April 2018 – 31 March 2019	£72,003.62	£72,003.62
University of Ulster - IM HAPPY (IMproving Hopes Aspirations, Potential and Prospects in the Youth)*	01 April 2018 – 31 March 2019	£102,110.80	£64,973.80*
Total Social Renewal Education Expenditure		£381,469.08	£335,805.18

* May be subject to change pending final claims for payment being received



Programme/Project	CFF Funding Period	CFF Funding Amount (Project allocation – April 2018)	2018/19 Spend (as at 31/03/19)
SOCIAL RENEWAL – HEALTH			
Building Ballysally Together – Sally’s Café	01 April 2018 – 31 March 2019	£13,012.08	£13,012.08
West Bann Development - Health & Wellbeing Project	01 April 2018 – 31 March 2019	£2,800.00	£2,800.00
Ashes To Gold – Patchwork Connection Services	01 April 2018 – 31 March 2019	£34,655.76	£32,649.44
Total Social Renewal Health Expenditure		£50,467.84	£48,461.52

Neighbourhood Renewal Programme – Coleraine	CFF Funding Amount (Project allocation – April 2018)	2018/19 Spend (as at 31/03/19)
TOTALS	Total Allocation £628,537.75	Total Spend £567,955.83



ACHIEVEMENTS OF NEIGHBOURHOOD RENEWAL FUNDING IN 2018-19 YEAR

Community Output Measures* - from April 2018

PROJECT	CR1 – Number of people participating in community relations projects	CR2 – Number of people participating in community bonding projects	CR3 - number of people volunteering for community development activities	CR4 - Number of people engaged/involved in unpaid voluntary work	CR5 -Number of people receiving training in community development skills/capacity building	CR7 - Number of community/voluntary groups supported	CR9 - Number of people involved in projects that promote shared	CR10 - Number of people using existing community facilities	CR11 - Percentage of residents who say they are aware of community facilities/services in their area
West Bann Development – West Bann Regeneration Project	350								
West Bann Development - Health & Wellbeing Project (Podiatry)								99	
West Bann Development - Churchlands Supporting Families Through Learning							179	126	
Focus on Family – Skills Development & Education Programme		74	7		28	9			
Focus on Family – Millburn Community Development Worker		60	8		18	1			100%
Focus on Family - Ballysally Integrated Nurturing Project		490		26			10		
Education Authority - Coleraine Education Community Project		526							
Building Ballysally Together – Sally’s Cafe				22				13747	
Ashes To Gold – Patchwork Connection Services			16						
University of Ulster - IM HAPPY (IMproving Hopes Aspirations, Potential and Prospects in the Youth)		4							



Education Output Measures* from April 2018

PROJECT	SR(Ed) 1 - Number of childcare/nursery school places created/safeguarded	SR(Ed)2 - Number of pupils whose attendance is measurably enhanced/improved	SR(Ed) 3 - Number of pupils whose attainment is measurably enhanced/improved	SR(Ed) 4 - Number of pupils whose behaviour is measurably enhanced/improved	SR(Ed) 5 - Number of people engaged in parenting skills development programmes	SR(Ed) 6 - Number of pupils directly benefiting from the project	SR(Ed) 7 - Number of pupils whose attainment is measurably enhanced/improved	SR(Ed)14 - Number of young people directly benefiting from the project	SR(Ed) 22 - Increased number of young people and adults taking part on regular physical activity	SR(Ed)24 - Number of residents in an area who obtain a (ICT-related) qualification on completion of formal training	SR (ED) 25 Number of pupils directly benefiting from the project
West Bann Development – West Bann Regeneration Project	12										
West Bann Development - Churchlands Supporting Families Through Learning		66	89	34	98	118					
Focus on Family – Skills Development & Education Programme	252										
Focus on Family – Millburn Community Development Worker					38						
Focus on Family - Ballysally Integrated Nurturing Project		20		8	129	54	145				
Education Authority - Coleraine Education Community Project		104	192	52	423	822			310		
University of Ulster - IM HAPPY (IMproving Hopes Aspirations, Potential and Prospects in the Youth)								15		155	677

Education Output Measures* from April 2018 (cont'd)

PROJECT	SR(Ed) 28 – Number of people undertaking accredited courses and qualifications completed	SR(Ed) 31 – Number of school partnerships delivering shared extra-curricular activities	SR (Ed) 34 - To have engaged with 1 shared teacher engaged to work in more than one school.
West Bann Development - Churchlands Supporting Families Through Learning			1
Focus on Family - Ballysally Integrated Nurturing Project	5	256	

SR(ED)1 – Early Years **SR(ED)2-5** – Tackling Barriers to Learning **SR(ED)6-7** – Improving attainment in Literacy and Numeracy
SR(ED)8-9 Closing the Performance Gap **SR(ED)10-11** – Tackling barriers to Learning Special Educational Needs **SR(ED)12-13** – Tackling barriers to learning Emotional health and wellbeing
SR(ED)14-17 – Youth Services **SR(ED)18-22** – Extended Schools **SR(ED)23-25** – ICT
SR(ED)26-28 – Tackling Barriers to Learning: Extended Schools **SR(ED)29-35** – Shared Education



Social Renewal - Health Output Measures* from April 2018

PROJECT	SR(H)1 - Number of people benefiting from Healthy Lifestyle Projects / Number of treatments provided	SR(H)2 - Number of people attending Health Education/Awareness initiatives	SR(H)3 - Number of people accessing intervention/treatment	SR(H)4 - Number of health education awareness initiatives provided/delivered
West Bann Development – West Bann Regeneration Project		638		10
West Bann Development - Health & Wellbeing Project (Podiatry)	99		99	
Focus on Family – Skills Development & Education Programme			106	
Focus on Family – Millburn Community Development Worker	107	91		
Focus on Family - Ballysally Integrated Nurturing Project	307	90		
Ashes To Gold – Patchwork Connection Services		29	45	6



Social Renewal - Crime Output Measures* from April 2018

PROJECT	SR(C)2 - Number of community safety initiatives implemented	SR(C)3 - Number of people participating/attending community safety initiatives	SR(C)4 – Number of crime prevention initiatives implemented	SR(C)6 - Number of young people benefiting from youth inclusion/diversionary projects
Focus on Family – Millburn Community Development Worker	45	44		
Focus on Family - Ballysally Integrated Nurturing Project				15
Ashes To Gold – Patchwork Connection Services			6	



Economic Renewal Output Measures* from April 2018

PROJECT	ER2 - Number of residents going into employment	ER4 - Number of people receiving job specific training	ER6 - Number of people receiving non job specific training e.g. first aid	ER9 - Number of new/existing businesses requiring/receiving advice/support	ER11 - Number of Social economy enterprises created/supported	ER13 – Number of new/existing childcare places supported to facilitate training and or employment	ER 14 – Number of people attaining a formal qualification from participation in Adult education	ER 15 – Number of FTE jobs safeguarded
West Bann Development Regeneration Project		2	302	2		89	74	2
West Bann Development - Churchlands Supporting Families Through Learning		9						
Focus on Family – Skills Development & Education Programme	7				1		48	1.4
Focus On Families – Millburn Community Development Worker		48					1	
Education Authority - Coleraine Education Community Project			20					
Building Ballysally Together – Sally's Café								2
Ashes To Gold – Patchwork Connection Services		8						
University of Ulster - IM HAPPY (IMproving Hopes Aspirations, Potential and Prospects in the Youth)		147					32	
Focus on Family - Ballysally Integrated Nurturing Project								2 F/T 9 P/T

Coleraine Partnership Conclusion

In the 2018-19 financial year, Coleraine Partnership total overall spend was £567,955.83 (End March 19). This can be further broken down into Strategic Objective spend as follows:-

Community Renewal £183,689.13

Social Renewal £384,267.70

Breakdown of actual achievements for total expenditure

At the beginning of the 2018-19, Coleraine Neighbourhood Renewal Partnership agreed to continue with the previously identified key priorities for the two Neighbourhood Renewal Areas for the forthcoming year: Health, Youth and Family, Economic development and Community capacity.

The Coleraine Neighbourhood Renewal Partnership has been instrumental in securing £628,537.75 of funding from the Department for Communities to enable the 11 projects to be run in the two Neighbourhood Renewal Areas in 2018-2019. Some of the headline achievements for the projects for the year are as follows:

- 155 residents obtained an ICT related qualification
- 1154 people participated in community bonding projects
- 677 pupils benefitted directly from the programmes
- 848 people participated in health initiatives, and
- 13972 people using existing community facilities

The partnership will continue to work for the benefit of the residents in the two Neighbourhood Renewal Areas for the remainder of the programme and will strive to secure further funding to address the needs identified locally.



Some more key successes for the area include:

- **Ballysally Integrated Nurturing Programme**

Ballysally Integrated Nurturing Project held their Nurture Celebration on the 15th June, a fantastic afternoon despite the splashes of rain! Great partnership working with Building Ballysally Together, Surestart, the I'M HAPPY project, PSNI, Iconic Street Dance, Focus on Family, Ballysally Presbyterian Church and Ballysally Nursery for food, fun and activities. Great fun was had by all and the event demonstrated what a great place Ballysally is!

- **Building Ballysally Together – Sally's Café**

A fantastic turn out of over 450 people to the annual Ballysally health fair. Building Ballysally Together and Ballysally Primary School work together in partnership to provide this fantastic health initiative, bringing together a variety of information stands, pharmacists, health checks, and health advice. According to the NIMDM Ballysally is within the top 25% most deprived areas in Northern Ireland, in terms of health and well-being. Therefore, this initiative was geared towards improving the health and well-being of the local residents, improving knowledge around keeping healthy, targeting both physical and mental health.

- **Millburn Community Association**

Held a joint event with Allen Parton from Hounds for Heroes, his dog EJ, Millburn Primary School P7's and the Coleraine Armed Forces Veterans Breakfast Club. Allen delivered an inspirational talk explaining the work that his charity does in supplying injured veterans and emergency service personnel with support dogs to help them live a better life.



Millburn Community Association - with Millburn P.S. P7's

- **I'M HAPPY**

Another lovely graduation at Ulster University! Congratulations to Cole, Daniel, James, and Robert for graduating with a Certificate in Personal and Professional development through the IM HAPPY project. Very well deserved after all of your hard work and dedication!



IM HAPPY

Annual Review of Action Plan - The Coleraine Neighbourhood Renewal Partnership Board now have the Action Plan as an Agenda Item for each discussed at each Partnership Meeting.

* All photos within this report have been supplied by the groups, accessed from the Neighbourhood Exchange E-zine or other public domains.



**Community Empowerment Division North
Department for Communities
County Hall
182 Galgorm Road
Ballymena
BT42 1QG**





Available in alternative formats

© Crown Copyright 2020