



# DfC

Department  
for Communities

[www.communities-ni.gov.uk](http://www.communities-ni.gov.uk)



Northern Ireland  
Statistics and Research Agency

## Personal Independence Payment (PIP) Experimental Statistics (August 2017)

This summary contains experimental statistics on Personal Independence Payment (PIP) in Northern Ireland. Experimental statistics are new official statistics undergoing evaluation. They are published in order to involve users and stakeholders in their development and as a means to build in quality at an early stage.

From 20th June 2016, DfC began to replace Disability Living Allowance (DLA) for working age people with PIP. PIP helps with some of the extra costs caused by long term disability, ill health or terminal ill health.

Statistics on PIP registrations, clearances, awards, numbers of claims in payment and mandatory reconsiderations for both new claims and claims made by those with an existing claim for Disability Living Allowance (known as reassessments) are included.

### Registrations

# 67,000

(total figures from June 2016 to August 2017)

### Clearances

# 49,430

(total figures from June 2016 to August 2017)

### In Payment

# 28,250

(total claims in payment at August 2017)

### Award Rate

(New Claims)

# 42%

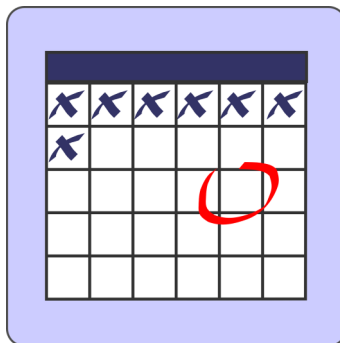
(rate for new claims from June 2016 to August 2017 based on initial decision.)

### Award Rate

(DLA Reassessment)

# 66%

(rate for DLA Reassessment claims from June 2016 to August 2017 based on initial decision.)



Average (median)  
clearance time of  
**13 weeks**

(total figures from June 2016 to August 2017  
from registration to clearance)



**38%** of awards have  
Psychiatric Disorders as the  
main disabling condition

## Contents

Registrations, Clearances and Awards	3
Average Clearance Periods	4
Characteristics of Claims in Payment	5
DLA Reassessed Claims	6
Mandatory Reconsiderations	7
About These Statistics	8

Disability Benefits and Reform Team

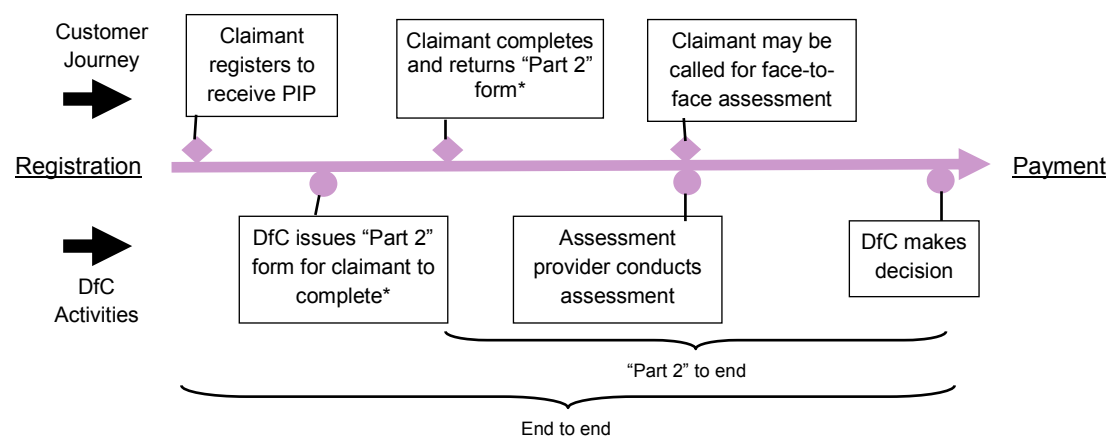
[asu@communities-ni.gov.uk](mailto:asu@communities-ni.gov.uk)

Published: 29th November 2017

Next edition: 28th February 2018

## PIP Claims Process

This release summarises the published official statistics relating to PIP. The statistics cover the PIP customer journey from registration through to payment. Key information is included on average clearance and award rates, on the nature of the award and characteristics of claims in payment. More detailed statistics are available as supplementary tables on the DfC website at <https://www.communities-ni.gov.uk/articles/personal-independence-payment-statistics>.



\*The "Part 2" form is referred to in the application process as the "How your disability affects you" form.

ASU measure the full end-to-end process (from claim registration to decision/payment) and the Assessment Provider (AP) referral to end process (which excludes the time the claim is with the claimant). For more details see the "About these statistics" section.

### Glossary of Terms

**Registration** - Claimant registers an application to claim PIP.

**Clearance** - DfC decision maker has determined whether the claimant should or should not be awarded PIP.

**Clearance Time** - The time between registration or referral to the Assessment Provider (AP) and clearance of the case.

**Awards** - Claimant has been awarded PIP.

**New Claims** - A claim to PIP which does not originate from an existing DLA claim.

**Reassessment** - DLA claim that has been reassessed for PIP, as opposed to a new claim.

**Normal Rules** - Claims not being processed under 'Special Rules for Terminally Ill (SRTI)'.

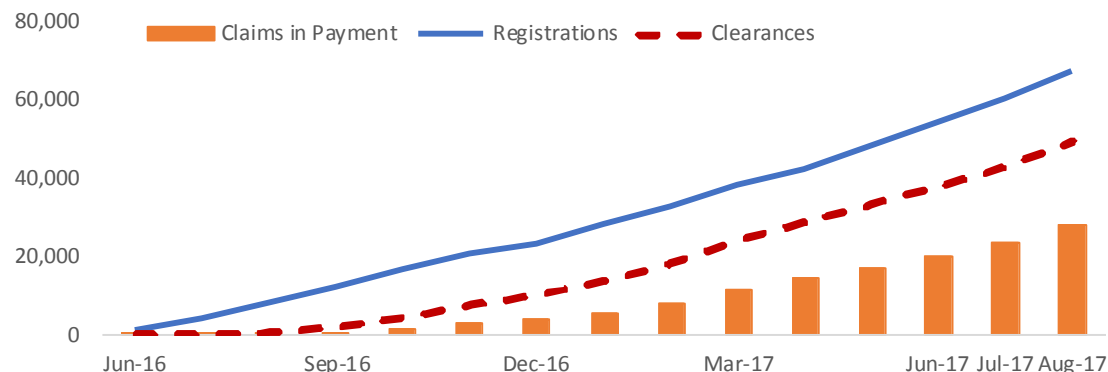
**Mandatory Reconsiderations** - Claimant wishes to dispute a decision made on their claim and requests DfC to reconsider the decision.

# Registrations, Clearances and Awards

67,000 PIP Claims registered since June 2016

Clearances and awards statistics below **do not** include awards given as a result of mandatory reconsiderations or appeals. Claims in payment do include those who have been awarded PIP after a mandatory reconsideration or appeal.

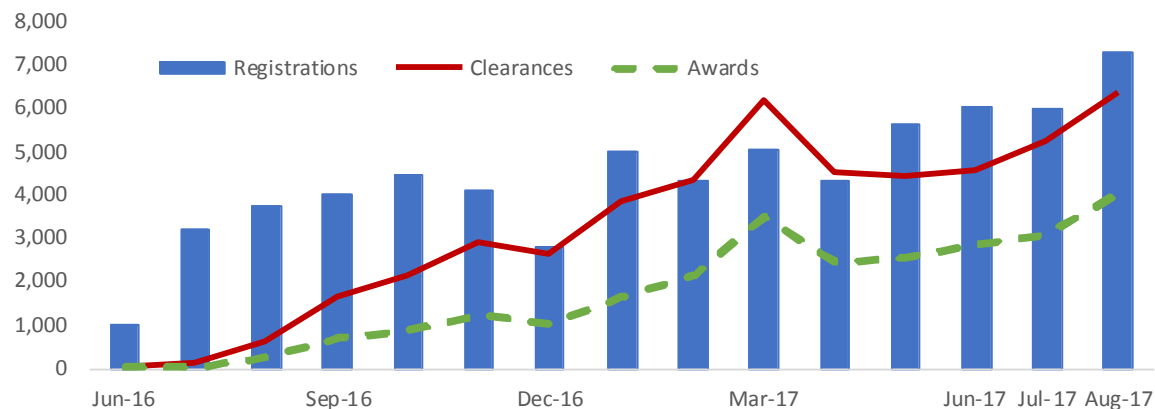
## Cumulative Registrations, Clearances and Claims in Payment



By the end of August 2017, there were 67,000 PIP claims registered. Of these, 49,430 had been cleared including 670 (1%) 'Special Rules for the Terminally Ill' (SRTI) claims and 25,580 (52%) reassessed DLA claims.

**28,250 Claims in Payment at August 2017**  
**18,000 (64%) Reassessed DLA Claims**

## Monthly Registrations, Clearances and Awards



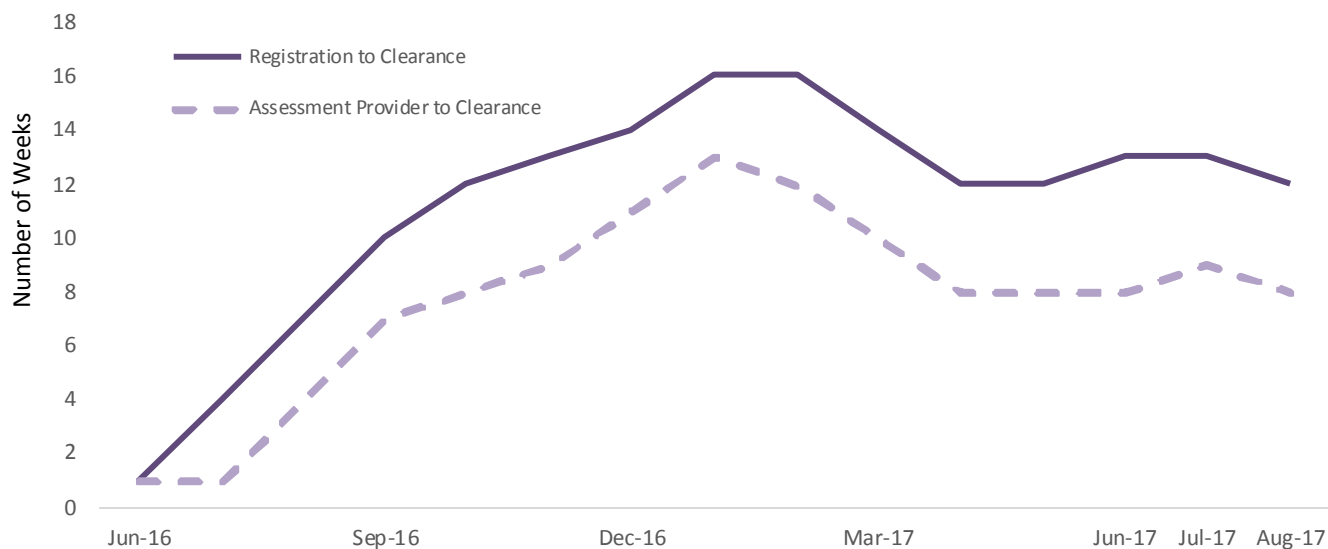
**Award rates (excluding withdrawn claims):**  
**New Claims - 42%**  
**DLA Reassessment Claims - 66%**  
**Overall award rate - 54%**

# Average Clearance Periods

Overall average clearance period of 13 weeks since June 2016

Average clearance periods are given in weeks and calculated from date of claim being registered on the PIP computer system until a decision is cleared. Also given below are the average clearance periods for the time taken from referral to assessment provider to a decision being cleared.

## Average (median) Clearance Period (weeks), Claims Cleared by Month



### Average Clearance Periods (registration to clearance):

- June 2016 to August 2017 - **13** weeks
- At August 2017 - **12** weeks

### Average Clearance Periods (assessment provider to clearance):

- June 2016 to August 2017 - **9** weeks
- At August 2017 - **8** weeks

### Average Clearance Periods (registration to clearance; from June 2016):

- New Claims - **12** weeks
- DLA Reassessed Claims - **13** weeks

# Characteristics of Claims in Payment

Currently 28,250 PIP claims in payment

## Claims in Payment by Award Level

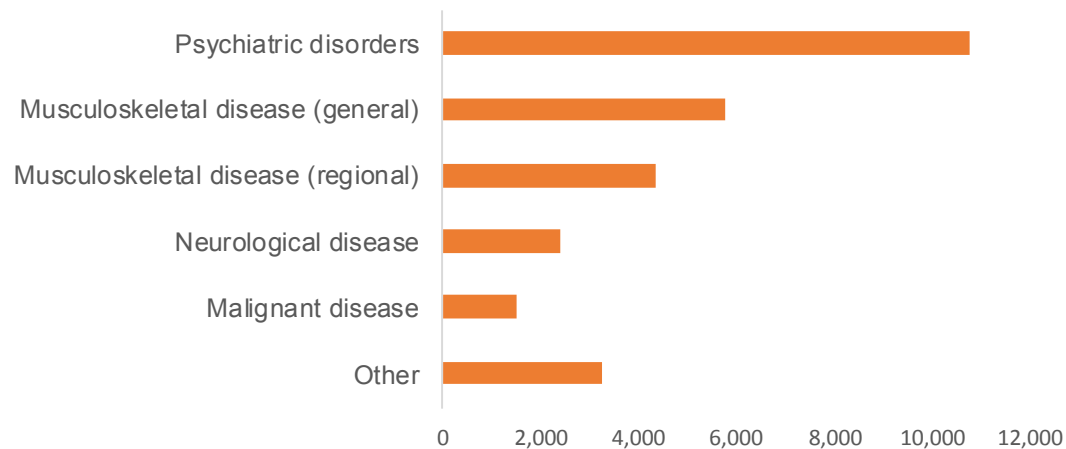
### MOBILITY

		Standard	Enhanced	No Award
DAILY LIVING	Standard	4,000 (14%)	5,480 (19%)	4,370 (15%)
	Enhanced	1,540 (5%)	8,460 (30%)	3,500 (12%)
	No Award	540 (2%)	340 (1%)	

**30%** of claims in payment are awarded the enhanced rate for both components.

**27%** of claims in payment are in receipt of the Daily Living component with no entitlement to the Mobility component.

## Claims in Payment by Main Disabling Condition



**38% (10,780)** of all claims in payment have a Psychiatric Disorder as the main disabling condition.

# DLA Reassessed Claims

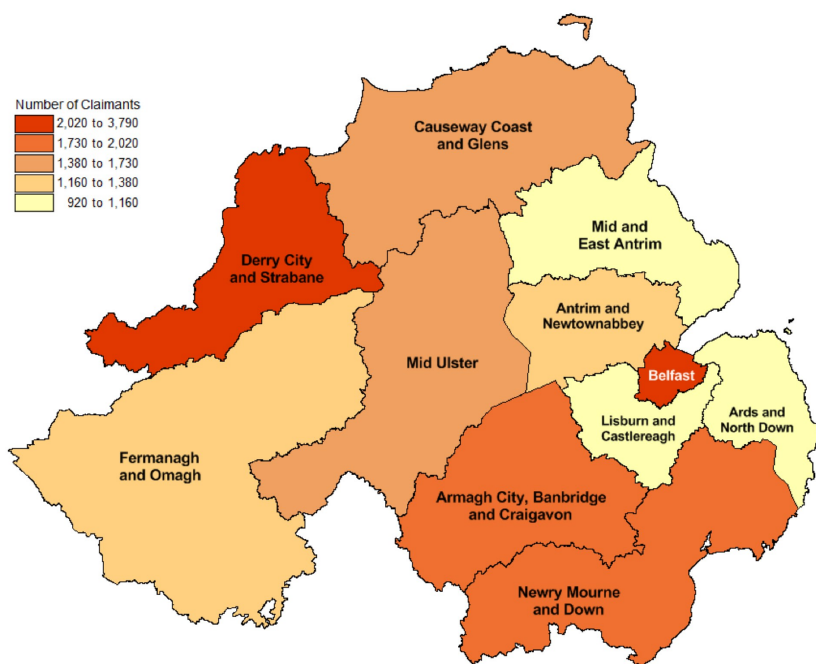
Currently 18,000 PIP claims in payment from DLA Reassessment

## DLA Reassessment Roll Out

The main reassessment of DLA claimants began in December 2016 and is expected to end in April 2019.

At the end of August 2017, 18,000 claims in payment were reassessment claims from DLA (64% of all claims in payment). There have been 25,580 DLA reassessment claims cleared as at end August 2017.

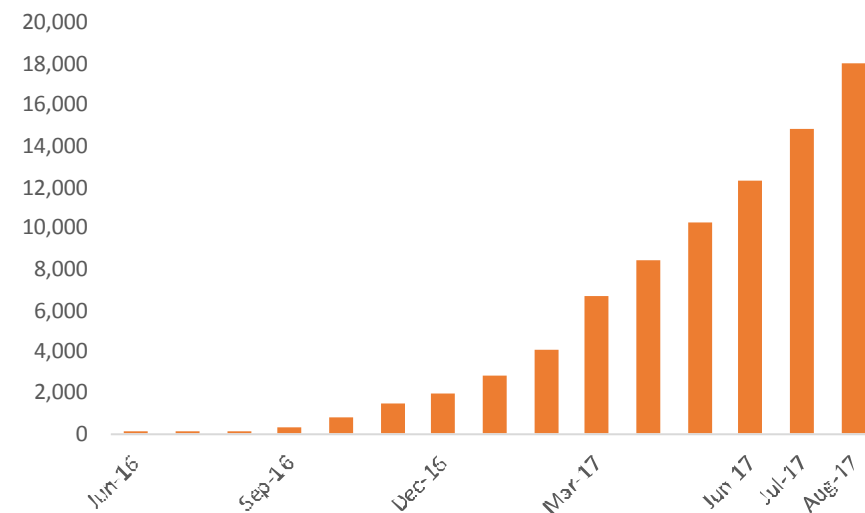
## People with Reassessed DLA Claims in receipt of PIP (by Local Government District (LGD))



Belfast LGD has the highest number of DLA reassessed claims in receipt of PIP.

**66%** of DLA Reassessed claims are granted an award of PIP (based on initial decision).

## Total DLA Reassessed Claims in Payment



Of the 18,000 reassessed claims in payment at August 2017:

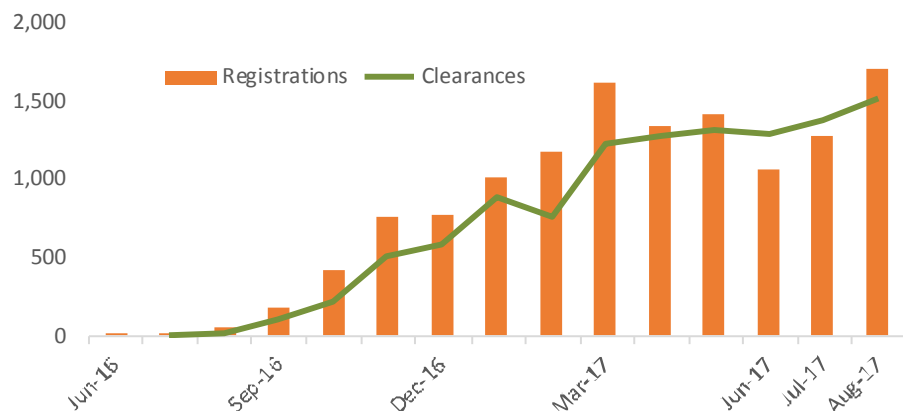
- 13,170 (73%) received an award at the enhanced rate.
- 6,260 (35%) received the highest level of award i.e. both enhanced rate for daily living and enhanced rate for mobility.

(These figures include case outcomes which may have been changed as a result of mandatory reconsideration or appeal.)

# Mandatory Reconsiderations

26% of PIP decisions to date have resulted in a request for reconsideration

## Reconsiderations by Month: Registrations and Clearances



Claimants who wish to dispute their decision on their PIP claim can ask DfC to reconsider the decision. This is a 'Mandatory Reconsideration' (MR). Its purpose is to consider the grounds for the dispute and complete a review of the initial decision. MRs can arise for various reasons such as omitting to tell DfC about relevant evidence during the initial decision making process or not returning forms required as part of the claim.

The number of MRs requested tends to move in line with the number of claims cleared.

By the end of August 2017, there were 12,780 MRs registered, with 7,550 for DLA reassessed claims and 5,220 for new claims.

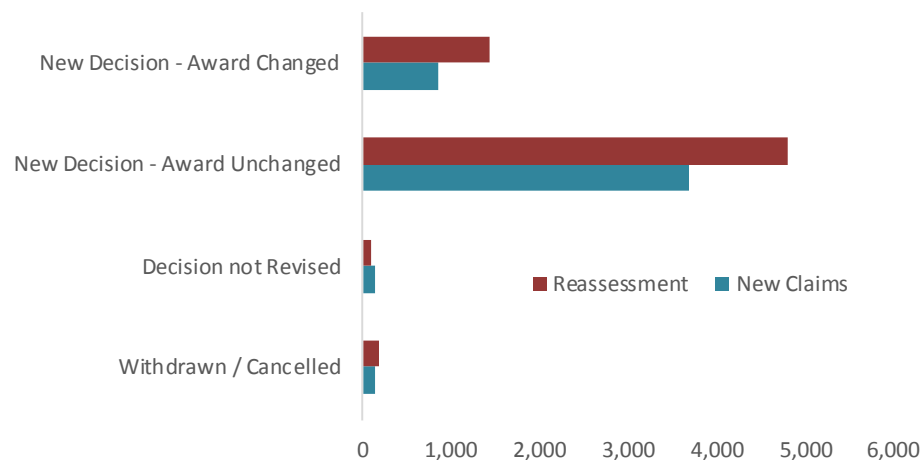
A total of 11,040 MRs have been cleared\* by end August 2017. Of these, 4,690(42%) were new claims and 6,360 (58%) DLA Reassessed claims.

A MR must be completed before an appeal is made and lodged with The Appeals Service.

\*excluding withdrawn / cancelled MRs

## The majority of reconsiderations result in no change in the award.

### Reconsiderations Outcome for New Claims and Reassessed Claims



By the end of August 2017, **82%** of new claims and **77%** of reassessed DLA reconsiderations resulted in no change to the award.

**New Decision - Award Changed;** The Reconsideration instigated by the Claimant or Department has been completed and a conclusion is recorded which indicates that there has been a new decision issued and the award has been changed.

**New Decision - Award Unchanged;** The Reconsideration instigated by the Claimant or Department has been completed and a conclusion is recorded which indicates that there has been a new decision issued but the award remains unchanged.

## About These Statistics

This summary contains experimental statistics on PIP registrations, clearances, awards, numbers of claims in payment and mandatory reconsiderations for both new claims and claims made by those with an existing claim for Disability Living Allowance (DLA) (known as Reassessments).

Data is sourced from the PIP Computer System and represents a 100% population of PIP claimants with a postcode in Northern Ireland at the associated dates. All figures are rounded to the nearest 10 and as a result may not sum to stated totals.

'Monthly claims in payment' refers to the number of PIP claims in payment on the last day of the month. Any figures relating to claims in payment will include claims which may have been changed as a result of a mandatory reconsideration or appeal. Figures relating to registrations, clearances and award rates are based on the initial decision and **do not** take account of any awards changed as a result of mandatory reconsiderations or appeal.

### ***Data Quality Statement***

These statistics are in an experimental stage and as such are subject to retrospective revision in any future releases.

The methodology for gathering these statistics is still in development and is also in the process of being quality assured. The methodology may change, leading to a revision of the figures contained within.

## PIP Operational Roll Out

PIP was introduced in Northern Ireland on 20th June 2016 for all new claims and where the award period for DLA had come to an end.

From December 2016, the main reassessment of all existing working age DLA claims began with claimants selected at random. This process is expected to be completed by April 2019.

## Further Information & Feedback

For more information on PIP statistics, including detailed tables, please visit:

<https://www.communities-ni.gov.uk/articles/personal-independence-payment-statistics>

Alternatively, contact DfC Analytical Services Unit at: [asu@communities-ni.gov.uk](mailto:asu@communities-ni.gov.uk)

We would appreciate if you completed a short questionnaire to give us your views on the publication.

An online version of this questionnaire is available at the following link:

[http://www.smartsurvey.co.uk/s/PIP\\_Stats\\_User\\_Survey/](http://www.smartsurvey.co.uk/s/PIP_Stats_User_Survey/)

For more information on PIP in general, please visit:

<https://www.nidirect.gov.uk/articles/personal-independence-payment>