

Northern Ireland Housing Bulletin

1st July – 30th September 2015

Published 9th February 2016



Introduction

The Northern Ireland Housing Bulletin is produced each quarter by the Analytical Services Unit of the Department for Social Development. The Bulletin contains information on starts and completions, homelessness, the Residential Property Price Index and new dwelling sales and prices.

Key Facts include:

- The total number of new dwelling starts in Northern Ireland recorded by Building Control for July – September 2015 was 2,013, an increase of 22% on the same quarter in 2014. The total number of new dwelling completions recorded by Building Control for July – September 2015 was 1,351, a decline of 8% on the same quarter in 2014.
- During the first three quarters of 2015/16, there were a total of 306 Social Housing Development Programme (SHDP) new social housing dwelling starts and 711 SHDP new social housing dwelling completions. The SHDP figures are sourced from the Northern Ireland Housing Executive, and not Building Control. More detail on the definitions of starts and completions used by the two organisations is available in Appendix 1.
- In total, 4,856 households presented as homeless to the Northern Ireland Housing Executive during July - September 2015, an increase of 80 (2%) from the previous quarter. The most common reason reported by those presenting as homeless was that their accommodation was not reasonable (999). This was followed by those who reported a sharing breakdown or family dispute (991).
- The number of households accepted by the Northern Ireland Housing Executive as full duty applicants for the quarter July - September 2015 was 2,766, an increase of 289 (12)% from the previous quarter. The most common reasons reported by full duty applicants for their current situation was that their accommodation was not reasonable (31%) or they were experiencing a sharing breakdown or family dispute (18%). Of those households accepted as full duty applicants during the quarter, 336 were discharged. A full duty applicant is an applicant considered by the Housing Executive to be eligible, homeless (threatened with homelessness), in priority need and unintentionally homeless, to whom the Housing Executive owes full housing duty.
- The Northern Ireland Residential Property Price Index in Quarter 3 (July – September) 2015 stands at 105, 7% higher than in Quarter 3 2014.
- Between Quarter 2 (April – June) and Quarter 3 (July – September) 2015, the Residential Property Price Index increased by 3%.
- During the quarter ending June 2015, 280 (revised figures) new National House Building Council (NHBC) registered dwellings were sold, a decrease of 16% on the same period in 2014.
- The average price of NHBC-registered new dwellings for the quarter ending June 2015 was £158,400, a decrease of 6% on the previous quarter (£167,700).

INTRODUCTION

Symbols and Conventions

The following symbols are used throughout the publication:

- .. Not available
- * Suppressed
- (P) Provisional
- (R) Revised
- N/A Not Applicable

Review of New Dwelling Starts and Completions

Following a review of new dwelling starts and completions data in 2014/15, and subsequent user consultation carried out in March 2015, the information included in section 1 of the bulletin was revised in the April - June 2015 edition. Further information on the changes is included in Appendix 2.

Housing Publications

If you have any queries or comments relating to this issue of the Housing Bulletin, please contact:

Analytical Services Unit
Department for Social Development
Level 1, James House
2-4 Cromac Avenue
Gasworks Business Park
Ormeau Road
Belfast
BT7 2JA

Telephone (028) 9081 9957 e-mail asu@dsdni.gov.uk

Website <https://www.dsdni.gov.uk/topics/dsd-statistics-and-research>

Quarterly Housing Bulletins, along with the more comprehensive annual 'Housing Statistics' reports can be found at: <https://www.dsdni.gov.uk/topics/dsd-statistics-and-research-housing/housing-statistics>

If you wish to receive notification of the publications by email, please contact the above address.

Comprehensive government statistics on Northern Ireland can be found on the Northern Ireland Statistics and Research Agency website (www.nisra.gov.uk).

The next edition of this bulletin will be published in April/May 2016.

Analytical Services Unit (ASU), Department for Social Development receives data for the Housing Bulletin from a number of data providers. ASU carries out a number of validation checks to quality assure all data received however responsibility for accuracy of the data supplied lies primarily with the source.

INTRODUCTION

The Northern Ireland Housing Bulletin was assessed by the United Kingdom Statistics Authority against the Code of Practice for Official Statistics in 2012-2013.

The United Kingdom Statistics Authority has designated these statistics as National Statistics, in accordance with the Statistics and Registration Service Act 2007 and signifying compliance with the Code of Practice for Official Statistics.

Designation can be broadly interpreted to mean that the statistics:

- meet identified user needs;
- are well explained and readily accessible;
- are produced according to sound methods; and
- are managed impartially and objectively in the public interest.

Once statistics have been designated as National Statistics it is a statutory requirement that the Code of Practice shall continue to be observed.

Contents

Section 1: Supply

- 1.1 Building Control New Dwelling Starts By Development Type
- 1.2 Building Control New Dwelling Completions By Development Type
- 1.3 Social Housing Development Programme (SHDP) New Social Housing Dwelling Starts
- 1.4 Social Housing Development Programme (SHDP) New Social Housing Dwelling Completions

Section 2: Social Renting Demand

- 2.1 Households Presenting As Homeless By Reason
- 2.2 Households Presenting As Homeless By Household Type
- 2.3 Homeless Households Accepted As Full Duty Applicants By Reason

Section 3: Owner Occupied Housing Demand

- 3.1 Northern Ireland Residential Property Price Index
- 3.2 Number of Verified Residential Property Sales in Northern Ireland
- 3.3 Northern Ireland Residential Property Price Index by Property Type
- 3.4 Northern Ireland New Dwelling Sales and Prices
- 3.5 Northern Ireland New Dwelling Sales and Prices by Local Government District

Appendices

- 1. Data Sources
- 2. Changes to 'Section 1 – Supply' Following Review in 2014/15

SECTION 1 – SUPPLY

The presentation of Starts and Completions data included in this section of the bulletin was revised in the April – June 2015 edition. A review of DSD reporting on starts and completions data carried out in 2014/15 concluded that an adjustment factor previously applied to completions data was no longer required. This is due to improvement over the years in terms of data quality as well as the availability of a longer time series where completions eventually make their way into the series. Further details of the review are included in Appendix 2 and on the following webpage:

<https://www.dsdni.gov.uk/publications/review-new-dwelling-starts-and-completions>

The bulletin now includes starts and completions data sourced from Building Control via Land and Property Services (LPS) as well as starts and completions data sourced from the Northern Ireland Housing Executive (NIHE) for the Social Housing Development Program. Information on the way starts and completions data are recorded by LPS (tables 1.1 and 1.2) and the NIHE (tables 1.3 and 1.4) is available in Appendix 1.

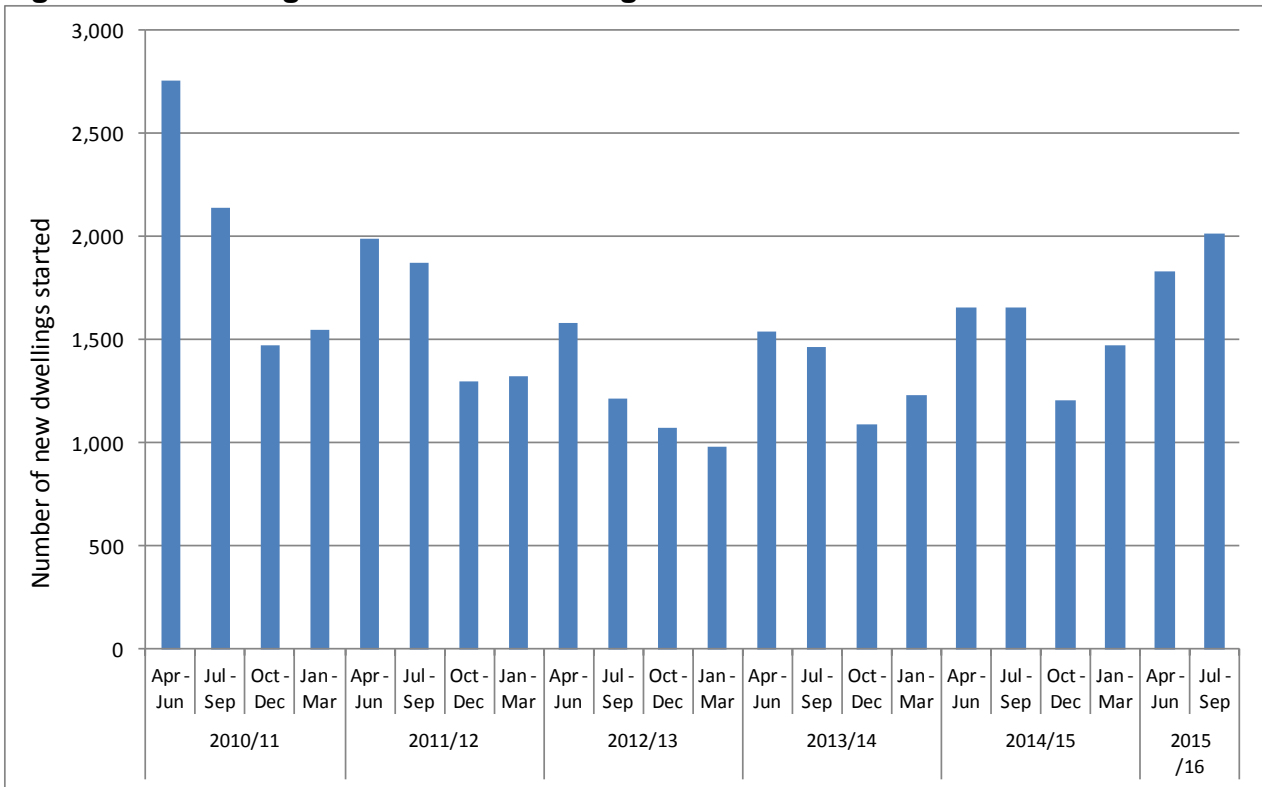
- 1.1 The total number of new dwelling starts in Northern Ireland recorded by Building Control for July - September 2015 was 2,013, an increase of 22% on the same quarter in 2014, and the highest number of new starts in any quarter since July – September 2010.
- 1.2 The number of private owner/speculative development new dwelling starts recorded by Building Control for July - September 2015 was 1,559, an increase of 7% on the same quarter in 2014. The corresponding number recorded for social housing development new dwelling starts was 454, over double the number recorded for the same quarter in 2014.
- 1.3 The total number of new dwelling completions in Northern Ireland recorded by Building Control for July - September 2015 was 1,351, a decline of 8% on the same quarter in 2014.
- 1.4 The number of private owner/speculative development new dwelling completions recorded by Building Control for July - September 2015 was 1,201, an increase of 6% on the same quarter in 2014. The corresponding number recorded for social housing development new dwelling completions was 150, a decrease of 55% on the same quarter in 2014.
- 1.5 There were a total of 306 Social Housing Development Programme (SHDP) new social housing dwelling starts in the first three quarters (Apr-Dec) of 2015/16. All of the new starts were Self-Contained dwellings.
- 1.6 The majority of SHDP new social housing dwelling starts in the first three quarters of 2015/16 were New Build (59%). A further 13% were Off-the-Shelf, 22% were Existing Satisfactory Purchase, and 7% were Rehabilitation.
- 1.7 There were a total of 711 Social Housing Development Programme (SHDP) new social housing dwelling completions in the first three quarters of 2015/16. Of these, 94% were Self-Contained and the remaining 6% were for Shared accommodation.

SECTION 1 – SUPPLY

- 1.8 The majority of SHDP new social housing dwelling completions in the first three quarters of 2015/16 were New Build (62%). A further 21% were Off-the-Shelf, 9% were Existing Satisfactory Purchase, 6% were Rehabilitation, and 2% were Re-improvement.

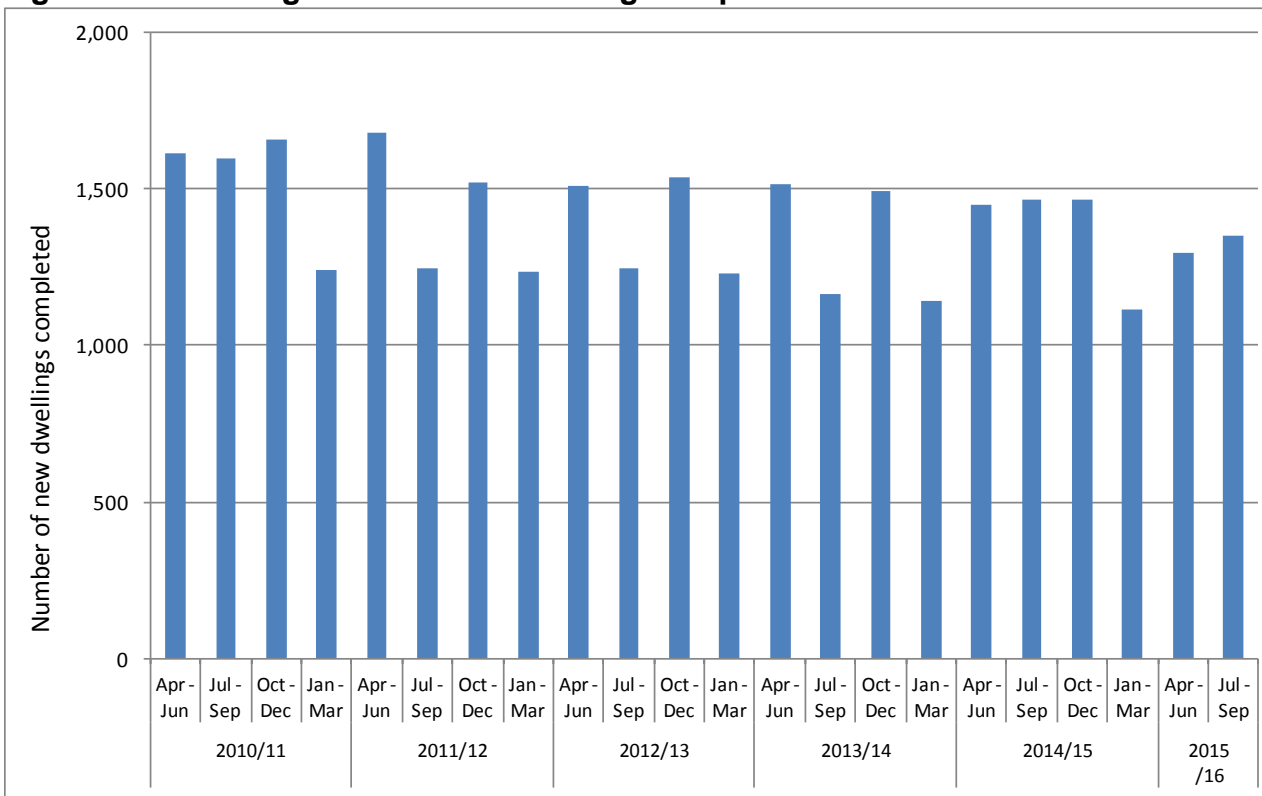
SECTION 1 – SUPPLY

Figure 1.1: Building Control New Dwelling Starts Q1 2010/11 – Q2 2015/16



Source: Land and Property Services
<https://www.dfpni.gov.uk/articles/new-dwelling-statistics>

Figure 1.2: Building Control New Dwelling Completions Q1 2010/11 – Q2 2015/16



Source: Land and Property Services
<https://www.dfpni.gov.uk/articles/new-dwelling-statistics>

SECTION 1 – SUPPLY

Table 1.1 Building Control New Dwelling Starts by development type^{1,2,3,4}

Quarter / Year	Development Type		Total New Dwelling Starts
	Private owner/ speculative development	Social Housing Development	
Apr - Jun 2010	2,287	468	2,755
Jul - Sep 2010	1,833	309	2,142
Oct - Dec 2010	1,352	120	1,472
Jan - Mar 2011	1,409	141	1,550
2010-11	6,881	1,038	7,919
Apr - Jun 2011	1,478	515	1,993
Jul - Sep 2011	1,452	418	1,870
Oct - Dec 2011	1,043	255	1,298
Jan - Mar 2012	1,112	214	1,326
2011-12	5,085	1,402	6,487
Apr - Jun 2012	1,175	406	1,581
Jul - Sep 2012	998	217	1,215
Oct - Dec 2012	948	121	1,069
Jan - Mar 2013	876	102	978
2012-13	3,997	846	4,843
Apr - Jun 2013	1,182	357	1,539
Jul - Sep 2013	1,168	294	1,462
Oct - Dec 2013	928	158	1,086
Jan - Mar 2014	1,137	93	1,230
2013-14	4,415	902	5,317
Apr - Jun 2014	1,451	207	1,658
Jul - Sep 2014	1,454	202	1,656
Oct - Dec 2014	1,111	93	1,204
Jan - Mar 2015	1,236	240	1,476
2014-15	5,252	742	5,994
Apr - Jun 2015	1,407	421	1,828
Jul - Sep 2015	1,559	454	2,013

Source: Land and Property Services

<https://www.dfpni.gov.uk/articles/new-dwelling-statistics>

1. The date of a new dwelling start is the date on which the first building control inspection takes place.
2. The figures only include applications for new dwellings received by Building Control in NI.
3. The figures include domestic apartments and dwellings as defined by Building Control purpose group.
4. Figures will be revised on an annual basis to capture Building Control applications received outside of the quarter.

[Download Table](#)

SECTION 1 – SUPPLY

Table 1.2 Building Control New Dwelling Completions by development type^{1,2,3,4}

Quarter / Year	Development Type		
	Private owner/ speculative development	Social Housing Development	Total New Dwelling Completions
Apr - Jun 2010	1,428	189	1,617
Jul - Sep 2010	1,440	158	1,598
Oct - Dec 2010	1,483	175	1,658
Jan - Mar 2011	1,116	128	1,244
2010-11	5,467	650	6,117
Apr - Jun 2011	1,473	209	1,682
Jul - Sep 2011	1,134	113	1,247
Oct - Dec 2011	1,211	310	1,521
Jan - Mar 2012	1,060	177	1,237
2011-12	4,878	809	5,687
Apr - Jun 2012	1,109	401	1,510
Jul - Sep 2012	1,021	225	1,246
Oct - Dec 2012	1,065	474	1,539
Jan - Mar 2013	988	245	1,233
2012-13	4,183	1,345	5,528
Apr - Jun 2013	1,097	420	1,517
Jul - Sep 2013	990	172	1,162
Oct - Dec 2013	1,176	317	1,493
Jan - Mar 2014	1,032	112	1,144
2013-14	4,295	1,021	5,316
Apr - Jun 2014	1,143	308	1,451
Jul - Sep 2014	1,134	334	1,468
Oct - Dec 2014	1,253	216	1,469
Jan - Mar 2015	1,028	90	1,118
2014-15	4,558	948	5,506
Apr - Jun 2015	1,199	95	1,294
Jul - Sep 2015	1,201	150	1,351

Source: Land and Property Services

<https://www.dfpni.gov.uk/articles/new-dwelling-statistics>

1. The date of a new dwelling completion is the date on which the building control completion inspection takes place.
2. The figures only include applications for new dwellings received by Building Control in NI.
3. The figures include domestic apartments and dwellings as defined by Building Control purpose group.
4. Figures will be revised on an annual basis to capture Building Control applications received outside of the quarter.

[Download Table](#)

SECTION 1 – SUPPLY

Table 1.3 Social Housing Development Programme (SHDP) New Social Housing Dwelling Starts 2010/11 – 2015/16^{1,2,3}

Type of Housing		2010/11	2011/12	2012/13	2013/14	2014/15				2014/15	2015/16		
						Apr-Jun	Jul-Sep	Oct-Dec	Jan-Mar		Apr-Jun	Jul-Sep	Oct-Dec
Shared	New Build	48	38	46	6	0	4	0	0	4	0	0	0
	Off-the-Shelf	0	0	0	0	0	0	0	0	0	0	0	0
	Existing Satisfactory Purchase	0	19	4	22	0	0	0	4	4	0	0	0
	Rehabilitation	0	25	24	20	0	0	0	9	9	0	0	0
	Reimprovement	0	0	39	18	0	0	16	22	38	0	0	0
	Sub-total	48	82	113	66	0	4	16	35	55	0	0	0
Self-Contained	New Build	1,704	946	990	787	28	48	375	1,148	1,599	5	0	175
	Off-the-Shelf	400	275	130	295	4	0	15	122	141	5	8	26
	Existing Satisfactory Purchase	93	90	107	90	8	17	39	55	119	23	21	22
	Rehabilitation	169	9	39	53	0	7	5	27	39	5	11	5
	Reimprovement	4	8	0	8	0	0	20	40	60	0	0	0
	Sub-total	2,370	1,328	1,266	1,233	40	72	454	1,392	1,958	38	40	228
	Totals	2,418	1,410	1,379	1,299	40	76	470	1,427	2,013	38	40	228

Source: NIHE

1. The Housing Executive no longer builds new dwellings. This has been the case since 2001-02. Occasionally it may still replace an isolated rural dwelling as part of its cottage improvement programme. Given the rarity of this occurrence, however, information on Housing Executive new builds will no longer be available.
2. Housing Association new social housing dwelling starts are recorded when housing associations confirm the start on-site of new build/rehabilitation/re-improvement units, or the purchase of Off-the-Shelf units, for social housing.
3. The formal definitions of all scheme types can be found in the Housing Association Guide at:

<https://www.dsdni.gov.uk/scheme-types>

[Download Table](#)

SECTION 1 – SUPPLY

Table 1.4 Social Housing Development Programme (SHDP) New Social Housing Dwelling Completions 2010/11 – 2015/16^{1,2,3}

Type of Housing		2010/11	2011/12	2012/13	2013/14	2014/15				2014/15	2015/16		
						Apr-Jun	Jul-Sep	Oct-Dec	Jan-Mar		Apr-Jun	Jul-Sep	Oct-Dec
Shared	New Build	38	12	28	51	0	0	44	5	49	0	22	0
	Off-the-Shelf	0	0	0	0	0	0	0	0	0	0	0	0
	Existing Satisfactory Purchase	0	0	19	0	0	26	0	0	26	0	0	4
	Rehabilitation	0	8	17	4	5	7	8	4	24	9	7	2
	Reimprovement	0	0	0	31	8	0	0	18	26	0	0	0
	Sub-total	38	20	64	86	13	33	52	27	125	9	29	6
Self-Contained	New Build	947	874	925	1,411	176	351	233	383	1,143	19	200	202
	Off-the-Shelf	320	250	185	324	4	38	27	64	133	5	102	42
	Existing Satisfactory Purchase	66	79	28	102	22	43	91	34	190	4	22	34
	Rehabilitation	14	81	49	44	1	39	12	2	54	1	3	18
	Reimprovement	24	6	3	0	0	0	0	13	13	0	0	15
	Sub-total	1,371	1,290	1,190	1,881	203	471	363	496	1,533	29	327	311
	Totals	1,409	1,310	1,254	1,967	216	504	415	523	1,658	38	356	317

Source: NIHE

1. The Housing Executive no longer builds new dwellings. This has been the case since 2001-02. Occasionally it may still replace an isolated rural dwelling as part of its cottage improvement programme. Given the rarity of this occurrence, however, information on Housing Executive new builds will no longer be available.
2. Housing Association new social housing dwelling completions are recorded when housing associations confirm the completion of new build/rehabilitation/re-improvement units, or the purchase of Off-the-Shelf units, for social housing.
3. The formal definitions of all scheme types can be found in the Housing Association Guide at: <https://www.dsdni.gov.uk/scheme-types>

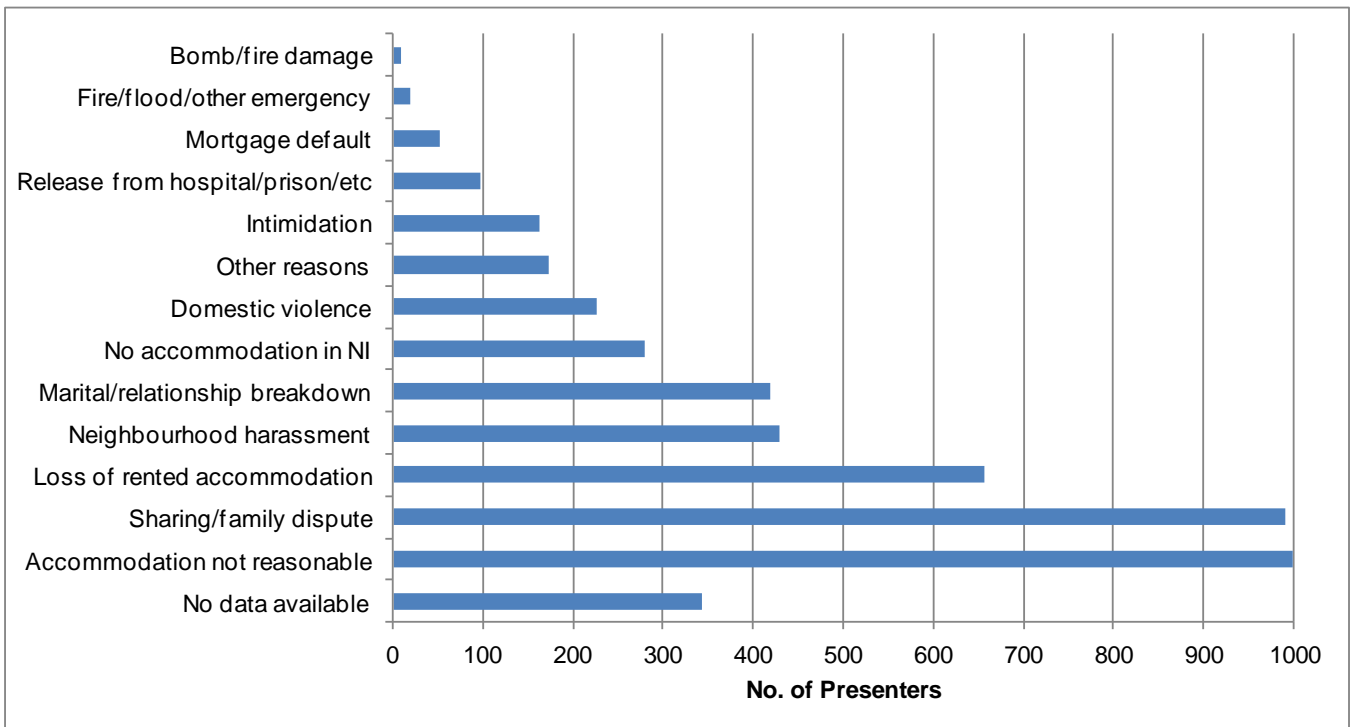
[Download Table](#)

SECTION 2 – SOCIAL RENTING DEMAND

- 2.1 In total, 4,856 households presented as homeless to the Northern Ireland Housing Executive during July - September 2015. This is an increase of 80 (2%) from the previous quarter. The most common reason reported by those presenting as homeless was that their accommodation was not reasonable (999), followed by a sharing breakdown or family dispute (991). Note that for 343 cases, no data on reason for presentation is available; refer to Appendix 1 for further information.
- 2.2 The household types with the highest number of homeless presenters during July - September 2015 were single males (34%) and families (32%). The age group with the highest number of presenters for both single males and single females was the 26 to 59 age group with 1,114 and 480 presenters respectively.
- 2.3 The number of households accepted by the Northern Ireland Housing Executive as full duty applicants for the quarter July - September 2015 was 2,766, an increase of 289 (12%) from the previous quarter. The most common reasons reported by full duty applicants for their current situation was that their accommodation was not reasonable (31%) or they were experiencing a sharing breakdown or family dispute (18%). Of those households accepted as full duty applicants during the quarter, 336 were discharged. A full duty applicant is an applicant considered by the Housing Executive to be eligible, homeless (threatened with homelessness), in priority need and unintentionally homeless, to whom the Housing Executive owes full housing duty.

SECTION 2 – SOCIAL RENTING DEMAND

Figure 2.1: Households Presenting As Homeless By Reason July - September 2015



Source: NIHE

SECTION 2 – SOCIAL RENTING DEMAND

Table 2.1 Households Presenting As Homeless By Reason^{1,2,3,4}

Reason	Sharing breakdown/ family dispute	Marital /relationship breakdown	Domestic violence	Loss of rented accommodation	No accommodation in Northern Ireland	Intimidation ⁴	Accommodation not reasonable	Release from hospital/prison /other institution	Fire/flood /other emergency	Mortgage default	Bomb/fire damage (civil disturbance)	Neighbourhood harassment	Other reasons	No Data on reason for presentation	Total
2010-2011	4,696	2,502	1,010	2,646	1,674	694	3,013	375	437	561	54	1,599	897	0	20,158
2011-2012															
Apr - Jun	1,012	480	211	611	337	139	615	84	25	135	10	327	183	0	4,169
Jul - Sep
Oct - Dec
Jan - Mar
Total	4,317	1,838	896	2,166	969	462	2,779	314	58	449	33	1,112	613	3,731	19,737
2012-2013															
Apr - Jun	919	410	213	708	344	140	799	99	18	121	10	248	184	835	5,048
Jul - Sep	1,017	504	235	657	406	149	730	110	25	107	8	358	194	612	5,112
Oct - Dec	791	478	193	540	351	136	718	103	19	121	9	273	187	352	4,271
Jan - Mar	1,006	529	214	712	412	159	822	103	19	160	10	261	167	349	4,923
Total	3,733	1,921	855	2,617	1,513	584	3,069	415	81	509	37	1,140	732	2,148	19,354
2013-2014															
Apr - Jun	849	428	205	687	363	154	786	116	17	114	10	274	172	448	4,623
Jul - Sep	927	452	232	645	352	180	778	116	17	113	8	357	171	484	4,832
Oct - Dec	861	449	180	548	346	177	764	115	12	93	4	285	190	643	4,667
Jan - Mar	912	460	214	688	338	155	845	102	16	101	7	226	168	508	4,740
Total	3,549	1,789	831	2,568	1,399	666	3,173	449	62	421	29	1,142	701	2,083	18,862
2014-2015															
Apr - Jun	940	438	240	784	345	160	809	121	14	105	8	365	191	388	4,908
Jul - Sep	1,043	539	270	765	448	187	979	129	23	116	8	461	213	139	5,320
Oct - Dec	893	394	216	561	329	121	873	116	25	79	7	311	193	235	4,353
Jan - Mar	1,015	478	230	731	336	122	1,002	105	22	87	4	379	194	335	5,040
Total	3,891	1,849	956	2,841	1,458	590	3,663	471	84	387	27	1,516	791	1,097	19,621
2015-2016															
Apr - Jun	948	379	200	663	277	135	976	130	25	58	8	338	148	491	4,776
Jul - Sep	991	418	226	656	279	162	999	98	19	52	10	430	173	343	4,856

1. Jul - Sep 2011, Oct - Dec 2011 and Jan - Mar 2012 homeless figures are not available on a quarterly basis due to the introduction of a new Housing Management System in July 2011.

2. Following the introduction of the new Housing Management System, no data on reason for presentation is available for 3,731 cases during the period Jul 2011 - Mar 2012 and 835 cases during the period Apr - Jun 2012.

This is due to the merging of two systems, involving data migration and keying variations.

3. For the period Jul - Sep 2012 onwards data migration is no longer an issue. Keying variations will account for a few of the no data on reason for presentation, but the majority relate to three possible outcomes, where the case has been rejected (applicant does not meet the statutory homeless criteria), cancelled (homelessness application registered in error) or concluded (applicant withdraws their homelessness application or where there has been no further contact from the applicant).

4. The intimidation category includes those intimidated due to anti-social behaviour, paramilitarism, sectarianism, racial abuse or sexual orientation. The category has been renamed from 'intimidation (civil disturbance)' to 'intimidation' however the data definition has not changed.

[Download Table](#)

Source: NIHE

SECTION 2 – SOCIAL RENTING DEMAND

Table 2.2 Households Presenting As Homeless By Household Type¹

Household Type	Single males				Single females				Couples	Families	Pensioner Households	Undefined	Total
	16-17 yrs	18-25 yrs	26-59 yrs	Total	16-17 yrs	18-25 yrs	26-59 yrs	Total					
2010-2011	201	2,295	4,690	7,186	219	1,666	1,643	3,528	897	6,454	2,093	0	20,158
2011-2012													
Apr - Jun	45	456	929	1,430	46	377	334	757	198	1,376	408	0	4,169
Jul - Sep
Oct - Dec
Jan - Mar
Total	186	2,193	4,425	6,804	246	1,769	1,754	3,769	924	6,268	1,972	0	19,737
2012-2013													
Apr - Jun	50	527	1,164	1,741	66	438	474	978	216	1,642	471	0	5,048
Jul - Sep	45	608	1,239	1,892	57	444	485	986	217	1,559	456	2	5,112
Oct - Dec	51	468	1,084	1,603	55	344	374	773	176	1,278	441	0	4,271
Jan - Mar	50	519	1,163	1,732	40	427	456	923	221	1,540	507	0	4,923
Total	196	2,122	4,650	6,968	218	1,653	1,789	3,660	830	6,019	1,875	2	19,354
2013-2014													
Apr - Jun	43	507	1,070	1,620	32	340	418	790	209	1,519	485	0	4,623
Jul - Sep	37	516	1,186	1,739	51	355	495	901	237	1,477	478	0	4,832
Oct - Dec	45	528	1,229	1,802	48	342	441	831	202	1,382	450	0	4,667
Jan - Mar	37	476	1,103	1,616	48	371	438	857	220	1,492	555	0	4,740
Total	162	2,027	4,588	6,777	179	1,408	1,792	3,379	868	5,870	1,968	0	18,862
2014-2015													
Apr - Jun	52	473	1,180	1,705	57	367	497	921	207	1,604	471	0	4,908
Jul - Sep	39	532	1,231	1,802	36	388	505	929	263	1,742	584	0	5,320
Oct - Dec	47	503	1,080	1,630	40	332	406	778	193	1,253	499	0	4,353
Jan - Mar	47	505	1,172	1,724	43	349	526	918	211	1,595	592	0	5,040
Total	185	2,013	4,663	6,861	176	1,436	1,934	3,546	874	6,194	2,146	0	19,621
2015-2016													
Apr - Jun	46	509	1,087	1,642	41	357	476	874	208	1,505	547	0	4,776
Jul - Sep	32	487	1,114	1,633	34	366	480	880	217	1,555	571	0	4,856

1. Jul - Sep 2011, Oct - Dec 2011 and Jan - Mar 2012 homeless figures are not available on a quarterly basis due to the introduction of a new computer-based Housing Management System in July 2011.

Source: NIHE

[Download Table](#)

SECTION 2 – SOCIAL RENTING DEMAND

Table 2.3 Homeless Households Accepted As Full Duty Applicants By Reason^{1,2,3,4,5,6}

Reason	Sharing breakdown/ family dispute	Marital /relationship breakdown	Domestic violence	Loss of rented accommodation	No accommodation in Northern Ireland	Intimidation ⁵	Accommodation not reasonable	Release from hospital/prison /other institution	Fire /flood /other emergency	Mortgage default	Bomb /fire damage (civil disturbance)	Neighbourhood harassment	Other reasons	Total	End of Quarter status of households accepted during the Quarter	
															Live Full Duty Applicants ⁶	Discharged Full Duty Applicants
2010-2011	1,995	954	829	1,200	614	361	2,644	226	169	200	25	854	373	10,444		
2011-2012																
Apr - Jun	532	190	196	310	139	55	581	39	25	61	5	213	68	2,414		
Jul - Sep		
Oct - Dec		
Jan - Mar		
Total	2,149	784	697	988	369	303	2,215	182	37	227	26	753	291	9,021		
2012-2013																
Apr - Jun	479	205	193	412	146	109	710	68	11	69	7	184	118	2,711	2,001	710
Jul - Sep	520	211	213	335	174	114	640	69	18	52	7	242	113	2,708	2,271	437
Oct - Dec	389	201	170	257	175	93	630	60	16	68	6	169	97	2,331	1,713	618
Jan - Mar	395	177	144	295	125	95	576	47	12	63	5	128	66	2,128	1,923	205
Total	1,783	794	720	1,299	620	411	2,556	244	57	252	25	723	394	9,878	7,908	1,970
2013-2014																
Apr - Jun	415	202	178	366	140	92	691	70	5	60	9	165	82	2,475	2,170	305
Jul - Sep	451	185	194	319	146	98	691	66	12	53	5	192	81	2,493	2,187	306
Oct - Dec	367	170	157	271	115	105	676	66	8	46	4	173	85	2,243	1,965	278
Jan - Mar	440	197	192	351	123	85	724	54	8	49	3	137	75	2,438	2,210	228
Total	1,673	754	721	1,307	524	380	2,782	256	33	208	21	667	323	9,649	8,532	1,117
2014-2015																
Apr - Jun	451	171	195	387	123	97	669	73	11	48	4	205	84	2,518	1,704	814
Jul - Sep	542	252	250	416	189	125	851	87	16	66	6	306	105	3,211	2,119	1,092
Oct - Dec	393	160	188	284	128	100	753	65	14	41	5	204	104	2,439	1,610	829
Jan - Mar	526	195	199	392	144	83	844	63	18	44	3	237	100	2,848	2,015	833
Total	1,912	778	832	1,479	584	405	3,117	288	59	199	18	952	393	11,016	7,448	3,568
2015-2016																
Apr - Jun	475	144	163	353	95	68	779	77	18	27	7	200	71	2,477	2,254	223
Jul - Sep	496	184	189	367	111	107	858	54	10	25	7	259	99	2,766	2,430	336

1. Jul - Sep 2011, Oct - Dec 2011 and Jan - Mar 2012 homeless figures are not available on a quarterly basis due to the introduction of a new computer-based Housing Management System in July 2011.

Source: NIHE

2. Until the final quarter 2011, the table was entitled "Homeless Households Awarded Priority Status by Reason". The name of the table has been changed to "Homeless Households Accepted as Full Duty Applicants by Reason" to better reflect the terminology used in the new Housing Management System (HMS). The two terms are essentially the same, but because of changes in management procedures and the greater range of outcome decision options (e.g. 'prevention') recorded by the new HMS, data from July 2011 onwards are not directly comparable with previous figures. See Appendix 1 for further details.

3. Figures for the period Apr 2010 to Jun 2011 include those Homeless Households accepted as Full Duty Applicants who were subsequently discharged. The Housing Executive can discharge its duty in one of three ways: by rehousing of the applicant in the social or private sector, by offering the applicant three reasonable offers of accommodation which are all refused or if the applicant rehuses him/herself and is no longer interested. Note that it is not possible to provide a breakdown of discharged Full Duty Applicants into these three subgroups.

4. Following the introduction of the new Housing Management System discharged Full Duty Applicants were not included in figures for July 2011 onwards in reports published prior to the Jan - Mar 2013 bulletin. Figures for 2012-13 onwards now include those Full Duty Applicants who were subsequently discharged. It has not been possible to revise figures for the last 3 quarters of 2011-12 and the overall total for that year due to the introduction of the new HMS and keying variations. See Appendix 1 for further details.

5. The intimidation category includes those intimidated due to anti-social behaviour, paramilitarism, sectarianism, racial abuse or sexual orientation. The category has been renamed from 'intimidation (civil disturbance)' to 'intimidation' however the data definition has not changed.

6. Figures for Live Full Duty Applicants are based on the status of households accepted during the quarter only; they do not represent the overall total of the Live Full Duty Applicant cases.

[Download Table](#)

SECTION 3 – OWNER OCCUPIED HOUSING DEMAND

Northern Ireland Residential Property Price Index

3.1 The Residential Property Price Index has been designed by Land and Property Services to provide a measure of change in the price of a standardised residential property sold in Northern Ireland. It is a quarterly composite index, combining a house price index and an apartment price index. The index uses information on all verified residential property sales as recorded by Her Majesty's Revenue & Customs (HMRC).

Note that Quarter 1 2005 is the reference base period and the index is set to 100 for that period. Results for the most recent quarter are provisional and subject to revision. For more information refer to the following link:

<https://www.dfpni.gov.uk/topics/statistics-and-research/ni-residential-property-price-index>

3.2 The Northern Ireland Residential Property Price Index (NI RPPI) rose from the base value of 100 in Quarter 1 (January - March) 2005 to reach a peak of 201 in Quarter 3 (July - September) 2007. Since the third quarter of 2007 the Residential Property Price Index fell sharply to 126 in Quarter 1 2009 before stabilising. Between Quarter 1 2010 and Quarter 1 2013 the index fell but at a slower rate (from 126 to 87).

3.3 The overall index showed an increase of 3% between Quarter 2 (April - June) and Quarter 3 (July - September) of 2015. Between Quarter 3 (July - September) 2014 and Quarter 3 (July - September) 2015 the residential property price index increased by 7%.

3.4 The Northern Ireland Residential Property Price Index currently stands at 105 in the third quarter of 2015. The index is now 5% higher than in the first quarter of 2005.

3.5 Table 3.2 provides a time series of Verified Property Sales in Northern Ireland. Verified residential property sales are defined as sales recorded by HM Revenue & Customs (HMRC) which could be matched to a domestic property in the NI Valuation List.

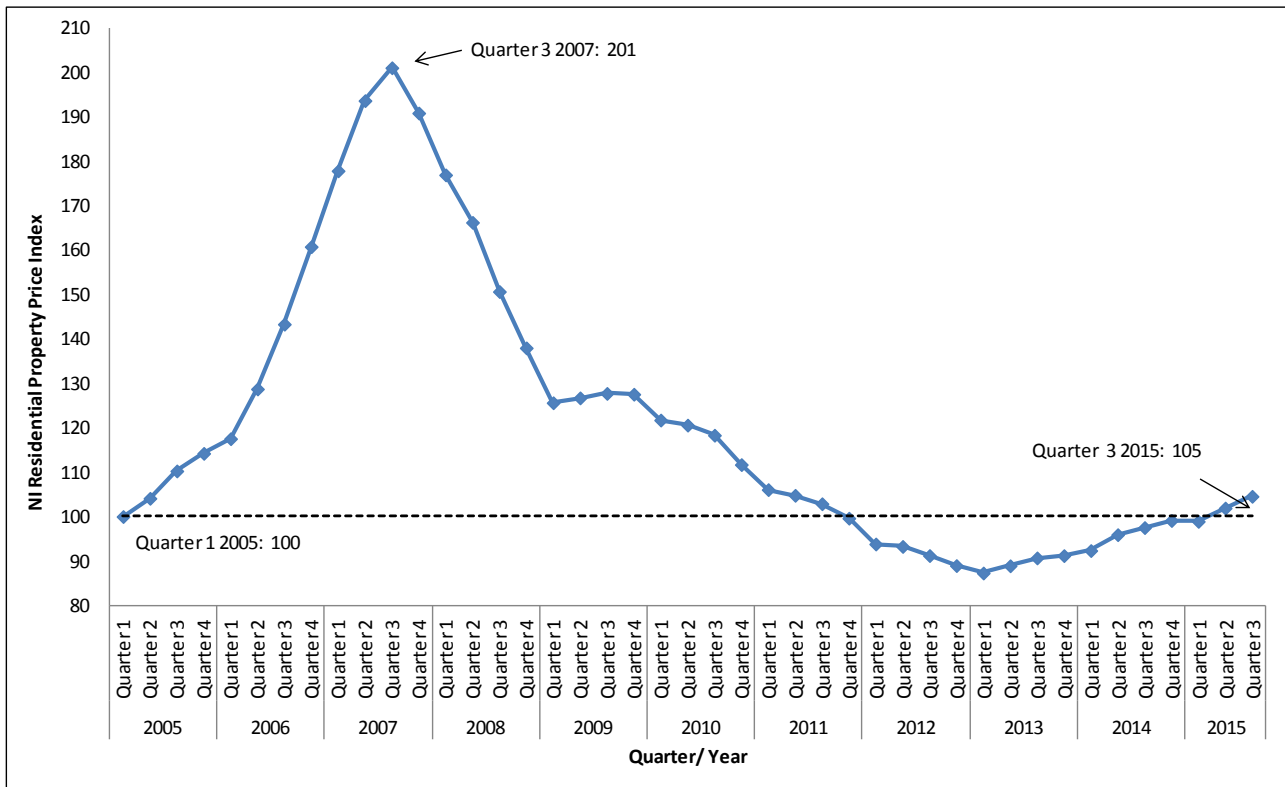
3.6 The annual number of sales stood at just over 29,000 in 2007. Between 2008 and 2011 the annual number of sales was approximately 11 to 12 thousand, rising to over 13,600 in 2012 and over 16,500 in 2013. In 2014 there were over 21,100 verified residential property sales. This is 28% more than the number recorded in 2013.

3.7 In Quarter 3 (July - September) 2015 there were over 5,100 verified residential property sales. This is 6% fewer than the number recorded in Quarter 3 of 2014.

3.8 The standardised price across all property types for Quarter 3 2015 stands at £116,765. The index for each property type increased in Quarter 3 2015 compared to the previous quarter; the index for detached properties, semi-detached properties and apartments increased by 2% whilst that of terraced properties increased by 4%. During the 12 month period to Quarter 3 2015 the residential property price for all property types has risen by 7%.

SECTION 3 – OWNER OCCUPIED HOUSING DEMAND

Figure 3.1: Northern Ireland Residential Property Price Index¹



SOURCE: LPS <https://www.dfpni.gov.uk/topics/statistics-and-research/ni-residential-property-price-index>

1. Detailed explanatory notes, statistics and contact details are available at the link in the source above.

SECTION 3 – OWNER OCCUPIED HOUSING DEMAND

Table 3.1 Northern Ireland Residential Property Price Index^{1,2,3,4,5}

Year	Quarter	NI Residential Property Price Index	Quarterly Change	Annual Change
2005	Quarter 1	100		
2007	Quarter 1	178	11%	51%
	Quarter 2	194	9%	50%
	Quarter 3	201	4%	40%
	Quarter 4	191	-5%	19%
2008	Quarter 1	177	-7%	-1%
	Quarter 2	166	-6%	-14%
	Quarter 3	151	-9%	-25%
	Quarter 4	138	-8%	-28%
2009	Quarter 1	126	-9%	-29%
	Quarter 2	127	1%	-24%
	Quarter 3	128	1%	-15%
	Quarter 4	128	0%	-8%
2010	Quarter 1	122	-5%	-3%
	Quarter 2	121	-1%	-5%
	Quarter 3	118	-2%	-7%
	Quarter 4	112	-6%	-12%
2011	Quarter 1	106	-5%	-13%
	Quarter 2	105	-1%	-13%
	Quarter 3	103	-2%	-13%
	Quarter 4	100	-3%	-11%
2012	Quarter 1	94	-6%	-12%
	Quarter 2	93	-1%	-11%
	Quarter 3	91	-2%	-11%
	Quarter 4	89	-2%	-11%
2013	Quarter 1	87	-2%	-7%
	Quarter 2	89	2%	-5%
	Quarter 3	91	2%	-1%
	Quarter 4	91	1%	3%
2014	Quarter 1	92	1%	6%
	Quarter 2	96	4%	8%
	Quarter 3	98	2%	8%
	Quarter 4	99	2%	9%
2015	Quarter 1	99	0%	7%
	Quarter 2	102	3%	6%
	Quarter 3	105	3%	7%

SOURCE: LPS <https://www.dfpni.gov.uk/topics/statistics-and-research/ni-residential-property-price-index>

1. See Appendix 1 : Data Sources - Owner Occupied Housing Demand
2. Note - Percentage change figures are calculated using unrounded figures
3. Results for the most recent quarter are provisional and subject to revision as more up-to-date data become available.
4. Figures can also change as a result of planned methodological changes, human error or system failures. As a result users should use the most recent full time series rather than appending new data to any previous back series.
5. Detailed explanatory notes, statistics and contact details are available at the link in the source above.

[Download Table](#)

SECTION 3 – OWNER OCCUPIED HOUSING DEMAND

Table 3.2 Number of Verified Residential Property Sales in Northern Ireland^{1,2,3,4}

Year	Quarter	Detached	Semi-Detached	Terrace	Apartment	Total
2007	Quarter 1	2,196	2,463	3,346	685	8,690
	Quarter 2	2,320	2,685	3,577	735	9,317
	Quarter 3	1,909	1,875	2,458	521	6,763
	Quarter 4	1,147	1,208	1,504	419	4,278
	Total	7,572	8,231	10,885	2,360	29,048
2008	Quarter 1	779	875	1,109	237	3,000
	Quarter 2	815	1,027	1,151	321	3,314
	Quarter 3	608	684	785	175	2,252
	Quarter 4	619	721	743	166	2,249
	Total	2,821	3,307	3,788	899	10,815
2009	Quarter 1	529	669	623	173	1,994
	Quarter 2	735	1,018	844	230	2,827
	Quarter 3	862	1,119	1,025	229	3,235
	Quarter 4	993	1,238	1,103	249	3,583
	Total	3,119	4,044	3,595	881	11,639
2010	Quarter 1	639	795	848	221	2,503
	Quarter 2	738	924	849	185	2,696
	Quarter 3	705	906	961	134	2,706
	Quarter 4	824	844	936	208	2,812
	Total	2,906	3,469	3,594	748	10,717
2011	Quarter 1	654	770	816	159	2,399
	Quarter 2	761	811	814	232	2,618
	Quarter 3	961	1,025	949	272	3,207
	Quarter 4	898	987	928	263	3,076
	Total	3,274	3,593	3,507	926	11,300
2012	Quarter 1	937	972	1,017	249	3,175
	Quarter 2	900	975	990	261	3,126
	Quarter 3	1,119	1,131	1,033	274	3,557
	Quarter 4	1,175	1,147	1,179	266	3,767
	Total	4,131	4,225	4,219	1,050	13,625
2013	Quarter 1	1,025	1,072	1,063	274	3,434
	Quarter 2	1,195	1,195	1,226	258	3,874
	Quarter 3	1,334	1,275	1,274	324	4,207
	Quarter 4	1,601	1,571	1,455	426	5,053
	Total	5,155	5,113	5,018	1,282	16,568
2014	Quarter 1	1,479	1,404	1,376	363	4,622
	Quarter 2	1,664	1,653	1,529	413	5,259
	Quarter 3	1,744	1,738	1,567	424	5,473
	Quarter 4	1,834	1,815	1,666	489	5,804
	Total	6,721	6,610	6,138	1,689	21,158
2015	Quarter 1	1,387	1,399	1,351	337	4,474
	Quarter 2	1,518	1,546	1,429	459	4,952
	Quarter 3	1,637	1,643	1,453	386	5,119

SOURCE: LPS <https://www.dfpni.gov.uk/topics/statistics-and-research/ni-residential-property-price-index>

1. See Appendix 1: Data Sources - Owner Occupied Housing Demand
2. Results for the most recent quarter are provisional and subject to revision as more up-to-date data become available.
3. Figures can also change as a result of planned methodological changes, human error or system failures. As a result users should use the most recent full time series rather than appending new data to any previous back series.
4. Detailed explanatory notes, statistics and contact details are available at the link in the source above.

[Download Table](#)

SECTION 3 – OWNER OCCUPIED HOUSING DEMAND

Table 3.3 Northern Ireland Residential Property Price Index by Property Type^{1,2,3,4,5}

Property Type	Index (Quarter 3 2015)	Percentage Change on Previous Quarter	Percentage Change over 12 months	Standardised Price (£) (Quarter 3 2015)
Detached	111	2%	7%	176,891
Semi-Detached	110	2%	7%	114,349
Terrace	98	4%	8%	79,461
Apartment	91	2%	6%	95,122
All	105	3%	7%	116,765

SOURCE: LPS <https://www.dfpni.gov.uk/topics/statistics-and-research/ni-residential-property-price-index>

1. See Appendix 1: Data Sources - Owner Occupied Housing Demand
2. Note - Percentage change figures are calculated using unrounded figures
3. Results for the most recent quarter are provisional and subject to revision as more up-to-date data become available.
4. Figures can also change as a result of planned methodological changes, human error or system failures. As a result users should use the most recent full time series rather than appending new data to any previous back series.
5. Detailed explanatory notes, statistics and contact details are available at the link in the source above.

[Download Table](#)

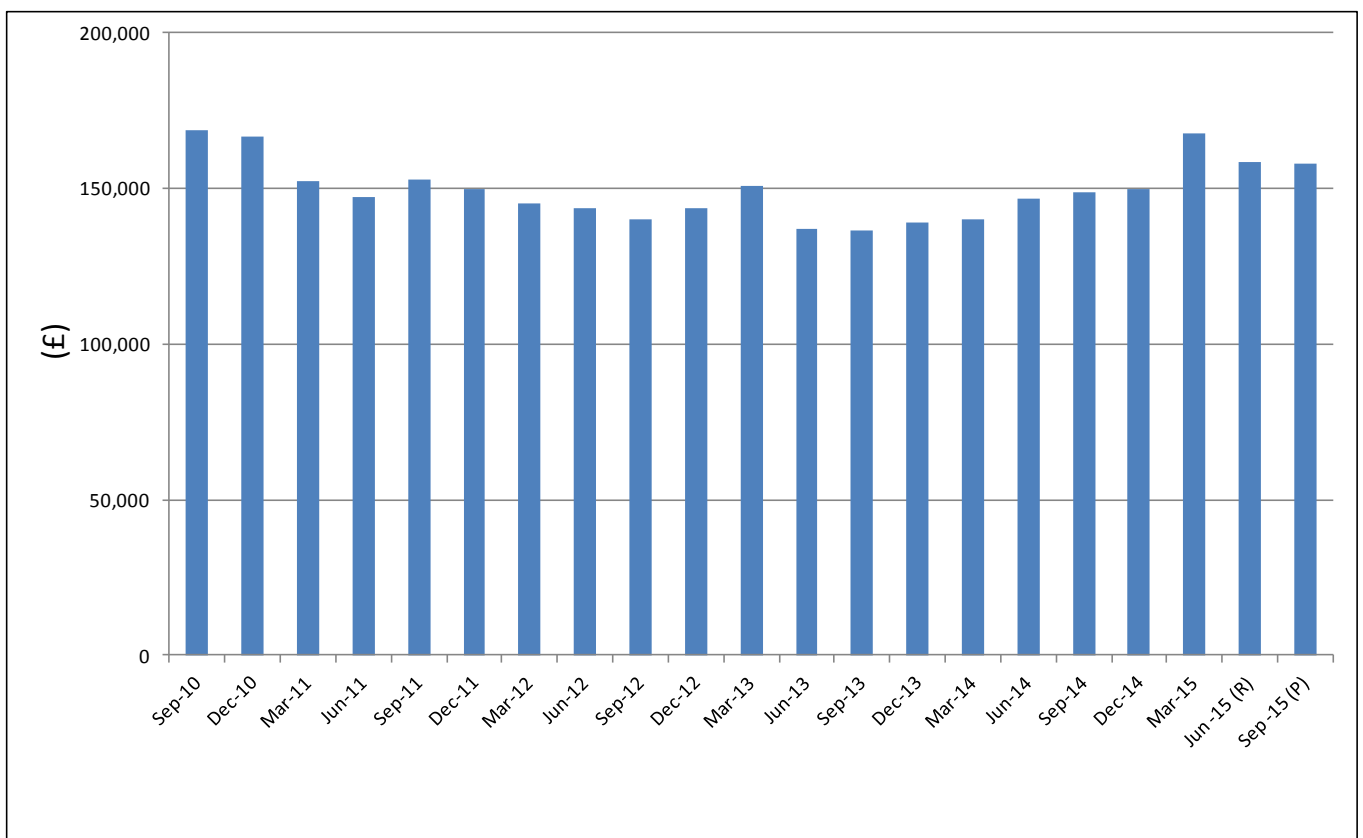
SECTION 3 – OWNER OCCUPIED HOUSING DEMAND

New Dwelling Sales and Prices

The new dwelling sales and prices information in this section is presented by the 11 new LGDs which came into operation on 1 April 2015.

- 3.9 During the quarter ending June 2015, 280 (revised figures) new National House Building Council (NHBC) registered dwellings were sold, a decrease of 16% on the same period in 2014.
- 3.10 The average price stood at £158,400 for April - June 2015 (revised figures), which is a decrease of 6% from the previous quarter (£167,700), and an increase of 8% on the same quarter in 2014.
- 3.11 The largest number of new dwelling sales during the quarter ending June 2015 was in Lisburn and Castlereagh Local Government District (70) with an average price of £173,400.

Figure 3.2: Average Price of New Dwellings Sold Quarters Ending September 2010 - September 2015



SOURCE: NHBC

SECTION 3 – OWNER OCCUPIED HOUSING DEMAND

Table 3.4 Northern Ireland New Dwelling Sales And Prices^{1,2,3}

Quarter / Year	Number Of Sales	Average Price (£)
Year 2005-06	6,969	133,900
Year 2006-07	6,136	164,700
Apr - Jun 2007	1,143	215,300
Jul - Sep 2007	659	216,400
Oct - Dec 2007	650	206,100
Jan - Mar 2008	426	196,700
Year 2007-08	2,878	210,700
Apr - Jun 2008	751	187,900
Jul - Sep 2008	512	183,100
Oct - Dec 2008	544	177,600
Jan - Mar 2009	422	170,100
Year 2008-09	2,229	180,900
Apr - Jun 2009	597	161,100
Jul - Sep 2009	613	165,600
Oct - Dec 2009	636	163,300
Jan - Mar 2010	426	170,400
Year 2009-10	2,272	164,700
Apr - Jun 2010	491	165,200
Jul - Sep 2010	387	168,500
Oct - Dec 2010	453	166,500
Jan - Mar 2011	315	152,200
Year 2010-11	1,646	163,900
Apr - Jun 2011	387	147,000
Jul - Sep 2011	343	152,800
Oct - Dec 2011	406	149,700
Jan - Mar 2012	356	145,000
Year 2011-12	1,492	148,600
Apr - Jun 2012	331	143,500
Jul - Sep 2012	318	140,200
Oct - Dec 2012	321	143,800
Jan - Mar 2013	231	150,700
Year 2012-13	1,201	144,100
Apr - Jun 2013	297	136,900
Jul - Sep 2013	271	136,500
Oct - Dec 2013	308	138,900
Jan - Mar 2014	266	140,100
Year 2013-14	1,142	138,100
Apr - Jun 2014	332	146,900
Jul - Sep 2014	328	149,000
Oct - Dec 2014	331	149,900
Jan - Mar 2015	221	167,700
Year 2014-15	1,212	152,100
Apr - Jun 2015 ^(R)	280	158,400
Jul - Sep 2015 ^(P)	277	158,100

1. Prices rounded to nearest £ hundred.

Source: NHBC

2. Figures relate to those notified to NHBC by purchasers' solicitors.

3. New Dwelling Sales and Prices include houses, bungalows, flats and maisonettes.

[Download Table](#)

SECTION 3 – OWNER OCCUPIED HOUSING DEMAND

Table 3.5 Northern Ireland New Dwelling Sales And Prices^{1,2,3,4} By Local Government District Quarter Ending June 2015 (Revised)

Local Government District	Private Sector Apr - Jun ^(R)		Public Sector Apr - Jun ^(R)		All Sectors Apr - Jun ^(R)	
	Sales	Average Price (£'000)	Sales	Average Price (£'000)	Sales	Average Price (£'000)
Antrim and Newtownabbey	27	148.4	0	N/A	27	148.4
Armagh, Banbridge and Craigavon	22	136.2	0	N/A	22	136.2
Belfast	19	217.3	0	N/A	19	217.3
Causeway Coast and Glens	31	152.7	0	N/A	31	152.7
Derry and Strabane	14	104.8	0	N/A	14	104.8
Fermanagh and Omagh	4	*	0	N/A	4	*
Lisburn and Castlereagh	70	173.4	0	N/A	70	173.4
Mid and East Antrim	23	153.0	0	N/A	23	153.0
Mid Ulster	21	132.3	0	N/A	21	132.3
Newry, Mourne and Down	24	151.1	0	N/A	24	151.1
North Down and Ards	25	179.0	0	N/A	25	179.0
Northern Ireland	280	158.4	0	N/A	280	158.4

1. Prices rounded to nearest £ hundred.

2. Average prices for areas with a small number of sales have been suppressed.

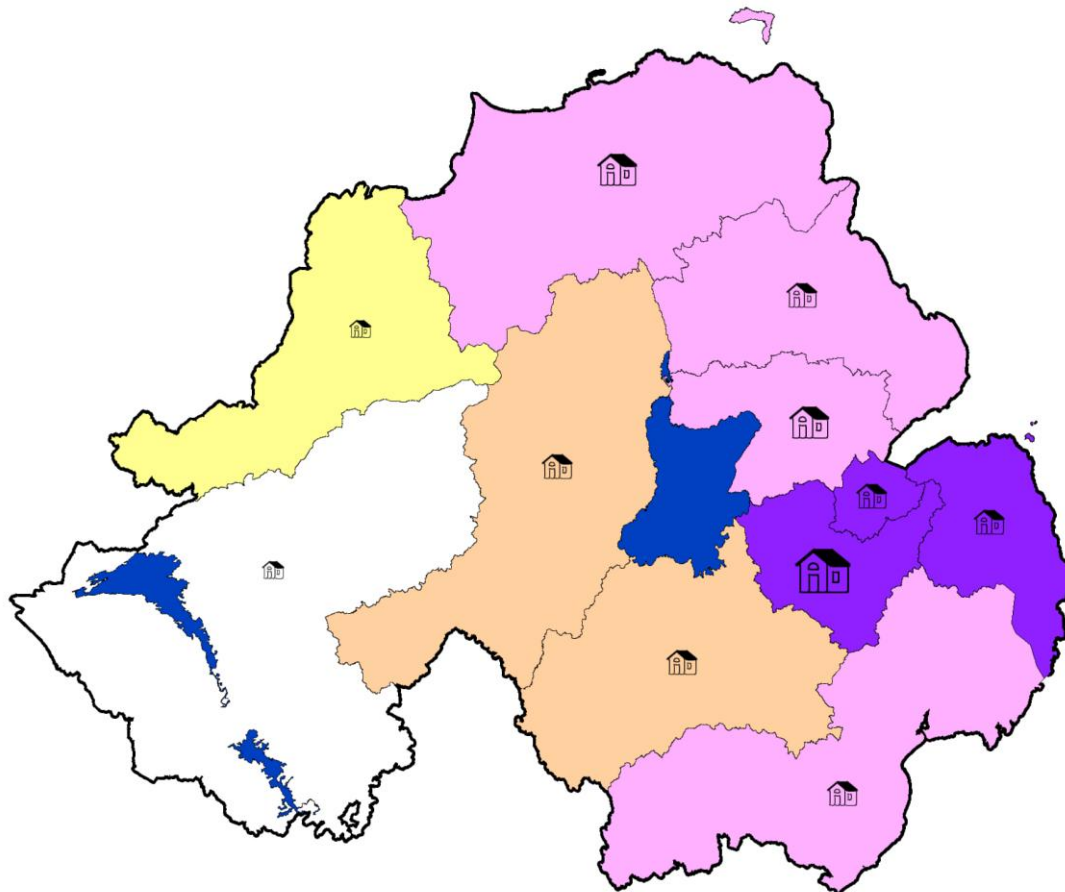
3. New Dwelling Sales and Prices include houses, bungalows, flats and maisonettes.

4. From April – June 2014 Local Government Districts (LGD) have been assigned to new dwellings by matching the dwelling postcode with the Northern Ireland Central Postcode Directory. In previous quarters the LGD stored on the NHBC database was used. These LGDs were either provided by builders or determined manually by NHBC staff referencing maps on the internet. Matching with the Central Postcode Directory is considered to provide a more accurate breakdown by LGD.

Source: NHBC





[Download Table](#)

New Dwelling Sales and Prices April - June 2015



New Dwelling Price (£000s)	
	170 to 217 (3)
	140 to 169 (4)
	120 to 139 (2)
	100 to 119 (1)
	Suppressed Values (1)

Number of Sales

	59 to 70 (1)
	26 to 37 (2)
	15 to 26 (6)
	0 to 15 (2)

Map produced by Analytical Services Unit (DSD) using National House Building Council Sales and Prices Data and LPS boundary data with the permission of the Controller of HMSO

(c) Crown copyright and database rights MOU209

Appendix 1: Data Sources

1. SUPPLY

Building Control Starts and Completions

Land & Property Services (LPS) receive information from Building Control in each council in Northern Ireland. This information contains the number of new domestic dwellings recorded as started and completed.

Each office extracts information from the applications for building approval. This information is then validated and input into a building control database provided by either Tascomi or Northgate. A reporting tool is then used to interrogate the database and extract the relevant information.

For further details see: <http://www.buildingcontrol-ni.com/>.

The date of a new dwelling start is the date on which the first building control inspection takes place. The date of a new dwelling completion is the date on which the building control completion inspection takes place.

Building control defines a property as complete when, further to final inspection being carried out, as far as can be ascertained, the property is in compliance with NI Building Regulations and a certificate is issued.

Data Quality

Relevance

Information on building control new dwellings starts and completions, covering the whole of Northern Ireland, are of interest to anyone with an interest in the housing market. The data are used by government policy makers, economic commentators, business organisations, academics and others.

Accessibility and clarity

Since March 2015 LPS published New Dwelling Starts and Completions data on a quarterly basis, including breakdowns by the 11 District Councils. The time series goes back to 2010. Further information is available on their website:

<https://www.dfpni.gov.uk/articles/new-dwelling-statistics>

Building control starts and completions data are available quarterly within the Northern Ireland Housing Bulletin and annually within the Northern Ireland Housing Statistics publication. Relevant footnotes are included with each table, as necessary, and the published data are available in electronic format on DSD's website.

Accuracy

The statistics cover the whole of Northern Ireland. The only measurable source of error arises from data inputting. Missing values are not an issue. Quality control and validation is carried out by the building control office before sending to LPS. This includes validation of key fields (e.g. purpose group) and other internal consistency checks (e.g. that the description of works aligns with fees and costs of works). When the data are received by LPS additional checks are carried out on the data (e.g. that Purpose Groups and dates are correct). Figures are revised on

an annual basis to capture Building Control applications received outside of the quarter.

Timeliness

Building control starts and completions data are received from councils, collated by LPS, and published quarterly in February, May, August and November.

Coherence and Comparability

Building Control Offices are the sole source of information on private sector new dwelling starts and completions. All 11 District Councils make returns; therefore there is complete coverage of Northern Ireland.

Building Control starts and completions data published by LPS from March 2015 onwards differ from those previously published by DSD due to quality improvements made by LPS which have addressed historical difficulties with regard to late returns by councils and duplicate records.

ASU previously adjusted the private sector completions on receipt of the data due to the perceived under recording of completions data. The adjustment resulted in private sector completions being increased by a factor of 1.32 which was based on the best information available at that time. A review of DSD reporting of starts and completions data in 2014/15, concluded that this adjustment was no longer required, due to improvement over the years in terms of data quality as well as the availability of a longer time series where completions eventually make their way into the series.

Social Housing Development Programme Starts and Completions

Data Quality

Data Source and Validation

The Northern Ireland Housing Executive (NIHE) manages the delivery of the Social Housing Development Programme and maintains a database which records all information relating to social rented sector starts and completions. Data is populated on the database, in part, based on paper returns received from all Housing Associations. Prior to input onto the system the returns are checked and verified. Downloads from the database are also validated to ensure consistency over time and reliability of results.

The majority of social housing starts are confirmed in the final quarter of the programme year (i.e. January to March), as it often takes 6-9 months to secure Planning Permission for a new housing scheme.

For accuracy, a social sector start on-site or completion is only confirmed when appropriate levels of paperwork are received from housing associations. In the case of social sector new build starts on-site, this will include:

- A solicitor's letter confirming that the site is in the ownership of the housing association;
- Proof of Planning Permission;
- An extract of the Works Contract confirming contractor's date of possession of the site.

This differs from Building Control Starts and Completions which are recorded as the date of first and last building control inspection.

Accessibility/Timeliness

Annual social housing starts and completions data are available within DSD's quarterly Northern Ireland Housing Bulletin and annually within the Northern Ireland Housing Statistics publication.

The Northern Ireland Housing Executive publishes a three year Social Housing Development Programme at the following link:

http://www.nihe.gov.uk/index/services/housing_need.htm.

Historical information is available indicating where social housing has been provided over the last 5 years.

In addition, the Housing Executive publishes annual Housing Investment Plans for each of the 11 new District Council areas. Housing Investment Plans describe Housing Executive strategies within the respective District Council areas and in particular provide details of Housing Executive performance over the past year and the programmes planned for the following year. Housing Investment Plans are published on the Housing Executive's website at the following link:

http://www.nihe.gov.uk/index/corporate/plans/district_housing_plans.htm.

Coherence & Comparability - The time series of social housing starts and completions data in this bulletin are coherent and are directly comparable over time.

Links to other parts of UK

Starts and completions data from other parts of the UK can be accessed using the following link:

<http://www.communities.gov.uk/housing/housingresearch/housingstatistics/housingstatisticsby/housebuilding/livatables/>

2. SOCIAL RENTING DEMAND

Homelessness

Statistics on Homelessness are sourced from the Northern Ireland Housing Executive (NIHE). Under the Housing (NI) Order 1988, NIHE has a statutory responsibility to secure permanent accommodation for persons who are unintentionally homeless and in priority need, to secure temporary accommodation in a variety of circumstances and to provide advice and assistance to those who are homeless or threatened with homelessness. For further details see:

http://www.nihe.gov.uk/index/about/Reg_issues/homelessness_information.htm

Information on the NIHE Homelessness Strategy can be found at the following link:

http://www.nihe.gov.uk/index/corporate/strategies/homelessness_strategy.htm

Definition of Full Duty Applicant

The Housing (NI) Order 1988 (as amended) imposes a statutory duty on the Housing Executive to respond to homelessness. Where the Housing Executive has reason to believe an applicant may be homeless or threatened with homelessness it makes enquiries to confirm whether the applicant is eligible for assistance, and whether they are homeless or threatened with homelessness. If homeless or threatened with homelessness, the Housing Executive will need to assess whether

the applicant has a priority need for accommodation and whether they became homeless or threatened with homelessness intentionally.

Where the Housing Executive concludes that an applicant is eligible, homeless (threatened with homelessness), in priority need and unintentionally homeless it owes them the full housing duty in line with the provisions of the 1988 Order. An applicant to whom this full housing duty is owed is operationally referred to as a “Full Duty Applicant” – FDA. Where an applicant is owed the full housing duty, the Executive shall ensure that accommodation becomes available for their occupation.

The Housing Executive can discharge its housing duty in one of three ways: by re-housing of the applicant in the social or private sector, by offering the applicant three reasonable offers of accommodation which are all refused by the applicant or if the applicant re-houses him/herself and is no longer interested.

Data Quality

The following quality information relates to the homelessness tables 2.1, 2.2 and 2.3. Information relating to specific tables is noted as such.

Relevance

Table 2.1 reports on all households presenting as homeless in Northern Ireland, according to the reason for their application. At the end of each financial year, figures are updated due to end of year reporting to include those who presented as homeless who were not on the system at the time the quarterly figures were produced. This can result in an update to figures for the entire financial year.

Table 2.2 reports quarterly statistics on households presenting as homeless in Northern Ireland, by household type. At the end of each financial year, figures are updated due to end of year reporting to include presenters who were not on the system at the time the quarterly figures were produced. This can result in an update to figures for the entire financial year.

Table 2.3 reports on all those who presented as homeless and who were accepted as Full Duty Applicants (FDA) in Northern Ireland, according to the reason for their application. At the end of each financial year, figures are updated due to end of year reporting. Those applicants who applied for FDA status in one quarter but were not accepted until a subsequent quarter are picked up in the end of year report. This can result in an update to figures for the entire financial year due to the redistribution of those not accepted as FDA in the same quarter they presented.

Data are recorded by the Housing Executive in its Housing Management System (HMS), on a daily basis.

The information provided in the tables allows users to assess the level of homelessness in Northern Ireland, the reason for homelessness and those affected. Users include the Department for Social Development in Northern Ireland (DSD) and other government departments, the Housing Executive, elected representatives, councils, agencies, charities, voluntary sector organisations and the private sector.

Accessibility and clarity

APPENDIX 1

Tables are published each quarter in the *Northern Ireland Housing Bulletin*, where it is available in PDF, Excel and Word format. Requests for the information in different formats can be made by contacting the Department for Social Development. Supporting and/or additional information may be available on request from the Housing Executive.

Accuracy

Reports on the status of homelessness presentations are extracted from the Housing Management System for specified date parameters through Crystal Reports. The Housing Executive acknowledges that some errors may occur due to the inputting of incorrect data, but carefully checks all data that are to be published, to provide a high level of quality assurance. Users should be aware that figures are extracted from a live database on a specific date.

Timeliness

Homelessness statistics are published on a quarterly basis in the Northern Ireland Housing Bulletin. A wider range of homelessness statistics are published on an annual basis in the Northern Ireland Housing Statistics publication. The change to a new operational Housing Management System in July 2011 meant that homelessness statistics were not available for the last three quarters in 2011-12.

Coherence & comparability

Table 2.1

Data from July 2011 onwards are not directly comparable with previous figures. Data migration issues and coding variations following the introduction of a new operational Housing Management System (HMS) meant that no data on reason for presentation was recorded for 3731 cases in 2011-12 and 835 cases during April-June 2012. For the period July-September 2012 onwards data migration is no longer an issue. Keying variations accounted for some of the missing data, but the majority related to three possible outcomes – where the case was rejected, cancelled or concluded. While the data captured through the HMS are essentially the same as those captured by the PRAWL system, data migration and coding variations in the period following the change of systems have had a small impact on the comparability of homelessness statistics. Hence figures from July 2011 onwards are not directly comparable with those reported in previous years.

Users should note that the intimidation category has been renamed from 'intimidation (civil disturbance)'. However, the data definition has not changed. The intimidation category includes those intimidated due to anti-social behaviour, paramilitarism, sectarianism, racial abuse or sexual orientation.

Table 2.2

Data from July 2011 onwards are not directly comparable with previous figures. The Housing Management System (HMS) went live in July 2011, replacing the previous 'PRAWL' information management system. While the data captured through the HMS are essentially the same as those captured by the PRAWL system, data migration and coding variations in the period following the change of systems have had a small impact on the comparability of homelessness statistics. Hence figures from July 2011 onwards are not directly comparable with those reported in previous years.

Table 2.3

Data from July 2011 onwards are not directly comparable with previous figures due to the introduction of the new computer-based Housing Management System and the change in outcomes of homeless applications. Prior to the introduction of the new system three outcomes for homeless applications were recorded: 'awarded priority status', 'not homeless', and 'homeless but not awarded priority status'. The new system allows a fuller range of potential outcomes – eight in total – to be recorded of which 'accepted as full duty applicant' is one. Table 2.3 previously included a breakdown of the 'awarded priority status' outcome and now includes a breakdown of the 'accepted as full duty applicant' outcome.

While the strict meaning of 'accepted as full duty applicant' is essentially the same as 'awarded priority status', the greater range of potential outcomes means that it may be misleading to make direct comparisons between the published figures from July 2011 onwards and those for previous years/quarters.

Homeless figures for the period April 2010 to June 2011 include those Homeless Households accepted as Full Duty Applicants who were subsequently discharged. Following the introduction of the new Housing Management System (HMS) however discharged cases were not included in figures for July 2011 onwards in reports prior to the January – March 2013 bulletin. Figures for 2012-13 onwards include those Full Duty Applicants who were subsequently discharged.

It has not been possible to revise figures for the last 3 quarters of 2011-12 and hence the overall total for that year due to the introduction of the new HMS and keying variations. Due to this inconsistency in the time series, figures for 2011-12 are not directly comparable with other years.

Users should note that the intimidation category has been renamed from 'intimidation (civil disturbance)'. However, the data definition has not changed. The intimidation category includes those intimidated due to anti-social behaviour, paramilitarism, sectarianism, racial abuse or sexual orientation.

Homelessness data from other parts of the UK can be accessed using the following links:

England: <https://www.gov.uk/government/collections/homelessness-statistics>.

Scotland:

<http://www.scotland.gov.uk/Topics/Statistics/Browse/Housing-Regeneration/RefTables>.

Wales:

<http://wales.gov.uk/statistics-and-research/homelessness/?lang=en>

3. OWNER OCCUPIED HOUSING DEMAND

Northern Ireland Residential Property Price Index

APPENDIX 1

The detailed methodology behind the NI Residential Property Price Index is given in the following report: [NI RPPI Methodolgy Report](#).

Quality information for the NI Residential Property Price Index is available at: [NI RPPI Quality Report](#)

There are a number of other UK and Northern Ireland house price indices. They are not comparable to the Northern Ireland Residential Property Price Index due to differences in data sources and methodology, but are given below for reference.

- [Halifax House Price Index \(UK\)](#)
- [Nationwide House Price Index \(UK\)](#)
- [Office for National Statistics House Price Index \(UK\)](#)
- [Ulster University House Price Index](#)

NHBC New Dwelling Sales and Prices

Data for new house sales and prices is derived from information provided by solicitors to the National House Building Council (NHBC).

NHBC's primary purpose is to help raise standards to protect homeowners. NHBC is an independent non-profit distributing company, reinvesting all resources in further research and work to improve the construction standard of new UK houses for the benefit of homeowners. For more information refer to the following link: <http://www.nhbc.co.uk/>.

NHBC data relating to other parts of the UK is available in the Housing Market Report which is produced by the NHBC and the Home Builders Federation. It is available by subscription using the following link:

<http://www.nhbc.co.uk/Builders/ProductsandServices/InformationProducts/HousingMarketReport/>.

Data Quality

The following quality information relates to tables 3.4 and 3.5.

Data

NHBC collects information on all new-build properties registered for NHBC's New-Build and Self-Build warranty products. NHBC provides the warranty on approximately 80% of new homes built in the UK.

Data Source

Builders, on registering their intention to build a property, state the anticipated selling price of the property, which is entered on NHBC's computer system.

Once the property is sold, the purchaser's solicitor notifies NHBC of the sale and states the actual selling price by completing an 'Acceptance of Cover' form; either entering the information on-line or by completing and returning a paper form, which will then be entered on the system by NHBC staff. Reports are run on a quarterly basis to bring back the information on selling price of properties sold in Northern Ireland within the time period.

Data Downloads

Reports are run against the database to identify all properties sold in Northern Ireland during the relevant time period that have a purchase price entered on the system. The following checks are carried out on the data returned: (i) reliability of data using logic checks; (ii) checking that variables fall within accepted ranges; and (iii) querying any large discrepancies between anticipated and actual selling price.

Data Validation

NHBC acknowledges that some errors may occur due to the inputting of incorrect data. By careful checking of the data most possible errors are identified, investigated and amendments made where necessary. This validation includes identifying inaccuracies such as missing information or data that may have been keyed incorrectly. Reliance is placed however, on the date of legal completion (date of sale) being entered correctly on the system. Any amendments necessary are made on the system and checks are carried out to confirm that they have been done.

Data Extract

Data for new house sales and prices are provided on a quarterly basis. Quarterly data is combined in Table 3.4 to produce yearly figures. Quarterly statistics are produced from the latest available data. Two tables are provided; the first is a re-run of the previous quarter in order to pick up any late on-line entries or paper forms returned by the solicitors. The second table covers the most recent quarter.

In order to ensure that as many 'Acceptance of Cover' forms as possible are either entered on-line or manually completed and received from the solicitors for properties sold in the time period, these tables are scheduled for issue approximately ten weeks after the period that the most recent table relates to. Due to the time lag in publication, the yearly total for new house sales and prices uses the re-run quarterly data supplied.

Quality Assurance

The data is thoroughly checked and any anomalies investigated prior to issue in order to provide a high level of quality assurance. Nevertheless, as the figures are extracted from a live database on a particular date, figures may change due to late notification from solicitors. This is why a re-run of the previous quarter is supplied alongside the data for the most recent quarter.

User Needs

NHBC welcomes any request for additional information and the requirements would be fully discussed to determine whether the data is available.

Comparability

The time series of data in Table 3.4 are directly comparable over time as the methods of collecting the data have not changed.

From April – June 2014 Local Government Districts (LGD) have been assigned to new dwellings by matching the dwelling postcode with the Northern Ireland Central Postcode Directory. In previous quarters the LGD stored on the NHBC database was used. These LGDs were either provided by builders or determined manually by

NHBC staff referencing maps on the internet. Matching with the Central Postcode Directory is considered to provide a more accurate breakdown by LGD.

Timeliness

Data is provided to Analytical Services Unit DSD on a quarterly basis. The submission dates being the end of January (re-run of Q2 and first run of Q3), April (re-run of Q3 and first run of Q4), June (re-run of Q4 and first run of Q1) and September (re-run of Q1 and first run of Q2). Where: Q1=Jan to Mar, Q2=Apr to Jun, Q3=Jul to Sep and Q4= Oct to Dec.

General Data Trends

It is not possible to make specific comments on the data that is supplied as it relies on solicitors informing NHBC of the sale in a timely manner, and it is possible that NHBC is notified many months after the sale of the property, or maybe not at all.

4. HOUSE/DWELLING

For the purposes of this Bulletin, the terms 'house' and 'dwelling' are interchangeable and can be defined as: 'a self-contained unit of accommodation, having all amenities available to each household (own kitchen, bathroom and toilet) regardless of shared entrance'. A 'house' or 'dwelling' will, therefore, comprise 'either one self-contained household space or a number of non self-contained household spaces'.

APPENDIX 2

Appendix 2: Changes to 'Section 1 – Supply' Following Review in 2014/15

Prior to the review of new dwelling starts and completions data carried out in 2014/15 the charts and tables included in Section 1 of the bulletin were as follows:

- Figure 1 New Dwelling Starts and Completions 2003/04 to 2013/14
- Table 1.1 Total New Dwelling Starts By Sector 2003-04 to 2013-14
- Table 1.2 Total New Dwelling Starts By Sector and By Local Government District Quarters Ending March 2013 and March 2014
- Table 1.3 Total New Dwelling Completions By Sector 2003-04 to 2013-14

Since the April – June 2015 bulletin published in October 2015, these charts and tables have been replaced by the following:

- Figure 1.1 Building Control New Dwelling Starts
- Figure 1.2 Building Control New Dwelling Completions
- Table 1.1 Building Control New Dwelling Starts by development type
- Table 1.2 Building Control New Dwelling Completions by development type
- Table 1.3 Social Housing Development Programme (SHDP) New Social Housing Dwelling Starts
- Table 1.4 Social Housing Development Programme (SHDP) New Social Housing Dwelling Completions

Building Control New Dwelling Starts and Completions data within these tables are sourced from Building Control offices linked to the local councils via Land and Property Services (LPS).

LPS released a New Dwelling Starts and Completions time series on 25th March 2015, available at: <https://www.dfpni.gov.uk/articles/new-dwelling-statistics>.

This was the first time that LPS published the starts and completions data that had previously been provided by LPS to DSD for inclusion in the DSD Housing National Statistics. These figures differ from those previously published by DSD due to quality improvements made by LPS to the starts and completions data which addressed historical difficulties with regard to late returns by councils and duplicate records.

Since DSD took over responsibility for publishing the Northern Ireland Housing Statistics reports in 2000, ASU have adjusted the private sector completions on receipt of the data. This process was first introduced following concerns regarding the perceived under recording of completions data. The adjustment resulted in private sector completions being increased by a factor of 1.32 which was based on the best information available at that time. The review of DSD reporting of starts and completions data carried out in 2014/15,

APPENDIX 2

concluded that this adjustment was no longer required, due to improvement over the years in terms of data quality as well as the availability of a longer time series where completions eventually make their way into the series.

The starts and completions data for the social sector in tables 1.3 and 1.4 continue to be sourced from the NIHE which manages the Social Housing Development Programme (SHDP). The required number of housing starts for the SHDP is set out in the Programme for Government targets (<http://www.northernireland.gov.uk/pfg>) and DSD is responsible for the allocation of funding for the programme.