

STRONG INCREASE IN THE NUMBER OF NOMAD CATTLE ON LOCAL FARMS

During August 2020 there were 3,194 cattle imported from ROI for further breeding and production on NI farms which takes total cattle imports from ROI during 2020 to date to 26,055 head.

This level of cattle import for breeding and production recorded during 2020 to date is almost double the 13,267 cattle imported from ROI during the same period in 2019 and is the highest level of import recorded since 2010. This strong increase in the level of cattle imports from ROI year on year has resulted in an increase in the number of mixed origin/NOMAD cattle in all age categories on local farms at the end of August 2020.

Figure 1 displays the number of imported beef sired cattle (bulls/steers and heifers) that were on NI farms at the end of August 2020 compared to the previous two years. Overall there were 17,294 imported cattle on NI farms at the end of August 2020 aged under 30 months, a notable increase from 8,765 head in August 2019 and 6,009 in August 2018.

While there has been a strong increase in beef sired cattle imports from ROI it

is important to note that imported cattle only account for a small proportion of the overall cattle herd in NI. At the end of August 2020 imported cattle accounted for 2.7 per cent of total beef sired cattle in the 18-24 month age range and 4.4 per cent of beef sired cattle in the 24-30 month age range as outlined in **Table 1**.

There has also been an increase in the number of imported dairy sired male cattle on local farms, although the numbers are small in comparison to beef sired cattle numbers. At the end of August 2020 there were a total of 2,022 dairy sired male cattle under 30 months on local farms that were imported, up from 946 head in August 2019 and 347 head in August 2018.

Labelling

EU labelling regulations require beef labels to state the country or countries of origin where the animal was born, reared and slaughtered in. Under these regulations beef produced from these 'mixed origin' or 'NOMAD' animals currently residing on local farms must be identified as born in ROI and reared and slaughtered in the UK.

With many of the major UK retailers only

accepting beef from animals that have single origin status (i.e. have been born, reared and slaughtered within either the UK or ROI) the range of market outlets for this mixed origin beef is more limited and will most likely be reflected in the deadweight prices available at the point of slaughter.

It is worth noting that beef from cattle imported from ROI for further production on local farms is eligible to gain Northern Ireland Farm Quality Assured (FQAS) status provided that they have completed the 90 day residency on an FQAS approved farm in Northern Ireland prior to slaughter. However due to their mixed origin status beef from these cattle does not qualify for the Red Tractor Logo which is a further requirement of trading with most of the major UK retailers.

As a result of the more restricted market outlets some of the major processors in NI do not want mixed origin or NOMAD cattle. It is therefore very important that anyone considering buying ROI origin cattle for further production on local farms has contacted the procurement staff of the individual plants to ensure they have a market outlet for these cattle when they are finished.

Figure 1: Beef sired cattle imported from ROI on local farms at the end of August 2018-2020 by age category. Source: APHIS

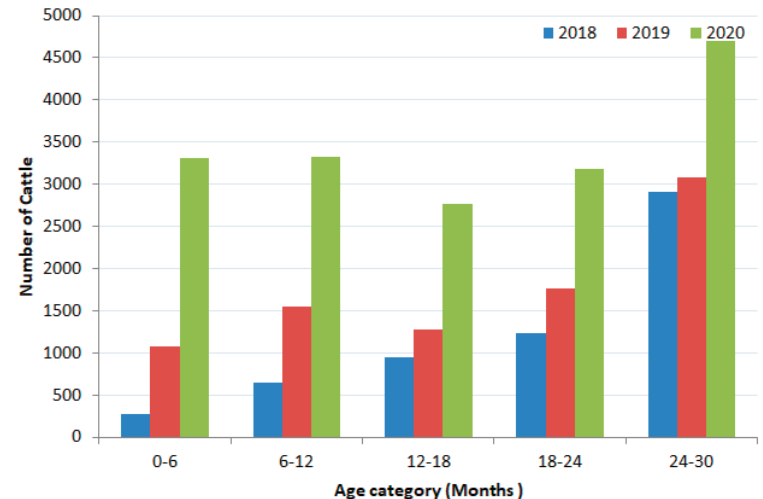


Table 1: Beef sired NOMAD cattle as a proportion of total beef sired cattle population in NI at the end of August 2018-2020 by age category. Source: APHIS

Age category (Months)	2018	2019	2020
0-6	0.2%	0.6%	1.8%
6-12	0.5%	1.1%	2.3%
12-18	0.5%	0.7%	1.4%
18-24	1.0%	1.5%	2.7%
24-30	2.7%	2.7%	4.4%
Total	0.8%	1.2%	2.3%

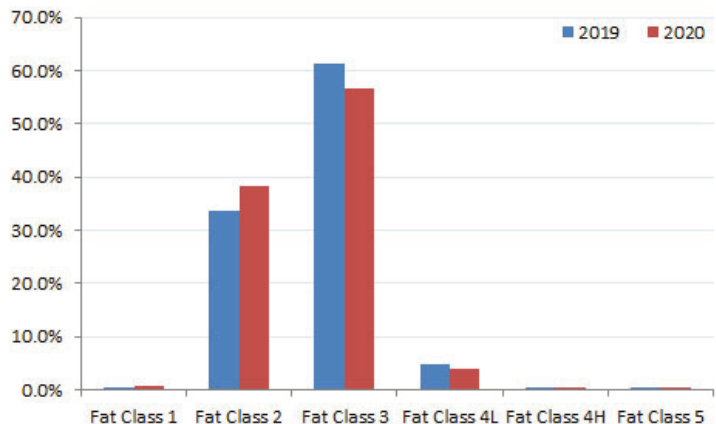
LAMB GRADING OVERVIEW

JUNE - AUGUST 2020

Reports from the processors have indicated some downward movement in the fat scores of lambs being presented for slaughter in local plants when compared to previous years.

Analysis of deadweight lamb price reporting statistics have shown a general downward shift in fat scores as outlined in **Figure 2** below. Between June and August 2020 1.2 per cent of

Figure 2: Fat scores achieved by deadweight price reported lambs in NI June to August 2019-2020. Source: DAERA



lambs were a fat class 1, up from 0.4 per cent in the same period in 2019. Meanwhile lambs achieving a fat class 2 accounted for 40.2 per cent of price reported lambs in the 2020 period, up from 34.7 per cent during the same period last year.

Lambs awarded a fat class 3 accounted for 54.9 per cent of price reported lambs in the 2020 period, back from

60.9 in the same period last year.

While lambs have been killed at lower fat classes this year the conformation scores have improved. R grading lambs accounted for 53.3 per cent of price reported lambs during June-August 2020, back from 63.6 per cent in the same period in 2019. Meanwhile the proportion of U grading lambs increased from 34.3 per cent in the 2019 period to 43.9 per cent in the 2020 period.

With many producers opting to kill lambs earlier and lighter this year lamb carcass weights continue to trend behind previous years. The average carcass weight in NI between June-August 2020 was 21kg, back from 21.4kg in the same period last year.

Meanwhile lamb throughput continues to trend ahead of last year with 138,040 lambs killed between June-August 2020, up from 124,820 head in the same period last year. This increase in throughput by 13,220 head accounts for an 11 per cent increase year on year.

COVID PAYMENT UPDATE

28 March 2020

In recent days livestock producers in NI who are eligible for payment under the Covid-19 scheme should have received correspondence from DAERA to complete an application via DAERA online services. In total £11 million is available to dairy farmers, £7 million to beef farmers and £232,000 to sheep farmers.

In addition to the payment outlined above all prime cattle, cull cows and bulls aged over 12 months killed between 29 March 2020 and the 16 May 2020 will be eligible for a further payment of £40. This second payment will be paid to whoever was the registered owner on the 28 March 2020.

The scheme opened for applications from livestock farmers on **Monday 07 September 2020** and will remain open until midnight on **Wednesday 23 September 2020**. The intention is to make payments to livestock farmers within two weeks of the scheme closing date.

Beef

Eligibility for the beef payment is dependent upon who owned the animal on certain key dates.

15 February 2020

All prime cattle, cull cows and bulls aged over 12 months and slaughtered between the 16 February 2020 and the 30 June 2020 are eligible for a payment of £33 and this will be paid to whoever was the registered owner on the 15 February 2020.

In most cases the £73 will go to the same producer provided that they owned the animal on the 15 February 2020 and the 28 March 2020. However if the animal was traded between these two dates then the first and second payments on an eligible animal will be paid to two different producers.

Sheep

All sheep slaughtered during the period 22 March 2020 to 18 April 2020 are eligible for a payment of £6.88/head. Sheep slaughtered in local plants and exported to ROI for direct slaughter are eligible under the scheme. The payment will be made to whoever was the registered owner of the animal on the 21 March 2020.

FQAS Helpline

If you have had a recent inspection and need help and advice to rectify any non-conformances, contact the FQAS helpline:
Tel: 028 9263 3024

Answerphone Service

Factory Quotes & Mart Results
Updated 5pm Daily
Tel: 028 9263 3011

Text Service

Free weekly price quotes sent to your mobile phone
Email - bulletin@lmconi.com
Tel: 028 9263 3000

WEEKLY BEEF & LAMB MARKETS



CATTLE TRADE

NI FACTORY BASE QUOTES FOR CATTLE

(P/KG DW)	This Week 07/09/20	Next Week 14/09/20
Prime		
U-3	350 - 358p	350 - 358p
R-3	344 - 352p	344 - 352p
O+3	338 - 346p	338 - 346p
P+3	288 - 300p	288 - 300p
Including bonus where applicable		
Cows		
O+3 & better	260 - 270p	260 - 270p
Steakers	140 - 170p	140 - 170p
Blues	120 - 130p	120 - 130p

Cow quotes vary depending on weight and grade.
Pricing policies vary from plant to plant. Producers are advised to check pricing policies before presenting cattle for slaughter.

Deadweight Cattle Trade

Base quotes from the major plants this week for in spec U-3 grade prime cattle ranged from 350-358p/kg with the majority of plants quoting 354-358p/kg for steers and heifers. Quotes for O+3 grading cows held steady at 260-270p/kg this week. Similar quotes are expected for all types of cattle early next week.

Prime cattle throughput in NI plants totalled 6,636 head last week which was similar to the previous week. The average carcass weight of prime cattle was 347.7kg, up marginally from 346.6kg in the same week last year. Cow throughput in NI last week totalled 1,823 head, back 160 cows from the previous week. The average cow carcass weight in NI last week was 302.1kg, back from 306.8kg in the same week last year.

Imports of cattle from ROI for direct slaughter in local plants last week consisted of 255 prime cattle and 126 cows which was similar to the previous week. Exports from NI to ROI for direct slaughter last week consisted of 118 cows while no cattle were exported to GB for direct slaughter.

Deadweight prices for prime cattle in NI continued to come under pressure last week with the average steer price back by 3.8p/kg to 357.9p/kg while the R3 steer price was back 4.8p/kg to 367.6p/kg. The average heifer price was back 1.6p/kg to 361.5p/kg last week while the R3 heifer price decreased by 2.2p/kg to 368.3p/kg. The average young bull price decreased by 2.8p/kg to 348.5p/kg last week with the R3 young bull price back by 2p/kg to 359.8p/kg. The cow trade also came under pressure in NI last week with the average cow price back just over 5p/kg to 248.3p/kg while the O3 cow price decreased by 1.4p/kg to 277.8p/kg.

The deadweight trade for prime cattle in GB continued to come under pressure last week with the majority of grades reporting declines from the previous week. The average GB steer price was back by 0.7p/kg to 372.9p/kg while the R3 steer price decreased by 1.4p/kg to 379.3p/kg. R3 steer prices recorded increases of just over a penny in Scotland and Northern England while notable declines were recorded in the Midlands and Wales (-3.7p/kg) and Southern England (-5.1p/kg). The average heifer price in GB last week decreased by 0.8p/kg to 373p/kg with the R3 heifer price holding steady at 378.8p/kg. The cow trade in GB came under pressure last week with the average cow price back by 9.2p/kg to 253p/kg with strong declines reported in the Midlands and Southern England. Last week the O3 cow price in GB decreased by 10.5p/kg to 277.9p/kg similar to the corresponding price reported in NI.

In ROI last week the deadweight prime cattle trade came under pressure and this combined with a weakening in euro against sterling has resulted in the majority of deadweight prime cattle prices decreasing by 4-6p/kg. The R3 steer and heifer price in ROI were both back last week by just over 4p/kg to the equivalent of 326p/kg and 327.7p/kg respectively. Prime cattle throughput in ROI last week totalled 28,310 head, a three per cent increase from the previous week.

LAST WEEK'S DEADWEIGHT CATTLE PRICES (UK / ROI)

	W/E 05/09/20	Northern Ireland	Rep of Ireland	Scotland	Northern England	Midlands & Wales	Southern England	GB
Steers	U3	367.7	336.0	395.8	378.3	378.9	381.2	383.8
	R3	367.6	326.0	393.5	379.2	373.4	373.2	379.3
	R4	364.4	325.8	394.0	382.4	375.0	371.5	384.9
	O3	356.4	307.8	380.2	359.4	352.4	354.8	358.0
	AVG	357.9	-	390.9	371.5	364.5	363.8	372.9
Heifers	U3	372.0	339.2	401.5	387.1	386.4	381.9	389.8
	R3	368.3	327.7	391.9	380.5	376.1	372.4	378.8
	R4	365.7	327.3	394.1	379.0	375.9	372.3	382.8
	O3	358.2	312.8	388.3	360.9	351.5	350.5	357.1
	AVG	361.5	-	391.0	373.5	364.7	361.1	373.0
Young Bulls	U3	360.5	319.3	380.1	379.4	377.6	373.3	378.6
	R3	359.8	312.7	377.4	364.2	368.2	371.4	370.1
	O3	343.9	291.0	331.6	349.3	334.9	341.0	340.0
	AVG	348.5	-	369.5	355.6	360.0	349.0	360.3
Prime Cattle Price Reported		5,611	-	5,559	6,463	6,531	4,142	22,695
Cows	O3	277.8	261.8	290.5	276.4	275.6	277.9	277.9
	O4	282.2	262.5	291.6	281.4	277.1	273.3	279.5
	P2	236.6	236.8	254.8	236.9	236.4	244.3	239.8
	P3	256.2	252.4	265.4	245.3	255.5	253.3	254.2
	AVG	248.3	-	284.5	257.4	246.4	244.9	253.0

Notes: (i) Prices are p/kg Sterling-ROI prices converted at 1 euro=89.18p Stg
(ii) Shading indicates a lower price than the previous week.
(iii) AVG is the average of all grades in the category, not just those listed

REPORTED NI CATTLE PRICES - P/KG

W/E 05/09/20	Steers	Heifers	Young Bulls
U3	366.9	371.9	359.7
R3	364.0	366.2	359.6
O+3	357.5	357.8	350.5

*Prices exclude AA, HER and Organic cattle

REPORTED COW PRICES NI - P/KG

W/E 05/09/20	Weight Bands			
	<220kg	220-250kg	250-280kg	>280kg
P1	168.1	181.1	192.6	209.4
P2	182.3	212.1	229.6	248.6
P3	140.0	237.8	248.7	260.2
O3	230.0	272.7	270.1	278.8
O4	230.0	-	-	282.4
R3	-	-	-	296.7

LATEST LIVEWEIGHT CATTLE MART PRICES NI

	W/E 05/09/20	1st QUALITY			2nd QUALITY		
		From	To	Avg	From	To	Avg
Finished Cattle (p/kg)							
Steers		217	226	222	190	216	205
Friesians		160	173	166	133	159	148
Heifers		200	223	208	180	196	190
Beef Cows		153	214	164	115	152	135
Dairy Cows		113	153	122	95	112	105
Store Cattle (p/kg)							
Bullocks up to 400kg		235	280	258	200	234	215
Bullocks 400kg - 500kg		220	268	242	200	219	210
Bullocks over 500kg		212	228	220	180	211	198
Heifers up to 450kg		225	266	240	195	224	208
Heifers over 450kg		200	224	212	170	199	185
Dropped Calves (£/head)							
Continental Bulls		380	540	410	250	375	310
Continental Heifers		300	430	340	200	295	250
Friesian Bulls		160	290	220	90	155	115
Holstein Bulls		170	270	190	2	165	80

SHEEP TRADE

NI SHEEP BASE QUOTES

(P/Kg DW)	This Week 07/09/20	Next Week 14/09/20
Lambs up to 21kg	445-450p	445-450p

REPORTED SHEEP PRICES

(P/KG)	W/E 22/08/20	W/E 29/08/20	W/E 05/09/20
NI L/W Lambs	418.6	418.6	415.3
NI D/W Lambs	439.7	437.7	437.4
GB D/W Lambs	460.9	444.5	457.5
ROI D/W	444.7	449.2	450.1

Deadweight Sheep Trade

Quotes from the plants for R3 grading lambs held steady this week at 445-450p/kg up to 21kg with similar quotes expected for Monday. Lamb throughput in NI last week totalled 9,243 head, back 1,078 head from the previous week. A further 8,365 lambs were exported from NI to ROI for direct slaughter last week, up from 6,973 lambs during the previous week. Lamb exports accounted for 48 per cent of the total NI lamb output last week. The deadweight lamb price in NI last week was marginally back to 473.4p/kg from the previous week while the deadweight lamb price in ROI last week increased by just under a penny to the equivalent of 450.1p/kg.

Liveweight Sheep Trade

Strong numbers of lambs continue to pass through the local sale rings with a good trade reported across many of the marts this week. In Swatragh last Saturday 2,500 lambs sold from 385-439p/kg compared to 1,520 lambs the previous week selling from 385-462p/kg. On Monday in Kilrea 550 lambs sold from 407-477p/kg compared to 480 lambs last week selling from 407-430p/kg. In Rathfriland this week 849 fat lambs sold from 410-505p/kg (avg 430p/kg) compared to 740 fat lambs last week selling from 400-500p/kg (avg 421p/kg). In Armooy this week 476 lambs sold from 390-425p/kg compared to 573 lambs last week selling from 411-467p/kg. Strong numbers of cull ewes passed through the marts this week with top prices ranging from £95- £134. The top price of £134 was reported in Rathfriland on Tuesday.

LATEST SHEEP MARTS (P/KG LW)

From: 05/09/20		Lambs			
To: 10/09/20		No	From	To	Avg
Saturday	Omagh	1058	439	522	-
	Swatragh	2500	385	439	-
Monday	Massereene	1073	410	452	-
	Kilrea	550	407	477	-
Tuesday	Saintfield	577	410	480	-
	Rathfriland	849	410	505	430
Wednesday	Ballymena	2804	390	439	413
	Enniskillen	1985	400	462	-
	Armooy	476	390	425	-
	Markethill	1360	400	430	-

Strict Covid - 19 restrictions are in place across all of the livestock marts

Information supplied by LMC / DAERA/ AHDB/ DAFM

LMC does not guarantee the accuracy or completeness of any third party information provided in or included with this publication. LMC hereby disclaims any responsibility for error, omission or inaccuracy in the information, misinterpretation or any other loss, disappointment, negligence or damage caused by reliance on third party information.

Not for further publication or distribution without prior permission from LMC

Contact us

T: 028 9263 3000
E: bulletin@lmcni.com
W: www.lmcni.com

