

PBNI Caseload Statistics

Quarter 3 2015/16

Report based on information from the PBNI Case Management System on 31st December 2015



Introduction

This report provides provisional statistics on the PBNI caseload by month for 2015/16. Comparisons are made between the current and previous financial year throughout the report. For those statistics on the number of court reports completed, the number of new orders added to the PBNI caseload and victims information scheme registrations, comparisons are between the financial year to date (FYTD) and the previous financial year to date (PFYTD) (i.e. 1 April 2015 – 31 December 2015 compared with 1 April 2014 – 31 December 2014). However for statistics on the total caseload (point in time), comparisons are made with the position at the same point in the previous financial year (i.e. the position on 31 December 2015 compared with the position on 31 December 2014).

The data presented in this publication is drawn from PBNI's case management system (PIMS). Although care is taken when processing and analysing the data, the data is subject to inaccuracies inherent in an administrative data recording system. While figures have been checked as far as practicable, they should be regarded as approximate and not necessarily accurate to the last whole number shown in the tables. Where percentages have been presented they are subject to rounding.

Comment and feedback on these statistics is welcome. In particular your views are sought on the potential removal of Table 2, to be replaced with the table in Annex 2. If you would like to forward your views contact PBNI Statistics & Research Branch at 02890 262400 ext. 2525, or e-mail: statistics&research@pbni.gsi.gov.uk.

Key Points

Section 1: Reports (Page 2)

- There were 6,221 reports (all report types) completed between 1 April and 31 December 2015, a decrease of 3% on the same period in 2014 (6,420).
- The combined total of Pre Sentence Reports (PSR) and Short Pre Sentence Reports (SPSR) completed between 1 April and 31 December 2015 was 3,811, this is 4% lower than the number completed in the same period of 2014 (3,973).
- Looking at a longer term trend; there were 5,295 PSRs and SPSRs completed in the 12 months to the end of December 2015 which is 8% lower than in the 12 months to the end of December 2014 (5,751).
- The majority of PSRs and SPSRs completed by PBNI are provided to Magistrates Courts (82%) with 14% provided to Crown Court. Compared with April to December 2014, there has been a 41% decrease in the number of PSRs and SPSRs completed for Crown Court (917 in Apr-Dec 2014 to 537 in Apr-Dec 2015). The number of PSRs and SPSRs provided to Magistrates Courts has increased by 7% (2,928 in Apr-Dec 2014 to 3,125 in Apr-Dec 2015).

Section 2: Total Caseload [Point in Time] (Page 4)

- At 31 December 2015, there were 4,375 people subject to 4,761 orders on the PBNI caseload. Three-quarters of people (3,415, 78%) were supervised by PBNI teams in the community, with the remainder in custody (960, 22%).
- The total number of people on the caseload at 31 December 2015 is 1% higher than the number on the caseload at the end of December 2014 (4,341).
- The number of Community Service Orders under supervision continues to increase this year, and at 31 December 2015 was 28% higher than at the end of December 2014.
- The number of Determinate Custodial Sentences (DCS) on the caseload is 13% lower than at the end of December 2014.

Section 3: New Orders (Page 8)

- Between 1 April and 31 December 2015, 2,434 new statutory orders were added to the PBNI caseload. This is 9% higher than the same period of 2014 (2,231).
- Looking at a longer term trend; there were 3,304 new orders made in the 12 months to the end of December 2015. This is 1% higher than the total made in the 12 months to the end of December 2014 (3,260).

Section 4: Victims Information Scheme (Page 11)

- There were 100 new registrations to the PBNI Victims Information Scheme in the first nine months of 2015/16.

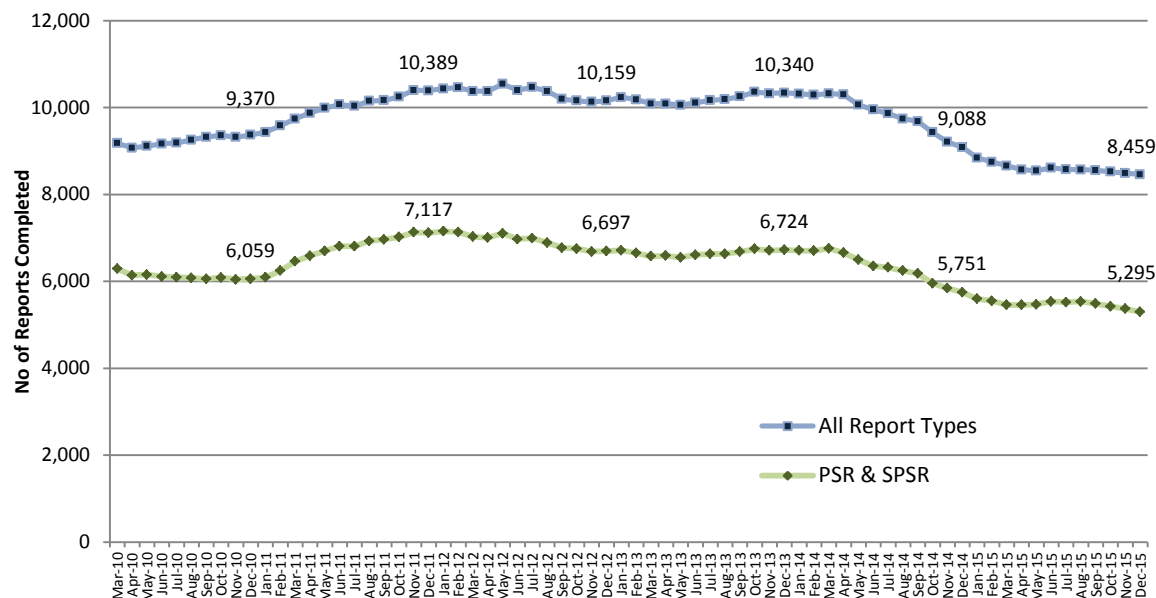
Annex 1: Definitions (Page 13)

Annex 2: People on the caseload at Point-in-time by Type of Disposal (Page 16)

Section 1: Reports

Section 1: Reports

Reports* Completed – All Types and PSR/SPSR: Rolling 12 Month Total to end December 2015



- There were 6,221 reports (all report types) completed between 1 April and 31 December 2015. This represents a decrease of 3% on the same period in 2014 (6,420).
- The number of Pre Sentence Reports (PSRs) completed has decreased by 4% from 3,531 PFYTD** to 3,406 in the current FYTD**.
- The number of Short Pre Sentence Reports (SPSRs) completed has decreased by 8% from 442 PFYTD to 405 in the current FYTD.
- The combined total of PSRs and SPSRs completed between 1 April and 31 December 2015 was 3,811. This is a 4% lower than the number completed in 2014 (3,973).
- Looking solely at Quarter 3, there has been a year-on-year decrease of 14% from 1,336 PSRs and SPSRs completed between 1 October and 31 December 2014 to 1,143 during the same period of 2015. (Q1 year-on-year increase: 6%, Q2: decrease of 4%).
- So far in 2015/16, SPSR's account for 11% of all Pre Sentence Reports (PSR & SPSR) completed.
- Looking at a longer term trend; there were 5,295 PSRs and SPSRs completed in the 12 months to the end of December 2015 which is 8% lower than in the 12 months to the end of December 2014 (5,751).

Table 1: Reports* Completed: 1 April 2015 – 31 December 2015

Type of Report	Apr 2015	May 2015	Jun 2015	Jul 2015	Aug 2015	Sep 2015	Oct 2015	Nov 2015	Dec 2015	2015/16 FYTD**	2014/15 PFYTD**	% change FYTD on PFYTD	Latest 12 Month Total Jan 2015 to Dec 2015
	Pre Sentence Report	438	442	487	342	362	344	363	360	268	3,406	3,531	-4%
Short Pre Sentence Report	37	50	44	39	35	48	55	50	47	405	442	-8%	535
Addendum Report	113	123	144	97	136	168	158	132	125	1,196	1,077	+11%	1,537
Breach / Recall / Revocation Reports	93	89	119	93	73	113	127	103	127	937	1,082	-13%	1,287
Life Sentence Commissioners / Unit Reports	0	0	0	2	0	1	0	1	3	7	25	-	10
Other***	32	20	38	33	15	31	40	35	26	270	263	+3%	330
Total	713	724	832	606	621	705	743	681	596	6,221	6,420	-3%	8,459

- Percentage change is not shown as the denominator is less than 50.

*Excludes explanatory letters to courts **FYTD=Financial Year to Date. PFYTD=Previous Financial Year to Date ***Includes Home Circumstances Report, Probation Officers Report, Unassigned Reports.

Section 2: Total Caseload [Point in Time]

Section 2: Total Caseload [Point in Time]

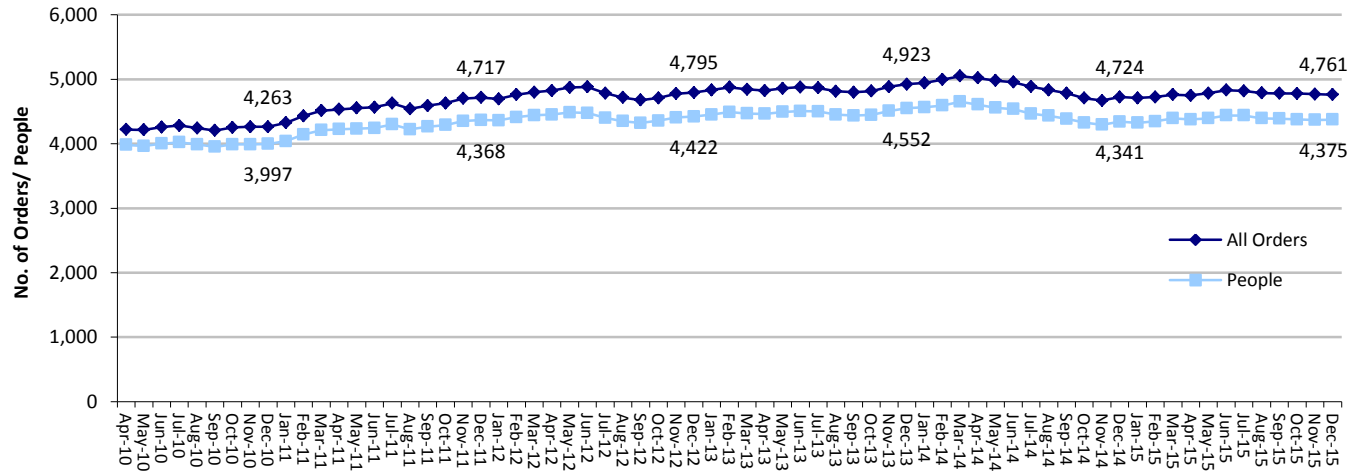
Table 2: Orders at Point in Time (end of month): April 2015 – December 2015

Type of Disposal		Apr 2015	May 2015	Jun 2015	Jul 2015	Aug 2015	Sep 2015	Oct 2015	Nov 2015	Dec 2015	Dec 2014	% change on Dec 2014
Orders	Combination Order	308	311	321	325	328	339	340	358	377	297	+27%
	Community Service Order	687	737	756	755	762	765	786	788	798	622	+28%
	Custody Probation Order	96	93	88	88	87	88	86	85	85	105	-19%
	Determinate Custodial Sentence	1,556	1,552	1,543	1,526	1,490	1,441	1,406	1,381	1,344	1,536	-13%
	Enhanced Combination Order	0	0	0	0	0	0	10	14	29	0	-
	Juvenile Justice Centre Order	22	26	25	27	28	26	27	30	30	32	-
	Probation Order	1,372	1,364	1,400	1,398	1,386	1,419	1,425	1,422	1,405	1,442	-3%
	Other Orders*	6	5	5	5	5	5	5	6	5	5	-
Licences	Life Sentence/ Licence	252	254	253	255	255	253	253	251	251	254	-1%
	Sex Offender Licence	117	116	113	113	112	112	113	112	112	122	-8%
	GB Transfer Licence	60	55	54	55	59	60	58	55	56	52	+8%
Public Protection Sentences	Extended Custodial Sentence	212	213	213	214	214	213	215	216	219	205	+7%
	Indeterminate Custodial Sentence	32	31	32	32	32	33	32	34	35	32	-
Non-statutory Sentences	Inescapable Voluntary	24	23	24	22	24	23	18	14	12	16	-
	Remand/Sentence	6	5	5	4	4	4	4	3	3	4	-
	Total Orders	4,750	4,785	4,832	4,819	4,786	4,781	4,778	4,769	4,761	4,724	+1%
	Total People	4,376	4,395	4,440	4,438	4,395	4,390	4,378	4,369	4,375	4,341	+1%

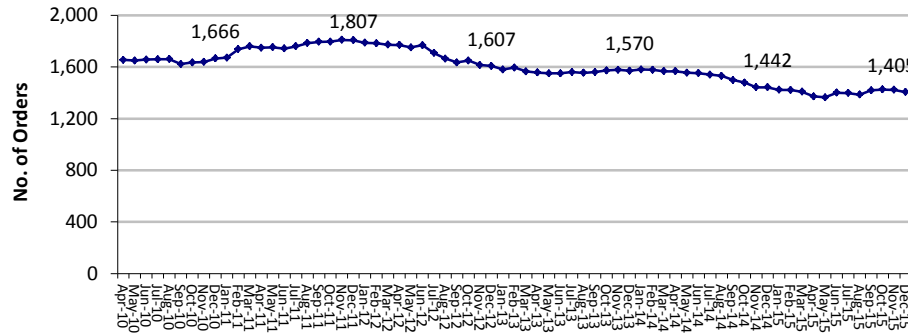
- Percentage change is not shown as the denominator is less than 50. *Includes Community Responsibility Order, Supervised Activity Order and Supervision & Treatment Order. **1,068 orders of these orders are allocated to Prison teams; of these PBNI undertakes a co-ordination role for 549 orders and acts as a supporting role for 519 orders.

- At 31 December 2015, there were 4,375 people subject to 4,761 orders on the PBNI caseload. The total number of people on the PBNI caseload is 1% higher than the number on the caseload at the end of December 2014 (4,341).
- The table above shows the volume of different order categories on the caseload at the end of each month during the first 9 months of 2015/16. At 31 December 2015, Probation Orders accounted for 30% of the caseload (1,405 orders), DCS accounted for 28% (1,344 orders) and Community Service Orders for 17% (798 orders).
- The number of Probation Orders under supervision at the end of December 2015 is 3% lower than at the end of December 2014, while the number of Community Service Orders under supervision is 28% higher.
- The number of Determinate Custodial Sentences (DCS) on the caseload is 13% lower than at the end of December 2014.
- The charts overleaf show longer term trends in the volume of the main orders on the PBNI caseload.

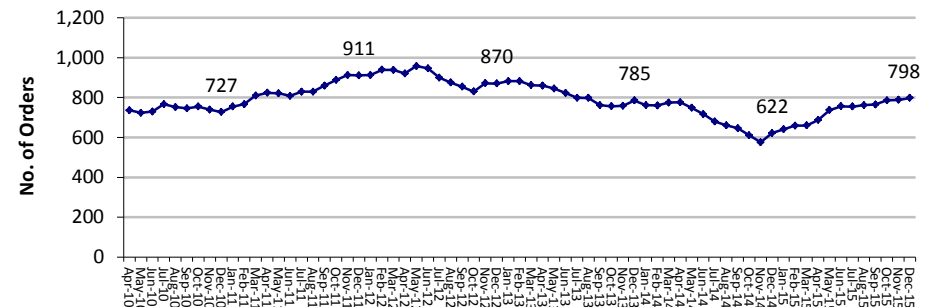
All Orders/ People - Point in time: Apr 2010 to Dec 2015



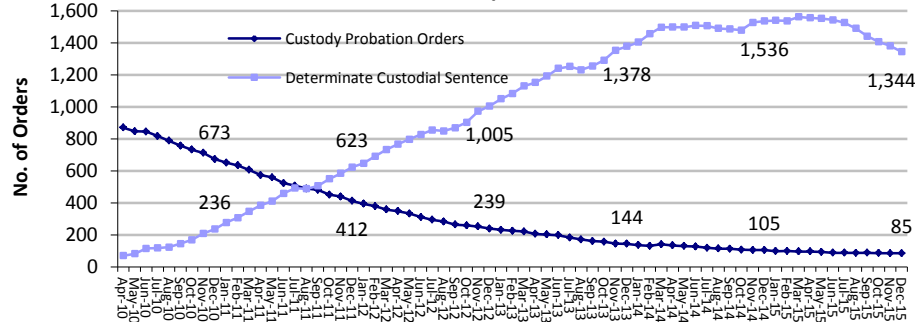
Probation Orders - Point in time: Apr 2010 to Dec 2015



Community Service Orders - Point in time: Apr 2010 to Dec 2015



Custody Probation Orders & Determinate Custodial Sentences - Point in time: Apr 2010 to Dec 2015



Combination Orders - Point in time: Apr 2010 to Dec 2015

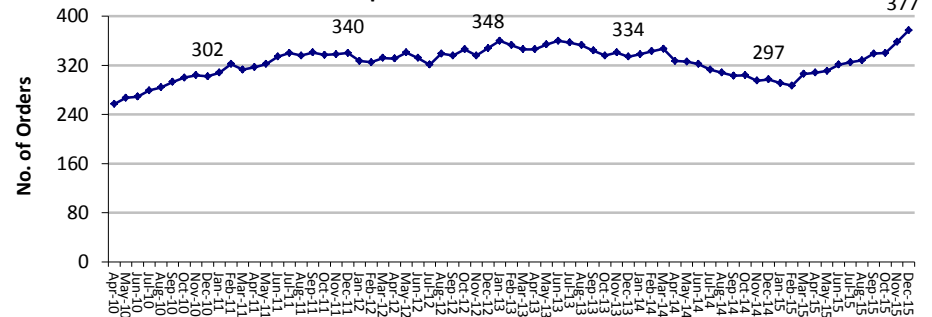


Table 3: Gender and Age profile of offenders at Point in Time (end of month): April 2015 – December 2015

Number of people		Apr 2015	May 2015	Jun 2015	Jul 2015	Aug 2015	Sep 2015	Oct 2015	Nov 2015	Dec 2015	Dec 2014	% change on Dec 2014	Dec 2015 Profile*
Gender	Female	426	440	437	429	420	423	414	414	412	404	+2%	9%
	Male	3,950	3,955	4,003	4,009	3,975	3,967	3,964	3,955	3,963	3,937	+1%	91%
	Total People	4,376	4,395	4,440	4,438	4,395	4,390	4,378	4,369	4,375	4,341	+1%	100%
Age-group	Less than 18	54	52	58	56	59	68	65	61	57	60	-5%	1%
	18-19	155	159	161	155	152	159	173	170	176	165	+7%	4%
	20-24	883	852	865	874	862	855	837	835	843	916	-8%	19%
	25-29	936	951	966	966	944	952	953	934	921	889	+4%	21%
	30-39	1,089	1,127	1,125	1,118	1,120	1,114	1,109	1,119	1,122	1,087	+3%	26%
	40-49	716	709	706	707	698	691	689	708	711	695	+2%	16%
	50-59	387	385	394	396	394	387	386	378	375	380	-1%	9%
	60 +	156	160	165	166	166	164	166	164	170	149	+14%	4%
	Total People	4,376	4,395	4,440	4,438	4,395	4,390	4,378	4,369	4,375	4,341	+1%	100%

- At 91%, males account for the vast majority of those on the caseload, with females accounting for 9%.
- Two thirds of people on the PBNI caseload at 31 December 2015 were aged 20 – 39 (66%). Over one quarter were aged 40 and over (29%).

Section 3: New Orders

Section 3: New Orders ****

Table 4: New Orders Starting during month: 1 April 2015 – 31 December 2015

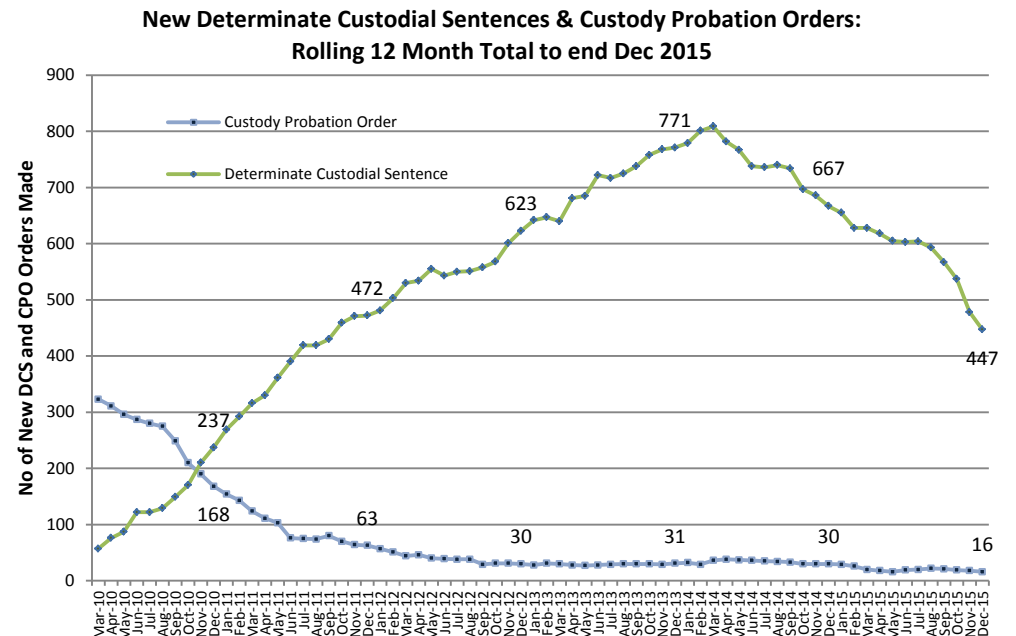
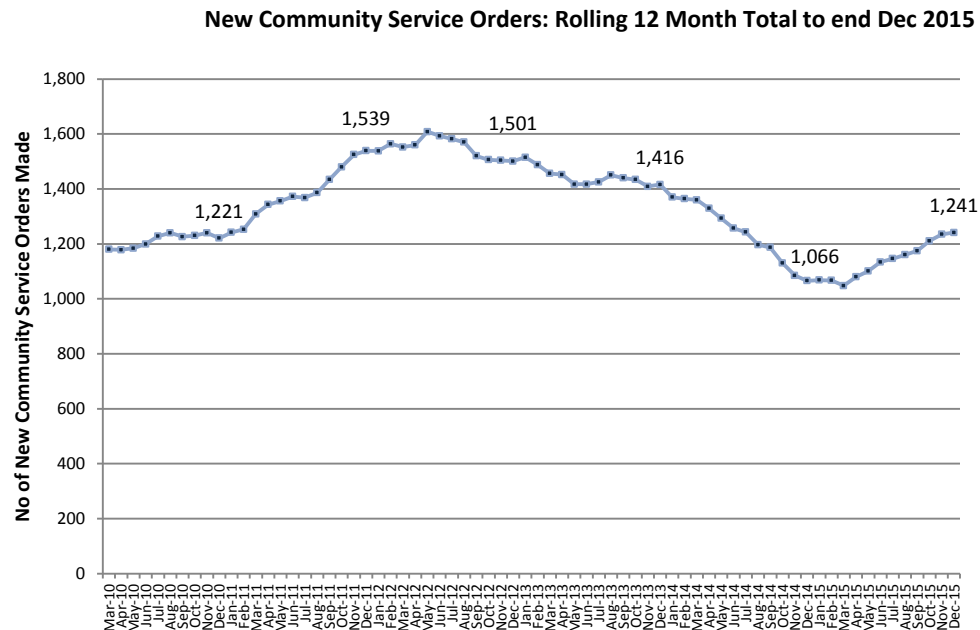
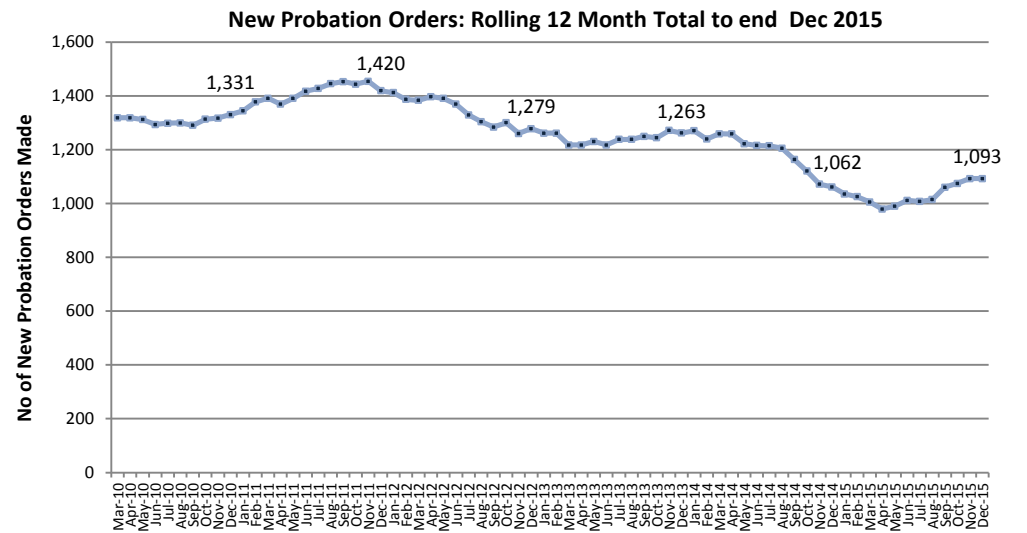
Type of Disposal		Apr 2015	May 2015	Jun 2015	Jul 2015	Aug 2015	Sep 2015	Oct 2015	Nov 2015	Dec 2015	2015/16 FYTD**	2014/15 PFYTD**	% change FYTD on PFYTD	Latest 12 Month Total Jan 2015 to Dec 2015
		Orders	Combination Order	29	28	28	27	25	31	34	40	35	277	172
	Community Service Order	123	118	113	88	92	102	106	98	91	931	738	+26%	1,241
	Custody Probation Order	1	1	5	1	2	0	0	1	1	12	16	-	16
	Determinate Custodial Sentence	42	39	58	31	9	21	16	28	8	252	433	-42%	447
	Enhanced Combination Order	0	0	0	0	0	0	10	4	15	29	0	-	29
	Juvenile Justice Centre Order	3	5	4	3	6	1	4	6	4	36	45	-	46
	Probation Order	73	101	116	78	86	112	99	93	79	837	750	+12%	1,093
	Other Orders*	0	0	0	0	0	0	0	1	0	1	6	-	2
Licences	Life/Sentence Licence	0	2	2	0	0	0	0	0	0	4	6	-	6
	Sex Offender Licence	1	0	2	1	0	1	1	0	2	8	15	-	8
	GB Licence	7	2	2	2	1	0	1	1	1	17	22	-	24
Public Protection Sentences	Extended Custodial Sentence	4	1	6	1	1	4	3	4	2	26	23	-	34
	Indeterminate Custodial Sentence	0	0	1	0	0	1	0	1	1	4	5	-	4
	Total Orders	283	297	337	232	222	273	274	277	239	2,434	2,231	+9%	3,304
	Total People***	275	292	330	228	214	266	267	273	232	2,279	2,071	+10%	3,041

- Percentage change is not shown as the denominator is less than 50.

*Includes Community Responsibility Order and Supervision & Treatment Order. **FYTD=Financial Year to Date. PFYTD=Previous Financial Year to Date. ***Individual monthly totals of people will not sum to FYTD totals as a person can receive more than one new order during the year. ****New Non-statutory cases are not included in these figures.

- Between 1 April and 31 December 2015, 2,434 new statutory orders were added to the PBNI caseload. This is 9% higher than the same period of 2014 (2,231).
- Looking at the 3 main community disposals, the number of new Probation Orders made between 1 April and 31 December 2015 is 12% higher than in the same period of 2014, the number of new Community Service Orders is 26% higher and the number of new Combination Orders is 61% higher.
- At 252, the number of new Determinate Custodial Sentences, which is the main custodial disposal on the PBNI caseload, is 42% lower than was the case during April to December 2014.
- Looking at a longer term trend; there were 3,304 new orders made in the 12 months to the end of December 2015. This is 1% higher than the total made in the 12 months to the end of December 2014 (3,260).

PBNI Caseload Statistics: Monthly Trend Information: Quarter 3 2015/16



Section 4: PBNI Victim Information Scheme

New Registrations to the PBNI Victim Information Scheme by Month: Apr 2010 to Dec 2015

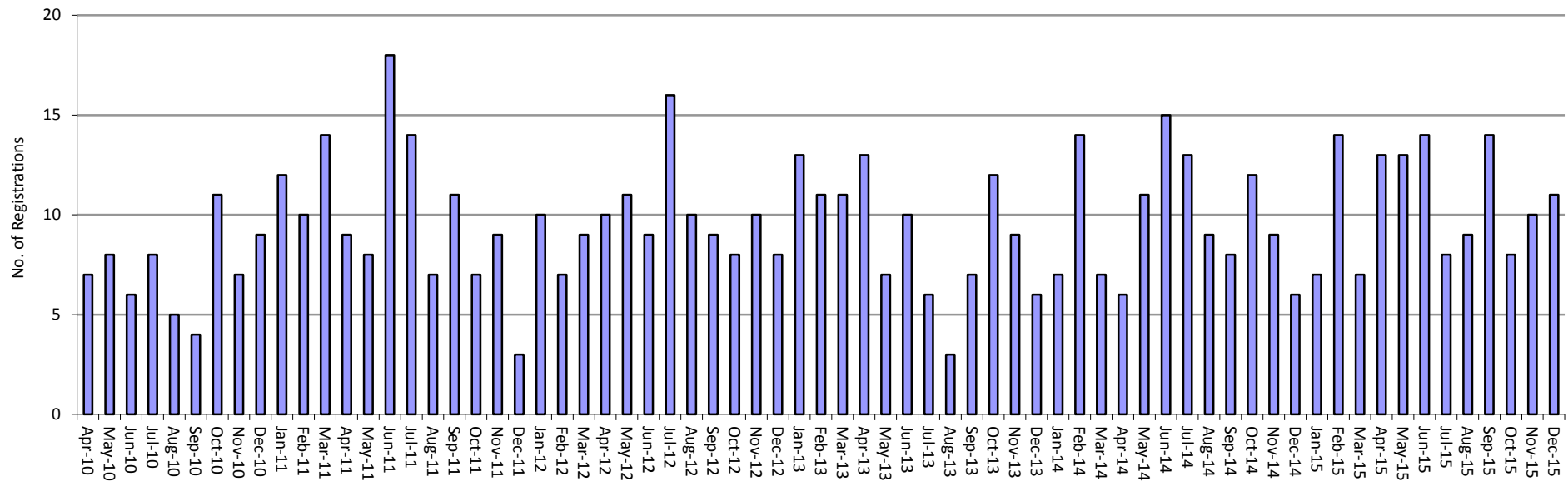


Table 5: Registrations to the PBNI Victim Information Scheme and 3-Year Pre Tariff Reports Completed by month: 1 April 2015 – 31 December 2015

	Apr 2015	May 2015	Jun 2015	Jul 2015	Aug 2015	Sep 2015	Oct 2015	Nov 2015	Dec 2015	2015/16 FYTD**	2014/15 PFYTD**	% change FYTD on PFYTD	Latest 12 Month Total Jan 2015 to Dec 2015
New Registrations	13	13	14	8	9	14	8	10	11	100	78	+28%	126
No of victim reports completed for the Parole Commissioners	1	1	0	0	0	1	0	0	0	3	19	-	4

- Percentage change is not shown as the denominator is less than 50.

* Please note that Victim Registrations are person based, each person may have multiple reports across different months.

- At the end of December 2015 there were 251 victims registered on the PBNI Victim Information Scheme.
- Between 1 April and 31 December 2015, there were 100 new registrations to the PBNI Victim Information Scheme.

Annex 1: Definitions

Annex 1: Definitions

A **Combination Order** is a sentence that combines a Probation Order and a Community Service Order. The period of Probation supervision can last from 1 to 3 years. The Community Service part of the Order can range from 40 to 100 hours and must be completed as instructed.

A **Community Service Order** requires an offender to do unpaid work in the community. It may be given to someone 16 or over if the offender consents, and lasts between 40 hours and 240 hours and must be completed within 12 months.

A **Custody Probation Order** requires an offender to serve a period of imprisonment followed by a period of supervision in the community (the period of supervision will be 1 to 3 years commencing on date of release), and is unique to Northern Ireland. This order cannot be made unless the offender consents. Although Custody Probation Orders remain on the statute books, Determinate Custodial Sentences were made available from 1 April 2009.

A **Determinate Custodial Sentence** requires an offender to serve a period of imprisonment followed by a period of supervision in the community. The court will specify the length of both custody and community supervision at sentencing. This will be the standard determinate sentence for all offenders, and has been available to the courts from 1 April 2009.

An **Enhanced Combination Order** is an intensive pilot project with a focus on rehabilitation, reparation, restorative practice, and desistance, and has been available to two of the court divisions from October 2015. The period of Probation supervision can last from 1 to 3 years. The Community Service part of the Order can range from 40 to 100 hours and must be carried out at an accelerated pace.

An **Extended Custodial Sentence** may be given at court if the offender has been convicted on indictment of a specified offence, where a life sentence or Indeterminate Custodial Sentence is not appropriate. The court must be of the opinion that there is a significant risk that the offender will re-offend and that such re-offending is likely to cause serious harm to members of the public. The court will specify the maximum length of custody and length of time to be served on licence in the community. Halfway through the custodial element of their sentence offenders may apply to the Parole Commissioners for early release.

A **GB Transfer Licence** – any individual subject to licence may, given the agreement of the Probation Board for Northern Ireland, transfer to Northern Ireland from another jurisdiction in Great Britain.

An **Indeterminate Custodial Sentence** may be given at court if the offender has been convicted on indictment of a specified offence, where a life sentence is not appropriate but an Extended Custodial Sentence is not sufficient. The court must be of the opinion that there is a significant risk that the offender will re-offend and that such re-offending is likely to cause serious harm to members of the public. The court will specify the maximum length of custody that an offender must serve before being released on licence into the community. Offenders may remain on licence for the rest of their natural lives. On reaching a tariff date, offenders may apply to the parole commissioners for early release.

Inescapable Voluntary refers to those offenders who continue to be supervised by PBNI on a voluntary basis following the end of their sentence, usually for the purposes of completing programmes. These are not statutory orders.

PBNI Caseload Statistics: Monthly Trend Information: Quarter 3 2015/16

A **Juvenile Justice Centre Order** requires a young offender (aged between 10 and 17 years) to spend time, normally three months, in a Juvenile Justice Centre and then be supervised in the community by a probation officer, normally for three months.

A **Life Sentence Licence** means an offender serving a life sentence will be released from custody on licence. An individual must comply with the conditions of his licence in order to remain in the community and not be returned to custody.

A **Probation Order** can last between 6 months and 3 years, and puts the offender under the supervision of a Probation Officer for that period. The order may have extra requirements. Offender consent is required.

Remand/Sentence - refers to persons who are remanded in custody awaiting sentence or who are subject to a custodial sentence not involving PBNI supervision on release with whom PBNI works in order to assess individual risks and needs.

A **Sex Offender Licence** – under article 26 of the Criminal Justice (Northern Ireland) Order 1996 makes provision for all offenders convicted of a sexual offence to be released on licence under the supervision of a Probation Officer.

A **Supervision and Treatment Order** requires the specified person to be under supervision for a period of not more than 2 years; and to submit, during that period to treatment under the direction of a medical practitioner with a view to the improvement of his mental condition.

Annex 2: People on the Caseload at Point-in-time by Type of Disposal

The table below is being considered as a replacement to Table 2 in this report; as such any comment or feedback from key users is welcome. This change is being considered as it is felt that people based, rather than order based figures may be easier to understand.

Table 6: People by Disposal Type at Point in Time (end of month): April 2015 – December 2015

Type of Disposal	Apr 2015	May 2015	Jun 2015	Jul 2015	Aug 2015	Sep 2015	Oct 2015	Nov 2015	Dec 2015	Dec 2014	% change on Dec 2014	
Orders	Combination Order	306	309	320	324	327	336	337	354	372	293	+27%
	Community Service Order	666	714	732	733	736	737	758	754	764	603	+27%
	Custody Probation Order	95	92	87	87	86	87	85	84	84	104	-19%
	Determinate Custodial Sentence	1,425	1,419	1,417	1,409	1,373	1,337	1,307	1,287	1,256	1,409	-11%
	Enhanced Combination Order	0	0	0	0	0	0	10	14	29	0	-
	Juvenile Justice Centre Order	16	21	20	20	22	22	23	25	24	23	-
	Probation Order	1,323	1,306	1,340	1,344	1,327	1,353	1,358	1,356	1,348	1,387	-3%
Other Orders*	5	4	4	4	4	4	4	5	4	4	-	
Licences	Life Sentence/ Licence	252	254	253	255	255	253	253	251	251	254	-1%
	Sex Offender Licence	113	112	109	110	109	109	110	109	109	117	-7%
	GB Transfer Licence	60	55	54	55	59	60	58	55	56	52	+8%
Public Protection Sentences	Extended Custodial Sentence	198	199	199	200	200	199	200	202	205	192	+7%
	Indeterminate Custodial Sentence	30	29	30	30	30	31	30	32	33	30	-
Non-statutory Sentences	Inescapable Voluntary	24	23	24	22	24	23	18	14	12	16	-
	Remand/Sentence	6	5	5	4	4	4	4	3	3	4	-
	Total People**	4,376	4,395	4,440	4,438	4,395	4,390	4,378	4,369	4,375	4,341	+1%

- Percentage change is not shown as the denominator is less than 50.

*Includes Community Responsibility Order, Supervised Activity Order and Supervision & Treatment Order. **Individual disposal figures will not sum to the total people figure, as a person can receive more than one type of disposal.

- The table above shows the number of people subject to different disposal categories at the end of each month during the first 9 months of 2015/16. At 31 December 2015, 31% of the people on the caseload were subject to Probation Orders (1,348 people), 29% were on Determinate Custodial Sentences (1,256 people) and 17% on Community Service Orders (764 people).
- The number of people on Probation Orders under supervision at the end of December 2015 is slightly lower (-3%) than at the end of December 2014, while the number of people subject to Community Service Orders under supervision is 27% higher.
- The number of people on Determinate Custodial Sentences (DCS) on the caseload is 11% lower than at the end of December 2014 and the number of people on Extended Custodial Sentences is 7% higher.