

# PBNI Caseload Statistics

Quarter 1 2015/16

Report based on information from the PBNI Case Management System on 30<sup>th</sup> June 2015



### Introduction

This report provides provisional statistics on the PBNI caseload by month for 2015/16. Throughout the report comparisons are made between the current and previous financial year. For those statistics on the number of court reports completed, the number of new orders made requiring PBNI supervision and victims information scheme registrations, comparisons are between the financial year to date (FYTD) and the previous financial year to date (PFYTD) (i.e. 1 April 2015 – 30 June 2015 compared with 1 April 2014 – 30 June 2014). However for statistics on the total caseload (point in time), comparisons are made with the position at the same point in the previous financial year (i.e. the position on 30 June 2015 compared with the position on 30 June 2014).

The data presented in this publication is drawn from PBNI's case management system (PIMS). Although care is taken when processing and analysing the data, the data is subject to inaccuracies inherent in an administrative data recording system. While figures have been checked as far as practicable, they should be regarded as approximate and not necessarily accurate to the last whole number shown in the tables. Where percentages have been presented they are subject to rounding.

We welcome comment and feedback on these statistics. If you would like to forward your views contact PBNI Statistics & Research Branch at 02890 262487, or e-mail: [Niall.O'Neill@pbni.gsi.gov.uk](mailto:Niall.O'Neill@pbni.gsi.gov.uk).

### Key Points

#### Section 1: Reports (Page 2)

- There were 2,275 reports (all report types) completed between 1 April and 30 June 2015, slightly lower (-2%) than the same period in 2014 (2,312).
- The combined total of Pre Sentence Reports (PSR) and Short Pre Sentence Reports (SPSR) completed between 1 April and 30 June 2015 was 1,496. This is 6% higher than in the same period of 2014 (1,418).
- Looking at a longer term trend; there were 5,535 PSRs and SPSRs completed in the 12 months to the end of June 2015 which is 13% lower than in the 12 months to the end of June 2014 (6,354).
- The majority of PSRs and SPSRs completed by PBNI are provided to Magistrates Courts (73%) with one in four (24%) provided to Crown Court. Compared with April to June 2014, the number of PSRs and SPSRs completed for Crown Court is broadly comparable (352 in Q1 2014/15 to 354 in Q1 2015/16). The number of PSRs and SPSRs provided to Magistrates Courts has increased by 7% (1,019 in Q1 2014/15 to 1,090 in Q1 2015/16).

#### Section 2: Total Caseload [Point in Time] (Page 4)

- At 30 June 2015, there were 4,440 people subject to 4,832 orders on the PBNI caseload. Just under three-quarters of people (3,364, 76%) were supervised by PBNI teams in the community, with the remainder in custody (1,076, 24%).
- The total number of people on the caseload at 30 June 2015 is 2% lower than at the end of June 2014 (4,538).
- The number of Probation Orders under supervision at 30 June 2015 is 10% lower than at the end of June 2014, and the number of Community Service Orders is 5% higher.
- The number of Determinate Custodial Sentences (DCS) on the caseload is 2% higher than at the end of June 2014, and the number of Extended Custodial Sentences is 9% higher.

#### Section 3: New Orders (Page 8)

- Between 1 April and 30 June 2015, 895 new statutory orders were added to the PBNI caseload. This is 7% higher than in the same period of 2014 (835).
- Looking at a longer term trend; there were 3,161 new orders made in the 12 months to the end of June 2015. This is 14% lower than the total made in the 12 months to the end of June 2014 (3,695).

#### Section 4: Victims Information Scheme (Page 11)

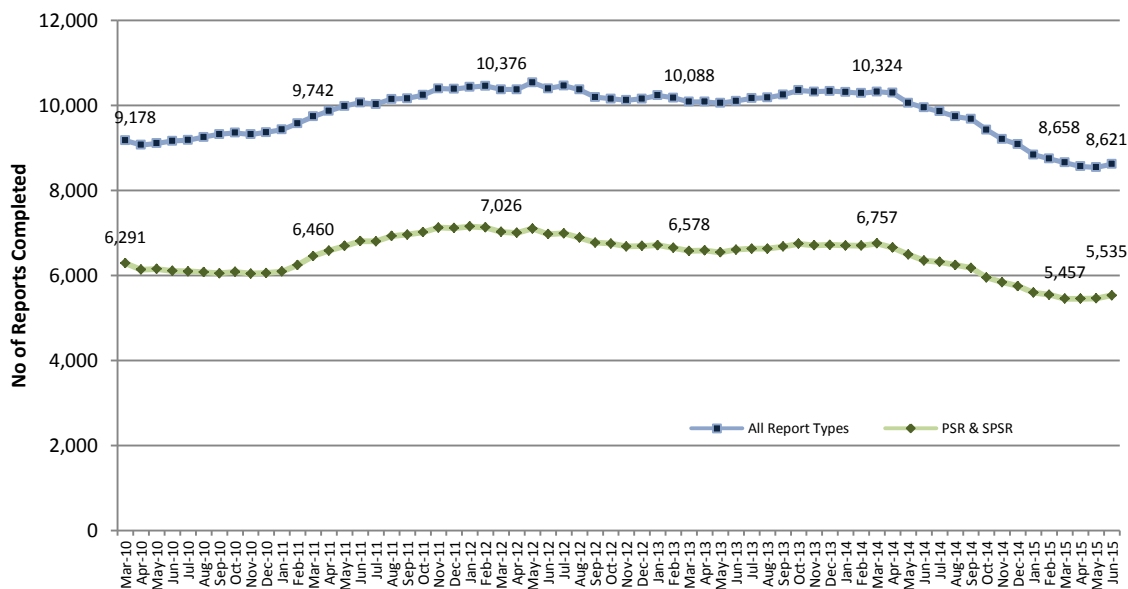
- There were 40 new registrations to the PBNI Victims Information Scheme in the first three months of 2015/16.

#### Annex 1: Definitions (Page 13)

## **Section 1: Reports**

**Section 1: Reports**

**Reports\* Completed – All Types and PSR/SPSR: Rolling 12 Month Total to end June 2015**



- There were 2,275 reports (all report types) completed between 1 April and 30 June 2015. This is slightly lower (-2%) than the same period in 2014 (2,312).
- The number of Pre Sentence Reports (PSRs) completed has increased by 9% from 1,257 PFYTD\*\* to 1,367 in the current FYTD\*\*.
- The number of Short Pre Sentence Reports (SPSRs) completed has decreased by 20% from 161 PFYTD to 129 in the current FYTD.
- The combined total of PSRs and SPSRs completed between 1 April and 30 June 2015 was 1,496. This is 6% higher than in the same period of 2014 (1,418).
- So far in 2015/16, SPSR's account for 9% of all Pre Sentence Reports (PSR & SPSR) completed.
- Looking at a longer term trend; there were 5,535 PSRs and SPSRs completed in the 12 months to the end of June 2015 which is 13% lower than in the 12 months to the end of June 2014 (6,354).

**Table 1: Reports\* Completed: 1 April 2015 – 30 June 2015**

Type of Report	Apr 2015	May 2015	Jun 2015	2015/16	2014/15	% change FYTD on PFYTD	Latest 12 Month Total
				FYTD**	PFYTD**		Jul 2014 to Jun 2015
Pre Sentence Report	437	440	490	1,367	1,257	+9%	4,995
Short Pre Sentence Report	36	49	44	129	161	-20%	540
Addendum Report	113	123	144	380	369	+3%	1,429
Breach / Recall / Revocation Reports	95	94	129	318	416	-24%	1,334
Life Sentence Commissioners / Unit Reports	0	0	0	0	17	-	11
Other***	31	19	31	81	92	-12%	312
<b>Total</b>	<b>712</b>	<b>725</b>	<b>838</b>	<b>2,275</b>	<b>2,312</b>	<b>-2%</b>	<b>8,621</b>

- Percentage change is not shown as the denominator is less than 50.

\*Excludes explanatory letters to courts \*\*FYTD=Financial Year to Date. PFYTD=Previous Financial Year to Date \*\*\*Includes Home Circumstances Report, Probation Officers Report, Unassigned Reports.

## **Section 2: Total Caseload [Point in Time]**

Section 2: Total Caseload [Point in Time]

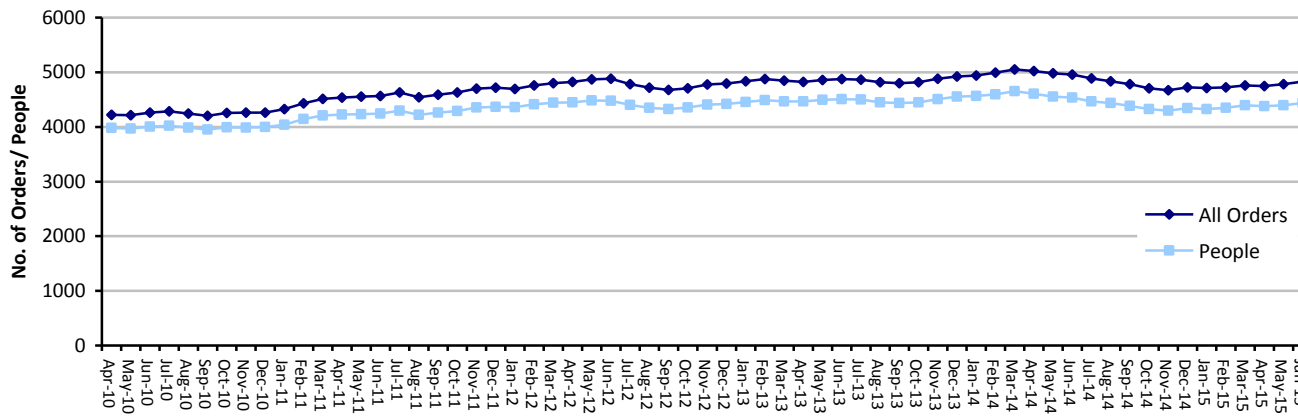
Table 2: Orders at Point in Time (end of month): April 2015 – June 2015

Type of Supervision		Apr 2015	May 2015	Jun 2015	Jun 2014	% change on Jun 2014
<b>Orders</b>	Combination Order	308	311	321	322	0%
	Community Service Order	687	737	756	717	+5%
	Custody Probation Order	96	93	88	127	-31%
	Determinate Custodial Sentence	1,556	1,552	1,543	1,508	+2%
	Juvenile Justice Centre Order	22	26	25	53	-53%
	Probation Order	1,372	1,364	1,400	1,552	-10%
	Other Orders*	6	5	5	6	-
<b>Licences</b>	Life Sentence/ Licence	252	254	253	257	-2%
	Sex Offender Licence	117	116	113	121	-7%
	GB Transfer Licence	60	55	54	41	-
<b>Public Protection Sentences</b>	Extended Custodial Sentence	212	213	213	196	+9%
	Indeterminate Custodial Sentence	32	31	32	31	-
<b>Non-statutory Sentences</b>	Inescapable Voluntary	24	23	24	16	-
	Remand/Sentence	6	5	5	9	-
	<b>Total Orders</b>	<b>4,750</b>	<b>4,785</b>	<b>4,832</b>	<b>4,956</b>	<b>-3%</b>
	<b>Total People</b>	<b>4,376</b>	<b>4,395</b>	<b>4,440</b>	<b>4,538</b>	<b>-2%</b>

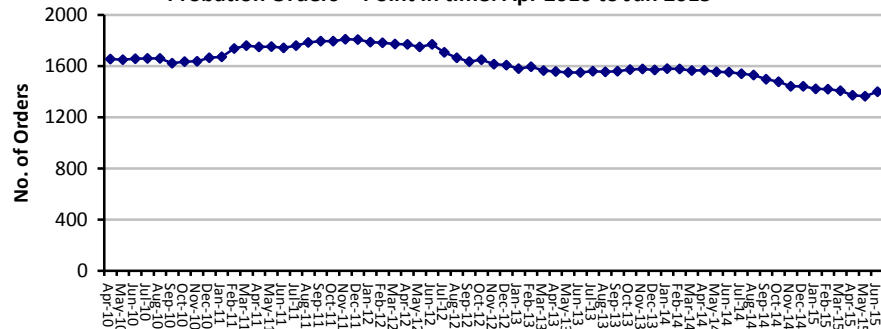
- Percentage change is not shown as the denominator is less than 50. \* Includes Community Responsibility Order, Supervised Activity Order and Supervision & Treatment Order

- At 30 June 2015, there were 4,440 people subject to 4,832 orders on the PBNI caseload. The total number of people on the PBNI caseload is 2% lower than at the end of June 2014 (4,538).
- The table above shows the volume of different order categories on the caseload at the end of each month during the first quarter of 2015/16. At 30 June 2015, DCS accounted for 32% of the caseload (1,543 orders), Probation Orders accounted for 29% (1,400 orders) and Community Service Orders for 16% (756 orders).
- The number of Probation Orders under supervision at the end of June 2015 is 10% lower than at the end of June 2014, and the number of Community Service Orders under supervision is 5% higher.
- The number of DCS on the caseload is slightly higher (2%) than at the end of June 2014 and the number of ECS is 9% higher.
- The charts overleaf show longer term trends in the volume of the main orders on the PBNI caseload.

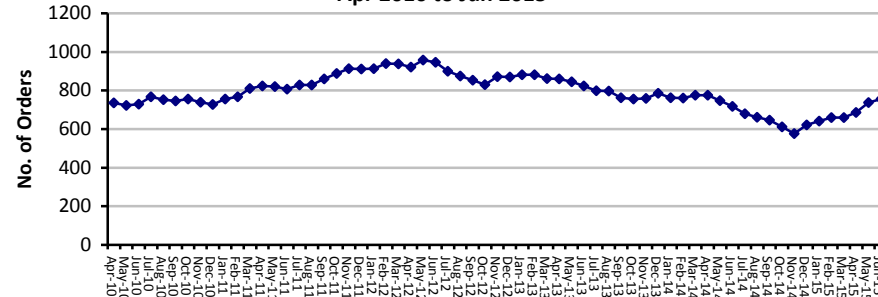
All Orders/ People - Point in time: Apr 2010 to Jun 2015



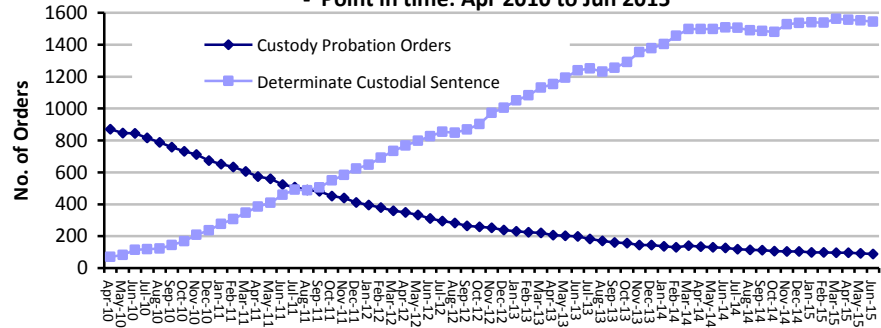
Probation Orders - Point in time: Apr 2010 to Jun 2015



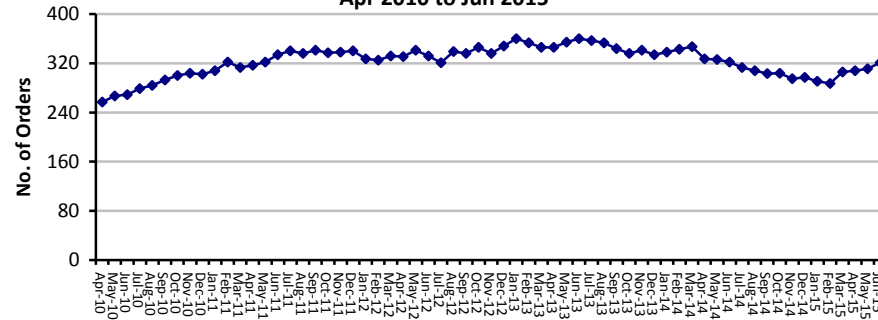
Community Service Orders - Point in time: Apr 2010 to Jun 2015



Custody Probation Orders & Determinate Custodial Sentences - Point in time: Apr 2010 to Jun 2015



Combination Orders - Point in time: Apr 2010 to Jun 2015



**Table 3: Gender and Age profile of offenders at Point in Time (end of month): April 2015 – June 2015**

Number of people		Apr 2015	May 2015	Jun 2015	Jun 2014	% change on Jun 2014	Jun 2015 Profile*
<b>Gender</b>	Female	426	440	437	420	+4%	10%
	Male	3,950	3,955	4,003	4,118	-3%	90%
	<b>Total People</b>	<b>4,376</b>	<b>4,395</b>	<b>4,440</b>	<b>4,538</b>	<b>-2%</b>	<b>100%</b>
<b>Age-group</b>	Less than 18	54	52	58	77	-25%	1%
	18-19	155	159	161	193	-17%	4%
	20-24	883	852	865	1,020	-15%	19%
	25-29	936	951	966	910	+6%	22%
	30-39	1,089	1,127	1,125	1,094	+3%	25%
	40-49	716	709	706	692	+2%	16%
	50-59	387	385	394	391	+1%	9%
	60 +	156	160	165	161	+2%	4%
	<b>Total People</b>	<b>4,376</b>	<b>4,395</b>	<b>4,440</b>	<b>4,538</b>	<b>-2%</b>	<b>100%</b>

- At 90%, males account for the vast majority of those on the PBNI caseload, with females accounting for 10%.
- Two thirds of people on the PBNI caseload at 30 June 2015 were aged 20 – 39 (67%). Just over one quarter were aged 40 and over (28%).



## **Section 3: New Orders**

**Section 3: New Orders \*\*\*\***

**Table 4: New Orders Starting during month: 1 April 2015 – 30 June 2015**

Type of Supervision		Apr 2015	May 2015	Jun 2015	2015/16	2014/15	% change	Latest 12 Month Total
					FYTD**	PFYTD**	FYTD on PFYTD	Jul 2014 to Jun 2015
<b>Orders</b>	Combination Order	29	28	27	84	60	+40%	273
	Community Service Order	123	117	112	352	268	+31%	1,132
	Custody Probation Order	1	1	2	4	8	-	16
	Determinate Custodial Sentence	41	39	54	134	164	-18%	598
	Juvenile Justice Centre Order	3	5	4	12	21	-	46
	Probation Order	72	101	116	289	284	+2%	1,011
	Other Orders*	0	0	0	0	3	-	4
<b>Licences</b>	Life/Sentence Licence	0	2	0	2	6	-	4
	Sex Offender Licence	1	0	0	1	6	-	10
	GB Licence	2	2	2	6	2	-	33
<b>Public Protection Sentences</b>	Extended Custodial Sentence	4	1	5	10	11	-	30
	Indeterminate Custodial Sentence	0	0	1	1	2	-	4
<b>Total Orders</b>		<b>276</b>	<b>296</b>	<b>323</b>	<b>895</b>	<b>835</b>	<b>+7%</b>	<b>3,161</b>
<b>Total People***</b>		<b>268</b>	<b>291</b>	<b>317</b>	<b>868</b>	<b>796</b>	<b>+9%</b>	<b>2,902</b>

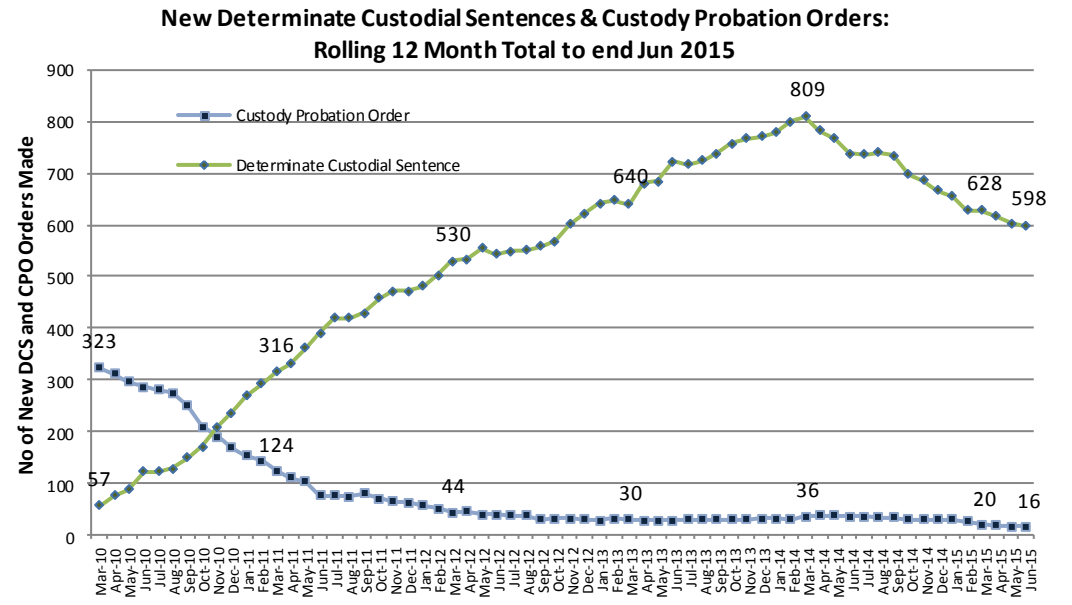
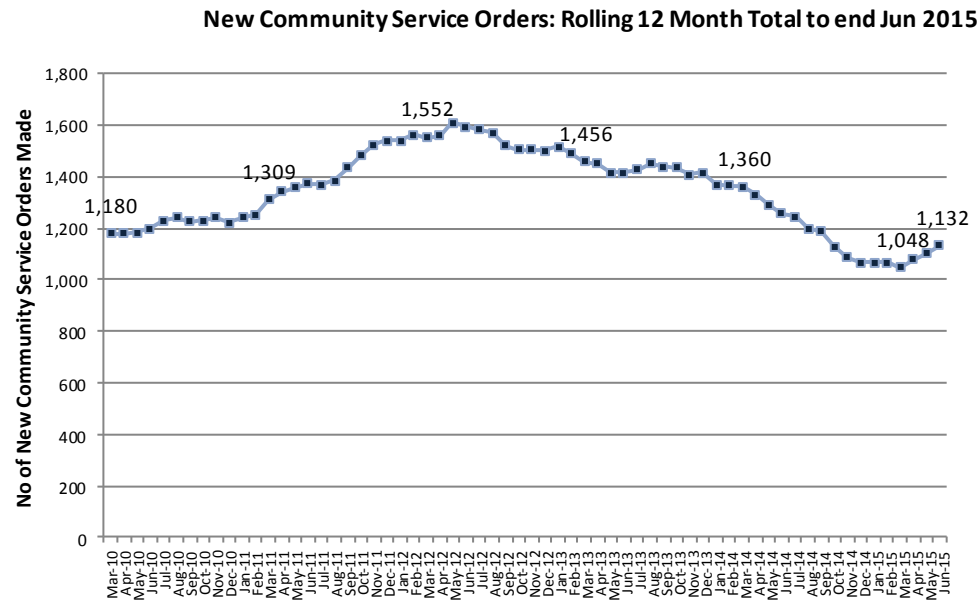
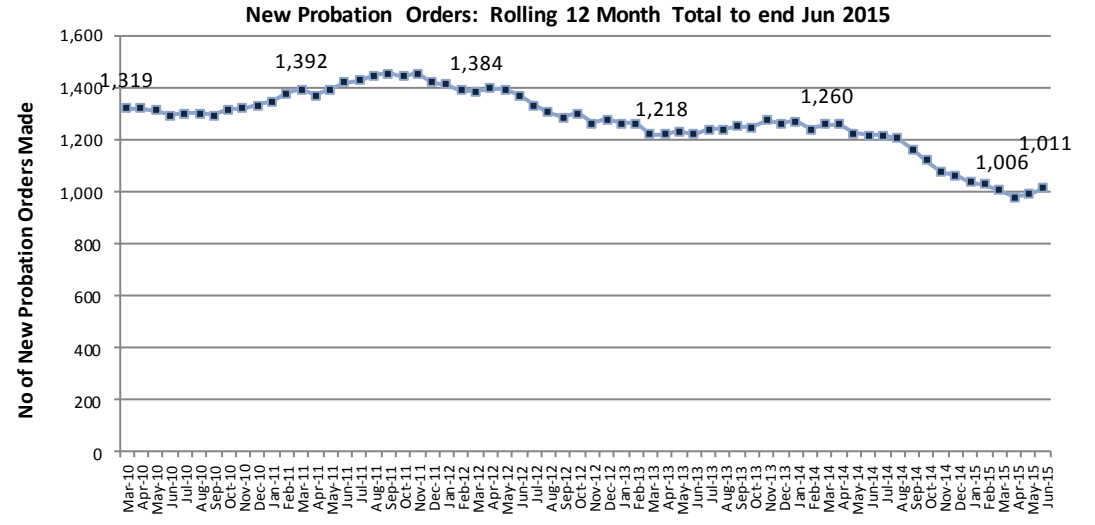
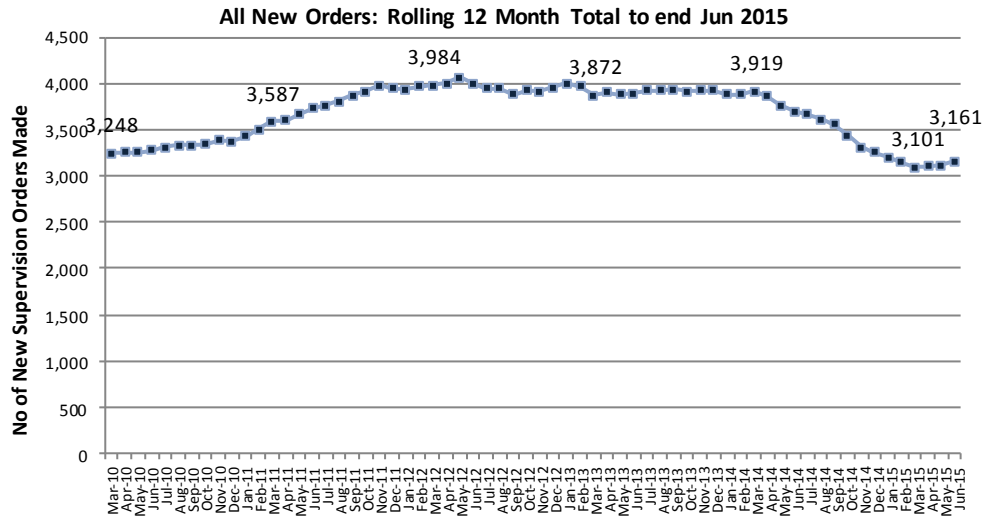
- Percentage change is not shown as the denominator is less than 50.

\*Includes Community Responsibility Order and Supervision & Treatment Order. \*\*FYTD=Financial Year to Date. PFYTD=Previous Financial Year to Date

\*\*\*Individual monthly totals of people will not sum to FYTD totals as a person can receive more than one new order during the year. \*\*\*\*New Non-statutory cases are not included in these figures.

- Between 1 April and 30 June 2015, 895 new statutory orders were added to the PBNI caseload. This is 7% higher than in the same period of 2014 (835).
- Looking at the 3 main community disposals, the number of new Probation Orders made between 1 April and 30 June 2015 is 2% higher than in the same period of 2014, the number of new Community Service Orders is 31% higher and the number of new Combination Orders is 40% higher.
- At 134, the number of new Determinate Custodial Sentences, which is the main custodial disposal on the PBNI caseload, is 18% lower than was the case during April to June 2014.
- Looking at a longer term trend; there were 3,161 added to the PBNI caseload in the 12 months to the end of June 2015. This is 14% lower than the total made in the 12 months to the end of June 2014 (3,695).
-

PBNI Caseload Statistics: Monthly Trend Information: Quarter 1 2015/16



## **Section 4: PBNI Victim Information Scheme**

New Registrations to the PBNI Victim Information Scheme by Month: Apr 2010 to Jun 2015

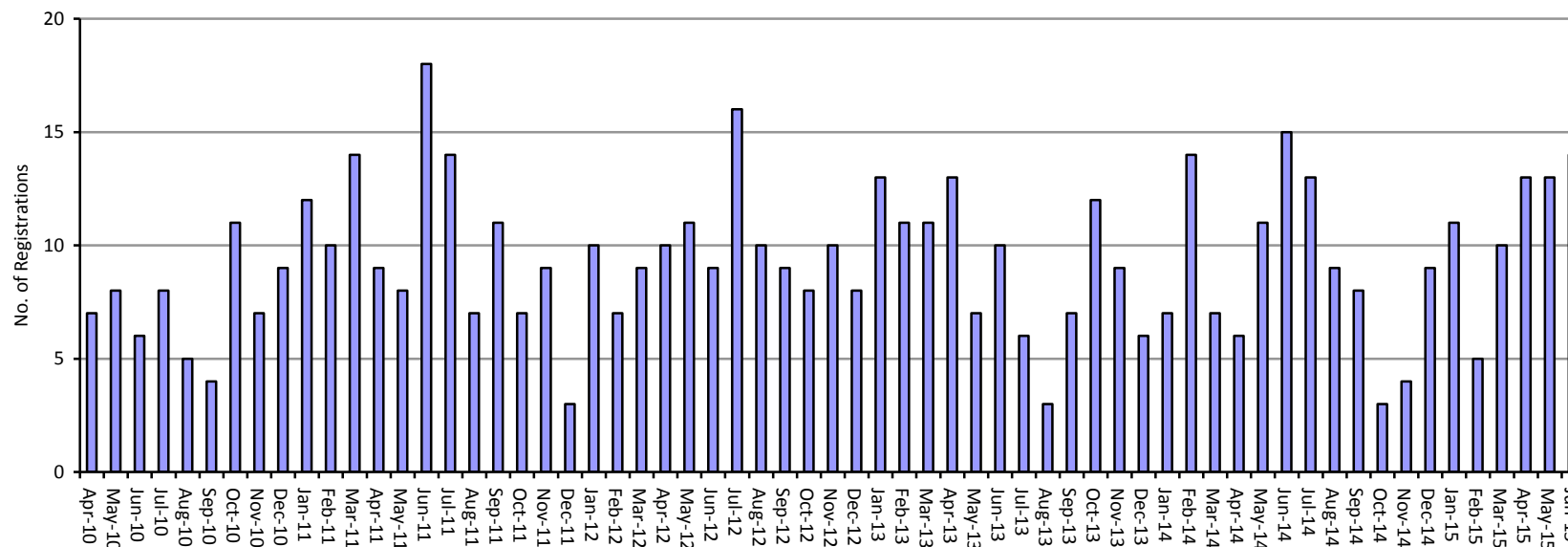


Table 5: Registrations to the PBNI Victim Information Scheme and 3-Year Pre Tariff Reports Completed by month: 1 April 2015 – 30 June 2015

Type of Report	Apr 2015	May 2015	Jun 2015	2015/16	2014/15	% change	Latest 12 Month Total
				FYTD**	PFYTD**	FYTD on PFYTD	Jul 2014 to Jun 2015
New Registrations	13	13	14	40	32	-	112
No of victim reports completed for the Parole Commissioners	1	1	0	2	7	-	15

- Percentage change is not shown as the denominator is less than 50.

\* Please note that Victim Registrations are person based, each person may have multiple reports across different months.

- At the end of June 2015 there were 235 victims registered on the PBNI Victim Information Scheme.
- Between 1 April and 30 June 2015, there were 40 new registrations to the PBNI Victim Information Scheme.

## **Annex 1: Definitions**

## Annex 1: Definitions

A **Combination Order** is a sentence that combines a Probation Order and a Community Service Order. The period of Probation supervision can last from 1 to 3 years. The Community Service part of the Order can range from 40 to 100 hours and must be completed as instructed.

A **Community Service Order** requires an offender to do unpaid work in the community. It may be given to someone 16 or over if the offender consents, and lasts between 40 hours and 240 hours and must be completed within 12 months.

A **Custody Probation Order** requires an offender to serve a period of imprisonment followed by a period of supervision in the community (the period of supervision will be 1 to 3 years commencing on date of release), and is unique to Northern Ireland. This order cannot be made unless the offender consents. Although Custody Probation Orders remain on the statute books, Determinate Custodial Sentences were made available from 1 April 2009.

A **Determinate Custodial Sentence** requires an offender to serve a period of imprisonment followed by a period of supervision in the community. The court will specify the length of both custody and community supervision at sentencing. This will be the standard determinate sentence for all offenders, and has been available to the courts from 1 April 2009.

An **Extended Custodial Sentence** may be given at court if the offender has been convicted on indictment of a specified offence, where a life sentence or Indeterminate Custodial Sentence is not appropriate. The court must be of the opinion that there is a significant risk that the offender will re-offend and that such re-offending is likely to cause serious harm to members of the public. The court will specify the maximum length of custody and length of time to be served on licence in the community. Halfway through the custodial element of their sentence offenders may apply to the Parole Commissioners for early release.

A **GB Transfer Licence** – any individual subject to licence may, given the agreement of the Probation Board for Northern Ireland, transfer to Northern Ireland from another jurisdiction in Great Britain.

An **Indeterminate Custodial Sentence** may be given at court if the offender has been convicted on indictment of a specified offence, where a life sentence is not appropriate but an Extended Custodial Sentence is not sufficient. The court must be of the opinion that there is a significant risk that the offender will re-offend and that such re-offending is likely to cause serious harm to members of the public. The court will specify the maximum length of custody that an offender must serve before being released on licence into the community. Offenders may remain on licence for the rest of their natural lives. On reaching a tariff date, offenders may apply to the parole commissioners for early release.

**Inescapable Voluntary** refers to those offenders who continue to be supervised by PBNI on a voluntary basis following the end of their sentence, usually for the purposes of completing programmes. These are not statutory orders.

A **Juvenile Justice Centre Order** requires a young offender (aged between 10 and 17 years) to spend time, normally three months, in a Juvenile Justice Centre and then be supervised in the community by a probation officer, normally for three months.

A **Life Sentence Licence** means an offender serving a life sentence will be released from custody on licence. An individual must comply with the conditions of his licence in order to remain in the community and not be returned to custody.

A **Probation Order** can last between 6 months and 3 years, and puts the offender under the supervision of a Probation Officer for that period. The order may have extra requirements. Offender consent is required.

**Remand/Sentence** - refers to persons who are remanded in custody awaiting sentence or who are subject to a custodial sentence not involving PBNI supervision on release with whom PBNI works in order to assess individual risks and needs.

A **Sex Offender Licence** – under article 26 of the Criminal Justice (Northern Ireland) Order 1996 makes provision for all offenders convicted of a sexual offence to be released on licence under the supervision of a Probation Officer.

A **Supervision and Treatment Order** requires the specified person to be under supervision for a period of not more than 2 years; and to submit, during that period to treatment under the direction of a medical practitioner with a view to the improvement of his mental condition.