

Title: Cattle for beef production on NI farms July 2023

Source: Livestock and Meat Commission/APHIS data

Date: 03 August 2023

Contact: bulletin@lmcni.com

Website: www.lmcni.com

Market Information Department



Total cattle for beef production

Age (months)	2021	2022	2023	2022/2023	2021/2023
0-6	249,991	244,256	243,369	-0.4%	-2.6%
6-12	151,383	152,440	153,395	+0.6%	+1.3%
12-18	242,854	240,092	234,069	-2.5%	-3.6%
18-24	111,044	111,686	114,428	+2.5%	+3.0%
24-30	121,863	119,461	116,678	-2.3%	-4.3%
30 +	285,021	283,525	276,326	-2.5%	-3.1%

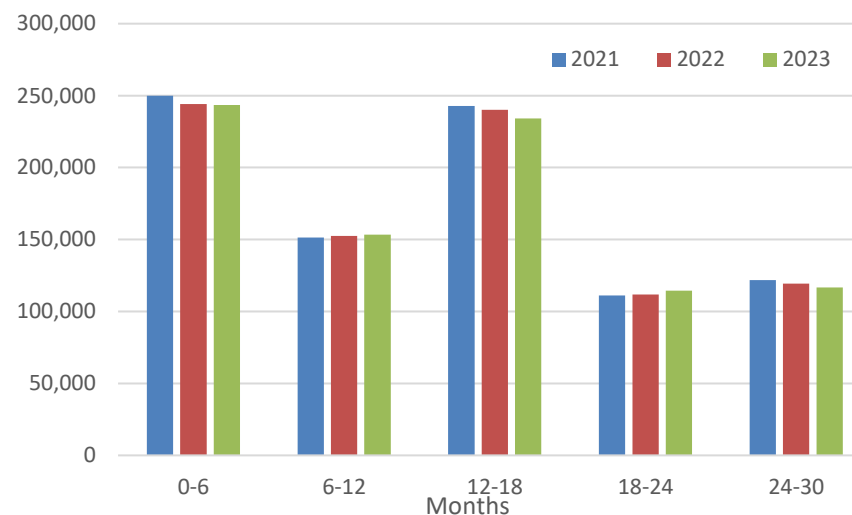
Beef sired male cattle for beef production

Age (months)	2021	2022	2023	2022/2023	2021/2023
0-6	117,146	116,061	117,256	+1.0%	+0.1%
6-12	63,801	66,342	69,055	+4.1%	+8.2%
12-18	111,380	110,287	108,607	-1.5%	-2.5%
18-24	44,514	44,432	46,775	+5.3%	+5.1%
24-30	43,793	42,245	43,593	+3.2%	-0.5%
30 +	13,957	13,949	14,361	+3.0%	+2.9%

Beef sired female cattle for beef production

Age (months)	2021	2022	2023	2022/2023	2021/2023
0-6	113,353	112,774	112,658	-0.1%	-0.6%
6-12	61,875	65,477	67,915	+3.7%	+9.8%
12-18	116,930	115,594	114,221	-1.2%	-2.3%
18-24	52,865	52,915	55,826	+5.5%	+5.6%
24-30	72,655	71,629	67,315	-6.0%	-7.3%
30 +	268,790	267,299	259,394	-3.0%	-3.5%

Total cattle for beef production



Dairy sired male cattle for beef production

Age (months)	2021	2022	2023	2022/2023	2021/2023
0-6	19,492	15,421	13,455	-12.7%	-31.0%
6-12	25,707	20,621	16,425	-20.3%	-36.1%
12-18	14,544	14,211	11,241	-20.9%	-22.7%
18-24	13,665	14,339	11,827	-17.5%	-13.5%
24-30	5,415	5,587	5,770	+3.3%	+6.6%
30+	2,274	2,277	2,571	+12.9%	+13.1%

LMC does not guarantee the accuracy or completeness of any third party information provided in or included with this publication.

LMC hereby disclaims any responsibility for error, omission or inaccuracy in the information, misinterpretation or any other loss, disappointment, negligence or damage caused by reliance on third party information.