

**Title: Cattle for beef production on NI farms June 2023**

Source: Livestock and Meat Commission/APHIS data  
 Date: 03 July 2023  
 Contact: bulletin@lmcni.com  
 Website: www.lmcni.com

Market Information Department



**Total cattle for beef production**

Age (months)	2021	2022	2023	2022/2023	2021/2023
0-6	250,316	241,406	239,136	-0.9%	-4.5%
6-12	148,818	154,120	154,785	+0.4%	+4.0%
12-18	244,006	241,293	234,191	-2.9%	-4.0%
18-24	110,892	108,587	114,051	+5.0%	+2.8%
24-30	119,291	118,497	116,638	-1.6%	-2.2%
30 +	286,303	285,927	279,206	-2.4%	-2.5%

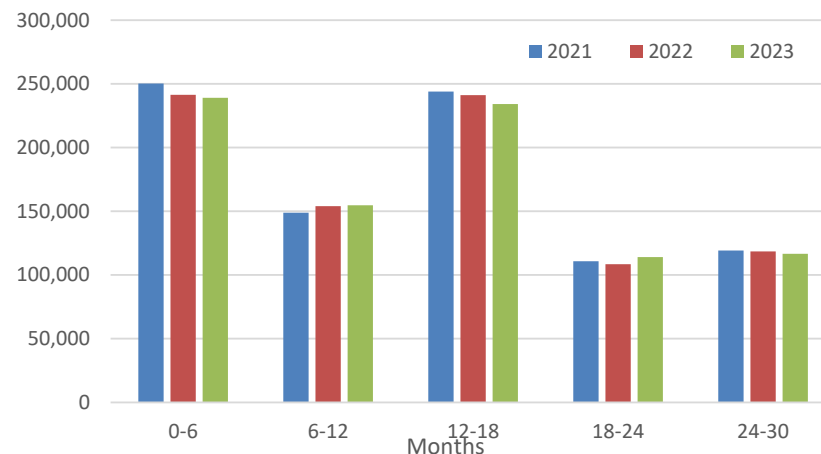
**Beef sired male cattle for beef production**

Age (months)	2021	2022	2023	2022/2023	2021/2023
0-6	115,655	113,620	114,472	+0.7%	-1.0%
6-12	64,034	67,939	70,171	+3.3%	+9.6%
12-18	111,736	110,562	109,087	-1.3%	-2.4%
18-24	45,058	43,521	46,868	+7.7%	+4.0%
24-30	42,507	41,456	43,404	+4.7%	+2.1%
30 +	13,888	13,972	14,574	+4.3%	+4.9%

**Beef sired female cattle for beef production**

Age (months)	2021	2022	2023	2022/2023	2021/2023
0-6	111,752	110,453	110,305	-0.1%	-1.3%
6-12	62,198	66,773	68,953	+3.3%	+10.9%
12-18	116,044	114,449	112,648	-1.6%	-2.9%
18-24	53,428	52,293	55,973	+7.0%	+4.8%
24-30	70,966	71,067	67,073	-5.6%	-5.5%
30 +	270,302	269,769	262,145	-2.8%	-3.0%

**Total cattle for beef production**



**Dairy sired male cattle for beef production**

Age (months)	2021	2022	2023	2022/2023	2021/2023
0-6	22,909	17,333	14,359	-17.2%	-37.3%
6-12	22,586	19,408	15,661	-19.3%	-30.7%
12-18	16,226	16,282	12,456	-23.5%	-23.2%
18-24	12,406	12,773	11,210	-12.2%	-9.6%
24-30	5,818	5,974	6,161	+3.1%	+5.9%
30+	2,113	2,186	2,487	+13.8%	+17.7%

LMC does not guarantee the accuracy or completeness of any third party information provided in or included with this publication.

LMC hereby disclaims any responsibility for error, omission or inaccuracy in the information, misinterpretation or any other loss, disappointment, negligence or damage caused by reliance on third party information.