

**Title: Cattle for beef production on NI farms May 2023**

Source: Livestock and Meat Commission/APHIS data  
 Date: 05 June 2023  
 Contact: bulletin@lmcni.com  
 Website: www.lmcni.com

Market Information Department



**Total cattle for beef production**

Age (months)	2021	2022	2023	2022/2023	2021/2023
0-6	231,282	227,234	221,353	-2.6%	-4.3%
6-12	162,548	165,632	166,227	+0.4%	+2.3%
12-18	230,883	230,802	224,960	-2.5%	-2.6%
18-24	119,618	118,306	121,269	+2.5%	+1.4%
24-30	115,370	114,177	111,925	-2.0%	-3.0%
30 +	287,839	288,954	281,531	-2.6%	-2.2%

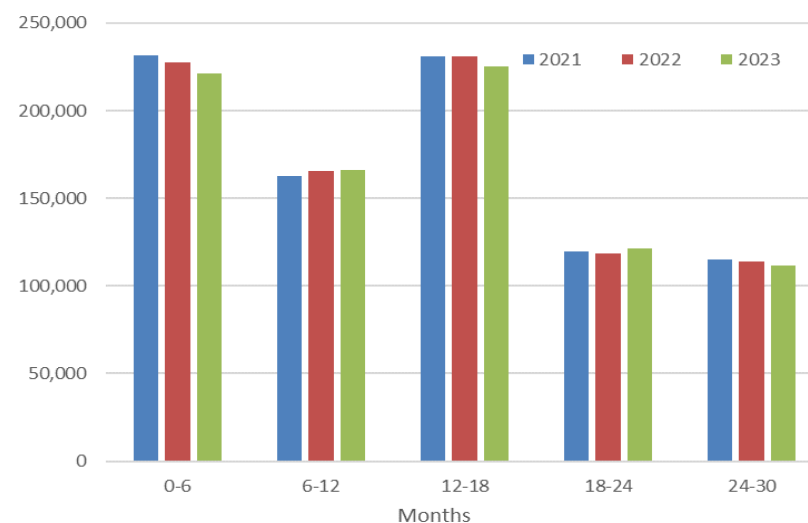
**Beef sired male cattle for beef production**

Age (months)	2021	2022	2023	2022/2023	2021/2023
0-6	104,978	105,582	105,035	-0.5%	+0.1%
6-12	71,906	74,518	76,690	+2.9%	+6.7%
12-18	105,181	105,252	104,455	-0.8%	-0.7%
18-24	49,651	48,476	50,470	+4.1%	+1.6%
24-30	40,712	39,724	41,199	+3.7%	+1.2%
30 +	14,180	14,258	14,809	+3.9%	+4.4%

**Beef sired female cattle for beef production**

Age (months)	2021	2022	2023	2022/2023	2021/2023
0-6	101,438	102,781	101,089	-1.6%	-0.3%
6-12	69,688	72,898	74,871	+2.7%	+7.4%
12-18	107,955	107,429	106,675	-0.7%	-1.2%
18-24	58,451	57,844	60,219	+4.1%	+3.0%
24-30	68,217	67,895	63,864	-5.9%	-6.4%
30 +	271,697	272,652	264,399	-3.0%	-2.7%

**Total cattle for beef production**



**Dairy sired male cattle for beef production**

Age (months)	2021	2022	2023	2022/2023	2021/2023
0-6	24,866	18,871	15,229	-19.3%	-38.8%
6-12	20,954	18,216	14,666	-19.5%	-30.0%
12-18	17,747	18,121	13,830	-23.7%	-22.1%
18-24	11,516	11,986	10,580	-11.7%	-8.1%
24-30	6,441	6,558	6,862	+4.6%	+6.5%
30+	1,962	2,044	2,323	+13.6%	+18.4%

LMC does not guarantee the accuracy or completeness of any third party information provided in or included with this publication.

LMC hereby disclaims any responsibility for error, omission or inaccuracy in the information, misinterpretation or any other loss, disappointment, negligence or damage caused by reliance on third party information.